

MARTA MT-KP1532B Countertop Blender



MARTA MT-KP1532B Countertop Blender User Manual

[Home](#) » [MARTA](#) » MARTA MT-KP1532B Countertop Blender User Manual 

Contents

- [1 MARTA MT-KP1532B Countertop Blender](#)
- [2 Product Information](#)
- [3 Product Usage Instructions](#)
- [4 CLEANING AND MAINTENANCE](#)
- [5 SPECIFICATION](#)
- [6 Documents / Resources](#)
 - [6.1 References](#)
- [7 Related Posts](#)

marta

MARTA MT-KP1532B Countertop Blender



Product Information

Specifications

- **Power supply:** 230 V ~ 50 Hz

Product Usage Instructions

Before the First Use

Before using the device for the first time, it is important to follow these steps

1. Check that all parts listed in the user manual are included in the package.
2. Refer to the user manual for any specific assembly instructions.
3. Ensure the power supply matches the specifications (230 V ~ 50 Hz).

Using the Device

Follow these steps to use the countertop blender

1. Assemble the blender components according to the instructions provided.
2. Add ingredients to the glass jar as needed.
3. Secure the lid and ensure it is properly sealed.
4. Adjust the speed control knob to the desired setting.
5. Turn on the blender and blend until desired consistency is achieved.

Cleaning and Maintenance

To ensure the longevity of your countertop blender, follow these cleaning and maintenance tips

1. After each use, disassemble the blender components for thorough cleaning.
2. Hand wash all removable parts with warm soapy water.
3. Use a damp cloth to wipe down the main unit, ensuring it is dry before storage.

Storage

When not in use, store the countertop blender in a clean and dry place. Ensure all parts are completely dry before storage to prevent mold or mildew growth.

FAQ

Q: Where can I find information about service centers?

A: Current information about service centers is available on the website <https://multimarta.com/>

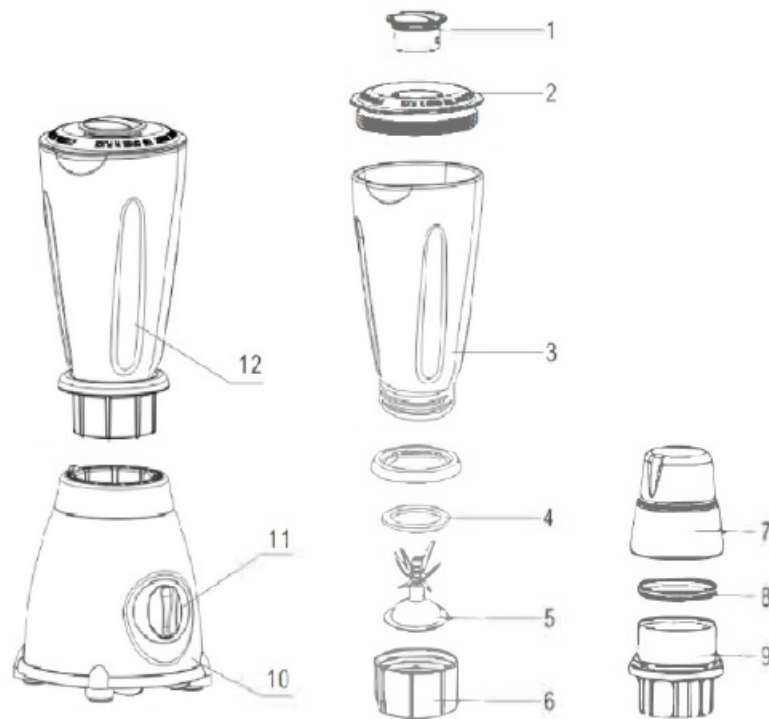
Q: Where is the product manufactured?

A: The product is made in China by Cosmos Far View International Limited. The address is Room 701, 16 apt, Lane 165, Rainbow North Street, Ningbo, China.

User manual

Description

1. Inner lid
2. Lid
3. Glass jar
4. Sealing ring
5. Blade unit
6. Jug base
7. Mill jar
8. Sealing ring
9. Mill blade unit
10. Main unit
11. Speed control knob
12. Assembled jar



Cosmos Far View International Limited
Room 701, 16 apt, Lane 165, Rainbow North Street, Ningbo, China



USER MANUAL

CAUTION

- Read this manual carefully before using the appliance and save it for future reference.
- Before the first use, check the device specifications and the power supply in your network.
- It is not intended for industrial use.
- For indoor use only. Use only for domestic purposes according to the instruction manual.
- Keep the power cord away from sharp edges and hot surfaces.
- Do not pull the cord. Always take the socket. Do not reel the cord around the device housing.
- Never attempt to frame and repair the appliance by yourself. If you meet problems, please contact the nearest customer service center.
- Using accessories or replacement parts that are not recommended or sold by the manufacturer may cause damage to the appliance.
- Always unplug the appliance and let it cool down before cleaning and removing parts. Keep unplugged when not in use.
- To avoid electric shock and fire, do not immerse in water or other liquids. If this occurs, immediately unplug it and contact service center for inspection.
- This appliance is not intended for use by persons (including children) with reduced physical, sensory or mental capabilities, or lack of experience and knowledge, unless they have been given supervision or instruction

concerning use of the appliance by a person responsible for their safety.

- Be cautious when using blade.
- Every time after use, make sure the appliance is turned off, the blades stopped completely. Only then open the lid.
- Do not overload the appliance. The appliance is designed for processing relatively small quantities of food and maximum quantities given in the table should not be exceeded.
- Never blend hot liquids!
- Maximum time of continuous operation – no more than 1 minute with an interval for at least 5 minutes.
- Do not use the device if the cord is damaged. Do not use the device if the cup is empty. Do not leave the device unattended.
- Always disconnect the device from power supply if you do not use it and before cleaning.

BEFORE THE FIRST USE

- Please unpack your appliance and remove all packing materials
- Clean the motor unit with damp cloth, wash blades and jar with soapy water, rinse and dry.
- Do not immerse motor unit into water.

USING THE DEVICE

The blender is suitable for making liquid and puree-like products: sauces, juices, soups, cocktails, smoothies, kneading dough for pancakes, making puree.

- Place the appliance on a flat, stable surface.
- Install the jug base (6) and the blade unit (5) on the motor block, place the sealing ring (4), and then install the glass jar (3) by turning it clockwise until it stops.
- Load the products into the glass jar. Large ingredients should be cut into 2-3 cm pieces. Top up the liquid.
ATTENTION: the blender is not designed for chopping ice and grinding hot food and liquids with temperatures above 60C°! This may cause damage to the device.
- Cover the bowl tightly with the lid (2), and close it by turning the inner lid (1) clockwise.
- To use the dry food chopper, turn it upside down with the mill jar (7), remove the mill blade unit (9). Pour the ingredients into the container and attach the blade unit of the chopper by turning it clockwise until it stops. Install the chopper on the blender main unit (10).
- Connect the device to the power supply.
- For operation, select the speed from 1 to 5 using the speed control knob (8) or pulse mode P. To turn off, set the speed control knob (8) to position 0.
- Start grinding at a low speed, and then switch to a higher speed. Briefly use pulse mode P if necessary.
- No more than 0.8 liters of hot liquids or foam-forming ingredients can be placed in the blender glass jar. Never load the blender glass jar above the maximum mark!
- If the products are stuck in the blender glass jar and the blade unit does not scroll well, it is necessary to turn off the blender, mix the contents of the bowl with a silicone spatula and, if necessary, add more liquid. When grinding products of viscous consistency, it is recommended to periodically mix the contents with a silicone spatula.

ATTENTION: never try to mix with a spatula or adjust the contents of the blender with your hands when the blades are rotating!

- Wait for the blades to stop completely before opening the lid. Before removing the bowl from the base, disconnect the appliance from the power supply.

ATTENTION: When processing most products, it is recommended to first turn on the device several times for short periods of time in order not to overload the device motor. As the product is crushed, the duration of continuous operation can be increased until the required level of grinding is reached (the continuous operation time should not exceed 1 minute). In pulse mode, the device can operate for no more than 20 seconds.

ATTENTION! THIS DEVICE IS EQUIPPED WITH OVERHEAT PROTECTION. IF THE CUTTING BLADES ARE BLOCKED, DISCONNECT THE BLENDER FROM THE POWER SUPPLY AND LET IT COOL DOWN. DO NOT TRY TO ELIMINATE THE CAUSE OF THE BLOCKAGE WHILE THE BLENDER IS CONNECTED TO THE POWER SUPPLY!

CLEANING AND MAINTENANCE

- Unplug the appliance from the power supply.
- Wipe the motor outside with a damp cloth.
- Wash jar, blades and lid right after use with warm soapy water and wipe it with dry cloth.
- Do not use aggressive and abrasive agents for cleaning

CAUTION: The blades are sharp and therefore dangerous. Handle with caution.

STORAGE

Before storing, dry thoroughly the container, container lid, cutting blade. Store the appliance in a cool, dry place.

SPECIFICATION

Power supply

230 V ~ 50 Hz

WARRANTY DOES NOT COVER SUPPLIES (filters, ceramic and non-stick coating, rubber seals, etc.)


Production date is available in the serial number located on the identification sticker on the gift box and/or on sticker on the device. The serial number consists of 13 characters, the 4th and 5th characters indicate the month, the 6th and 7th indicate the year of device production.

Producer may change the complete set, appearance, country of manufacture, warranty and technical characteristics of the model without notice. Please check when purchasing device.

Current information about service centers is available on the website <https://multimarta.com/>

Producer: Cosmos Far View International Limited. Room 701, 16 apt, Lane 165, Rainbow North Street, Ningbo, China Made in China

Documents / Resources

	<p>MARTA MT-KP1532B Countertop Blender [pdf] User Manual MT-KP1532B Countertop Blender, Countertop Blender, Blender</p>
---	---

References

-  [Multimarta - интернет-магазин бытовой техники MARTA](#)
- [User Manual](#)

[Manuals+](#), [Privacy Policy](#)

This website is an independent publication and is neither affiliated with nor endorsed by any of the trademark owners. The "Bluetooth®" word mark and logos are registered trademarks owned by Bluetooth SIG, Inc. The "Wi-Fi®" word mark and logos are registered trademarks owned by the Wi-Fi Alliance. Any use of these marks on this website does not imply any affiliation with or endorsement.