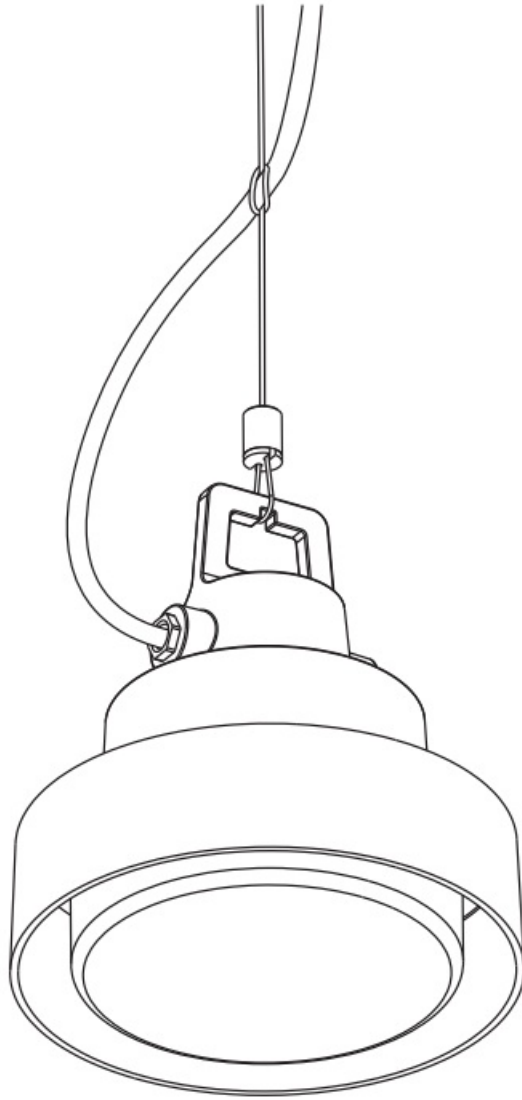




marset S16 IP65 Ceiling Lamp Instruction Manual

[Home](#) » [marset](#) » marset S16 IP65 Ceiling Lamp Instruction Manual 

marset S16 IP65 Ceiling Lamp



Contents

- [1 WARNING!](#)
- [2 Assembly Instructions](#)
- [3 CANOPY ACCESSORY](#)
- [4 GARLAND ACCESSORY](#)
- [5 Technical Data](#)
- [6 Customer Support](#)
- [7 Documents / Resources](#)
 - [7.1 References](#)
- [8 Related Posts](#)

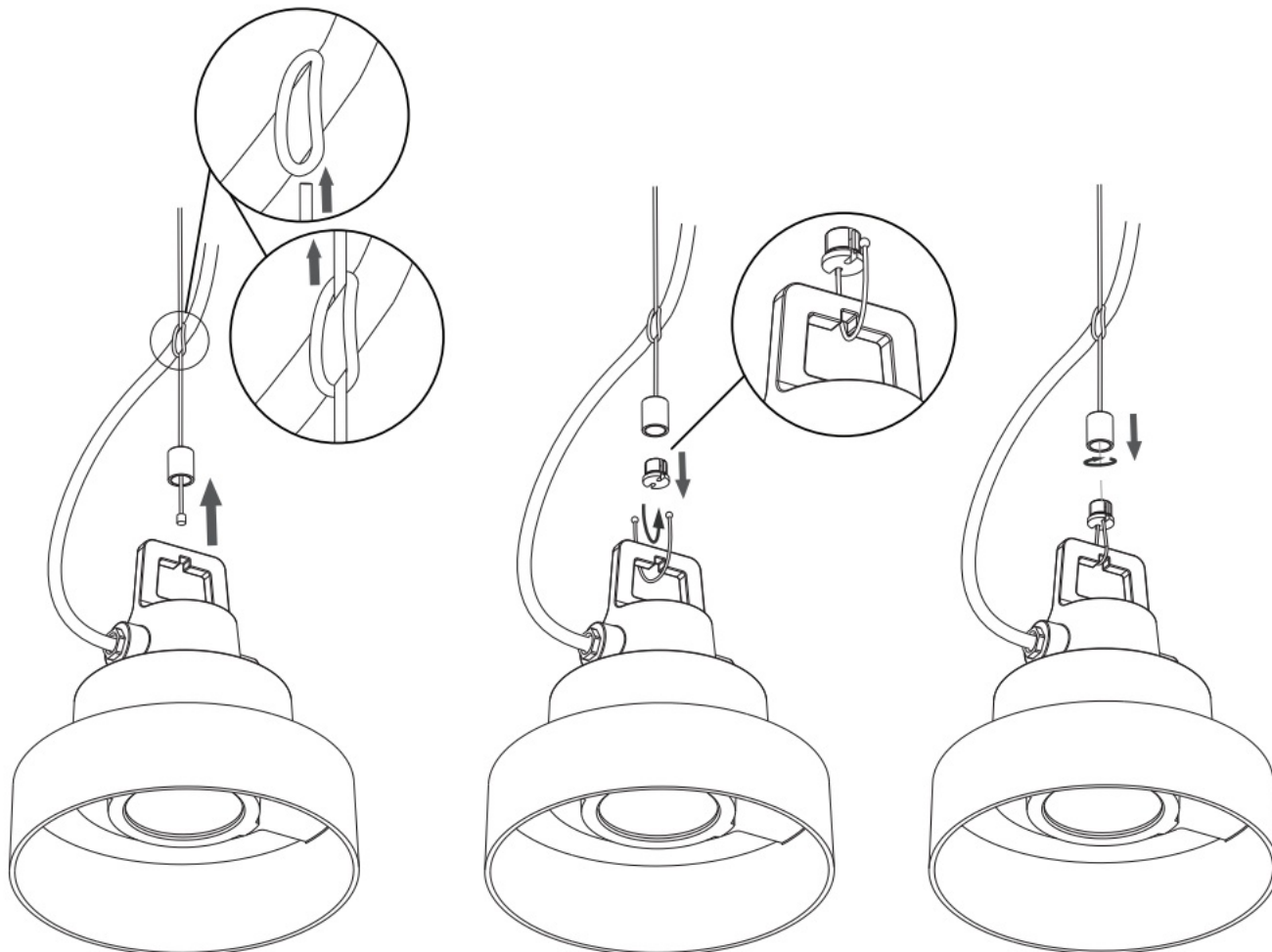
WARNING!

1. It is recommended that a professional electrician be responsible for installing the light.
2. Disconnect power supply before installation.
3. If the wire or flexible cord is damaged, it must only be changed by the manufacturer, their Service Dept. or qualified personnel in order to avoid risk.
4. The light source contained in this luminaire shall only be replaced by the manufacturer or his service agent or a similar qualified person.

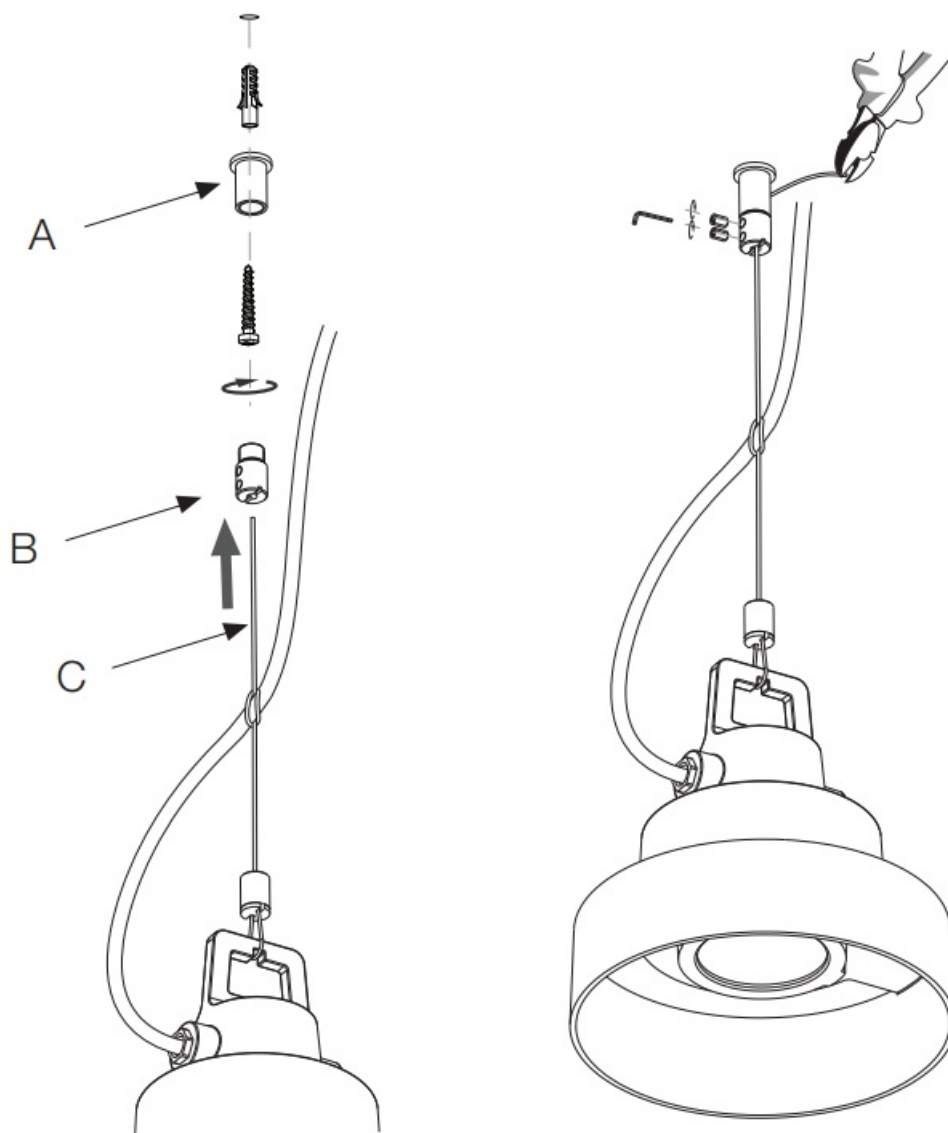
5. To clean the luminaire use a soft damp cloth with soap or neutral detergent. Do not use alcohol or other solvents.
6. The light source and control gear contained in this luminaire shall only be replaced by a qualified person.

Assembly Instructions

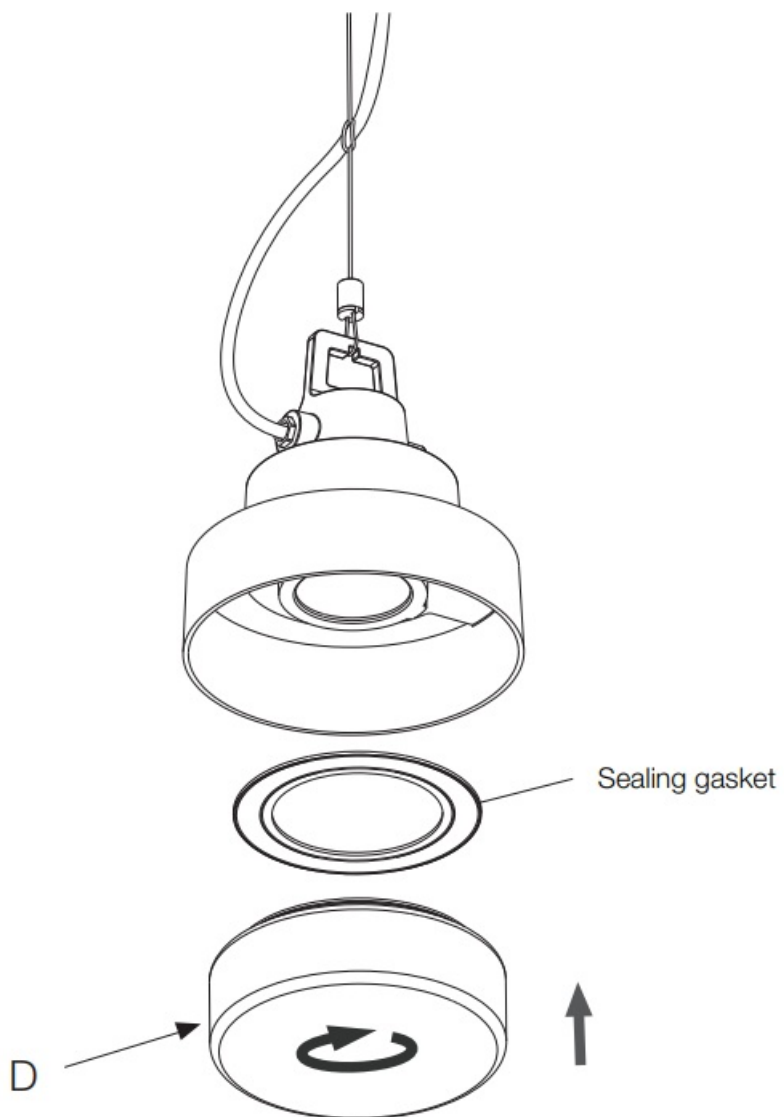
1. Follow the steps to hang the luminaire.



2. Fix support (A) to the ceiling, using the screw and plug provided. Pass the steel wire (C) through the cable glider (B) and the support (A). Then, tighten the grommet.



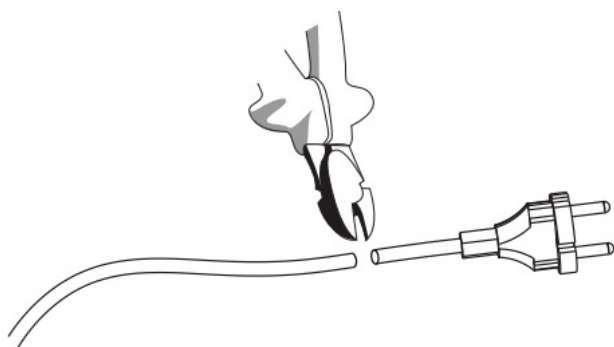
3. Install the glass cover (D) by turning it until it is tight.



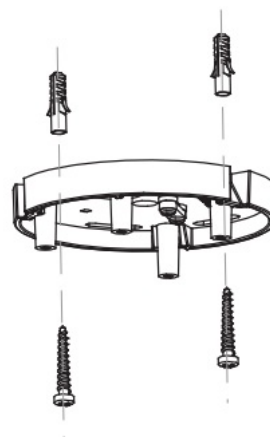
CANOPY ACCESSORY

- Make the electrical connections at the connectors, as shown in Fig.

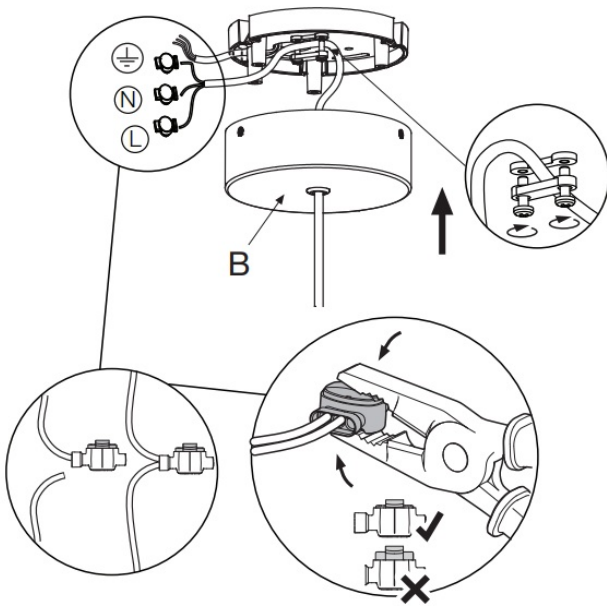
1.



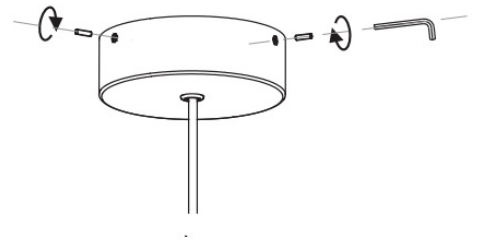
2.



3.



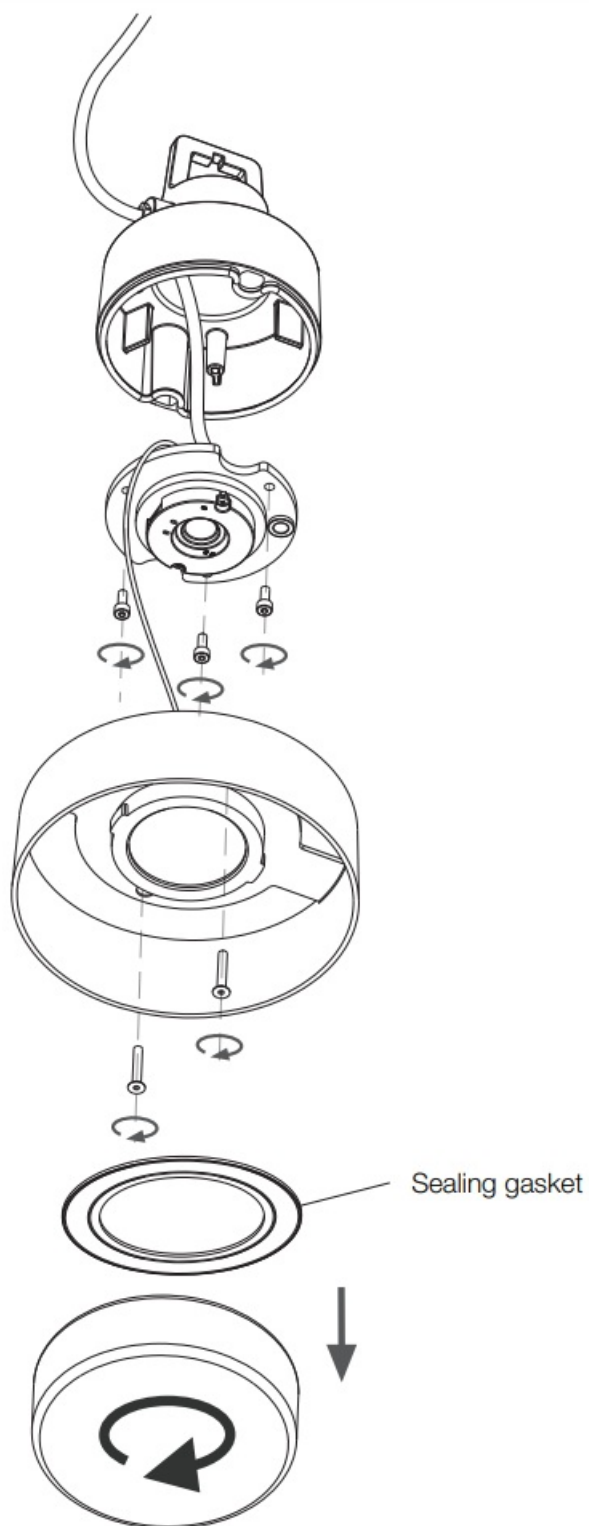
4.



GARLAND ACCESSORY

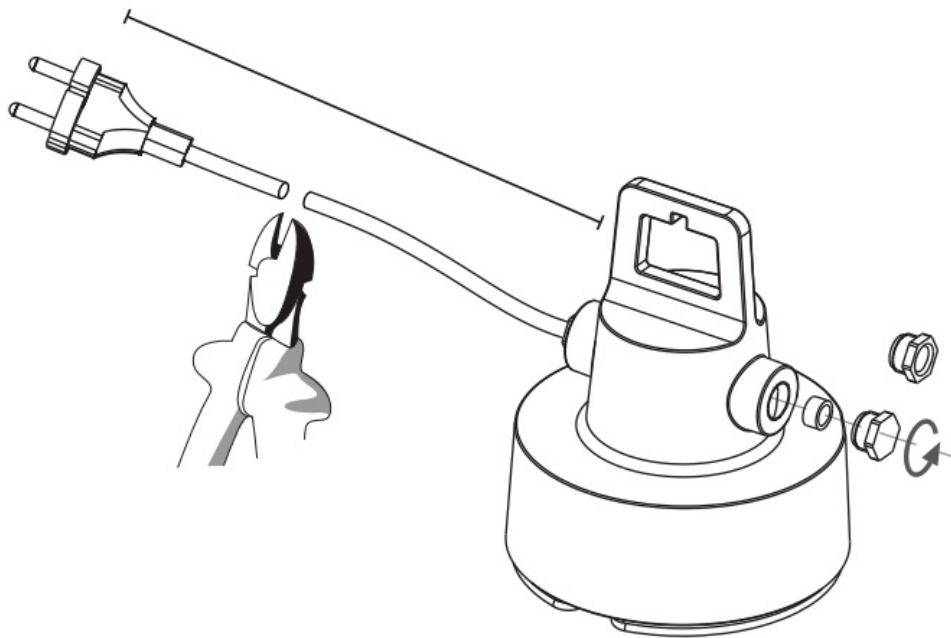
- Unscrew all the indicated screws.

1.

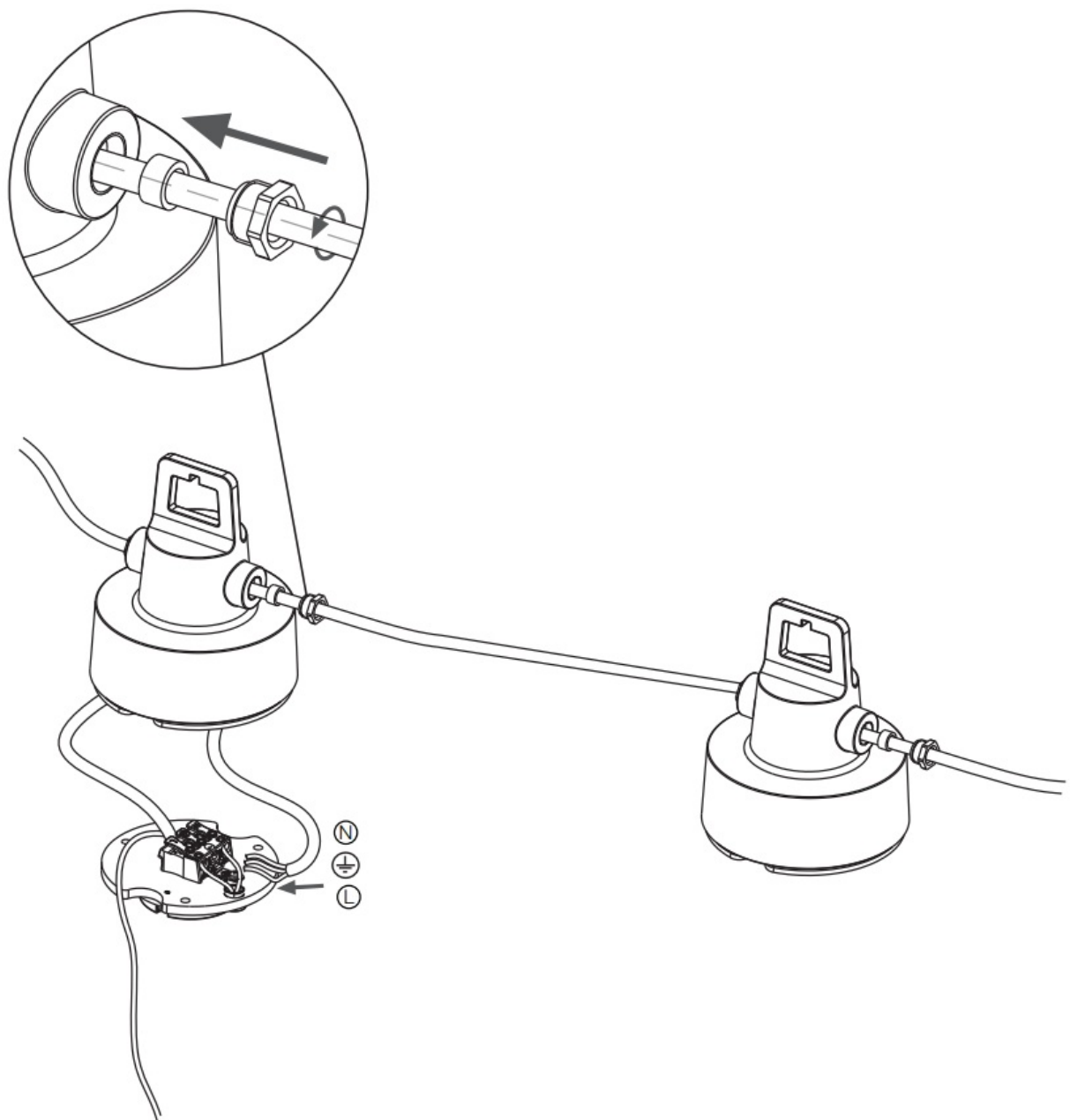


- Cut to desired size.

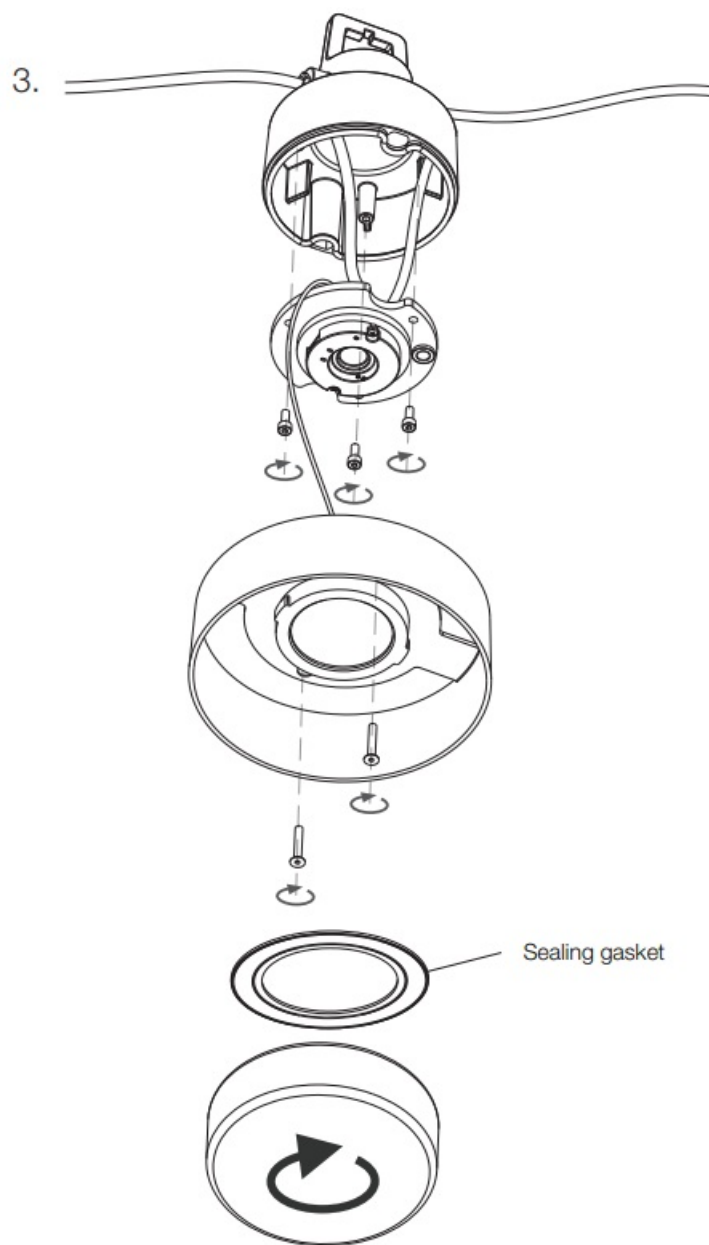
2.




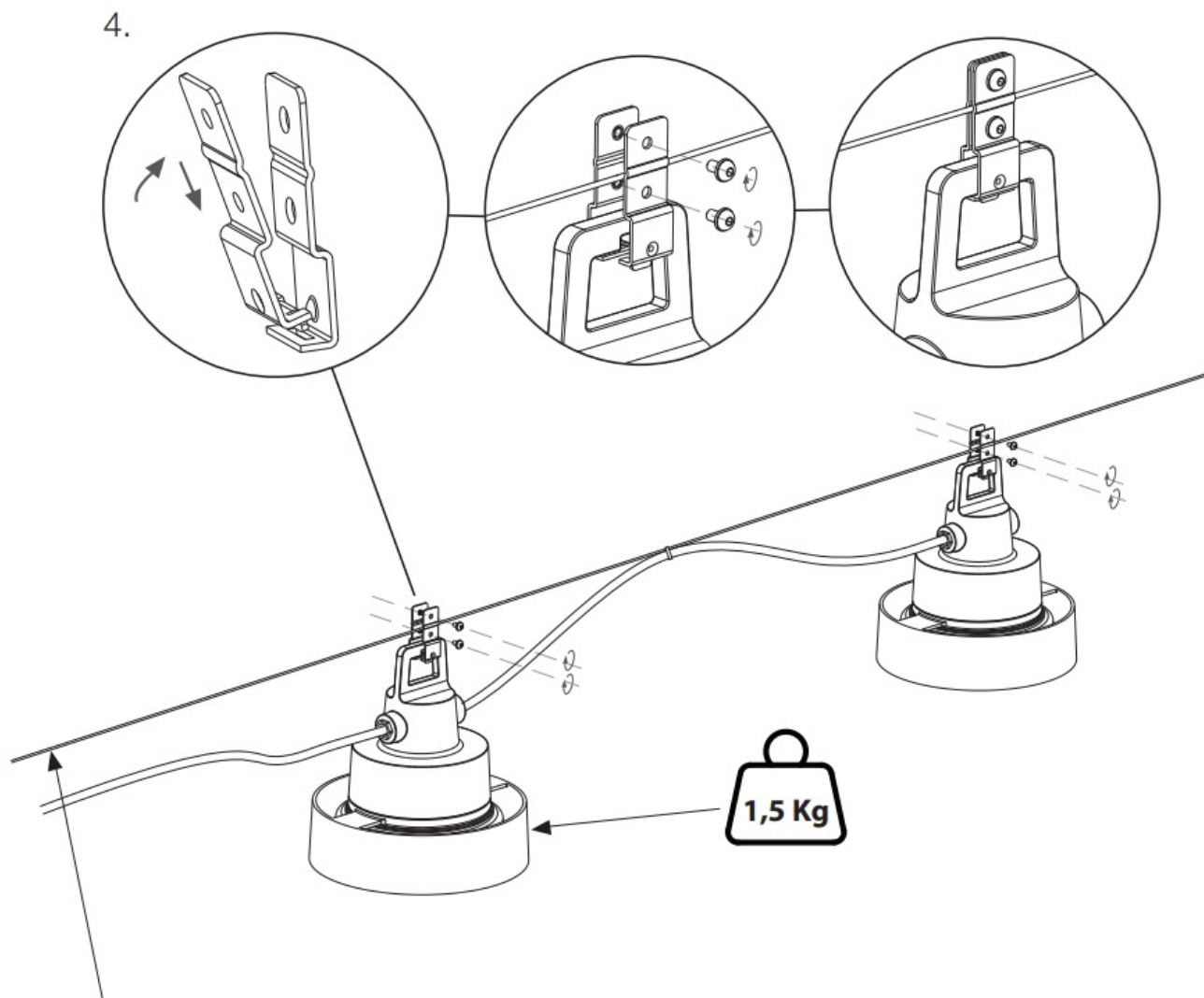
- Make the electrical connections on the strip as shown in the figure.



- Rethread all the indicated screws.



 Use Ø2mm stainless steel cable (not included). Keep in mind the weight of each lamp when choosing the suspension system.



Technical Data

Light fitting for outdoor use

Power Factor: 0,98

Bulb to be used:

LED COB 8W 230V (included)



■ This symbol on the product or its packaging indicates that it must not be treated as household waste. It should, in fact, be handed in at a recognised collection point for recycling electrical and electronic equipment. For more detailed information about the recycling of this product, please contact your local city office, your household waste disposal service or the shop where you purchased the product.

Dimmable

Phase cut dimmer leading and trailing edge (Triac).



Caution, risk of electric shock.

This product contains a light source of energy efficiency class G




Customer Support

MARSET ILUMINACIÓN SA · CTRA. DE RUBÍ 284 · 08228 TERRASSA (BARCELONA) · SPAIN ·
WWW.MARSET.COM REV. 01

marset **CE**

Documents / Resources

	marset S16 IP65 Ceiling Lamp [pdf] Instruction Manual S16 IP65 Ceiling Lamp, S16 IP65, Ceiling Lamp, Lamp
---	--

References

- [marset Marset Lighting USA - Taking Care of Light USA](#)

[Manuals+.](#)