



MARS GAMING

User Guide

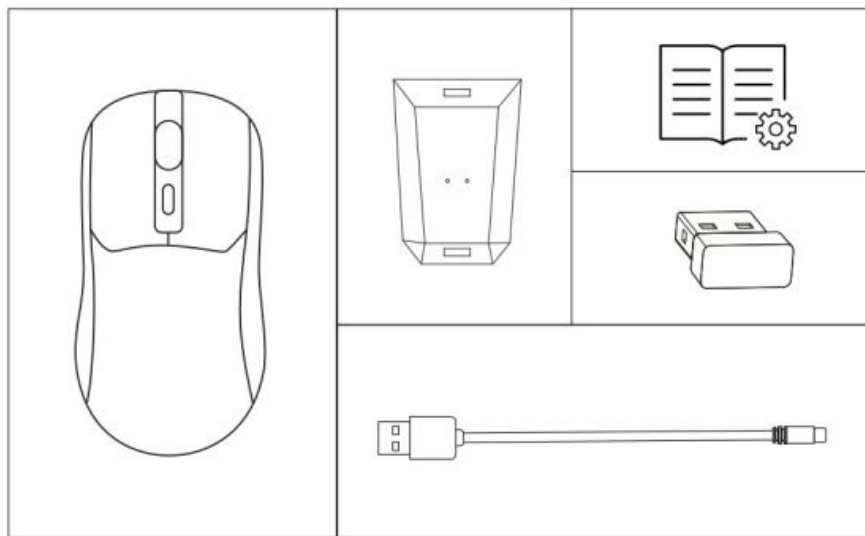
MM-T3

TRI-MODE MOUSE

Contents [[hide](#)]

- [1 CONTENT](#)
- [2 SPECIFICATIONS](#)
- [3 PRODUCT OVERVIEW](#)
- [4 SECURITY REMINDERS](#)
- [5 BATTERY](#)
- [6 CONNECTION MODES](#)
- [7 SOFTWARE](#)
- [8 TROUBLESHOOTING](#)
- [9 Documents / Resources](#)
 - [9.1 References](#)

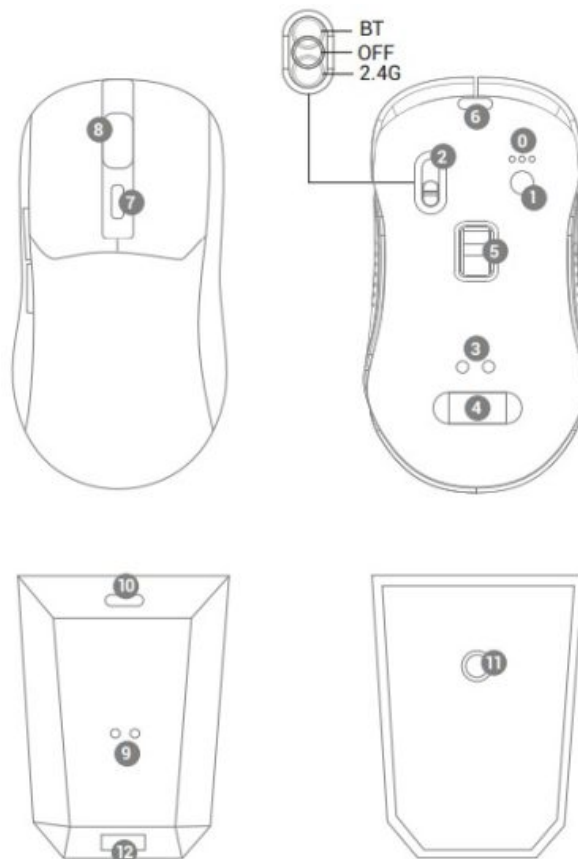
CONTENT



SPECIFICATIONS

- 5V / 0.2A
- Bluetooth 5.0
- 3.7V Li-Po 500mAh
- Pix Art PAW3104PRO 800/1600/2400/3600/7200DPI (Software 14400DPI)
- 118x64x40mm / 63g

PRODUCT OVERVIEW



0. Mode LED indicator 1. Pairing button 2. Mode selection 3. Mouse charging contacts 4. 2.4G USB receiver 5. Optical sensor 6. USB-C charging port	7. DPI button 8. Charging LED indicator 9. Stand charging contacts 10. Stand USB-C port 11. Lighting selection button 12. USB HUB
--	--

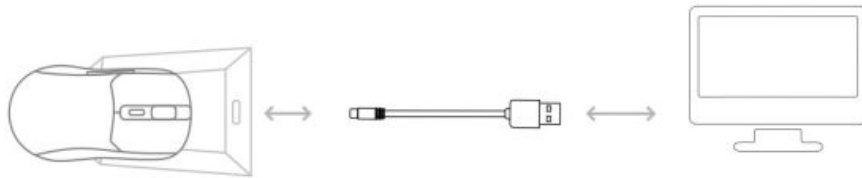
SECURITY REMINDERS

- Do not expose to direct sunlight.
- Disconnect the charging cable when not in use.
- Do not use the product in areas with high humidity or near water.
- Before cleaning, unplug the charging cable and power OFF the mouse.
- Use a soft, dry cloth to clean the device. Do not use abrasive cleaners or solvents.
- Please insert gently and do not bend the USB cable and USB ports otherwise they might get damaged and malfunction.
- Do not use the mouse if there is visible damage or if it malfunctions.
- Do not attempt to open, disassemble, or repair the device or cable yourself. This may result in risk of electric shock or damage to the mouse.
- **Important Notice:** If you notice any damage or irregularities in the product, please do not proceed with the installation and contact our customer service immediately. Failure to follow these instructions may result in injury or further damage.

BATTERY

- Connect the USB cable to the PC and the other end to the charging stand and fully charge the battery before using the mouse for the first time. Only use the included USB-A to USB-C cable to charge the device, connect it to a computer USB port a 0.5A or 2.5W to achieve the maximum charging speed.
- The mouse charging LED indicator will light in red color when battery is being charged and will turn to green when battery has finished charging. Charging time might take up to 2 hours.
- Use time up to 100 hours with RGB OFF and 40 hours with RGB ON. Use time might

vary depending on the device, connection mode and RGB lighting of the product.



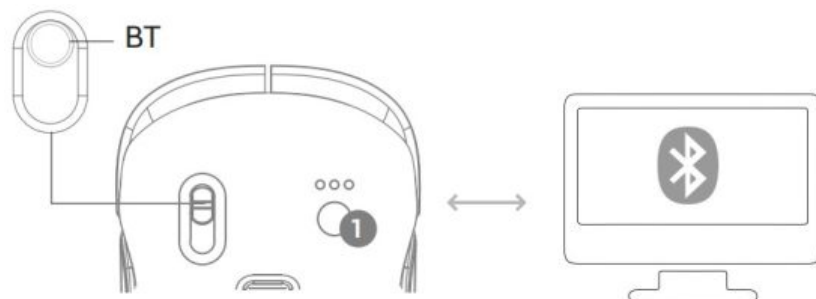
CONNECTION MODES

BLUETOOTH

1. Enable Bluetooth connection on your computer or device.
2. Slide the switch located at the bottom of the mouse to the BT position. The mode LED indicator will start blinking in green or blue depending on which of the two Bluetooth channels is selected. You can change the Bluetooth channel by pressing the pairing button (Button 1).

If connection has not been successful or you want to disconnect the mouse from the previous paired Bluetooth device, press the pairing button (Button 1) for 5 seconds and the mode LED indicator will start blinking indicating that the mouse has entered pairing mode.

3. Open the Bluetooth device list and search MMT3 then connect it. The light of the mode LED indicator will turn OFF when the mouse has been paired correctly.



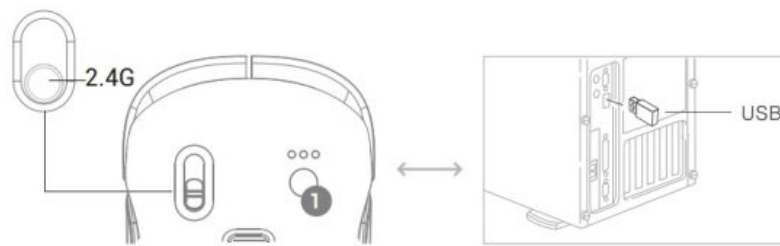
2.4GPRO

1. Take the USB dongle located in the bottom part of the mouse and connect it to the computer USB.
2. Slide the switch located at the bottom of the mouse to the 2.4G position.
3. The mode LED indicator will light up in red color for 2 seconds and will turn OFF indicating that the mouse has been successfully connected.

If connection has not been successful press the pairing button (Button 1) for 5

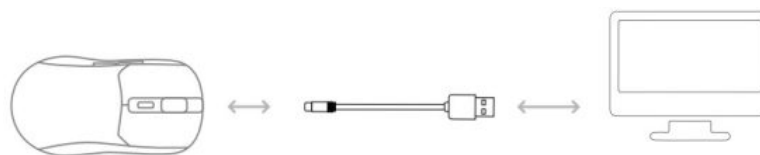
seconds, the mode LED indicator will start blinking.

Reconnect the USB dongle in a different USB port.



CABLE

1. Plug the USB-C cable to the mouse.
2. Connect the other end of the cable to the USB port of the computer, the mouse mode LED indicator will turn to red.



SOFTWARE

The mouse includes a control software to fully customize the mouse lighting, buttons and performance. The software is only compatible with Windows systems.

1. Download the mouse software on www.marsgaming.eu and install it.
2. Connect the mouse to the computer through Cable or 2.4GPRO modes, the software can not be customized while it is connected through Bluetooth mode.
3. Make changes in the software and apply them. The changes will be stored in the mouse memory.

TROUBLESHOOTING

- Unsuccessful Bluetooth connection: 1. Make sure the mouse mode is in Bluetooth position and it is not already connected to another device 2. Check if the Bluetooth connection of the device is enabled 3. If problem persists, press the pairing mode button for 5 seconds then restart the Bluetooth device 4. Go to Bluetooth list and delete the paired devices 5. Try pairing it again.

- Unsuccessful 2.4G connection: 1. Make sure the USB wireless receiver is connected to the device and the mouse mode is in 2.4G mode connection 2. Connect the USB wireless receiver to a different USB port of the device 3. If problem persists, press the pairing button for 5 seconds and restart device.
- Mouse will not power ON/OFF: 1. Fully charge the mouse making sure the mouse is held correctly on the charging stand 2. Move the bottom switch to 2.4G or Bluetooth position to power ON 3. Check if the charging contacts of the mouse and charging stand are clean 4. If problem persist, try connecting the USB charging cable directly to the USB-C port of the mouse.
- Disconnections: 1. Fully charge the mouse 2. Check if the device is too far from the mouse or if there are many obstacles between device and mouse. There might be occasional disconnections or interferences if there are many electromagnetic signals in the environment or if the wireless range has been exceeded.
- Mouse pointer erratic movement: Ensure the surface under the mouse is clean. Use a mousepad to avoid reflective or uneven surfaces. Check if there is dirt in the optical sensor.
- Mouse pointer too fast or slow: Increase or decrease the pointer speed by pressing the DPI button. Adjust the mouse pointer speed on the control software or on your operating system settings.

WARRANTY

The original purchase receipt will be required to use the warranty service. Keep it in a safe place. Manipulations of the device, technical modifications of any kind, and damages due to external mechanical forces will void your warranty. To read the terms and conditions of the warranty visit es.marsgaming.eu/es/terms

COMPLIANCE

You can consult the European Union Declaration of Conformity of the product at www.marsgaming.eu/en/conformity For more information www.marsgaming.eu

DISPOSAL AND RECYCLING

At the end of the product's life, it should not be disposed of with regular household waste. To promote environmental sustainability and ensure proper waste management, please take the product to a designated waste collection and recycling center.

CONTACT

If you have questions or need assistance with the product, do not hesitate to contact us:

attcliente@biomag.es / +34945124598

MARSGAMING

Biomag S. L.

EU office:

Address: Barratxi 39, Pab. 3

01013, Vitoria, SPAIN


Telephone: +34945124598

Email: attcliente@biomag.es



WWW.MARSGAMING.EU

Documents / Resources

	<p>MARS GAMING MMT3 Wireless Mouse [pdf] User Manual</p> <p>MMT3, MMT3 Wireless Mouse, MMT3, Wireless Mouse</p>
---	---

References

- [User Manual](#)

■ MARS
GAMING

◆ MARS GAMING, MMT3, MMT3 Wireless Mouse, Wireless
Mouse

Leave a comment

Your email address will not be published. Required fields are marked *

Comment *

Name

Email

Website

☐ Save my name, email, and website in this browser for the next time I comment.

Post Comment

Search:

e.g. whirlpool wrf535swhz

Search

[Manuals+](#) | [Upload](#) | [Deep Search](#) | [Privacy Policy](#) | [@manuals.plus](#) | [YouTube](#)

This website is an independent publication and is neither affiliated with nor endorsed by any of the trademark owners. The "Bluetooth®" word mark and logos are registered trademarks owned by Bluetooth SIG, Inc. The "Wi-Fi®" word mark and logos are registered trademarks owned by the Wi-Fi Alliance. Any use of these marks on this website does not imply any affiliation with or endorsement.