



[Home](#) » [MARS GAMING](#) » **MARS GAMING ML-VISIONPRO240W Processor All in One Liquid Cooler User Manual** 

Contents [[hide](#)]




- [1 MARS GAMING ML-VISIONPRO240W Processor All-in-One Liquid Cooler](#)
- [2 Specifications](#)
- [3 WHAT'S IN THE BOX](#)
- [4 Intel/AMD](#)
- [5 Intel](#)
- [6 Installation options](#)
- [7 Control Software](#)
- [8 Troubleshooting](#)
- [9 Warranty](#)
- [10 AMD](#)
- [11 PUMP CONNECTION](#)
- [12 CONNECTION](#)
- [13 Documents / Resources](#)
 - [13.1 References](#)

MARS GAMING

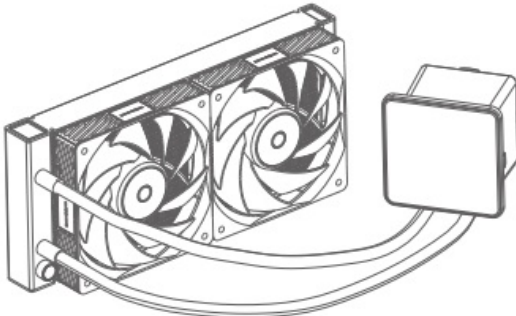

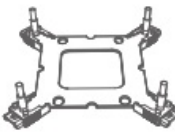
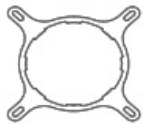
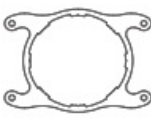






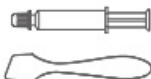



MARS GAMING ML-VISIONPRO240W Processor All-in-One Liquid Cooler



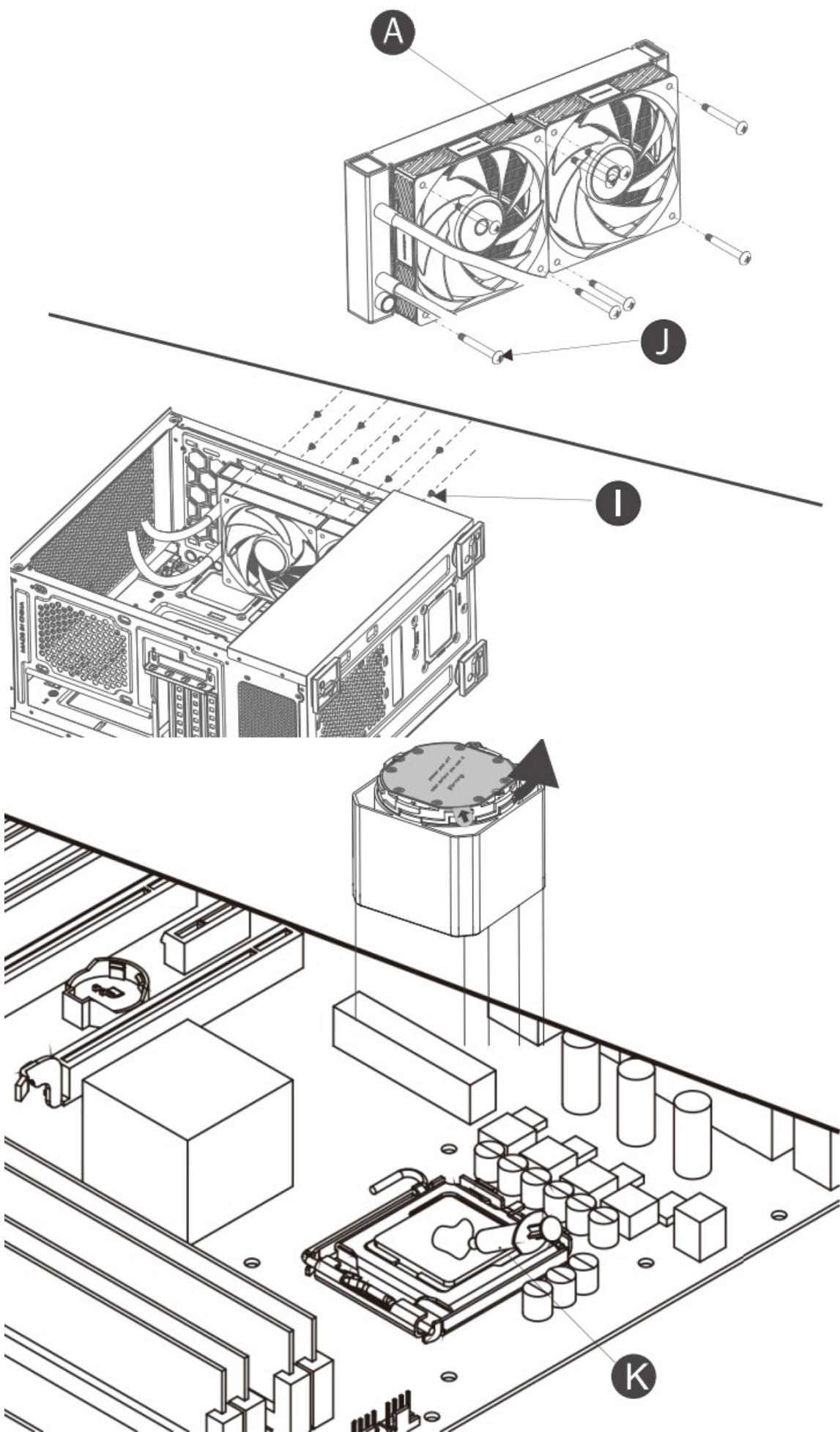
Specifications

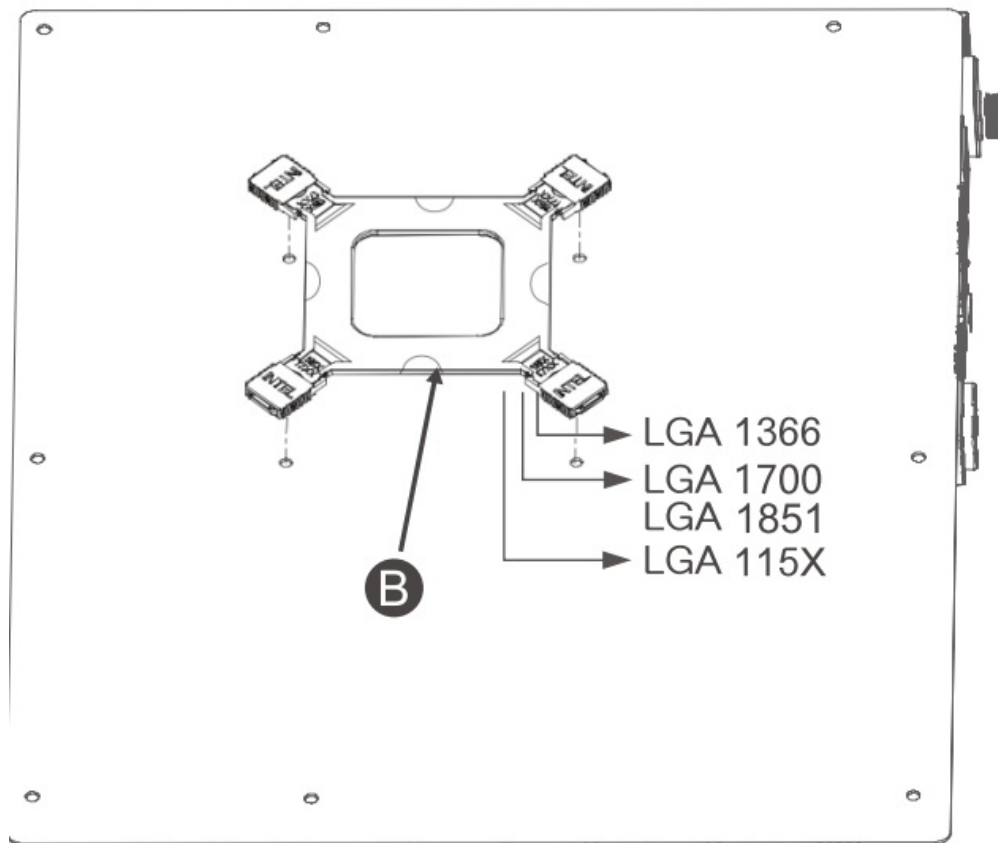
-  **275x120x27mm**
 - 12VDC / 0.15A
-  **70x70x62mm**
 - 1 2V DC / 0.45A
-  **11460**

WHAT'S IN THE BOX

			 x2
			 x1
 Intel x1	 AMD x1	 x4	
 Intel x4 115x/1700/1851/1366	 Intel x4 2011/2066	 AMD x4 AM4/AM5	
 x8	 x8	 x1	
			

Intel/AMD





Installation options

LCD Screen Connection

- The LCD has a magnetic base that can be attached to the flat metal surfaces of the computer case.
- **A.** USB Cable Connection: Use this connection if you want to install the screen on the outside of the computer case. Connect the USB cable to a rear or front USB port.
- **B.** USB Cable Connection to Motherboard: Use this connection if you want to install the screen inside the case. Connect the 9-pin USB cable to the motherboard.

Lighting

- **A.** Automatic ARGB Lighting Mode
- **B.** Lighting Mode with ARGB Control
- **Note:** Ensure that the motherboard or controller is compatible with 3-pin +5V ARGB lighting. Make sure the ARGB connector of the liquid cooling system is connected to the correct ARGB control device port; otherwise, the components could be damaged.
- If you are unsure about the compatibility of your motherboard or controller with ARGB lighting, please contact us for assistance.

Control Software

- Once the liquid cooling system is installed, turn on your computer and download the software from www.marsgaming.eu to customise the screen.

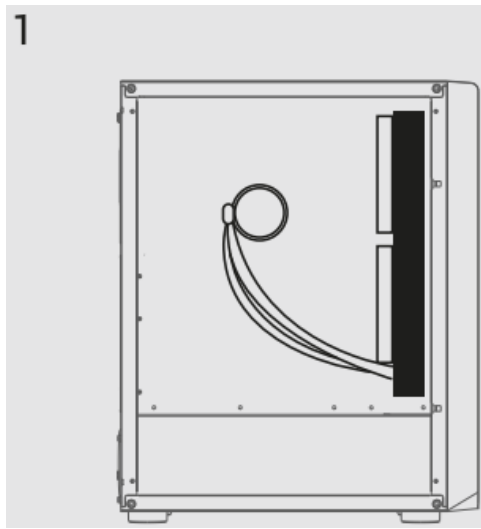
Recommendations and Safety Reminders

- Keep children away from the equipment parts while installing the computer.
- Unplug the computer's power cable before installation.
- Protect your hands and fingers when handling and installing components.
- Make sure the processor socket is compatible with the heatsink.
- Remove the protective sticker from the heatsink block.
- Apply thermal paste to the processor. Excessive thermal paste can worsen heat dissipation.
- Tighten the mounting screws gently to the stop; do not apply excessive force.
- It is recommended that the equipment include fans to bring fresh air into the system to maintain the processor and other components at optimal temperatures.
- Keep the computer in a clean and dry environment; dust and moisture can limit the lifespan of the components.
- Do not modify the wiring or install adapters that are not included in the packaging.
- Do not use screws, washers, or any other hardware not included in the packaging. If you need assistance installing the product, please contact our customer service.
- **Important Notice:** If you notice any damage or irregularities in the product, do not proceed with installation and contact our customer service immediately. Failure to follow these instructions could result in injury or additional damage.

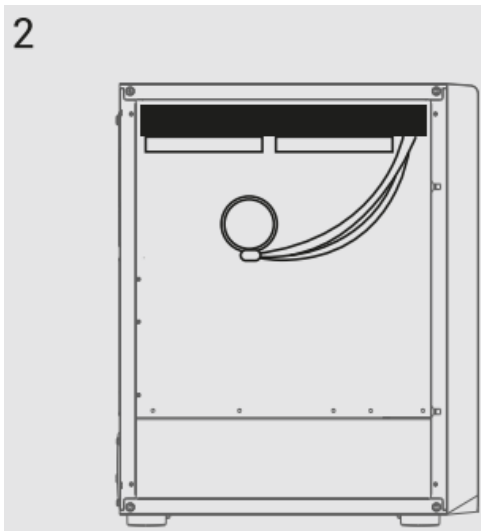
Troubleshooting

- Excessive noise from the pump or cooling circuit: The cooling circuit and pump may generate noise due to air bubbles inside the circuit, which can occur when the liquid cooling is used for the first time.
- Turn on the system and let the cooling pump run for 30 minutes. If the noise persists, install the radiator and tubes in the orientation and location shown in the diagrams for the best thermal performance and lowest noise.

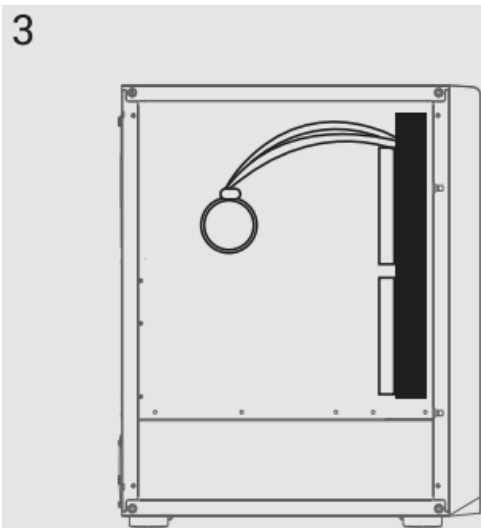
1. **Figure 1** — Most recommended



2. **Figure 2** — Recommended



3. **Figure 3** — Not recommended



- **High processor temperature:** Check if the thermal paste is in good condition; if it is old, clean it and apply a new layer. Verify that the mounting is correct and there is no gap between the processor surface and the heatsink base.
- Ensure that the screws on the motherboard mounting are tightened to the stop without applying excessive force. Check the fan speed (RPM) through the BIOS menu or the monitoring program provided by the motherboard manufacturer.

- If the airflow in the computer is insufficient, add fans to bring fresh air into the system.
- **Fan not spinning:** Ensure that no object is blocking the fan blades. Check that the PWM connectors of the fans are connected as shown in the connection diagram.
- Check the fan speed (RPM) through the BIOS menu or the monitoring program provided by the motherboard manufacturer.
- **Excessive fan noise:** The fan may generate noise if the speed is very high; adjust the fan speed curves in the BIOS to reduce fan speed (RPM) without compromising cooling.
- If the fan has been exposed to dust or dirt, it may have deteriorated; contact us for assistance.
- **Software does not detect the screen:** Ensure the cooling pump connector is connected to a 9-pin USB port on the motherboard or via the USB cable to an external case port, as shown in the installation diagram.
- If the problem persists, connect the cable to another USB port and reinstall the software.
- **Lighting does not turn on:** Verify that the lighting works through connection mode A (automatic ARGB lighting).
- **ARGB control lighting does not work:** Verify that the lighting is connected through connection mode B (ARGB control lighting).
- Connection with ARGB motherboard — Verify that the ARGB connector of the product is connected to a 3-pin +5V ARGB connector on the ARGB motherboard.
- Download the ARGB control application from the motherboard manufacturer's website.
- Connection with ARGB controller — Verify that the ARGB connector of the product is connected to a 3-pin +5V ARGB connector on the ARGB controller.
- **Attention:** Ensure that the motherboard or controller is compatible with 3-pin +5V ARGB lighting and that the ARGB connector of the cooler is connected to the correct port; otherwise, the components could be damaged.

Warranty

- Your original purchase receipt will be required to use the warranty service. Keep it in a safe place. Device tampering, technical modifications of any kind, and damage due to external mechanical forces will void your warranty.

- To read the warranty terms and conditions, Visit es.marsgaming.eu/es/terms

Compliance

- You can consult the European Union Declaration of Conformity for this product at www.marsgaming.eu/-/en/conformity
- For more information, visit www.marsgaming.eu

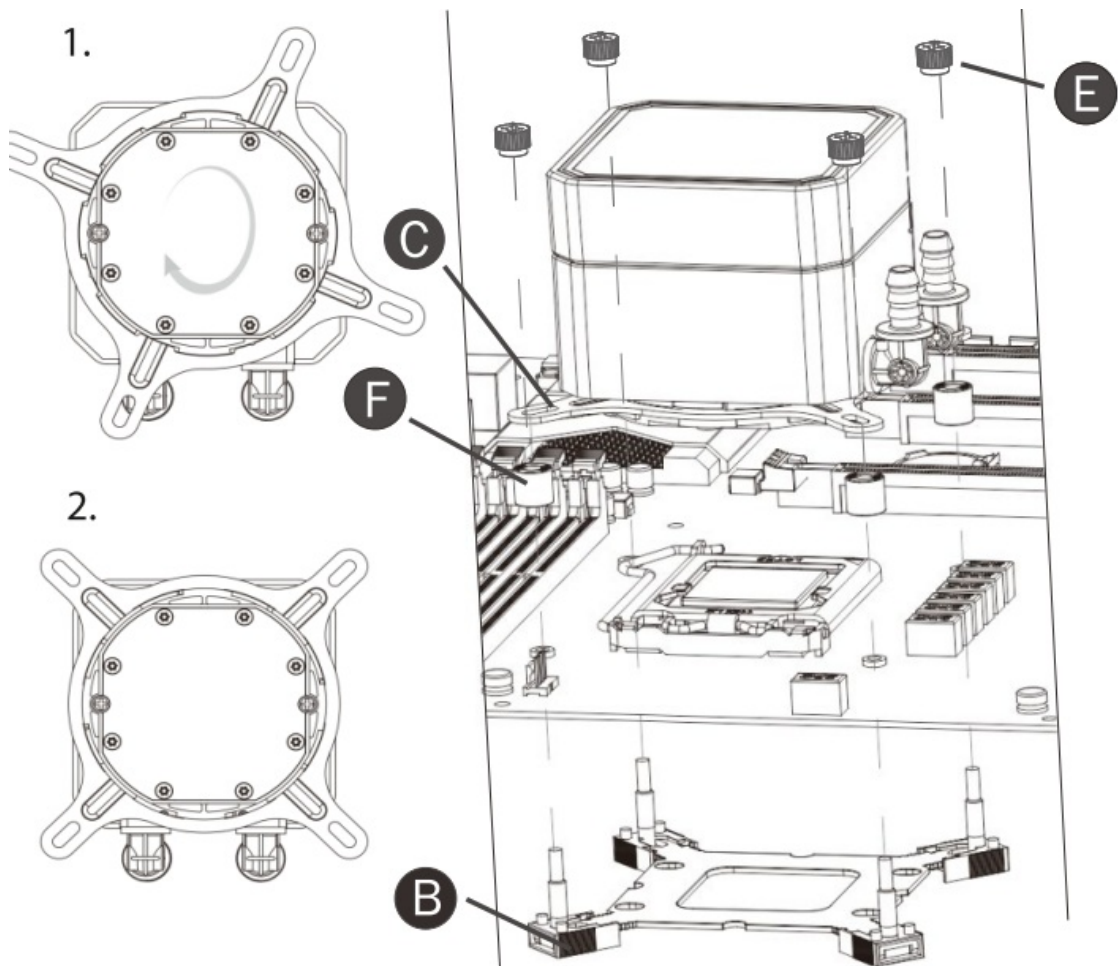
Disposal and Recycling

- At the end of the product's lifespan, it must not be disposed of with regular household waste.
- To promote environmental sustainability and ensure proper waste management, take the product to a designated collection and recycling centre.

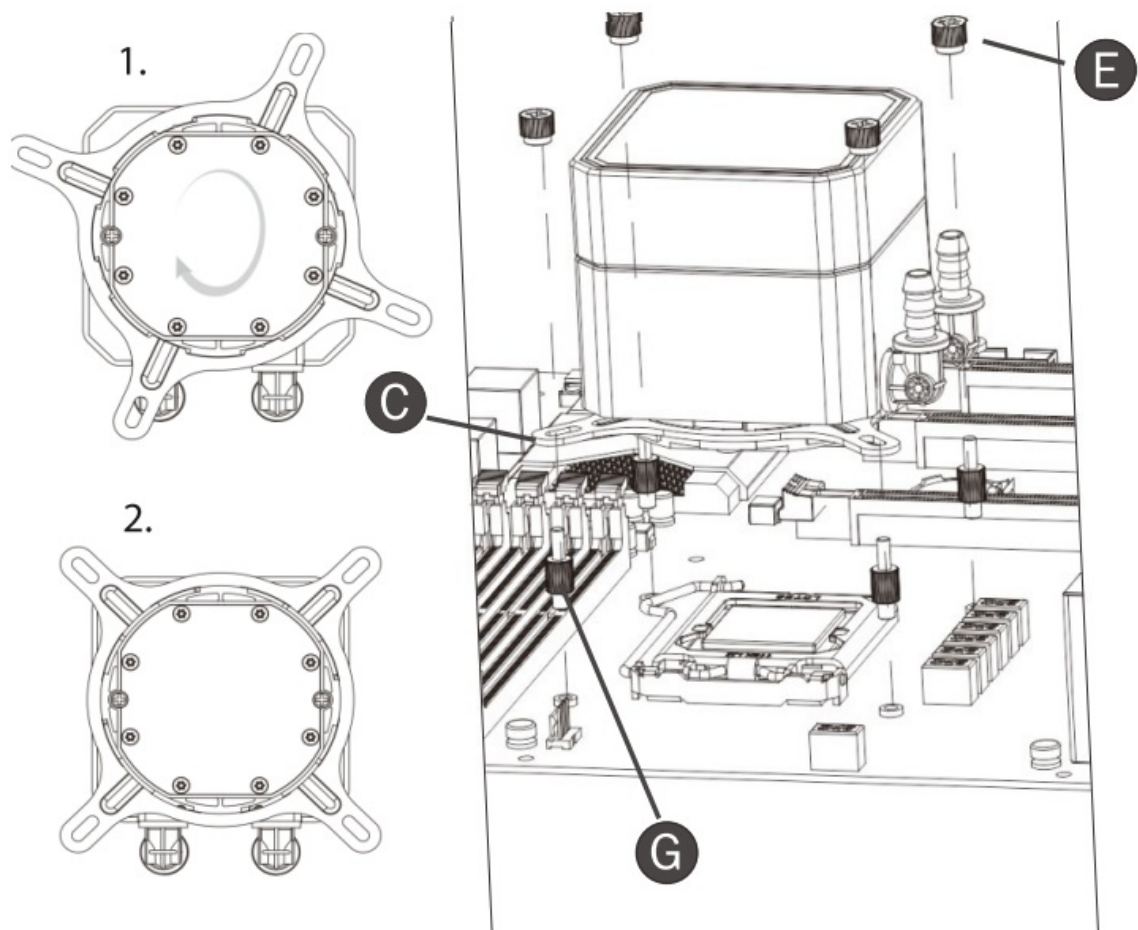
Contact

- If you have questions or problems with the product, do not hesitate to contact us: attcliente@biomag.es/+34945124598

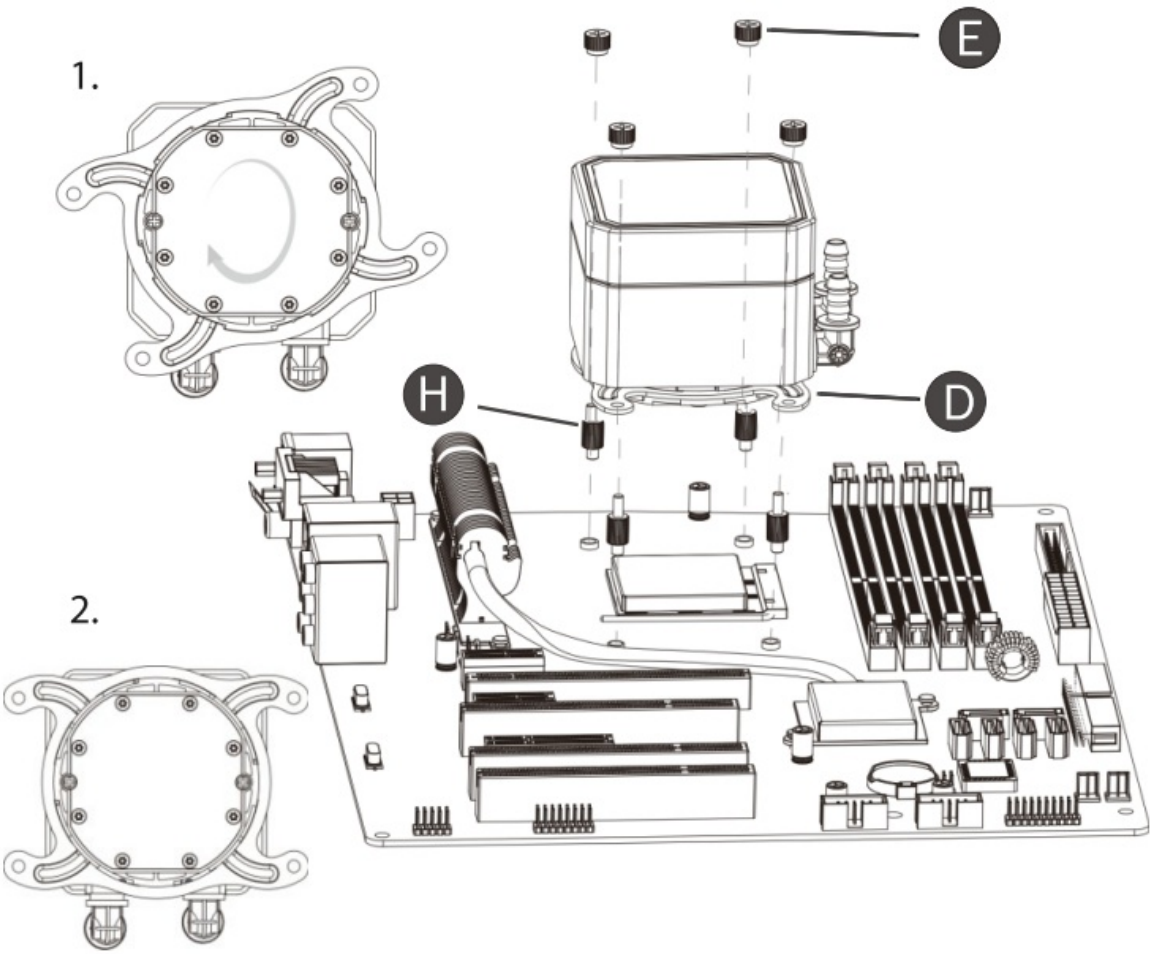
Intel 1851/1700/1366/ 1200/115X



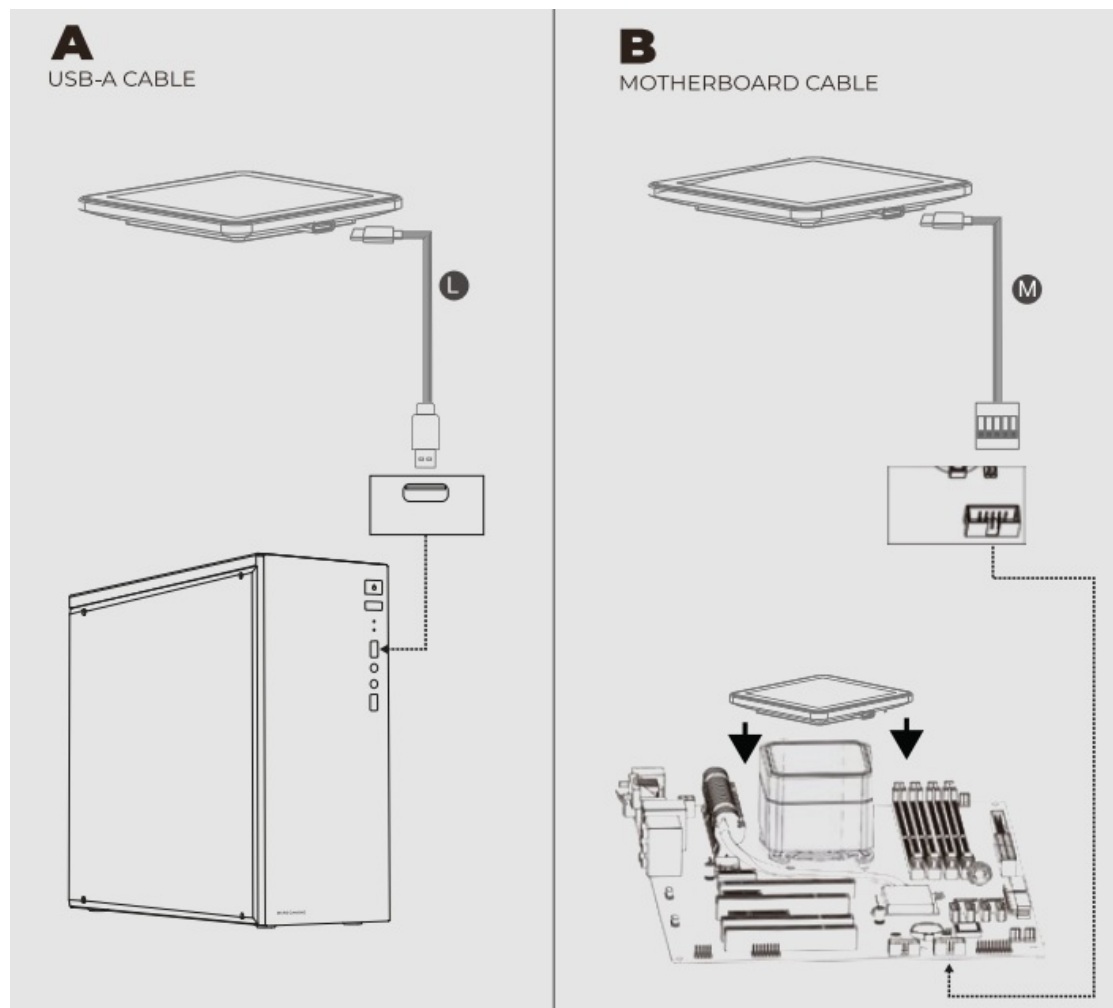
Intel 2066/2011/2011-3



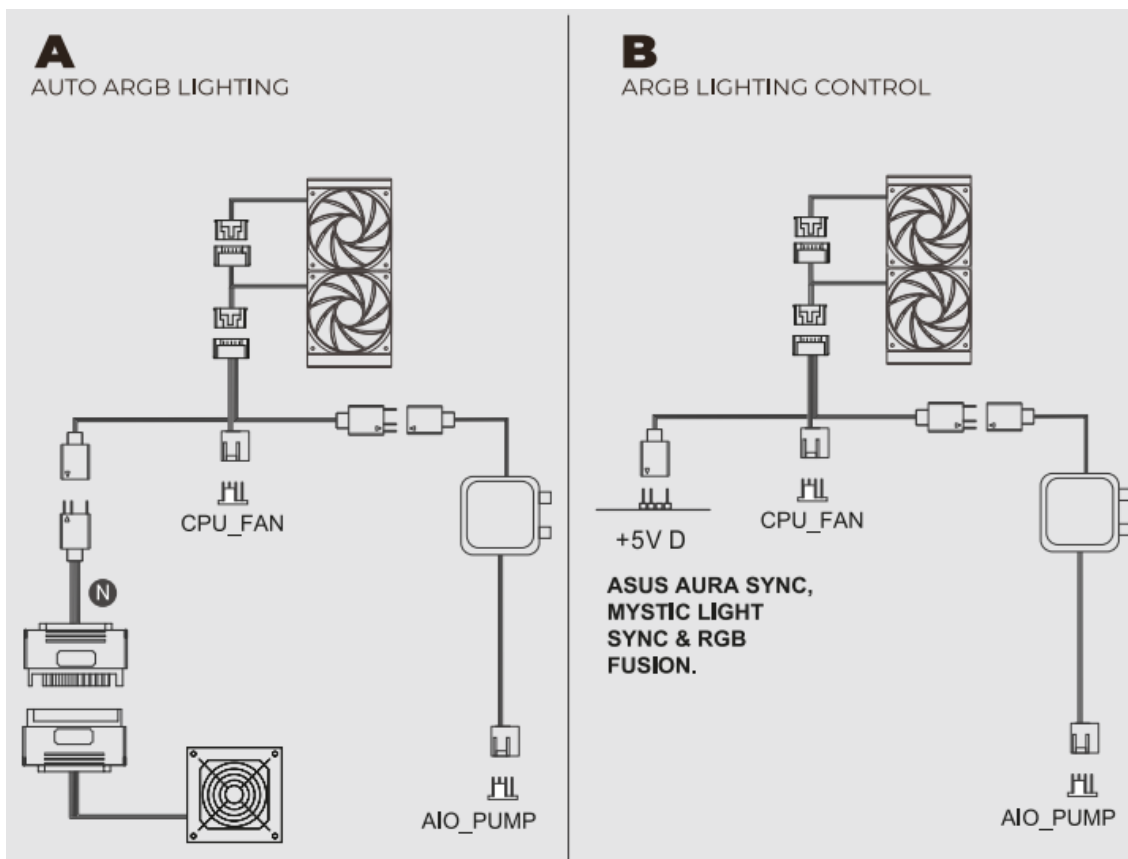
AMD



PUMP CONNECTION




CONNECTION



- **MARSGAMING**
- **Biomag S. L.**
- **EU office:**
- **Address: Barratxi 39, Pab. 3**
- **01013, Vitoria, SPAIN**
- **Telephone: +34945124598**
- **Email: attcliente@biomag.es**




Documents / Resources

	<p>MARS GAMING ML-VISIONPRO240W Processor All in One Liquid Cooler [pdf] User Manual</p> <p>MLVISIONPRO240W, ML-VISIONPRO240W Processor All in One Liquid Cooler, ML-VISIONPRO240W, Processor All in One Liquid Cooler, All in One Liquid Cooler, Liquid Cooler, Cooler</p>
--	---

References

- [User Manual](#)


MARS
GAMING


All-In-One Liquid Cooler, cooler, Liquid Cooler, MARS GAMING, ML-VISIONPRO240W , ML-VISIONPRO240W Processor All in One Liquid Cooler, MLVISIONPRO240W, Processor All in One Liquid Cooler

Leave a comment

Your email address will not be published. Required fields are marked *

Comment *

Name

Email

Website

☐ Save my name, email, and website in this browser for the next time I comment.

Post Comment

Search:

e.g. whirlpool wrf535swhz

Search

[Manuals+](#) | [Upload](#) | [Deep Search](#) | [Privacy Policy](#) | [@manuals.plus](#) | [YouTube](#)

This website is an independent publication and is neither affiliated with nor endorsed by any of the trademark owners. The "Bluetooth®" word mark and logos are registered trademarks owned by Bluetooth SIG, Inc. The "Wi-Fi®" word mark and logos are registered trademarks owned by the Wi-Fi Alliance. Any use of these marks on this website does not imply any affiliation with or endorsement.