



MARQUANT 006041 Ceiling Attachment Instruction Manual

[Home](#) » [MARQUANT](#) » MARQUANT 006041 Ceiling Attachment Instruction Manual 

MARQUANT®

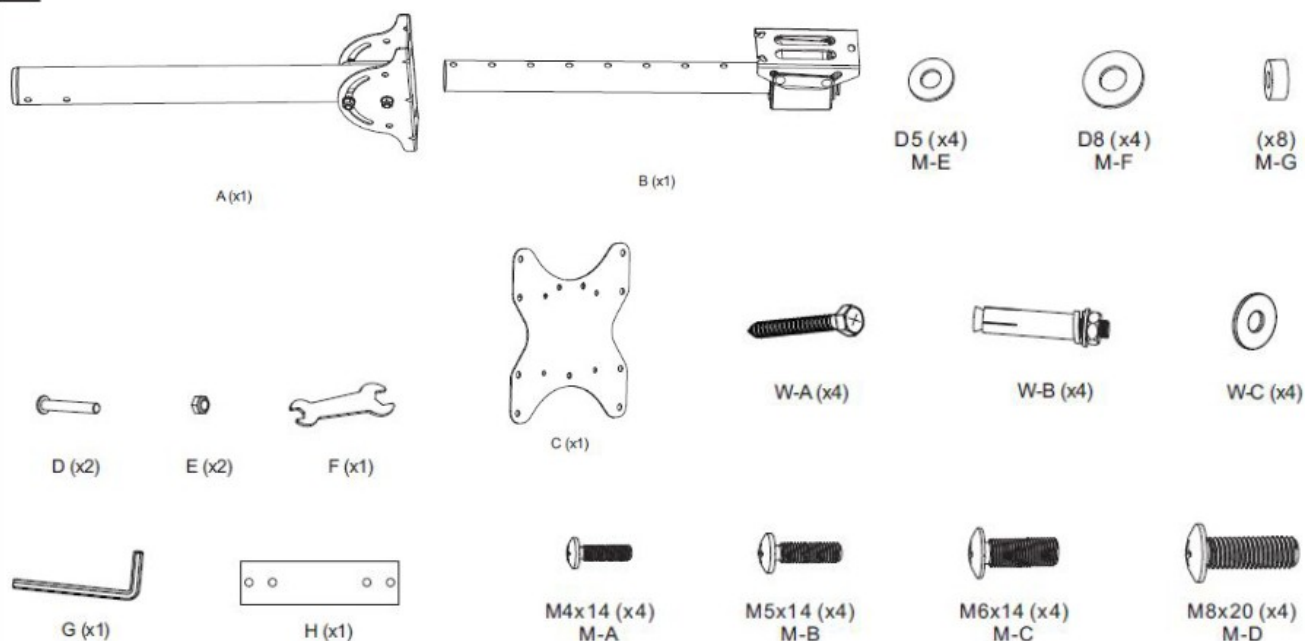
006041



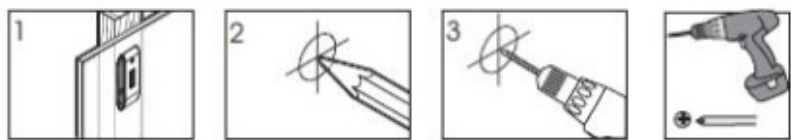
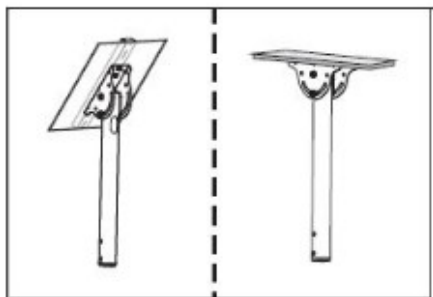
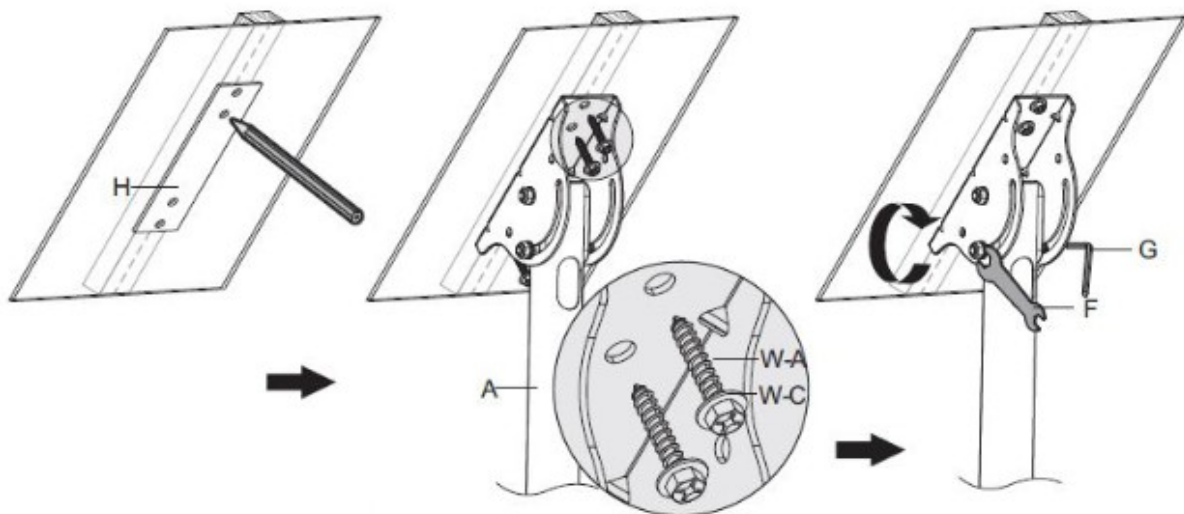
CEILING ATTACHMENT OPERATING INSTRUCTIONS

Important! Read the user instructions carefully before use. Save them for future reference. (Translation of the original instructions),

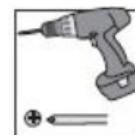
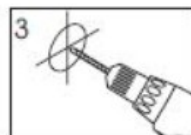
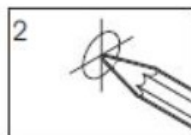
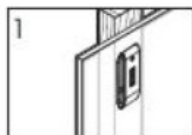
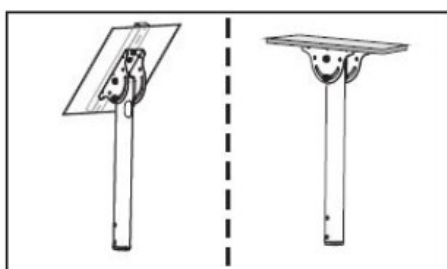
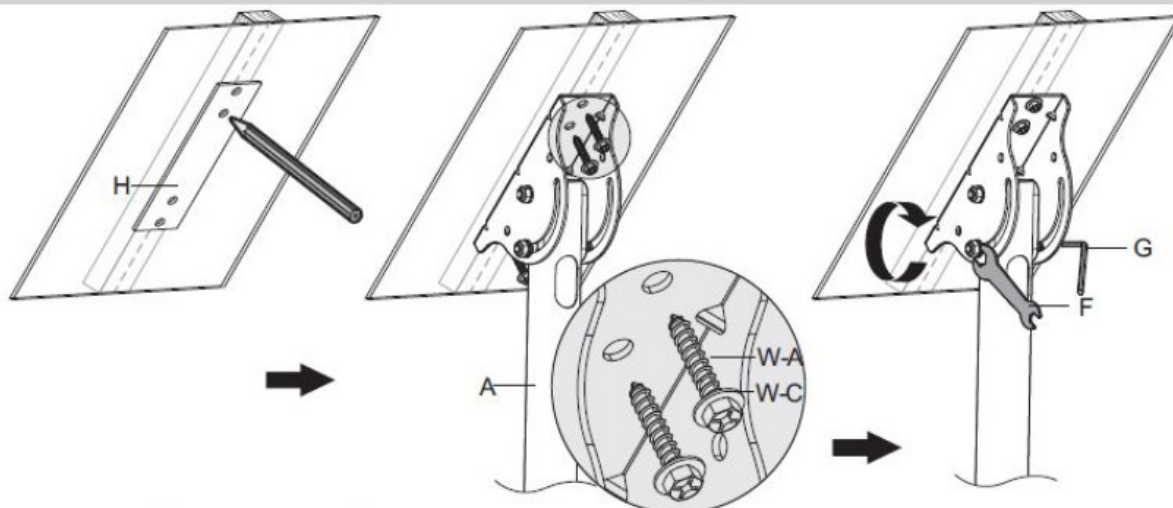
1



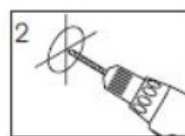
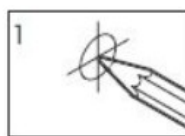
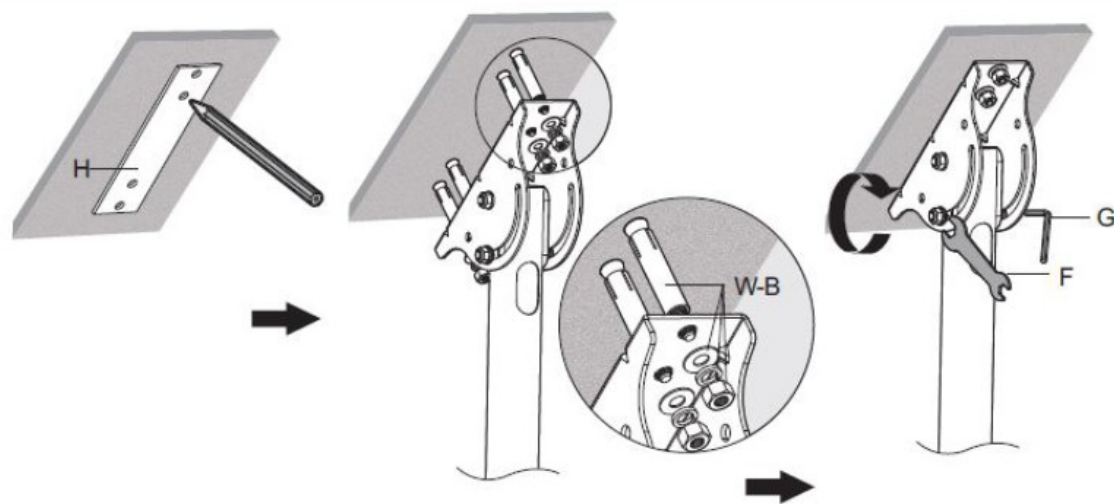
2



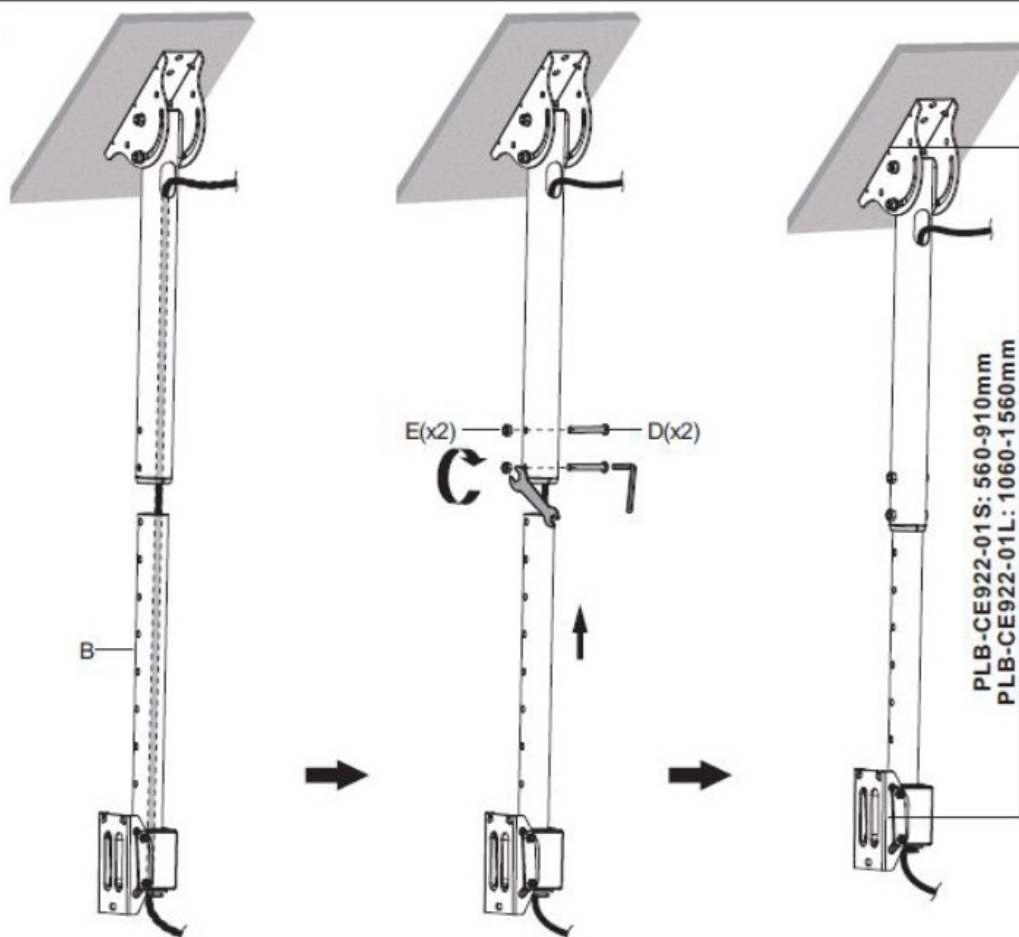
3



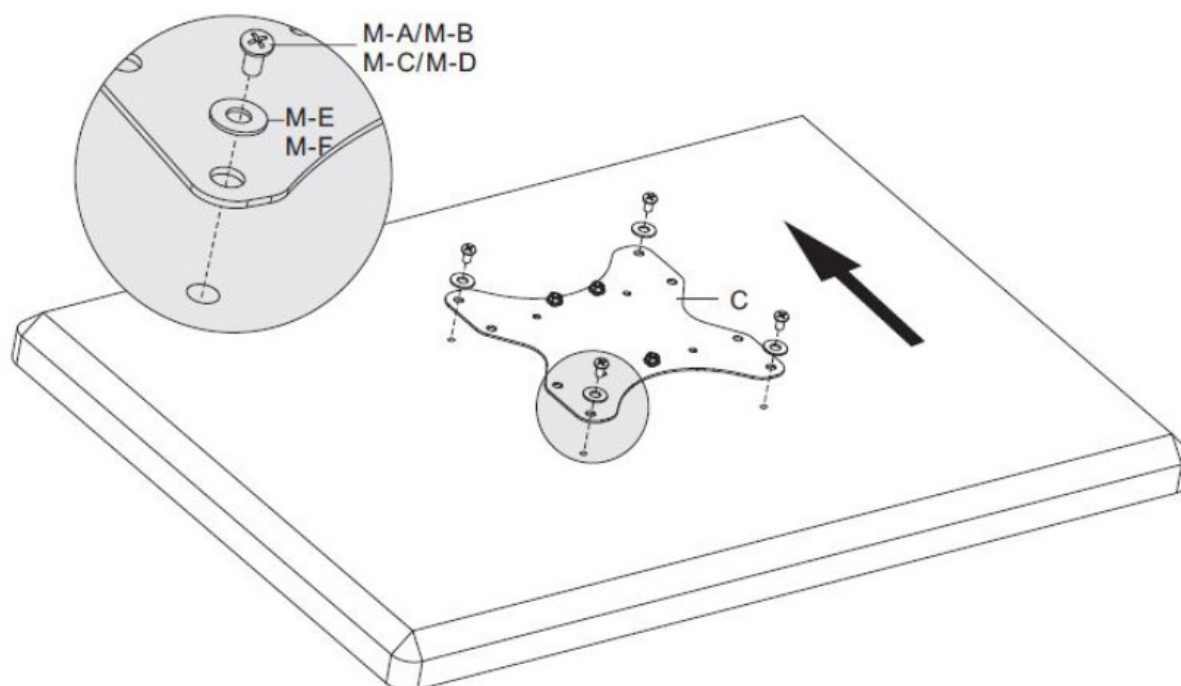
4



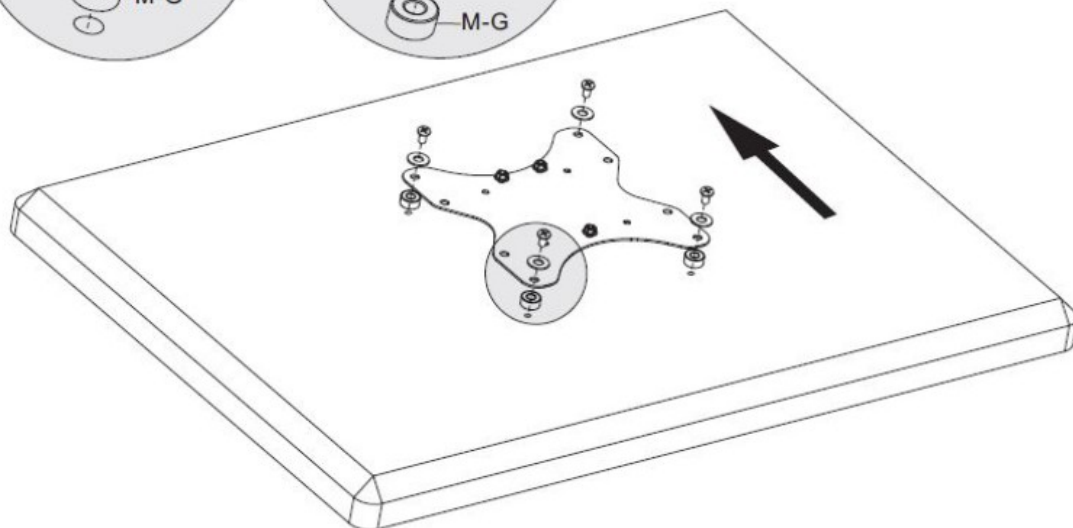
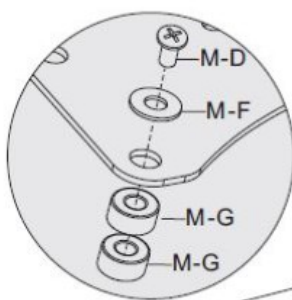
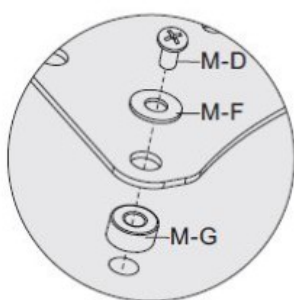
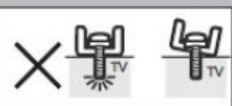
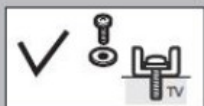
5



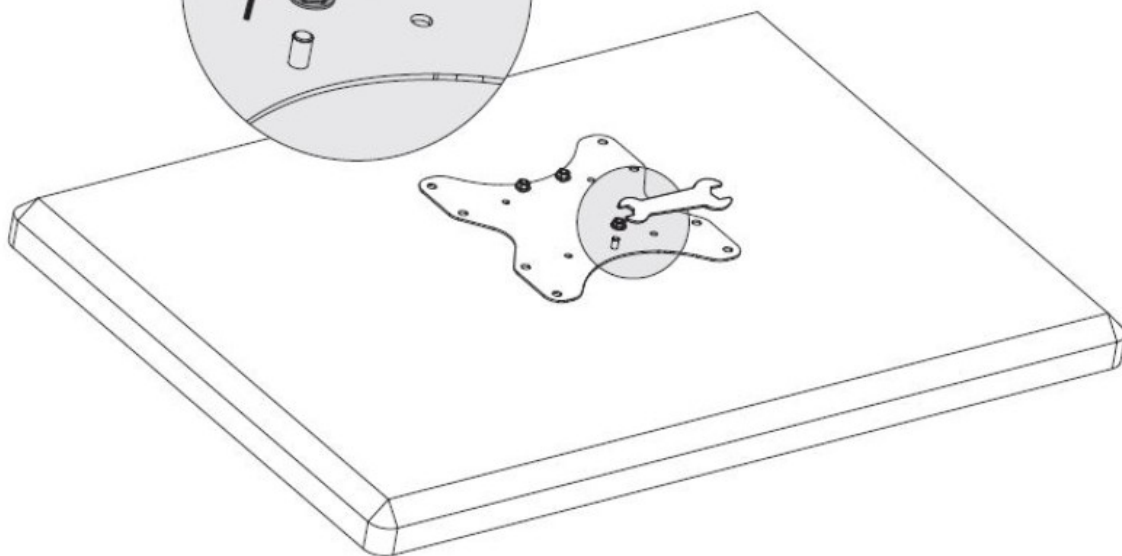
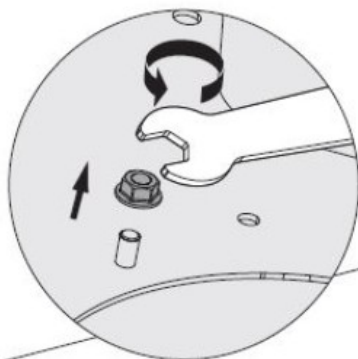
6



7



8



Contents

[1 SAFETY](#)

[INSTRUCTIONS](#)

[2 TECHNICAL DATA](#)

[3 INSTALLATION](#)

[4 Documents / Resources](#)

[5 Related Posts](#)


SAFETY INSTRUCTIONS

- Do not exceed the permitted maximum load — risk of serious personal injury and/ or material damage.
- The fasteners must be fastened according to the specifications in the Instructions. Incorrect installation can result In personal injury and/or material damage.
- Safety equipment and suitable tools must be used.
- Make sure that the supporting surface will safely support the combined weight of the equipment and all attached hardware and components.
- Tighten the screws firmly, but not too hard risk of material damage.
- This product contains small parts that can result in a risk of suffocation If swallowed. Keep these parts out of the reach of children.
- The product is only intended for Indoor use. Using It outdoors can result in personal injury and/or material damage.

IMPORTANT:

- **Check that you have all the parts in the list. Contact Julia's Customer Services if any parts are missing or damaged.**
- **Check at least every 3 months that the bracket is correctly mounted.**

SYMBOL

	Approved as per applicable directives,
---	--

TECHNICAL DATA

Maximum weight	50 kg
Suits screen size	23"- 42"
Length	560 -910 mm


INSTALLATION

FIG. 1	FIG. 5
FIG. 2	FIG. 6
FIG. 3	FIG. 7
FIG. 4	FIG. 8

Jula reserves the right to make changes.
 For latest version of operating instructions, see www.jula.com

JULA AB, BOX 363, SE-532 24 SKARA
 2022-01-06
 © Jula AB

Documents / Resources

	<p>MARQUANT 006041 Ceiling Attachment [pdf] Instruction Manual 006041, Ceiling Attachment</p>
---	--