

MARLEY EM-JA021 Wireless Portable Speaker User Guide

[Home](#) » [MARLEY](#) » MARLEY EM-JA021 Wireless Portable Speaker User Guide 

Contents

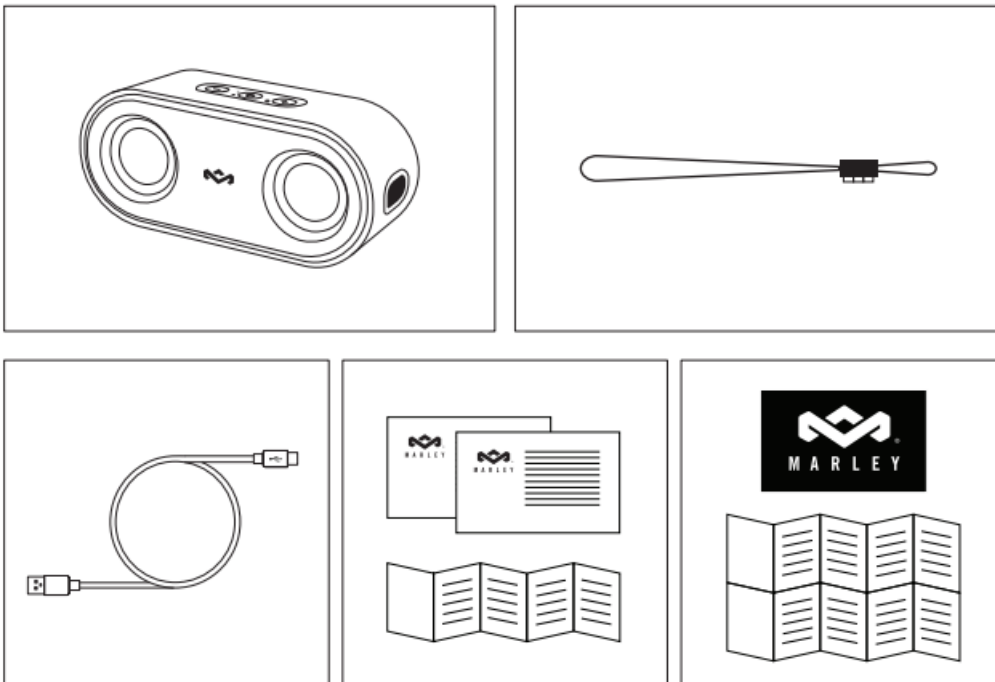
- [1 MARLEY EM-JA021 Wireless Portable Speaker](#)
- [2 WHAT IS IN BOX](#)
- [3 COMPONENTS](#)
- [4 BLUETOOTH](#)
- [5 MULTI PAIR MODE](#)
- [6 EQ MODE](#)
- [7 CONTROLS](#)
- [8 COMPLIANCE INFO](#)
- [9 Documents / Resources](#)
 - [9.1 References](#)
- [10 Related Posts](#)




MARLEY EM-JA021 Wireless Portable Speaker




WHAT IS IN BOX





STATUS


 Pairing Mode


 Paired


 AUX Mode

 Multi Pair Mode


 Multi Pair Mode


 Full Power

 Charging

 Low Power


LED INDICATION

 Blinking

 On


 On

 On

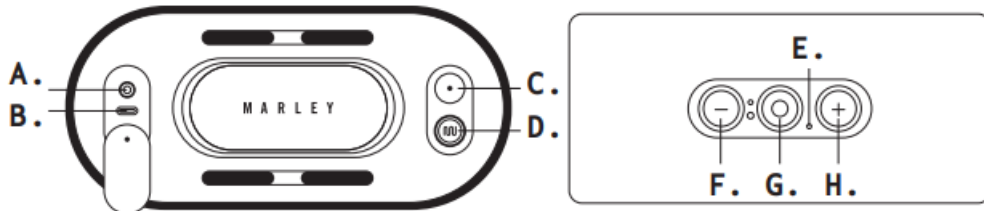
 Blinking

 Off

 On

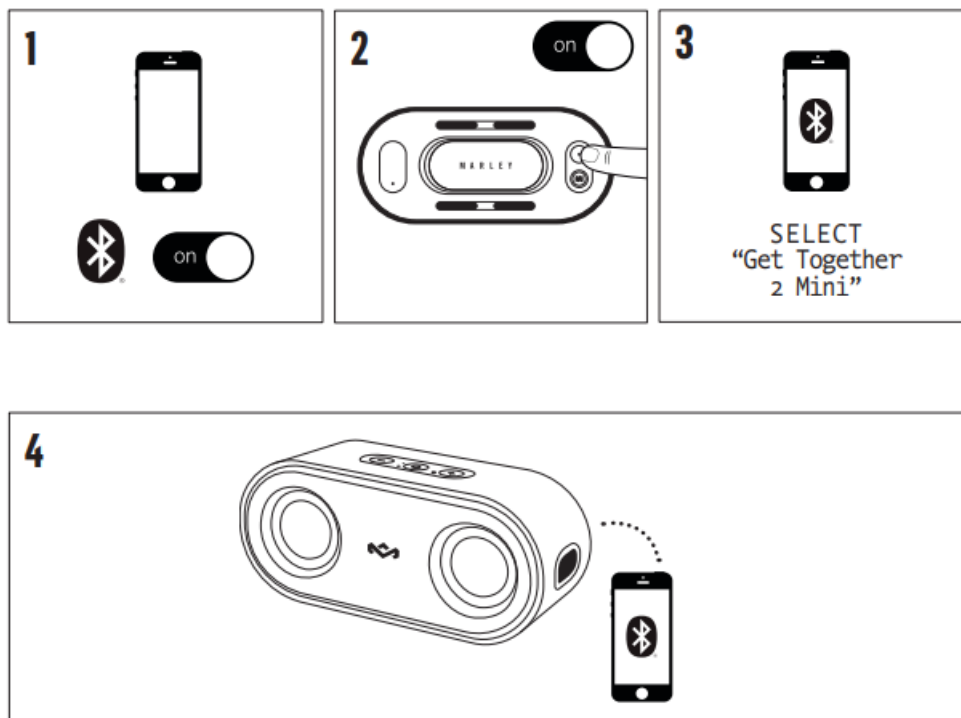
 Blinking

COMPONENTS

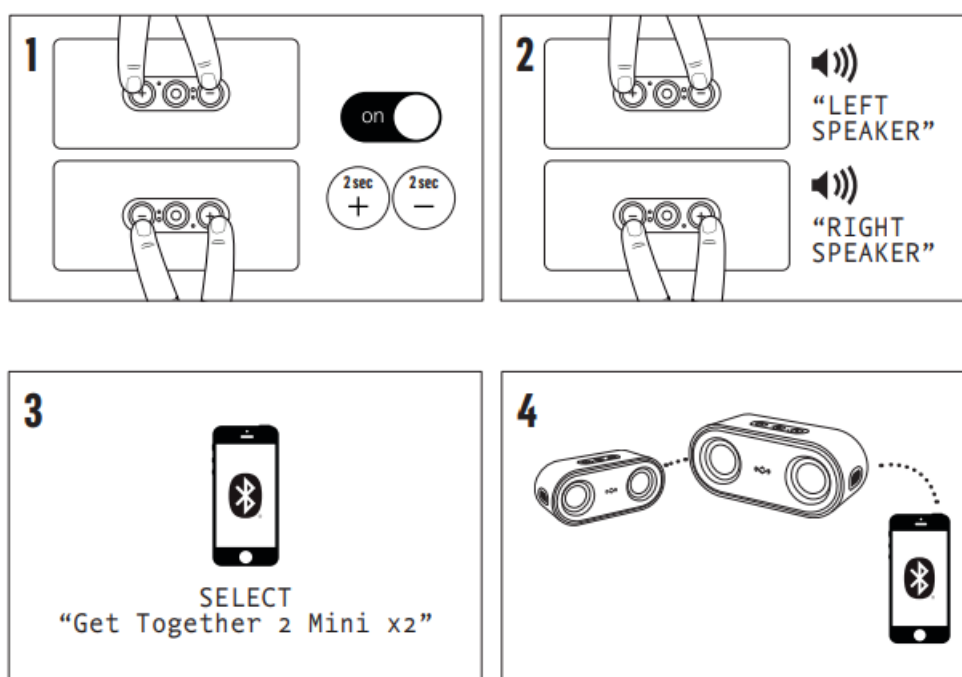


- AUX In
- USB-C Charging Port
- Power
- EQ Mode
- LED Indication
- Volume Down / Skip Backward
- Volume Up / Skip Forward

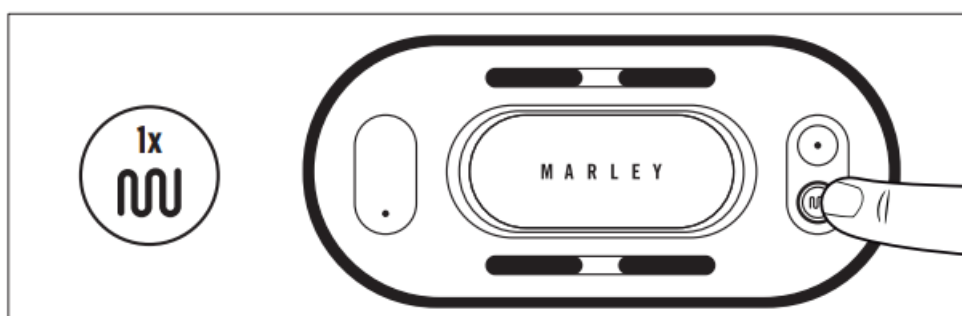
BLUETOOTH



MULTI PAIR MODE



EQ MODE



STATUS

- EQ Mode – Bass Boost
- EQ Mode – Pop
- EQ Mode – Classic

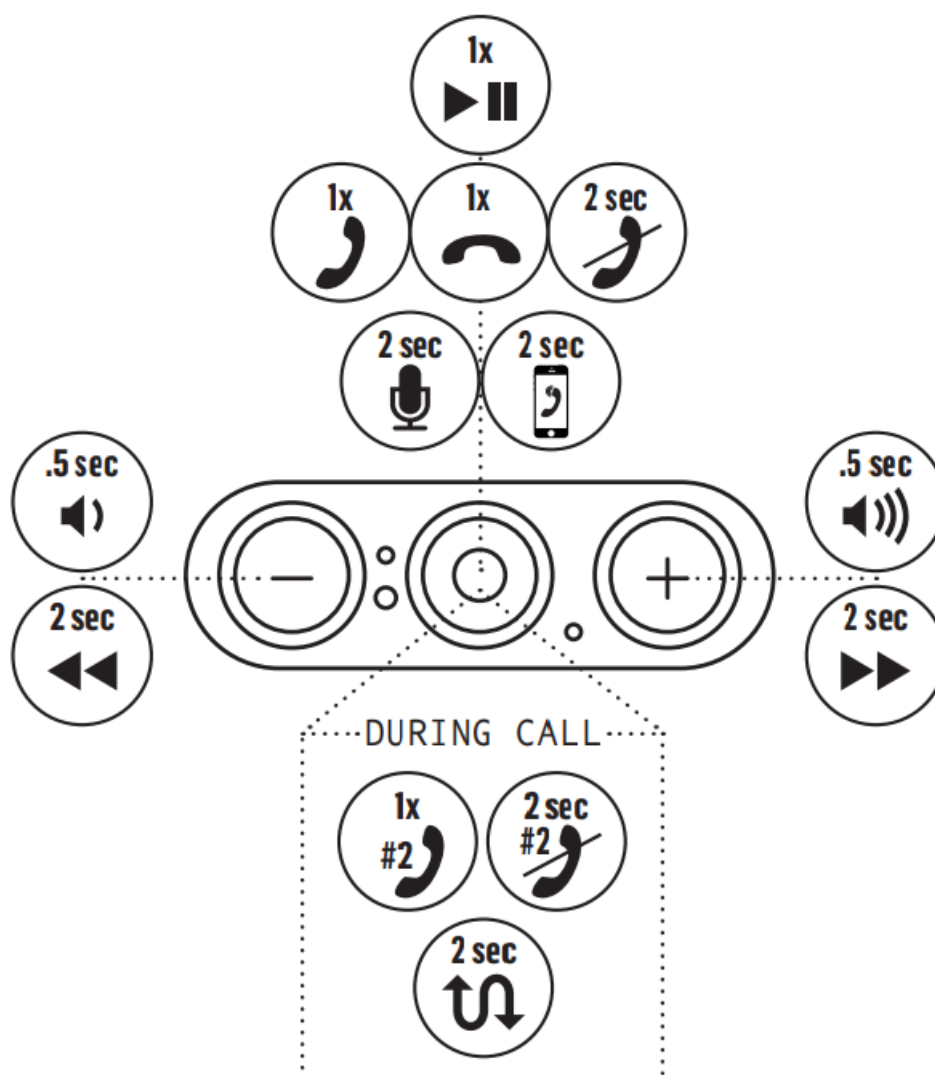
LED INDICATION

● On

○ On

● On

CONTROLS



Full instruction and warranty details can be found at <https://www.thehouseofmarley.com/customer-support/instruction-books>

COMPLIANCE INFO

GET TOGETHER 2 MINI

READ ALL INSTRUCTIONS BEFORE USE AND SAVE THESE INSTRUCTIONS FOR FUTURE REFERENCE.

This equipment has been tested and found to comply with the limits for a Class B digital device, pursuant to part 15 of the FCC Rules. These limits are designed to provide reasonable protection against harmful interference in a residential installation. This equipment generates, uses, and can radiate radio frequency energy and, if not installed and used in accordance with the instructions, may cause harmful interference to radio communications. However, there is no guarantee that interference will not occur in a particular installation. If this equipment does cause harmful interference to radio or television reception, which can be determined by turning the equipment off and on, the user is encouraged to try to correct the interference by one or more of the following measures:

- Reorient or relocate the receiving antenna.
- Increase the separation between the equipment and receiver.
- Connect the equipment into an outlet on a circuit different from that to which the receiver is connected.

Consult the dealer or an experienced radio/TV technician for help.

This device complies with FCC radiation exposure limits set forth for an uncontrolled environment. This device complies with Part 15 of the FCC Rules. Operation is subject to the following two conditions: (1) this device may not cause harmful interference, and (2) this device must accept any interference received, including interference that may cause undesired operation.

FCC RF EXPOSURE STATEMENT:

This transmitter must not be co-located or operating in conjunction with any other antenna or transmitter. This device complies with FCC radiation exposure limits set forth for an uncontrolled environment.

CAUTION!

Any changes or modifications not expressly approved by the party responsible for compliance could void the user's authority to operate the equipment.

ISED STATEMENT

This device complies with the Innovation, Science, and Economic Development Canada license-exempt RSS standard(s). Operation is subject to the following two conditions: (1) this device may not cause interference, and (2) this device must accept any interference, including interference that may cause undesired operation of the device. This Class B digital apparatus complies with Canadian ICES-003.

ISED RF EXPOSURE STATEMENT:

The device is compliant with RF exposure guidelines, users can obtain Canadian information on RF exposure and compliance.

BATTERY REPLACEMENT STATEMENT IN EUROPE

Your Get Together 2 Mini includes a rechargeable battery designed to last the lifetime of the product. In the unlikely event that you should require a replacement battery, please contact Consumer Relations who will supply details of the warranty and out-of-warranty replacement battery service.

BATTERY DIRECTIVE

This symbol indicates that batteries must not be disposed of in domestic waste as they contain substances that can be damaging to the environment and health. Please dispose of batteries in designated collection points.



WEEE EXPLANATION

This marking indicates that this product should not be disposed of with other household wastes throughout the EU. To prevent possible harm to the environment or human health from uncontrolled waste disposal, recycle it responsibly to promote the sustainable reuse of material resources. Hereby, FKA Brands Ltd, declares that this radio equipment is in compliance with the essential requirements and other relevant provisions of Directive 2014/53/EU. A copy of the Declaration of Conformity can be obtained from








www.thehouseofmarley.co.uk/declaration-of-conformity

Ltd. Marley, the Marley logo, Bob Marley and theBob Marley logo are registered trademarks of Fifty-Six Hope Road Music Limited and any use of such marks by The House of Marley is under license. The Bluetooth® word mark and logos are registered trademarks owned by Bluetooth® SIG, Inc. and any use of such marks by The House of Marley is under license.

Documents / Resources

	MARLEY EM-JA021 Wireless Portable Speaker [pdf] User Guide EM-JA021, Wireless Portable Speaker, EM-JA021 Wireless Portable Speaker, Portable Speaker, Speaker
	MARLEY EM-JA021 Wireless Portable Speaker [pdf] User Guide EM-JA021, Wireless Portable Speaker, Portable Speaker, Wireless Speaker, EM-JA021, Speaker

References

-  [Bob Marley](#)
-  [Declaration of Conformity - The House of Marley UK](#)
-  [House of Marley | Bluetooth Speakers, Headphones & Earbuds inspired by Bob Marley](#)
-  [House of Marley Bluetooth Speakers, Headphones, Earbuds & Turntables Inspired by Bob Marley - True Wireless Earbuds](#)
-  [Declaration of Conformity - The House of Marley UK](#)
-  [Instruction Books | House of Marley](#)
-  [House of Marley | Bluetooth Speakers, Headphones & Earbuds inspired by Bob Marley](#)