



MARLEY EM-JA021 Get Together 2 Mini Bluetooth Speaker User Guide

[Home](#) » [MARLEY](#) » MARLEY EM-JA021 Get Together 2 Mini Bluetooth Speaker User Guide 

Contents

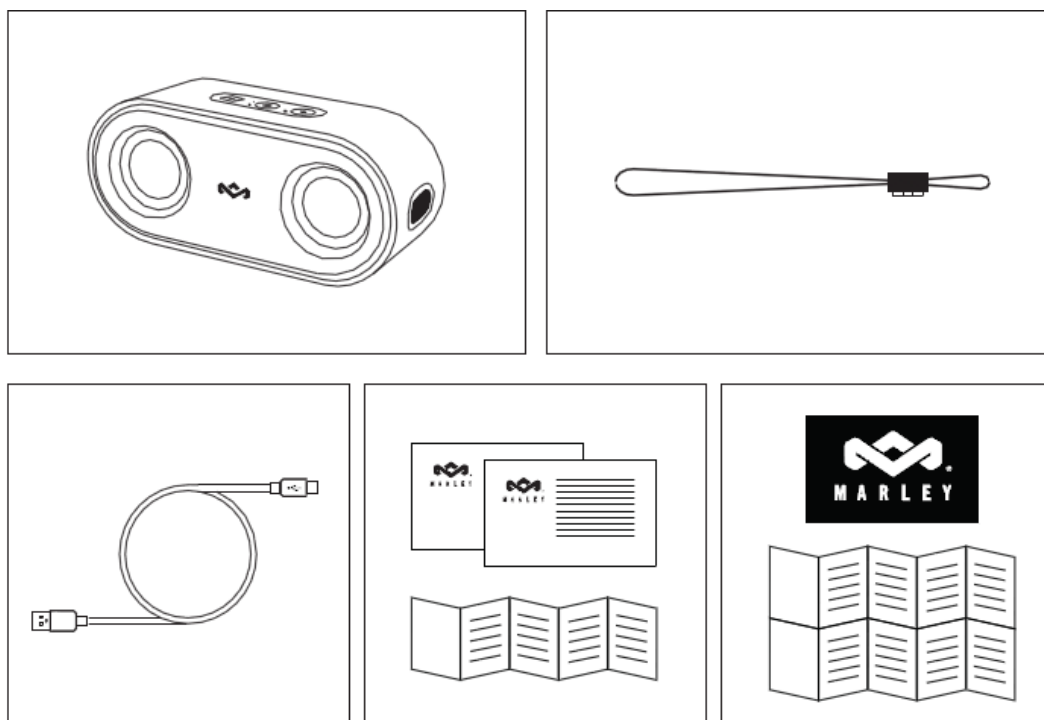
- [1 MARLEY EM-JA021 Get Together 2 Mini Bluetooth Speaker](#)
- [2 COMPONENTS](#)
- [3 CONTROLS](#)
- [4 FCC RF EXPOSURE STATEMENT:](#)
- [5 Documents / Resources](#)
- [6 Related Posts](#)



MARLEY EM-JA021 Get Together 2 Mini Bluetooth Speaker











QUICK START GUIDE GET TOGETHER 2 MINI



STATUS

配對模式

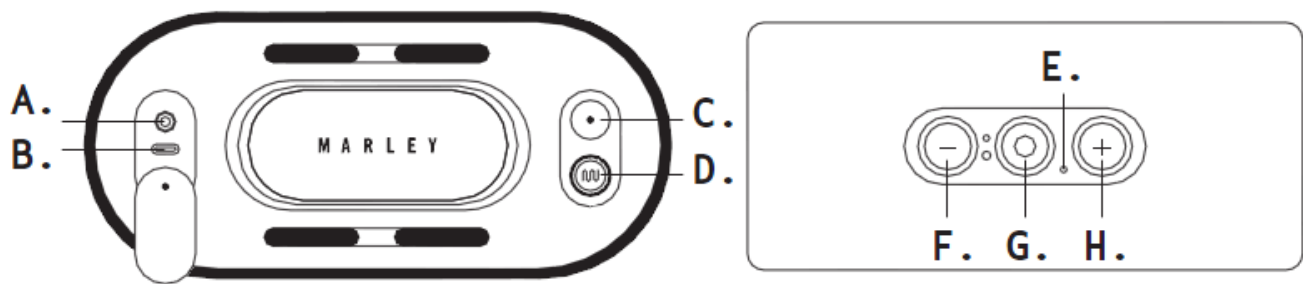
-  Pairing Mode
配對模式
-  Paired
配對成功
-  AUX Mode
Aux配對模式
-  Multi Pair Mode - #1
配對模式 配對模式
-  Multi Pair Mode - #2
配對模式 配對模式
-  Full Power
滿電模式
-  Charging
充電中
-  Low Power
低電量

LED INDICATION

LED指示燈

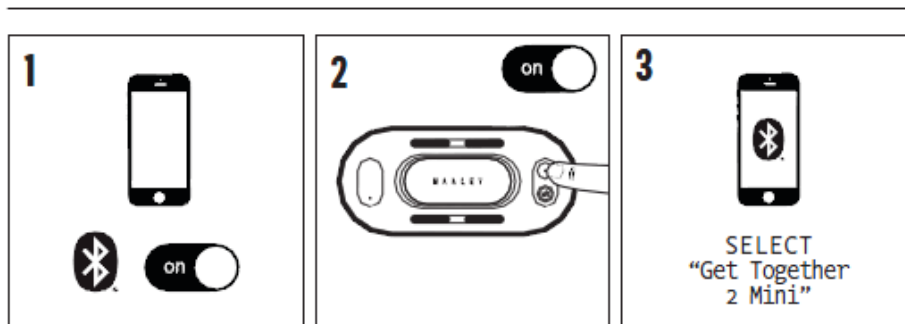
-  Blinking
藍燈閃爍
-  On
藍燈常亮
-  On
紅燈常亮
-  On
紫燈常亮
-  Blinking
藍燈閃爍
-  Off
白燈常亮
-  On
紅燈常亮
-  Blinking
紅燈閃爍

COMPONENTS

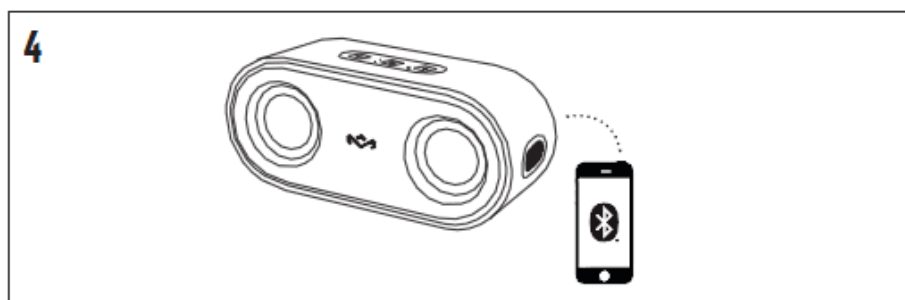


- A. AUX In
- B. USB-C Charging Port
- C. Power
- D. EQ Mode
- E. LED Indication
- F. Volume Down / Skip Backward
- G. Multi-Function Button
- H. Volume Up / Skip Forward

BLUETOOTH®

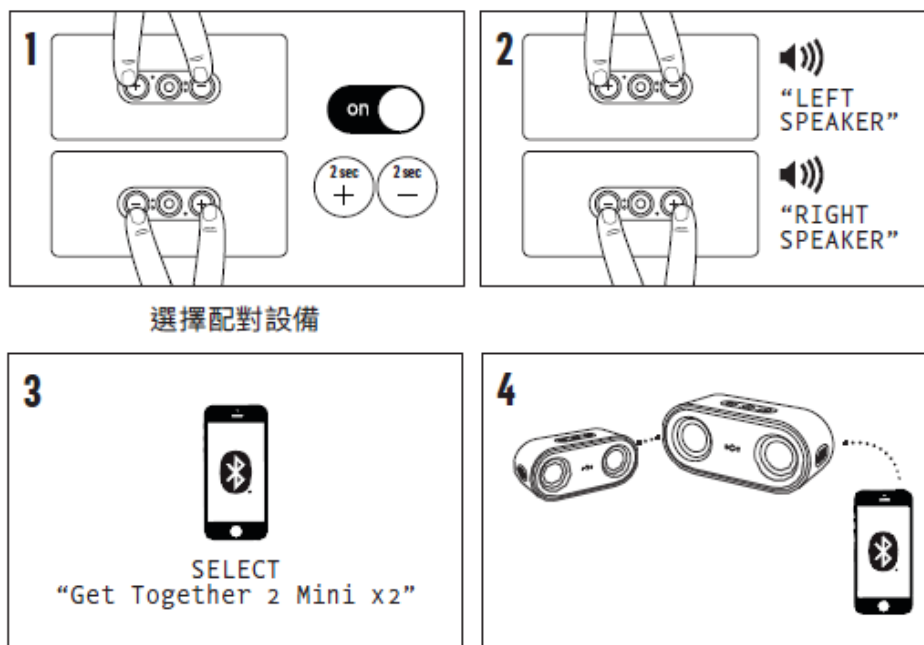


選擇配對設備

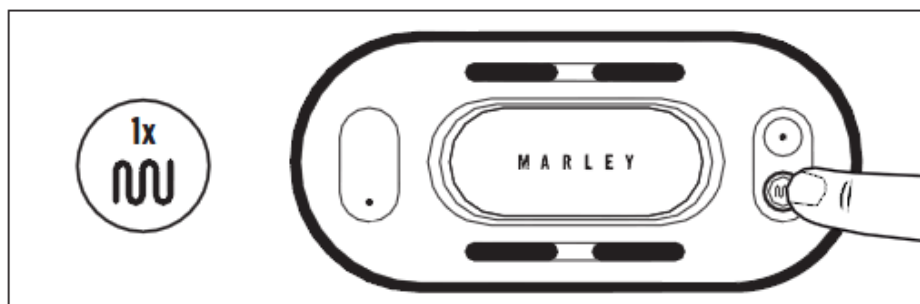


Quick Start Guide

MULTIPAIR MODE



EQ MODE



STATUS

配對模式

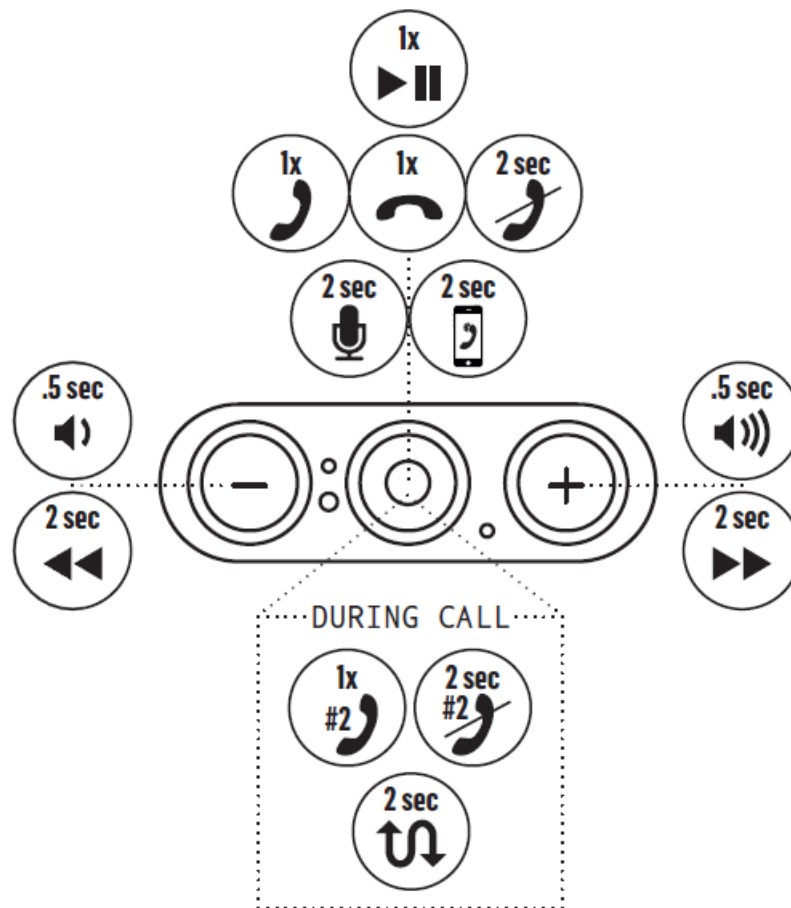
- EQ Mode - Bass Boost
配對模式
- EQ Mode - Pop
配對成功
- EQ Mode - Classic
Aux配對模式

LED INDICATION

LED指示燈

- On
藍燈常亮
- On
藍燈常亮
- On
紅燈常亮

CONTROLS



Full instruction and warranty details can be found at
<https://www.thehouseofmarley.com/customer-support/instruction-books>

COMPLIANCE INFO

GET TOGETHER 2 MINI

READ ALL INSTRUCTIONS BEFORE USE AND SAVE THESE INSTRUCTIONS FOR FUTURE REFERENCE.

This equipment has been tested and found to comply with the limits for a Class B digital device, pursuant to part 15 of the FCC Rules. These limits are designed to provide reasonable protection against harmful interference in a residential installation. This equipment generates, uses, and can radiate radio frequency energy and, if not installed and used in accordance with the instructions, may cause harmful interference to radio communications. However, there is no guarantee that interference will not occur in a particular installation. If this equipment does cause harmful interference to radio or television reception, which can be determined by turning the equipment off and on, the user is encouraged to try to correct the interference by one or more of the following measures:

- Reorient or relocate the receiving antenna.
- Increase the separation between the equipment and receiver.
- Connect the equipment into an outlet on a circuit different from that to which the receiver is connected.
- Consult the dealer or an experienced radio/TV technician for help.

This device complies with FCC radiation exposure limits set forth for an uncontrolled environment. This device complies with Part 15 of the FCC Rules. Operation is subject to the following two conditions: (1) this device may not cause harmful interference, and (2) this device must accept any interference received, including interference that may cause undesired operation.

FCC RF EXPOSURE STATEMENT:

This transmitter must not be co-located or operating in conjunction with any other antenna or transmitter. This device complies with FCC radiation exposure limits set forth for an uncontrolled environment.

CAUTION!

Any changes or modifications not expressly approved by the party responsible for compliance could void the user's authority to operate the equipment. **ISED STATEMENT**

This device complies with Innovation, Science, and Economic Development Canada license-exempt RSS standard(s). Operation is subject to the following two conditions: (1) this device may not cause interference, and (2) this device must accept any interference, including interference that may cause undesired operation of the device.

This Class B digital apparatus complies with Canadian ICES-003.

ISED RF EXPOSURE STATEMENT:

The device is compliant with RF exposure guidelines, users can obtain Canadian information on RF exposure and compliance.

LE PRÉSENT APPAREIL EST CONFORME

Après examen de ce matériel aux conformités ou aux limites d'intensité de champ RF, les utilisateurs peuvent sur l'exposition aux radiofréquences et la conformité and compliance d'acquiescer. les informations correspondantes.

BATTERY REPLACEMENT STATEMENT IN EUROPE

Your Get Together 2 Mini includes a rechargeable battery designed to last the lifetime of the product. In the unlikely event that you should require a replacement battery, please contact Consumer Relations who will supply details of the warranty and out-of-warranty replacement battery service.

BATTERY DIRECTIVE

This symbol indicates that batteries must not be disposed of in domestic waste as they contain substances that can be damaging to the environment and health. Please dispose of batteries in designated collection points.

WE EXPLANATION

This marking indicates that this product should not be disposed of with other household wastes throughout the EU. To prevent possible harm to the environment or human health from uncontrolled waste disposal, recycle it responsibly to promote the sustainable reuse of material resources.

Hereby, FKA Brands Ltd, declares that this radio equipment is in compliance with the essential requirements and other relevant provisions of Directive 2014/53/EU. A copy of the Declaration of Conformity can be obtained from www.thehouseofmarley.co.uk/declaration-of-conformity

To prevent possible hearing damage, do not listen to high volume levels for long periods. Full instruction and warranty details can be found at <http://www.thehouseofmarley.com/instructionbooks>.

Con el fin de evitar lesiones auditivas, se aconseja no escuchar a un volumen excesivamente alto durante un periodo prolongado.

Para ver los detalles completos y las excepciones, consulte

<http://www.thehouseofmarley.com/instructionbooks>

Marley and the Marley logo are registered trademarks of Fifty-Six Hope Road Music Limited and the use of such marks by House of Marley is under license. The Bluetooth® word mark and logos are registered trademarks owned by Bluetooth® SIG, Inc. and any use of such marks by The House of Marley is under license.

Operating frequency bands: 2402 – 2480MHz CE BT Max Power Transmitted Power: LEFT: EM-JA019L =

2.98dBm DISTRIBUTED BY: House of Marley, LLC 3000 N Pontiac Trail Commerce Township, MI 48390 USA

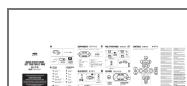
Distributed in Europe by FKA Brands Ltd., Somerhill Business Park, Five Oak Green Rd, Tonbridge, Kent TN11 0GP, UK



EMJA021



Documents / Resources



[MARLEY EM-JA021 Get Together 2 Mini Bluetooth Speaker](#) [pdf] User Guide
EMJA021, PVB-EMJA021, PVBEMJA021, EM-JA021 Get Together 2 Mini Bluetooth Speaker,
Get Together 2 Mini Bluetooth Speaker, 2 Mini Bluetooth Speaker, Bluetooth Speaker, Speaker