



## Maretron IPG100 Internet Protocol Gateway User Guide

[Home](#) » [Maretron](#) » Maretron IPG100 Internet Protocol Gateway User Guide 

Maretron IPG100 Internet Protocol Gateway User Guide



---

### Real Time Cloud Service New User Setup Guide

#### General Information

Thank you for your interest in Maretron's Real Time Cloud Services!

Maretron Real Time Cloud Service allows you to remotely and seamlessly connect to your vessel's NMEA 2000 ® network using [N2KView ®](#) and [N2KView ® -Mobile](#) software, so you can monitor & control your vessel from anywhere in the world.

#### Required Components

- IPG100 – Network Gateway
- Internet Connection (Provided by user)
- Windows PC (7 or newer) for setup

#### PC Downloads

- [N2KAnalyzer](#)
- [N2KView](#)

#### Mobile Downloads (Apple / Android)

## Procedure

1. Create a new account by visiting <https://rtcs.maretron.com/signUp.php>.

- a. First Name
- b. Last Name
- c. Email Address
- d. User Name

This will be the name of your vessel / connection that will be used for N2KView & N2KView Mobile login

- i. **All lowercase**
- ii. **Numbers are acceptable**
- iii. **Supported special characters @ ! / . – \_ (space), but not as the 1st character**

e. Key No.

- i. IPG100 w/no N2KView License Key      = IPG100 Serial Number      **162xxxx**



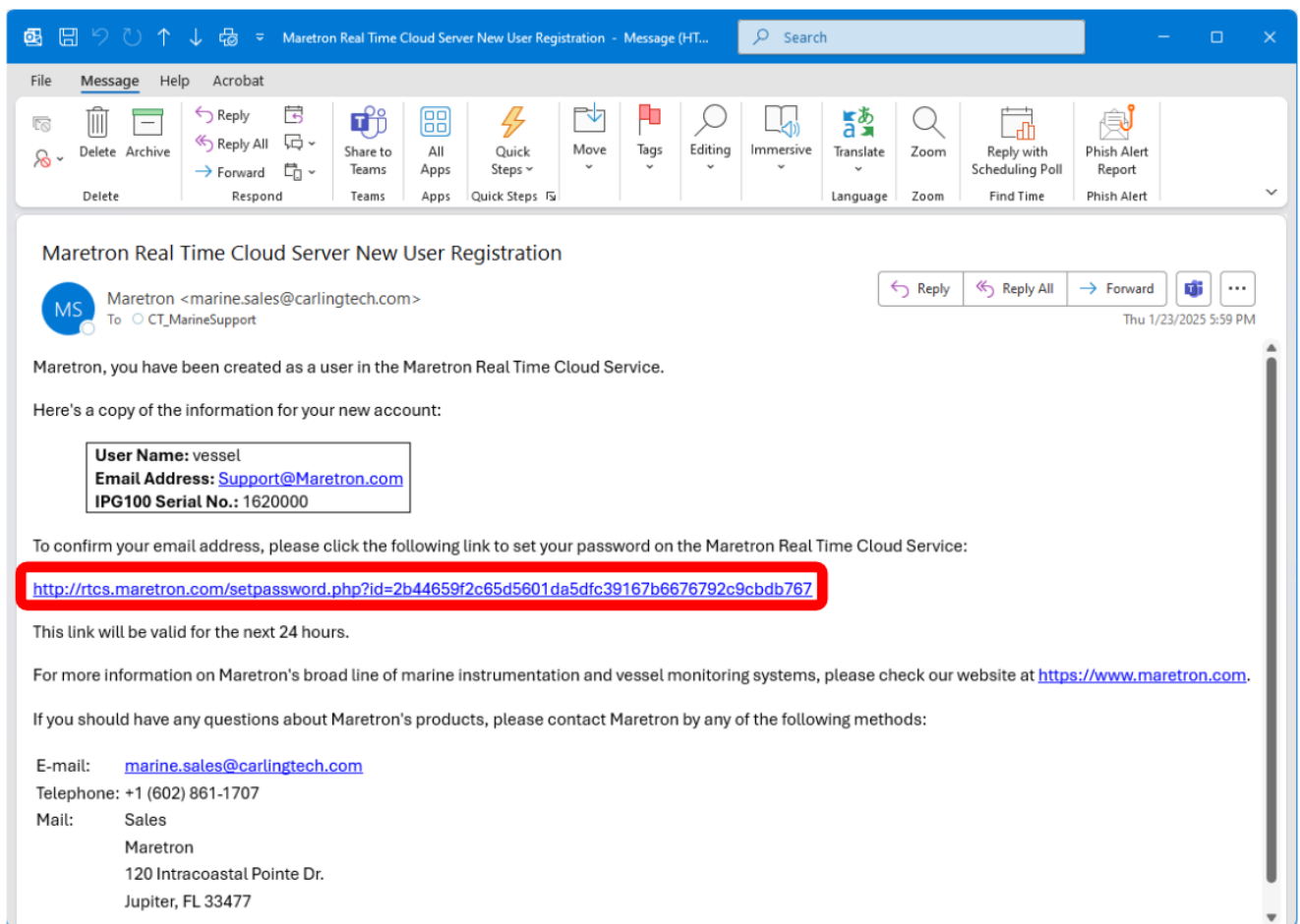
- ii. IPG100 w/ N2KView License Key      = N2KView Key Number      **xxxx**



2. Agree to End User's License Agreement by scrolling to the bottom, checking the box and pressing Continue.

3. A confirmation email of the account setup will be sent to the email address provided.

Select the link within the email to complete the account setup by setting your account management password.



4. This will launch your internet browser to confirm your account setup and to set your password.

Press **Continue** when complete.

The image shows a screenshot of the "Maretron Real Time Cloud Service" website. The header is "Maretron Real Time Cloud Service". Below the header are three buttons: "All Users", "Create User", and "Logout". The main heading is "Set Password". Below this heading are three input fields: "Email Address" with the value "Support@Maretron.com", "New Password" with a masked password, and "Confirm Password" with a masked password. At the bottom of the form is a "Continue" button.

5. Press **Login** to return back to the main Login page of RTCS account management.

# MARETRON Real Time Cloud Service

Your account has been created, and the password set.

To activate the account, please login and select the data plan that best suites your purpose.

If you have any questions, we'd love to help. Please contact us by email at [marine.support@carlingtech.com](mailto:marine.support@carlingtech.com) or by phone at +1 (602) 861-1707.

Login

6. Using your account **User Name** and **Password**, please log into your account.

## Maretron Real Time Cloud Service

Sign Up

### Log In

User Name:  [Forgot User Name](#)  
Password:  [Reset Password](#)

Log In

7. Select the type of Subscription service desired
- 3-Month (90 Day) Trial
  - 1 Year

## Maretron Real Time Cloud Service

Home

Edit

Reset Password

Logout

### User vessel:

First Name: Maretron  
Last Name: Support  
Email Address: Support@Maretron.com  
User Name: vessel  
Key : 1620000  
No of Failed Logins: 0  
Last login at: 2025-01-27 20:27:55 UTC

Buy 1 Year Subscription

Due to the coronavirus pandemic, Maretron has extended the Free Trial period to 3 months, so that your boat can be monitored remotely, without the need to physically travel.

Sign up for Free **3-Month** Trial

8. Your RTCS profile setup is complete!

# Maretron Real Time Cloud Service

[Home](#)
[Edit](#)
[Reset Password](#)
[Logout](#)

User vessel:

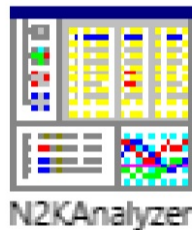
First Name: Maretron  
 Last Name: Support  
 Email Address: Support@Maretron.com  
 User Name: vessel  
 Key : 1620000  
 Start Date: 2025-01-27  
 Expiry Date: 2025-04-28  
 Usage: 0 GBytes / 25 GBytes since 2025-01-27\*  
 No of Failed Logins: 0  
 Last login at: 2025-01-27 20:27:55 UTC  
 Data Last Received at: 0000-00-00 00:00:00 UTC

*\*The usage measurement is measured at the Real Time Cloud Service and may not correspond with that measured by your service provider.*

9. The next step is to enable the Cloud Services on your IPG100 gateway.

\*This requires you to be onboard the vessel, connecting with a Windows PC to the vessel's network.

10. Launch N2KAnalyzer on your PC.



11. Connect to your IPG100 network gateway.

This will populate a list of all NMEA 2000 ® connected devices.

Device ID	Device Name	Manufacturer	Part Number	Serial Number	Device Address	Device Type	Device Status	Device Power	Device Voltage	Device Current	Device Temperature	Device Humidity	Device Pressure	Device Location	Device Notes
1	IPG100	Maretron	1620108	107107	107107	IPG100	Online	12.0V	10.71V	1.07A	107.107	107.107	107.107	107.107	107.107

12. Locate and select your IPG100 on your NMEA 2000® network, should be listed in Blue text.

Maretron N2KAnalyzer V3, Version 3.4.0.10														
File Setup Analyze Update Configure Web Help														
Expand	Node Address	Manufacturer	Mfg Model ID	Mfg Model Version	Mfg Serial Number	Source	Device Instance	Data Instance	Label	Current Software	Available Software	Installation Description #1	Installation Description #2	Bandwidth
														5.4%
	48	Maretron	DCR100	2.0	1701758		0	0		1.1.2.3	1.2.3.1			0.3%
	49	Maretron	DCR100	2.0	1701468		3	3	lights	1.2.2.2	1.2.3.1			0.3%
	11	Maretron	DSM570	2.0	1940011		4	4		1.9.1.2	1.9.2.1			0.0%
	23	Maretron	GPS200	3.0	1581637		0	0	GPS	4.0.2.12	4.0.2.12			3.0%
	29	Maretron	IPG100	1.0	1620000		0	0	Network Gateway	4.2.0.1	4.2.0.1			0.1%
	25	Carling Techn...	MConnect	1.0	1980062		2	2	MConnect	1.1.3.202...	-			0.0%
	D0	Maretron	RIM100	2.0	1440935		0	7		1.2.2.2	1.2.2.2			0.0%
	D1	Maretron	SIM100	1.0	1421620		6	6	Cpt SR Light Sw	1.2.2.2	1.2.2.2			0.0%
	72	Maretron	TLA100	2.0	1264004	Fuel	7	0	Fuel Tank	2.1.2.2	2.1.2.2			0.0%
	28	Maretron	VDR100	1.0	1761063		0	0		3.0.7.1	3.0.7.1			0.0%
	80	Maretron	WSO200	1.0	1740454		0		Weather Instrument	1.1.2.1	1.1.2.1			1.0%

13. Right-click on IPG100 and select **Configure Device**.

Maretron N2KAnalyzer V3, Version 3.4.0.10 - Ron's Home Network 24-11-05														
File Setup Analyze Update Configure Web Help														
Expand	Node Address	Manufacturer	Mfg Model ID	Mfg Model Version	Mfg Serial Number	Source	Device Instance	Data Instance	Label	Current Software	Available Software	Installation Description #1	Installation Description #2	Bandwidth
														5.4%
	48	Maretron	DCR100	2.0	1701758		0	0		1.1.2.3	1.2.3.1			0.3%
	49	Maretron	DCR100	2.0	1701468		3	3	lights	1.2.2.2	1.2.3.1			0.3%
	11	Maretron	DSM570	2.0	1940011		4	4		1.9.1.2	1.9.2.1			0.0%
	23	Maretron	GPS200	3.0	1581637		0	0	GPS	4.0.2.12	4.0.2.12			3.0%
	29	Maretron	IPG100	1.0	1620000		0	0	Network Gateway	4.2.0.1	4.2.0.1			0.1%
	25	Carling Techn...	MConnect	1.0	1980062		2	2	MConnect	1.1.3.202...	-			0.0%
	D0	Maretron	RIM100	2.0	1440935		0	7		1.2.2.2	1.2.2.2			0.0%
	D1	Maretron	SIM100	1.0	1421620		6	6	Cpt SR Light Sw	1.2.2.2	1.2.2.2			0.0%
	72	Maretron	TLA100	2.0	1264004	Fuel	7	0	Fuel Tank	2.1.2.2	2.1.2.2			0.0%
	28	Maretron	VDR100	1.0	1761063		0	0		3.0.7.1	3.0.7.1			0.0%
	80	Maretron	WSO200	1.0	1740454		0		Weather Instrument	1.1.2.1	1.1.2.1			1.0%

14. Under the General tab, locate the section labeled Maretron Cloud Services, set the status to **Enable**.

IPG100 (0x29) 1621171 - Configuration Dialog

General

N2KServer Information

Advanced

Installation Description

Label

(Max. 32 Characters)

Maretron Network

IP Configuration Settings

DHCP : Yes

IP Address : 10 . 71 . 1 . 218

Subnet Mask : 255 . 255 . 0 . 0

Default Gateway : 10 . 71 . 1 . 15

Default DNS : 0 . 0 . 0 . 0

N2K Server Password

Maretron Cloud Services

Disable

Disable

Enable

Load Config From File...

Save Config To File...

Restore Factory Defaults

Get Config From Device

Put Config To Device

Close

RED text indicates a changed parameter that has not yet been put to the device

15. Press **Put Config to Device**.



IPG100 (0x29) 1621171 - Configuration Dialog

General | N2KServer Information | Advanced | Installation Description

Label  
(Max. 32 Characters)  
Maretron Network

IP Configuration Settings

DHCP : Yes

IP Address : 10 . 71 . 1 . 218

Subnet Mask : 255 . 255 . 0 . 0

Default Gateway : 10 . 71 . 1 . 15

Default DNS : 0 . 0 . 0 . 0

N2K Server Password

Maretron Cloud Services  
Enable

Load Config From File... Save Config To File... Restore Factory Defaults

Get Config From Device Put Config To Device Close

RED text indicates a changed parameter that has not yet been put to the device

16. Close the Window to confirm the settings have been applied by pressing **OK**.

IPG100 (0x29) 1621171 - Configuration Dialog

General | N2KServer Information | Advanced | Installation Description

Label  
(Max. 32 Characters)  
Maretron Network

IP Configuration Settings

DHCP : Yes

IP Address : 10 . 71 . 1 . 218

Subnet Mask : 255 . 255 . 0 . 0

Default Gateway : 10 . 71 . 1 . 15

Default DNS : 10 . 71 . 1 . 9

N2K Server Password

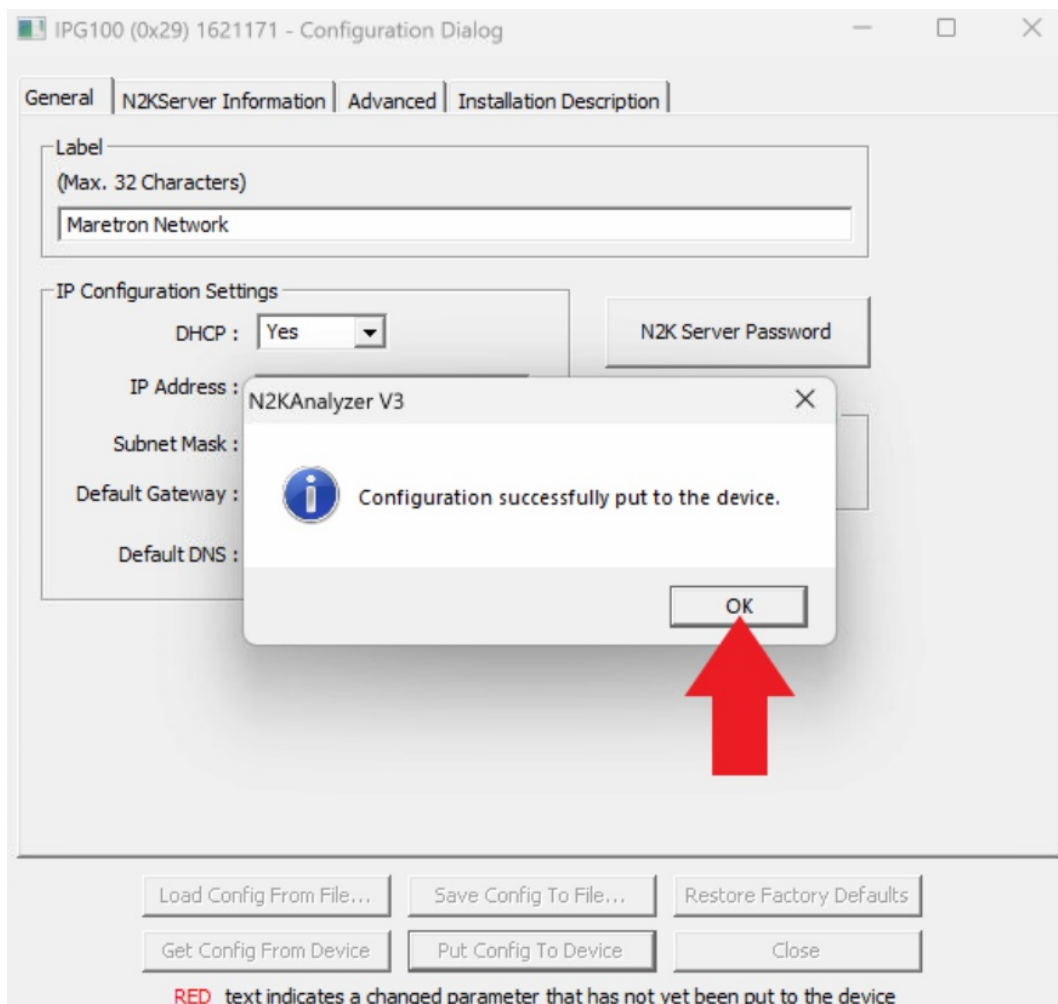
Maretron Cloud Services  
Enable

Load Config From File... Save Config To File... Restore Factory Defaults

Get Config From Device Put Config To Device Close

RED text indicates a changed parameter that has not yet been put to the device

17. **Close** the Configuration Dialog box.



18. Your cloud connection setup is complete!

Please verify your internet connection and validate the account using your PC or Mobile Device to run N2KView.

#### **\*\* NOTES \*\***

N2KView Mobile (Android or Apple), connecting via local LAN or Cloud, the user will need to obtain a configuration file from the IPG100.

Please refer to the following guides for additional support:

- Uploading and managing stored N2KView Configurations on the IPG100 via PC, MBB or TSM.
  - o <https://www.maretron.com/wp-content/phpkbv95/article.php?id=704>
- Downloading an N2KView Configuration from IPG100 to Mobile Device (Android / Apple)
  - o <https://www.maretron.com/wp-content/phpkbv95/article.php?id=655>

For installation support, please contact:


**Maretron**  
120 Intracoastal Pointe Dr.  
Jupiter, FL 33477 USA  
Toll Free: +1 [866-550-9100](tel:866-550-9100)  
Phone: +1 [602-861-1707](tel:602-861-1707)  
[support@maretron.com](mailto:support@maretron.com)  
[www.maretron.com](http://www.maretron.com)



## Contents

### [1 Documents / Resources](#) [1.1 References](#)

## Documents / Resources

	<p><a href="#">Maretron IPG100 Internet Protocol Gateway</a> [pdf] User Guide</p> <p>IPG100 Internet Protocol Gateway, IPG100, Internet Protocol Gateway, Protocol Gateway, Gateway</p>
---	---

## References

- [🌐 Maretron Real Time Cloud Service](#)
- [M How do I load a custom configuration to N2KView Mobile?](#)
- [M How do I upload a config to an IPG100 for mobile devices and real time cloud?](#)
- [User Manual](#)

[Manuals+](#), [Privacy Policy](#)

This website is an independent publication and is neither affiliated with nor endorsed by any of the trademark owners. The "Bluetooth®" word mark and logos are registered trademarks owned by Bluetooth SIG, Inc. The "Wi-Fi®" word mark and logos are registered trademarks owned by the Wi-Fi Alliance. Any use of these marks on this website does not imply any affiliation with or endorsement.