

Marchred 150ML Cordless Essential Oil Diffuser



Marchred 150ML Cordless Essential Oil Diffuser User Guide

[Home](#) » [Marchred](#) » Marchred 150ML Cordless Essential Oil Diffuser User Guide 

Contents

- [1 Marched 150ML Cordless Essential Oil Diffuser](#)
- [2 Product Usage Instructions](#)
- [3 Usage steps](#)
- [4 Charging Guide](#)
- [5 Clean & Maintenance](#)
- [6 Troubleshooting](#)
- [7 Documents / Resources](#)
 - [7.1 References](#)

Marched

Marched 150ML Cordless Essential Oil Diffuser



Specifications

- **Dimensions:** Approx. (W) 9.9cm * (H) 13.5cm
- **Weight:** Approx. 0.84 lbs
- **Power cord length:** 59 inches
- **Adapter Voltage:** 5V2A
- **Working Mode:** Long-time / 10s intermittent mode/night light mode
- **Tank Capacity:** 150ML
- **LED Colors:** Multiple colors
- **Materials:** High-quality materials
- **Accessories:** Charger and cable
- **Working Frequency:** Standard frequency
- **Battery Capacity:** Rechargeable battery

Product Usage Instructions

1. Charging:

Charge the diffuser for the first time using the provided 5V2A charger and cable. A full charge takes approximately 8 hours. The indicator light will be red during charging and turn green when fully charged.

1. Usage Steps:

1. Add water up to the maximum water line in the tank.
2. Add 2 drops of water-soluble essential oil.
3. Press the power button to start the diffuser.
 - Press once for continuous mist mode.
 - Press again for 10-second intermittent mist mode.
 - Press a third time to activate the night light mode.
 - Press a fourth time to turn off the diffuser.
 - Long press to turn off the light individually.

2. Clean & Maintenance:

Empty and clean the diffuser before storage and before each use. Refer to the user manual for detailed cleaning instructions.

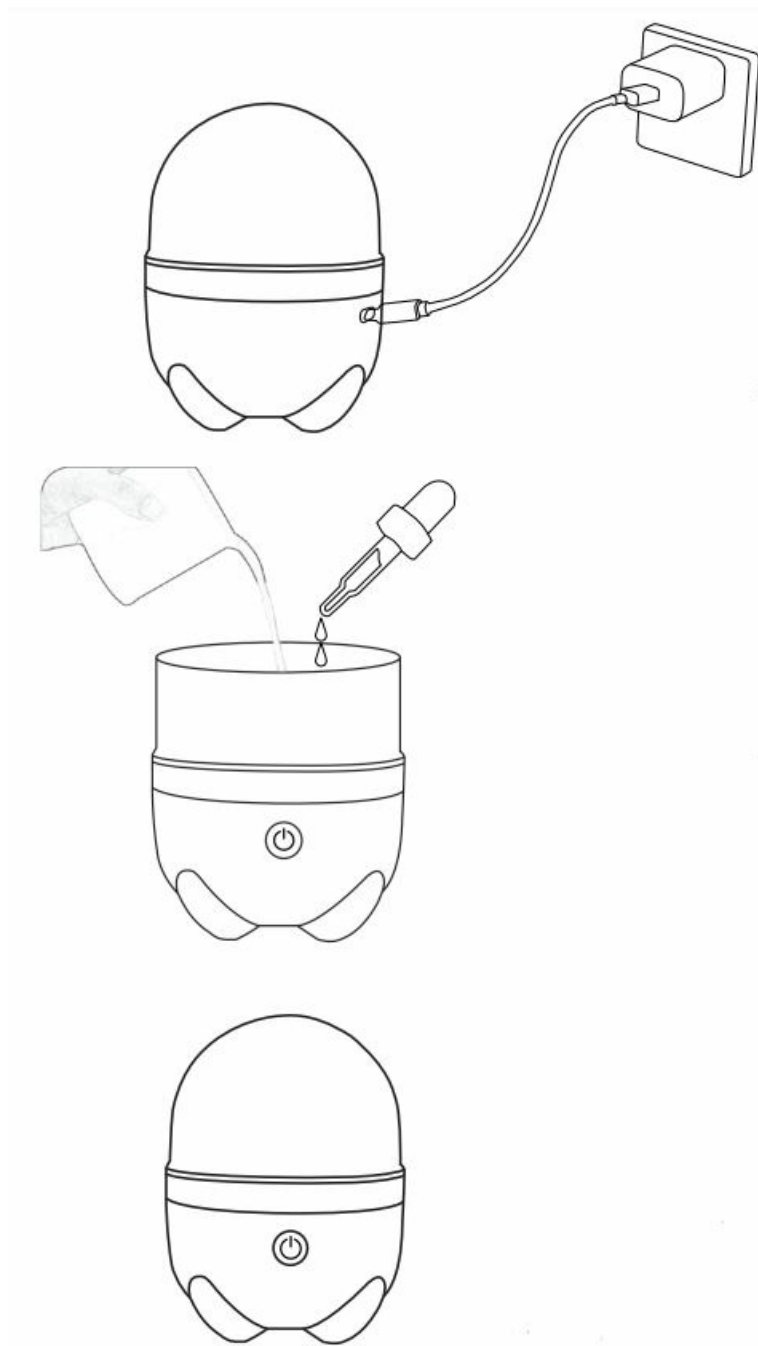
FAQ

- **Q: My diffuser is not producing mist or is producing abnormal mist, what should I do?**
 - **A:** If the diffuser is not producing mist correctly, ensure that you have added enough water and essential oil. If leakage occurs, drain the diffuser, let it dry for 24 hours, and try again. If issues persist, contact customer support.
- **Q: How often should I clean the diffuser?**
 - **A:** It is recommended to clean the diffuser every 3 days to prevent the growth of microorganisms and ensure optimal performance.

IMPORTANT NOTE:

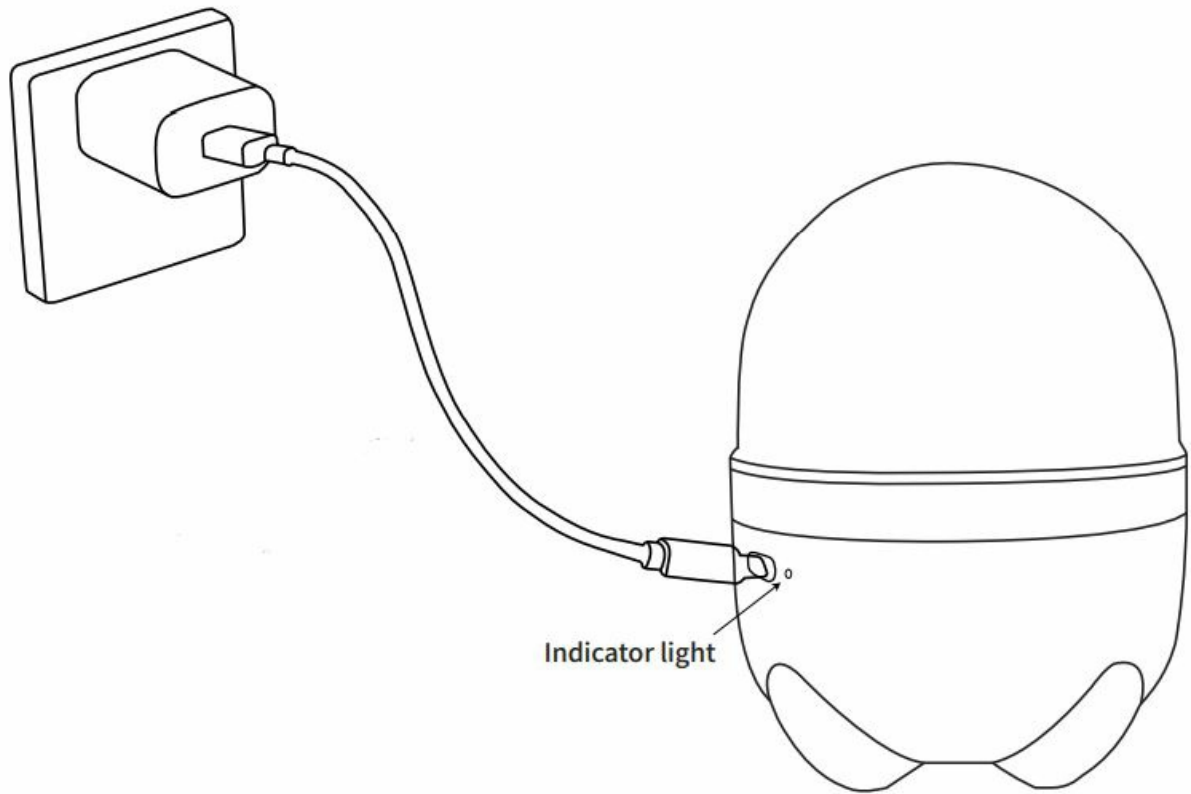
When you receive the goods and use them for the first time they need to be charged, please use the 5V2A charger and cable supplied to charge them.

Usage steps



- Charge it for the first time, after charging, you can work unplugged and cordless.
- Firstly, add some water and then 2 drops of water-soluble essential oil.
- Press the power button to start the product.
- Click again to enter the 10-second intermittent mode. Press the button for the third time to turn off the fog and enter the night light mode.
- Press the button for the fourth time to stop the product.
- Long press to turn off the light individually.

Charging Guide



- A full charge takes approximately 8 hours.
 - The full charge indicator is green
 - The indicator light is red when charging
1. Please charge the product in time with the adapter and power cord provided. During the charging process, the red light of the product will remain on until it turns green, indicating that the charging process is complete.
 2. When the product stops working and the indicator light turns red three times, or turns red three times after pressing the power button, it means that the power is exhausted and needs to be recharged in order to continue working.
 3. The product needs to be charged when it arrives to work properly. When fully charged, it can work continuously for 6-7 hours, and can work for 12 hours with 10-sec intervals.

Clean & Maintenance

Please clean the diffuser every 3 days as follows.

1. Unplug the USB power cord of the diffuser and the adapter plug. Pour out the remaining water in the tank. (As shown in figure 1)
2. Add warm water for cleaning, may add 2-3 drops of vinegar, leave the diffuser for 5minutes, shake gently and pour out the water. Use a soft cloth or cotton swab to gently wipe the atomizing hole (small circle in the center of the tank) and the tank. (As shown in Figure 2)
3. There will still be a little water in the water tank after the waterless auto shut-off. If the diffuser will not be used for a long time, please pour it out to keep it clean and dry.
4. Be careful not to clean the plastic body with organic solvents as this may cause damage to the product's shell printing and body.

Notice

- When adding water, do not exceed the 150ML maximum water level line marked on the tank.
- Please switch off the power of the diffuser before refilling water.
- Please use pure natural water-soluble essential oils to avoid essential oils floating on the water's surface.
- When uncovering and refilling and cleaning, please be careful not to drop water onto this vent.

air outlet



Figure 1

Ultrasonic Nebuliser

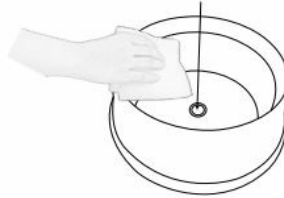


Figure 2

Max Water Line

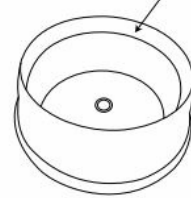


Figure 3

Troubleshooting

Please refer to the table below in the event of the product operating abnormally

Will not switch on/off:

No mist or abnormal mist:

- Please check if the product is charged, the red indicator light means it needs to be charged.
- Please make sure that the water volume does not exceed the maximum water level of 150ML.
- Please make sure you are using water-soluble essential oils to avoid the oil floating on the water surface and blocking the fog.
- Add too much essential oil, 150ML please add 2 drops of essential oil can be.
- Wipe the diffuser and tank centre atomisation holes with a dry soft cloth or cotton swab.

If the diffuser leaks for any reason, pour out the remaining water. Gently shake the diffuser to drain the interior, then leave dry for 24 hours or more.

PLEASE NOTE

- That high humidity may promote the growth of biological organisms in the environment. Please use this product in a dry, room-temperature environment. If it is not used for a long time, please store it in a dry and cool place and recharge it in time.

- Do not let the area around the humidifier become wet. If moisture occurs, lower the output of the oil diffuser. If the output of the oil diffuser can not be reduced, use the oil diffuser intermittently.
- Do not let absorbent materials, such as carpets, curtains, curtains, or tablecloths, become wet.
- Never leave water in the reservoir when the appliance is not in use.
- Empty and clean the oil diffuser before storage. Clean the oil diffuser before the next use.

Warning: When the water in the diffuser tank is not replaced in a timely manner, or the tank is not properly cleaned, microorganisms may grow in the water tank and be blown into the air during diffuser operation, resulting in health risks. It is recommended that the diffuser be cleaned every 3 days.


Specifications

Dimensions	Approx(W)9.9* (H) 13.5cm
Weight	Approx. 0.84 lbs
Power cord length	59in
Adapter Voltage	5V2A
Working Mode	Long-time / 10s intermittent mode /night light mode
Tank Capacity	150ml
LED Colors	7 colors
Materials	PP+ABS
Accessories	USB cable*1 + Adapter*1
Working Frequency	2.4M Hz
Battery capacity	6000Mah

Package Includes

- Diffuser*1
- USB cable*1
- 5V2A chargers*1
- User Guide*1

Documents / Resources

<div><div>Quick Start Guide</div><div>150ML Cordless Essential Oil Diffuser</div><div></div><div><div>IMPORTANT NOTE:</div><div>When you receive the device and use them for the first time they need to be charged. Please use the USB charger and cable supplied to charge them.</div></div></div>	<div><div>Marchred 150ML Cordless Essential Oil Diffuser [pdf] User Guide</div><div>150ML Cordless Essential Oil Diffuser, 150ML, Cordless Essential Oil Diffuser, Essential Oil Diffuser, Oil Diffuser, Diffuser</div></div>
---	---

References

- [User Manual](#)

[Manuals+.](#) [Privacy Policy](#)

This website is an independent publication and is neither affiliated with nor endorsed by any of the trademark owners. The "Bluetooth®" word mark and logos are registered trademarks owned by Bluetooth SIG, Inc. The "Wi-Fi®" word mark and logos are registered trademarks owned by the Wi-Fi Alliance. Any use of these marks on this website does not imply any affiliation with or endorsement.