



MANTIS INSTA360 PRO Button Connection Verification User Guide

[Home](#) » [Mantis](#) » MANTIS INSTA360 PRO Button Connection Verification User Guide 





This document will guide you through checking that the buttons are properly connected. Please read these instructions carefully before using this product, and save this manual for future use. For questions, email info@mantis-sub.com or visit <https://www.mantis-sub.com/>. Please note that the actual controls and components, menu items, etc. of your camera and software may look somewhat different from those shown in the illustrations in this document.

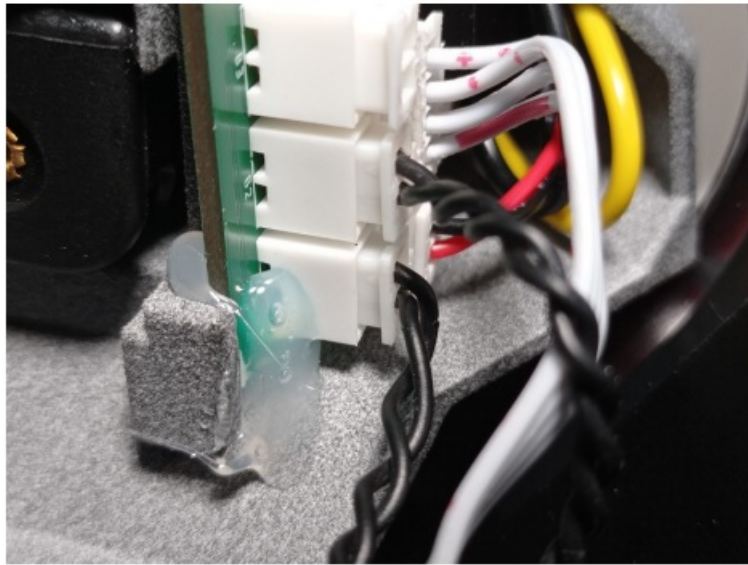
1. Locate the tray mounting screw on the inside of the housing and unscrew it using a 4mm hex key.



2. Remove the screw so it can't fall into one of the domes, then lift the tray and place it on the inside of the housing. This will expose the 4-pin XH-type LED connector and two 2-pin XH-type button connectors.



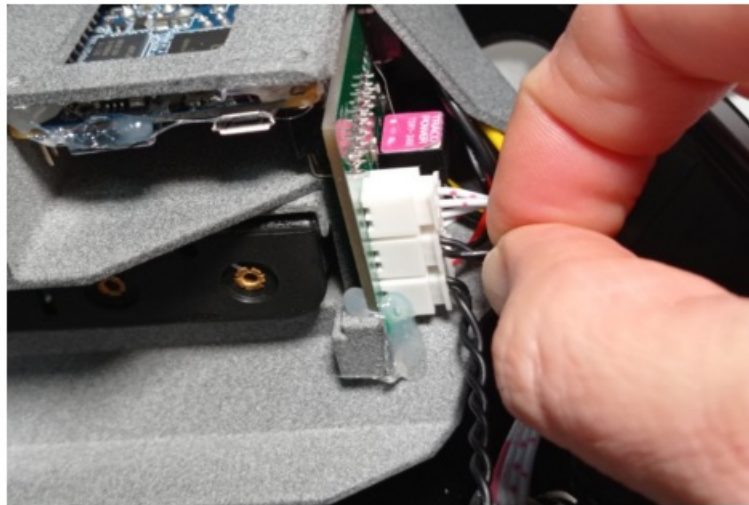
3. Confirm that all three XH connectors are seated properly and that no individual leads are exposed.



4. This picture shows the connector for button #2 with one of the pins showing. This connector is faulty. The pin must be re-inserted fully for the button to work correctly.



5. To fix the faulty connector, remove it from the socket and push the pin fully into the connector housing. Then re-seat the connector.



6. Replace the tray and verify that the sides of the tray are flush with the housing, then tighten the tray mounting screw.



7. Please perform a vacuum test before use.

Contents

- [1 Documents / Resources](#)
 - [1.1 References](#)
 - [2 Related Posts](#)

Documents / Resources

