



# MANSNIX AC701 Smart Bridge User Guide

[Home](#) » [MANSNIX](#) » MANSNIX AC701 Smart Bridge User Guide 

## Contents

- 1 MANSNIX AC701 Smart Bridge
- 2 Function
- 3 Parameter
- 4 Control Scheme
- 5 Before Using
- 6 Match the wifi bridge
- 7 Match the Smart Blinds
- 8 Control Interface
- 9 Connect Google Assistant
- 10 Connect Alexa
- 11 FCC
- 12 Find your city
- 13 Set cycle
- 14 Set group control on TUYA app
- 15 Set group control on TUYA app
- 16 DIY scene on TUYA app – weather
- 17 DIY scene on TUYA app – weather
- 18 DIY scene on TUYA app – change of home location
- 19 DIY scene on TUYA app – timing
- 20 DIY scene on TUYA app – timing
- 21 DIY scene on graffiti app – when device status changes
- 22 Documents / Resources
  - 22.1 References
- 23 Related Posts

# MANSNIX

**MANSNIX AC701 Smart Bridge**



## Function



Max. 30 motors



Max. 50 scenes



Max. 20 Rooms



Max. 30 timers

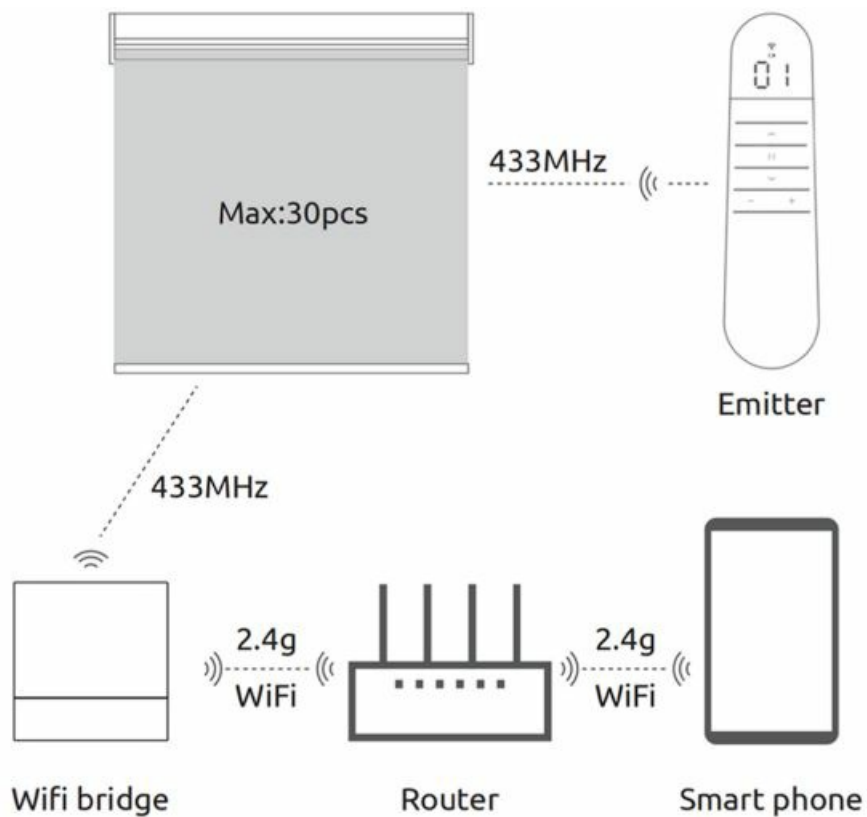
## Parameter

- **input Voltage**  
5V
- **Wireless Frequency**  
433Mhz
- **WI-FI**  
2.4GHz
- **Net Weight**  
About 20g
- **Working Temperature**  
0C~40 C
- **Product Size**  
51.5×10.0×50.0mm
- **Standby Power Consumption**  
≤0.5W
- **Infrared Frequency**  
38K
- **Relative Humidity**  
≤85% RH (no condensation)

- **Infrared Communication Distance**

≤8m (Changes due to usage environment)

## Control Scheme



## Before Using

Download the Tuya App by following the link in QR Code.  
You must register and login into app on your desired smartphone.



or



Make sure your smart phone WiFi and Bluetooth is turned on.  
Make sure to connect to a 2.4 G WiFi connection.



2.4G WiFi

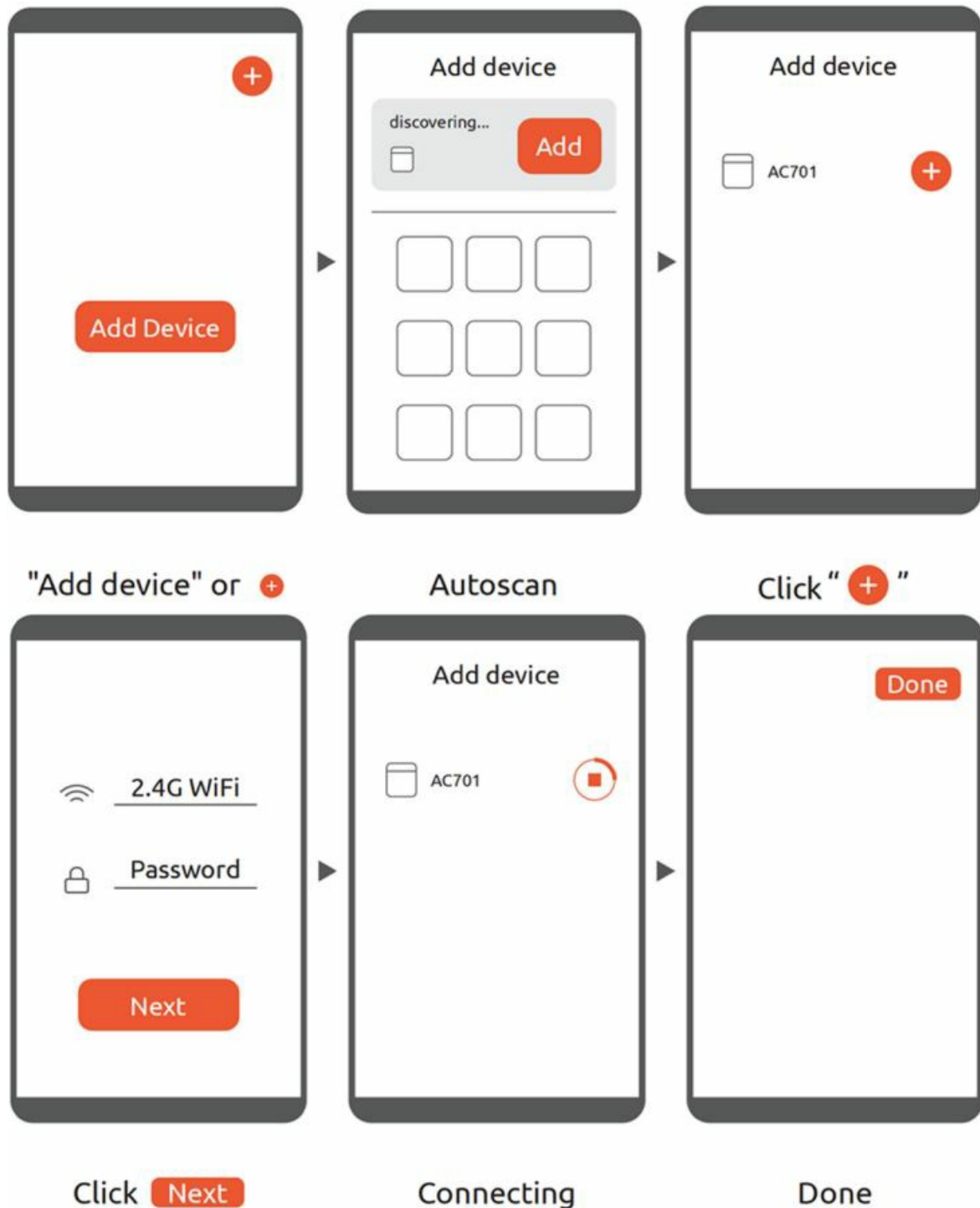


Bluetooth

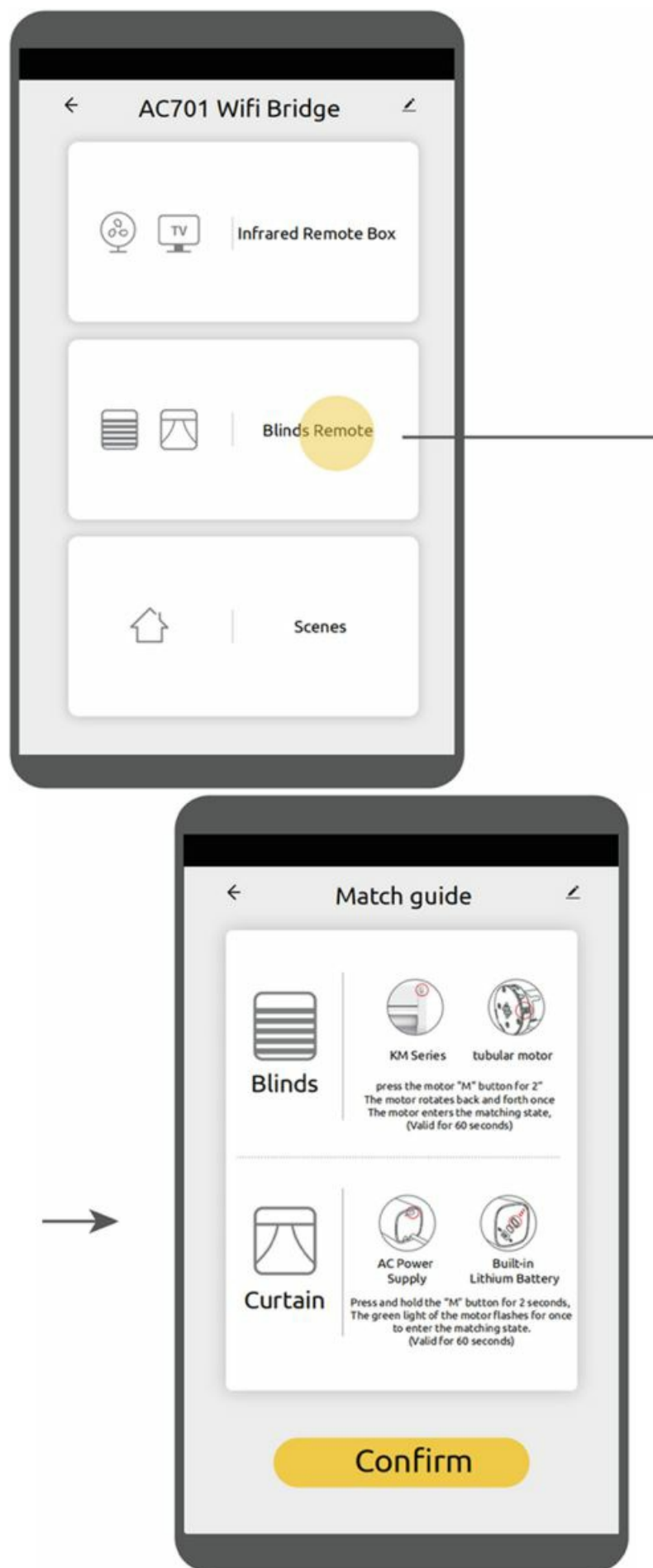
## Match the wifi bridge



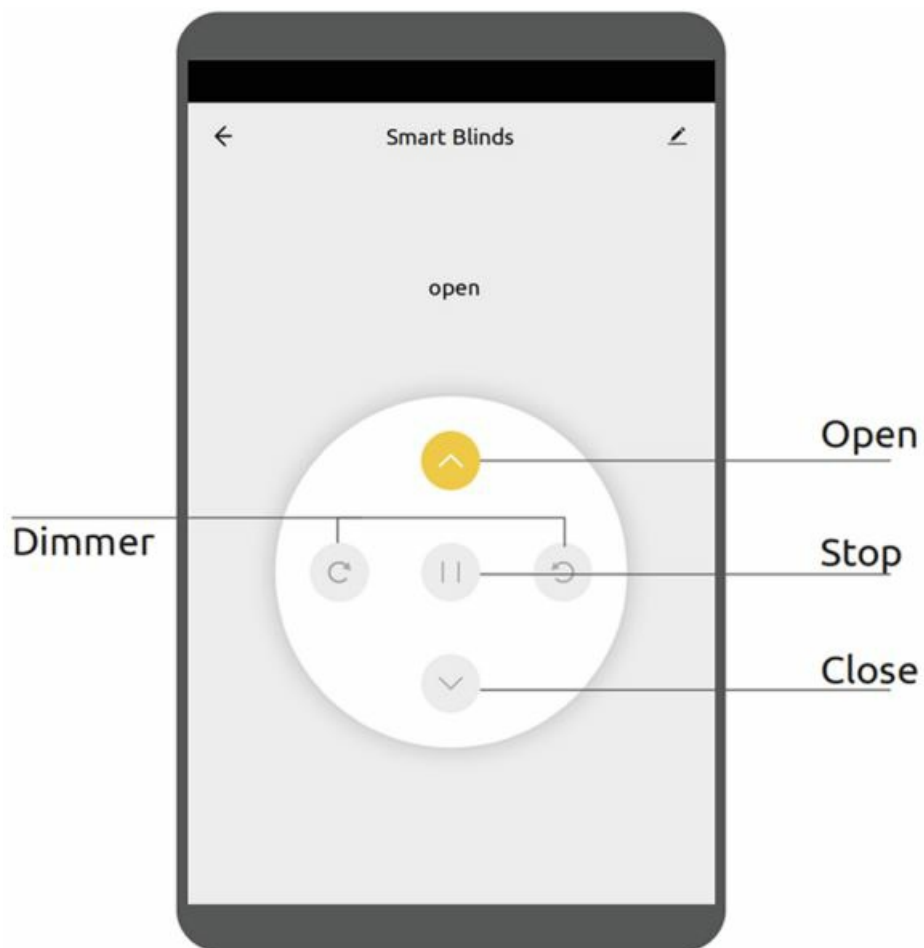
1. Long press Reset key on wifi bridge at least 5 seconds until the indicator light flashes|



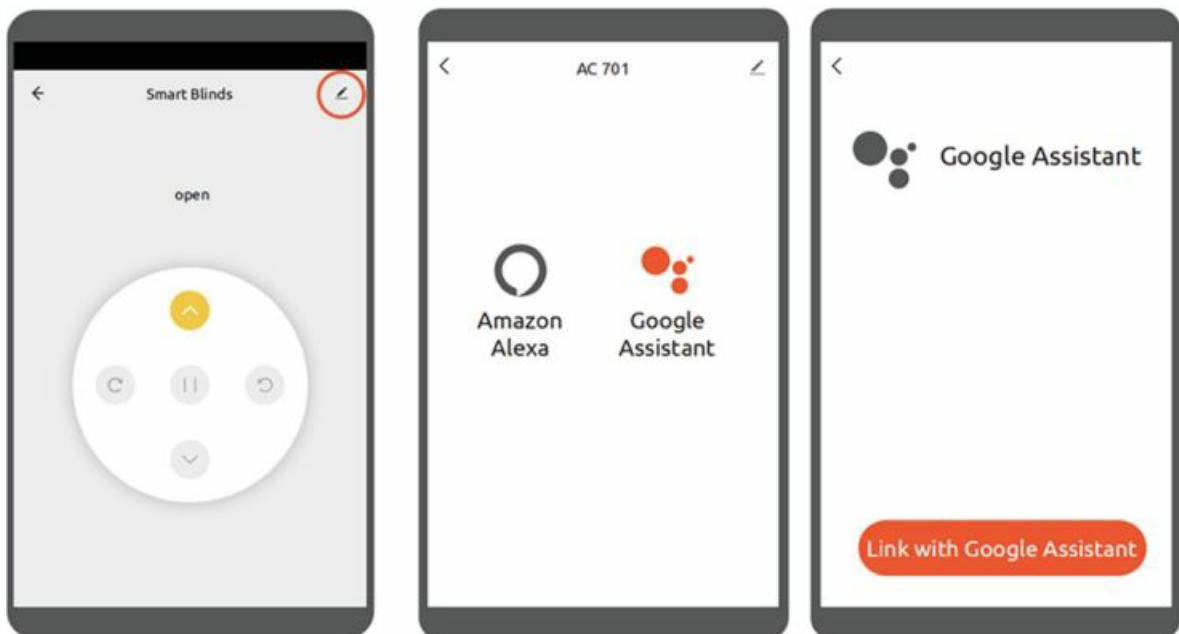
**Match the Smart Blinds**



Control Interface

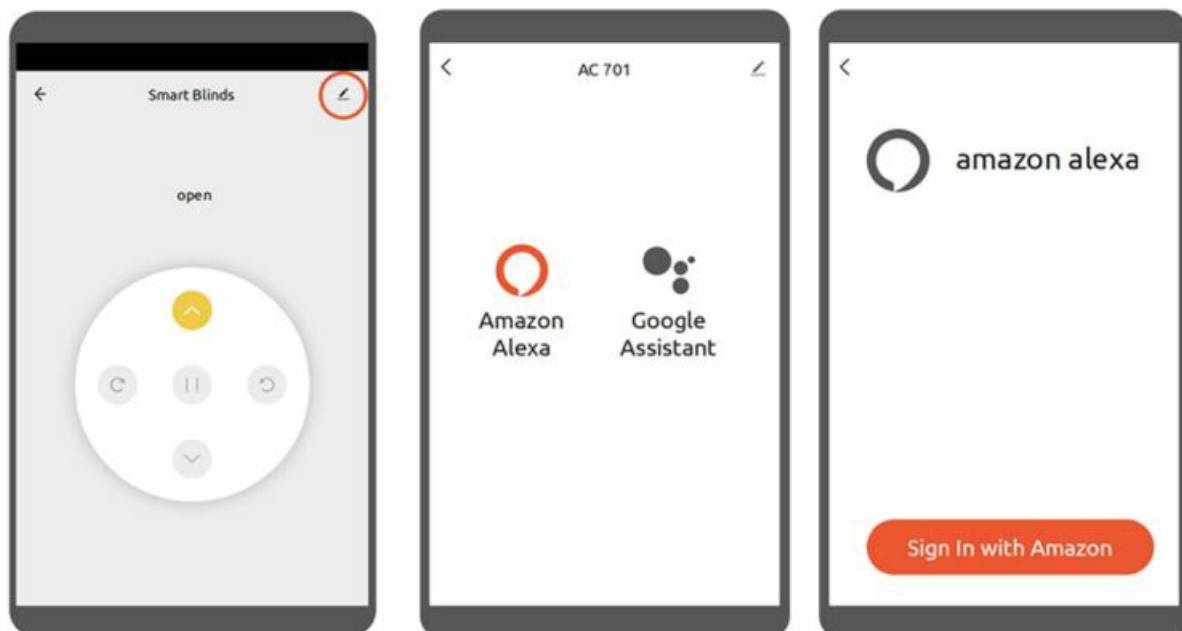


## Connect Google Assistant



Click Link with Google Assistant  
 (Multiple devices only need to bind account once)  
 "OK Google, open <device name>"  
 "OK Google, close <device name>"

## Connect Alexa



Click Sign In with Amazon  
(Multiple devices only need to bind account once)  
"Alexa, open <device name>"  
"Alexa, close <device name>"

## FCC

### FCC Caution:

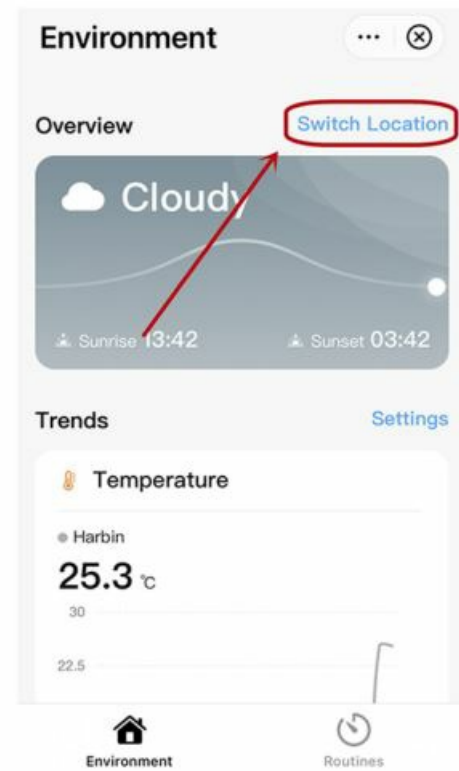
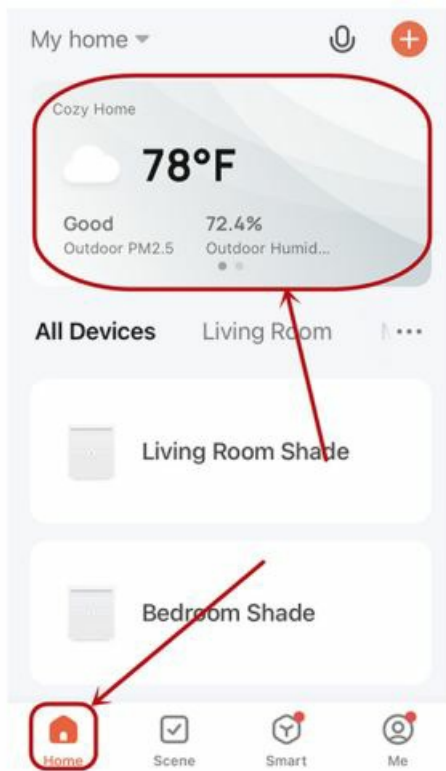
This device complies with part 15 of the FCC Rules. Operation is subject to the following two conditions: (1) This device may not cause harmful interference, and (2) this device must accept any interference received, including interference that may cause undesired operation. Any Changes or modifications not expressly approved by the party responsible for compliance could void the user's authority to operate the equipment.

**Note:** This equipment has been tested and found to comply with the limits for a Class B digital device, pursuant to part 15 of the FCC Rules. These limits are designed to provide reasonable protection against harmful interference in a residential installation. This equipment generates uses and can radiate radio frequency energy and, if not installed and used in accordance with the instructions, may cause harmful interference to radio communications. However, there is no guarantee that interference will not occur in a particular installation. If this equipment does cause harmful interference to radio or television reception, which can be determined by turning the equipment off and on, the user is encouraged to try to correct the interference by one or more of the following measures:

- Reorient or relocate the receiving antenna.
- Increase the separation between the equipment and receiver.
- Connect the equipment into an outlet on a circuit different from that to which the receiver is connected.
- Consult the dealer or an experienced radio/TV technician for help.

The device has been evaluated to meet general RF exposure requirement. The device can be used in portable exposure condition without restriction.

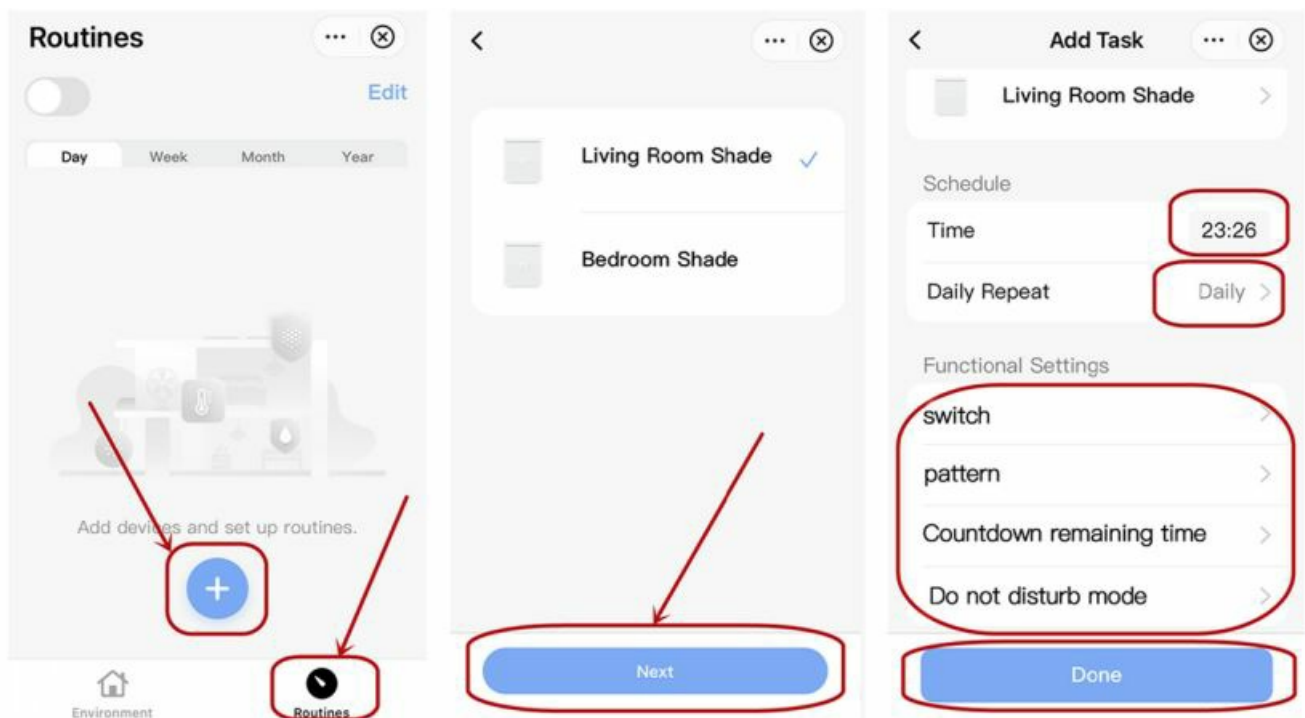
## Find your city



Click “Switch Location”,select city.  
Find your city on the home page and start mobile positioning

Click “Switch Location”, select city.  
Find your city on the home page and start mobile positioning

## Set cycle

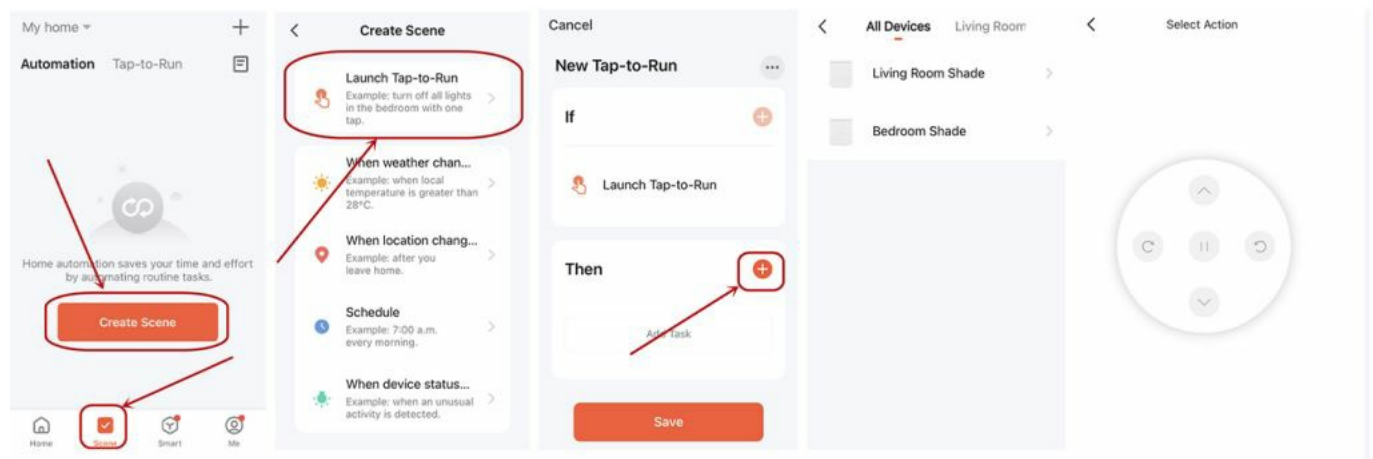


Click “Routines”, and then click “+” add device settings cycle event.  
Set events, repetition frequency, and function settings

Click “Routines”, and then click “+” add device settings cycle event.  
Set events, repetition frequency, and function settings



## Set group control on TUYA app



Back to the homepage and click “Soene”, and then click “Create Scene”.

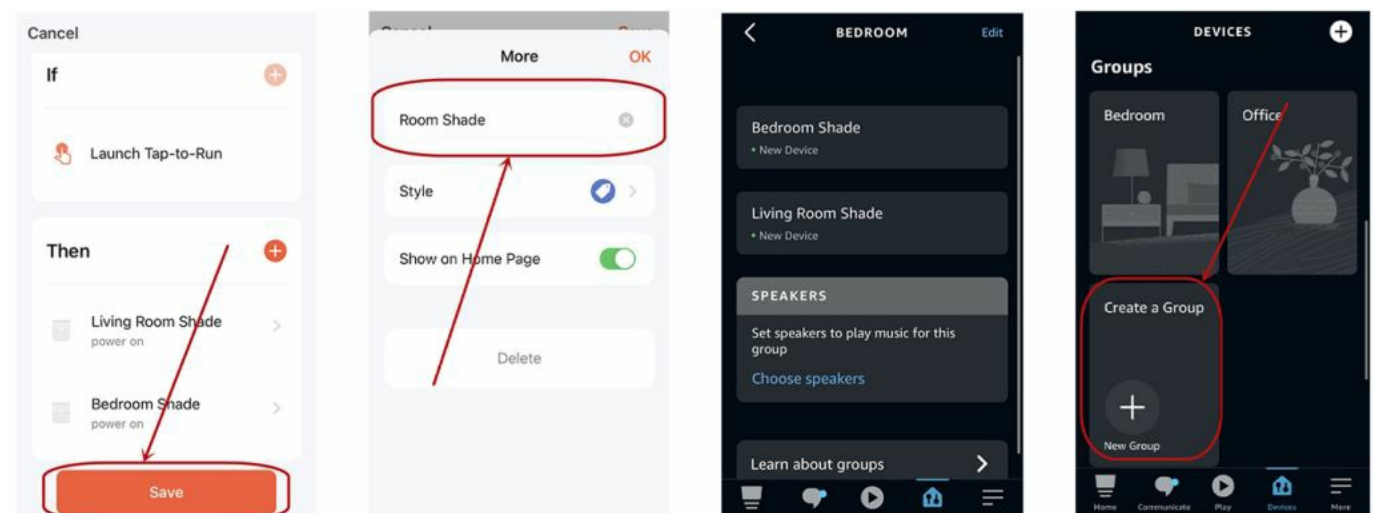
Click “Launch Tap-to-Run”.

Click “+”, then you can add more devices.

Select the device you want to set up.

Click the action you want to perform, for example if you want to open the shade you should click “n”.

## Set group control on TUYA app



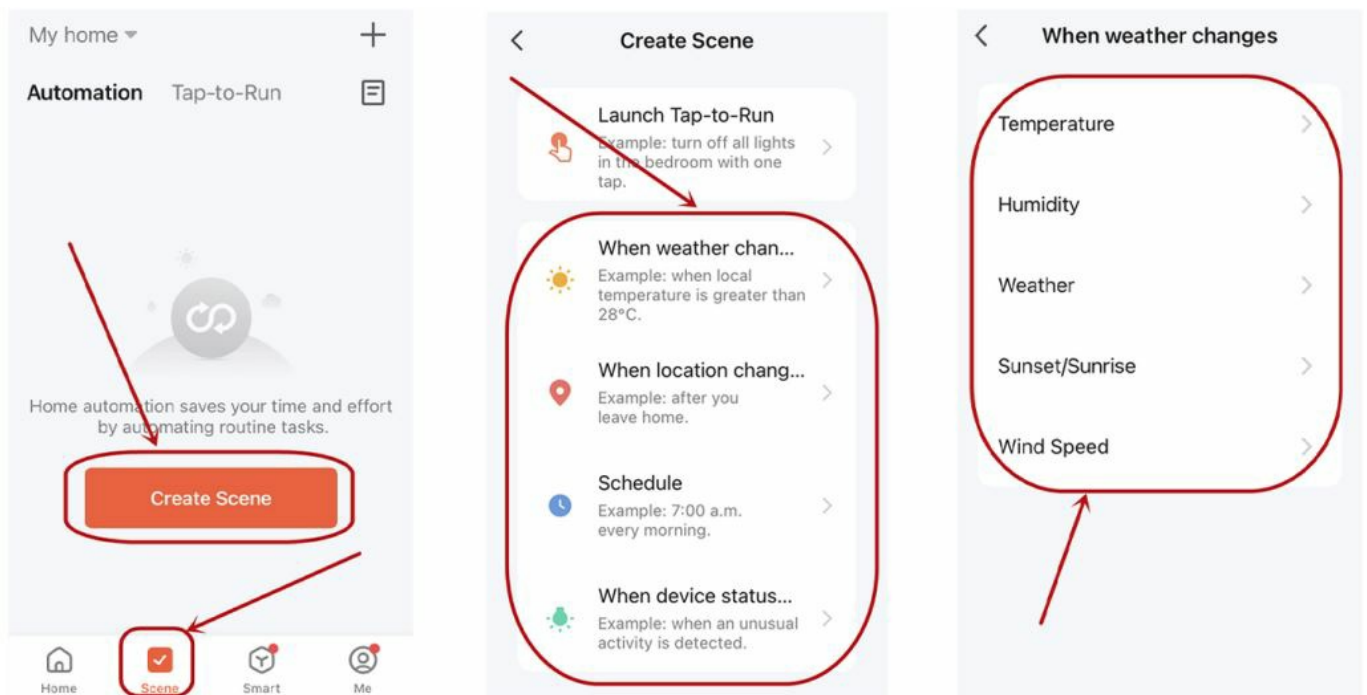
Finish your setting, click “Save”.

You can change the name for this setting.

Voice commands are “turn on”, “tum off”.

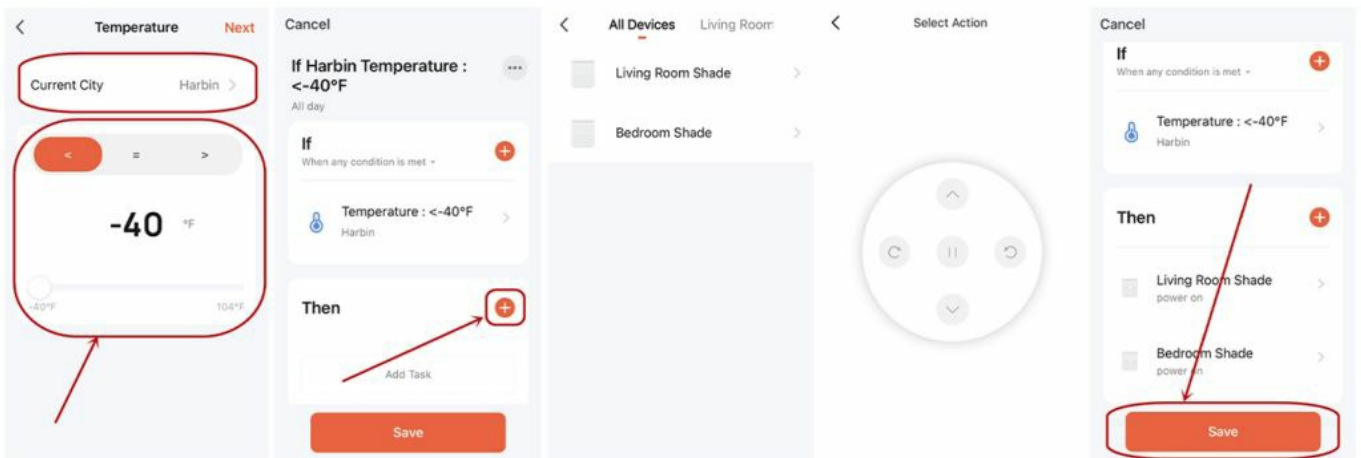
Notice: Group control can also be set in Alexa. Just create “Group”, and the voice commands are “open” and “close”.

## DIY scene on TUYA app – weather



Back to “Scene”, click “Create Scene”  
 You can choose “When weather change”. “When location change”, “Schedule”.  
 “When device status change”, here we click “when weather change”.

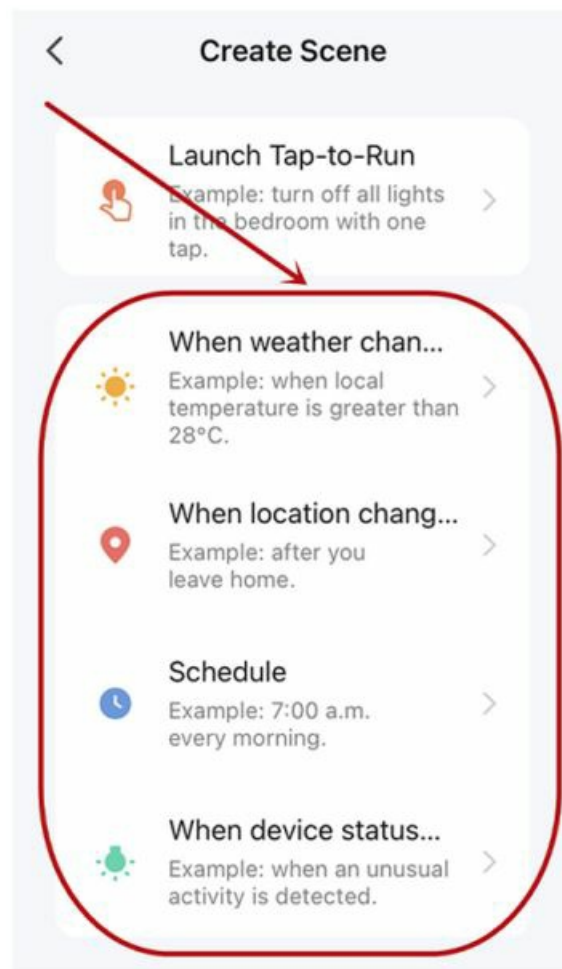
### DIY scene on TUYA app – weather



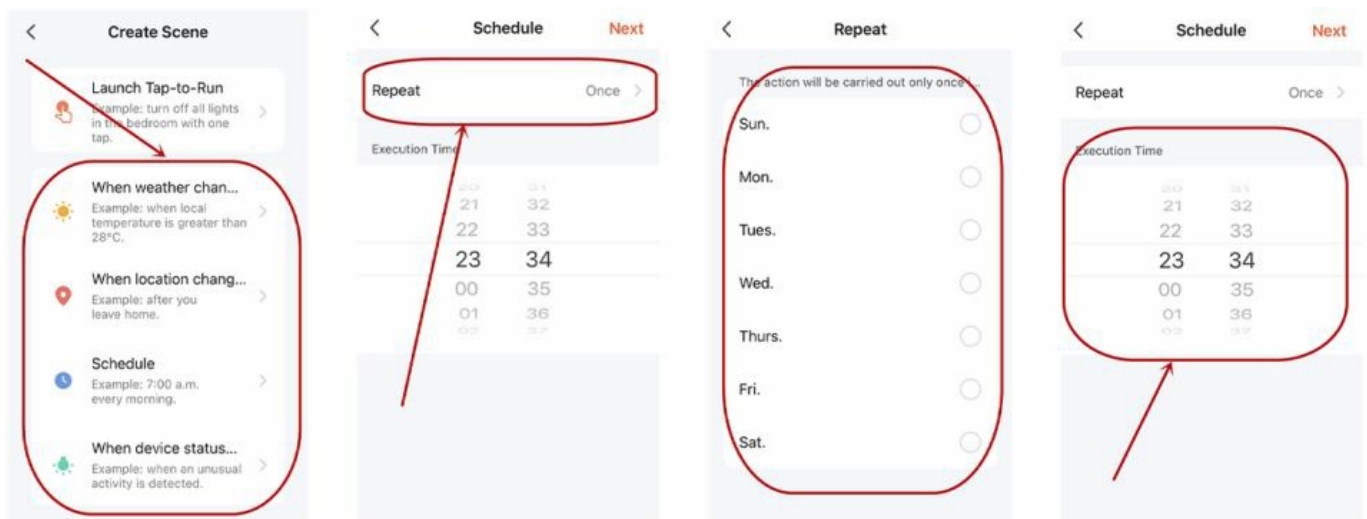
If you choose to control the curtain according to the temperature change, for example choose “Temperature”, then confirm the current city, and set the degrees Fahrenheit greater than, equal to and less than, click “Next” after finished, click “+”, you can add more devices, select the shade you want to control, and then click the control button, click “save” after completing all settings.

### DIY scene on TUYA app – change of home location

Position change Setting, click “When Location change”, the mobile phone is required to always open the location for the “Tuya” app, mobile phones consume more power. Then locate the location and range of the home, and change the state of the shade when going out and going home.



## DIY scene on TUYA app – timing

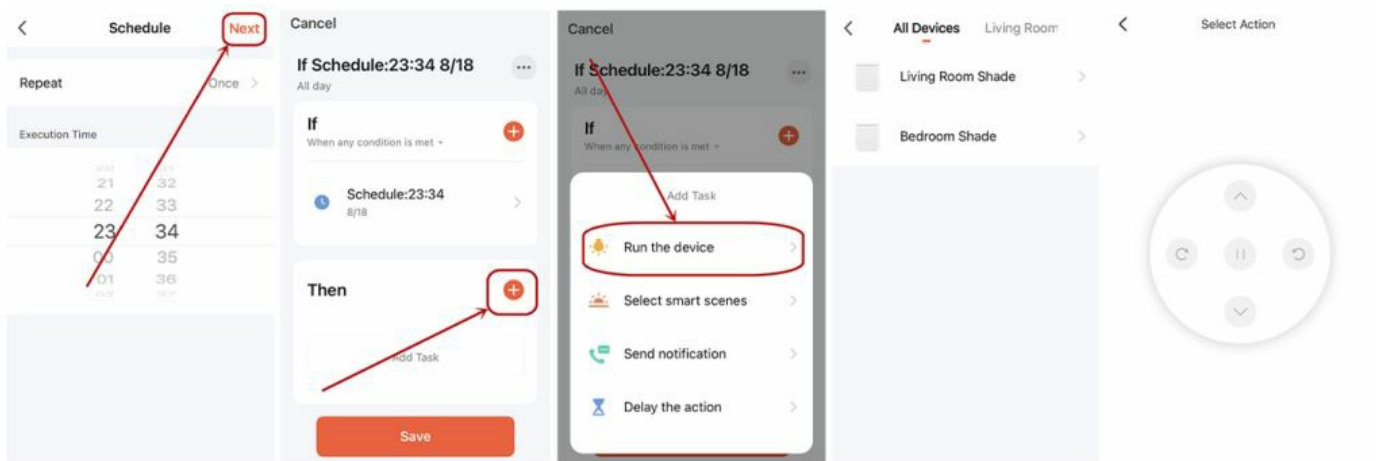


Click "Schedule" to enter the setting interface.

First set the frequency and select "Repeat"

elect the number of days you want to repeat execution like setting an alarm clock if not, it will only be executed once by default, and return after completion.

## DIY scene on TUYA app – timing



After setting, click “Next”

Click “+” to set the tasks to be executed. Multiple tasks can be added

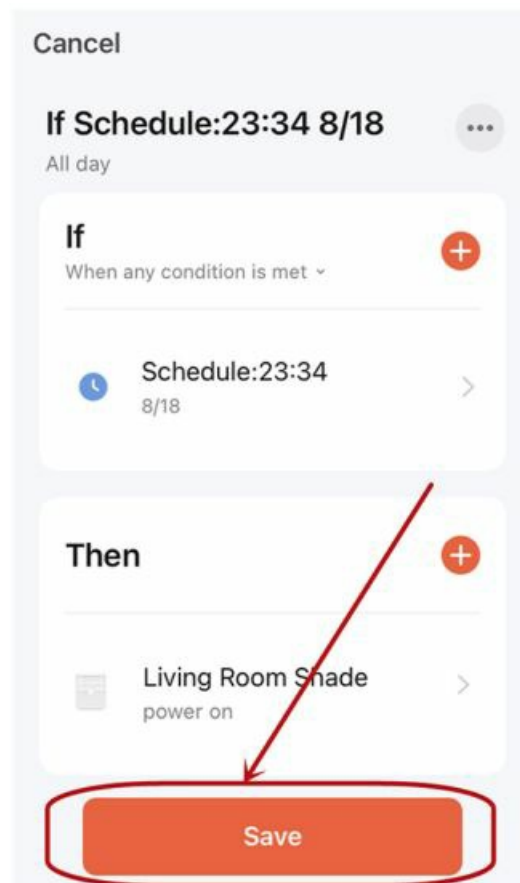
Click “Run the device”

Select the shade you want to use. Next, select the button you want to use

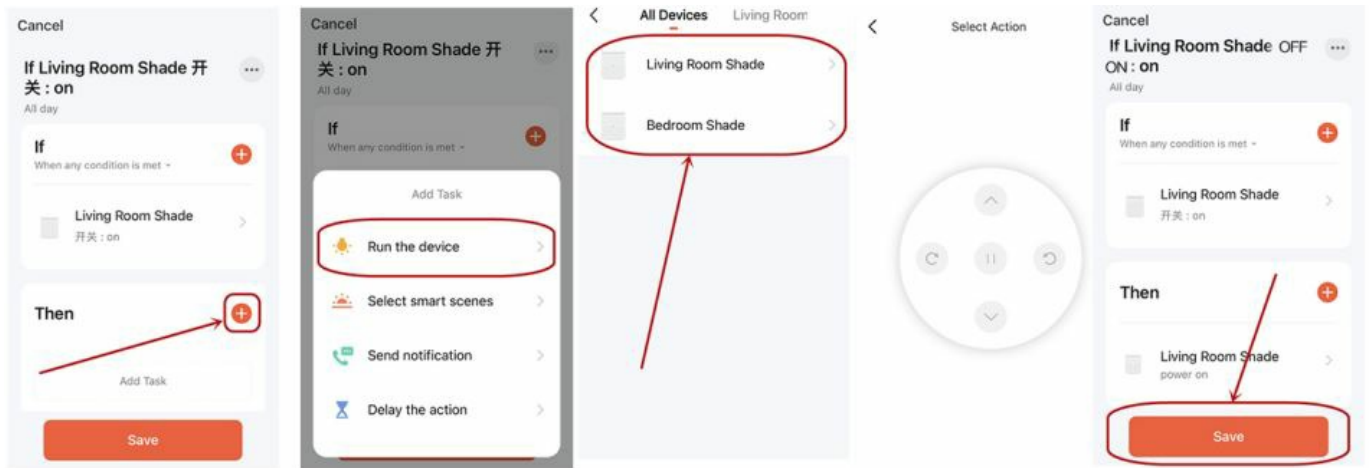
## DIY scene on TUYA app – timing

After setting,

click “Save” to complete the timing



## DIY scene on graffiti app – when device status changes

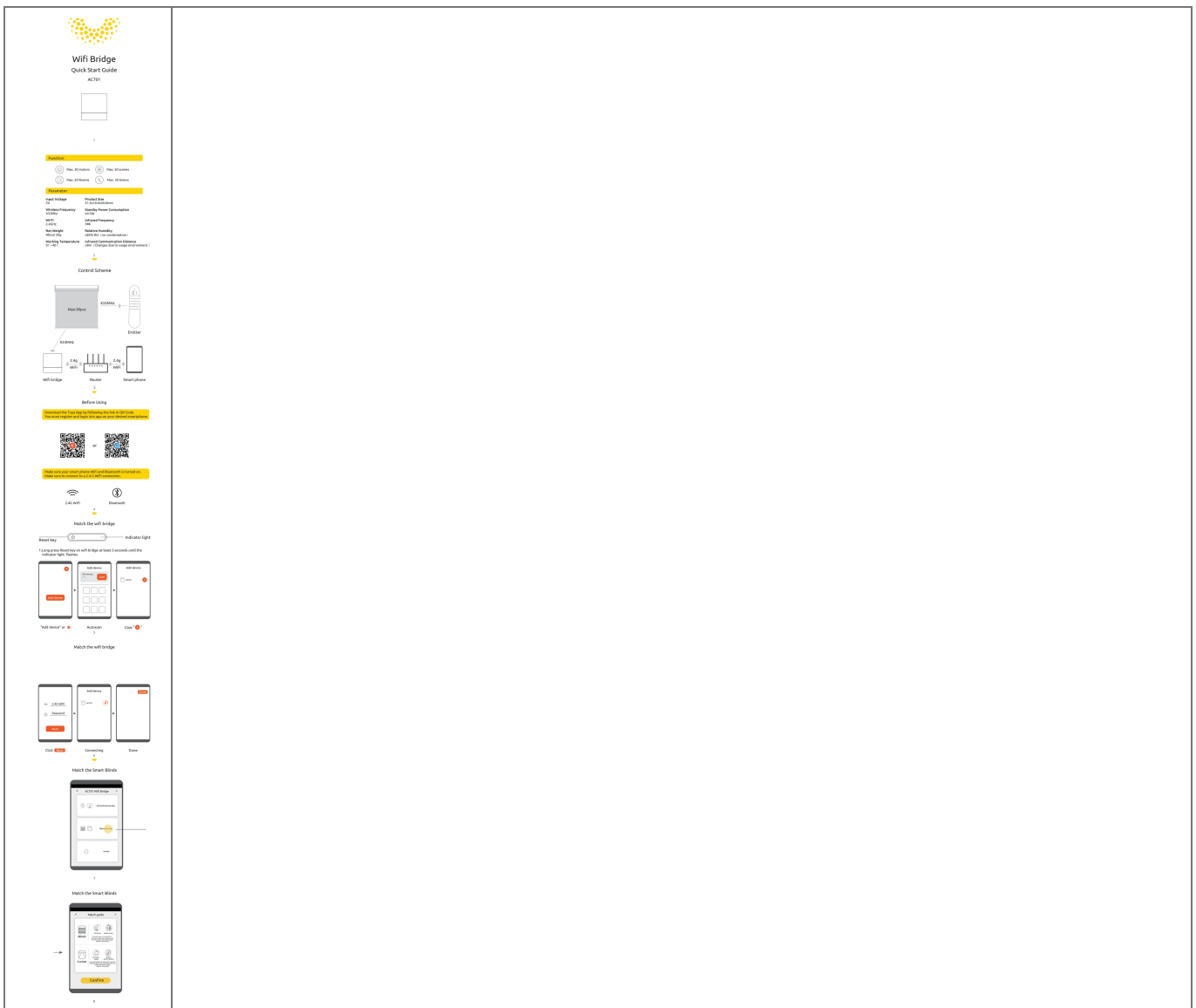


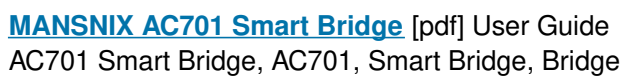
Click “+” to set multiple tasks at the same time

Select “run the device”, then select the changed shade, and then select the corresponding control button

Click “save” to complete all settings

## Documents / Resources





- [User Manual](#)