



[Home](#) » [ManoMano](#) » **manomano Floor Standing Lamp Instruction Manual** 

manomano Floor Standing Lamp Instruction Manual



Contents [[hide](#)]

[1 INSTRUCTIONS](#)

[2 Intended Use](#)

[3 Safety Instruction](#)

[4 General Safe Warnings](#)

[5 Maintenance and Care](#)

[6 Technical Data](#)

[7 What In the Box](#)

[8 Installation](#)

[9 Documents / Resources](#)

[9.1 References](#)

INSTRUCTIONS



ATTENTION! Read the safety and assembly instructions carefully, in order to avoid the risk of injury or damaging the product.



Important: Read these instructions carefully and thoroughly. Keep these instructions to read through at a later date. If you give the product to anyone else at some point in the future, please ensure you also pass on this manual



Only for domestic use and not for commercial use!



Keep small parts, plastic bags and other packaging out of the reach of children.

Pay attention especially when unpacking your item. Danger of suffocation! Check the delivery for completeness. Later complaints cannot be accepted. Check all elements and parts for damages. Despite careful control, products may be damaged in transit. In this case, do not assemble your product. Defective parts can endanger your health.



Never modify the product! Changes will void the warranty and the product may be unsafe or even dangerous.

Unpack all the parts and elements of the set and place the components on the top of the carton or other clean surface. This protects your new product.

Please also pay attention not to scratch the floor while working with tools.

Make sure that this product is fully assembled before use, as shown in the illustration. For cleaning use a sponge and warm soapy water.

Do not use solvent based-cleaners or detergents for example bleach. Those can damage the product.

Intended Use

Use the product only for its designed purpose of use. Manufacturer will not assume any responsibility in case of damages caused by an unappropriated use. Any modification applied by customer on the original product will have a negative impact on its safety,

cause danger and warranty will be cancelled.

Safety Instruction

- Before use, check that the power supply corresponds to that which is stated on the device's nameplate. Avoid any unintentional startup.
- Do not allow water or other liquids to get into the appliance. Do not expose it to rain.
- Do not use the appliance if the plug, the mains cord or other components are damaged.
- If the mains cord is damaged, you must have it replaced by a service centre authorized or similarly qualified persons in order to avoid a hazard. Otherwise there is a risk of electric shock. Never try to repair the appliance yourself.
- Never plug in or unplug the mains plug when your hands are wet.
- Avoid pulling the cord when removing the plug from the socket. Instead, hold the plug.
- Make sure that the mains cable is not squeezed, bent, damaged by sharp edges or put under mechanical stress. Avoid excessive thermal stress on the mains cable from extreme heat or cold. Do not modify the mains cable. Otherwise the mains cable may be damaged. A damaged mains cable can cause a deadly electric shock.
- This device is not intended for use by persons (adults and children) with physical, sensory or mental impairments or lacking experience and/or knowledge of use unless they are supervised by a person responsible for their safety or have received instructions from that person on how to use the applicator. Children should be supervised to make sure they do not play with the device.
- This product should only be used on solid and even supporting surface.

General Safe Warnings

- The product must not be exposed to extreme temperatures, high humidity or strong mechanical stress.
- Keep children away from the lamp, and do not leave them unsupervised with the lamp.
- Do not look directly into the light source! Your eyes could be damaged.
- Let the lamp cool down completely before changing the bulb. Risk of burning.
- Always place the lamp on an even and stable surface to prevent it tipping.
- Keep the lamp away from heat sources.

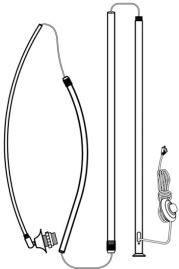
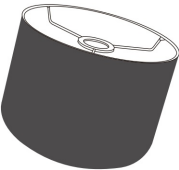
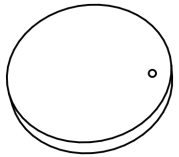


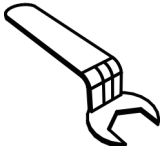
Maintenance and Care

- Before cleaning or maintenance the floor lamp, unplug the power cord from the wall outlet. Wait until the lamp has cooled down.
- The lamp is maintenance-free for you apart from a change of the lamp.
- Clean the lamp only with a soft, dry cloth. Do not use solvent based-cleaners or detergents for example Bleach those can damage the product.

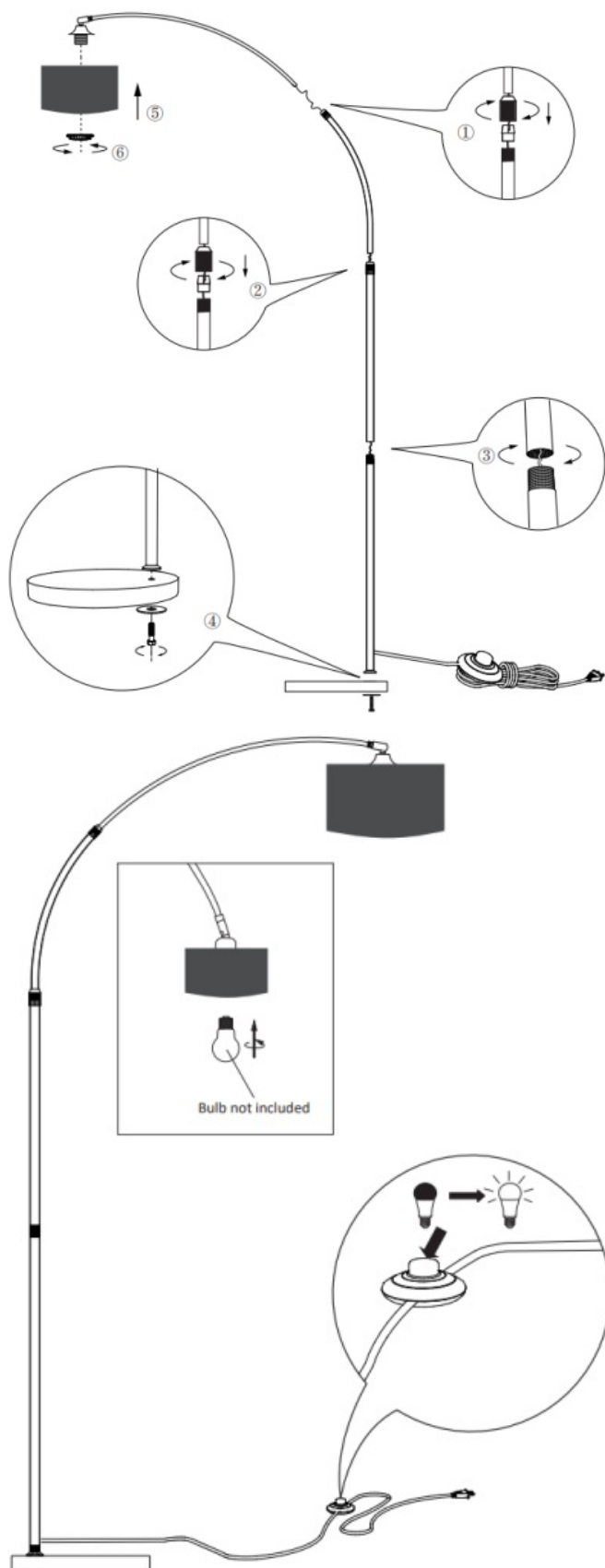
Technical Data

Bulb socket: E27*1, Max 60W, 220-240 V~, 50/60Hz

What In the Box

TEIL	NR	STK
	CO1	1
	CO2	1
	CO3	1
	CO4	1
	CO5	1
	CO6	1

Installation



This marking indicates that this product should not be disposed with other household wastes throughout the EU. To prevent possible harm to the environment or

human health from uncontrolled waste disposal, recycle it responsibly to promote the sustainable reuse of material resources. To return your used device, please use the return and collation systems or contact the retailer where the product was purchased. They can take this product for environmental safe recycling.

SCAN ME



Hergestellt für:

Deuba GmbH & Co. KG

Zum Wiesenhof 84 · 66663 Merzig · Germany

Made for: Deuba LTD

Wyatt Way, Thetford Norfolk, IP24 1HB

Copyright by



Artikel-/Modellnummer:

108093/109353-DBBL003/MZBL004



SCAN ME



Deuba Service portal

www.Deubaservice.de




Made for:



Deuba LTD Wyatt Way, Thetford Norfolk, IP24 1HB



Documents / Resources

	manomano Floor Standing Lamp [pdf] Instruction Manual 108093, 109353-DBBL003, MZBL004, Floor Standing Lamp, Standing Lamp, Lamp
---	--

References

- [User Manual](#)

🔖 108093, 109353-DBBL003, Floor Standing Lamp, lamp, ManoMano, MZBL004, Standing

📁 ManoMano Lamp

Leave a comment

Your email address will not be published. Required fields are marked *

Comment *

Name

Email

Website

☐ Save my name, email, and website in this browser for the next time I comment.

Post Comment

Search:

Search

[Manuals+](#) | [Upload](#) | [Deep Search](#) | [Privacy Policy](#) | [@manuals.plus](#) | [YouTube](#)

This website is an independent publication and is neither affiliated with nor endorsed by any of the trademark owners. The "Bluetooth®" word mark and logos are registered trademarks owned by Bluetooth SIG, Inc. The "Wi-Fi®" word mark and logos are registered trademarks owned by the Wi-Fi Alliance. Any use of these marks on this website does not imply any affiliation with or endorsement.