

Contents [[hide](#)]

- [1 manhattan M7071 Wireless Mouse](#)
- [2 Product Using Instruction](#)
- [3 FCC Statement](#)
- [4 FAQ](#)
- [5 Documents / Resources](#)
 - [5.1 References](#)

manhattan

manhattan M7071 Wireless Mouse

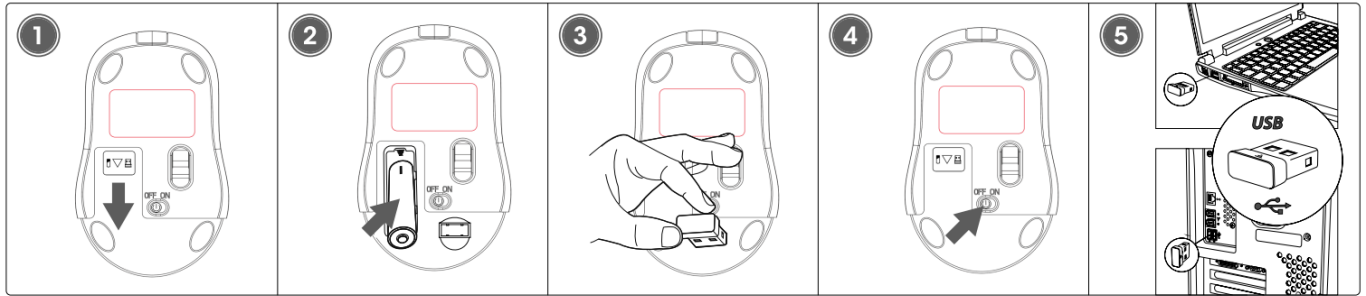


Specifications

- Model: M7071

- Compliance: Part 15 of the FCC Rules
- Operation Conditions: Must not cause harmful interference and must accept any received interference
- RF Exposure: Meets the general RF exposure requirement

Product Using Instruction



1. Open battery cover
2. Remove USB receiver
3. Insert battery.
4. Close battery cover. Turn on the mouse

Insert USB receiver into available port on computer. The computer operating system will automatically detect the device and install the proper drivers).

NOTE: If the computer doesn't detect the mouse, check the USB connection and the USB compatibility of your operating system (Windows XP/ Vista/7/10/11, macOS, Linux, and Chrome OS). For specifications, go to manhattanproducts.com.



CE/UKCA

The frequency band used for this product is 2402 – 2480 MHz. The maximum emitted transmission power is 5.89 mW E.I.R.P. This device complies with the requirements of CE RED 2014/53/EU (UKCA Radio Equipment Regulations 2017). The Declaration of Conformity for is available at:

support.manhattanproducts.com/barcode/

For additional benefits: Scan to register your product warranty or go to:

register.manhattanproducts.com/r/180771



FCC Statement

Warning:

This device complies with Part 15 of the FCC Rules. Operation is subject to the following two conditions:

1. This device may not cause harmful interference, and
2. This device must accept any interference received, including interference that may cause undesired operation.

Changes or modifications not expressly approved by the party responsible for compliance could void the user's authority to operate the equipment.

NOTE: This equipment has been tested and found to comply with the limits for a Class B digital device, pursuant to Part 15 of the FCC Rules. These limits are designed to provide reasonable protection against harmful interference in a residential installation. This equipment generates, uses and can radiate radio frequency energy and, if not installed and used in accordance with the instructions, may cause harmful interference to radio communications. However, there is no guarantee that interference will not occur in a particular installation. If this equipment does cause harmful interference to radio or television reception which can be determined by turning the equipment off and on, the user is encouraged to try to correct the interference by one or more of the following measures:

North & South America

- IC Intracom Americas
- 550 Commerce Blvd.
- Oldsmar, FL 34677, USA

Asia & Africa

- IC Intracom Asia
- 4-F, No. 77, Sec. 1, Xintai 5th Rd.
- Xizhi Dist., New Taipei City 221, Taiwan

Europe


- IC Intracom Europe
- Löhbacher Str. 7
- D-58553 Halver, Germany

All trademarks and trade names are the property of their respective owners. © IC Intracom. All rights reserved. Manhattan is a trademark of IC Intracom, registered in the U.S. and other countries.

FAQ

- **Q: What should I do if the device is exposed to interference?**
 - A: Ensure the device is compliant with FCC Rules and try repositioning it to minimize interference.
- **Q: How do I know if the device is causing harmful interference?**
 - A: Monitor for any disruptions in nearby electronic devices or communication systems.

Documents / Resources



[manhattan M7071 Wireless Mouse \[pdf\]](#) Instructions
M7071 Wireless Mouse, M7071, Wireless Mouse, Mouse

References

- [Manhattan Products: HDMI Adapters, Cables, TV Mounts, Barcode Scanners](#)
- [Produktgarantie – Manhattan Deutschland](#)
- [Manhattan Products Account and Product Registration](#)
- [User Manual](#)

🔖 M7071, M7071 Wireless Mouse, Manhattan, mouse, Wireless

📁 Manhattan Mouse

—Previous Post

[manhattan KM-236W Wireless Keybord Instructions](#)

Next Post—

[manhattan M7034 Wireless Mouse Instructions](#)



Leave a comment

Your email address will not be published. Required fields are marked *

Comment *

Name

Email

Website

☐ Save my name, email, and website in this browser for the next time I comment.

Post Comment

Search:

e.g. whirlpool wrf535swhz

Search

[Manuals+](#) | [Upload](#) | [Deep Search](#) | [Privacy Policy](#) | [@manuals.plus](#) | [YouTube](#)

This website is an independent publication and is neither affiliated with nor endorsed by any of the trademark owners. The "Bluetooth®" word mark and logos are registered trademarks owned by Bluetooth SIG, Inc. The "Wi-Fi®" word mark and logos are registered trademarks owned by the Wi-Fi Alliance. Any use of these marks on this website does not imply any affiliation with or endorsement.