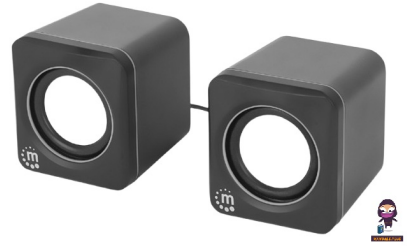



2600 Series
Speaker
System



manhattan 2600 Series Speaker System Instructions

[Home](#) » [Manhattan](#) » manhattan 2600 Series Speaker System Instructions 

Contents

- [1 manhattan 2600 Series Speaker System](#)
- [2 Documents / Resources](#)
 - [2.1 References](#)



manhattan 2600 Series Speaker System



Important: Read before use

1. Plug the USB cable into an active USB port (USB-A to USB-C adapter included).
2. Increase the volume on the audio source to 100%. Use the speaker's in-line volume control to adjust volume to the desired level. For specifications, go to manhattanproducts.com.



For additional benefits:

- Scan to register your product warranty



- 102698 (Black&Orange)



- 102704 (Black&Silver)

or go to:

- register.manhattanproducts.com/r/102698
- register.manhattanproducts.com/r/102704

Waste Electrical & Electronic Equipment

Disposal of Electric and Electronic Equipment (applicable in the E.U. and other countries with separate collection systems)



— This symbol on the product or its packaging means that this product must not be treated as unsorted household waste. In accordance with EU Directive 2012/19/EU on Waste Electrical and Electronic Equipment (WEEE), this electrical product must be disposed of in accordance with the user’s local regulations for electrical or electronic waste. Please dispose of this product by returning it to your local point of sale or recycling pickup point in your municipality

Warranty at:

- manhattanproducts.com

Regulatory Statements

FCC Class B

This equipment has been tested and found to comply with the limits for a Class B digital device, pursuant to Part 15 of Federal Communications Commission (FCC) Rules. These limits are designed to provide reasonable protection against harmful interference in a residential installation. This equipment generates, uses and can radiate radio frequency energy, and if not installed and used in accordance with the instructions may cause harmful interference to radio communications. However, there is no guarantee that interference will not occur in a particular installation. If this equipment does cause harmful interference to radio or television reception, which can be determined by turning the equipment off and on, the user is encouraged to try to correct the interference by one or more of the following measures: reorient or relocate the receiving antenna; increase the separation between the equipment and the receiver; connect the equipment to an outlet on a circuit different from the receiver; or consult the dealer or an experienced radio/TV technician for help.

- This device complies with the requirements of CE 2014/30/EU (UKCA Electromagnetic Compatibility Regulations 2016) and / or 2014/35/EU (UKCA Electrical Equipment [Safety] Regulations 2016). The Declaration of Conformity is available at:
- support.manhattanproducts.com/barcode/102698
- support.manhattanproducts.com/barcode/102704

All trademarks and trade names are the property of their respective owners. © IC Intracom. All rights reserved. Manhattan is a trademark of IC Intracom, registered in the U.S. and other countries.

Documents / Resources

	manhattan 2600 Series Speaker System [pdf] Instructions 102698, 102704, 2600 Series Speaker System, 2600 Series, Speaker System, System
	manhattan 2600 Series Speaker System [pdf] Instructions 102698, 102704, 2600 Series Speaker System, 2600 Series, Speaker System, System

References

-  [**Manhattan Products: HDMI Adapters, Cables, TV Mounts, Barcode Scanners**](#)
-  [**Produktgarantie – Manhattan Deutschland**](#)
-  [**Manhattan Products Account and Product Registration**](#)
-  [**Manhattan Products Account and Product Registration**](#)
- [**User Manual**](#)

Manuals+, Privacy Policy

This website is an independent publication and is neither affiliated with nor endorsed by any of the trademark owners. The "Bluetooth®" word mark and logos are registered trademarks owned by Bluetooth SIG, Inc. The "Wi-Fi®" word mark and logos are registered trademarks owned by the Wi-Fi Alliance. Any use of these marks on this website does not imply any affiliation with or endorsement.