



ManageEngine Connect and Control Devices via USB Software User Guide

[Home](#) » [ManageEngine](#) » ManageEngine Connect and Control Devices via USB Software User Guide 

Manage Engine Connect and Control Devices via USB Software User Guide

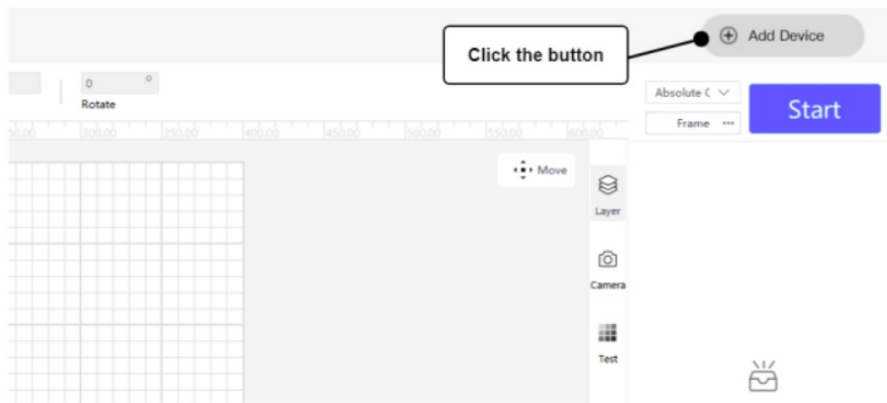


Contents

- [1 Connect and control devices via USB](#)
- [2 Documents / Resources](#)
 - [2.1 References](#)
- [3 Related Posts](#)

Connect and control devices via USB

1. Open AtomStack Studio software and click the “Add Device” button.

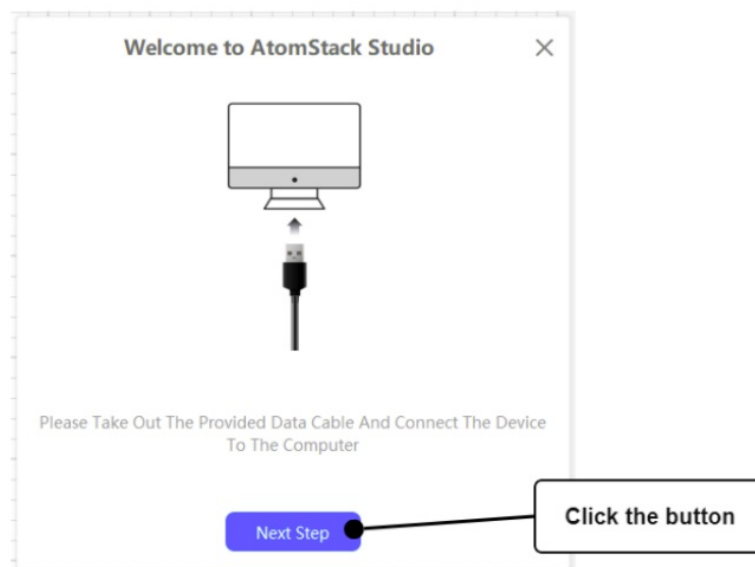


2. Connect engraver to the computer through equipped USB cable and click “Next”. Please check followings in case of connection failure:

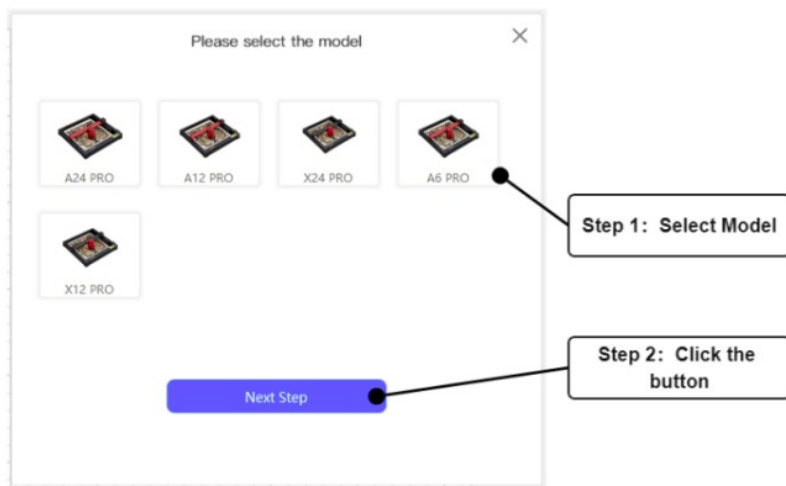
1. Please check whether the device and computer serial port are working properly. You can try other serial ports.
2. If you simultaneously connect to other software (e.g., Light burn) while using the current device, please close other similar software.
3. The computer USB driver version is out of date, please update it:

Windows driver: <https://asa.atomstack.com/downloadWindowsDrivers.do3>.

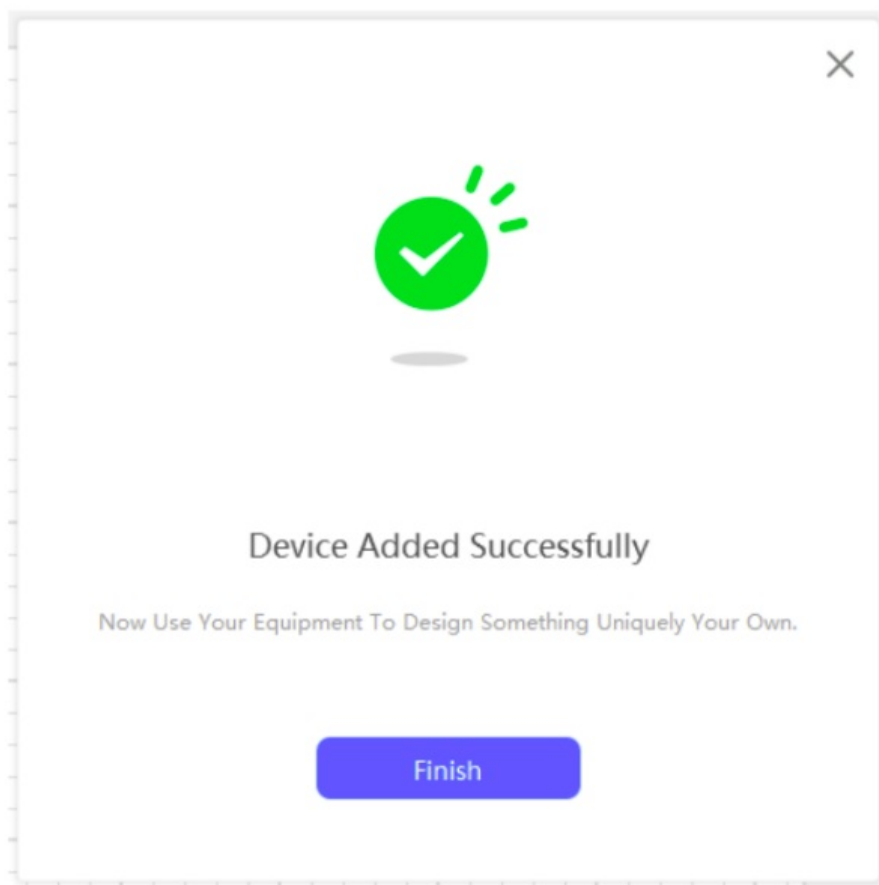
Mac driver: <https://asa.atomstack.com/downloadMacDrivers.do3>.




3. Select correct model and click “Next Step”



4. The device is added successfully, now start your creation.



Documents / Resources

	<p>ManageEngine Connect and Control Devices via USB Software [pdf] User Guide Connect and Control Devices via USB Software, Software</p>
---	--

References

- [User Manual](#)

[Manuals+](#), [Privacy Policy](#)

This website is an independent publication and is neither affiliated with nor endorsed by any of the trademark owners. The "Bluetooth®" word mark and logos are registered trademarks owned by Bluetooth SIG, Inc. The "Wi-Fi®" word mark and logos are registered trademarks owned by the Wi-Fi Alliance. Any use of these marks on this website does not imply any affiliation with or endorsement.