



# MAN MACHINE Its Cool Flat Wireless Keyboard User Manual

[Home](#) » [MAN MACHINE](#) » MAN MACHINE Its Cool Flat Wireless Keyboard User Manual 

## Contents

- [1 MAN MACHINE Its Cool Flat Wireless Keyboard](#)
- [2 OVERVIEW](#)
- [3 RF connected Installation](#)
- [4 RF connected Pairing](#)
- [5 BT connected Installation](#)
- [6 Dual use: RF and BT](#)
- [7 Battery charging](#)
- [8 Approved cleaning methods keyboard](#)
- [9 Product warranty statement](#)
- [10 FCC Statement](#)
- [11 CONTACTS](#)
- [12 Documents / Resources](#)
  - [12.1 References](#)
- [13 Related Posts](#)

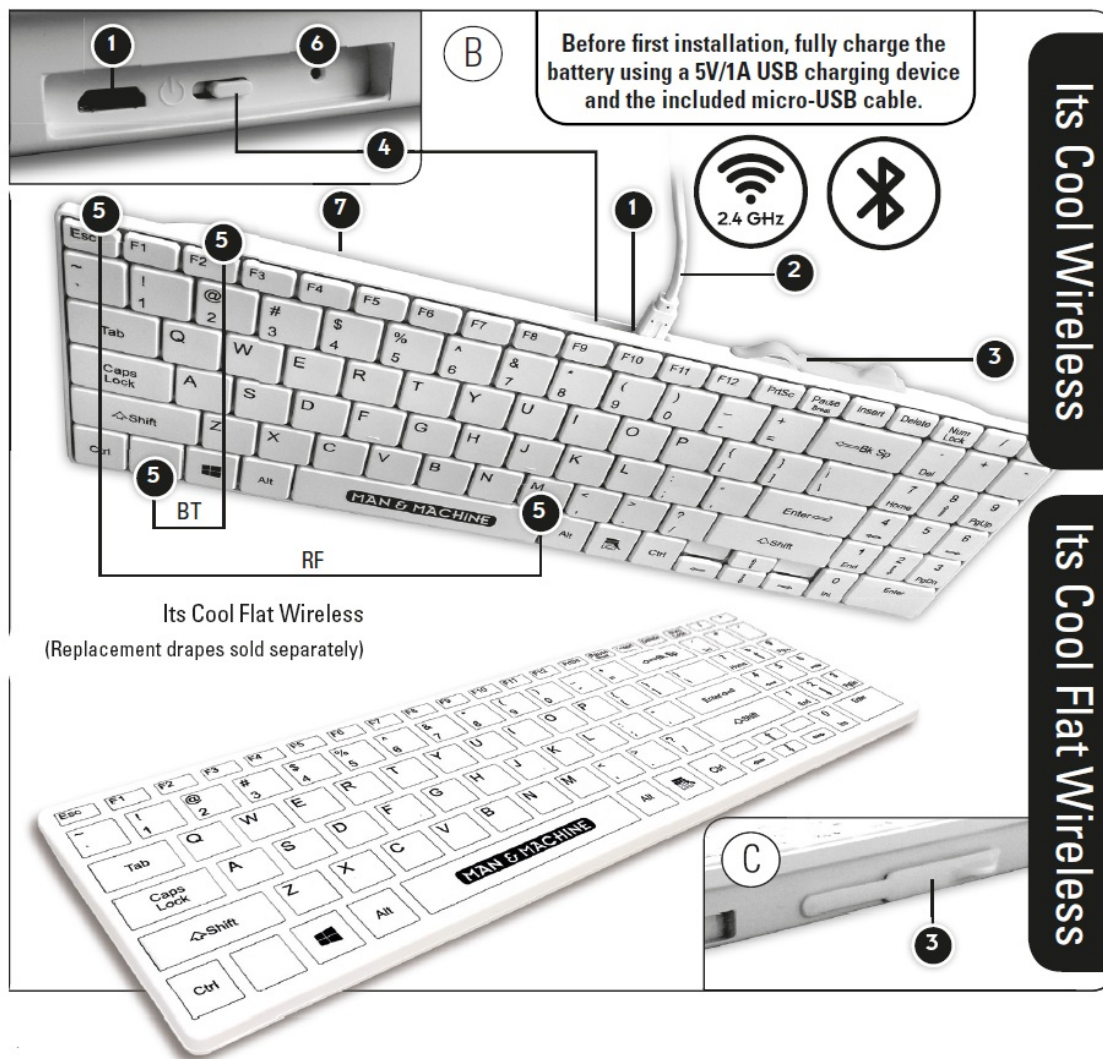
**MAN & MACHINE**

**MAN MACHINE Its Cool Flat Wireless Keyboard**



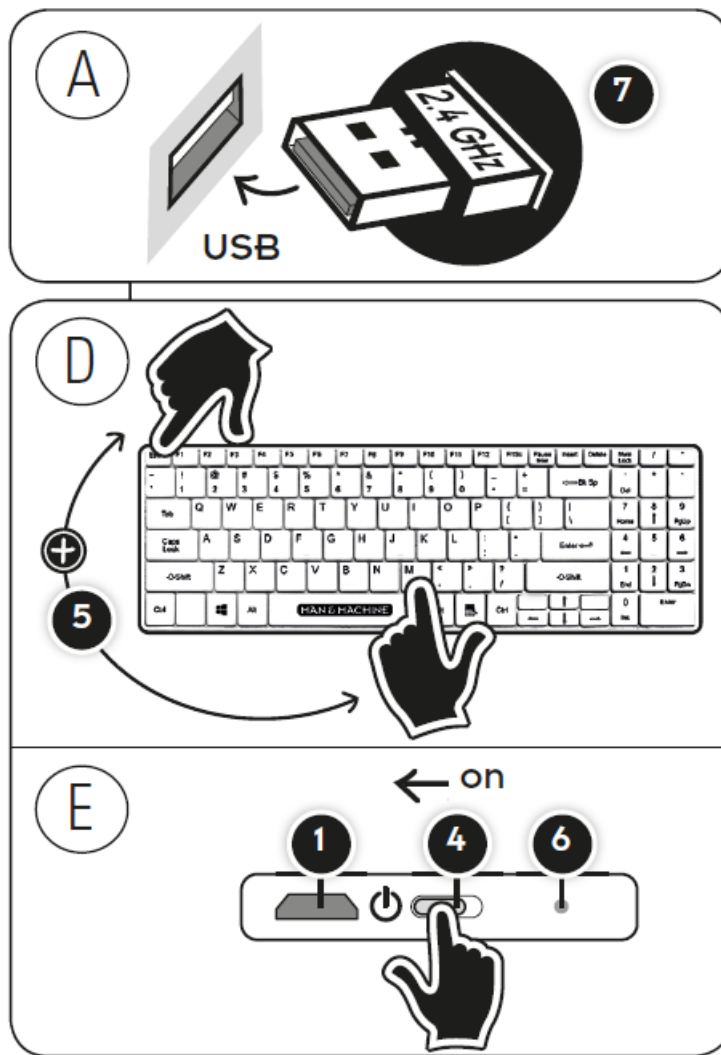
Before first installation, fully charge the battery using a 5V/1A USB charging device and the included micro-USB cable.

## OVERVIEW



1. **Micro USB port:** Used to connect Battery charging cable. Cover during washing or rinsing.
2. **Battery charging cable:** Used to charge keyboard battery.
3. **Port cover:** Used to cover Micro USB port during washing or cleaning.
4. Power switch
5. Pairing keys
6. **LED indicator:** Red: keyboard battery is charging; blinking blue or green: keyboard is trying to pair; solid blue or green: keyboard is in paired mode and connected to the computer.
7. **USB Dongle:** Used when using RF connection method to transmit keyboard USB signal to computer. Located on bottom of keyboard.

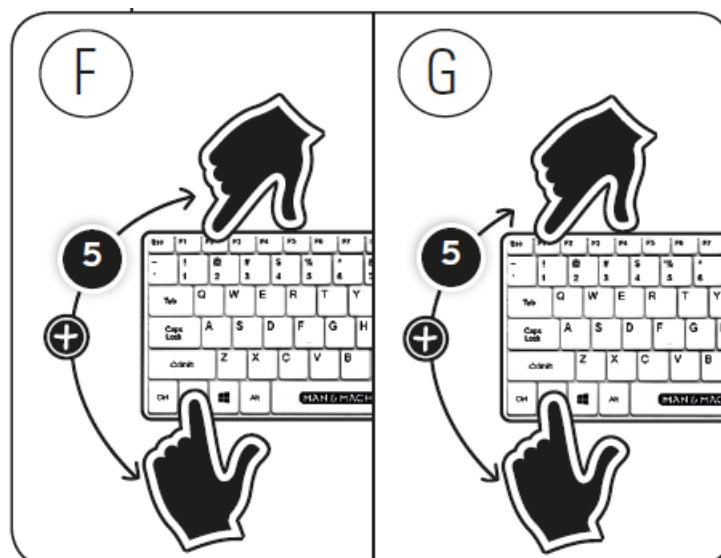
## RF connected Installation



Before first installation, fully charge the battery using a 5V/1A USB charging device and the included micro-USB cable. Place USB Dongle (7) in the computer USB port. Note that each dongle is different and is paired with its own keyboard. Turn keyboard on (4). Wait for keyboard to pair automatically.

If you are using this keyboard in combination with a Man & Machine C Mouse Wireless you can use one USB dongle to connect both devices. Once you have installed the first device and let it pair automatically, follow the pairing procedure to connect the second device to the same dongle.

## RF connected Pairing



The keyboard is already paired with the USB dongle that comes with it.

To pair the keyboard with another dongle or to re-pair it with the dongle it comes with: Make sure keyboard is on (4). Hold down 'ESC' and M keys simultaneously for 3 seconds to start pairing. LED indicator (6) will blink green when pairing. Allow 20 seconds for keyboard to pair. If the USB dongle is plugged in, unplug the USB dongle and plug it back in. Keep the keyboard close to the USB dongle. Once the keyboard is paired and connected to the PC, the green LED indicator will turn solid blue (6).

**Note:** The keyboard will not work if it has lost it's pairing.

## **BT connected Installation**

Before first installation, fully charge the battery using a 5V/1A USB charging device and the included micro-USB cable. Turn keyboard on (4). Pair keyboard.

## **BT connected Pairing**

To pair or to re-pair the keyboard: Make sure keyboard in on (4). Hold down 'BLANK' and 'F2' keys simultaneously for 3 seconds to start pairing. LED indicator (6) will blink blue when pairing. Allow 120 seconds for keyboard to pair. Once the keyboard is paired and connected to the PC, the green LED indicator will turn solid blue (6). Note: The keyboard will not work if it has lost it's pairing.

## **Dual use: RF and BT**

It is possible to enable RF and BT and switch between connection methods. Follow Installation instructions for both. To switch to RF connection, press 'BLANK' and 'F1' keys (See Figure G). To switch to BT connection, press 'BLANK' and 'F2' keys (See Figure F).

## **Battery charging**

Use battery charging cable (2). Connect Micro USB connector to keyboard, connect USB connector to 5V USB charging device or powered USB computer port. LED indicator (6) will turn red when charging. The red light will go off when fully charged.

Remove and store cable for future use. Tip: Turn keyboard off when not in use to maximize battery life. Note: The keyboard will not work if the battery is depleted. Charge timely following procedure described above.

**Note:** Only use the included micro-USB cable to charge.

## **Approved cleaning methods keyboard**

- You can wipe the product with a soft cloth that is non-abrasive such as a microfiber cloth, a disinfecting wipe, or a soft brush similar to a paint brush in bristle stiffness or a sponge, but not a scourer of any sort.
- You can spray the product with soap and water or an approved disinfectant.
- You can rinse the product with soap and water or an approved. disinfectant. Before rinsing, remove cable (2) from port (1) and cover port (1) with cover (3). Make sure cover (3) is fully inserted.

## **Approved cleaning methods drape**

- You can wipe, spray or rinse the product as described under "Approved cleaning methods keyboard".

- You can immerse the product in soap and water or an approved disinfectant.
- You can expose the product to Hydrogen Peroxide Vapour (HPV).
- You can sterilize the product in an autoclave or thermo disinfectant up to 270 °F (134 °C), (tested 200 cycles).

### **Approved disinfectants**

- Chlorine-based, up to 100,000 ppm (10%) bleach content
- Alcohol-based
- Glutaraldehyde based
- Phenol based
- Formaldehyde-based, up to 370,000 ppm (37%) formaldehyde content
- Oxidizing, such as Hydrogen Peroxide, up to 30,000 ppm (3%) content
- Quaternary Ammonium, up to 20,000 ppm (2%) content.

### **Restrictions**

- Only clean using the cleaning methods and disinfectants described under “Cleaning instructions” in this manual.
- The product can not be immersed in liquid.
- Always follow the instructions provided by the cleaning product manufacturer.
- Do not use petroleum based cleaning liquids nor Acetone or abrasive cleaning aids and products.
- Do not expose the product to temperatures below 32 °F or above 131 °F (below 0 °C or above 70 °C).
- Do not use temperature or pressure sterilization.

### **Product warranty statement**

Man & Machine, Inc. (“Manufacturer”) warrants to the original purchaser (the “Customer”) that the products it manufactures (“Product”) shall be free from defects in materials and workmanship at the time of shipment. Manufacturer’s sole obligation under this Warranty shall be limited to repairing or replacing with the same or comparable item, at its option, free of charge, any product returned to Manufacturer freight prepaid that is deemed to have failed under the Manufacturer’s warranty. The manufacturer shall have no obligation under this Warranty or otherwise if (1) the Product has been damaged by abuse, negligence, accident, mishandling, lightning or wood, or other natural disasters, (2) the Product has been affected by normal wear and tear, (3) the Product has not been operated in accordance with its operating instructions, (4) the Product has been altered or repaired by anyone outside Manufacturer (5) adaptations or accessories have been made or attached to the Product which, in Manufacturer’s sole determination, have adversely affected its performance, safety or reliability. If a Product should malfunction or fail during the warranty period, contact the original place of purchase for return options. If purchased directly from Man & Machine, Inc., please submit a Return Material Authorization (RMA). This form can be located on our website at <http://www.man-machine.com/returnsreplacements/>.

Please complete the requested information and provide a detailed description of the problem. Returned Products must include the RMA number clearly marked on the outside of the package. The manufacturer will not be responsible for any unnecessary items included with any returned Product.

### **FCC Statement**

This equipment has been tested and found to comply with the limits for a Class B digital device, pursuant to part 15 of the FCC Rules. These limits are designed to provide reasonable protection against harmful interference in a residential installation. This equipment generates, uses and can radiate radio frequency energy and, if not

installed and used in accordance with the instructions, may cause harmful interference to radio communications. However, there is no guarantee that interference will not occur in a particular installation. If this equipment does cause harmful interference to radio or television reception, which can be determined by turning the equipment off and on, the user is encouraged to try to correct the interference by one or more of the following measures:

- Reorient or relocate the receiving antenna.
- Increase the separation between the equipment and receiver.
- Connect the equipment into an outlet on a circuit different from that to which the receiver is connected.
- Consult the dealer or an experienced radio/TV technician for help.

**Caution:** Any changes or modifications to this device not explicitly approved by manufacturer could void your authority to operate this equipment.

This device complies with part 15 of the FCC Rules. Operation is subject to the following two conditions:

1. This device may not cause harmful interference.
2. this device must accept any interference received, including interference that may cause undesired operation.

## **RF Exposure Information**

The device has been evaluated to meet general RF exposure requirement. The device can be used in portable exposure condition without restriction.

The Windows logo is a trademark or registered trademark of Microsoft Corporation in the United States and/or other countries.

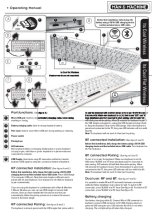
Copyright Man & Machine, Inc. 2021

## **CONTACTS**

- **USA**
- [info@mmimd.com](mailto:info@mmimd.com)
- +1 301 341 4900
- **Europe**
- [info@mmieu.com](mailto:info@mmieu.com)
- +31 (0) 23 5450185



[www.man-machine.com](http://www.man-machine.com)

## **Documents / Resources**



**[MAN MACHINE Its Cool Flat Wireless Keyboard](#)** [pdf] User Manual  
ITSCBTWI, X5D-ITSCBTWI, X5DITSCBTWI, Its Cool Wireless, Its Cool Flat Wireless, Its Cool Flat, Wireless Keyboard, Its Cool Flat Wireless Keyboard, Its Cool Series

## References

-  [Washable Keyboards For Medical & Industrial Environments | Man & Machine](#)
-  [Returns/Replacements | Man & Machine™ Washable Keyboards, Mice & Privacy Monitors](#)