

  
**MAMMUT**  
**Barryvox S2**  
**Avalanche**  
**Transceiver**



# Mammut Barryvox S2 Avalanche Transceiver User Guide

[Home](#) » [MAMMUT](#) » Mammut Barryvox S2 Avalanche Transceiver User Guide 

## Contents

- [1 Mammut Barryvox S2 Avalanche Transceiver](#)
- [2 Introduction](#)
- [3 Getting Started](#)
- [4 Guidance](#)
- [5 User interface](#)
- [6 On Tour](#)
- [7 Service and maintenance](#)
- [8 Technical specifications](#)
- [9 Contact](#)
- [10 Documents / Resources](#)
  - [10.1 References](#)



**Mammut Barryvox S2 Avalanche Transceiver**



## Introduction

Congratulations on the purchase of your Barryvox ® 2. Here you will learn the basic operation and use of your avalanche transceiver. The Barryvox® avalanche transceiver is suitable for all sports in avalanche-prone terrain, as they pose inherent dangers. Knowledge and experience are essential to reduce the risk of injury or even death. Do not go into the terrain unless you are accompanied by an experienced person or have sufficient training and experience. Be attentive, rational and aware of possible dangers. Never go into avalanche-prone terrain alone. You **MUST** read and understand the user manual before using the avalanche transceiver in avalanche-prone terrain! Incorrect use can significantly impair the search for buried subjects as well as the performance and safety of this device. The avalanche transceiver must always be securely attached to your body. In an emergency, it is vital that you are proficient in the theory and practice of avalanche awareness and train regularly. Plan carefully and never go into avalanche-prone terrain without the Essential 4 (avalanche transceiver, shovel, probe and avalanche backpack).

## Getting Started

### Fasten safety leash and insert batteries

- Attach the safety leash to the eyelet on the device.
- Open the battery compartment, insert the supplied alkaline batteries and close the flap by snapping it into place.

## **Install the Barryvox® app**

- Install: Firmware updates
- Organize: Device configuration
- Training: Barryvox® training park
- Benefit: Warranty extension

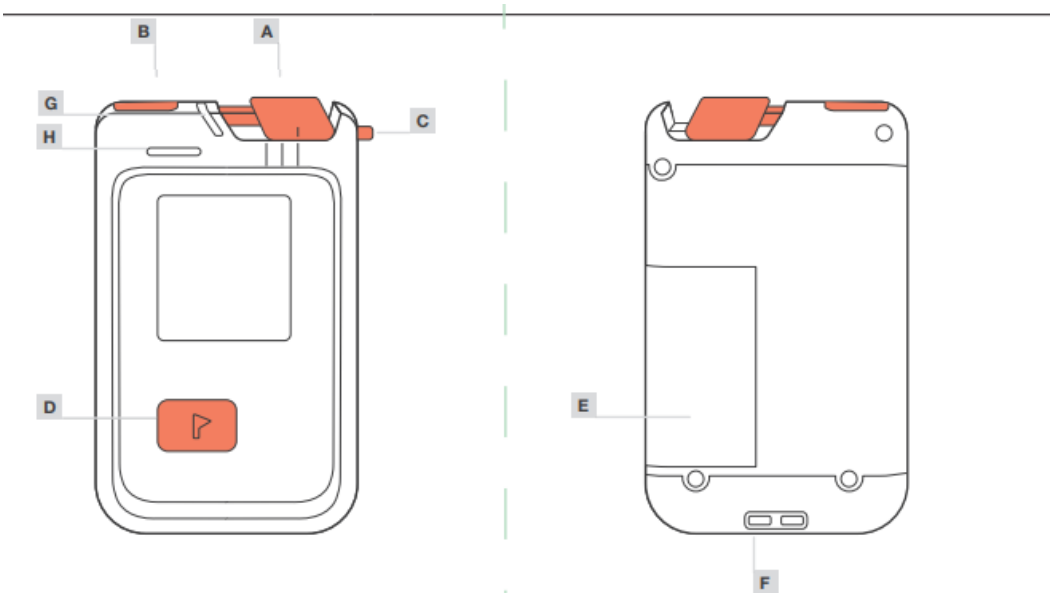


## **App installed? Connect your Barryvox® via Bluetooth®**

- Activate Bluetooth on your smartphone, open the Barryvox® app and select “Add device.”
- Slide the main switch of the Barryvox® from OFF to SEND. After switching on, Bluetooth is active for 90 seconds.
- The Bluetooth connection between Barryvox® and the smartphone is established.
- Confirm on your smartphone with “Connect.”
- Disconnect in the app after you have made all the changes. The Barryvox® will now emit a three-beep sequence to confirm that it is in transmit mode.

Do not use the Bluetooth connection while you are on tour! As long as the Barryvox® is connected to a smartphone, it will not send a signal.

Guidance



A	Main switch OFF / SEND / SEARCH	OFF position: Device is switched off SEND position: Device is in Send mode SEARCH position: Device is in Search mode
B	Unlock button	Hold down to move main switch away from SEND. The Unlock button is not required to set to SEND.
C	SEARCH-to-SEND switching aid	Switch from SEARCH to SEND
D	Mark button	Confirm selection In SEARCH: Mark localized buried subject
E	Battery compartment	
F	Eyelet for safety leash	
G	SEND indicator light	Flashing every second: Transmission signal OK No flashing: Transmission signal impaired (observe warning on display) In rescue SEND, double flashing every 3s
H	Loudspeaker	

## User interface

SEND



In the first few seconds after switching on:

Group check

SEND



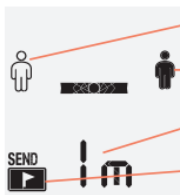
Bluetooth symbol (flashing for 90 seconds after switching on, during this time a connection with the smartphone can be established)

Battery status

Send mode

Self test confirmation

SEND



Group member

Lead person

Status information or note for lead person

Press the Mark button to end the group check and go to SEND

SEARCH



Search direction

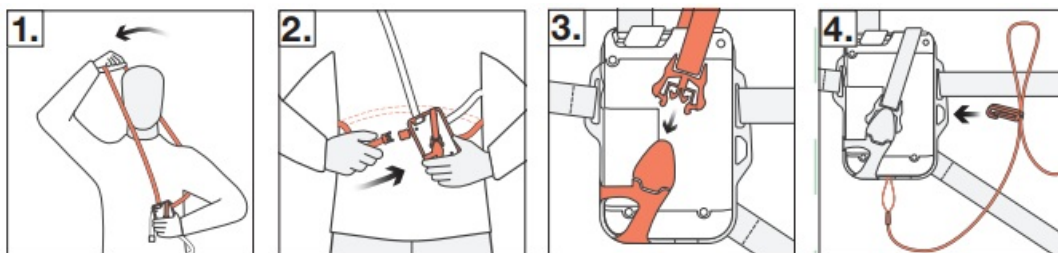
Signal search

Selected buried subject

Distance to the detected signal

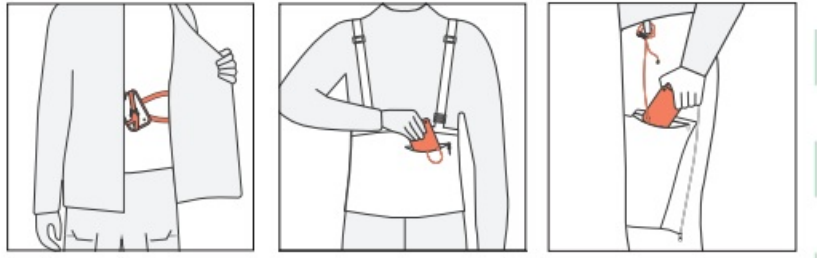
## On Tour

Putting on the carrying system



1. Pull the black strap of the carrying system over your head and left arm.
2. Place the gray elastic band around your waist and close the quick-release fastener. Adjust the strap lengths so that the carrying system is close to your body and fits securely.
3. Insert the Barryvox® into the holder with the display facing the carrying system and close the quick-release fastener around the Barryvox®.
4. Attach the carabiner of the safety leash to the carrying system

## Warning



- Wear the Barryvox® in the carrying system (recommended) over the base layer of clothing and cover it with at least one clothing layer.
- Carry the Barryvox® without the carrying system in a zippered front trouser or bib pocket.
- Attach the safety leash to your pants or pull it through a belt.
- Always point the Barryvox® display towards your body.

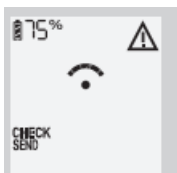
### Check distance from sources of interference

The signal from an avalanche transceiver can be negatively affected by metallic or electronic objects. These include smartphones, radios, headlamps, sports watches, action cameras, heated gloves, pacemakers and magnetic buttons.

Check that your avalanche transceiver is at least the following distance from metallic or electronic objects:

- On SEND: 20 cm
- On SEARCH: 50 cm and electronic devices off

The Barryvox® continuously conducts a self test from the moment it is switched on, checking battery status and general functionality. Follow the instructions on your Barryvox® and do not set off on tour if a warning is displayed.



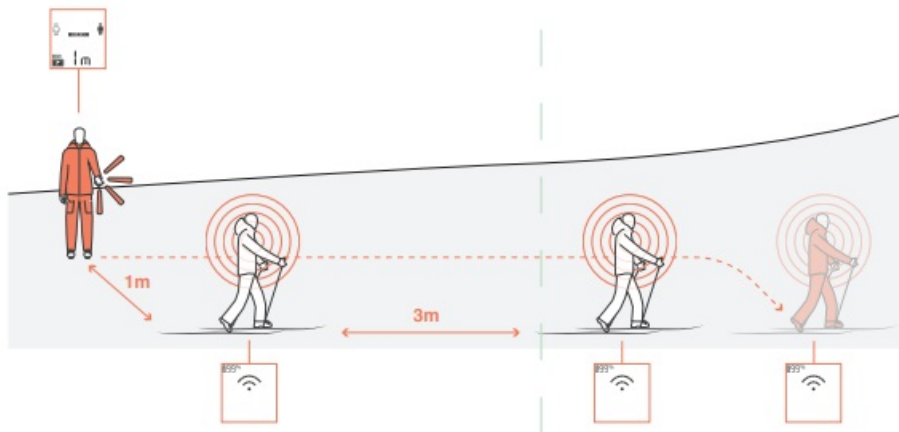
- Warning: Device transmits with reduced transmission power.

### Set to SEND

Keep your Barryvox® on SEND in all situations where there is an avalanche risk. To save energy, the display turns off after 30 seconds. Press any button to reactivate it.

### Performing a group check

Before setting off on tour, the avalanche transceivers of all group members must be checked by the group leader using the group check function. The Barryvox® tests the correct transmission function and signal strength.



1. All group members switch their avalanche transceivers to SEND.
2. The lead person sets their Barryvox® from OFF to SEND and presses the Mark button in the first 5 seconds to start the group check.
3. Group members stand at least 3 m away from each other so as not to interfere with each other's signal.
4. The lead person checks the signal of all avalanche transceivers one after the other at a distance of 1 m, but no less than 0.5 m. The Barryvox® of the lead person must give at least one double beep and display the confirmation "Group Check OK" within the test distance for each avalanche transceiver that is checked. Do not use the tested device if no sound is audible within the displayed test distance or a warning is displayed.

In case of irregularities, check:

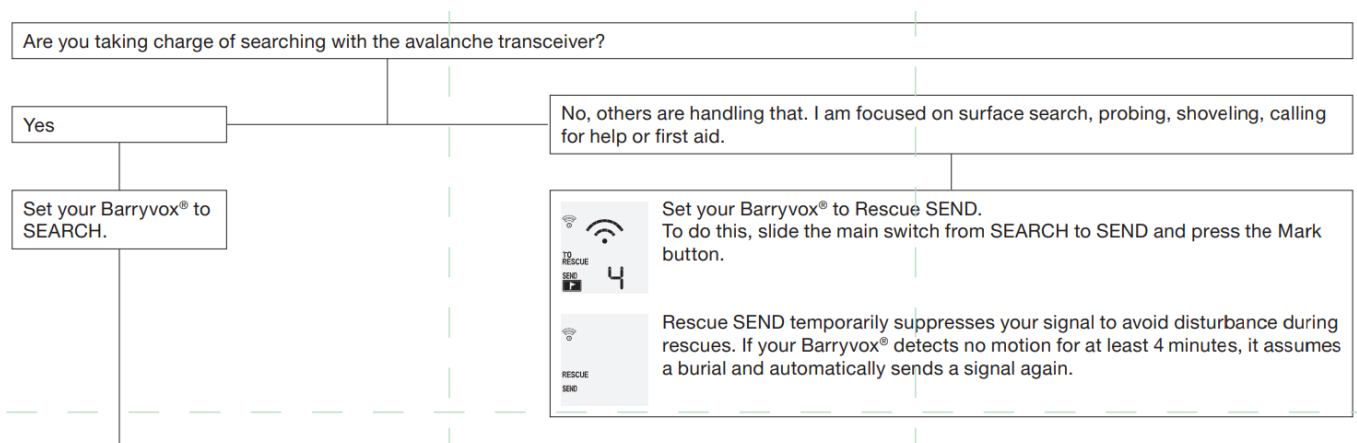
- Is the avalanche transceiver set to SEND?
- Are the batteries OK?
- Distance rule observed?

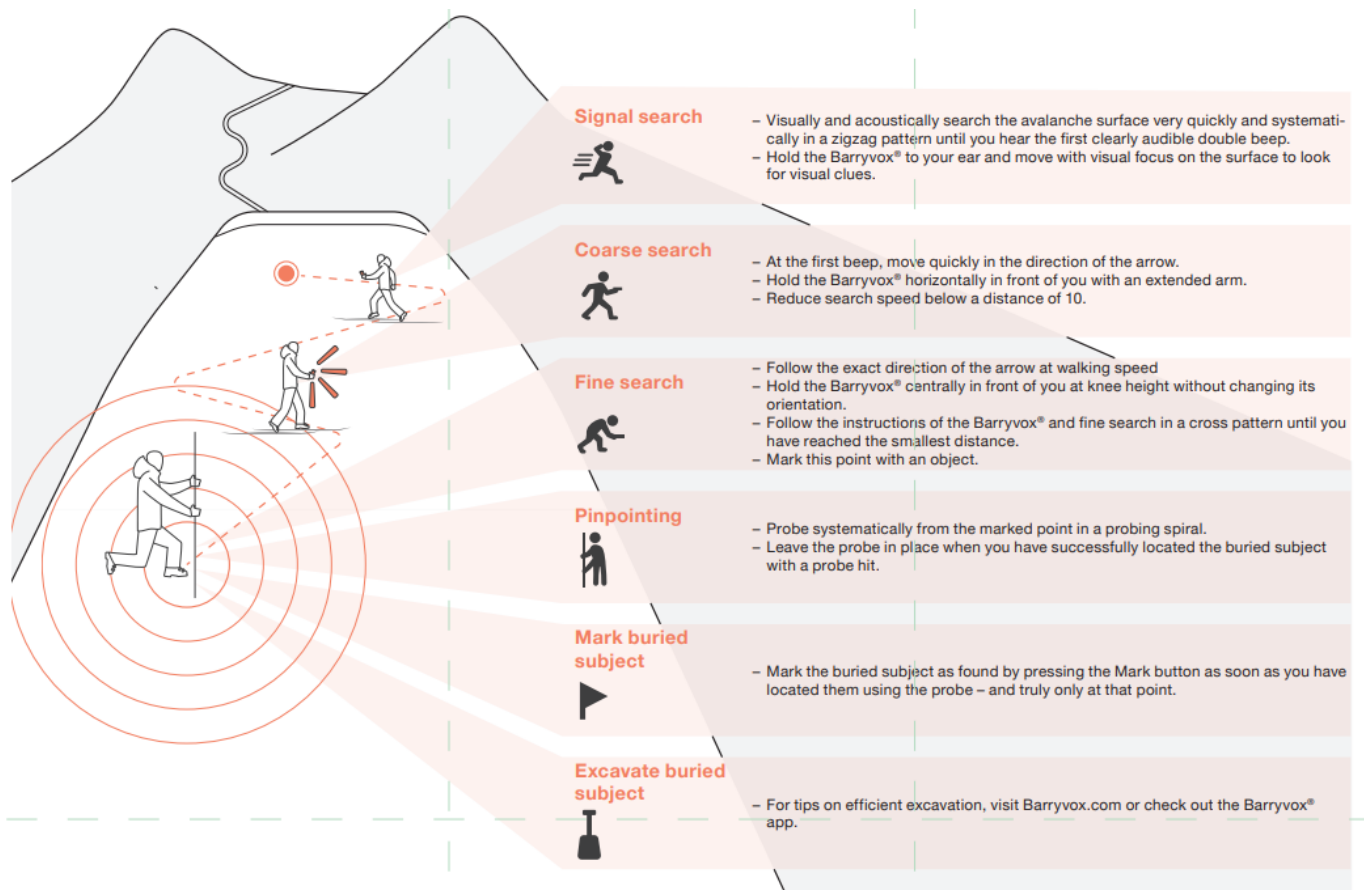
Warning still there? Have your device checked by the manufacturer.

5. The lead person closes the group check with the Mark button and thus switches to SEND. A three-beep sequence confirms this.

## In Search mode

In order for the search for buried subjects to be successful in an emergency, training must be conducted precisely and on a regular basis. Information about the search and rescue process, the mobile Barryvox® training park and details regarding avalanche courses in your area can be found on [Barryvox.com](https://barryvox.com) and in the Barryvox® app.





- Search procedure for multiple buried subjects

If several people may have been buried, continue the search. Keep track of all buried subjects on your Barryvox®. The flag symbol in the sidebar indicates that a buried subject has been detected and marked.



- Automatic switching from search to send

If you are caught by a secondary avalanche during the search, the Barryvox ® automatically switches to SEND after 4 minutes without user intervention or movement.

## Service and maintenance

### Inspection

#### Before and after every tour

- The housing must not be damaged and the display must be easy to read.
- All switches and buttons must function properly.
- The battery compartment must be dry and free of corrosion.
- Prior to every tour, the battery status of your Barryvox® should be at least 40% with alkaline batteries.

#### Prior to the season



- Check if you need to replace your batteries and use only new alkaline (LR03/AAA) batteries of the same type and never rechargeable batteries. When replacing the batteries with new ones, always replace all of the batteries at the same time.
- Check if firmware updates are available.

### **After the season**

- Remove the batteries from the device to prevent them from leaking during prolonged storage.
- Have your device officially checked regularly. The next maintenance date can be seen when you switch off your Barryvox®.

### **Safety-relevant information**

Please note the following safety instructions and contact us if you have any questions or if you are not sure about anything.

The Barryvox® has been developed with maximum care and consideration for all safety-relevant factors. Nevertheless, the following potential risks remain:

- Risk of losing the device if carried incorrectly: Keep the Barryvox® in the intended carrying system or a secured bag and fasten it with the safety leash.
- Risk of explosion due to incorrectly used batteries or damaged batteries, risk of incorrect capacity display due to improperly used batteries: Only use alkaline (LR03/AAA) Risk of malfunction or damage due to leaking batteries:
- Remove batteries if the device will not be used for an extended period of time.
- Risk of malfunction or damage due to extreme temperatures: Protect the Barryvox® from extreme temperatures and direct sunlight during storage.
- Risk of malfunction due to electronic devices (e.g. cell phones, radios, headlamps, cameras, sports watches), metal parts (e.g. pocket knives, magnetic buttons) or another search device in the immediate vicinity: Keep your Barryvox® at least 20 cm away from such objects when on SEND and 50 cm away when on SEARCH, with electronic devices switched off.
- Risk of pacemaker malfunction due to proximity of Barryvox®: Follow the instructions of the respective manufacturer.

### **Technical specifications**

- Device: digital three-antenna device
- Transmission frequency: Avalanche transceiver: 457 kHz (international standard)
- Transmitting field strength / transmitting power: Avalanche transceiver: max. 7 dBµA/m (2.23 µA/m) at a distance of 10 m
- Power supply: 2 x LR03 1.5 V alkaline (AAA)
- Battery life with alkaline: approx. 450 h on SEND, min. 200 h on SEND and 1 h on SEARCH
- Max. range: up to 70 m
- Search strip width: 70 m
- Bluetooth: v5.1, 2.4 GHz to 2.4835 GHz, max. 5 dBm

- Operating temperature range: –25 to +45 °C
- Dimensions (L x W x D): 115 x 68 x 21 mm
- Weight: 180 g (incl. batteries)



— Disposal: At the end of its life, do not dispose of this product as regular waste. Instead, dispose of it at a disposal point for the recycling of electronic devices. Do not use damaged batteries.

## Contact

- Switzerland (Headquarters)
- Mammut Sports Group AG
- Birren 5, CH-5703 Seon
- +41 (0)62 769 81 81
- [info@mammut.com](mailto:info@mammut.com)
- Europe
- Mammut Sports Group GmbH
- Mammut Basecamp 1
- DE-87787 Wolfertschwenden
- +49 (0)8334 3620 0
- [germany@mammut.com](mailto:germany@mammut.com)
- North America
- Mammut Sports Group Inc.
- 458 Hurricane Lane
- Williston, US-VT 05495
- +1 800 451 5127
- [info@mammutusa.com](mailto:info@mammutusa.com)

## Further information:



- Barryvox® App

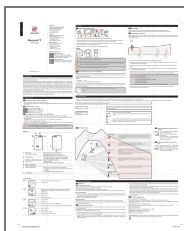
Barryvox® 2 Device configuration, Firmware updates, Barryvox® Training Park, Warranty extension



- [Barryvox.com](http://Barryvox.com)

Avalanche Courses, Manual, Equipment Support, Warranty extension

## Documents / Resources



[Mammut Barryvox S2 Avalanche Transceiver](#) [pdf] User Guide  
Barryvox S2 Avalanche Transceiver, Barryvox S2, Avalanche Transceiver, Transceiver

## References

- [User Manual](#)

### Manuals+, Privacy Policy

This website is an independent publication and is neither affiliated with nor endorsed by any of the trademark owners. The "Bluetooth®" word mark and logos are registered trademarks owned by Bluetooth SIG, Inc. The "Wi-Fi®" word mark and logos are registered trademarks owned by the Wi-Fi Alliance. Any use of these marks on this website does not imply any affiliation with or endorsement.