



# Mammotome AutoCore Single Insertion Core Biopsy System Instruction Manual

[Home](#) » [Mammotome](#) » Mammotome AutoCore Single Insertion Core Biopsy System Instruction Manual 

## Mammotome AutoCore Single Insertion Core Biopsy System



## Contents

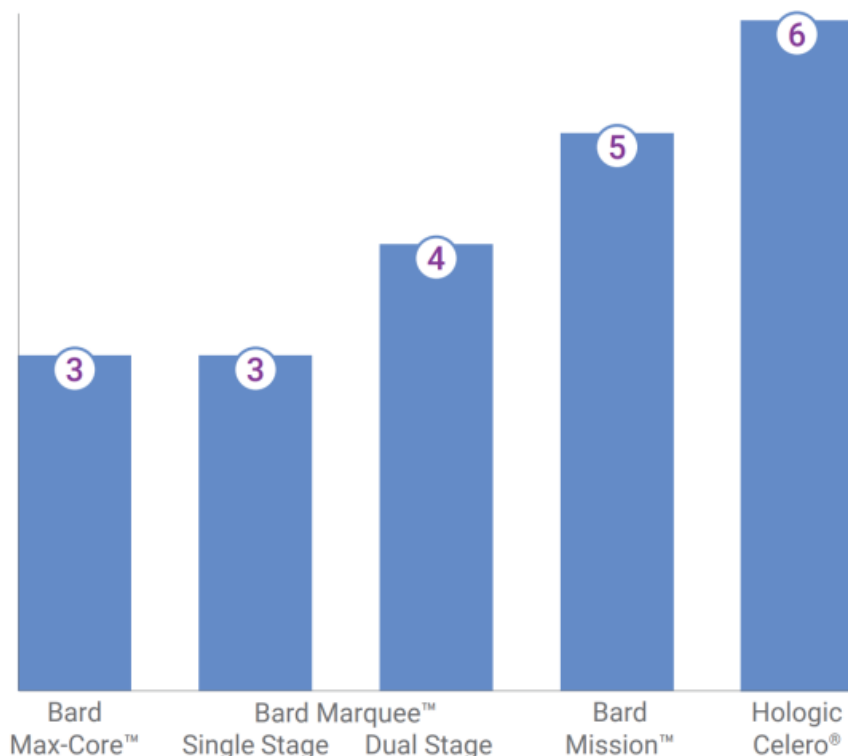
- 1 Introducing
- 2 Easy One-handed Use With No Manual Arming
- 1st
- 3 Clear Ultrasound Visibility
- 4 Real-time Tissue Visualization
- 5 Touchless Tissue Transfer 1st
- 6 Customer Support
- 7 Documents / Resources
  - 7.1 References
- 8 Related Posts

## Introducing

**Introducing the first ever, single insertion, spring-loaded core needle device.**

The Mammotome AutoCore™ device begins a new era of efficiency for ultrasound-guided breast biopsies. This device offers reduced procedure steps and physician procedure time versus Bard Marquee™, Hologic Celero®, and other market-leading, spring-loaded core needle or multipleinsertion devices.<sup>1,2</sup>

**How many procedure steps does the Mammotome AutoCore™ device save for each additional sample?**<sup>1</sup>



**Steps removed for each additional sample taken using the Mammotome AutoCore™ device: 1,3**

1. Remove device
2. Handle tissue sample
3. Manually arm device
4. Revisualize target tissue
5. Reinsert device



**The Mammotome AutoCore™ system also offers the following benefits:**

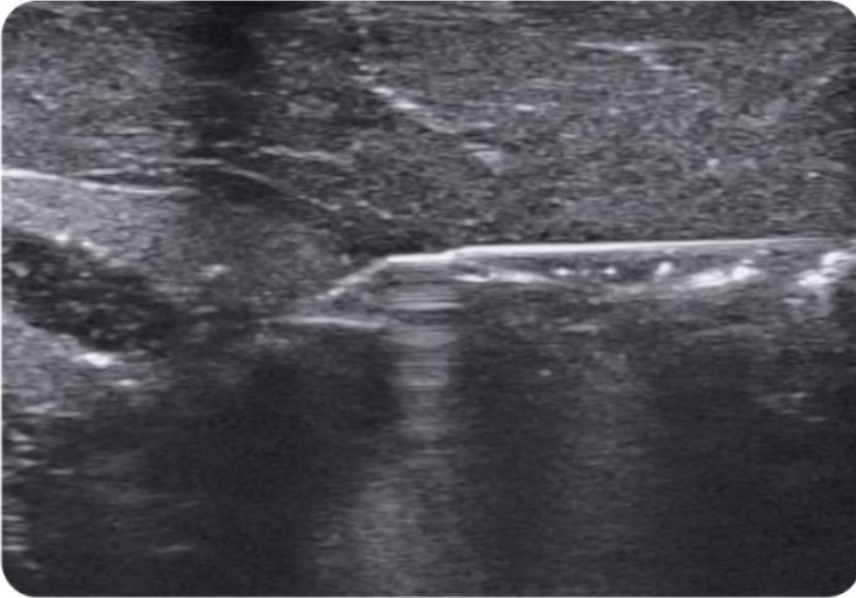
### **Easy One-handed Use With No Manual Arming 1st**

Ergonomic design has a single button to perform all device actions.



## **Clear Ultrasound Visibility**

Echogenic needle tip is easy to see under ultrasound.



## **Real-time Tissue Visualization**

Clear and illuminated specimen collection cup sits in front of your hand, for easy visualization of tissue samples.



## **Touchless Tissue Transfer 1st**

Removable specimen collection cup is designed for transfer of all specimens directly to formalin.



**1st** = A first for spring-loaded core needle devices



The Mammotome AutoCore™ device increases efficiency, improving the breast biopsy experience for both you and your patients!3

1. Based on IFU analysis in ultrasound-guided breast biopsy procedures. Total procedure steps savings based on biopsy procedure taking five tissue samples including setup and post-procedure steps.
2. On average, based on internal study using varied customer tissue handling techniques. Tissue handling techniques determined by user interviews.
3. As compared to market-leading, spring-loaded core needle or multiple-insertion devices.

Product may not be approved or available in your region. Please check with your local Mammotome representative.

© 2024 Devicor Medical Products, Inc. All rights reserved. Devicor and Mammotome are registered trademarks of Devicor Medical Products, Inc., in the USA and optionally in other countries. Mammotome AutoCore and Core like never before are trademarks of Devicor Medical Products, Inc., in the USA and optionally in other countries. Other logos, product and/or company names might be trademarks of their respective owners. MDM# 240595 Rev 10/24

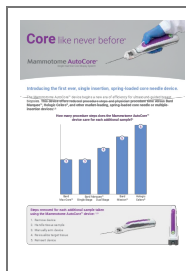
## Customer Support

[mammotome.com](https://mammotome.com) • 1-877-926-2666 • us.[customerservice@mammotome.com](mailto:customerservice@mammotome.com)



# Mammotome

## Documents / Resources



[Mammotome AutoCore Single Insertion Core Biopsy System](#) [pdf] Instruction Manual  
AutoCore™, AutoCore Single Insertion Core Biopsy System, AutoCore, Single Insertion Core Biopsy System, Insertion Core Biopsy System, Core Biopsy System, Biopsy System

## References

- [Mammotome: Care that Drives Decisions](#)
- [User Manual](#)

### Manuals+. [Privacy Policy](#)

This website is an independent publication and is neither affiliated with nor endorsed by any of the trademark owners. The "Bluetooth®" word mark and logos are registered trademarks owned by Bluetooth SIG, Inc. The "Wi-Fi®" word mark and logos are registered trademarks owned by the Wi-Fi Alliance. Any use of these marks on this website does not imply any affiliation with or endorsement.