



MALTEC SafeSensor1000 Soap Sensor User Guide

[Home](#) » [MALTEC](#) » MALTEC SafeSensor1000 Soap Sensor User Guide 

Contents

- [1 MALTEC SafeSensor1000 Soap Sensor](#)
- [2 Introduction](#)
- [3 Features/Specification](#)
- [4 Specification](#)
- [5 Installation Instructions](#)
- [6 Operation Instructions](#)
 - [6.1 Reset Feature](#)
- [7 LED indicator Operation](#)
 - [7.1 What To Do IF The Alarm Sounds](#)
- [8 Battery Replacement](#)
- [9 General Maintenance](#)
 - [9.1 Carbon Monoxide Safety Information](#)
- [10 CE declaration](#)
- [11 Documents / Resources](#)



MALTEC SafeSensor1000 Soap Sensor



Introduction

- Thank you for purchasing carbon monoxide alarm. This is one Single Station alarm. Please take a few minutes to thoroughly read this user's guide and save for future reference.

Features/Specification

Features:

- LCD displayer with a blue back ground light.
- Loud alarm.
- Permanent carbon monoxide sensor.
- Powered by 3 x 1.5V AA batteries.
- The alarm sound pattern is four short alarm beeps. The red LED will flash while in alarm mode.
- One 'chirp' every 30 seconds is an indication that the battery is low (need replacement) (green LED still flashes once every 30 seconds) or the unit is malfunctioning (green LED is out).
- Alarm memory feature: If the unit ever alarms, pressing the button, green LED will flashes once every second for one minutes and the peak alarm level will indicate on the LCD.
- Test/Reset button to test the unit electronics and verifies proper unit operational and reset the unit during CO alarm.
- Green and red LED light that indicate normal operation and alarm status.
- 3 digits LCD displayer is optional. "Err" on the LCD to indicate the unit is malfunctioning. "LB" on the LCD to indicate it low battery and need replacement. "999ppm" on the LCD to indicate CO level over 999ppm. If the CO leakage is less than 999ppm but over 30ppm, it would show its actual concentration. Blue back light will be lighted when pressing the test button or alarming.
- The unit will sound "chirp" and red LED flashes once as power up, with "888" displays on the LCD for 2 seconds. Then pressing the button, the unit will sound 4 beeps every 5 seconds twice with red LED flashes.

During the self test mode, "000" displays on the LCD for 3 minutes and then enter in normal operation mode.

- **Power saving feature:** The alarm sound pattern is 4 beeps every 5 seconds for the first 4 minutes. In 4 minutes, it will change to 4 beeps every minute to save the battery.
- **Green LED:** The green LED flashes every 30 seconds to indicate the unit is operating properly.
- **Red LED:** When a dangerous level of carbon monoxide is detected the red LED will flashes and the alarm pattern will sound.
- The CARBON MONOXIDE (CO) alarm monitors the air for the presence of CO. the alarm will sound and be accompanied by the flashing red LED light when there are high levels of CO present.
- **CAUTION:** This alarm will only indicate the presence of monoxide at the sensor. Carbon monoxide gas may present at other area.

Specification

- **Power Supply:** 3 AA size 1.5V batteries

Sensitivity & Time:

- **30ppm**, alarms within 120 minutes
- **50ppm**, alarms within 60~90 minutes
- **100ppm**, alarms within 10~40 minutes
- **300ppm**, alarms within 3 minutes
- **Standby Current:** <50Ua (without LCD); <200uA (With LCD)
- **Alarm Current:** 75mA
- **Operation Ambient Condition:** 15~35°C, 20~90R R.H.

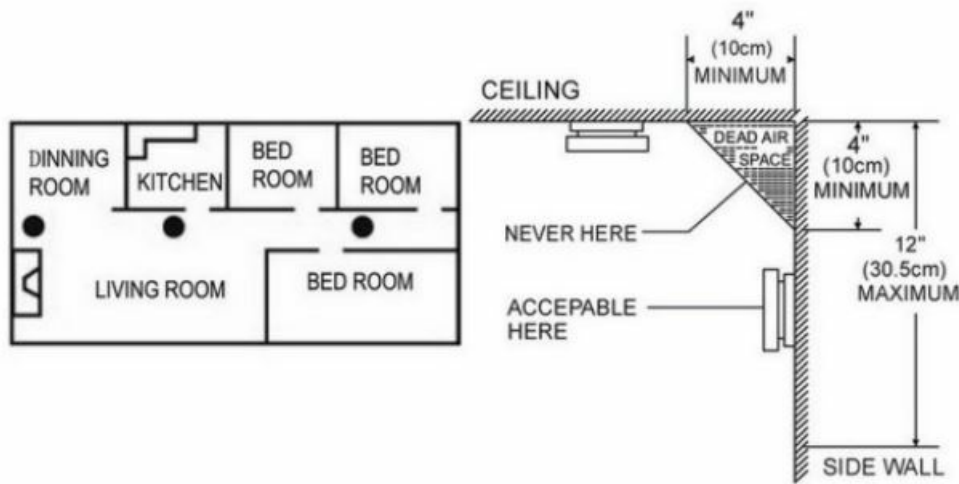
Installation Instructions

Step 1 Installation Guide:

IMPORTANT: THIS ALARM MUST BE MOUNTED ON A WALL. INSTALL ONLY AS DETAILED!

A. Recommended Installation Locations:

- We recommend the installation of a CO Alarm in the following locations.
- For maximum protection we suggest an alarm be installed on each level of a multilevel home including every bedroom, hallways, finished attics and basements. Put alarm at both ends of bedroom hallway or large room if hallway or room is more than 30ft. (9,1m) long. If you have only one alarm, ensure it is placed in the hallway outside of the main sleeping area, or in the main bedroom. Verify the alarm can be heard in all sleeping areas.
- Locate an alarm I every room where someone sleeps with the door closed. The closed door may prevent the alarm from waking the sleeper. Mounting the alarm on the ceiling in the center of the room places it closest to all points in the room. Ceiling mounting is preferred in ordinary residential construction. When mounting an alarm on the ceiling, locate it at a minimum of 4" (10cm) from the side wall (see Diagram A). if installing the alarm on the wall, at a minimum of 4" (10 cm) and a maximum of 12" (30.5 cm) below the ceiling (see Diagram below).



B. Where Not to Install:

- Do not install in garages, kitchens, furnace rooms or bathrooms! INSTALL AT LEAST 15 FEET AWAY FROM ANY FUEL BURNING APPLIANCE.
- Do not install within 3ft (0.9m) of the following: The door to a kitchen, or a bathroom that contains a tub or shower, forced air ducts used for heating or cooling, ceiling or whole house ventilating fans, or other high air flow areas. Avoid excessively dusty, dirty or greasy areas. Dust, grease or household chemicals contaminate the alarm's sensors, causing it to not operate properly.
- Place the alarm where drapes or other objects will not block the sensor. CO must be able to reach the sensors to accurately detect these conditions. Do not install in peaks of vaulted ceiling, "A" frame ceilings or gabled roofs. Keep out of damp and humid areas. Install at least one foot away from fluorescent lights, electronic noise may cause nuisance alarms. Extreme temperatures will affect the sensitivity of the CO Alarm. Do not install in areas where the temperature is colder than 40 degrees Fahrenheit (4.4 Celsius) or hotter than 100 degrees Fahrenheit (37.8 Celsius). Place away from doors and windows that open to the outside.

Step 2 Mounting Instructions:

- Remove the mounting bracket from the back of the alarm by twisting the alarm.
- After selecting the proper location for your CO Alarm, drilling two 5.0mm holes in the ceiling or wall vertically with the distance of 60mm and inserting one plastic insert into the holes, then attaching the bracket to the plastic insert with the arrow down to the ground and screwing tightly two screws in the two inserts.
- Matching the arrow on the back of the alarm with the arrow on the bracket to snap the alarm on the bracket by twisting the alarm.

Step 3 Testing the Alarm

CAUTION: Due to the loudness of the alarm, always stand an arms length away from the unit when testing.

The test/reset button has two purposes. It tests the unit's electronics and reset the unit during CO alarm. After installation, TEST THE UNITS ELECTRONICS by pressing the test button for five seconds. A series of beeps will sound. If the unit chirps and red LED flashes once every 30 seconds with green LED not flashing once every 30 seconds, that means the unit is malfunctioning. You need to return the unit to our agent for repairing. If the alarm is sounding, pressing the button will silence the alarm for several minutes. After the duration, if the CO condition that caused the alert continues, the alarm will reactivate. The duration spans from 2 minutes to 6

minutes. The unit needs to be tested weekly! If at anytime it does not perform as described, verify power is connected correctly and that the battery doesn't need replacing. Clean dust and other buildup off the unit. If it still doesn't operate properly call our agent.

Operation Instructions

Test Features

Press the test button for several seconds to test unit's electronics. The alarm will sound. If the unit chirp once every 30 seconds with green LED out or "Err" is displaying on the LCD, that means the unit is malfunctioning. You must return the unit to our agent for repairing.

Reset Feature

- If the alarm is sounding, pressing the button will silence the alarm for several minutes. After the duration, if the CO condition that caused the alert continues, the alarm will reactivate. If the CO level keeps from 70ppm to 200ppm, the duration is around 5 minutes. If the CO level keeps over 200ppm, the duration is zero, i.e. the unit will sound soon. If the CO level keeps below 70ppm, the unit will not reactivate longer.

Alarm Memory Feature

- If you leave home for long time and during the period the unit ever alarms, after you return and press the button for several seconds, green LED will flashes once every seconds and the peak alarm level will indicate on the LCD to alert you there is one CO alarm occurs. You should check the possible CO source and resolve it. Pressing the button again, the unit will return to normal condition or return to normal condition in one minute automatically.

LED indicator Operation

Red LED

- Red Led will flash in conjunction with the alarm beep. Therefore, the red LED will flash during a CO alarm, a low battery mode chirp and a malfunction status.
- As you install the battery on the unit, the unit will sound 'chirp' to indicate the battery installed properly.

Green LED

- Green LED flashes once every 30 seconds to indicate proper operation and it is out to indicate malfunctioning.

What To Do IF The Alarm Sounds

IF alarm sounds:

1. Call your emergency services.
2. Immediately move to fresh air – outdoors or by an open door/window. Do a head count to check that all persons are accounted for. Do not re-enter the premises nor move away from the open door/window until the emergency services responders have arrived, the premises have been aired out, and your alarm remains in its normal condition.

Never restart the source of a CO problem until it has been fixed. NEVER IGNORE THE ALARM!

- The CO sensor sensitivity and setting is:
- **30ppm**, alarms within 120 minutes
- **50ppm**, alarms within 60~90 minutes
- **100ppm**, alarms within 10~40 minutes
- **300ppm**, alarms within 3 minutes
- This carbon monoxide alarm is designed to detect carbon monoxide gas from ANY source of combustion. It is not designed to detect any other gas.
- Fire departments, most utility companies will perform CO inspections, some may charge for this service.

Battery Replacement

- If battery failure is detected the unit will “chirp” one time. This cycle will occur once every 30 seconds.
- **CAUTION:** YOUR ALARM IS SEALED AND THE COVER IS NOT REMOVABLE!
- To replace the battery you must first remove the alarm from the screw then open the battery door, then you can directly replace the battery.
- After installing or changing the battery, reinstall your alarm. Test your alarm by using the test button and check that the red LED flashing once every 30 seconds.
- Replace battery with qualified brands.
- **CAUTION:** Don't press test/reset button while installing batteries. Otherwise, the unit will not work.

General Maintenance

To keep your CO Alarm in good working order, please follow these simple steps:

- Verify the unit's alarm and LED light operation by pushing the test button once a week.
- Remove the unit from mounting bracket and vacuum the alarm cover and vents with a soft brush attachment once a month to remove dust and dirt.
- **REINSTALL IMMEDIATELY AFTER CLEANING AND THEN TEST USING THE TEST/RESET BUTTON!**
- Never use detergents or other solvents to clean the unit.
- Avoid spraying air fresheners, hair spray, or other aerosols near the CO Alarm.
- Do not paint the unit. Paint will seal the vents and interfere with the sensor's ability to detect CO. never attempt to disassemble the unit or clean inside. This action will void your warranty.

WARNING: reinstall the CO Alarm as soon as possible to assure continuous protection.

- When household cleaning supplies or similar contaminants are used, the area must be well ventilated. The following substances can affect the CO sensor: Methane, propane, iso-butane, iso-propanol, ethyl acetate, hydrogen sulfide dioxies, and alcohol based products, paints, thinner, solvents, adhesives, hair spray, after shave, perfume, and some cleaning agents.

Carbon Monoxide Safety Information

Symptoms of CO poisoning

- Initial carbon monoxide poisoning symptoms are similar to the flu with no fever and can include dizziness, severe headaches, nausea, vomiting and disorientation. Everyone is susceptible but experts agree that unborn babies, pregnant women, senior citizens and people with heart or respiratory problems are especially vulnerable. If symptoms of carbon monoxide poisoning are experienced seek medical attention immediately. CO poisoning can be determined by a carboxyhemoglobin test.
- The following symptoms are related to CARBON MONOXIDE POISONING and should be discussed with ALL members of the household:
- **Mild Exposure:** Slight headache, nausea, vomiting, fatigue (often described as “Flu-like” symptoms).
- **Medium Exposure:** Severe throbbing headache, drowsiness, confusion, fast heart rate.
- **Extreme Exposure:** Unconsciousness, convulsions, cardiorespiratory failure, death.

Disposal of electrical equipment

The symbol of the crossed-out wheeled waste container placed on the products informs that used electrical and electronic equipment (hereinafter also “waste equipment” or “electro-waste”) may not be disposed of with municipal waste. By throwing e-waste into the container, you pose a threat to the environment. Used equipment may contain substances (e.g. lead, cadmium, chromium, bromine, mercury, freon) that are dangerous to human health and life and to the environment. By sorting and handing over used equipment for processing, recovery, recycling and disposal, you protect the environment against pollution and contamination, you contribute to reducing the use of natural resources and lowering the production costs of new equipment.



CE declaration

Malis B. Machoński sp. k. Declares that the Maltec Carbon Monoxide Sensor SafeSensor1000 device meets all the requirements of the LVD 2014/35/EU, EC 2014/30/EU directives and meets the following standards:

- **IEC62321-1:2013**
- **IEC62321-3-1:2013**
- **IEC62321-4:2013+A1:2017**
- **IEC62321-5:2013**
- **IEC62321-6:2015**
- **IEC62321-7-1:2015**
- **IEC62321-7-2:2017**
- **IEC62321-8:2017**
- **EN50291-1:2018**
- **EN 55014-1:2017**
- **EN 61000-3-2:2019**
- **EN 61000-3-3:2013+A1:2019**
- **EN 50130-4:2011+A1:2014**
- **EN 61000-4-2:2009**
- **EN 61000-4-3:2019**
- **EN 61000-4-4:2012**
- **EN 61000-4-5:2014+A1:2017**
- **EN 61000-4-6:2014/AC:2015**
- **EN 61000-4-11:2019**
- **Importer:** Malis B. Machoński sp. k. ul. Zbożowa 2E, Wysogotowo 62-081 Przeźmierowo www.maltec.pl


Bartosz Machoński

Documents / Resources

  <small>Czujnik Ciężko Tlenku Węgla SafeSensor1000 Instrukcja Obsługi</small>	<p>MALTEC SafeSensor1000 Soap Sensor [pdf] User Guide SafeSensor1000 Soap Sensor, SafeSensor1000, Soap Sensor, Sensor</p>
--	---

Manuals+.