

Makita
PF400MP Cordless
Multi Function
Power Head



makita PF400MP Cordless Multi Function Power Head Instruction Manual

[Home](#) » [Makita](#) » makita PF400MP Cordless Multi Function Power Head Instruction Manual 

Contents

- 1 Makita PF400MP Cordless Multi-Function Power Head
- 2 Product Usage Instructions
- 3 INSTALLATION INSTRUCTIONS
- 4 SPECIFICATIONS
- 5 Declarations of Conformity
- 6 Declaration of Conformity (For UK)
- 7 Pump Safety Instructions
- 8 PARTS DESCRIPTION
- 9 ASSEMBLY
- 10 OPERATION
- 11 MAINTENANCE
- 12 Cleaning the water inlet
- 13 TROUBLESHOOTING
- 14 OPTIONAL ACCESSORIES
- 15 Frequently Asked Questions
- 16 Documents / Resources
 - 16.1 References
- 17 Related Posts



Makita PF400MP Cordless Multi-Function Power Head



Specifications

- **Model:** PF400MP
- **Capacities:**
 - Maximum lift height (High speed): 14.0 m
 - Maximum lift height (Medium speed): 11.0 m
 - Maximum lift height (Low speed): 6.0 m
 - Maximum flow rate (High speed): 145 l/min
 - Maximum flow rate (Medium speed): 140 l/min
 - Maximum flow rate (Low speed): 95 l/min
- Maximum water temperature
- Overall length
- Net weight

Product Usage Instructions

Warnings and Safety

WARNING:

Never use the attachment with a non-approved power unit. Non-approved combinations may cause serious injury.

Intended Use:

This attachment is designed for pumping water only with an approved power unit. Please do not use it for other purposes as it may cause serious injury.

Symbols and Safety Precautions

- Take particular care and attention.
- Read the instruction manual.
- Wear a helmet, goggles, and ear protection.
- Wear protective gloves.

- Wear sturdy boots with nonslip soles. Steel-toed safety boots are recommended.
- Do not use potable water.

Declarations of Conformity

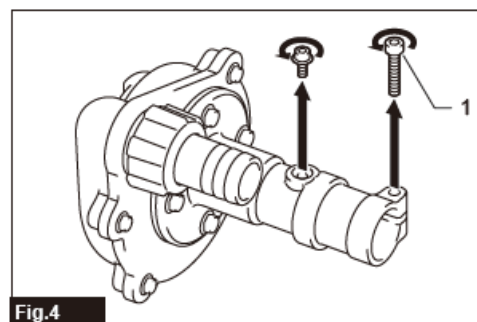
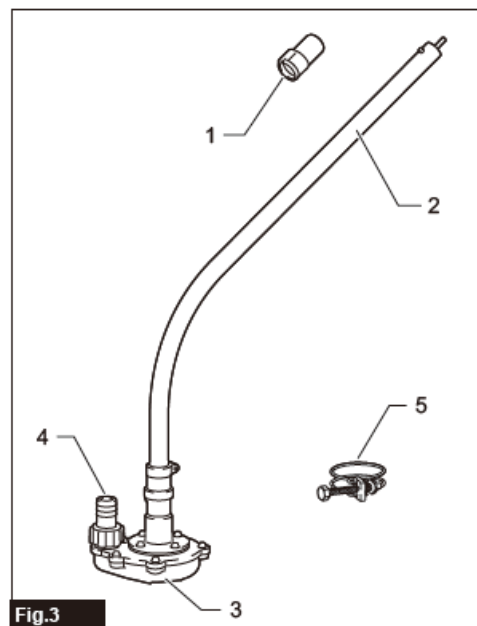
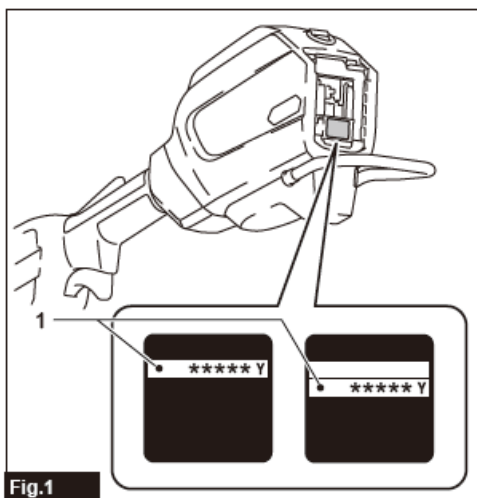
For European countries:

Do not pour or splash water toward bystanders, animals, power units, or energized parts.

Declaration of Conformity (For UK):

The manufacturer, Makita Europe N.V., authorizes Kazuhisa Makino to compile the technical file and declares that the product(s) meets UK regulations.

INSTALLATION INSTRUCTIONS



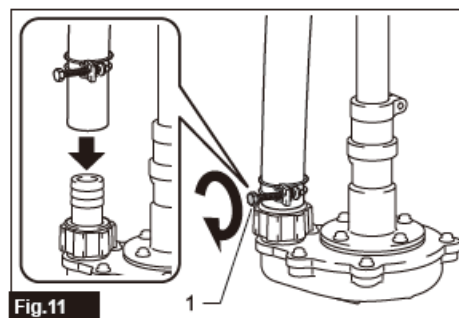
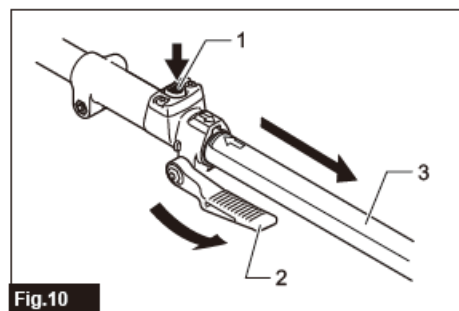
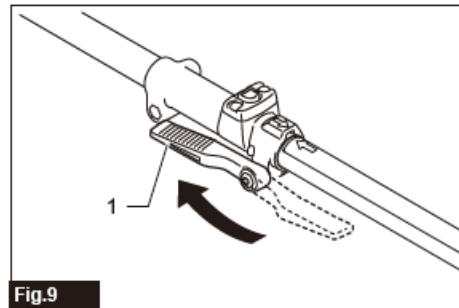
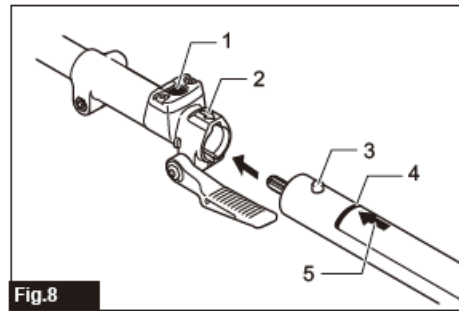
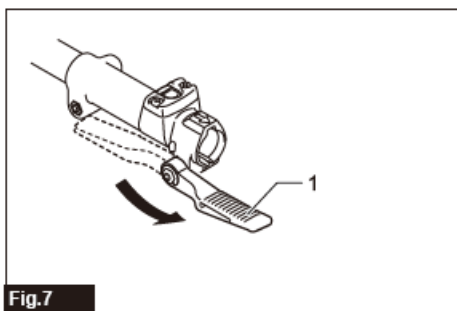
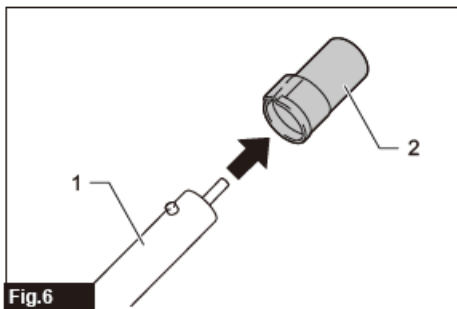
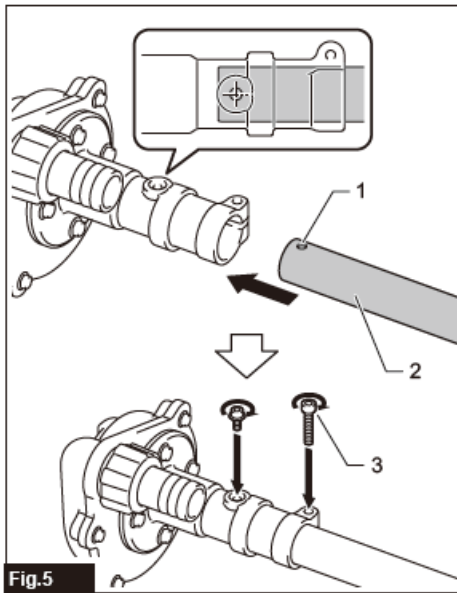




Fig.12

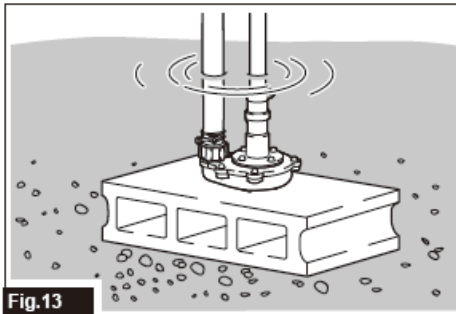


Fig.13

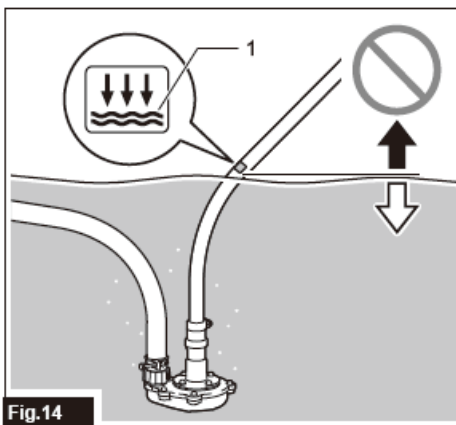


Fig.14

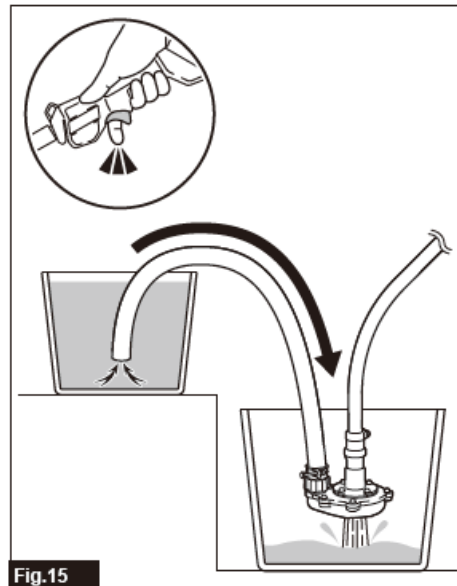


Fig.15

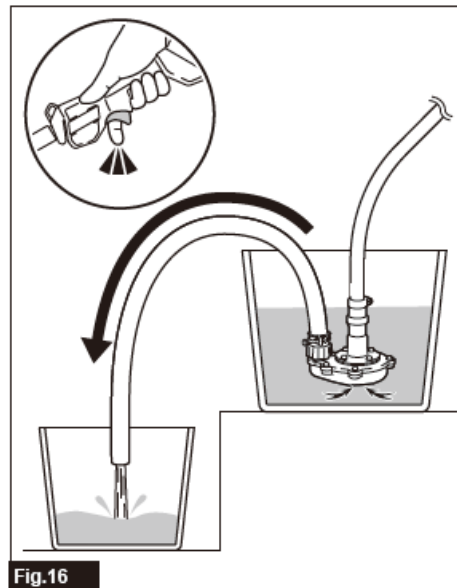
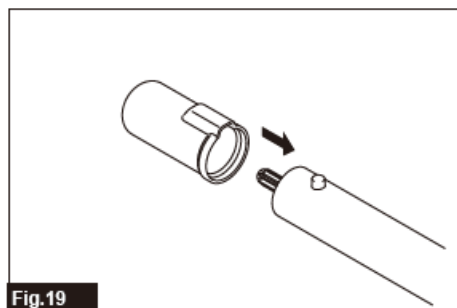
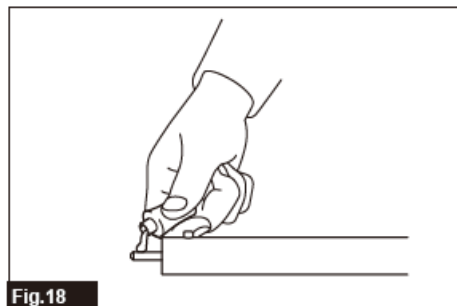
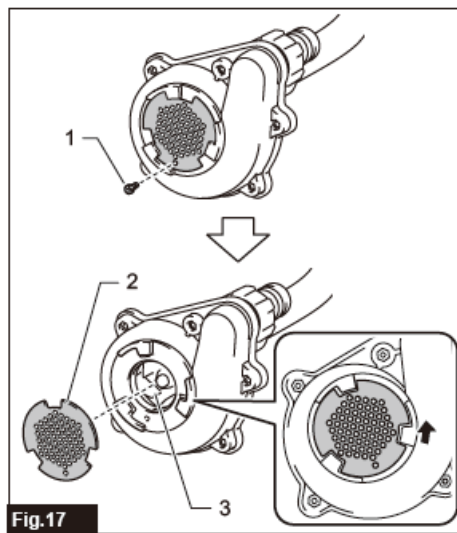


Fig.16



WARNING

- This appliance is designed to be used in commercial areas.
- This appliance shall not be used by children.
- Cleaning and user maintenance shall not be carried out by children.
- Children shall not play with the appliance.
- Appliances can be used by persons with reduced physical, sensory, or mental capabilities or lack of experience and knowledge if they have been given supervision or instruction concerning the use of the appliance in a safe way and if they understand the hazards involved.
- Always remove the battery from the appliance before assembling, disassembling, cleaning, or maintenance and when replacing parts.
- Pumps without indication that they are protected against the effect of freezing shall not be left outside during freezing weather conditions.
- See the instruction manual of the power unit for the type reference of the battery.
- See the instruction manual of the power unit for how to remove or install the battery.
- When disposing of the battery cartridge, remove it from the tool and dispose of it in a safe place. Follow your local regulations relating to the disposal of batteries.
- If the tool is not used for a long period, the battery must be removed from the tool.

- Do not short the battery cartridge.
- See the chapter “MAINTENANCE” for the appropriate details of precautions during user maintenance.

SPECIFICATIONS

Model:		PF400MP
Capacities *1	Maximum lift height (High speed)	14.0 m
	Maximum lift height (Medium speed)	11.0 m
	Maximum lift height (Low speed)	6.0 m
	Maximum flow rate (High speed)	145 l/min
	Maximum flow rate (Medium speed)	140 l/min
	Maximum flow rate (Low speed)	95 l/min
Capacities *2	Maximum lift height (High speed)	11.0 m
	Maximum lift height (Low speed)	8.0 m
	Maximum flow rate (High speed)	120 l/min
	Maximum flow rate (Low speed)	100 l/min
Capacities *3	Maximum lift height (High speed)	15.0 m
	Maximum lift height (Medium speed)	11.0 m
	Maximum lift height (Low speed)	6.0 m
	Maximum flow rate (High speed)	150 l/min
	Maximum flow rate (Medium speed)	140 l/min
	Maximum flow rate (Low speed)	95 l/min
Maximum water temperature		40 °C
Overall length		725 mm
Net weight		1.0 kg

1. Capacities of pump attachment in conjunction with DUX60 Cordless Multi Function Power Head
2. Capacities of pump attachment in conjunction with DUX18 Cordless Multi Function Power Head
3. Capacities of pump attachment in conjunction with UX01G Cordless Multi Function Power Head
4. The value for maximum flow rate is the value when the lift height is 0 m.

- Due to our continuing program of research and development, the specifications herein are subject to change without notice.
- Specifications may differ from country to country.

Approved power unit

This attachment is approved for use only with the following power unit(s):

- DUX60 Cordless multi-function power head
- DUX18 Cordless multi-function power head
- UX01G Cordless multi-function power head

WARNING:

Never use the attachment with the non-approved power unit. Non-approved combinations may cause serious injury.









NOTE:

In European countries (including the UK and Russia), Australia, New Zealand, Korea, China, South Africa, etc. which have EMI (electromagnetic interference) regulations, this attachment cannot be used with UX01G whose serial number is a smaller number than 30291 ending with Y. If the serial number of UX01G matches any of the following conditions, it can be used with this attachment in those countries as well:

- 30291Y or a larger number than 30291 ending with Y
- Any number ending with an alphabet suffix other than Y
- Serial No. Is indicated on the battery terminal as illustrated. The design of the label can be different.

Fig.1: 1. Serial number

Symbols

-  Take particular care and attention.
-  Read the instruction manual.
-  Wear a helmet, goggles, and ear protection.
-  Wear protective gloves.
-  Wear sturdy boots with nonslip soles. Steel-toed safety boots are recommended.
-  Do not use potable water.
-  Maximum water temperature is 40°C.
-  Do not pour or splash water toward bystanders, animals, power units, or energized parts.

Only for EU countries

- Due to the presence of hazardous components in the equipment, waste electrical and electronic equipment, accumulators and batteries may hurt the environment and human health. Do not dispose of electrical and electronic appliances or batteries with household waste!
- By the European Directive on waste electrical and electronic equipment and accumulators and batteries and waste accumulators and batteries, as well as their adaptation to national law, waste electrical equipment, batteries, and accumulators should be stored separately and delivered to a separate collection point for municipal waste, operating by the regulations on environmental protection.

This is indicated by the symbol of the crossed-out wheeled bin placed on the equipment.

Intended use

This attachment is designed for only the purpose of pumping water in conjunction with an approved power unit. Never use the attachment for other purposes. Abusing the attachment may cause serious injury.

Declarations of Conformity

- For European countries only

- **We as the manufacturers:**

Makita Europe N.V., Business address: Jan-Baptist Vinkstraat 2 3070 Kortenberg BELGIUM. Authorize Kazuhisa Makino for the compilation of the technical file and declare under our sole responsibility that the product(s);

- **Designation:**

Pump Attachment. Designation of

- **Type(s):**

PF400MP.

- Fulfills all the relevant provisions of 2006/42/EC and also fulfills all the relevant provisions of the following EC/EU Directives: 2000/14/EC and are manufactured by the following Harmonised Standards: EN 60335-1:2012+A11:2014+A13:2017+A1:2019+ A14:2019+A2:2019+A15:2021+A16:2023, EN IEC 60335-2-41:2021+A11:2021.
- Place and date of declaration: Kortenberg, Belgium. 1. 4. 2025
- Responsible person: Kazuhisa Makino, Director – Makita Europe N.V.

Declaration of Conformity (For UK)

- **For the UK only**

We as the manufacturers: of Makita Europe N.V.,

- **Business address:**

Jan-Baptist Vinkstraat 2 3070 Kortenberg BELGIUM. Authorize Kazuhisa Makino for the compilation of the technical file and declare under our sole responsibility that the product(s); Designation: Pump Attachment. Designation of

- **Type(s):**

PF400MP. Fulfills all the relevant provisions of S.I. 2008/1597 (as amended) and also fulfills all the relevant provisions of the following UK Regulations: S.I. 2001/1701 (as amended) and are manufactured by the following Designated

- **Standards:**

EN 60335-1:2012+A11:2014+A13:2017+A1:2019+A 14:2019+A2:2019+A15:2021+A16:2023, EN IEC 60335-2-41:2021+A11:2021.

- **Place and date of declaration:**

Kortenberg, Belgium. 1. 4. 2025 Responsible person: Kazuhisa Makino, Director –

- **Makita Europe N.V.**

Importer: Makita (UK) Limited, Michigan Drive, Tongwell, Milton Keynes, Buckinghamshire, MK15 8JD, UK



SAFETY WARNINGS

Pump Safety Instructions

WARNING:

Read all safety warnings, instructions, illustrations, and specifications provided with this machine as well as the instruction manual of the power unit before using. Failure to follow all instructions listed below may result in electric shock, fire, and/or serious injury to the operator and/ or bystanders.

Save all warnings and instructions for future reference

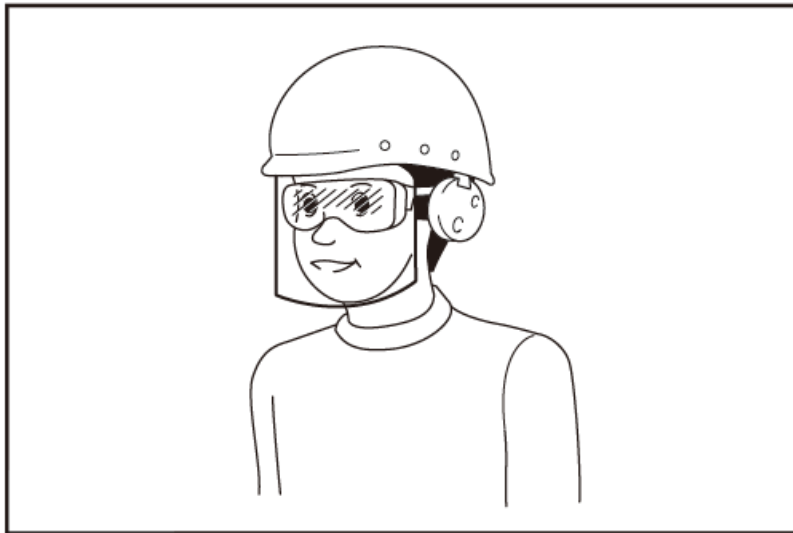
The terms “pump” and “machine” in the warnings and precautions refer to the combination of the attachment and the power unit.

Training

1. Read the instructions carefully. Be familiar with the controls and the correct use of the machine.
2. Never allow children, persons with reduced physical, sensory, or mental capabilities or lack of experience and knowledge, or people unfamiliar with these instructions to use the machine. Local regulations may restrict the age of the operator.
3. Never operate the machine while people, especially children, or pets are nearby.
4. Keep in mind that the operator or user is responsible for accidents or hazards occurring to other people or their property.

Preparation

1. Always wear substantial footwear and long trousers while operating the machine.
2. Do not wear loose clothing or jewelry that can be drawn into the water inlet. Keep long hair away from the water inlets.
3. Always wear protective goggles to protect your eyes from injury when using power tools. The goggles must comply with ANSI Z87.1 in the USA, EN 166 in Europe, or AS/NZS 1336 in Australia/New Zealand. In Australia/New Zealand, it is legally required to wear a face shield to protect your face, too. It is an employer's responsibility to enforce the use of appropriate safety protective equipment by the tool operators and by other persons in the immediate working area



4. To prevent dust irritation the wearing of a face mask is recommended.
5. While operating the machine, always wear non-slip and protective footwear. Non-skid, closed-toed safety boots, and shoes will reduce the risk of injury.
5. Wear ear protection, such as ear muffs. Noise exposure can cause hearing loss.
6. Wear protective gloves.

Operation

1. Before the operation, make sure that there are no sharp objects in the work area that could damage the hose.
2. Do not pour or splash water toward bystanders, animals, power units, or energized parts.
3. Do not use the pump for potable water.
4. Do not pump corrosive chemicals or flammable liquids
5. Clear the area of children, bystanders, and pets. At a minimum, keep all children, bystanders, and pets outside a 5 m radius.
6. Switch off the machine remove the battery cartridge, and make sure that all moving parts have come to a complete stop
 - whenever you leave the machine.
 - Before clearing blockages.
 - Before checking, cleaning, or working on the machine.
 - if the machine starts to vibrate abnormally
7. Operate the machine only in daylight or in good artificial light.
8. Do not overreach and keep proper balance and footing at all times.
9. Always be sure of your footing on slopes.
10. Operate the machine in a recommended position and on a firm surface.
11. Do not operate the machine in high places.
12. If the machine strikes any foreign objects or if you find any abnormality such as unusual noise or vibration with the machine, immediately switch off the machine to stop it. If the machine is damaged, ask Makita Authorized Service Centers for repair.
13. Prevent unintentional starting. Ensure the switch is in the off-position before inserting the battery cartridge, picking up, or carrying the machine. Carrying the machine with your finger on the switch or energizing the machine that has the switch on invites accidents.
14. Before assembling or adjusting the machine, switch off the machine and remove the battery cartridge.

15. Wear the personal protective equipment before starting the machine.
16. Before starting the machine, inspect the machine for damages, loose screws/nuts, or improper assembly.
Check all switches for easy action. Clean and dry the handles.
17. Never attempt to start the machine if the machine or hose is damaged or not fully assembled.
18. Adjust the shoulder harness and hand grip to suit the operator's body size.
19. During the operation, use the shoulder harness.
20. Keep the machine on your right side firmly. ► Fig.2

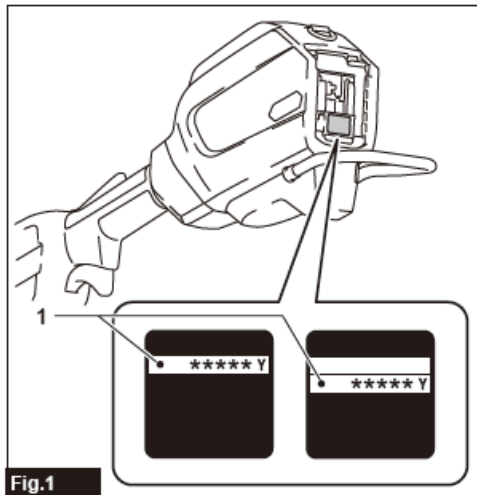


Fig.1



Fig.2

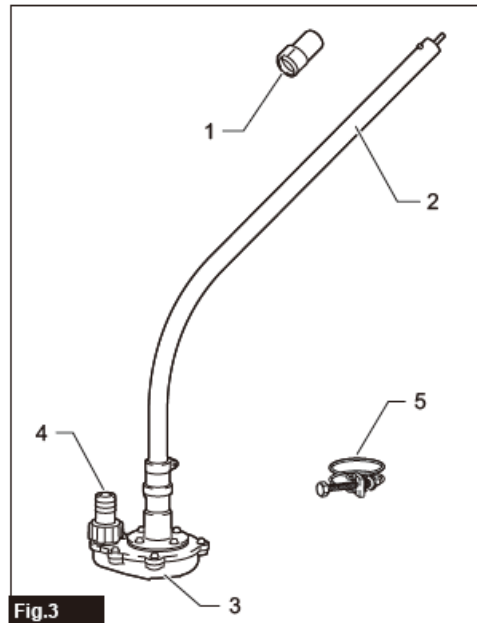


Fig.3

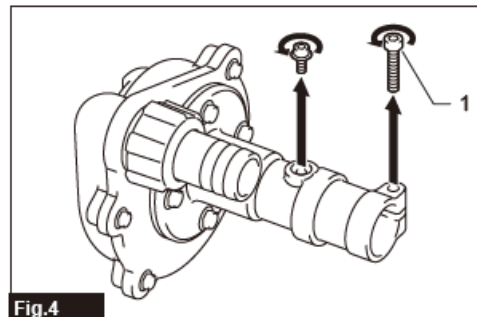


Fig.4

21. Hold the front handle with the left hand and the rear grip with the right hand, no matter whether you are a right-hander or left-hander. Wrap your fingers and thumbs around the handles.
22. Never attempt to operate the machine with one hand. Loss of control may result in an injury.
23. Follow the instruction manual of the power unit for proper use.
24. Refer to the instruction manual of the power unit for how to start and control the machine.
25. During operation always hold the tool with both hands. Never hold the tool with one hand during use.
26. Do not operate the tool in bad weather or if there is a risk of lightning.
27. Before operation, make sure that the shoulder harness is properly attached to the tool.
28. Do not submerge the machine in water or place the machine on a wet surface.
29. Do not leave the tool unattended outdoors in the rain.
30. During operation or while moving your operating position, be careful not to trip over the hoses or pipes at your feet.
31. When you use the machine on muddy ground, wet slopes, or slippery places, pay attention to your footing.
32. **Transportation**
Stop the machine during transportation. Otherwise, unintentional start-up may cause injury.
33. **Vibration**

Exposing excessive vibration injures the blood vessels or the nervous system of the operator and causes the following symptoms in the fingers, hands, or wrists: “Falling asleep” (numbness), tingling, pain, stabbing sensation, alteration of skin color or the skin. If any of these symptoms occur, see a physician. To reduce the risk of “white finger disease”, keep your hands warm during operation and maintain the machine and accessories.

Maintenance and storage

1. Keep all nuts, bolts, and screws tight to be sure the machine is in safe working condition.
2. If the parts are worn or damaged, replace them with parts provided by Makita.
3. Store the machine in a dry place out of the reach of children.
4. When you stop the machine for inspection, servicing, or storage, switch off the machine make sure that all moving parts come to a complete stop, and remove the battery cartridge.
5. Always clean dust and dirt off the equipment. Never use gasoline, benzene, thinner, alcohol, or the like for the purpose. Discoloration, deformation, or cracks of the plastic components may result.
6. Do not attempt any maintenance or repair not described in this instruction manual or the instruction manual of the power unit. Ask our authorized service center for such work.
7. Follow instructions for lubricating and changing accessories.
8. Always use genuine spare parts and accessories only. Using parts or accessories supplied by a third party may result in equipment breakdown, property damage, and/or serious injury.
9. Request our authorized service center to inspect and maintain the machine at regular intervals.
10. Before storing the machine, perform full cleaning and maintenance. Remove the battery cartridge.
11. Do not prop the equipment against something, such as a wall. Otherwise, it may fall suddenly and cause an injury.

Battery tool use and care

1. Recharge only with the charger specified by the manufacturer. A charger that is suitable for one type of battery pack may create a risk of fire when used with another battery pack.
2. Use power tools only with specifically designated battery packs. Use of any other battery packs may create a risk of injury and fire.
3. When the battery pack is not in use, keep it away from other metal objects, like paper clips, coins, keys, nails, screws, or other small metal objects, that can make a connection from one terminal to another. Shorting the battery terminals together may cause
4. burns or a fire.
5. Under abusive conditions, liquid may be ejected from the battery; avoid contact. If contact accidentally occurs, flush with water. If liquid acts on the eyes, additionally seek medical help. Liquid ejected from the battery may cause irritation or burns.
6. Do not use a battery pack or tool that is damaged or modified. Damaged or modified batteries may exhibit unpredictable behavior resulting in an explosion or risk of injury.
7. Do not expose a battery pack or tool to fire or excessive temperature. Exposure to fire or temperature above 130 °C may cause an explosion.
8. Follow all charging instructions and do not charge the battery pack or tool outside the temperature range specified in the instructions. Charging improperly or at temperatures outside the specified range may damage

the battery and increase the risk of fire.

Electrical and battery safety

1. Do not dispose of the battery(ies) in a fire. The cell may explode. Check with local codes for possible special disposal instructions.
2. Do not open or mutilate the battery(ies). Released electrolyte is corrosive and may cause damage to the eyes or skin. It may be toxic if swallowed.
3. Do not charge the battery in rain, or wet locations.
4. Do not charge the battery outdoors.
5. Do not handle chargers, including charger plugs, and charger terminals with wet hands.
6. Do not replace the battery in the rain.
7. Do not replace the battery with wet hands.
8. Do not replace the battery in the puddle or on a wet surface.

Service

1. Have your power tool serviced by a qualified repair person using only identical replacement parts. This will ensure that the safety of the power tool is maintained.
2. Never service damaged battery packs. Service of battery packs should only be performed by the manufacturer or authorized service providers.

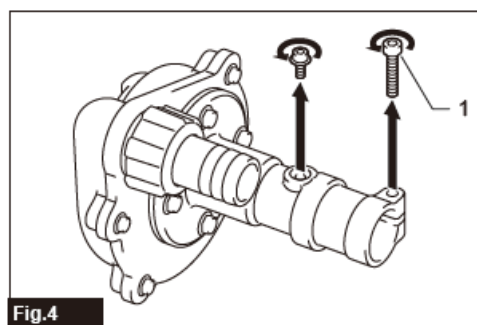
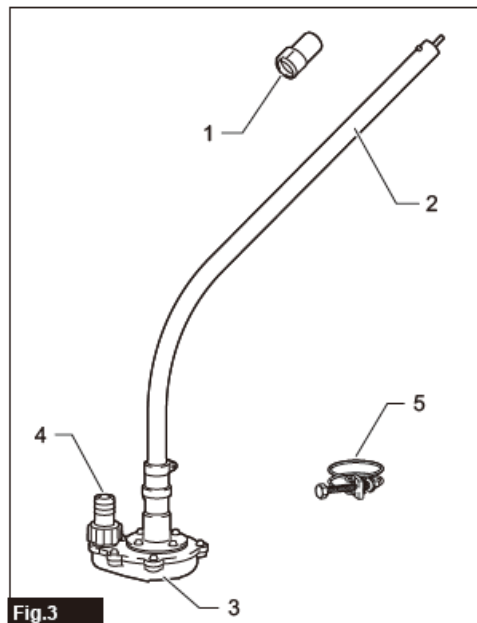
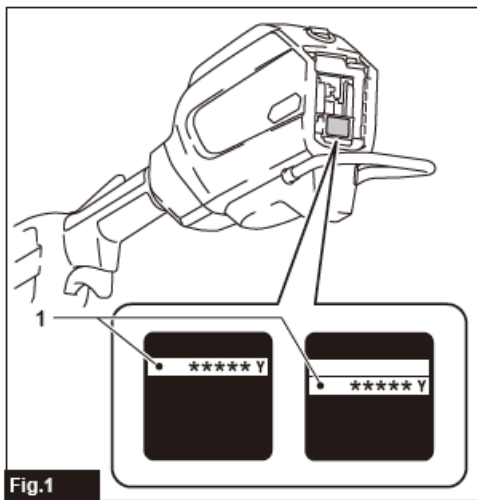
WARNING:

DO NOT let comfort or familiarity with the product (gained from repeated use) replace strict adherence to safety rules for the subject product.

MISUSE or failure to follow the safety rules stated in this instruction manual may cause serious personal injury

PARTS DESCRIPTION

Fig.3:



1. Cap
2. Pipe
3. Water inlet
4. Water outlet
5. Hose clamp

ASSEMBLY

• WARNING:

Before assembling or adjusting the equipment, switch off the motor and remove the battery cartridge. Otherwise, the machine may start unintentionally and result in an injury.

• WARNING:

When assembling or adjusting the equipment, always put it down. Assembling or adjusting the equipment in an upright position may result in serious injury.

• WARNING:

Follow the warnings and precautions in the chapter “SAFETY WARNINGS” and the instruction manual of the power unit

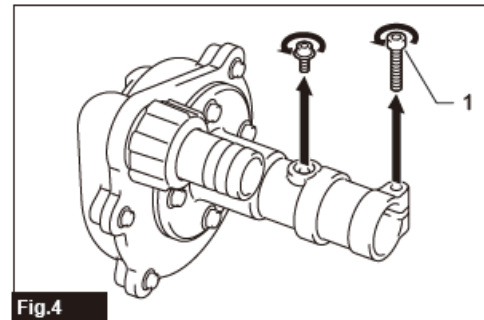
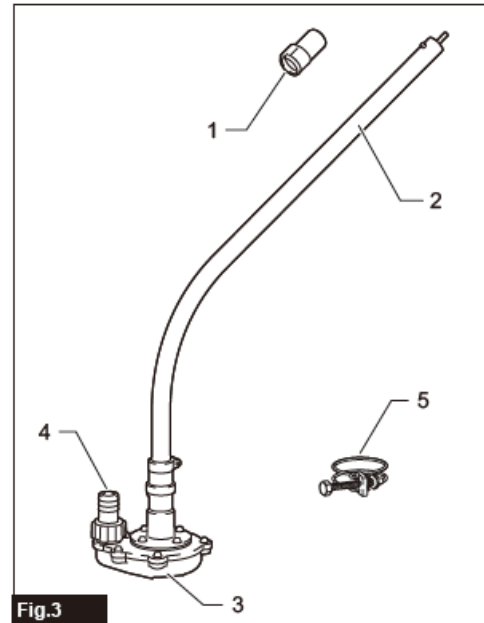
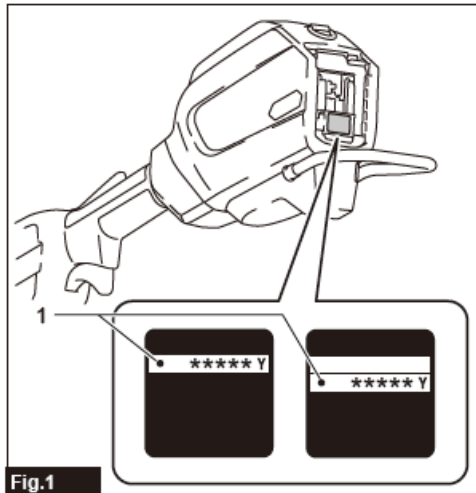
Assembling the pump attachment

1. Remove 2 bolts.
 - Fi.4: 1. Bolt

2. Insert the pipe into the pump head so that the hole on the pipe is aligned with the hole on the pump head.

Tighten 2 bolts securely to fix the pipe.

- Fig.5: 1. Hole 2. Pipe 3. Bolt



NOTE:

When tightening the bolts, apply 2.5 – 4.5 N•m as tightening torque.

Mounting the attachment pipe

CAUTION:

Always check that the attachment pipe is secured after installation. Improper installation may cause the attachment to fall off from the power unit and cause personal injury.

Mount the attachment pipe to the power unit.

1. Remove the cap from the end of the pipe.

- Fig.6: 1. Pipe 2. Cap

- **NOTICE:**

Do not dispose of the cap since the cap is necessary for storing the attachment.

2. Turn the lever toward the attachment.

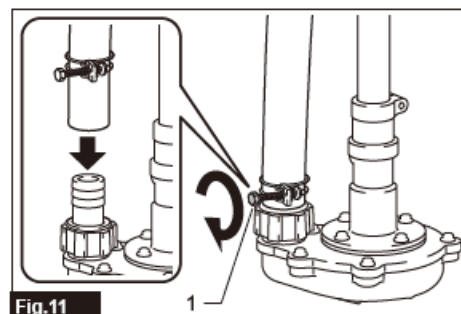
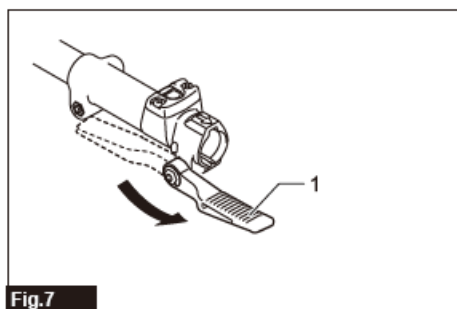
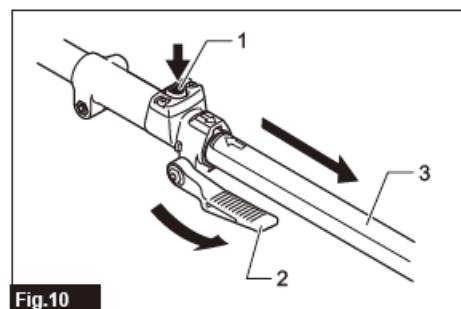
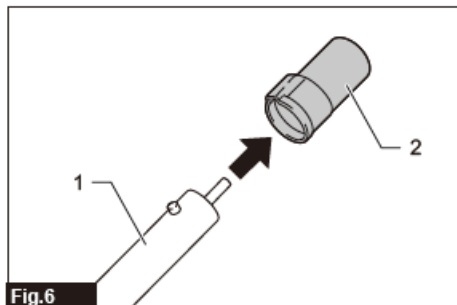
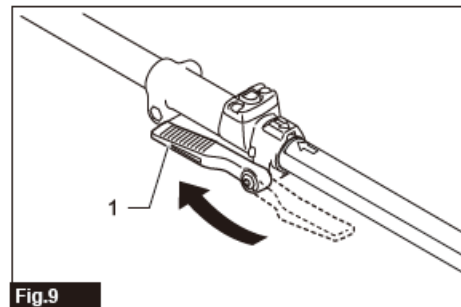
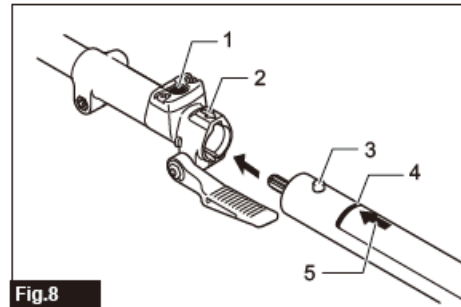
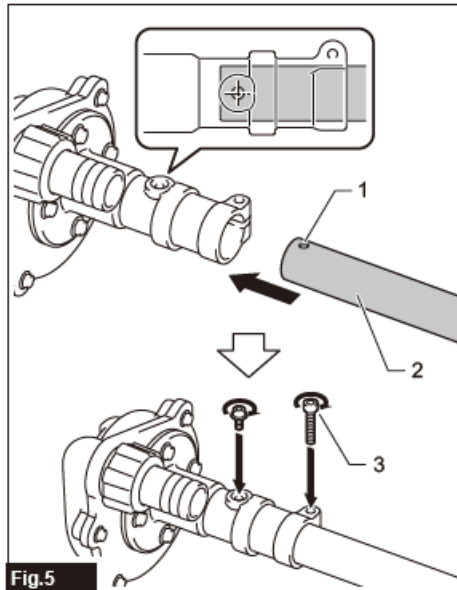
- Fig.7: 1. Lever

3. Align the pin with the arrow mark on the power unit. Insert the pipe until the release button pops up. Make sure that the position line is on the tip of the arrow mark on the power unit, and the arrow mark on the power unit and the arrow mark on the pipe are facing each other.

- Fig.8: 1. Release button 2. Arrow mark on the power unit 3. Pin 4. Position line 5. Arrow mark on the pipe
4. Turn the lever toward the power unit.
- Fig.9: 1. Lever
 - Make sure that the surface of the lever is parallel to the pipe.

• **NOTICE:**

- Do not tighten the lever without the attachment pipe inserted. Otherwise, the lever may tighten the entrance of the drive shaft too much and damage it. To remove the pipe, turn the lever toward the attachment and pull the pipe out while pressing the release button.
- Fig.10: 1. Release button 2. Lever 3. Pipe



OPERATION

• **WARNING:**

- Follow the warnings and precautions in the chapter “SAFETY WARNINGS” and the instruction manual of the power unit.

- **CAUTION:**

- Do not operate the machine without installing the hose to the pump attachment.

- **CAUTION:**

- When operating the machine, be sure to fix the hose. The hose may whip due to the pressure of discharge.

- **CAUTION:**

- Adjust the hanger position and shoulder harness to your comfortable position before operating.

- **NOTICE:**

- Do not pump water containing large amounts of solids or seawater.

- **NOTICE:**

- Do not pump water that exceeds 40°C.

- **NOTICE:**

- Drain water from the hose after the operation.

- **NOTICE:**

- When moving the machine or changing the operating position, be sure to turn off the machine and hold the hose. If you move without holding the hose, the machine may be damaged.

- **NOTICE:**

- After pumping the sewage, pump the fresh water to wash away the dirt adhering to the water inlet and inside the hose.

- **NOTICE:**

- Do not place the machine on the ground while it is switched on. Sand or dust may enter from the water inlet and cause a malfunction or personal injury.

- **Installing the hose**

- **NOTICE:**

- When installing or removing the hose, be careful not to splash water inside the hose on the operator or the power unit. Install the hose to the water outlet and fix the hose with the hose clamp. Tighten the screw of the hose clamp securely with a screwdriver.
- Fig.11: 1. Screw

- **NOTE:**

- The hose that can be installed to the water outlet is as follows:
- The inner diameter of the hose is 25 mm.
- The outer diameter of the hose is 33 mm or less.

- **Pumping operation**

- Hold the machine firmly with both hands and perform the pumping operation
- Fig.12

- **NOTE:**

- The pumping operation can be started from the water level of approximately 20 mm and can be performed up to the residual water level of approximately 10 mm.
- When using the pump attachment in muddy or sandy soil, lay down blocks or other materials, and use the pump attachment on them.
- Fig.13

- **NOTE:**

- Be aware that pumping large amounts of water that contains fine particles such as sediment will shorten

the life of the pump attachment.

- **NOTICE:**

- Do not insert the pump attachment deeper than the limit mark on the pipe. Doing so may cause a malfunction of the machine.
- Fig.14: 1. Limit mark

- **NOTE:**

- If the hose outlet is in water, be aware that water will flow back when the pumping operation is stopped.
- Fig.15

- **NOTE:**

- If the position of the hose outlet is lower than the water surface, be aware that water will continue to flow from the hose outlet after stopping the pumping operation.
- Fig.16

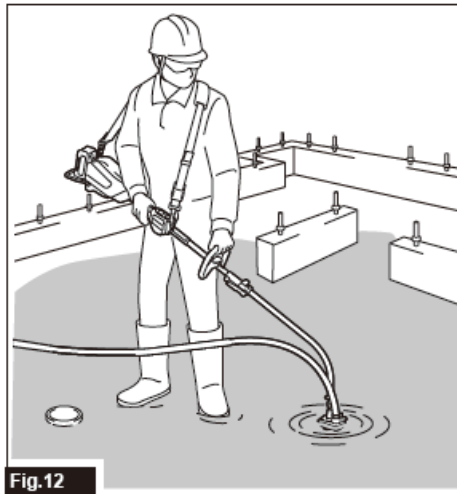


Fig.12

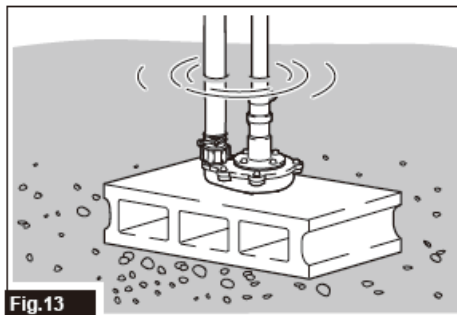


Fig.13

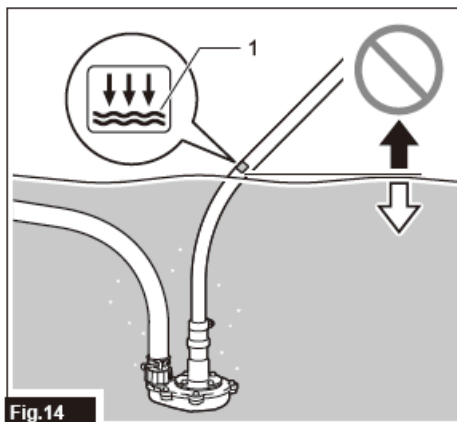


Fig.14

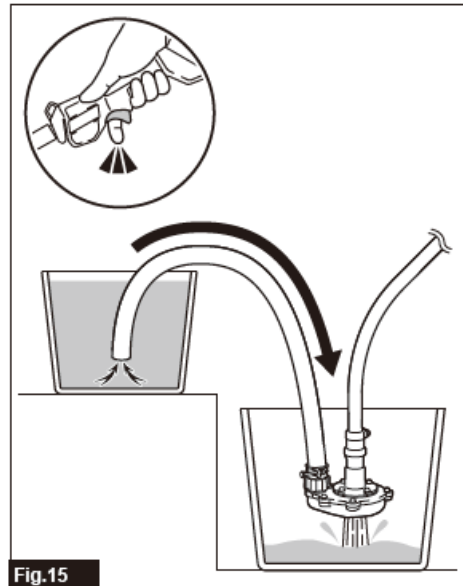


Fig.15

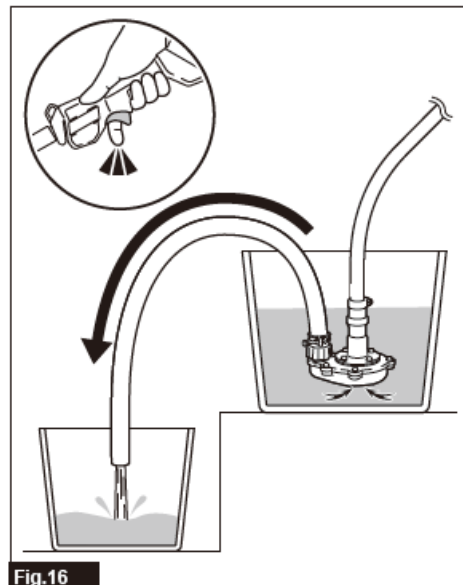


Fig.16

MAINTENANCE

- **WARNING:**

- Before inspecting or maintaining the equipment, switch off the motor and remove the battery cartridge.

Otherwise, the machine may start unintentionally and result in serious injury.

- **WARNING:**

- When inspecting or maintaining the equipment, always put it down. Assembling or adjusting the equipment in an upright position may result in serious injury.

- **WARNING:**

- Follow the warnings and precautions in the chapter “SAFETY WARNINGS” and the instruction manual of the power unit.

- **CAUTION:**

- Wear gloves when performing the inspection or maintenance.

- **NOTICE:**

- Never use gasoline, benzene, thinner, alcohol, or the like. Discoloration, deformation, or cracks may result. To maintain product SAFETY and RELIABILITY, repair and any other maintenance or adjustment should be performed by Makita Authorized or
- Factory Service Centers, always use Makita replacement parts.

Cleaning the water inlet

If the water inlet is clogged with sand or other solid matter, follow the steps below.

1. Loosen the screw of the water inlet, and then remove the plate by turning it.

- Fig.17:
- Screw
- Plate
- Impeller

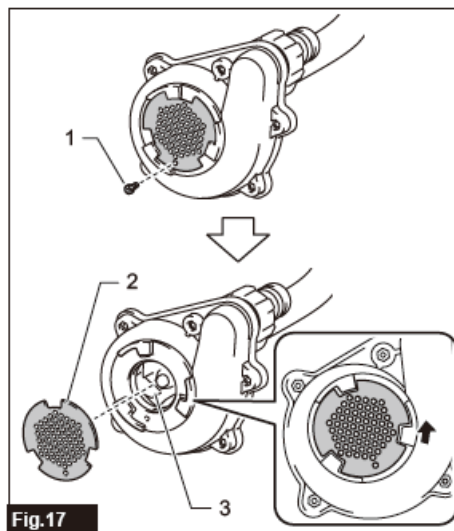


Fig.17

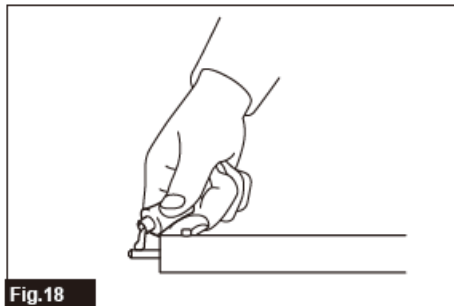


Fig.18

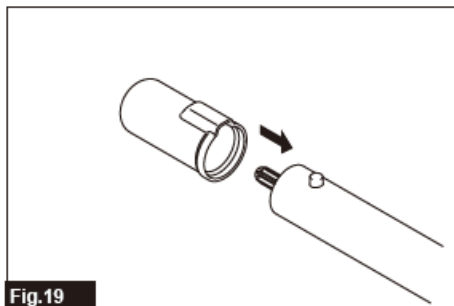


Fig.19

2. Clean the inside of the water inlet with running water. Remove the debris adhering to the plate.
3. Check the impeller for chipping, deformation, wear, or any other abnormality. If you notice any abnormality, ask the authorized service center for repair.
4. Attach the plate and tighten the screw.

Inspection

CAUTION:

- Do not use the machine if you find any abnormality with the impeller. Failure to do so may result in damage to the pump attachment and cause an injury.
- Overall inspection Check for damaged parts. Ask our authorized service center to replace them if necessary.
- Inspection for impeller Check the impeller for chipping, deformation, wear, or any other abnormality.

Lubricating moving parts

• NOTICE:

Follow the instructions for the frequency and amount of grease supplied. Otherwise, insufficient lubrication may damage moving parts.

- **Drive axle:**

Apply grease (Makita grease N No.2 or equivalent) every 30 hours of operation.

- Fig.18

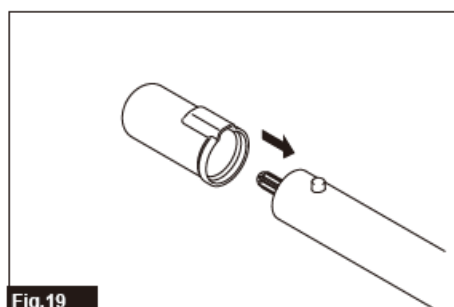
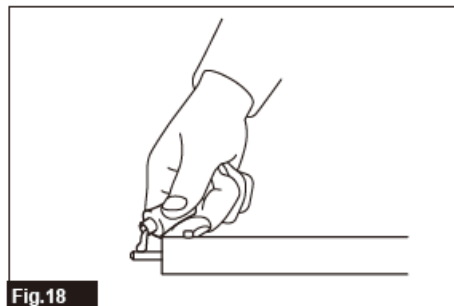
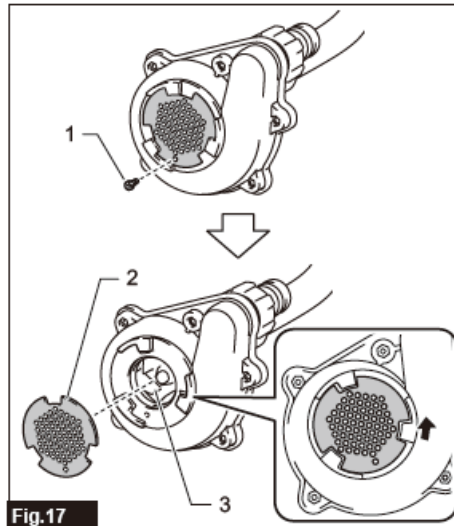
- **NOTE:**

Genuine Makita grease may be purchased from your local Makita dealer.

- **Storage**

When storing the attachment, remove the hose. When storing the attachment separated from the power unit, put the cap onto the end of the p.ipe

- Fig.19



Interval of inspection and maintenance

Operating hour		Before Operation	Daily (10 hours)	30 hours
Whole unit	Visually inspect for damaged parts		—	—
Plate and impeller	Visually inspect for damaged parts.		—	—
Drive axle	Supply grease	—	—	
Power unit	Refer to the instruction manual of the power unit			

TROUBLESHOOTING

Before asking for repairs, conduct your inspection first. If you find a problem that is not explained in the manual, do not attempt to disassemble the machine. Instead, ask Makita Authorized Service Centers, always using Makita replacement parts for repairs.

State of abnormality	Probable cause (malfunction)	Remedy
The motor does not start.	—	Refer to the instruction manual of the power unit.
The motor stops soon.	—	Refer to the instruction manual of the power unit.
Motor speed does not increase.	—	Refer to the instruction manual of the power unit.
The pump does not start. Stop the motor immediately.	The pipes of the power unit and the attachment are not connected properly.	Correctly connect the pipes.
	Abnormal drive system	Contact an authorized service center for repairs.
Water flow is insufficient.	The plate of the water inlet is clogged.	Clean the water inlet.
	The inside of the pump is clogged.	Contact an authorized service center for repairs.
	The impeller is worn or broken.	Contact an authorized service center for repairs.
The power unit vibrates abnormally. Stop the motor immediately.	Abnormal drive system	Contact an authorized service center for repairs.

OPTIONAL ACCESSORIES

CAUTION:

- These accessories or attachments are recommended for use with your Makita machine specified in this manual.
- The use of any other accessories or attachments might present a risk of injury to persons. Only use accessory

or attachment for its stated purpose.

- If you need any assistance with more details regarding these accessories, ask your local Makita Service Center.
- Makita genuine battery and charger

NOTE:

Some items in the list may be included in the product package as standard accessories. They may differ from country to country.

Frequently Asked Questions


- **Q: Can this attachment be used for purposes other than pumping water?**

A: No, this attachment is designed solely to pump water in conjunction with an approved power unit. Using it for other purposes may cause serious injury.

- **Q: What should I do if the power unit is not approved?**

A: Never use the attachment with a non-approved power unit. Using a non-approved combination may result in serious injury.

Documents / Resources

	<p>makita PF400MP Cordless Multi Function Power Head [pdf] Instruction Manual PF400MP, PF400MP Cordless Multi Function Power Head, Cordless Multi Function Power Head , Multi Function Power Head, Power Head, Head</p>
--	---

References

- [User Manual](#)

[Manuals+.](#) [Privacy Policy](#)

This website is an independent publication and is neither affiliated with nor endorsed by any of the trademark owners. The "Bluetooth®" word mark and logos are registered trademarks owned by Bluetooth SIG, Inc. The "Wi-Fi®" word mark and logos are registered trademarks owned by the Wi-Fi Alliance. Any use of these marks on this website does not imply any affiliation with or endorsement.