

MAKER FACTORY Touchscreen For Raspberry User Manual

[Home](#) » [MAKER FACTORY](#) » MAKER FACTORY Touchscreen For Raspberry User Manual

Contents [[hide](#)]

- [1 MAKER FACTORY Touchscreen For Raspberry](#)
- [2 Introduction](#)
- [3 Safety Instructions](#)
- [4 Overview](#)
- [5 Pin Layout](#)
- [6 Example](#)
- [7 Driver Installation](#)
 - [7.1 Install the Raspbian official IMAGE.](#)
 - [7.2 Obtain the LCD driver.](#)
- [8 Documents / Resources](#)
 - [8.1 References](#)
- [9 Related Posts](#)



MAKER FACTORY Touchscreen For Raspberry



Introduction

To all residents of the European Union

Important environmental information about this product

This symbol on the device or the package indicates that disposal of the device after its lifecycle could harm the environment. Do not dispose of the unit (or batteries) as unsorted municipal waste; it should be taken to a specialized company for recycling. This device should be returned to your distributor or to a local recycling service. Respect the local environmental rules.

If in doubt, contact your local waste disposal authorities.

Please read the manual thoroughly before bringing this device into service. If the device was damaged in transit, do not install or use it and contact your dealer.

Safety Instructions

- This device can be used by children aged from 8 years and above, and persons with reduced physical, sensory or mental capabilities or lack of experience and knowledge if they have been given supervision or instruction concerning the use of the device in a safe way and understand the hazards involved. Children shall not play with the device. Cleaning and user maintenance shall not be made by children without supervision.
- Indoor use only.
Keep away from rain, moisture, splashing and dripping liquids.
- Familiarize yourself with the functions of the device before actually using it.
- All modifications of the device are forbidden for safety reasons. Damage caused by user modifications to the device is not covered by the warranty.
- Only use the device for its intended purpose. Using the device in an unauthorised way will void the warranty.
- Damage caused by disregard of certain guidelines in this manual is not covered by the warranty and the dealer will not accept responsibility for any ensuing defects or problems.
- The dealers cannot be held responsible for any damage (extraordinary, incidental or indirect) – of any nature (financial, physical...) arising from the possession, use or failure of this product.
- Due to constant product improvements, the actual product appearance might differ from the shown images.
- Product images are for illustrative purposes only.
- Do not switch the device on immediately after it has been exposed to changes in temperature. Protect the

device against damage by leaving it switched off until it has reached room temperature.

- Keep this manual for future reference.

Overview

resolution 320 x 480
LCD type TFT
LCD interface SPI
touch screen type resistive
backlight LED
aspect ratio 8.5

Pin Layout

pin no.	symbol	description
1, 17	3.3 V	power positive (3.3 V power input)
2, 4	5 V	power positive (5 V power input)
3, 5, 7, 8, 10, 12, 13, 15, 16	NC	NC
6, 9, 14, 20, 25	GND	ground
11	TP_IRQ	touch panel interrupt, low level while the panel detects touching
18	LCD_RS	instruction/data register selection
19	LCD_SI/TP_SI	SPI data input of LCD/touch panel
21	TP_SO	SPI data output of touch panel
22	RST	reset
23	LCD_SCK/TP_SCK	SPI clock of LCD/touch panel
24	LCD_CS	LCD chip selection, low active
26	TP_CS	touch panel chip selection, low active

Example

Required Hardware

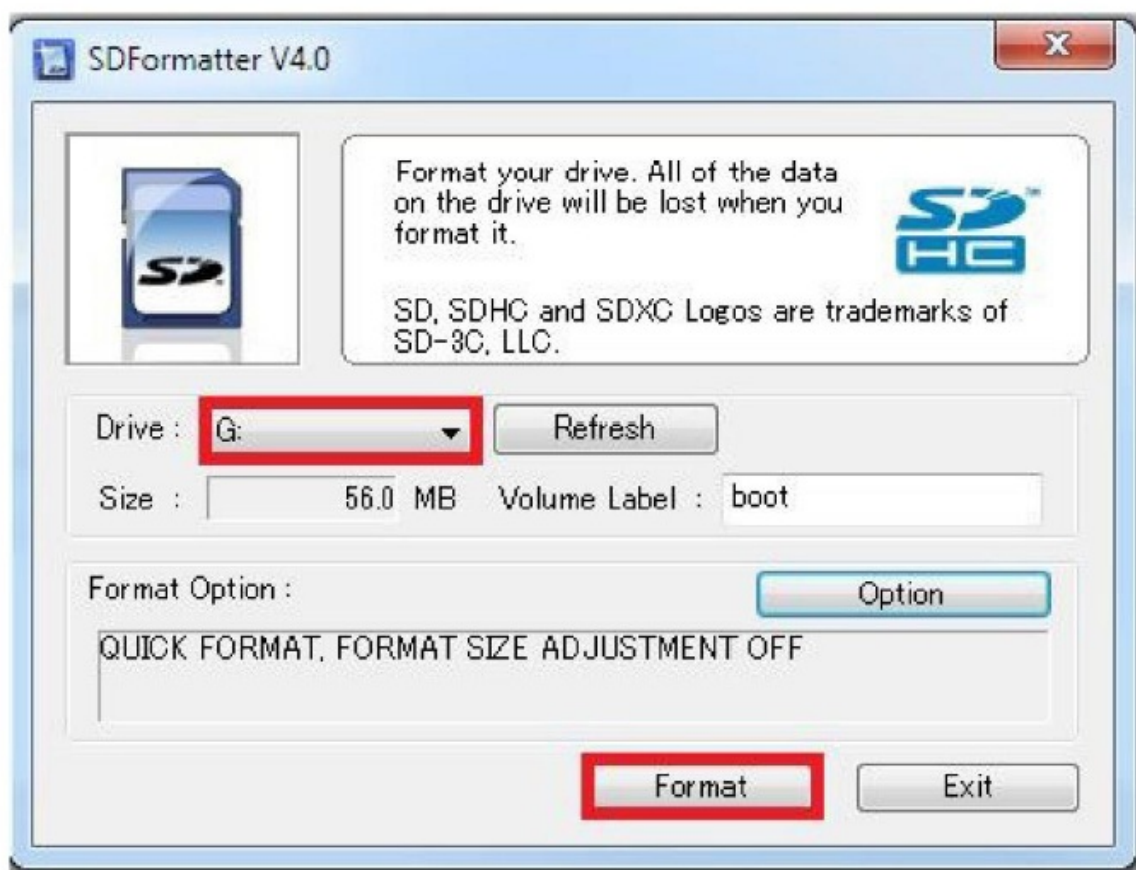
- 1 x Raspberry Pi® 1/2/3 main board
- 1 x microSD card (> 8 GB, image file \pm 7.5 GB)
- 1 x microSD card reader
- 1 x micro USB cable
- 1 x USB keyboard
- 3.5" LCD module (VMP400)

Required Software

- SD formatter
- Win32DiskImager
- Raspberry Pi® OS IMAGE
- LCD Driver

Document	2017/3/22 14:26	文件夹
driver	2017/3/8 12:41	文件夹
image download	2017/3/8 12:41	文件夹
Interface	2017/3/8 12:41	文件夹
software	2017/3/8 12:41	文件夹

1. Format the SD card. Open SDFormatter, select your SD card and click <Format>.



2. Burn the Raspberry Pi® OS IMAGE onto the SD card. Open Win32DiskImager, select the file and SD card, and click <Write>. The burning process may take a few minutes.



3. Make the hardware connection. Connect the VMP400 screen to the Raspberry Pi®. Wait for the device to switch on.



Driver Installation

Install the Raspbian official IMAGE.

Download the latest Raspbian IMAGE from the official website <https://www.raspberrypi.org/downloads/>.

Format the TF card with an SDFormatter.

Burn the official image onto the TF card using Win32DiskImager.

Obtain the LCD driver.

Online Installation

Log onto the Raspberry Pi® user system to command line (initial user name: pi, password: raspberry).
Get the newest driver from GitHub (the LCD should be connected to the Internet).

Offline Installation

Extract from the included CD-ROM or ask your seller.

Copy the LCD-show-160701.tar.gz drive to the Raspberry Pi® system root directory. Copy flash the driver directly onto the TF card after installing the Raspbian IMAGE, or copy by SFTP or other remote copy methods. Unzip and extract the driver files as the following command:

Install the LCD driver.

The corresponding execution for this 3.5" LCD:

Wait for a moment after executing the above command before you can use the LCD.

This is a publication by Conrad Electronic SE, Klaus-Conrad-Str. 1, D-92240 Hirschau (www.conrad.com).


All rights including translation reserved. Reproduction by any method, e.g. photocopy, microfilming, or the capture in electronic data processing systems require the prior written approval by the editor. Reprinting, also in part, is prohibited.

This publication represents the technical status at the time of printing.

Copyright 2019 by Conrad Electronic SE.



Documents / Resources

	<p>MAKER FACTORY Touchscreen For Raspberry [pdf] User Manual 3.5 320 x 480 Touchscreen For Raspberry, ILI9341, MAKEVMP400</p>
---	---

References

- [Conrad Electronic » Your Sourcing Platform](#)
- [Conrad Electronic » Your Sourcing Platform](#)
- [GitHub - goodtft/LCD-show: 2.4" 2.8"3.2" 3.5" 5.0" 7.0" TFT LCD driver for the Raspberry PI 3B+/A/A+/B/B+/PI2/ PI3/ZERO/ZERO W](#)