

Contents [[hide](#)]

- [1 MAKE NOISE 208HP 7U 4 Zone CV Bus Case](#)
- [2 Product Usage Instructions:](#)
- [3 THE 4 ZONE POWER BUS BOARD](#)
- [4 THE POWER CONNECTOR](#)
- [5 INSTALLING MODULES](#)
- [6 FAQs](#)
- [7 Documents / Resources](#)
 - [7.1 References](#)



MAKE NOISE 208HP 7U 4 Zone CV Bus Case



Specifications

- Product Name: 7U 4 Zone CV Bus Case

- Dimensions: 104hp x 7U
- Construction: Powder coated metal
- Power Supply: +12VDC @ 4A, -12VDC @ 2.4A, +5VDC @ 1A per zone

Product Usage Instructions:

Installing Modules:

To install modules in the 7U case, follow these steps:

1. Open the removable lid of the case.
2. Insert the modules into the available slots in the case.
3. Ensure that the modules are securely in place.
4. Connect the modules using patch cables as needed.

Connecting Power:

When connecting power to the 4 Zone Power Bus Board, follow these guidelines:

1. Identify the different zones on the bus board labeled as Zone 1, Zone 2, Zone 3, and Zone 4.
2. Connect the modules to the corresponding power connectors based on the zones to ensure proper power distribution.
3. Make sure to use the dedicated ground return path for each zone.

Using the CV Bus:

To utilize the CV Bus efficiently:

1. Connect the CV Bus to the dedicated vertical header on the 4-Zone Power Bus Board.
2. Utilize the single power connection for the CV Bus.

LIMITED WARRANTY

- Make Noise warrants this product to be free of defects in materials or construction for a period of one year from the date of purchase (proof of purchase/invoice required).
- Malfunction resulting from wrong power supply voltages, backwards or reversed eurorack bus board cable connection, abuse of the product, removing knobs,

changing faceplates, or any other causes determined by Make Noise to be the fault of the user are not covered by this warranty, and normal service rates will apply.

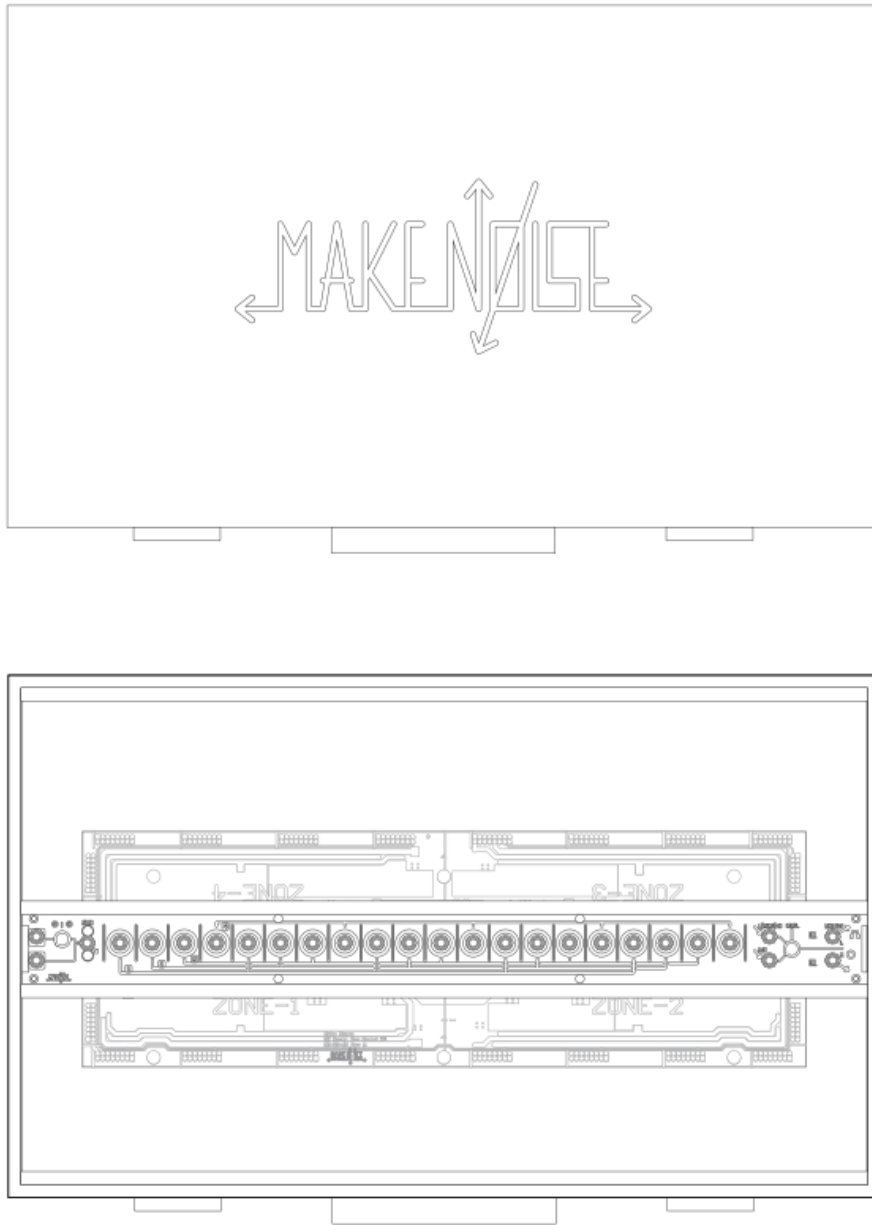
- During the warranty period, any defective products will be repaired or replaced, at the option of Make Noise, on a return-to-Make Noise basis with the customer paying the transit cost to Make Noise.
- Make Noise implies and accepts no responsibility for harm to person or apparatus caused through operation of this product.
- Please contact technical@makenoisemusic.com with any questions, Return To Manufacturer Authorization, or any needs & comments.
- <http://www.makenoisemusic.com>

About This Manual:

- 4 Zone Bus Board and CV Bus Concepts by Tony Rolando
- Hardware Engineers: David Molnar, Cyril Lance, and Tony Rolando, with assistance from Devin Booze and Jon King
- Manual by Walker Farrell, Tony Rolando, and Jon King, with diagrams by Lewis Dahm
- Brought to you by the Make Noise Crew in West Asheville:
- Tony, Kelly, Ally, Bayley, Eric, Jon, Lee, Lewis, Megan, Mike, Peter, Ryan, Sam, & Walker
- Special thanks to the beta testers!

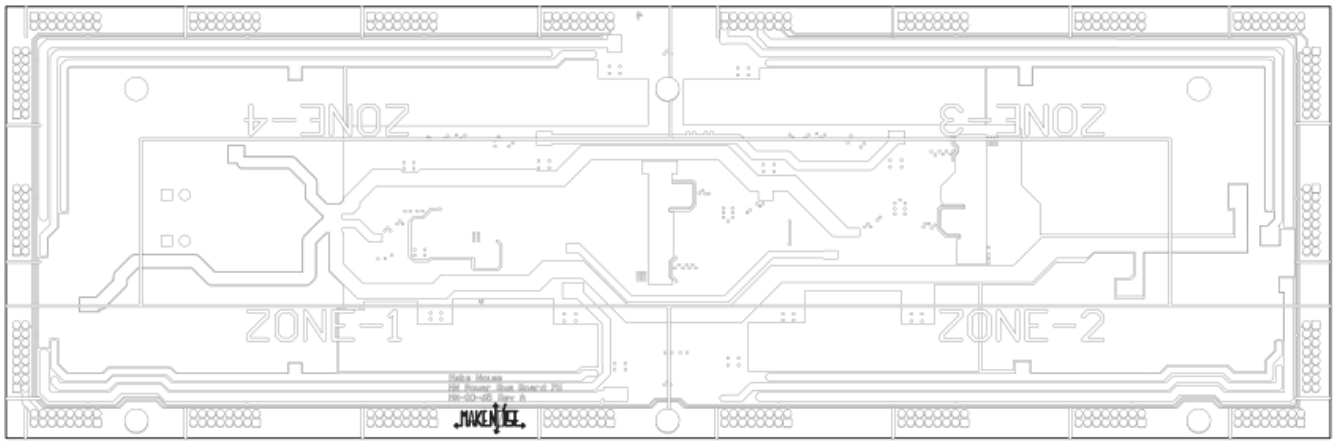
THE 7U CASE

Our 104hp x 7U 4 Zone CV Bus Case arrives ready to use. Just add modules, patch cables and inspiration. The powder coated metal construction offers excellent mechanical durability. The lid is removable and can be closed with the system fully patched. The sleek matte black finish was selected to match our line of Black & Gold modules, and it looks great with just about any module installed. This finish will show the story of your modular synth's travels over the years.



THE 4 ZONE POWER BUS BOARD

The Make Noise 4 Zone Power Bus Board is a new approach to accommodating the ever growing universe of Eurorack modules. The multi-zone solution is like having 4 independent bus boards in a convenient single bus board package. Each Zone features isolated +12VDC and -12VDC supplies and a dedicated ground return path. The +5VDC supply is shared amongst all 4 zones.



- The multi-zone bus board design allows us to achieve some very important goals.
- Greater overall power handling capabilities. 4 zones adding up to a very capable +12VDC @ 4A, 12VDC @ 2.4A and +5VDC @ 1A. Each independent Zone of the Make Noise 4 Zone Power Bus Board is nearly the equivalent power capabilities of a single unit of the original Make Noise Power Bus board. Each Zone can handle up to 1A @ +12VDC, 600mA @ -12VDC. The shared +5VDC circuit can handle up to 1A system-wide.

	+12 VDC	-12 VDC	+5 VDC
EACH ZONE	1000 mA	600 mA	
OVERALL	4000 mA	2400 mA	1000 mA

THE 4 ZONE POWER BUS BOARD

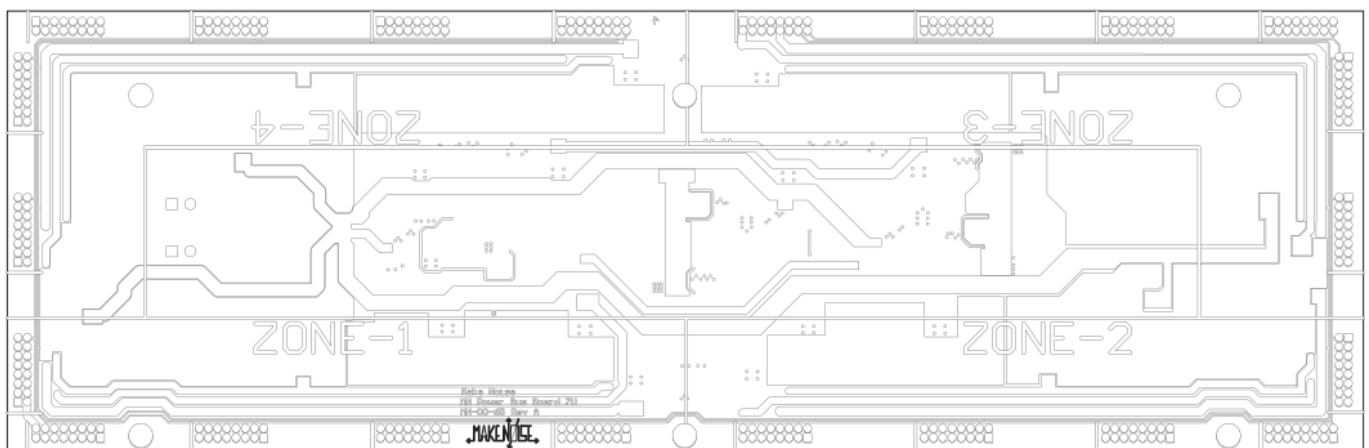
- Lower noise and superior load regulation while retaining the convenience of a light weight power system that can travel worldwide. A fresh new design utilizing a hybrid approach that combines switched mode for bulk power, and per-zone linear regulation. The switched mode bulk power reduces weight and enables use worldwide, while the

per-zone linear regulation offers low noise and excellent load regulation. Because each Zone operates well within the circuit's maximum capabilities, the behavior of these individual Zone power regulation circuits is very good. None of the zones need to see high-stress conditions since the system-wide load is able to be distributed amongst 4 independent zones. With each Zone carrying a more reasonable load and contributing to the overall high current capabilities of this power solution, the behavior of this power supply also improves.

- The ability to isolate noise-prone modules from noise-sensitive modules. Because each of the 4 zones is isolated from each other, if you have modules that misbehave when installed next to each other, you can place them on different Zones to improve isolation from each other. You might find that problem modules are less of a problem on this power supply.
- Looking at the 4 Zone Powered bus board you will see a few things that make it very different from our original Powered is Board design.
- More headers so you can connect more modules and build more varied systems. Because the new 4-Zone Powered Bus Board has much higher current capabilities we were able to comfortably double the number of power connection headers. Additionally, we re-designed the CV Bus to use just a single power connection and we gave the new 4-Zone powered bus board a dedicated vertical header for connecting the CV Bus.

THE 4 ZONE POWER BUS BOARD

Lines designating Zone 1, Zone 2, Zone 3, and Zone 4. The lines indicate which power connectors are in which Zone. This makes it easy to understand how your modules are connected so you can make connection changes if necessary.

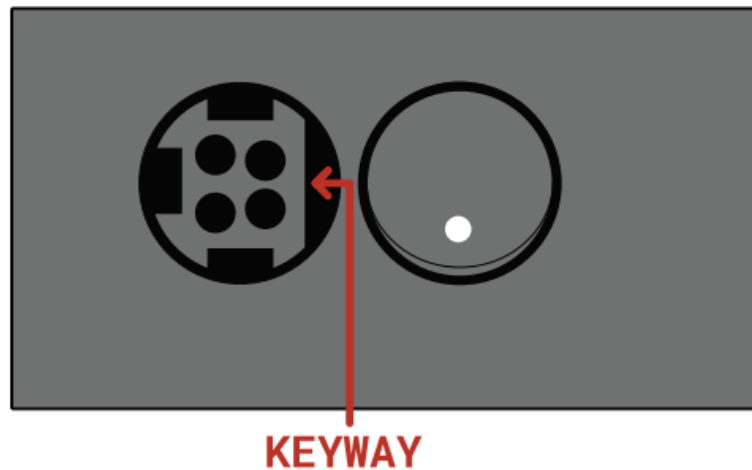


- The AC Adapter is larger and no longer uses the typical 2.1mm barrel connector. This is because we needed more wattage. The large multi-pin connector has the advantage of being a locking type, so your system will remain fully juiced while you wreak havoc on the PA system.
- When building a system, you should be able to install your modules in the arrangement you wish, connecting them to the nearest, easiest-to-reach power connection header.
- If you have the time it could be helpful to look at how your power consumption is distributed across the 4 Zones. The simplest way to do this is to count how many modules are connected to each Zone and try to make each have a similar number of modules connected. This does not tell the whole story though. Every module consumes a different amount of power. Each module is a different collection of electronic circuits having different power requirements. Referring to the manufacturer's website for the actual power consumption specification is the best way to know exactly how much power a module consumes. Using this information you could adjust your power connections to create an evenly distributed power consumption load of modules across all 4 Zones. This will yield the best power supply behavior, but it is not usually necessary unless you are experiencing problems with your system build.
- If you look at the right-hand side of the 4-Zone Powered Bus board you will see 10 LEDs. These LEDs indicate the status of the power inlet coming from the AC Adapter, the +5VDC line, and each of the 4 Zone's +12VDC and 12VDC lines. Observing these LEDs can be helpful in determining which Zone is not operating in the case of a non-functioning system. If any of these LEDs is OFF, it means you have a problem. Some examples of problems:
 1. Module(s) plugged in backwards.
 2. Zone overdrawn (too many modules requesting too much power from a single Zone).
 3. AC Adapter damaged or maybe just not plugged in (This would result in ALL LEDs being OFF)

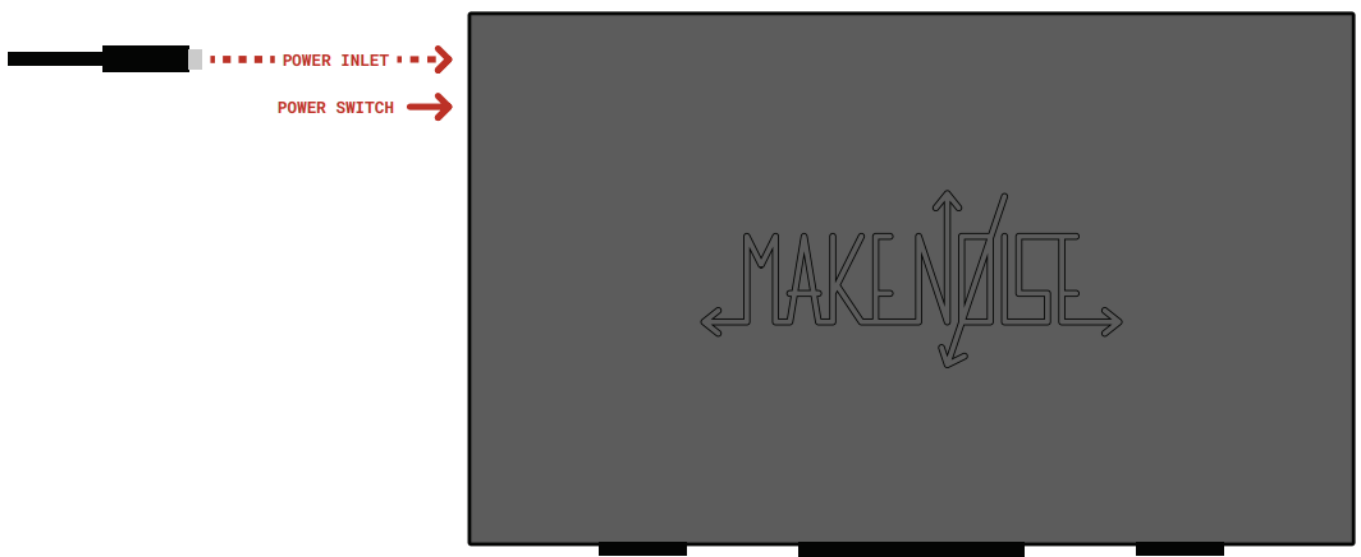
THE POWER CONNECTOR

The adapter plug is a 4 pin DIN type, required for power supplies above 6 amps. The 4

pins are offset, and there is a keyway on the plug. These two features ensure that the plug can only be installed in the correct orientation.



To install the adapter, place the case on a flat surface with the switch and power inlet on the far left. The adapter plug has a 'D' shape. With the flat of the D facing away from you, insert the plug into the power inlet. The plug should lock into place. This locking feature is useful for live performance, ensuring that the power remains connected.



The plug has a sliding sleeve. To remove the plug, slide the sleeve away from the case, and gently pull on the plug. It should come away easily.

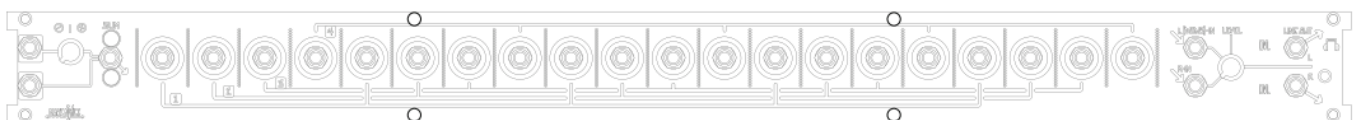
INSTALLING MODULES

- To install a module, find necessary space in your case and confirm proper installation of the included Eurorack bus board connector cable on backside of module. It should be oriented to mate with the -12V connection on the module as specified by the module manufacturer. MOST modules orient 12V “down” and associate the connector cable’s red stripe with -12V, but this is not a universal rule. If you are not certain of the orientation and location of the -12V connection on the module you are connecting, contact the manufacturer of the module. (Make Noise modules include photos of

proper orientation in their respective manuals.)

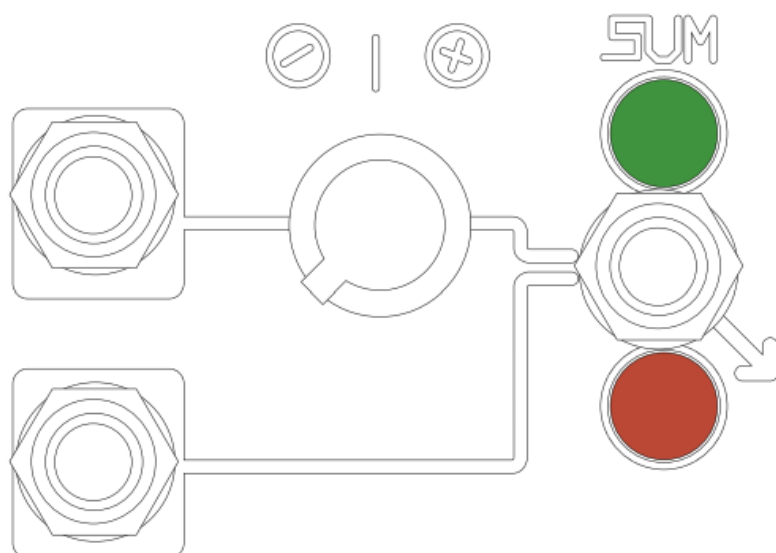
- Plug the bus board connector cable into the 4 Zone Bus Board, minding the polarity so that the RED stripe on the cable is oriented to the NEGATIVE 12 Volt line on both the module and the bus board. On the 4 Zone Bus Board, the negative 12 Volt line is indicated by the white stripe.
- Once both power connections are made and checked, set the module in the case and switch the power ON. The newly connected module should power up (check some basic functionality of the module, such as LED activity). Ensure that all three LEDs on the 4 Zone Bus Board are lighted. If the module or Bus Board does not appear to be powered ON, switch power OFF and double-check connections at both ends of the Eurorack bus board connector cable. If you have the Eurorack bus board connector cable connected correctly and the module still does not appear to power ON or work correctly, contact the manufacturer of that module for technical support.
- **Always power the case OFF before installing or uninstalling modules. When installing multiple modules, always follow the same procedure outlined above (in steps 1-3) for each module.**
- After all modules are connected and powering up correctly, attach them to the rail using the square nuts and the included black M2.5 screws, using a toothpick or similar small tool to slide the nuts into place under the mounting holes of the modules. It is a good idea to distribute the nuts evenly through the rail in case the module order needs to be reconfigured later.
- For best results, power on the case using the switch on the side of the case instead of the switch on a power strip. The circuitry of some modules is sensitive to discrepancies in power up timing; turning on power with the case's switch ensures the most efficient current draw on power up.

THE CV BUS



- The CV Bus consists of three main portions: the Voltage Math, the Multiple, and the Outputs.
- The Voltage Math is found at the left end of the CV Bus. Like the similar circuit on the

0-Coast, it is a small collection of universally useful modular utilities. The two inputs are summed at the output, one at unity and one adjusted by the input attenuator. The attenuverted input is also normalized to a DC offset, for purposes of level shifting, voltage mirroring etc. The output strength and polarity is indicated by the Green and Red output LEDs.



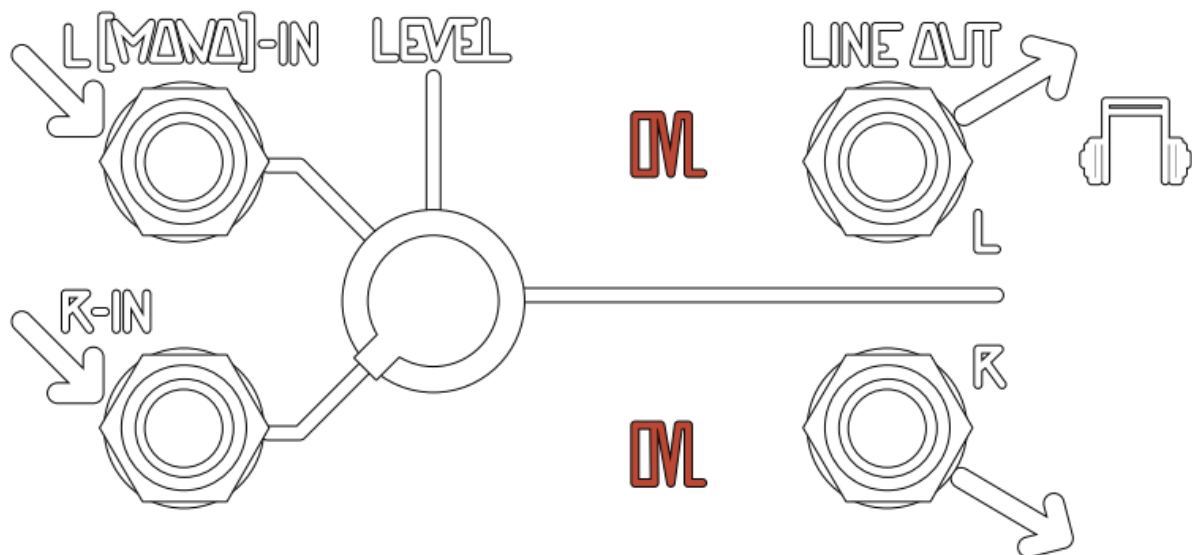
- The Multiple section of the CV Bus was originally designed in 2013 for Alessandro Cortini's personal Make Noise system. It provides visual indication of level, rate and polarity for up to 4 control signals that will be shared throughout a patch. These 4 control signals are color coded and distributed across the center of the system allowing for quick, clean and intuitive patching.
- The distribution method is unlike the typical multiple since the control signals will appear beneath their possible destinations, allowing for the use of shorter patch cables. The color coding and visual indication makes navigating complex patches easier and more intuitive. Typically, the CV Bus would be used to share the most important control signals in a patch such as your Master Clock.

THE CV BUS

- As soon as you patch any signal into a channel of the CV Bus, all the other jacks on that channel become outputs carrying copies of that signal, complete with LED indication of the same color. The LEDs above and below the jacks represent positive and negative voltage, letting us tell at a glance whether the signal is positive,

negative, or bipolar – and even the strength and rate of the signal, letting us know what type of signal it is: a clock appears as a positive “flashing,” a cycling function as a positive “pulsing” or “swelling,” an audio rate VCO as both positive and negative “always on,” etc.

- Unlike most multiples, the channels of the CV Bus are distributed laterally. We can find the signal we need at a location close to its destination, cutting down on the need for longer cables, and thereby streamlining and decluttering the patch visually. This can be a great boon for the quick decisions necessary in a live performance. (These multiples are unbuffered because this allows any jack across the bus to be used as an input, and critical CV outputs in Make Noise modules are buffered already.)
- The Outputs are found at the right end of the CV Bus. A high-quality Stereo Line Driver converts powerful modular synthesizer signal levels to the commonly used Line Level. There are mini-jack inputs for Left or Mono, and Right for Stereo sound, a single master volume control, as well as a stereo line output pair, and finally a TRS line/headphone out on a single jack. This output is capable of driving long cables out to a PA System or a set of Headphones. It has AC coupling and a built-in limiting circuit (with visual indication) that prevents damage to ears and the PA system when the patching gets experimental.



FAQS

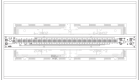
Q: Can I use modules from other brands in the 7U case?

A: Yes, you can use modules from various brands in the 7U case as long as they are compatible with the Eurorack format.

Q: How do I troubleshoot power issues with the 4 Zone Power Bus Board?

A: If you encounter power problems, check the connections, ensure proper grounding, and verify that each module is drawing within the specified power limits per zone.

Documents / Resources

<div><div>7U 4 ZONE CV BUS CASE</div><div></div><div>MAKE NOISE</div></div>	<div>MAKE NOISE 208HP 7U 4 Zone CV Bus Case [pdf] Instructions</div> <div>208HP 7U 4 Zone CV Bus Case, 208HP, 7U 4 Zone CV Bus Case, Zone CV Bus Case, Bus Case</div>
--	---

References

- [User Manual](#)

MAKE NOISE

208HP, 208HP 7U 4 Zone CV Bus Case, 7U 4 Zone CV Bus Case, Bus Case, MAKE NOISE, Zone CV Bus Case

Leave a comment

Your email address will not be published. Required fields are marked *

Comment *

Name

Email

Website

☐ Save my name, email, and website in this browser for the next time I comment.

Post Comment

Search:

Search

[Manuals+](#) | [Upload](#) | [Deep Search](#) | [Privacy Policy](#) | [@manuals.plus](#) | [YouTube](#)

This website is an independent publication and is neither affiliated with nor endorsed by any of the trademark owners. The "Bluetooth®" word mark and logos are registered trademarks owned by Bluetooth SIG, Inc. The "Wi-Fi®" word mark and logos are registered trademarks owned by the Wi-Fi Alliance. Any use of these marks on this website does not imply any affiliation with or endorsement.