


MAJORITY
SNO-BAR-
BLK-2
Snowdon
Bluetooth
Soundbar



MAJORITY SNO-BAR-BLK-2 Snowdon Bluetooth Soundbar User Manual

[Home](#) » [MAJORITY](#) » MAJORITY SNO-BAR-BLK-2 Snowdon Bluetooth Soundbar User Manual 

Contents

- [1 MAJORITY SNO-BAR-BLK-2 Snowdon Bluetooth Soundbar](#)
- [2 FAQs](#)
- [3 Box Contents](#)
- [4 Controls & Functions](#)
- [5 Instructions Guide](#)
- [6 Mode Indicator Lights](#)
- [7 Troubleshooting](#)
- [8 Specification & Warranty](#)
- [9 Warning & Safety Information](#)
- [10 CONTACT INFORMATION](#)
- [11 Documents / Resources](#)
 - [11.1 References](#)
- [12 Related Posts](#)

MAJORITY

MAJORITY SNO-BAR-BLK-2 Snowdon Bluetooth Soundbar



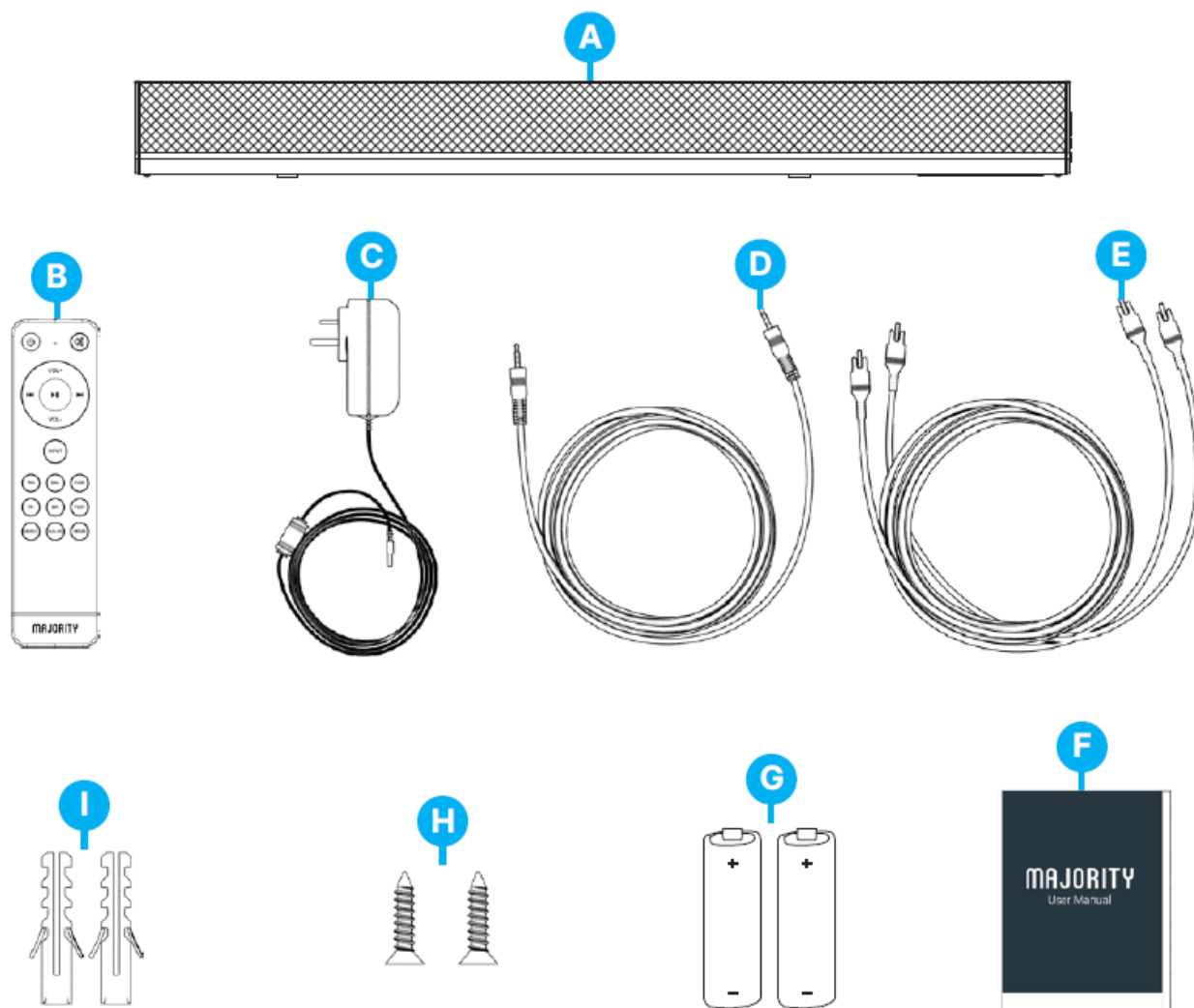
FAQs

- **Q: How do I pair my device with the soundbar via Bluetooth?**
 - A: Press the Pair button on the remote control to enter Bluetooth pairing mode, then search for and select the soundbar on your device's Bluetooth settings.
- **Q: How can I change the sound mode on the soundbar?**
 - A: Use the Input button on the remote control to cycle through the available modes (Optical, Line In, AUX, BT).
- **Q: What should I do if the remote control is not working?**
 - A: Check the batteries in the remote control and ensure they are correctly inserted. If issues persist, try replacing the batteries with new ones.

Box Contents

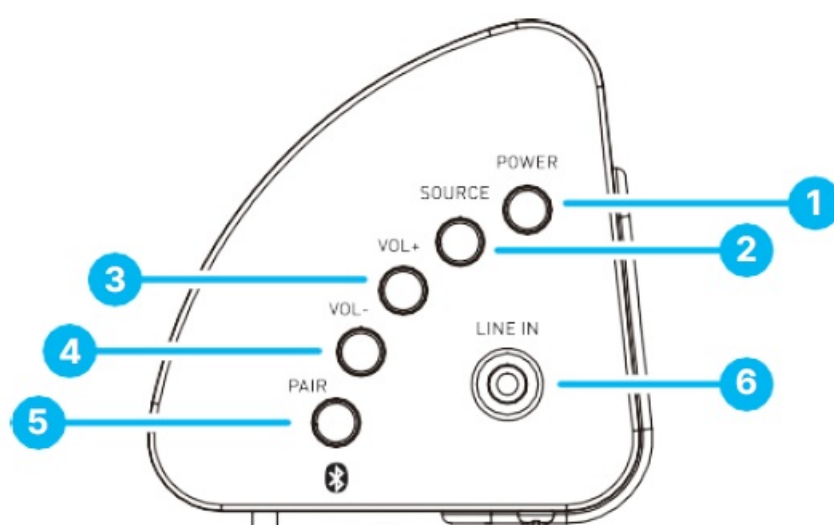
What's in the Box?

- A. Majority Snowdon Soundbar
- B. Remote Control
- C. Power Adaptor
- D. 3.5mm to 3.5mm audio cable
- E. RCA Stereo audio cable
- F. Instructions Guide
- G. "AAA" size batteries
- H. Screws
- I. Wall Plugs



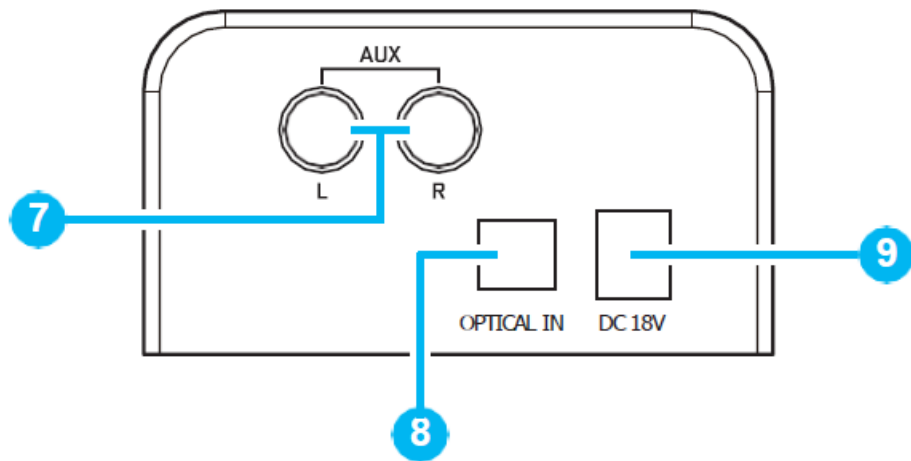
Controls & Functions

Side View / Control Buttons



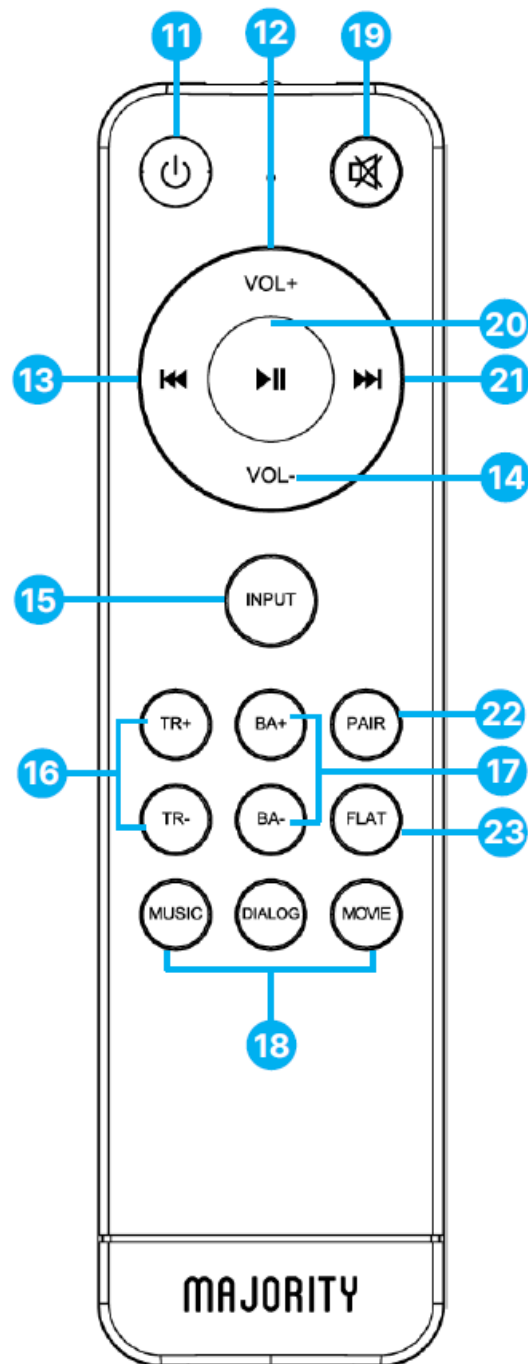
1. Switch the unit on/off
2. Press to change the soundbar modes
3. Increase volume
4. Decrease volume

- 5. Bluetooth pairing button
- 6. Line in socket



- 7. AUX socket
- 8. OPTICAL IN socket
- 9. DC IN (18V) socket

- **Remote Control**



10. Power ON/ Standby
11. Volume +
12. Previous Use in Bluetooth Mode to play the previous track.
13. Volume –
14. INPUT Press repeatedly to change the soundbar mode to Optical, Line In, AUX or BT.
15. Treble + /- Increase /decrease Treble
16. Bass +/- Increase/Decrease Bass
17. Music, Dialog, Movie- Sound effect equalizers. (see page 10).
18. Mute
19. Play/Pause. Press to play/pause audio in Bluetooth Mode.
20. Forward/Next. Press to jump to the next audio track in Bluetooth Mode.
21. Pair Press to pair with a device in Bluetooth Mode. Press again to disconnect
22. Flat Press to restore to default sound settings.

Instructions Guide

Wall Mounting

Safety

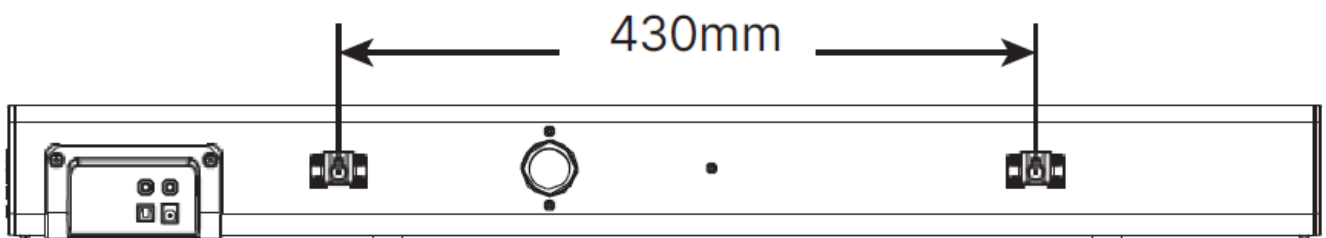
1. Installation must be carried out by qualified personnel only. Incorrect assembly can result in severe personal injury and property damage. If you are going to install this soundbar yourself, you must have studied installations, such as electrical wiring and plumbing that may be buried inside the wall. It is the installer's responsibility to verify that the wall can safely support the total load of the soundbar.
2. Additional tools are required for the installation (not included).
3. Do not over-tighten screws.
4. Keep this user manual for future reference.
5. Use an electric stud finder to check the wall type before drilling and mounting (not included).

Tools & fixings required (not included)

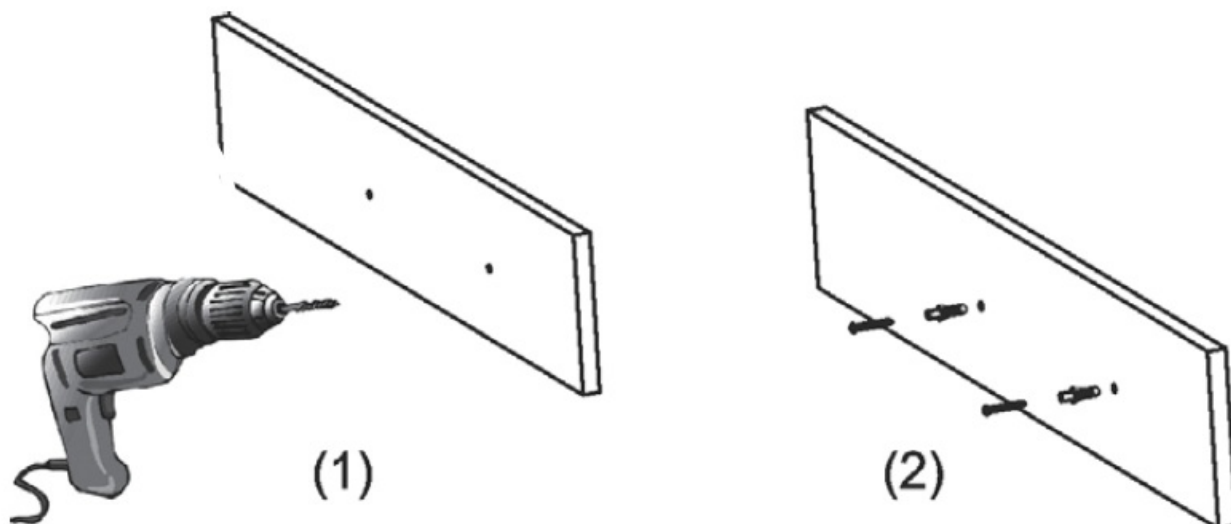
1. Drill fitted with masonry drill bit
2. Pencil
3. Spirit level
4. Screwdriver
5. Ruler

Place the soundbar in the desired position and using a spirit level, check that the soundbar is level. Make a light pencil mark on the wall at the top edge of both fixing brackets. The mark should be positioned directly above each bracket. Note the mounting points on the soundbar (one is 160mm from the end while the other is 160mm from the other end), so you should use the soundbar as a template to get the right mounting positions. Place the soundbar away from the work area and then mark two fixing points 7mm below the light pencil marks for the screws. These marks should be 430mm apart and level. Before drilling, use a spirit level to check that the fixing points marked are level.

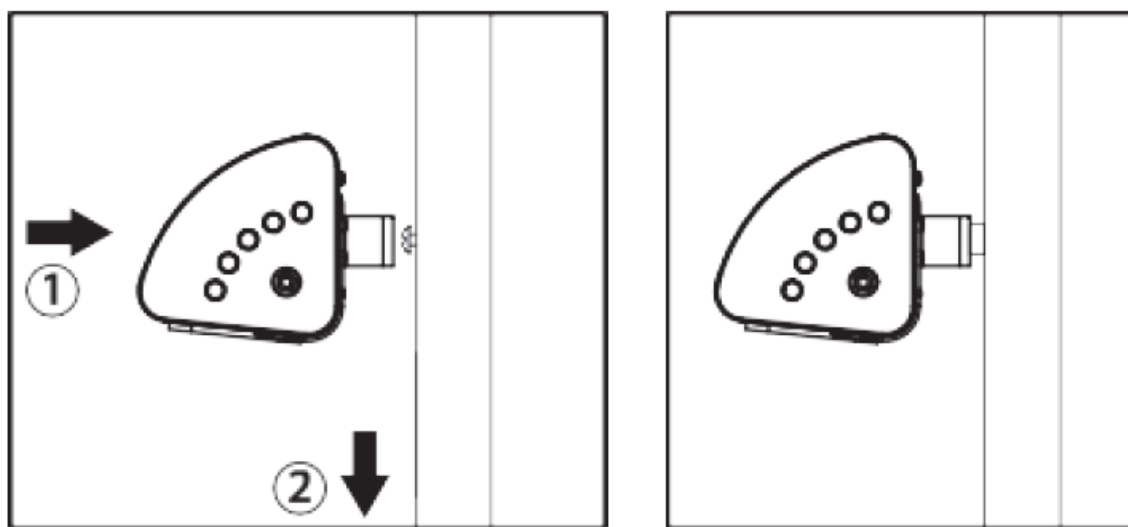
Distance between the holes of two metal brackets



If fixing to a solid masonry wall, use a masonry drill bit, drill holes to a depth of approximately 30mm and insert the wall plugs. Insert the screws into the wall plugs and drive home the screws until the heads stand proud on the wall by about 1mm.

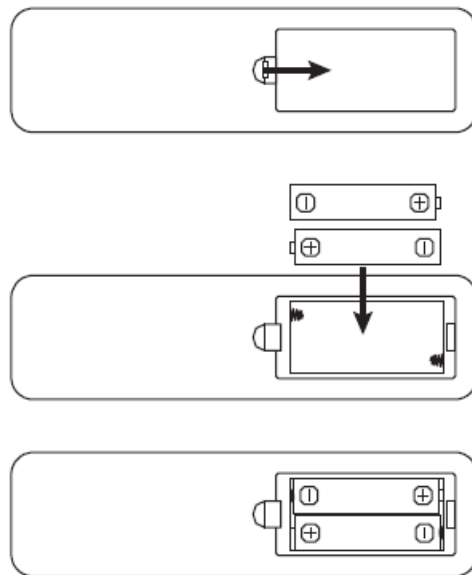


- If fixing to timber, follow the directions above, but only drill a small pilot hole for each screw and do not use the wall plugs provided.
- If fixing to hollow plaster board walls, use a drill bit suitable for wood and replace the wall plugs with wall anchors appropriate for the application. Locate the fixing points into wall studs and cross braces where possible.
- Locate the soundbar onto the screw heads and check that the screws are fully engaged into the keyhole mount before releasing your hold.



Battery Replacement for the Remote Control

1. Press and slide the back cover to open the battery compartment.
2. Insert two “AAA” size batteries (supplied). Make sure the (+) and (-) ends of the batteries match (+) and (-) ends indicated in the battery compartment.
3. Close the battery compartment cover.



Handling the battery

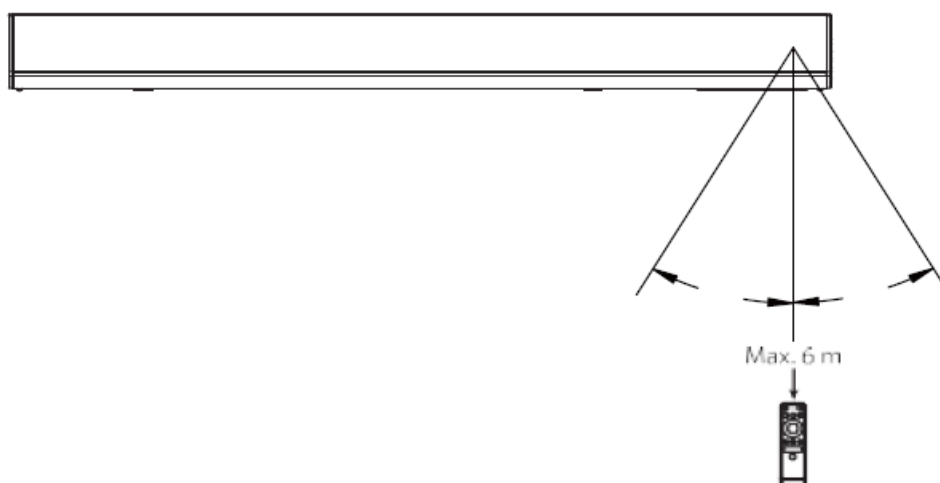
Improper or incorrect use of batteries may cause corrosion or battery leakage which can cause fire, personal injury or damage to property. We recommend using the battery type indicated in this manual. Don't install or mix new and old batteries OR mix different types of batteries. Don't dispose of used batteries as a kind of domestic waste. Dispose of them according to local regulations.

Handling the Remote Control

Don't drop the remote control. Don't spill liquids on the remote control. Don't place the remote control on a wet object or near any source of excessive heat. Take out the batteries from the remote control if it is not necessary to use for a long period of time. Otherwise, they may have corrosion and leakage which incurs physical injury, property damage or fire, etc.

Remote Control Operation Range

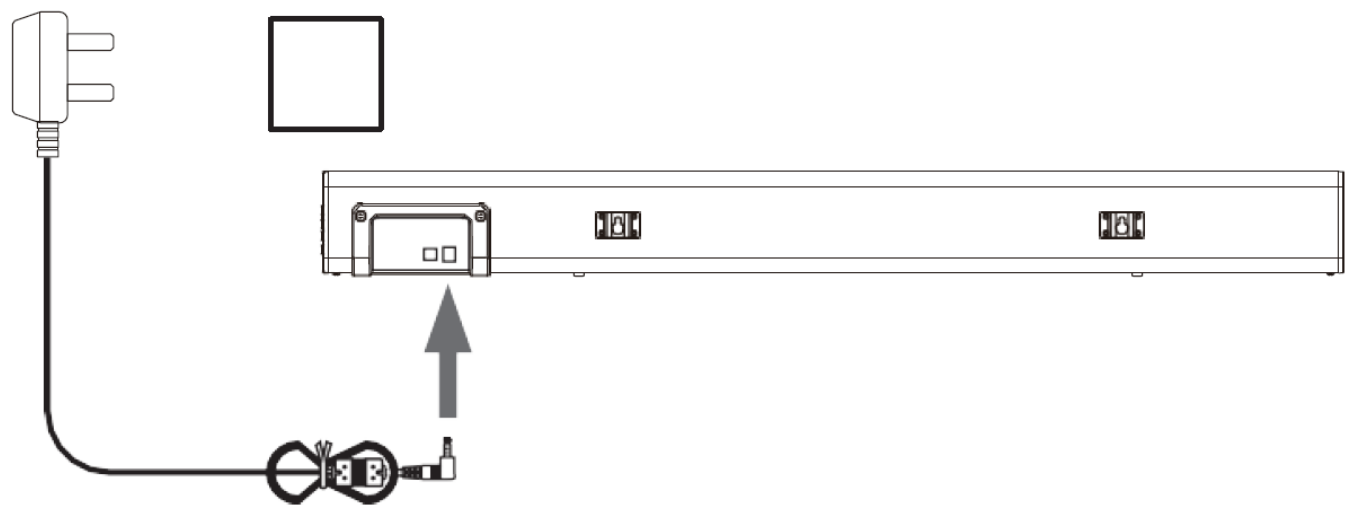
The remote control sensor at the front of the soundbar is sensitive to the remote control's commands up to a maximum of 6 meters away and within a maximum arc of 40 degrees. Please note that the operating distance may vary depending on the brightness of the room.



PLEASE NOTE: The instructions within this user manual will refer to the button number on the soundbar (Ref 'number'), or buttons on the remote control e.g. (Rem. 'number'), in accordance with the diagrams from pages 4 and 5.

Connecting to Mains Supply

Ensure that the power supply voltage is within 100V~240V. Unwind the mains cable to its full length. Connect the mains plug to a mains socket. Ensure the plug is fully inserted into the main socket. The mains plug/appliance coupler is used as the disconnect device, the disconnect device must remain readily operable. Insert the power adaptor into the soundbar DC IN port (Ref.9), then plug to AC Socket. This unit is designed to use a power adaptor. Connecting the unit to any other power source may cause damage to the unit.



Important

Ensure all audio cable connections of the unit are properly inserted before connecting the soundbar to the mains power socket. Unplug the power cord from the outlet when the unit is not in use for an extended period of time.

Mode Indicator Lights

Soundbar Connection	LED light mode indicator colour
Power off	Red
Optical mode	Yellow
RCA mode	White
Line inmode (AUX)	Green
Bluetooth ready	Flashing blue
Bluetooth connected	Blue

Audio Settings

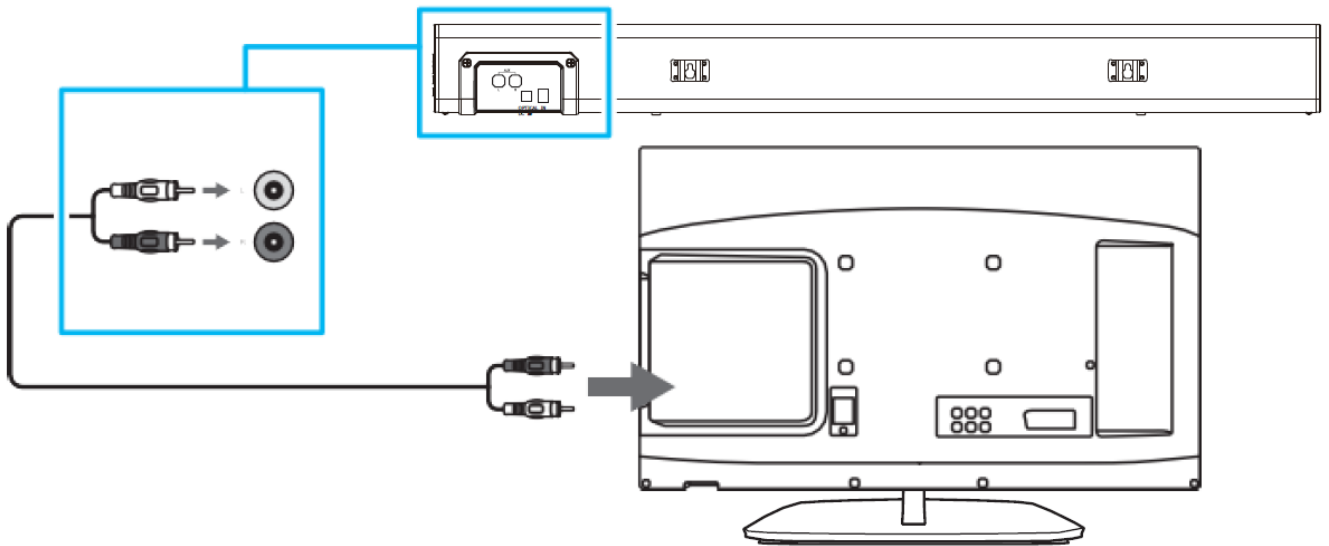
Equaliser Sound Mode	Bass/Treble Functions
Music	Manually change BASS and TRE settings between 0dB and +8dB.
Dialog	BASS+ BASS- TRE+ TRE- functions disabled
Movie	BASS+ BASS- TRE+ TRE- functions disabled
Flat	Restore to default settings + manually change BASS and TRE settings between -8dB and +8dB.

Using the RCA Stereo Input

Connect Majority Snowdon with a TV, using the RCA Stereo audio cable included in the box by following these steps:

- Step 1: Connect the soundbar with your TV using the RCA stereo cable. Power off and unplug the TV and the soundbar and prepare for connection. Insert the two jack ends into TV RCA (L/R) audio output port and the other ends into the AUX (L/R) Input ports of the soundbar (Ref.7). Once the cables are properly inserted into both the soundbar and your device, connect both to the mains and switch them on.
- Step 2: Change the soundbar mode. Press the 'INPUT' button on the remote control (Rem.15) or press the 'Source' button on the soundbar (Ref.2) repeatedly to change the soundbar mode into the RCA mode. The LED indicator will show a white light.
 - **Please Note:** If you are not receiving a picture or encountering interference, please ensure that the RCA cable is being connected to Output RCA ports on your TV set. This will ensure that the sound is being exported correctly.

If your TV does not have Output RCA ports, please use an alternative connection method.
- Step 3: Adjust TV/device audio settings as per the connection type used.

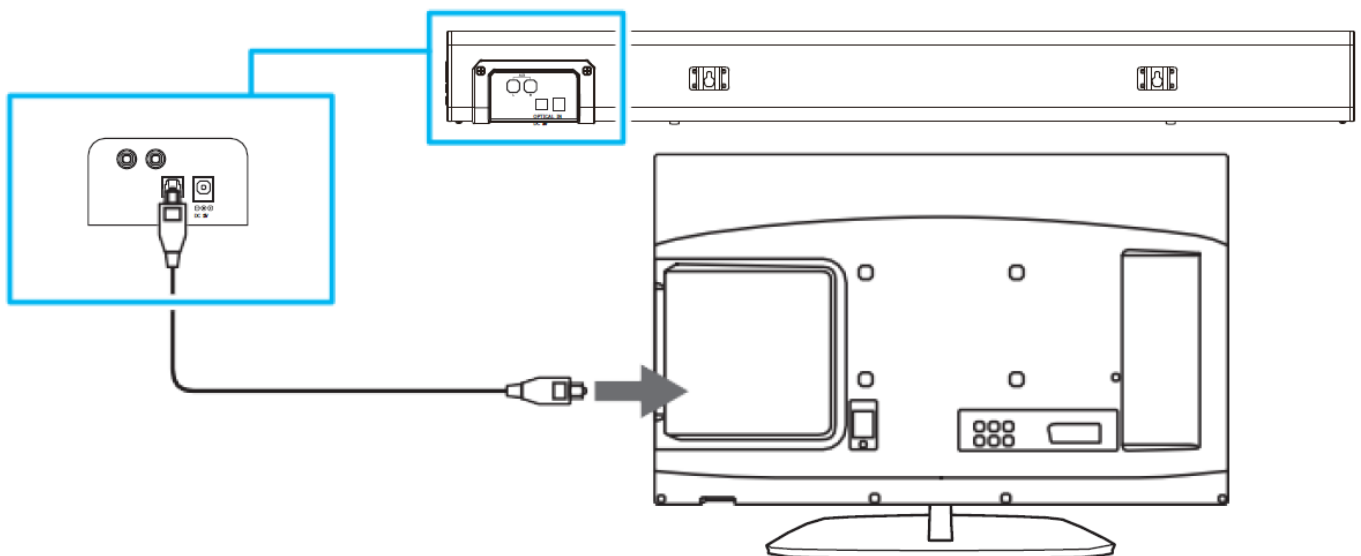


Using the Optical Input

Connect the Majority Snowdon with an audio source/TV/PC or similar device with an Optical Audio Output using a Digital Optical Audio cable (not included).

- Step 1: Connect the soundbar with your device: Unplug and power off the soundbar and your device before connecting. Insert one end of the Optical cable into the soundbar (Ref.8) and the other end on your device Optical output port. Once the cables are properly inserted into both the soundbar and your device, connect both to the mains and power them on.
- Step 2: Change the soundbar mode. Press the 'INPUT' button on the remote control (Rem.15) or press the 'Source' button on the soundbar (Ref.2) repeatedly to change the soundbar mode to Optical. The LED indicator will show a yellow light.
- Step 3: Adjust audio settings on your device. Using the native controls on your connected device, ensure the audio settings are set to Optical Audio and PCM.

Audio from the connected audio source will now be heard through the soundbar.

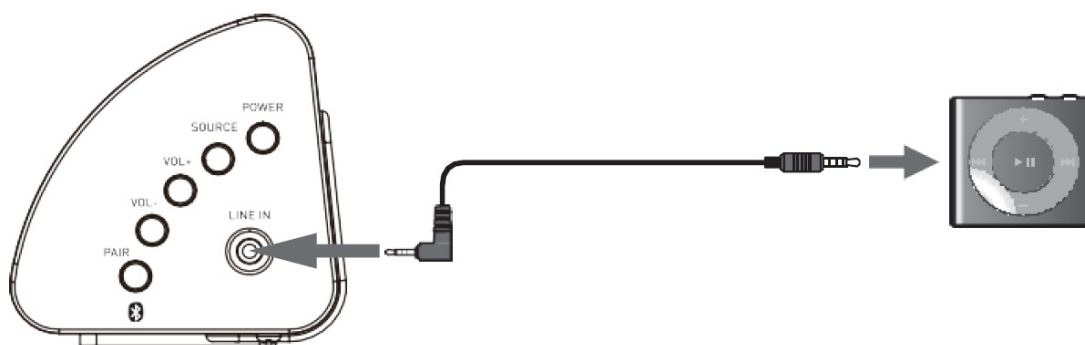


Using the Line Input

Connect the Majority Snowdon to a TV/ PC/ Tablet/MP3 player or other audio device that has an audio output/headphone port using the 3.5mm to 3.5mm audio cable included in the box. Before use, disconnect any cables connected to the Stereo RCA Inputs.

- **Step 1:** Connect the soundbar with your device. Unplug and power off the soundbar and your device before connecting. Insert one end of the 3.5mm audio cable (included) into the Line In port on the unit (Ref.6) and the other end into the audio output/headphone on your audio source (TV, PC, laptop, tablet, phone, etc).
- **Step 2:** Change the soundbar mode. Press the 'INPUT' button on the remote control (Rem.15) or press the 'Source' button on the soundbar (Ref.2) repeatedly to change the soundbar mode to Line In Mode. The LED indicator will show a green light.

The audio played through the connected device will now be heard through the soundbar.



Bluetooth Operation

The Majority Snowdon can be paired via Bluetooth with any Bluetooth-enabled device, such as a Smart TV, PC, Phone, Tablet, or similar, to play audio through the soundbar.

- Press the 'INPUT' button on the remote control (Rem.15) or press the 'Source' button on the soundbar (Ref.2) repeatedly to change the soundbar mode to Bluetooth Mode. The LED indicator will flash a blue light.
- Using the native controls on your Bluetooth device, select "Majority Snowdon" from the list when prompted to pair with the soundbar. If your device requests a password, enter the default "0000". If you encounter issues at this stage, please refer to the user manual for your Bluetooth device for instructions on pairing and connecting Bluetooth devices.
- When successfully connected, a beep will be heard from the soundbar, and the LED indicator will show a steady blue light. After initial pairing, the unit will stay paired unless manually unpaired by the user, or until the device is switched off or reset. If your device should become unpaired or you find it is unable to connect, repeat the steps above.

To pair/unpair press the 'PAIR' button once on the remote control (Rem.22) whilst the soundbar is in Bluetooth mode. Press again to disconnect/unpair

Troubleshooting

Observation	Potential Cause/Solution
No power/function	<p>Check whether the power is switched on or off at the wall.</p> <p>Check whether the power adaptor is properly connected to power outlet or not.</p>
Nosound	<p>Check whether the unit is set to MUTE.</p> <p>Check whether your desired mode is correctly selected.</p> <p>Check if cables are properly inserted.</p> <p>Check your device's audio settings- ensure these are set to PCM. (This is applicable when connected to TV or PC/laptop).</p>
Issues with Bluetooth connection	<p>Check whether you have pressed the PAIR button before pairing.</p> <p>Check whether the external device requires password "0000" to start with.</p> <p>Check if soundbar or your device are paired with other devices. Unpair and try pairing again.</p>
Function disturbance	<p>Switch off and unplug the unit. Leave for 2 minutes and switch it on again.</p> <p>If a particular mode is causing problems, please try an alternative connection to your TV such as Optical, AUX or Bluetooth.</p>
Remote control does not work [properly]	<p>Check whether the battery needs replacing. Replace if necessary. Check whether there are obstacles blocking the remote sensor.</p>
Hissing/static/humming noise	<p>Check and ensure the audio setting of the input source (e.g. TV, PC, games console, DVD player, etc.) is set to PCM.</p> <p>Try a different cable or different type of connection.</p> <p>Ensure there are no cables crossing over which can cause humming interference noise.</p>

Specification & Warranty

Power Supply	DC 18V 1.5A
Frequency Response	30Hz-20KHz
SNR	70dB
Separation	45dB
Bluetooth	V5.0
Dimension (WxHxD)	81× 8.3× 8.3 cm
NetWeight	1.5kg

Support

If you require further assistance with your Majority product, please contact our support team on the Majority website: www.majority.co.uk/support

Warranty

All products come with a standard 12-month warranty. All items must be registered within 30 days on www.majority.co.uk for the warranty to be valid. Once on the web page, use the menu to find “Register Your Product”. You will also be given the chance to extend your warranty for an additional 24 months, free of charge.

Warning & Safety Information

- General Safety Information – Read and Retain: Review all safety and operating instructions before use; keep them for future reference.
- Follow Instructions: Adhere strictly to all safety and operational guidelines.
- Water Exposure: Keep the device away from water; avoid placing liquids near it.
- Ventilation: Ensure ventilation openings are unobstructed to prevent overheating.
- Heat Sources: Keep the device away from heat-emitting appliances.
- Wall Mounting – Installation Safety: Follow the manufacturer’s instructions and use approved mounting kits only. Avoid drilling into areas with cables, gas, or water lines. Use proper tools and safety apparatus.
- Regular Maintenance: Inspect regularly for wear or damage, especially if wall-mounted.
- Relocation: Detach from the wall mount before moving.
- Child Safety: Keep out of children’s reach and ensure heavy items are securely mounted.
- Seismic Precautions: Use specialized mounts in earthquake-prone areas.
- Electrical Safety – Power Source: Use the specified power source; consult an electrician if unsure.
- Cable Management: Protect the power cord from damage.
- Power Disconnection: Keep the main plug accessible; unplug during storms or long periods of non-use.

- Battery Safety – Charging: Use the manufacturer's charger; avoid extreme conditions.
- Heat Exposure: Keep batteries away from heat to prevent explosion or leakage.
- Battery Condition: Discontinue use if the battery is damaged; dispose of it properly.
- Replacement: Only use recommended batteries; incorrect types can cause hazards.
- External Batteries: Use only specified types, observing correct polarity.
- Battery Removal: Remove batteries if not used for an extended period.
- Disposal: Follow local regulations for battery disposal; do not incinerate.
- Connectivity Safety – Cable Connections: Power off devices before connecting or disconnecting cables.
- Bluetooth Pairing: Ensure a secure connection; avoid interference from other devices.
- Volume Control: Keep volume moderate to prevent hearing damage.
- Connectivity and Data Security – Wireless Security: Review privacy policies and secure your network.
- Software Updates: Keep software updated for security and performance.
- Children's Safety Warnings – Product Use: Intended for adults; keep away from children.
- Battery Warning: Keep batteries and items containing batteries out of children's reach.
- Volume Control: Maintain a safe volume level to protect children's hearing.
- Fire Hazard – Flammable Materials: Do not place open flames near the product.
- Overheating: Avoid covering the product to prevent overheating and fire risks.
- Disposal and Recycling – Product Disposal: Dispose of at a recycling centre according to local laws.
- Environmental Compliance: Follow regulations for battery and electronic waste disposal.
- User Maintenance – Cleaning: Unplug before cleaning; use a dry cloth only.
- Servicing: Only qualified personnel should perform repairs.
- Data Protection: Reset to factory settings before returning or disposing of the product.
- Disclaimer: Failure to follow these instructions may result in injury, death, or property damage. The manufacturer is not liable for damage caused by improper use.

Declaration of Conformity:

- We, Izilla Ltd, Newton House, 2 Pioneer Court, Histon, Cambridge, CB24 9PT declare under our sole responsibility that the product:
- Product Name: Snowdon Soundbar
- Model: SNO-BAR-BLK-2 UK FBA/1000002908 Brand Name: Majority

To which this declaration referred is in conformity to the following harmonized standards or normative documents (CE & Rohs 2.0) ;

- EN 55035 2017,
- EN 55032 2015,
- EN61000-3-2 2014,
- EN61000-3-3 2013,
- EEN62368-1 2004+A11 2017,
- ETSI EN 301 489-1 V2.2.3(2019-11),
- ETSI EN 301 489-17, V3.2.2(2019-12),
- ETSI EN 300 328 V2.2.2 (2019-07),
- EN 62479 2010,

- IEC 62321-3-1 2013,
- IEC 62321-4 2013,
- IEC 62321-5 2013,
- IEC 62321-6 2015,
- IEC 62321-7-1 2015,
- IEC 62321-7-2 2017,
- IEC 62321-8 2017, (EC)NO 1275/2008,EN50564 2011, (EC)NO 801/2013.

Complying with the requirements or provisions of Council Directives which relate to:


EMC Directive 2014/30/EU, RED Directive 2014/53/EU, LVD Directive 2014/35/EU, Directive (2011/65/EU) and its amendment directives 2015/863/EU (RoHS 2.0) of the, European parliament, ERP Directive 2009/125/EC.

CONTACT INFORMATION

Importer's Addresses:

- UK Zilla Ltd, Newton House, 2 Pioneer Court, Histon, Cambridge, CB24 9PT
 - Email: techsupport@majority.co.uk
- EU RP AR Experts, Po Box 5047, 3620 AA Breukelen, The Netherlands
 - Email: info@ar-experts.eu
- US iZilla Ltd C/O A.N.Deringer Inc, 19520 Wilmington Ave, Rancho Dominguez, CA, 90220
 - Email: techsupport@majority.co.uk
 - www.majority.co.uk

Documents / Resources

	<p>MAJORITY SNO-BAR-BLK-2 Snowdon Bluetooth Soundbar [pdf] User Manual 2024-10-28, SNO-BAR-BLK-2 Snowdon Bluetooth Soundbar, SNO-BAR-BLK-2, Snowdon Bluetooth Soundbar, Bluetooth Soundbar, Soundbar</p>
---	--

References

- [🌐 Language selection | European Commission](#)
- [📺 Majority – Home Audio | DAB & Internet Radios | Soundbars](#)
- [📺 Support – Majority](#)
- [📺 Support – Majority](#)
- [User Manual](#)

[Manuals+](#), [Privacy Policy](#)

This website is an independent publication and is neither affiliated with nor endorsed by any of the trademark owners. The "Bluetooth®" word mark and logos are registered trademarks owned by Bluetooth SIG, Inc. The "Wi-Fi®" word mark and logos are registered trademarks owned by the Wi-Fi Alliance. Any use of these marks on this website does not imply any affiliation with or endorsement.