



Contents [[hide](#)]

- [1 MAJORITY Darwin Bedside Clock Radio](#)
- [2 What's in the Box?](#)
- [3 Controls & Functions](#)
- [4 Basic Operation](#)
- [5 Setting the Time and Alarm](#)
- [6 Snooze, turn off or cancel the alarm](#)
- [7 FM Radio](#)
- [8 Bluetooth](#)
- [9 Other Features](#)
- [10 Troubleshooting](#)
- [11 Specification](#)
- [12 Warning & Safety Information](#)
- [13 Documents / Resources](#)
 - [13.1 References](#)

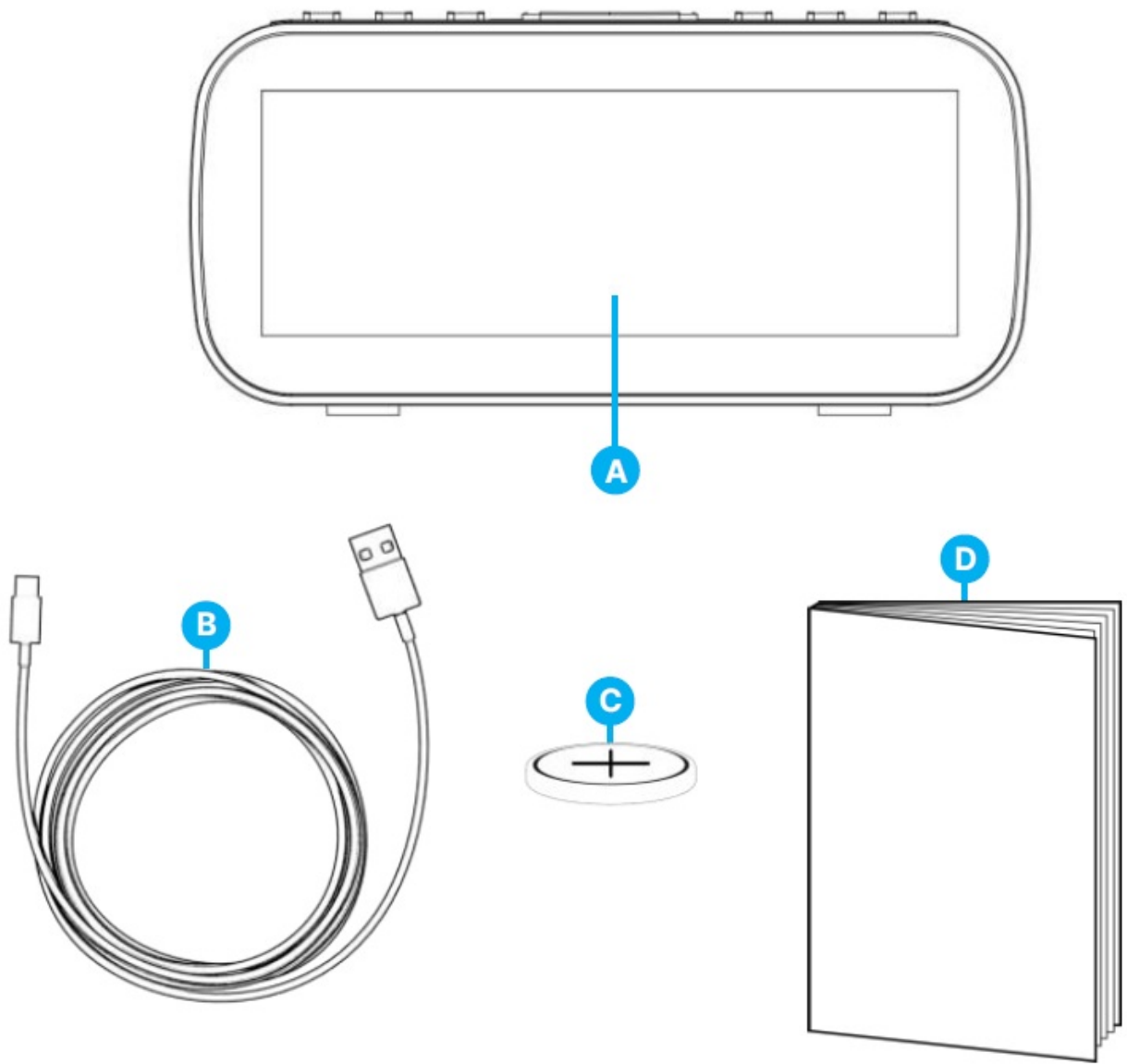
MAJORITY

MAJORITY Darwin Bedside Clock Radio



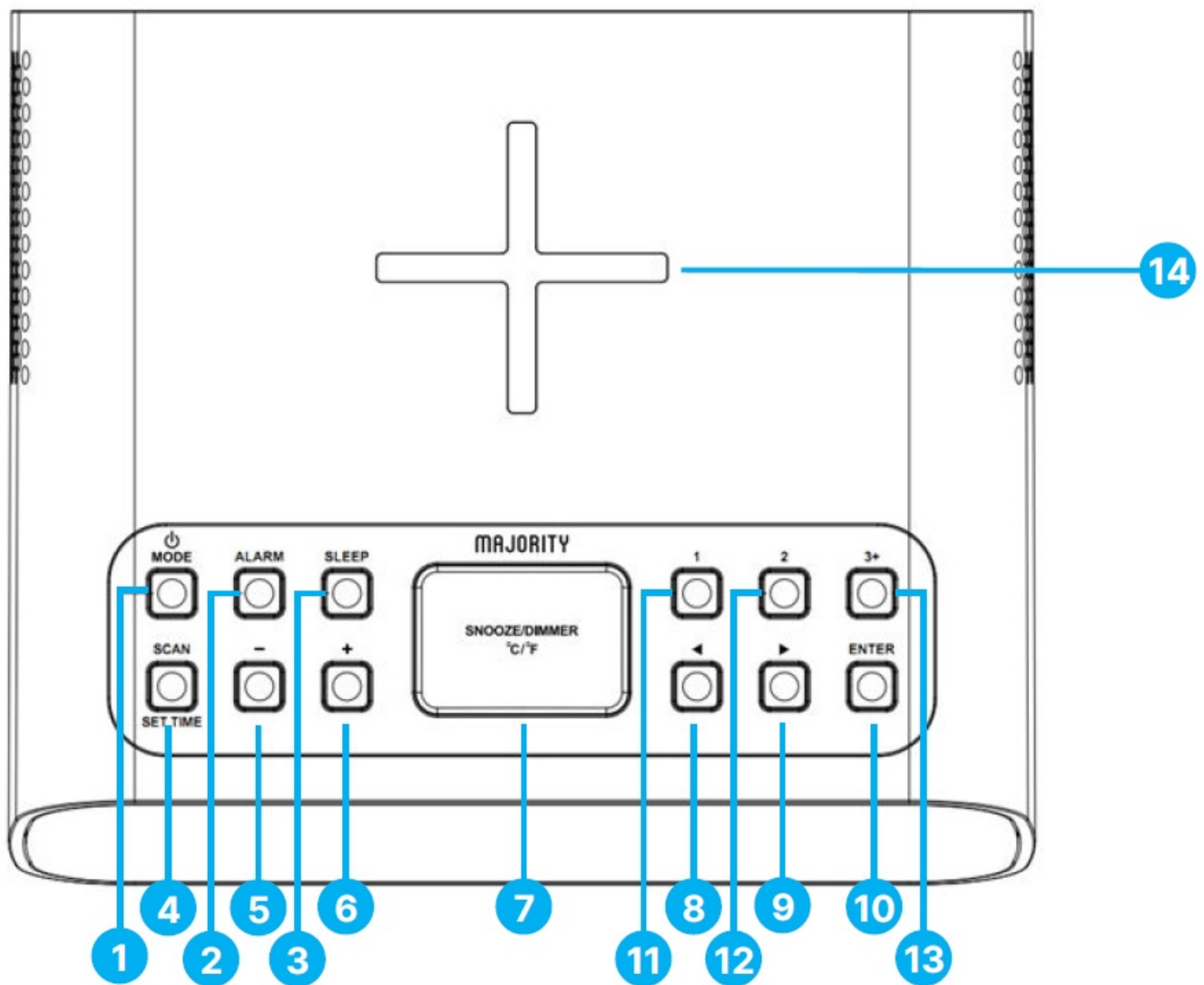
What's in the Box?

- **A.** Darwin Clock Radio
- **B.** USB Type–C cable with a plug
- **C.** Back-up battery CR2025
- **D.** User Manual



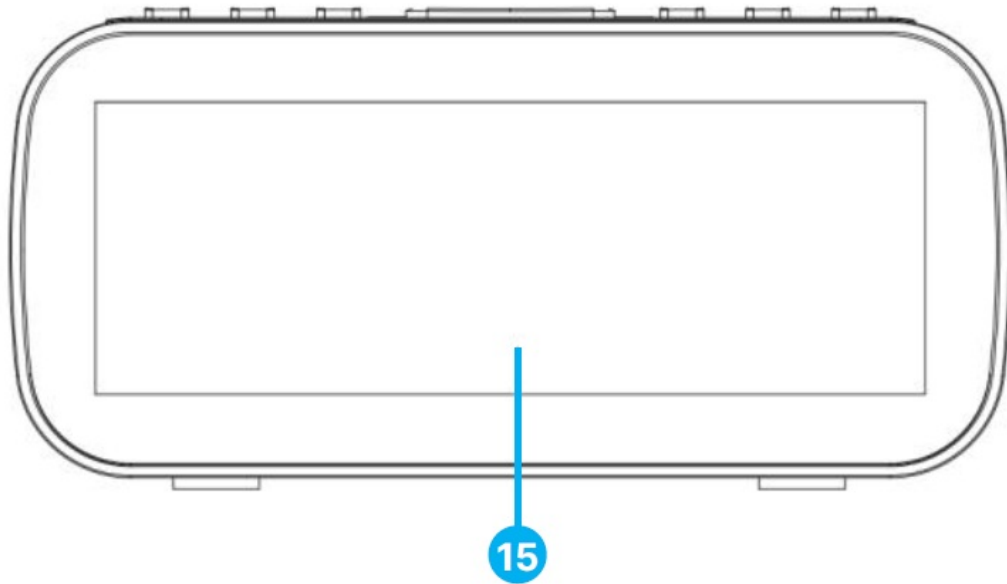
Controls & Functions

Top View

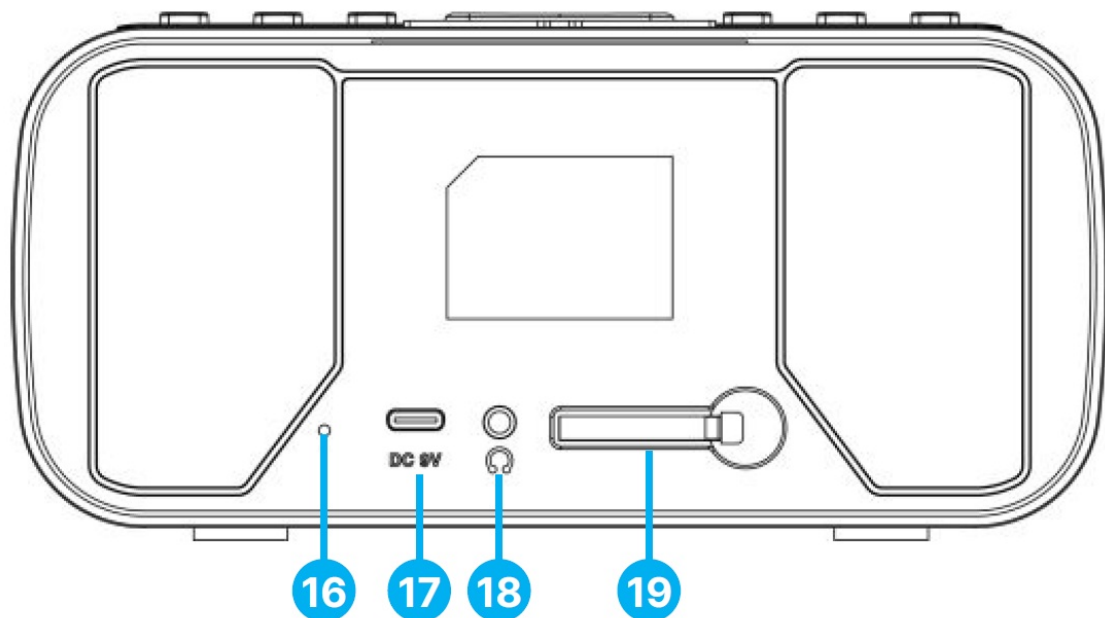


1. Power/Mode button
2. Alarm
3. Sleep timer
4. Scan/Set Time
5. Volume –
6. Volume +
7. Snooze/ Dimmer/ Temperature °C/°F
8. Previous
9. Next
10. Enter
11. Preset 1
12. Preset 2
13. Preset 3+
14. Wireless Charger Base for mobile phones

Front View



Back View



- 15. Radio Display
- 16. Pig – tail radio antenna
- 17. DC In – USB type C port
- 18. Headphone jack
- 19. Back-up battery slot

Basic Operation

Please Note: All (Ref.) refer to Page 4-5 ‘Controls and Functions’ mapping guide.

Remove packaging and prepare the radio for use. Position the radio where you have good radio signal for best reception. Unwind the pig-tail radio antenna ensuring the antenna is fully extended before use. Insert the USB type-C cable into the DC IN port (Ref.17), and then plug into a wall socket. Once plugged on, the radio display will light

up.

POWER ON /OFF

Press the 'POWER/MODE' (Ref.1) button to switch the radio on.

Press and hold the 'POWER/MODE' (Ref.1) button for 2-3 seconds to set the radio into Standby mode. In this mode the radio will show on its display screen the time, the room temperature and the activated alarm icons.

Unplug the radio from the main socket to completely power off.

MODE Switch

While the radio is in working mode, press the 'POWER/MODE' (Ref.1) button repeatedly to switch the radio modes in between FM radio and Bluetooth.

SLEEP Timer

To set a sleep timer on your radio, press the 'SLEEP' button (Ref.3) repeatedly while the radio is ON. With each press, the timer duration will appear on the radio screen, showing options: OFF, 15 min, 30 min, 60 min, 90 min, or 120 min. Select your preferred option, and then press the 'ENTER' button (Ref.10) to confirm your choice.

DIMMER

Press the 'SNOOZE/DIMMER' (Ref.7) button repeatedly to set the radio display brightness in between : 'High-Medium- Low-OFF'.

ROOM TEMPERATURE SCALE

To switch the temperature scale to °C or °F, press and hold the 'SNOOZE/DIMMER' button (Ref.7) for 2-3 seconds. You will then see the room temperature in °C or °F displayed on the lower right-hand side of the radio screen.

Majority Darwin Radio: Setting the Time and Alarm

Majority Darwin radio has a digital clock that you can set manually. Follow these easy steps to adjust the time and set your alarm.

Setting the Time and Date:

In Standby mode, press and hold the 'SCAN/SET TIME' button (Ref.4) for 2-3 seconds. Press the 'PREV' (Ref.8) or 'NEXT' (Ref.9) buttons to choose between the 12-hour or

24-hour clock format. Press 'ENTER' (Ref.10) to confirm.

The hour digits will start flashing. Use the 'PREV' (Ref.8) or 'NEXT' (Ref.9) buttons to set the correct hour, then press 'ENTER' (Ref.10) to confirm.

The minute digits will now flash. Follow the same steps to set the minutes.

When promoted to set the date, please follow these same steps to adjust the year, month and day.

Setting the Time and Alarm

There are two alarms available – Alarm 1 and Alarm 2.

In Standby Mode, press and hold the 'ALARM' button (Ref.2) for 2-3 seconds to enter the alarm settings. The alarm icon you are about to set will flash on the display for Alarm 1 or for Alarm 2.

- **Step 1:** Set the alarm time by adjusting the hour digits with the 'PREV' (Ref.8) or 'NEXT' (Ref.9) buttons. Press 'ENTER' to confirm. The minutes will flash. Use the same method to set the minutes and confirm with 'ENTER'.
- **Step 2:** Set the alarm frequency. After setting your alarm time, choose how often you want the alarm to ring using the following options:
 - '01' – Alarm rings once.
 - '02' – Alarm rings daily.
 - '03' – Alarm rings on weekdays (Monday to Friday).
 - '04' – Alarm rings on weekends (Saturday and Sunday).

Use the 'PREV' (Ref.8) or 'NEXT' (Ref.9) buttons to scroll through the options.

When you've selected your desired frequency, press 'ENTER' to confirm."

- **Step 3:** Select the alarm sound. Choose either FM radio or Buzzer. If you select FM, the last played station will be used. Press 'ENTER' to confirm the alarm ring sound.
- **Step 4:** Adjust the alarm volume level. Use the 'PREV' (Ref.8) or 'NEXT' (Ref.9) buttons to choose the volume level and press 'ENTER' to confirm.

Once set, the alarm icon will appear on the screen. If no buttons are pressed when the alarm rings, it will sound for 60 minutes.

Snooze, turn off or cancel the alarm

Snooze:

When the alarm is ringing, press the 'SNOOZE/DIMMER' button (Ref.7) to delay the alarm by 10 minutes. You can snooze as many times as needed.

Turning Off the Alarm:

When the alarm is sounding, press the 'ALARM' button (Ref.2) to turn it off.

Cancelling the Alarm:

In Standby Mode, press the 'ALARM' button (Ref.2) once to cancel 'Alarm 1', again to cancel 'Alarm 2', and once more to cancel both alarms.

Viewing Alarm Details:

To view the alarm details already set, while the radio is in Standby Mode, press the 'ALARM' button (Ref.2) to select either Alarm 1 or Alarm 2. The radio will display the text 'ALARM 1' or 'ALARM 2'. If no alarm is set on that specific position, the radio will display the text 'NOT SET'.

Once the alarm icon is visible, press and hold the 'ALARM' button (Ref.2) for 2 seconds to view the settings. You only need to press 'ENTER' if you wish to make changes.

Please Note: When viewing the details of a set alarm, the alarm frequency is not displayed.

FM Radio

The Majority Darwin Radio can automatically scan and store the FM radio stations with good signal found at your location. Before scanning, ensure the radio pig-tail antenna is unwind and is fully extended to get the best radio signal.

FM Radio Mode & Scanning for stations

- Press the POWER/ MODE button (Ref.1), to switch to FM Radio Mode.
The 'FM' symbol will appear on the radio screen.
- Press the 'SCAN/SET TIME' button (Ref.4) to start an automatic scan. The radio will search for stations with good signal and store them as presets. When the search will be completed the first found station with good signal will start playing.

- To fine-tune a radio station found with weak signal or to manually scan press the 'PREV' (Ref.8) or the 'NEXT' (Ref.9) button and start searching up or down the FM band by 0.1MHz for each button press.
- To exit FM Mode, press the 'POWER/MODE' button (Ref.1) until the 'FM' symbol will no longer be visible.

Saving the FM stations as Presets

The Majority Darwin Radio has 30 preset slots available for saving FM radio stations, numbered from 'P01' to 'P30'.

After the automatic scan, the stations found will be saved as presets from P01 to P30.

To browse through the saved stations, press the '3+' button (Ref.13) repeatedly to go through the list. The preset number will be displayed on the radio screen with each button press, and in one second will start playing the station saved on that slot. You can change the order of saved FM stations and create your own list by manually storing the stations as per the following:

- Whilst playing a radio station that you would like to store on a specific position, press and hold for two seconds the '1' button (Ref.11) for 'Preset 1', the '2' button (Ref.12) for 'Preset 2', press the '3+' button (Ref.13) for 'preset 3' slots and onwards.
- The preset number 'PXX' will flash on the screen. Use the 'PREV' (Ref.8) or the 'NEXT' (Ref.9) buttons to choose a preset slot from P01 to P30. Press ENTER to confirm.

Please Note: If there is an existing radio station already saved on that position, the radio will overwrite with the newly saved one.

Recalling the FM stations presets

- Whilst in FM mode, to quickly recall 'Preset 1' or 'Preset 2', press the '1' (Ref.11) or '2' (Ref.12) buttons.
- To recall presets from 'P03' and beyond, press the '3+' button (Ref.13) repeatedly until the desired preset number shows on the display wait a second and the radio station saved on that slot will start playing. The station will automatically start playing after 2 seconds. There is no need to press the 'ENTER' button.

Please Note: When recalling presets do not press and hold the presets button as the radio will automatically go in 'storing presets' mode. In storing mode, the 'PXX' number will flash.

Bluetooth

The Majority Darwin Radio can be paired via Bluetooth with devices such as a phone or a tablet to play audio via the radio speaker.

- Press the 'POWER/MODE' button (Ref.1) to change the radio mode in Bluetooth. The 'BT' text will be flashing on radio screen, and a beep sound will be heard announcing that the radio is searching for a device to pair with.
- Go on your enabled Bluetooth device list and search for "Majority Darwin" to pair with the radio. Select the radio and confirm the connection. A beep sound, and the 'BT' text will stop flashing, to announce that the radio is paired with your device.
- Once paired, you can now start playing audio from your device via the radio speaker. Control the volume level from your device and the radio.

The operational range between the radio and a paired Bluetooth device is approximately 10 metres without any obstructions.

- Whilst in Bluetooth Mode, you can use the 'PREV' (Ref.8) and the 'NEXT' (Ref.9) buttons to skip and play the previous or the next track.
- To unpair /disconnect Bluetooth device from the radio, simply remove/disconnect "Majority Darwin" from your connected devices list.
- To pair the radio with a new device, remove from your Bluetooth device list that you previously connected and follow these steps.

Please Note: Majority Darwin Radio cannot be paired with Bluetooth earbuds.

Other Features

Wireless Charging

The wireless charging power is 10W. This feature can be used to charge a mobile phone.

Place a compatible device, on the wireless charging base located at the top of the radio

(Ref. 14). The charging symbol will appear on the radio screen whilst your device is charging.

Please Note: Before using wireless charging, ensure that your device is compatible with this type of charging. If your phone has a thick case, please remove before charging.

Headphone Jack

Insert wired headphones (not included) with a jack port of 3.5 mm into the headphones jack at the back of the radio (Ref. 18). Enjoy private listening in FM or Bluetooth Mode.

Please Note: Listening to audio set to a loud volume can damage your hearing. Before inserting the headphones, ensure the volume levels are set to minimum . Increase the volume level as per your preferences.

Backup battery

While the Majority Darwin should remain connected to its power cable at all times, the radio also includes a CR2025 back-up battery (inserted in the battery slot compartment). Remove the safety protection of the battery.

The back-up battery is used to retain the time and settings in the event of a power cut. Whilst running on back-up battery power, the radio itself will not operate, but it will keep the settings saved.

To replace the battery, remove the one you have on the radio and insert a new back-up battery type CR2025. Place the new battery face down into the battery compartment located at the back of the radio (Ref.19).

Troubleshooting

Observation	Potential Cause/Solution
No Power	Ensure the cable is properly inserted into the radio and plugged into a working wall socket.

No sound in FM Mode	<p>Try to manually tune the station using the 'PREV' and 'NEXT' buttons on the radio.</p> <p>Increase the volume on the radio by pressing the '+' button.</p>
Bluetooth is not working	<p>Ensure the radio is set to Bluetooth Mode and is not connected with another device.</p> <p>Remove the radio from your device list and follow the steps on page 9 to pair with a new device.</p>
Other functionality issues	<p>Disconnect the radio from the mains power and leave it switched off for 10 minutes . Plug the cable to main socket, then power on the radio. Check if the radio is in the correct mode.</p>

Support

If you require further assistance with your Majority Darwin radio, please contact our support team on the Majority website: www.majority.co.uk/support

Specification

Power Input	100-240V AC 50/60Hz
Power Output	DC 9.0V 2.22A
No load- power consumption	0.2 W
10% efficiency	79%
Average active efficiency	85.47%

Bluetooth version	5.4
Bluetooth range	10 metres range without walls or furniture obstacles
FM range frequency	87.5MHz- 108MHz
Dimensions (W x H x D)	175 x 80 x 150mm
Weight	642 grams

Warranty

All products come with a standard 12-month warranty. To validate your warranty and extend it to a total of three years, you must register your item within 30 days of purchase at www.majority.co.uk Simply use the menu to find 'Register Your Product'.

This service is free of charge.

Warning & Safety Information

- General Safety Information – Read and Retain: Review all safety and operating instructions before use; keep them for future reference. Follow Instructions: Adhere strictly to all safety and operational guidelines.
- Water Exposure: Keep the device away from water; avoid placing liquids near it.
- Ventilation: Ensure ventilation openings are unobstructed to prevent overheating.
- Heat Sources: Keep the device away from heat-emitting appliances.
- Wall Mounting – Installation Safety: Follow the manufacturer's instructions and use approved mounting kits only. Avoid drilling into areas with cables, gas, or water lines. Use proper tools and safety apparatus.
- Regular Maintenance: Inspect regularly for wear or damage, especially if wall-mounted.
- Relocation: Detach from the wall mount before moving.
- Child Safety: Keep out of children's reach and ensure heavy items are securely mounted.
- Seismic Precautions: Use specialized mounts in earthquake-prone areas.
- Electrical Safety – Power Source: Use the specified power source; consult an

electrician if unsure.

- Cable Management: Protect the power cord from damage.
- Power Disconnection: Keep the main plug accessible; unplug during storms or long periods of non-use.
- Battery Safety – Charging: Use the manufacturer’s charger; avoid extreme conditions.
- Heat Exposure: Keep batteries away from heat to prevent explosion or leakage.
- Battery Condition: Discontinue use if the battery is damaged; dispose of it properly.
- Replacement: Only use recommended batteries; incorrect types can cause hazards.
- External Batteries: Use only specified types, observing correct polarity.
- Battery Removal: Remove batteries if not used for an extended period.
- Disposal: Follow local regulations for battery disposal; do not incinerate.
- Connectivity Safety – Cable Connections: Power off devices before connecting or disconnecting cables. Bluetooth Pairing: Ensure a secure connection; avoid interference from other devices.
- Volume Control: Keep volume moderate to prevent hearing damage.
- Connectivity and Data Security – Wireless Security: Review privacy policies and secure your network.
- Software Updates: Keep software updated for security and performance.
- **Children’s Safety Warnings** – Product Use: Intended for adults; keep away from children. Battery Warning: Keep batteries and items containing batteries out of children’s reach.
- Volume Control: Maintain a safe volume level to protect children’s hearing.
- **Fire Hazard** – Flammable Materials: Do not place open flames near the product.
- **Overheating**: Avoid covering the product to prevent overheating and fire risks.
- Disposal and Recycling – Product Disposal: Dispose of at a recycling centre according to local laws. Environmental
- **Compliance**: Follow regulations for battery and electronic waste disposal.
- User Maintenance – Cleaning: Unplug before cleaning; use a dry cloth only. Servicing: Only qualified personnel should perform repairs.
- Data Protection: Reset to factory settings before returning or disposing of the product.
- Disclaimer: Failure to follow these instructions may result in injury, death, or property damage. The manufacturer is not liable for damage caused by improper use.

Declaration of Conformity:

We, Izilla Ltd, Newton House, 2 Pioneer Court, Histon, Cambridge, CB24 9PT declare under our sole responsibility that the product:

Product Name: Darwin Alarm Clock Model: 1000002996 Brand Name: Majority

Complying with the requirements or provisions of Council Directives which relate to: EMC Directive 2014/30/EU, RED Directive 2014/53/EU, LVD Directive 2014/35/EU, Directive (2011/65/EU) and its amendment directives 2015/863/EU (RoHS 2.0) of the, European parliament, ERP Directive 2009/125/EC.

All essential test suites have been carried out.

Point of Contact: Eddie Latham | Founder

Importer’s Addresses:

UK: iZilla Ltd, Newton House, 2 Pioneer Court, Histon, Cambridge, CB24 9PT

Email: techsupport@majority.co.uk


EU RP: AR Experts, Po Box 5047, 3620 AA Breukelen, The Netherlands

Email: info@ar-experts.eu

US: iZilla Ltd C/O A.N.Deringer Inc, 19520 Wilmington Ave, Rancho Dominguez, CA, 90220

Email: techsupport@majority.co.uk

Documents / Resources

	<p>MAJORITY Darwin Bedside Clock Radio [pdf] User Manual</p> <p>Darwin Bedside Clock Radio, Darwin, Bedside Clock Radio, Clock Radio, Radio</p>
---	---

References

- [User Manual](#)

Leave a comment

Your email address will not be published. Required fields are marked *

Comment *

Name

Email

Website

☐ Save my name, email, and website in this browser for the next time I comment.

Post Comment

Search:

e.g. whirlpool wrf535swhz

Search

[Manuals+](#) | [Upload](#) | [Deep Search](#) | [Privacy Policy](#) | [@manuals.plus](#) | [YouTube](#)

This website is an independent publication and is neither affiliated with nor endorsed by any of the trademark owners. The "Bluetooth®" word mark and logos are registered trademarks owned by Bluetooth SIG, Inc. The "Wi-Fi®" word mark and logos are registered trademarks owned by the Wi-Fi Alliance. Any use of these marks on this website does not imply any affiliation with or endorsement.