

MAJORITY
D100 Bookshelf
Speakers



MAJORITY D100 Bookshelf Speakers User Manual

[Home](#) » [MAJORITY](#) » MAJORITY D100 Bookshelf Speakers User Manual 

Contents

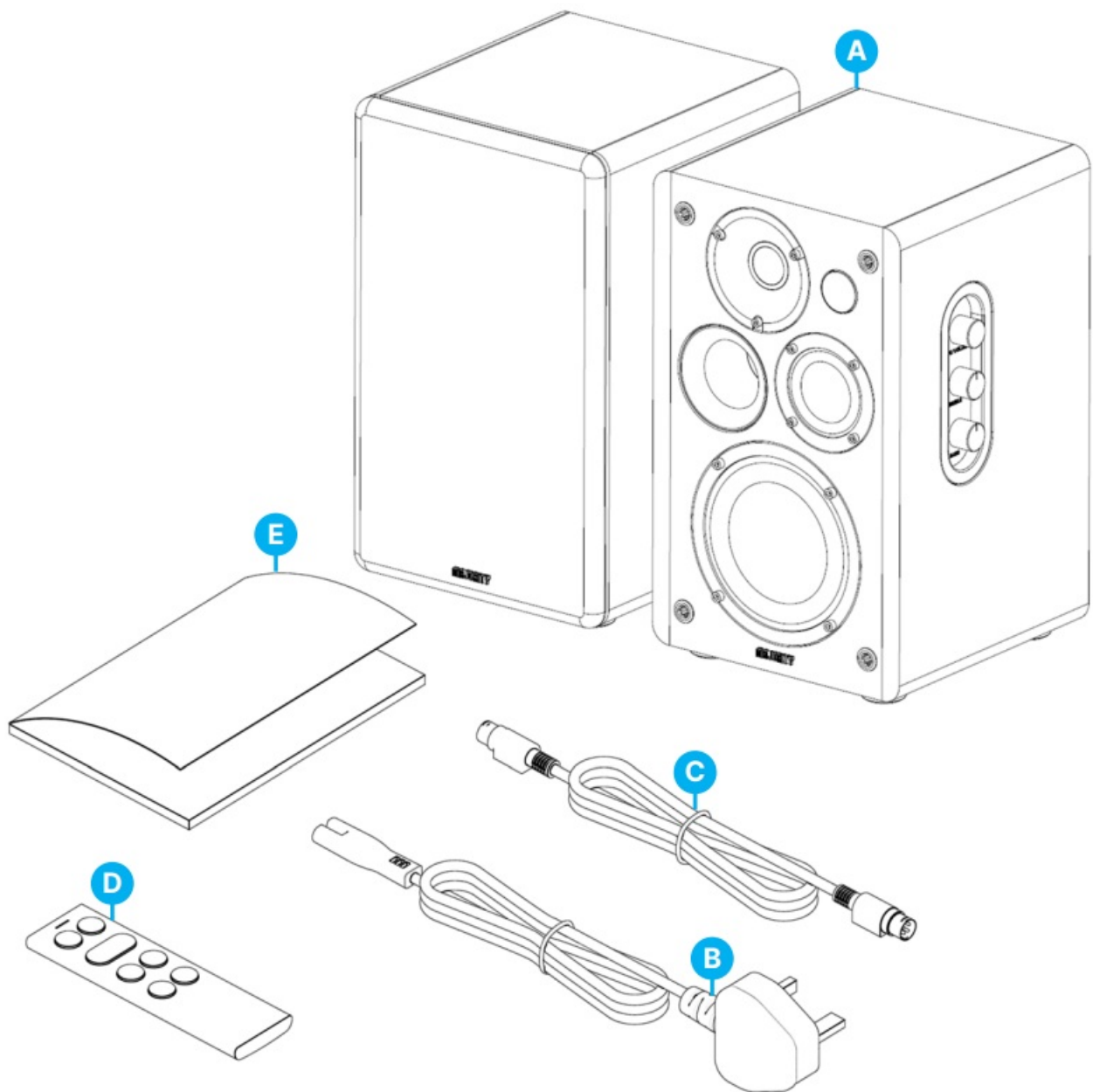
- [1 MAJORITY D100 Bookshelf Speakers](#)
- [2 What's in the Box?](#)
- [3 Controls & Functions](#)
- [4 Remote control usage](#)
- [5 Basic Operations](#)
- [6 HDMI ARC/ eARC Input](#)
- [7 Troubleshooting & Support](#)
- [8 FCC Compliance Statement](#)
- [9 Documents / Resources](#)
 - [9.1 References](#)

MAJORITY

MAJORITY D100 Bookshelf Speakers



What's in the Box?

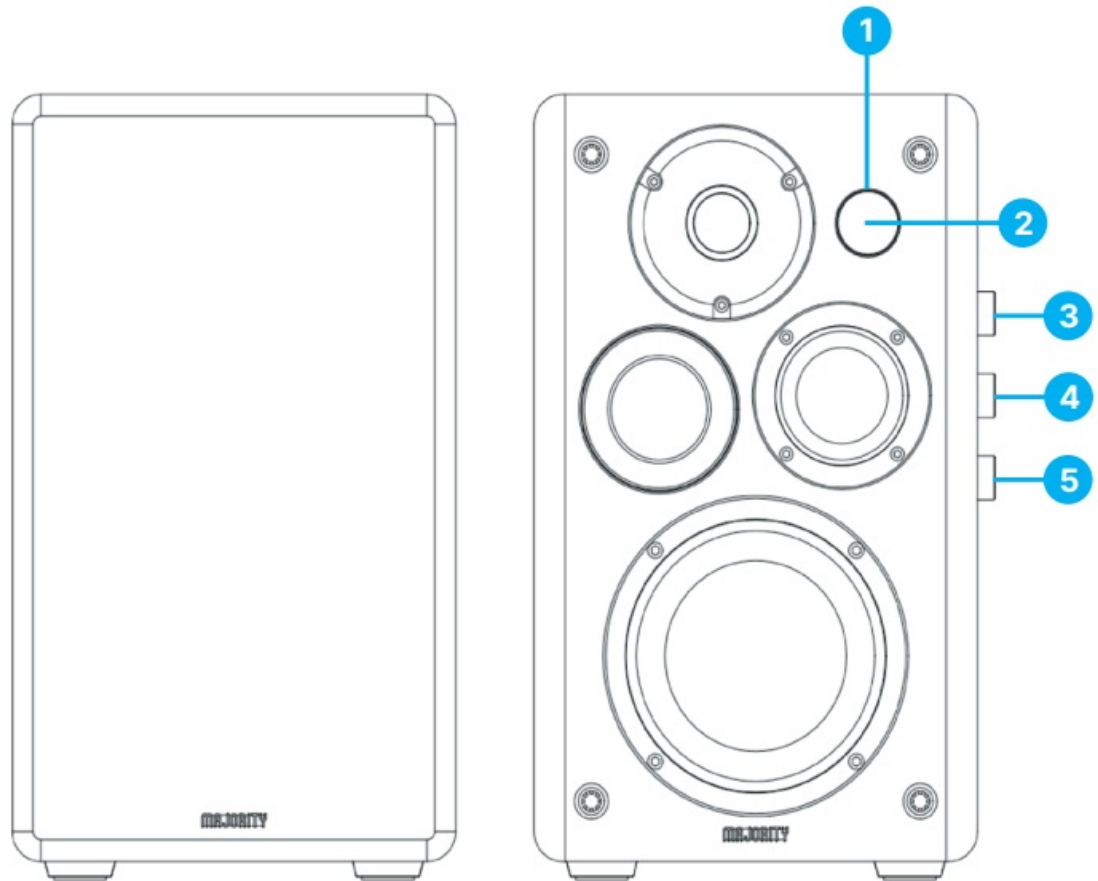


Box Contents

- A. Majority D100 speakers
- B. Power Cable
- C. Speakers connecting cable
- D. Remote Control
- E. User Manual

Controls & Functions

Front View



1. Power/ Standby LED Light Indicator.

- The red light indicates that the speakers are in Standby Mode.
- The green light indicates that the speakers are switched on (working mode).

2. Remote Control Sensor

3. Input / Volume Knob

- Press to power on the speakers.
- Press and hold for 4-5 seconds to power off.
- Press to change the mode.
- Rotate to increase/decrease the volume.

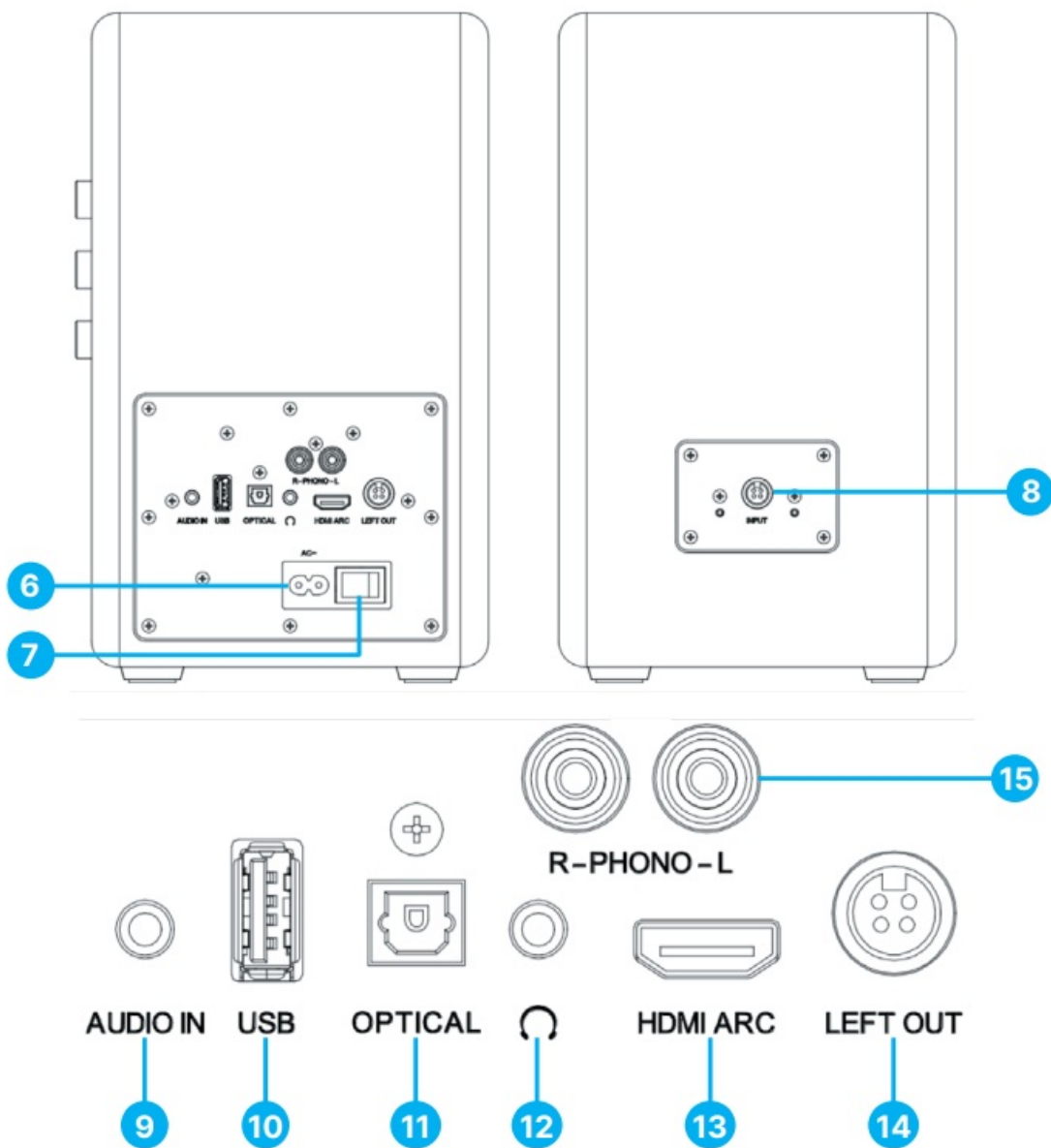
4. Treble Rotary Knob.

- Rotate to increase/decrease the treble.

5. Bass Rotary Knob.

- Rotate to increase/decrease the bass.

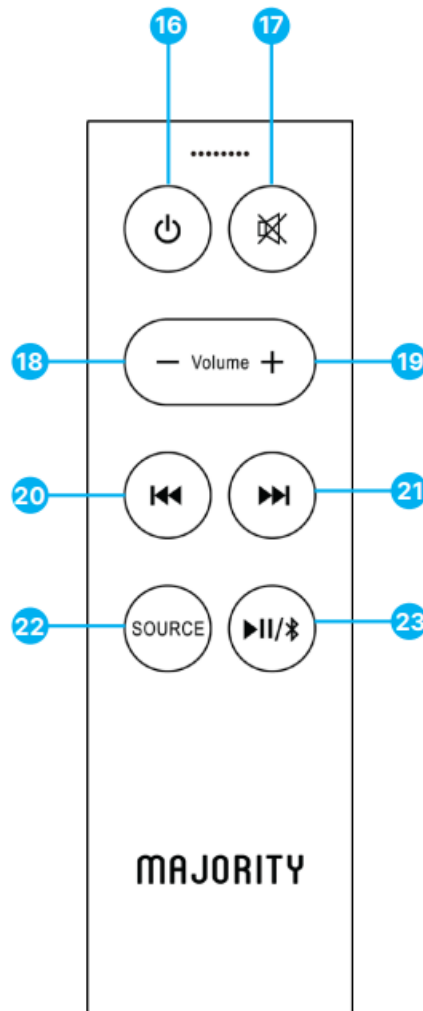
Back View



- 6. AC IN Port 11. Optical Input
- 7. Power switch 12. Headphone Socket
- 8. Speaker connecting Port 13. HDMI ARC Port
- 9. Audio Input 14. Connecting the Port with the left speaker
- 10. USB Port 15. Phono Input Port

PLEASE NOTE: The USB port is only to be used for playback from a USB stick or for charging a mobile phone using a USB cable (not included). See page 10 for details

Remote Control



11. Power ON/ Standby Mode

12. Mute

- Press to mute or resume sound.
- Press and hold for 4-5 seconds to hear which mode the speakers are in.

13. Volume –

14. Volume +

15. 'Previous'.

- Press to skip and play the previous track in Bluetooth or USB Mode.

16. 'Next'.

- Press to skip and select the next track in Bluetooth and USB Mode.

17. Source (Mode).

- Press to change the source/ speaker's mode in between BTUSB-AUDIO-PHONO-HDMI OPTICAL

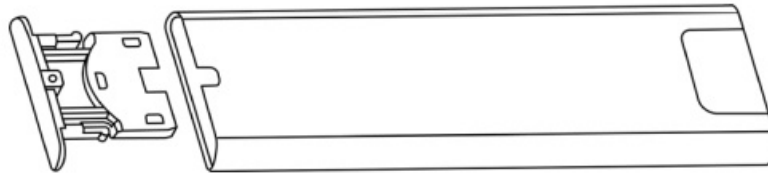
18. Play/Pause/BT

- Press to play or pause in Bluetooth and USB playback mode.
- Press and hold down for 2-4 seconds to activate Bluetooth pairing with another device while in Bluetooth Mode, or to disconnect from other paired devices.
- While in HDMI or Optical Mode press and hold for 4-5 seconds to change the sound volume to Level 1. Press and hold again to change to Level 2, and again for Level 3.

PLEASE NOTE: Levels 1,2 & 3 represent small, medium, and large volumes. These are only available when connecting via HDMI ARC or Optical.

Remote control usage

Prepare your remote for usage. Open the battery slot, and position CR2032 the battery into its slot as per this diagram.



Remote Control Operational Range

The remote control sensor on the front of the unit is sensitive to the remote control commands of up to a 5-meter distance and within a maximum of a 60° arc.

PLEASE NOTE: The operating distance may vary depending on the brightness of the room.



Basic Operations

PLEASE NOTE: The instructions within this user manual will refer to the D100's button number on the main speaker e.g. (Ref. 'number') and to the remote control buttons e.g. (Rem. 'number'), by the diagrams from pages 4-6. Remove all packaging and prepare the D100 Speakers for your set-up. Connect both speakers using the connecting cable, insert one end on the back of the left speaker (Ref.8) into the connecting port and the other end

into the Speaker output port (Ref.14) on the back of the main speaker.

Position the speakers on the left and right-hand side of the device you are about to connect with. Using the power adaptor provided, plug one end into the AC IN power cable port – this can be found at the back of the primary speaker (Ref.6). Plug the other end into a mains socket. Ensure all cables are properly connected before switching the Majority of D100 Speakers on.

Power On/ Standby Mode

Ensure the switch button at the back of the main speaker is set to ON (Ref.7). When you connect the unit for the first time to the power supply, the unit will automatically switch on. Press the 'Power On/Standby' button on the remote control (Rem.16) or press and hold the 'Input/Volume' (Ref.3) on the unit to switch to Standby Mode and the POWER indicator will show a red light.

Press the button 'Power On/Standby' on the remote control (Rem.16) or press the 'Input/ Volume' button on the unit again to switch the unit back on. The POWER indicator will show a green light to confirm it is switched on. Disconnect the power supply if you want to switch OFF the unit completely.

Important Note

The majority of D100 Speakers are equipped with an energy-saving mode. If there is no activity/signal received from a connected device for up to 19 minutes, then the speakers will automatically switch to Standby Mode to save energy (ERP 2 standard). If the volume level of the audio source connected with the speakers is set to a minimum, the D100 might recognize this as 'No Audio Signal'. This will affect the capability of signal detection and can also lead to the unit automatically switching to Standby Mode. If this happens, please reactivate the audio signal transmission or increase the volume level on your audio source to resume playback.

Changing the audio play mode

Press the 'Source' button on the remote control (Rem.22) repeatedly to change the playing mode: BT-USB-AUDIO-PHONO-HDMI ARC-OPTICAL. Alternatively, press the 'Input/Volume' button (Ref.3) on the speaker repeatedly. A voice message will announce each mode.

Adjust the Volume Level

Press the 'Volume +/-' buttons to adjust the volume- the POWER indicator will flash a green light when doing so. To turn off the sound press the 'Mute' button on the remote control (Rem.17). Press once again to resume normal listening.

PLEASE NOTE: When increasing or decreasing the volume, each button press generates a green LED light flash. When you reach the maximum volume level, the green LED light will stop flashing.

If you adjust the volume to maximum and then power off, when you power on again, the volume level will automatically be restored to the factory setting at a lower level. Sound equalizers (only with remote use). While in HDMI or Optical mode, you can use sound equalizers to enhance the sound as per your preferences. Press and hold the 'Play/Pause' button (Ref.23) on the remote control for 4-5 seconds to select one of the equalizers named 'Level 1', 'Level 2' or 'Level 3'.

Bluetooth Mode (BT)

The Majority of D100 Speakers can be paired via Bluetooth with a device such as a smartphone tablet or any other Bluetooth-enabled device to play audio via the speakers.

- Ensure the D100 Speakers are powered on before connecting with another Bluetooth-enabled device.
- Change the speaker's mode to Bluetooth by pressing and holding the Bluetooth button on the remote control (Rem.23) for 4-5 seconds. Alternatively, press the ' Source' button on the remote control (Rem.22) repeatedly to enter Bluetooth.
- Mode. A voice message will announce the mode. The speakers will then start searching for a device to pair with.

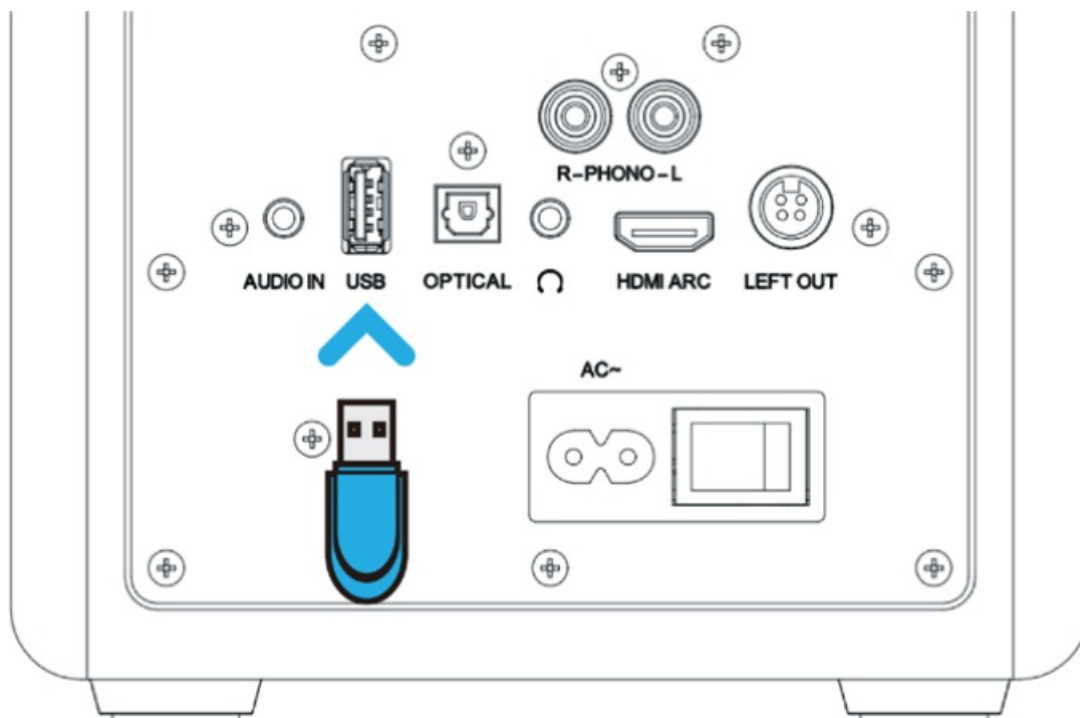
- Activate Bluetooth on your device that you want to pair with the speakers. Search and select “Majority D100” from the device’s list of Bluetooth connections. Once successfully connected, you will hear a voice message saying, “BT connected”, indicating that you have successfully paired the speakers with your Bluetooth device. You can now start playing audio from your device.
- **PLEASE NOTE:** If the Majority of D100 Speakers are already paired with a device and you wish to connect with a different one, you must press and hold the ‘Bluetooth’ button (Rem.23) for 3 seconds to unpair from the device, and then follow the pairing instructions to connect with the new one.
- The operational Bluetooth range between the speakers and a Bluetooth-enabled device is up to 8 meters without any obstacles or objects blocking the connection.
- While in Bluetooth mode, if you wish to reconnect to a previously paired device, ensure your device is within the operational range and is still connected to the
- The majority of D100 from your devices list.
- The Majority of D100 are not compatible with Bluetooth headphones or earbuds.

USB Port Usage

USB Charging Port

The USB port on Majority D100 can be used as a charging port for phones or similar devices. Connect your phone using a USB cable (not included) and insert it into the speaker’s USB port (Ref.10).

PLEASE NOTE: The output voltage of the USB port is 5V/1000mA, therefore not all devices are guaranteed to charge using this port. Please check your device specifications/manual before connecting with the speaker’s USB port for charging. A mobile phone can be charged while the speakers are in Standby or Operating Mode. If the working mode is changed to Standby Mode, the phone will stop charging for 2 seconds and then continue charging.



USB Playback Port

The Majority of D100 speakers can be connected with a USB mass storage device, USB stick, and USB flash player to play audio via the speakers.

- Insert the USB device into the USB port at the back of the main speaker (Ref.10).

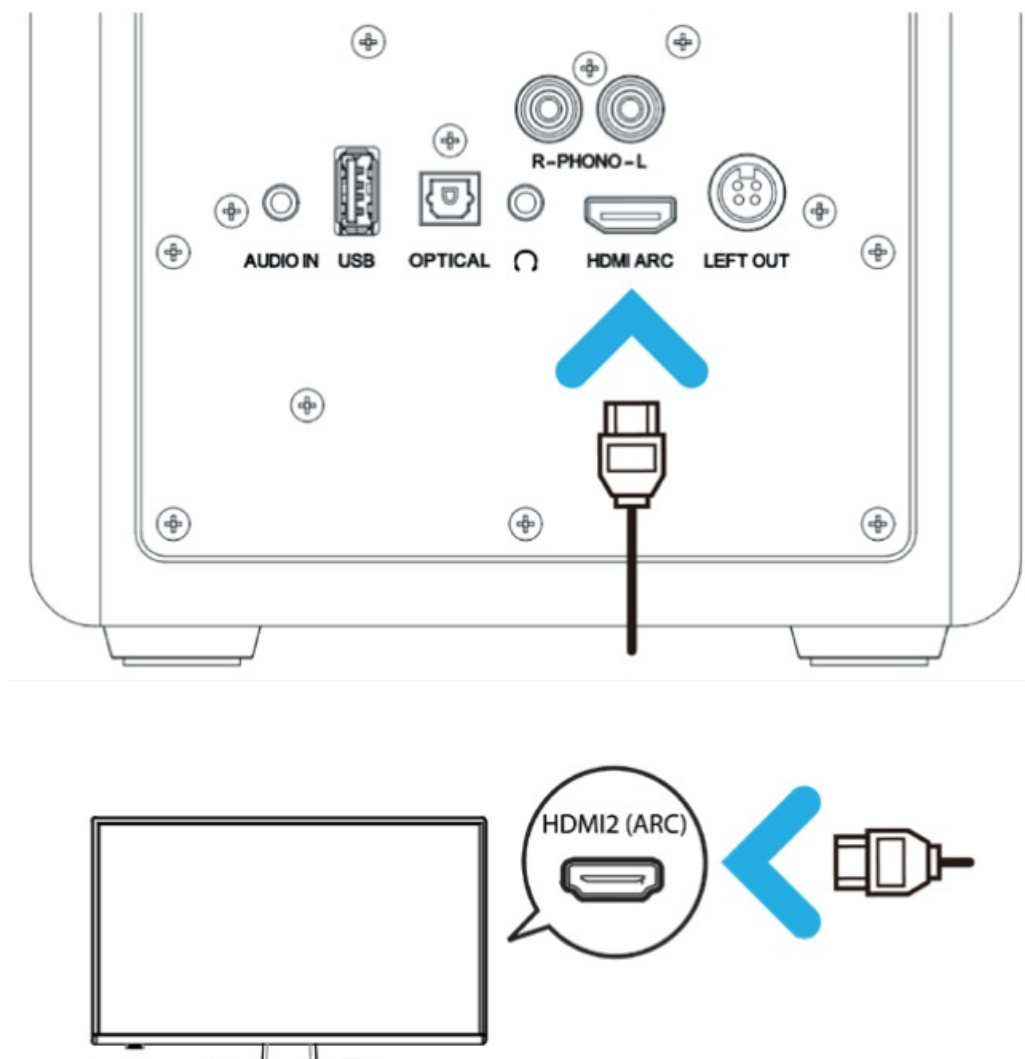
- Press the 'Input/Volume' button on the main speaker (Ref.3) or the 'Source' button on the remote control (Rem.22) repeatedly to change the speaker's mode to USB Mode. A voice message will be heard announcing the mode.
- The stored audio files on the USB device will automatically start playing.

PLEASE NOTE: The USB playback port can be used with a USB stick/drive type 2.0, of up to 2T size. The audio formats supported are MP3 and WMA.

HDMI ARC/ eARC Input

The Majority of D100 Speakers can be connected to a TV with compatible HDMI-CEC and ARC (Audio Return Channel).

- Using an HDMI high-speed cable that supports the ARC function (not included), insert one end into the HDMI port on the rear of the main speaker (Ref.13) and the other end into the HDMI ARC port on the TV.
- Press the 'Input/Volume' button on the main speaker (Ref.3) or the 'Source' button on the remote control (Rem.22) repeatedly to change the speaker's mode to 'ARC'. A voice message will confirm the ARC Mode.
- Adjust your TV audio settings to HDMI audio, and enable HDMI-CEC and ARC functions. The sound will then be heard via D100.

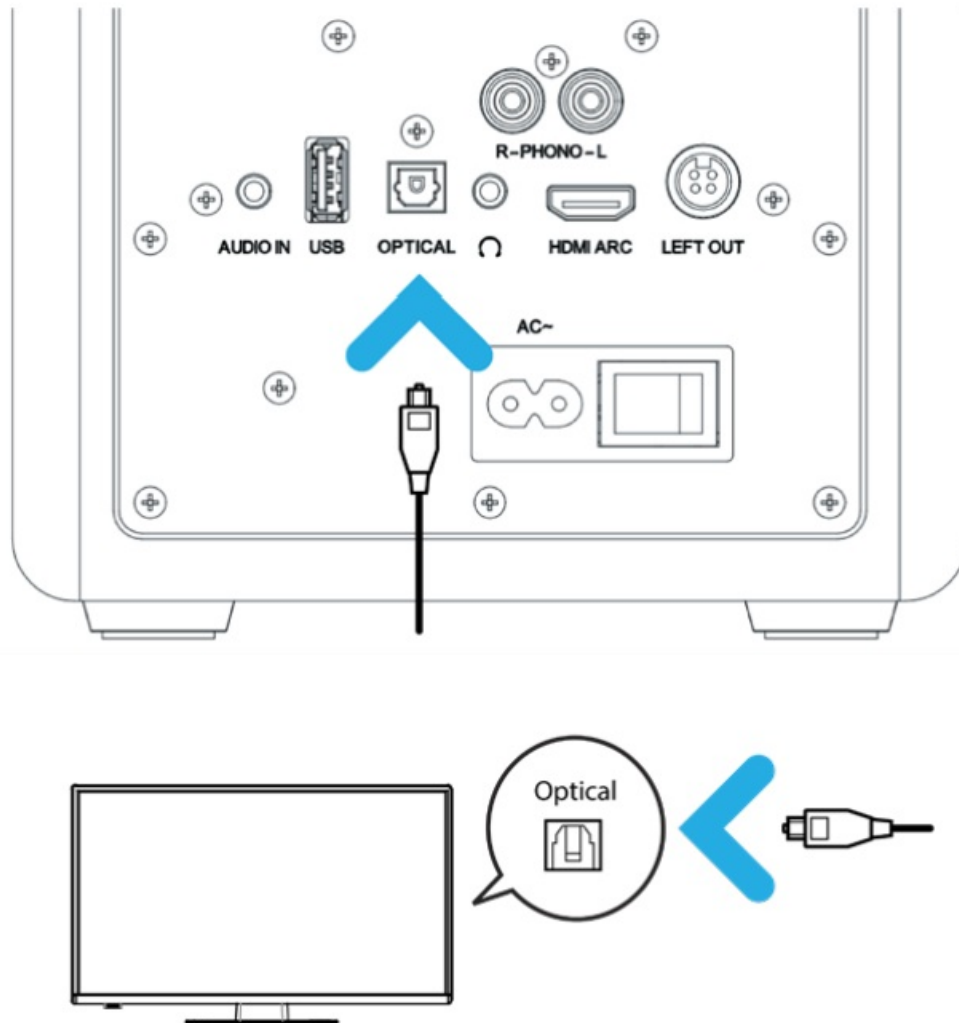


PLEASE NOTE: If your TV is not HDMI-CEC and ARC or the CEC protocol is inconsistent, resulting in no sound, you must use a different type of cable connection to play sound from your TV through the Majority D100 Speakers.

Optical & Phono Input

Using the Optical Input, you can connect the Majority D100 with a TV/DVD/SET BOX, output using an optical cable.

- Insert one end of the optical cable into the optical input port on the rear panel of the main speaker (Ref.11) and the other end into your device's optical output port.
- Press the 'Input/Volume' button on the main speaker (Ref.3) or the 'Source' button on the remote control (Rem.22) repeatedly to change the speaker's mode to 'Optical'. A voice message will confirm you are using Optical Mode.
- Adjust the audio settings on your device, if required to Optical/Audio and PCM.



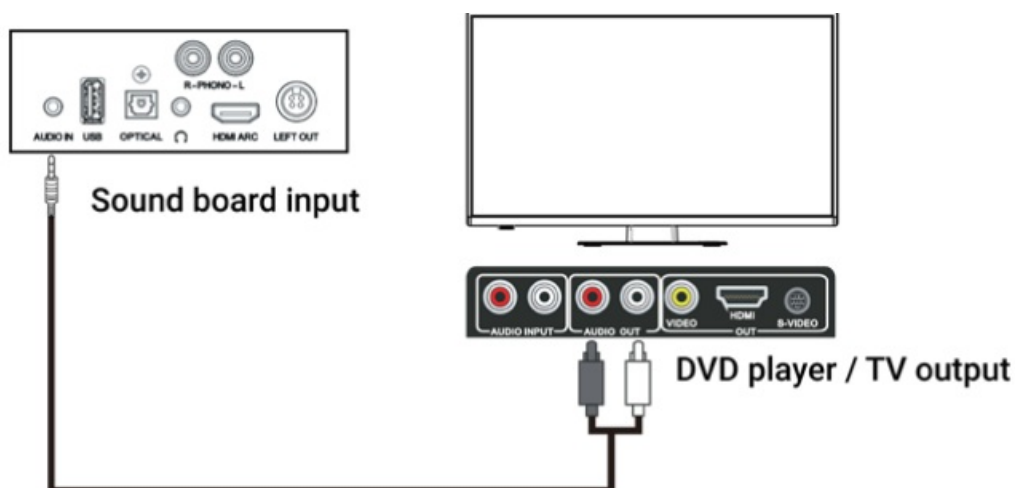
Using the Phono Input port, you can connect the Majority D100 with a turntable/ record player using a phono cable.

- Insert the phono cable into the turntable/ record player and the other ends into the phono port on the back of the main speaker (Ref.15).
- Press the 'Input/Volume' button on the main speaker (Ref.3) or the 'Source' button on the remote control (Rem.22) repeatedly to change the speaker's mode to 'PHONO'.
- Start playing audio from your turntable/record player via Majority D100 Speakers.

AUDIO (Analogue) Input

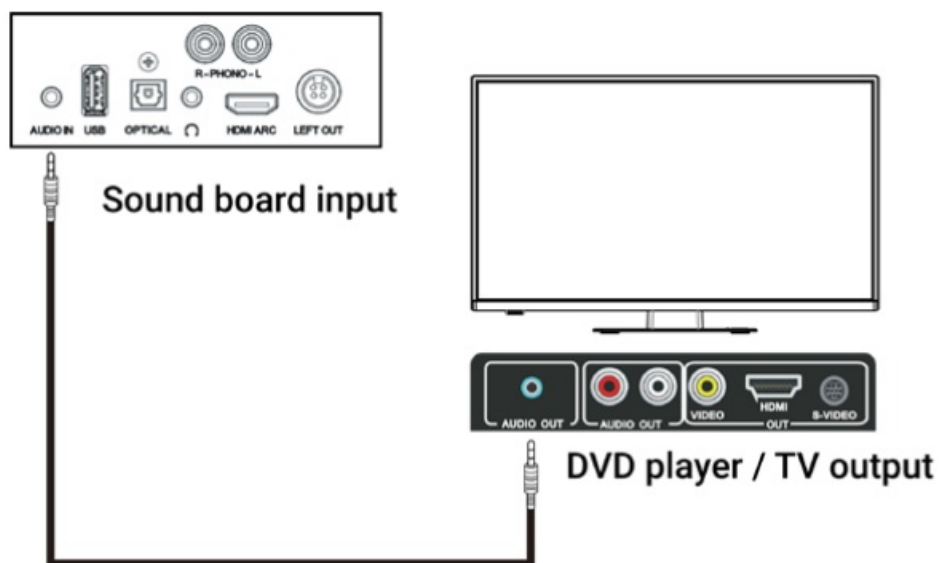
The Majority of D100 Speakers can be connected to an audio source using the 'audio input' port with a TV/ PC/ DVD Player. For this, you can use two different cable types such as AUX (3.5mm jack) to RCA, or AUX(3.5 mm) to

AUX (3.5 mm).



AUX (3.5 mm) to RCA

- Use an analog audio cable AUX cable with a 3.5 mm jack that can be inserted into the main speaker, audio input port (Ref.9), and the RCA end into the audio source.
- Press the 'Input/Volume' button on the main speaker (Ref.3) or the 'Source' button on the remote control (Rem.22) repeatedly to change the speaker's mode to AUDIO.
- AUX (3.5 mm) to AUX (3.5 mm).



- Connect your TV/DVD Player/Tablet AUX Output Port to the Majority D100 main speaker's Audio Input Port (Ref.9) using an AUX-to-AUX cable of 3.5 mm.
- Press the 'Input/Volume' button on the main speaker (Ref.3) or the 'Source' button on the remote control (Rem.22) repeatedly to change the speaker's mode to AUDIO.

Troubleshooting & Support

Observation	Potential Cause/Solution
No sound	<p>Check if all cables are correctly inserted. Check if the speakers are set in the correct mode based on audio source used.</p> <p>Check if the speakers are muted.</p> <p>HDMI connection- If your TV is not HDMI-CEC and ARC or the CEC protocol is inconsistent, you must connect an audio cable to play sound from your TV through the Majority D100 Speakers.</p> <p>Ensure that the audio setting of the input source (e.g. TV, game console, DVD player, etc.) is set to PCM mode while using Optical, AUX, and HDMI(ARC) connection.</p>
No power	<p>Ensure that the mains cable is connected securely.</p> <p>Ensure the unit is switched on.</p>
Bluetooth connection	<p>Ensure the D100 are in Bluetooth mode, and your device has Bluetooth activated before pairing.</p> <p>Ensure the D100 are not paired with other devices. If this is the case, please disconnect, and then follow the pairing steps again.</p> <p>Keep a distance from the device at a range of less than 10 metres.</p>
The speakers automatically switches off while playing	<p>Increase the volume level on your device and on the speakers.</p>
Function disturbance	<p>Switch the speakers off, disconnect from other devices and unplug. Leave the speakers off for a few minutes, and then plug these back in and connect again with your device, then power on the speakers.</p>

Support

If you require further assistance with your Majority D100 Bookshelf speakers, please contact our tech support team on the Majority website: www.majority.co.uk/support

Specification & Warranty

Product Specifications

Power Supply	AC100-240V~50/60Hz
Power Consumption(standby mode)	< 0.5 Watt
Bluetooth version	5.3
Bluetooth range	Up to 10 metres
USB Playback stick/drive	Up to 2T
Audio supported formats	MP3/ WMA
Dimensions	170 x 182 x 275 MM per speaker

Warranty

All products come with a standard 12-month warranty. All items must be registered within 30 days of purchase, on www.majority.co.uk for the warranty to be valid. Once on the web page, use the menu to find 'Register Your Product'. You will also be given the chance to extend your warranty for an additional 24 months, free of charge.

The digital user manual is available in English, German, Spanish, Italian, and French on our website majority.co.uk/user-manuals/

Warning & Safety Information

Safety and Usage Guidelines (All where applicable)

General Safety Information – Read and Retain: Review all safety and operating instructions before use; keep them for future reference. Follow Instructions: Adhere strictly to all safety and operational guidelines. Water Exposure: Keep the device away from water; avoid placing liquids near it. Ventilation: Ensure ventilation openings are unobstructed to prevent overheating.

Heat Sources: Keep the device away from heat-emitting appliances. Wall Mounting – Installation Safety: Follow the manufacturer's instructions and use approved mounting kits only. Avoid drilling into areas with cables, gas, or Water lines. Use proper tools and safety apparatus. Regular Maintenance: Inspect regularly for wear or damage, especially if wall-mounted. Relocation: Detach from the wall mount before moving.

Child Safety: Keep out of children's reach and ensure heavy items are securely mounted. Seismic Precautions: Use specialized mounts in earthquake-prone areas. Electrical Safety – Power Source: Use the specified power source; consult an electrician if unsure. Cable Management: Protect the power cord from damage. Power Disconnection: Keep the main plug accessible; unplug it during storms or long periods of non-use. Battery Safety – Charging: Use the manufacturer's charger; avoid extreme conditions. Heat Exposure: Keep batteries away from heat to prevent explosion or leakage.

Battery Condition: Discontinue use if the battery is damaged; dispose of it properly. Replacement: Only use recommended batteries; incorrect types can cause hazards. External Batteries: Use only specified types, observing correct polarity. Battery Removal: Remove batteries if not used for an extended period. Disposal: Follow local regulations for battery disposal; do not incinerate. Connectivity Safety – Cable Connections: Power off devices before connecting or disconnecting cables. Bluetooth Pairing: Ensure a secure connection; avoid interference from other devices. Volume Control: Keep volume moderate to prevent hearing damage.

Connectivity and Data Security – Wireless Security: Review privacy policies and secure your network. Software Updates: Keep software updated for security and performance. Children's Safety Warnings – Product Use: Intended for adults; keep away from children. Battery Warning: Keep batteries and items containing batteries out of children's reach. Volume Control: Maintain a safe volume level to protect children's hearing. Fire Hazard – Flammable Materials: Do not place open flames near the product. Overheating: Avoid covering the product to

prevent overheating and fire risks. Disposal and

Recycling – Product Disposal: Dispose of at a recycling center according to local laws. Environmental Compliance: Follow regulations for battery and electronic waste disposal. User Maintenance – Cleaning: Unplug before cleaning; use a dry cloth only. Servicing: Only qualified personnel should perform repairs. Data Protection: Reset to factory settings Before returning or disposing of the product. Disclaimer: Failure to follow these instructions may result in injury, death, or property damage. The manufacturer is not liable for damage caused by improper use.

FCC Compliance Statement

This device complies with part 15 of the FCC Rules. Operation is subject to the following two conditions:

- (1) This device may not cause harmful interference, and
- (2) this device must accept any interference received, including interference that may cause undesired operation.

Note: This equipment has been tested and found to comply with the limits for a Class B digital device, under Part 15 of the FCC Rules. These limits are designed to provide reasonable protection against harmful interference in a residential installation. This equipment generates, uses, and can radiate radio frequency energy and, if not installed and used by the instructions, may cause harmful interference to radio communications.

However, there is no guarantee that interference will not occur in a particular installation. If this equipment does cause harmful interference to radio or television reception, which can be determined by turning the equipment off and on, the user is encouraged to try to correct the interference by one or more of the following measures:

- Reorient or relocate the receiving antenna.
- Increase the separation between the equipment and the receiver.
- Connect the equipment to an outlet on a circuit different from that to which the receiver is connected.
- Consult the dealer or an experienced radio/TV technician for help.

Warning: Changes or modifications to this unit not expressly approved by the part responsible for compliance could void the user's authority to operate the equipment.

FCC Radiation Exposure Statement

This equipment complied with FCC radiation exposure limits set forth for an uncontrolled environment. This equipment should be installed and operated with a minimum distance of 20cm between the radiator & your body.

Declaration of Conformity

We, Izilla Ltd, Newton House, 2 Pioneer Court, Histon, Cambridge, CB24 9PT declare Under our sole responsibility that the product:

Product Name: D100 Bookshelf Speakers Model: 1000002995 Brand Name: Majority

To which this declaration referred conforms to the following harmonized standards or normative documents (CE & Rohs 2.0) ;

EN 55035:2017, EN 55032:2015, EN61000-3-2:2014, EN61000-3-3:2013, EEN62368- 1:2004+A11:2017, ETSI EN 301 489-1 V2.2.3(2019-11), ETSI EN 301 489-17, V3.2.2(2019-12), ETSI EN 300 328 V2.2.2 (2019-07), EN 62479: 2010, IEC 62321-3- 1:2013, IEC 62321-4:2013, IEC 62321-5:2013, IEC 62321-6:2015, IEC 62321-7-1:2015, IEC 62321-7-2:2017, IEC 62321-8:2017, (EC)NO 1275/2008,EN50564:2011, (EC)NO 801/2013.

Complying with the requirements or provisions of Council Directives which relate to: EMC Directive 2014/30/EU, RED Directive 2014/53/EU, LVD Directive 2014/35/EU, Directive (2011/65/EU) and its amendment directives 2015/863/EU (RoHS 2.0) of the European Parliament, ERP Directive 2009/125/EC. All essential test suites have been carried out. Point of Contact: Eddie Latham | Founder

Importer's Addresses

UK: Zilla Ltd, Newton House, 2 Pioneer Court, Histon, Cambridge, CB24 9PT

Email: techsupport@majority.co.uk

EU RP: AR Experts, Po Box 5047, 3620 AA Breukelen, The Netherlands


Email: info@ar-experts.eu

US: Zilla Ltd C/O A.N.Deringer Inc, 19520 Wilmington Ave, Rancho Dominguez, CA, 90220

Email: techsupport@majority.co.uk

IMPORTANT: Please read all instructions carefully before use and keep them for future reference.

Documents / Resources

	<p>MAJORITY D100 Bookshelf Speakers [pdf] User Manual 2BLP8BS5302, 2BLP8BS5302 bs5302, D100 Bookshelf Speakers, D100, Bookshelf Speakers, Speakers</p>
---	--

References

- [Majority – Home Audio | DAB & Internet Radios | Soundbars](#)
- [Support – Majority](#)
- [Yahoo is part of the Yahoo family of brands](#)
- [User Manual](#)

Manuals+, Privacy Policy

This website is an independent publication and is neither affiliated with nor endorsed by any of the trademark owners. The "Bluetooth®" word mark and logos are registered trademarks owned by Bluetooth SIG, Inc. The "Wi-Fi®" word mark and logos are registered trademarks owned by the Wi-Fi Alliance. Any use of these marks on this website does not imply any affiliation with or endorsement.