



MAJORITY 2IR Internet Radio and Adapter Installation Guide

[Home](#) » [MAJORITY](#) » MAJORITY 2IR Internet Radio and Adapter Installation Guide 

MAJORITY 2IR Internet Radio and Adapter Installation Guide

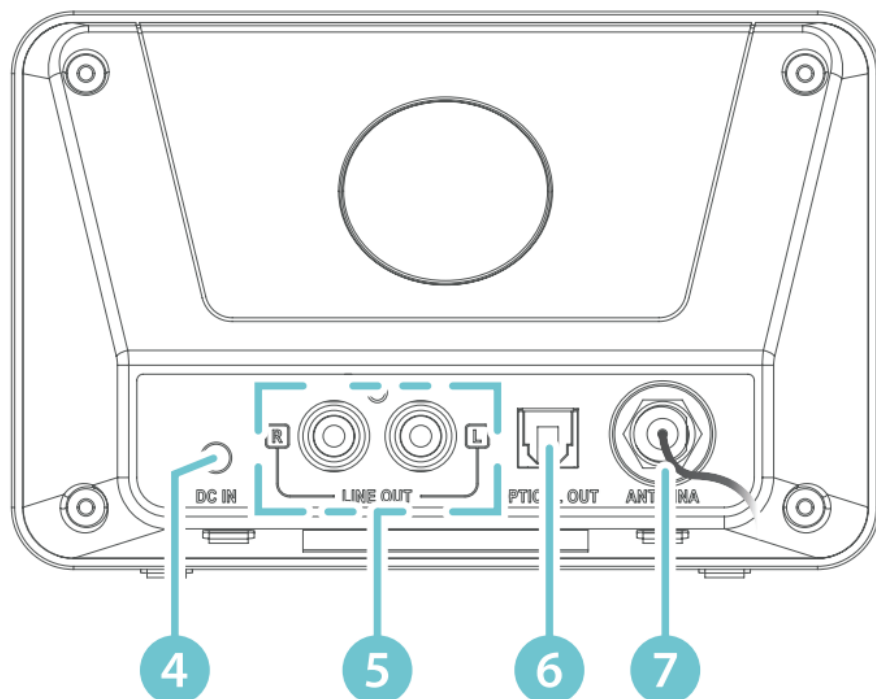


Contents

- [1 Controls And Functions](#)
- [2 What's In the Box?](#)
- [3 Instructions Guide](#)
- [4 Instructions Guide](#)
- [5 Info](#)
- [6 Privacy policy](#)
- [7 Back light](#)
- [8 FM Operation](#)
- [9 Bluetooth Operation](#)
- [10 Spotify Connect](#)
- [11 Maintenance](#)
- [12 Documents / Resources](#)
 - [12.1 References](#)
- [13 Related Posts](#)

Controls And Functions

Front view

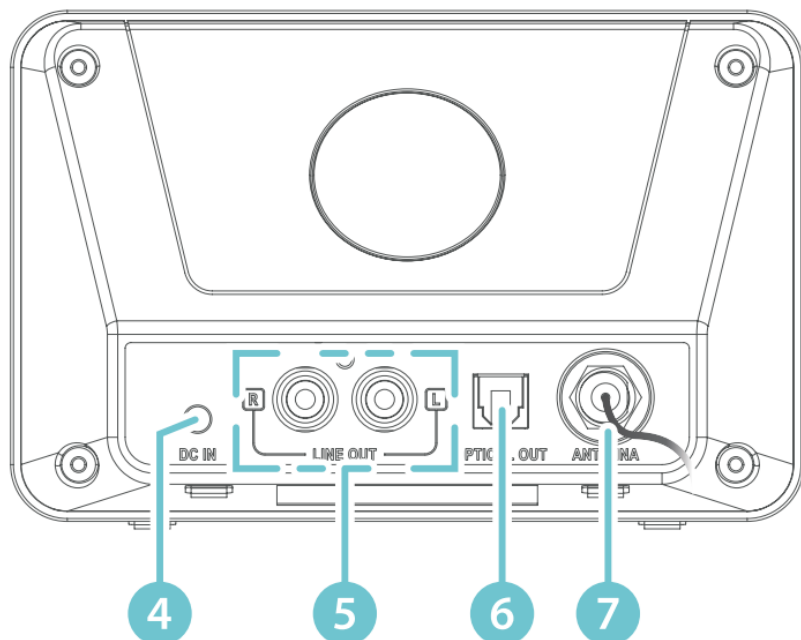


1. DISPLAY

2. q Button

3. REMOTE CONTROL SENSOR

Rear view



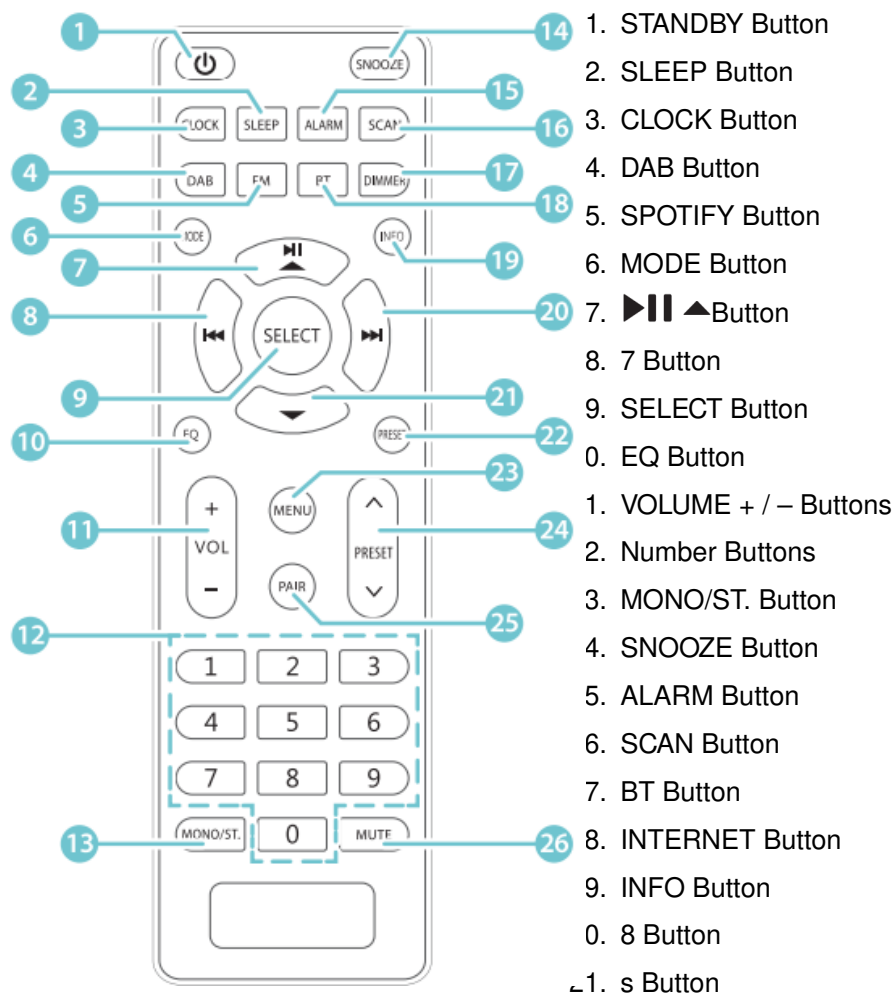
2. DC IN SOCKET

3. LINE OUT SOCKET (RCA Jack)

4. OPTICAL OUT CONNECTION

5. ANTENNA

Remote control



- 22. PRESET Button
- 23. MENU Button
- 24. PRESET . / , Buttons
- 25. BACK Button
- 26. MUTE Button

What's In the Box?

Box Contents

- A. Main Unit
- B. Instruction Manual
- C. ANTENNA
- D. Mains Adapter
- E. Remote

Instructions Guide

Battery Replacement for the Remote Control

1. Press down the battery cover at “ ” and push the battery cover outwards in the direction of the arrow.
2. Insert 2 x AAA 1.5V alkaline batteries (not included). Make sure to match the (+) and (-) ends of the battery with the (+) and (-) ends indicated in the battery compartment.
3. Close the cover.

Handling the Battery

- Improper or incorrect use of batteries may cause corrosion or battery leakage, which could cause fire, personal injury or damage to property.
- Only use the battery type indicated in this manual.
- Do not dispose of the used battery as domestic waste. Dispose of it in accordance with local regulations.
- Remove the battery from the remote control when not in use for a long period of time, as corrosion or battery leakage may occur and result in physical injury, and/or property damage, and/or fire.

Remote control operation range

The remote control sensor on the front unit is sensitive to the remote control's commands up to a maximum of 4 metres away and within a maximum of 60° arc.

Note that the operating distance may vary depending on the brightness of the room.

Connection

1. The audio output (analogue) and optical out (digital) are available on the back of the unit to connect A/V amplifier or HiFi system.
2. Unwind the antenna included to the desired length and insert into the 'Antenna' port on the back of the unit.
3. Unwind the mains adapter cable to its full length. Connect the end of the cable to the DC IN Socket at the DC IN Socket at the rear of the unit and then insert the power adapter into the mains socket. Make sure the mains adapter is firmly inserted into the power socket. The unit is now ready to use.

Connecting the unit to any other power source may damage the unit.

4. To switch the unit on completely, unplug the power adapter from the mains socket.

Network Connection

1. This product only supports wireless network connection for networking access and does not support wired LAN Connection.

Wireless network

2. Check first of all whether the control lamps (LINK/ACT) of your router light up.
3. Proceed with the operations described in the below "Getting Started". It is recommended to run through the setup wizard in the System Settings section.

This unit cannot be connected to a standalone modem directly. A router or a modem connected to a router has to be used.

Since there are various connection configurations, please follow the specifications and instructions of your telecommunication carrier, Internet service provider, and router setting guidebook.

Getting Started

This instruction manual explains the basic instruction for operating this unit. Unless otherwise stated, all operations described are based on remote control use.

Powering ON/OFF

1. Press the **q** button on unit or remote control to switch the unit on.

2. Press the **q** button on unit or remote control to switch the unit back to standby

Selecting Modes

Press **MODE** button on remote control to access Mode Menu. Press **7 / 8** button to switch between different sources: Internet Radio, Podcasts, Spotify, DAB, FM and Bluetooth. Press **SELECT** button to confirm.

When the unit is idle for approximately 15 minutes in Internet radio, Podcasts, Spotify, DAB or Bluetooth mode (with external unit disconnected), it will automatically switch to Standby.

To switch the unit off completely, remove the mains plug from the main socket.

Please turn the unit off completely to save energy when not in use

Adjusting the Volume

- Press **VOLUME +/-** buttons to adjust the volume.
- To temporarily mute the sound press the **MUTE** button on the remote control. Press the **MUTE** button again, or press the **VOLUME +/-** buttons on the remote control to resume normal listening.

Navigating the Menu

1. Press the **MENU** button to access the menu.
2. Press the **12 w / s / 7 / 8** buttons to select your choice.
3. Press the **SELECT** button to confirm your selection.

Instructions Guide

Initial Set-up

When you first connect the unit to the mains socket, the display will show the start-up screen, followed by 'Language menu'. To select the language of your choice, press **12 w / s** buttons to find your preferred language. Press the **SELECT** button to confirm your selection. Once the language has been selected, the privacy policy page will come up next. Please visit the website mentioned in the page to view the details of the privacy policy. Press **SELECT** button on remote control to confirm and move onto the next step.

1. To launch the initial 'Setup wizard', press **7 / 8** buttons to select [YES]. Press **SELECT** button to confirm.
2. Right after you can select the time format. Choose the clock time format as per your preferences, either to [12] or [24] hours. Press **SELECT** button to confirm and move onto the next step. Next, select which source (**DAB/FM/ NETWORK/NO UPDATE**) the unit uses as a source to obtain and update the time and date. If "Update from Network" is selected proceed to the next step and select the time zone, to ensure that this is correctly displayed. Right after, you can also choose the "Daylight savings" which can be set to [ON] or [OFF].
3. Onto next screen, you can specify whether the product should remain connected to the Network when on Standby mode. Press **7 / 8** buttons to select [YES], then press **SELECT** button to confirm.
4. Robinson 2IR, will now scan for your wireless network, this may take a few seconds then a list of all the wireless networks available will appear on the screen. Select the WLAN network you know and whether to use WPS (Push Button/Pin) or Skip WPS to enter the password using the displayed keyboard

Connecting using the WPS button on your router

Connecting using the WPS (Wi-Fi Protected Setup) button on your router is a quick and easy way to connect your radio without having to type in a password.

Select one of the following connection methods:

Push WPS Button

- Press buttons 12 w/s to select the option Push Button. Press **SELECT** button to conrm.
- A message will be displayed on the screen, telling you to press the WPS button on your router which you need to then press.

Note: Refer to your router user manual to identify the WPS button, if in doubt.

- Press the **SELECT** button to conrm. Robinson 2IR will now connect to your router.
This may take a few seconds.

Pin (code number)

- Press 12 w/s button to select PIN. Press **SELECT** button to conrm. The radio will generate an 8-digit code number, which will be displayed on radio's screen.
- Refer to your router user manual to follow the WPS instructions, when using a pin code number. Enter this code number into the wireless router to connect with Robinson 2IR.
- Press **SELECT** button to continue.

Connecting using your wireless network password

When using a router with no WPS button, you will be asked to enter your password to connect your Robinson 2IR with your wireless network. Alternatively, select SKIP WPS to go straight to password screen.

1. Press 12 w / s / 7 / 8 buttons to select each letter/number of your password. Press **SELECT** button to enter the selected letter/number.
2. Once the password has been entered, press 12 w / s / 7 / 8 buttons, to conrm by selecting OK on the right hand-side of the screen. It takes a few seconds to connect with your network.
3. After your radio has connected, press **SELECT** button to exit the setup.

Settings can be changed at any time in Menu-**System Settings – Network – Network wizard**

This instruction manual explains the basic instruction for operating this unit. Unless otherwise stated, all operations described are based on remote control use.

System Settings

- Press **MENU** button to display the menu. Press 12 w / s buttons to select System settings and then press **SELECT** button to conrm.

Equaliser

This system supports a variety of equalizers and sound eects.

- Press the EQ button to access Equaliser menu Alternatively,
- While in the System settings mode, press the 12 w / s buttons to select Equaliser and then press the **SELECT** button to conrm.

1. The display will show : **NORMAL > CLASSIC > ROCK > POP > JAZZ > MY EQ > MY EQ PROFILE SETUP**
2. Press the 12 w / s buttons to select and then press the **SELECT** button to conrm.
3. For **[MY EQ]**, please go to [My EQ Prole Setup] for custom setting before selecting this option.
4. While in **[My EQ Prole Setup]**, press 12 w / s to select [Bass/Treble] and then press **SELECT** button to conrm.
Press 12 w / s to select desired level and then press **SELECT** button to conrm.
Press BACK button to exit and then press 7 / 8 buttons to select **[YES]** and press **SELECT** button to conrm.
The Display will show **Equalizer Saved**.

Network

1. While in System Settings mode, press the 12 w / s buttons to select Network and press the SELECT button to conrm.
2. Press the 12 w / s buttons to select from the following settings, and then press the SELECT button to conrm.
 1. .
3. Press the **BACK** button to cancel the setting and return back to the previous menu.

Time/Date

The Time/Date can be automatically set once it has been connected to the Internet, DAB or FM radio station with time/date information. You may also adjust the Time/Date manually. Press CLOCK button to access Set Time/Date menu to adjust Time/Date, Alternatively,

- While in System Settings mode, press the 12 w / s buttons to select Time/Date and press the SELECT button to conrm. Press the 12 w / s buttons to select Set Time/Date and press the SELECT button to conrm.
2. The date digits will ash onto the radio screen.
 3. Press the 12 w / s buttons to adjust the date, then press the SELECT button to conrm.
 4. Repeat above Step (2) to set the Month/Year/Hour/Minute.
 5. The date and time settings are now completed.

For the other settings under Time/Date, press the 12 w / s 7 / 8 buttons to select from the following options and then press the SELECT button to conrm.

| | |
|-------------------------|--|
| Auto update | Update from DAB/FM/Network/No update |
| Set format | 12 / 24 hours format. |
| Set timezone | Select a time zone. (Only available when Auto update from Network is on.) |
| Daylight savings | Select daylight savings. (Only available when Auto update from Network is on.) |

The default auto time update setting is "Update from Network". If you would like to manually set the time, it is recommended to turn the Auto update function o.

Inactive Standby

Use the Inactive Standby to turn o the unit after a certain time in play mode.

1. While in System settings mode, press the 12 w / s buttons to select Inactive Standby and press SELECT button to conrm.

2. Press 12 w / s buttons to select between 0, 2 hours, 4 hours, 5 hours and 6 hours. Press **SELECT** button to confirm.

Language

1. While in System settings mode, press the 12 w / s buttons to select **Language** and then press the **SELECT** button to confirm.
2. Press the 12 w / s buttons to change the display language of your choice.
3. Press the **SELECT** button to confirm.

Factory Reset

Factory reset would be recommended when experiencing issues with radio reception, moving houses, moving to a different part of the country, when the Robinson 2IR may pick up the local and national DAB stations in that area, therefore previously tuned channels may no longer be available.

1. While in System settings mode, press the 12 w / s buttons to select Factory reset, and press the **SELECT** button to confirm.
2. Press 7 / 8 buttons to select [Yes], and press the **SELECT** button to confirm or select [No] to cancel.

After the system reset, all the tuned stations, Internet, DAB & FM preset stations will be erased.

Software update

1. While in System settings mode, press the 12 w / s buttons to select Software update and then press the **SELECT** button to confirm.
2. Press the 12 w / s buttons to select "Auto-check setting" or "Check now", and then press the **SELECT** button to confirm.

Before downloading software, ensure that the radio is plugged into a stable mains power connection. Interrupting the mains supply during software download can lead to functional disturbances and/or damage to the unit!

Setup wizard

The setup wizard is available in the System settings section; you can run through this to configure settings for date/time and network. Once this has finished, your radio is ready to use.

Info

1. While in System settings mode, press the 12 w / s buttons to select **Info** and then press the **SELECT** button to confirm.
2. The software version, Spotify version, Radio ID and Friendly name will show on the

Privacy policy

1. To view the Privacy policy page, press **MENU** to go to **System settings** – Privacy
2. After 'Factory reset', you need to read and agree with the Privacy policy

Back light

1. While in System settings mode, press the 12 w / s buttons to select **Back light** and then press the **SELECT** button to confirm.
2. For the other settings under **Back light**, press the 12 w / s buttons to select the following options and then press the **SELECT** button to

| | |
|-----------------------|--|
| Operation Mode | High / Medium / Low |
| Standby Mode | Timeout: Off/ 10 sec/ 30 sec/ 60 sec Standby Level: High/ Medium/ Low/ Off |

Internet Radio

To listen to Internet radio station your radio must be connected to the Internet. Try positioning your radio as close as possible to your router to get the best connection speeds. When Internet Radio mode is selected, the radio connects with the Frontier Silicon Internet radio portal to download a list of stations. Once a station is selected, the radio will connect directly to that station.

Press **MODE** button on remote control to access Mode Menu.

Press 7 / 8 button to select and press **SELECT** button to switch to "Internet radio" mode.

While in Internet Radio mode, press the **MENU** button on remote control to access the menu. You can choose between: Last listened, Station list, System settings and Main menu. Press 12 w / s buttons to select and press the **SELECT** button to confrm.

When internet radio is restarted, the last listened stations is automatically selected. To return to [Station List], press **BACK** button.

Last listened

1. Press 12 w / s buttons to select [Last listened], then press **SELECT** button to confrm.
2. Press 12 w / s buttons to select the history of stations that you have listened to before and press **SELECT** button to confrm.

Station List

While in Internet Radio mode, press **MENU** button to access the menu. Press the 12 w / s buttons to select [Station List] and press the **SELECT** button to confrm.

When Internet radio is restarted, the last listened stations is automatically selected. To return to [Station List], press **BACK** button.

If it is the rst time listen Internet radio, the radio will be in [Station List].

1. Press the 12 w / s buttons to select from the following options, and then press the **SELECT** button to confrm.

| | |
|--------------------|---|
| “Countries” | You can search specifically for stations from your country. Within this scope, it will display local radio stations available at your location. |
| Search | You can search stations using various keywords. The name and a description of your selected station will show on the display. |
| Location | You can select radio stations from a list of countries available |
| Popular | Select station from a list of the most popular internet stations from around the world. |
| Discover | Select stations from various categories in the menu: Country, Genre or Language. |

Press the **BACK** button to move back a menu level.

Preset Stations

The preset Internet radio stations are stored in the radio and cannot be accessed from other radios.

1. To store a preset, you must first be listening to the station that you would like to save. Press and hold the PRESET button until the display shows the “Save to Preset”.
2. Select one of the 30 presets to store the current station by pressing 12 w / s buttons to select the number and press the **SELECT** button to confirm. The display will show “**Preset stored**” and then save the station. Alternatively, press and hold number keys (0-9) on remote control can store to preset 1-10 directly,

Recalling a Stored Station

1. To select a preset, press the PRESET button, and then press the 12 w / s buttons to select one of the listed preset stations.
2. Press the SELECT button to confirm the selection.
3. If there is no station to be saved, it will show Preset empty.

Or press PRESET . / , button repeatedly can switch between stored preset stations

Alternatively, press number keys (0-9) can play preset station (1-10) directly, Operation of Preset and Recall stations are same for Internet **Radio, Podcasts, DAB and FM**.

Internet Radio Display Modes

Every time you press the INFO button, the display will show the following display modes:

Channel Info/Description- Language/Location – Bit rate/Sound format/ Sampling rate – Playback buffer – Date

Podcasts

To listen to Podcasts your radio must be connected to the internet. Try positioning your radio as close as possible to your router to get the best connection speeds.

Press MODE button on remote control to access Mode Menu. Press 7 / 8 button to select and press SELECT button to switch to “Podcasts” mode.

While in Podcasts mode, press the MENU button on remote control to access the menu. You can choose between:

Last listened, Podcast list, System settings and Main menu.

Press 12 w / s buttons to select and press the SELECT button to confirm.

Last listened

1. Press 12 w / s buttons to select [Last listened], then press SELECT button to conrm.
2. Press 12 w / s buttons to select the history of stations that you played beforehand and press SELECT button to conrm.

Podcast List

While in Podcasts mode, press MENU button to access the menu. Press the 12 w / s buttons to select [Podcast list] and press the SELECT button to conrm. When radio is restarted, the last listened stations is automatically selected. To return to [Podcast list], press BACK button.

If it is the rst time listen Podcast, the radio will be in [Podcast list].

1. Press the 12 w / s buttons to select from the following options, and then press the SELECT button to conrm.

| | |
|--------------------|--|
| “Countries” | You can search specifically for stations from your country. Within this scope,it will display local radio stations in your location. |
| Search | You can search stations using various keywords. The name and a description of your sel ected station will show on the display. |
| Location | You can select for stations from a list of countries available |
| Discover | Select stations from various categories in the menu: Country, Genre or Language. |

Saving and Recalling Preset Station

- Refer to “Preset Stations” and “Recalling a Stored Station” under Internet Radio for instruction.

DAB Operation

Press MODE button on remote control to access Mode Menu. Press 7 / 8 button to select and press SELECT button to switch to “DAB radio” mode.

Alternatively, press DAB button on remote to switch to DAB mode.

The unit will enter DAB mode and perform the auto scan function. During the scan the display will show “Scanning... ” together with a slide bar that indicates the progress of the scan and the amount of stations that have been found so far.

Once the scan has nished, the unit will select the rst alphanumerically found station.

To explore the found stations, press the 12 w / s buttons to select and press the SELECT button to conrm.

Station List

1. While in DAB mode, press the MENU button to access DAB menu.
2. Press the 12 w / s buttons to select Station list and then press the SELECT button to conrm.
3. A list of DAB stations will show on the display.

Auto Scan

Press SCAN button on remote control to activate auto scan. Alternatively,

- Press the MENU button, and then press the 12 w / s buttons to select Scan.
Press the SELECT button to conrm to activate auto scan.

2. The display will show "Scanning..." and a progress slide bar.
3. All the stations that have been found will be stored automatically. To explore and listen to the found stations, press the 12 w / s buttons to select and then press the SELECT button to conrm.

Manual Tuning

As well as the auto tune function, you can manually tune the receiver. This can help you when aligning your aerial or when adding stations that were missed while auto tuning.

1. Press MENU to display the menu.
2. Press the 12 w / s buttons to select Manual tune, and press the SELECT button to conrm.
3. The display will show the multiplex 5A to 13F.
4. Press the 12 w / s buttons to select the channel, and press the SELECT button to conrm.
5. To listen to any stations found, return to the now playing screen and press 12 w / s buttons to select the required station from the station list and press SELECT button to conrm.

DAB Display Modes

Every time you press the INFO button, the display will show the following display modes:

DLS – Programme Type – Ensemble/Frequency – Signal error/Strength – Bit rate/Codec/Channels – Date

DLS (Dynamic Label Segment)

This is a scrolling message giving real-time information, e.g. song titles, news headlines, etc.

Programme Type

This describes the "style" or "genre" of the programme that is being broadcast.

Ensemble Name/Frequency

This display the name of the multiplex that contains the station you are listening to and the frequency. A multiplex is a collection of radio stations that are bundled and transmitted on one frequency. There are national and local multiplexes. Local ones contain stations that are specic to that area.

Signal Error/ Signal Strength

The error is shown as a number. If the number is 0, it means the signal received is error free and the signal strength is strong. If the error rate is high, it is recommended to reposition the radio aerial or reposition the unit. The display will show a slide bar to indicate the signal strength, the stronger the signal, the longer the bar will be from left to right.

Bit Rate / Codec / Channels

The display will show the digital audio bit rate being received with additional information about the audio codec and channel conguration.

Date

This displays the current date provided automatically by the broadcaster.

Prune Invalid

You may remove all unavailable stations from the list.

1. During DAB mode, press the MENU button and press the 12 w / s buttons to select Prune invalid, press SELECT button to conrm.
2. Press the 7 / 8 buttons to select YES and press the SELECT button to conrm. Or select NO to cancel.

DRC (Dynamic Range Compression)

If you are listening to music with high dynamic range in a noisy environment, you may wish to compress the audio dynamic range.

1. During DAB mode, press the MENU button and press the 12 w / s buttons to select DRC, press the SELECT button to conrm.
2. Press the 12 w / s buttons to select **DRC high/low/off** and press the **SELECT** button to conrm the setting.

Station Order

You may wish to arrange the station listing order.

1. During DAB mode, press the MENU button and then press the 12 w / s buttons to select Station order, press SELECT button to conrm.
2. Press the 12 w / s buttons to select Alphanumeric/Ensemble and press the SELECT button to conrm the setting.

Saving and Recalling Preset Station

- Refer to “Preset Stations” and “Recalling a Stored Station” under Internet Radio for instruction.

FM Operation

To switch the unit to FM mode, press MODE button on remote control to access Mode Menu. Press 7 / 8 button to select and press **SELECT** button to switch to “FM radio” mode.

Alternatively, press FM button on remote to switch to **FM** mode.

The display will show the frequency.

Auto Scan

Press SCAN button on remote control to activate auto scan. Alternatively,

- Press and hold the 7 / 8 buttons to start searching for a staion backwards or forwards. Once a station has been found, the scanning will stop automatically.

The search may not stop at a station with a very weak signal

Manual Tuning

To search for FM stations manually, press the 7 / 8 buttons repeatedly until your desired frequency is reached.

With FM radio, it may be necessary to ne tune each station by pressing / buttons repeatedly. Each press will adjust the frequency by 0.05 MHz. If reception is still poor, adjust the position of the aerial or try moving the radio to another location.

FM Display Modes

Every time you press the INFO button, the display will show the following display modes: **Radio Text – Programme Type – Frequency – Date**

RDS Radio Text

This is a scrolling message information about the current programme.

Programme Type

This describes the “Style” or “Genre” of music that is being broadcast.

Station Name / Frequency

When an RDS station is received, the name of that station will be displayed, or if not the frequency will be displayed.

Scan Setting

1. Press the MENU button to access FM menu.
2. Press the 12 w / s buttons to select Scan setting and then press the **SELECT** button to conrm.
3. Press the 7 / 8 buttons to select Yes to receive strong signal only and then press the SELECT button to conrm.

Audio Setting

1. Press the MONO/ST. button on the remote control to toggle between the Mono only or Mono/Stereo selection.
Alternatively,
2. Press the MENU button to access the main menu.
3. Press the 12 w / s buttons to select Audio setting and press the SELECT button to conrm.
4. Press the 7 / 8 buttons to select YES to listen in mono only or NO to let the unit select Stereo or Mono automatically.
5. Press the SELECT button to conrm.

Saving and Recalling Preset Station

- Refer to “Preset Stations” and “Recalling a Stored Station” under Internet Radio for instruction.

Bluetooth Operation

The unit has a Bluetooth function that can receive a signal within 8 metres. Pair the unit with a Bluetooth device such as a phone or a tablet to play audio from:

- Press MODE button on remote control to access Mode Menu. Press 7 / 8 button to select and press **SELECT** button to switch to “**Bluetooth Audio**” mode.
Alternatively, press BT button on remote to switch to Bluetooth mode
The Bluetooth logo will start to ash to show the unit in pairing mode.
- Activate your Bluetooth device and select the search mode.
- “Majority Robinson 2IR” will appear on your Bluetooth device list.
- Select “Majority Robinson 2IR” and enter “0000” for the password if necessary. Once connected the Bluetooth logo on the screen will stop ashing. Your device is now paired with the unit.
- Press BT button on remote control can disconnect existing Bluetooth connection, with other Bluetooth devices able to locate and make connection with the unit.
- To disconnect the Bluetooth function, press the MODE button on remote control to switch to another mode or disable the function from your Bluetooth device.

Playing Music via Bluetooth

You may need to adjust the volume on your radio and Bluetooth device.

- Press 12 w button to play/pause music, or press 7 / 8 buttons to skip to the previous/next track.
- The operational range between the unit and the device is approximately 8 metres.
- For better signal reception, remove any obstacles between the unit and the Bluetooth device.
- Compatibility with all devices and media types is not guaranteed.
- Some mobile phones with the Bluetooth function may connect and disconnect as you make and end calls. This is not an indication of a problem with your unit.

Net Remote

The device gives a feature of NetRemote by smartphone or tablet in iOS or Android system. By downloading the assigned app named UNDOK, you can view all the modes of Internet radio, Podcasts, Spotify, DAB, FM and Bluetooth. Search UNDOK from Google Play or Apple Store for UNDOK app, and install it to your smartphone or tablet.

Before using the UNDOK app, make sure the device and the smartphone or tablet are in the same WiFi network. Launch the app.

The app initializes and scans for the device in the network. Tap the device to make the NetRemote connection.

- Once the smartphone or tablet has already accessed the device, they will automatically connect the next time when you open the app again.
- Be aware that if another smartphone or tablet with the app in the same network has access with the device; the original connection will be cut o.

When it is the rst time that you connect the device to the unit, the app may ask you to enter the PIN. Default PIN is 1234. For details of changing the PIN for security, please refer to System Settings section: **Network – NetRemote PIN Setup**.

Select your desired mode in the main page. You may then control the selected mode on your smartphone or tablet and on the device simultaneously.

Spotify Connect

Use your phone, tablet or computer as a remote control for Spotify.

Go to spotify.com/connect to learn how.

Licenses

The Spotify Software is subject to third party licenses found here: <https://www.spotify.com/connect/third-party-licenses>

Sleep Setting

This function allows you to program the unit to switch into Standby mode by itself after a set period of time.

1. To activate the sleep function, press **SLEEP** button repeatedly. The time will change in the below sequence on every press:

Sleep OFF 15minutes 30minutes 45minutes 60minutes 90minutes 120minutes

2. When your desired sleep time appears in the display, stop pressing the button and the sleep function will be activated in two seconds. “ ” will show on the display. Next to the sleep icon you will also see the displayed the remaining time until the radio will switch o.
3. When the sleep timer counts down to zero, the unit will switch into Standby mode. To switch the sleep function o while the sleep timer is still counting down, press the SLEEP button repeatedly to select “**SLEEP OFF**”.

Alternatively,

1. Press the MENU button to display the function main menu. Press the 12 w / s buttons to select Main menu, and then press the SELECT button to conrm.
2. Press the 12 w / s buttons to select Sleep, and then press the **SELECT** button to conrm.
3. Press the 12 w / s buttons to select sleep timer, and then press the **SELECT** button to conrm.

Setting the Alarm

1. Press the ALARM button on the remote control, the display shows “Alarm (1 or 2): O [hh:mm]”.
2. Press the 12 w / s buttons to select the Alarm number (1 or 2) and then press the SELECT button to start the setting of the following parameters.

Press the 12 w / s buttons to select then press the SELECT button to conrm

3. kj

| | |
|---------------|--------------------------------------|
| Enable | Off/ Daily/ Once/ Weekends/ Weekdays |
| Time | (Alarm On time) |
| Mode | Buzz/ Internet radio/ DAB/ FM |
| Preset | Last Listened/ (Preset station) |
| Volume | 0-32 |
| Save | Save and confirm the alarm setting |

4. Finally, select “**Save**” and press the **SELECT** button to save the alarm setting.

The display will show **Alarm Saved**. When the alarm is set, the alarm icon will appear on the display

To cancel Alarm, refer to steps 1-3 to set alarm O. The alarm icon will disappear from display.

Alternatively, during Standby mode, press the **ALARM** button repeatedly can turn the saved Alarm 1/2 on/o sequentially.

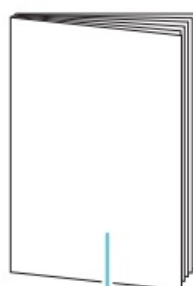
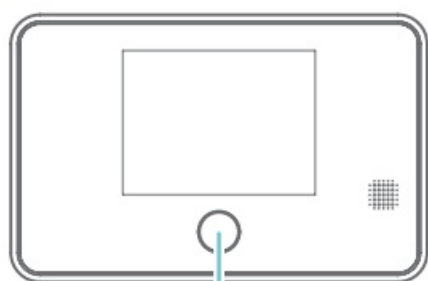
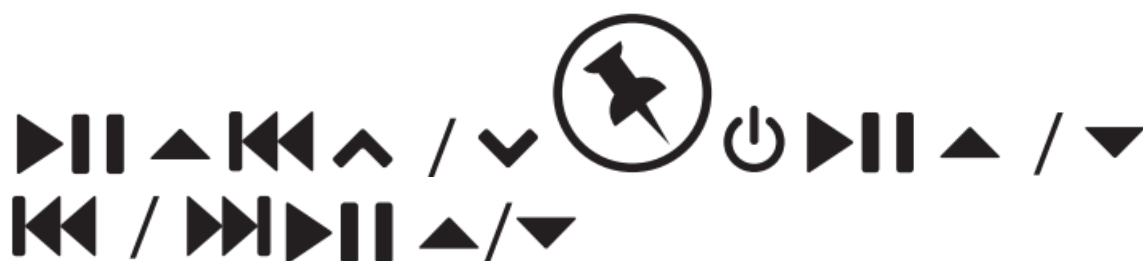
Maintenance

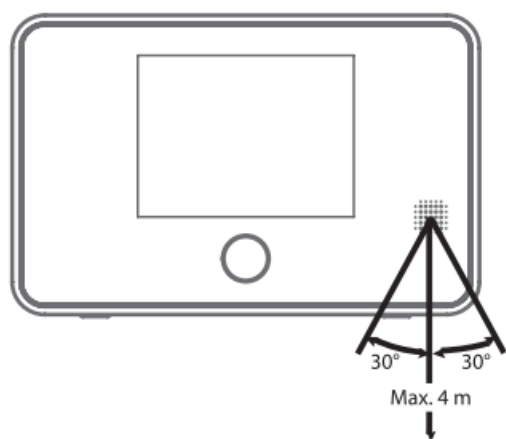
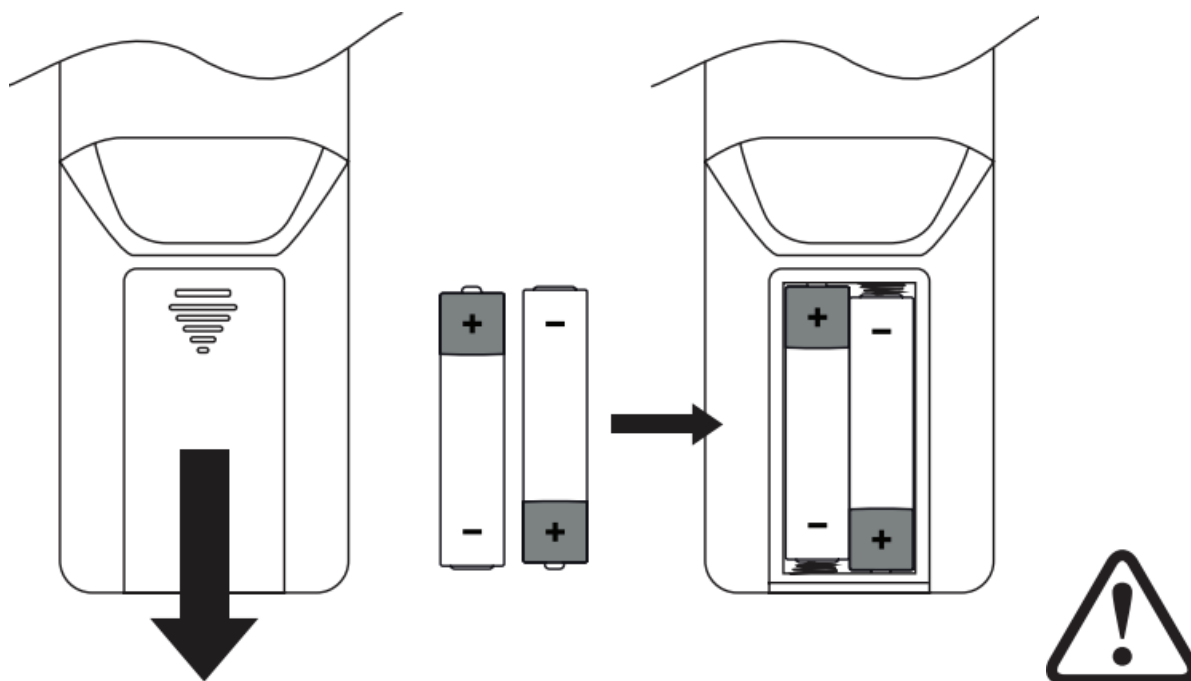
Cleaning the Unit

Ensure the unit is fully unplugged from the mains socket before cleaning.

- To clean the unit, wipe the case with a slightly moist, lint-free cloth.

- Do not use any cleaning uids containing alcohol, ammonia or abrasives.
- Do not spray aerosol at or near the unit.





My EQ profile setup

Bass: 0

Treble: 0

Bass

Bass 0 dB



**Internet
radio**

Save to Pr eset

01. RR-S RG+

02. [Not set]

03. [Not set]

04. [Not set]

05. [Not set]



**DAB
radio**



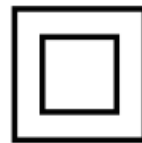
**FM
radio**



**Bluetooth
Audio**



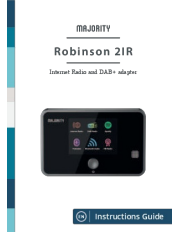
Spotify®



MAJORITY

E. Latham

Documents / Resources

| | |
|---|---|
|  | <p>MAJORITY 2IR Internet Radio and Adapter [pdf] Installation Guide 2IR Internet Radio and Adapter, 2IR, Internet Radio and Adapter, Radio and Adapter, Adapter</p> |
|---|---|

References

- [🎧 Spotify - Connect](#)
- [🎧 Third Party Licenses | Spotify for Developers](#)
- [📺 Soundbars, DAB Radio & Internet Radio range | Now in over 3 Million Homes](#)
- [📺 Registrieren Sie Ihr Produkt - Majority](#)
- [📺 Rückgabe & Garantie - Mehrheit](#)
- [📺 Support - Majority](#)
- [📺 Registra tu producto - Majority](#)
- [📺 Devoluciones y Garantía - Mayoría](#)
- [📺 Support - Majority](#)
- [📺 Enregistrez votre produit - Majority](#)
- [📺 Retours et garantie - Majorité](#)
- [📺 Support - Majority](#)
- [📺 Registra il tuo prodotto - Majority](#)
- [📺 Resi e garanzia - Maggioranza](#)
- [📺 Support - Majority](#)
- [📺 Support - Majority](#)
- [🎧 Third Party Licenses | Spotify for Developers](#)
- [User Manual](#)

[Manuals+](#), [Privacy Policy](#)

This website is an independent publication and is neither affiliated with nor endorsed by any of the trademark owners. The "Bluetooth®" word mark and logos are registered trademarks owned by Bluetooth SIG, Inc. The "Wi-Fi®" word mark and logos are registered trademarks owned by the Wi-Fi Alliance. Any use of these marks on this website does not imply any affiliation with or endorsement.