

MAJORITY

**2024 Internet Radio
Music System**



MAJORITY 2024 Internet Radio Music System User Manual

[Home](#) » [MAJORITY](#) » MAJORITY 2024 Internet Radio Music System User Manual 

Contents

- 1 MAJORITY 2024 Internet Radio Music System
- 2 Product Usage Instructions
- 3 FAQ
- 4 Box Contents
- 5 Controls & Functions
- 6 Getting Started – Product Set-Up
- 7 Connecting to Network
- 8 Presets
- 9 Using Undok App – Net remote
- 10 Internet Radio & Podcasts
- 11 Spotify Connect
- 12 USB Playback
- 13 USB Playback
- 14 DAB Radio
- 15 DAB Radio
- 16 FM Radio
- 17 Bluetooth & AUX In Mode
- 18 Documents / Resources
 - 18.1 References

MAJORITY

MAJORITY 2024 Internet Radio Music System



Specifications:

- Product Name: Bard Internet Radio Music System
- Power Source: Power adaptor
- Audio Input: 3.5mm AUX jack
- Output: Headphone jack – 3.5mm
- Additional Features: DAB+/FM antenna, USB port for music playback

Product Usage Instructions

Controls and Functions:

The Bard Internet Radio Music System comes with various controls and functions:

- Volume knob / OK / SCAN button: Adjust volume, confirm entry, or scan on FM mode
- ON / Standby / MODE button: Rotate for volume adjustment, press to OK, switch modes
- UP / TUNING UP button: Move up or right in FM mode

Remote Control Usage:

To operate the remote control, follow these steps:

1. Open the battery compartment and insert two AAA batteries.
2. Power on/off the device, set alarms, change modes, select tracks, adjust volume, and more using the remote control buttons.

Getting Started – Product Set-Up:

Follow these steps to set up your Bard Internet Radio Music System:

1. Remove all packaging and prepare the radio for use.
2. Insert the power adaptor into the device's port and plug the other end into a power socket.

FAQ

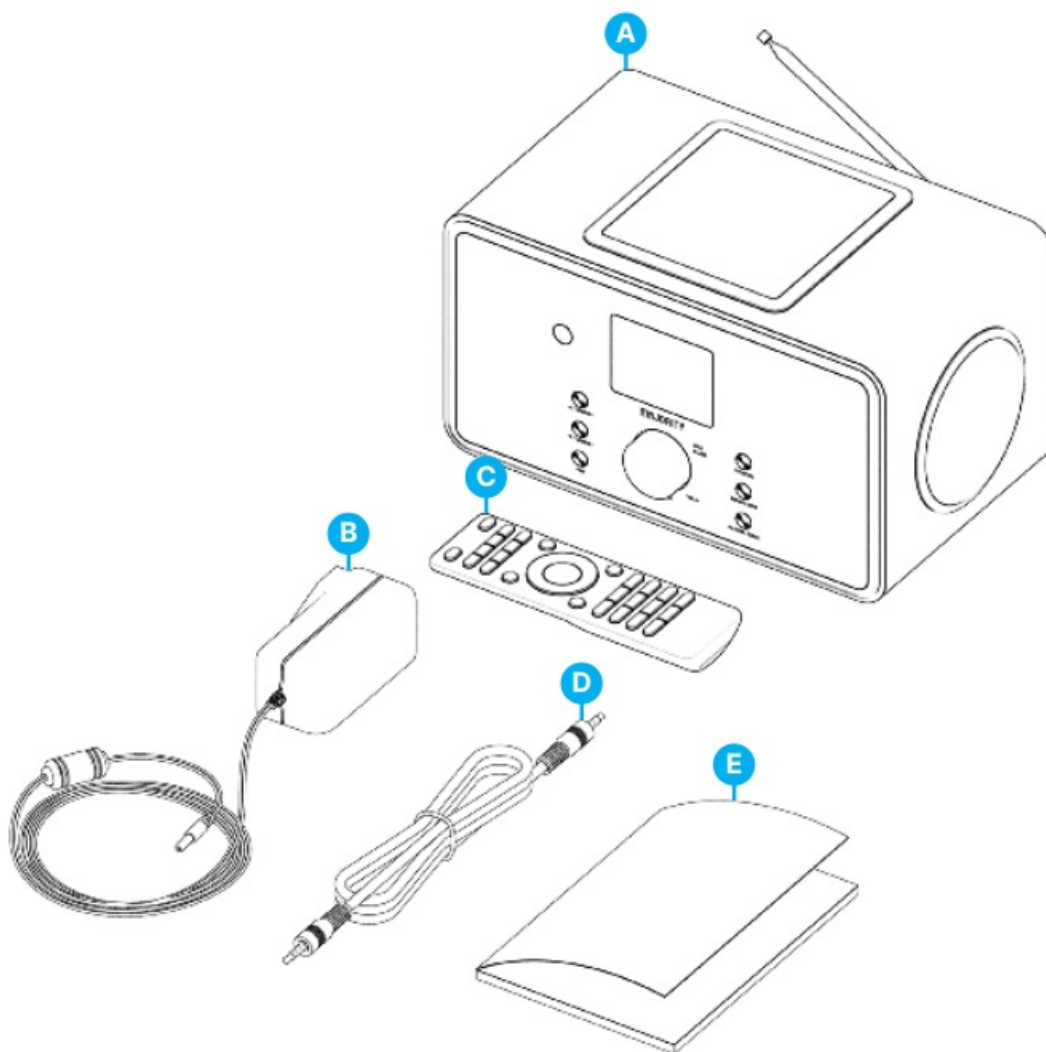
Q: How do I set an alarm on the Bard Music System?

A: Press the ALARM / BACK button on the device or use the remote to set Alarm1 or Alarm2.

Box Contents

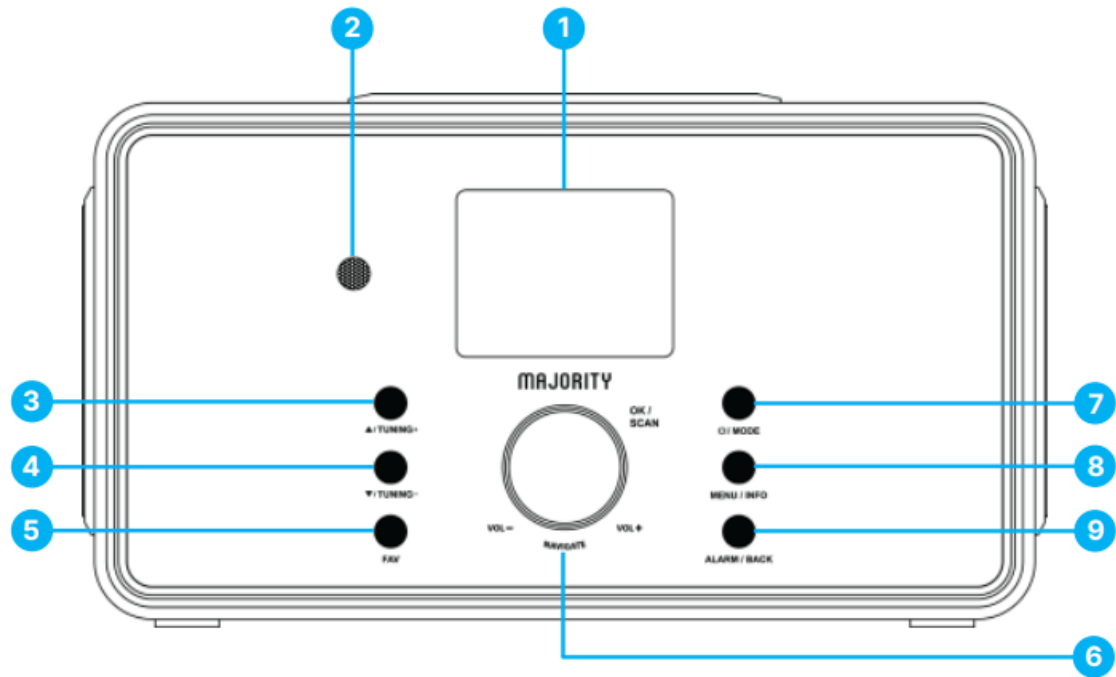
What's in the Box?

- A. Bard Music System
- B. Power adaptor
- C. Remote control
- D. 3.5mm audio cable
- E. User manual



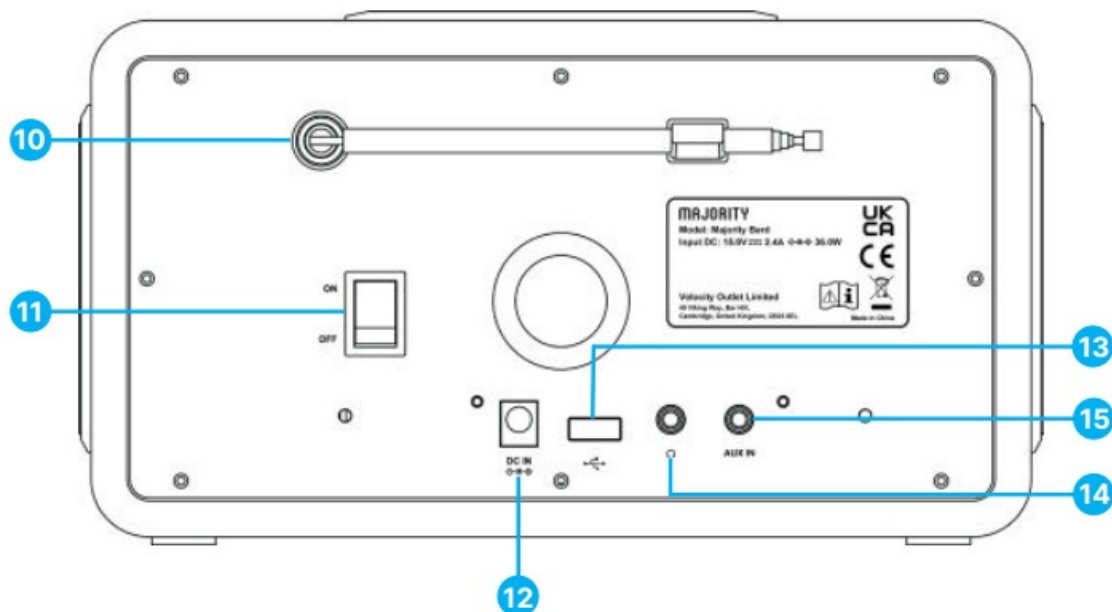
Controls & Functions

Bard Radio – Front View



1. 2.4" screen – Colour TFT display
2. Remote Control sensor – Receive remote control signal
3. UP / TUNING UP button
4. DOWN / TUNING DOWN button –
Move up or right; FM: Set frequency
Move down or left / FM: Set frequency
5. FAV button – Select favorite stations; Press and hold to BT discoverable under BT mode
6. Volume knob / OK / SCAN button
7. ON / Standby / MODE button – Rotate to adjust volume; Press to OK; Press to scan on FM mode. Switch on/Standby or change mode.
8. MENU / INFO button – Enter the menu; View the information of the station or track
9. ALARM / BACK button – Set alarm clock; Return one step under the menu








Bard Radio – Back View


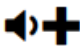
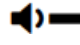



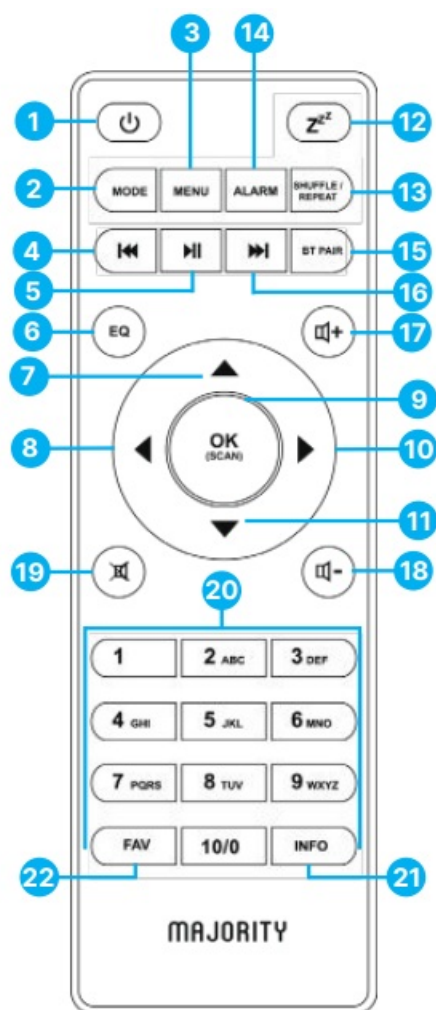
- 10. DAB+/FM antenna – Antenna for enhancing DAB/FM reception
- 11. ON/OFF switch – Switch on/off the device
- 12. DC IN – Plug for power support
- 13. USB port – USB drive music playback
- 14. Headphone jack – 3.5mm headphone output
- 15. AUX jack – 3.5mm audio input

Remote Control

Operating your remote control Press and slide the back cover to open the battery compartment of the remote control. Insert two AAA-size batteries. Make sure the (+) and (-) ends of the batteries match the (+) and (-) ends indicated in the battery compartment. Close the battery compartment cover.

- 1. Device power on/off; alarm off 
- 2. MODE – Open, close, change the radio Mode in between FM, DAB,BT,USB, AUX, Spotify, Internet Radio & Podcasts
- 3. MENU – Press to open, close menu
- 4. Select previous track, hold down to seek 
- 5. Start playback, pause 
- 6. EQ – Select equalizer preset
- 7. Move up; FM: Set frequency 
- 8. Move left, step back 
- 9. OK SCAN – Confirm entry, FM: Scan; Playing: album in full screen
- 10. Move right, step next 
- 11. Move down; FM: Set frequency 
- 12. Zzz – Sleep setting

13. SHUFFLE REPEAT – Music: random and repeat selection
14. ALARM – Set Alarm1, Alarm2
15. BT PAIR – Press and hold to BT discoverable under BT mode
16. Select next track, hold down to seek 
17. Increase volume 
18. Decrease volume 
19. Mute, Unmute 
20. 1-10/0 – Number buttons: retrieve saved favorite station, hold down to save station
21. INFO – Display FM mode info (Name, PTY, RT, frequency) Display DAB mode info (Station, track, artist etc.)
22. FAV – Select your favourite stations, and hold down to save favorite



Getting Started – Product Set-Up

*Please note that the instructions within this manual will refer to the remote button number e.g. (Rem*number*) or radio buttons e.g. (Ref* number*) in accordance with the diagrams on pages 4-6.

Connection and Preparation

Remove all packaging and prepare your Majority Bard radio for use. Insert the power adaptor to the back of the device into its port (Ref.12) and plug the other end into the power socket.

Connecting the network

- A broadband connection in combination with a wireless access point, router, or similar network device.
- The network device needs to support Wi-Fi (802.11 a/b/g/n) wireless connection.
- Make sure your wireless network is set and you have the WEP, WPA or WPA2 security password to activate the connection with Majority Bard radio. You may also use the WPS (Wi-Fi Protected Setup) function for easy pairing between the network device and the radio. Check if the light indicators on the network device are inappropriate status.

Antenna

Plug the antenna into the F-connector port (Ref.10) at the back of the radio. To get good reception for DAB/FM broadcasting, always extend the antenna to its full length.

First Time Setup

When powering the device on for the first time, you will be appointed to change the language. Rotate the knob to select the menu language you want from the list and press the OK button (Rem.9), to confirm your selection. Right after the privacy policy will be displayed. Press OK button to continue (Rem.9). A setup wizard guide will be automatically launched to guide you through the process. Select 'YES' and confirm and launch the setup wizard. If you select 'NO', the next window will ask you to choose if you want to start the setup wizard again the next time you power the device on.

Setting date and time

- Select the clock format such as: '12' for the 12-hour display format or '24' for the 24-hour display format. If you select the 12-hour format, the display shows 'AM' in the morning or 'PM' in the afternoon after the time.
Note: 'AM'/'PM' displays only if you have chosen the 12-hour time format. Select 'AM' for the morning hours or 'PM' for the afternoon hours.
- Once selected, the following options will be displayed on the radio screen to choose from for the time and date to be updated such as Update from DAB, Update from FM,
- Update from Network or No update.
Note: If you choose 'Update from Network' you must indicate your time zone in the next window.
- Next choose daylight saving to 'ON' for summertime, otherwise select 'OFF.' If you choose 'No update,' you will have to enter the date and time manually.

Connecting to Network

Connecting Majority Bard with your network

Firstly, the device asks to keep network connected. To control the device in all operating modes via the app, select 'YES' to confirm. If choosing 'NO,' while in Standby Mode it is not possible to control the device from the app you can only do so in AUX IN, FM, DAB operating modes.

Note: The power consumption in Standby Mode will be higher when the network connection is On. Once you confirmed your selection, a list of WIFI networks found available at your location will then be displayed on the radio screen. Select from the list your network to connect Majority Bard radio with it using one of the following methods:

- Push button: The radio prompts you to press the connect button on your internet router. Once activated, Bard

radio scans for a ready Push Button network available and connects.

- Pin button: The radio generates an 8-digit code number which you enter into your wireless router, access point, or an external registrar.
- Skip WPS: Enter key as for a standard encrypted network. To enter the network key, use the dial knob (Ref.6) or the direction buttons on the remote control to move the cursor through the characters and press OK to confirm. As each character is selected, the key is built up near the top of the display. There are three options accessible by tuning the navigate dial knob (Ref.6) back before the first characters – Backspace, OK and Cancel.

Note: For more information on setting up a WPS encrypted network, see your WPS router's instructions.

Once the key has been entered Bard radio will search and connect to your network. Bard radio will on its screen the status connected if the set-up has been successfully completed. If connecting with your network using this method fails, it returns to the previous screen to try again. Once completed, press OK to quit the setup wizard

Presets

Storing & Recalling Presets

- Presets are stored on the radio and cannot be accessed from other devices.
- The number of presets for each mode are DAB- 40; FM- 40, Spotify- 10 and 40 in total for the internet radios and podcasts all together.
- While playing a radio station/podcast to store as a preset, press and hold the FAV button for 2-3 seconds (Rem.22). The display shows the 'Store preset screen.' Using the arrow buttons find an empty preset space, select one and confirm. The radio display will show stored.
- To recall a preset, press FAV button on the remote (Rem.22). Using the arrow buttons, search for the one you wish to play from your list and confirm. The radio will then start playing.
- When a preset station is playing, it shows a star icon ★ (1, 2, etc.) at the bottom of the screen.
- For 1-9 preset stations, you can use shortcut buttons on the remote control keypad.
- Press and hold for 2-3 seconds a number button on the remote keypad, between 1-9, to store a radio station. Alternatively, press FAV button to select the corresponding number of presets.
- To save a preset from 10 onwards, you can only store or recall via the 'Presets list'.

Using Undok App – Net remote

UNDOK

The Majority of Bard radio has a feature of network remote for smartphones or tablet with IOS or Android operational system. Having this feature will allow you to control the radio using the network remote on your device. To be able to activate and use this Net-remote, you must download on your phone/tablet the UNDOK app from Google Play or Apple Store then install it on your device or scan any of these codes for quick download.



For Android system
(Google Play)



For iOS system
(Apple Store)

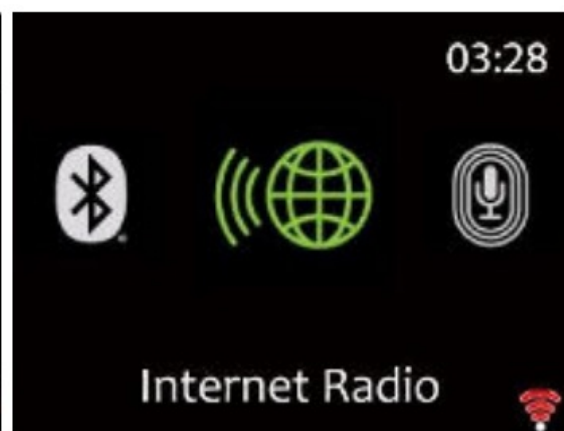
Before using the UNDOK app, make sure that Bard radio and your phone or tablet are connected to the same WIFI network. Launch the app. The app initializes and scans for Internet Radio in the network, find Majority Brad radio and select the radio to connect with. When prompted, enter the current PIN code. The default PIN is '1234'. You can view and edit the current PIN on the Internet Radio menu. Select your desired mode on the main page. Once connected you can control the selected mode on your smartphone / tablet and on the display of the device simultaneously. Tap the 'Standby' icon to go to standby mode. Tap 'Wake up' to go to operation mode. Tap 'Browse' to view the details. Tap to view the saved preset stations, and tap '+' to add the playing station to the desired preset station number.

NOTE: Be aware that if another smartphone/tablet with the app in the same network have access with the device, the original connection will be cut off.

Internet Radio & Podcasts

Internet Radio & Podcasts

Majority Bard can play thousands of internet radio stations and podcasts from around the world through a broadband Internet connection. When you select Internet radio or Podcasts mode, the device directly contacts the Frontier Smart Technologies portal to get radio stations or podcasts



The list menu is provided by the portal and is only accessible when the device is connected to the Internet Network. Please note: The contents and sub-menus may change from time to time. Choose the required category and search for the radio station or podcast you would like to play on your Bard radio.

Now playing information

While the stream is playing, the screen shows its name and description. To view further information, press 'INFO'. Each time you press 'INFO', another set of information will be displayed, cycle through name/description, genre/location, reliability, codec/sampling rate, playback buffer and today's date.

- Press OK to view the station album in full screen.
- Presets – 40 presets available,

Spotify Connect

Spotify Connect

Use your smartphone, tablet, or computer as a remote control for Spotify. Go to [spotify.com/connect](https://www.spotify.com/connect/third-partylicenses) to learn how. The Spotify Software is subject to third party licenses found here: <https://www.spotify.com/connect/third-partylicenses> Start playing Spotify on your smartphone as per usual. The 'devices icons' are displayed on your phone bottom page. Open the devices icon list to see the ones available on your network, then select 'Majority Bard.' Once successfully connected the radio icon will turn green and you can start playback via Bard radio. While playing you can Play / Pause (Rem.5) or use the Previous or Next track to skip (Rem.4. and Rem.17), which you can press and hold for a few seconds to fast forward or rewind.

USB Playback

USB Music Player

This feature is only to be used to play audio files from a USB stick. Insert the USB stick on its port on the back of the radio (Ref.13).

The USB stick specifications that you can use with Bard radio are:

- Supported USB file systems: FAT16, FAT32 -Maximum device capacity: 128 GB.
- Maximum number of items (files/sub directories) including any directory is: 5000.
- Maximum depth of file system tree: 8 directory levels. While in USB mode the menus are generated based on the content of the USB stick (folders, audio files). Browse through the files using the navigation knob (Ref.6) and BACK button (Ref.9), or the arrow buttons on the remote control.



The radio display shows folders and file names (not necessarily track names). Once you have found a track you want to play, press OK. A short press plays the track immediately.

In USB mode you can use the Previous (Rem.4) or Next track (Rem.16), to skip to the next or previous track. Press and hold for few seconds Previous or Next buttons to fast forward or fast rewind. Use PLAY/Pause button (Rem.5).

- My playlist – The files/ audio tracks can be added to My playlist by browsing your available tracks through the

USB playback menu. Highlight the track you wish to add, then press, and hold for 2 seconds the OK button to save. The playlist is preserved during standby mode. The device holds a queue of up to 200 tracks in My playlist.

- Clear My playlist – To clear the entire ‘My playlist.’
- Repeat/shuffle – You can set these options to repeat tracks or play them in random order. To activate Repeat/ Shuffle press the corresponding button on remote control (Rem.13).
- Now playing information – While a track is playing, the screen shows the file and artist. There is also a progress bar with figures for elapsed and total track time. At the bottom of the screen, an icon indicates USB depending on the source.

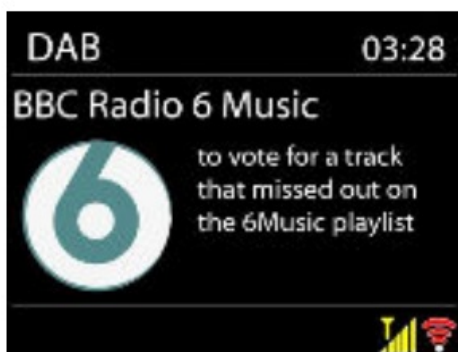
USB Playback

To view further information, press INFO. Each time you press INFO, another set of information will be displayed, cycling through the information: artist, album, codec/sampling rate, playback buffer and today’s date. Note: In USB mode the album cover is not supported

DAB Radio

DAB Radio

DAB mode receives DAB/DAB+ digital radio and displays information about the station, stream and track playing



Scanning for stations

The first time you select DAB radio mode, or if the station list is empty, the radio automatically performs a full scan for the available radio stations. To start a scan manually, choose ‘Full scan.’ To scan only stations with good signal strength, select ‘Local’ scan. Once the scan is complete, the radio shows a list of available stations. To remove stations that are listed but not available, choose Prune invalid. Rotate the navigation dial (Ref.6) to scroll through the list of DAB radio stations found, highlight the one you would like to play then press OK to confirm. Once selected, the radio station starts to play. While playing on the radio screen will be displayed, information about the radio station, audio track or broadcast info.

Now playing information

To view more info while streaming press INFO (Rem.21). Each time you press the INFO button, another set of information will display, cycling through DLS text, programme type, ensemble name/frequency, signal strength/error rate, bite rate/codec/channels and today’s date.

Press OK to view the station album in full screen.

DAB Radio

DAB mode settings

- Dynamic range compression (DRC)
- If you are listening to music with a high dynamic range in a noisy environment, you may wish to compress the audio dynamic range. This makes quiet sounds louder, and loud sounds quieter. You can change DRC as Off, Low or High.

Station order

- You can choose the order of the DAB station list to be either Alphanumeric, Ensemble or Valid.
- Ensemble lists groups of stations that are broadcast together on the same ensemble. Valid lists valid stations first, alphanumerically, then off-air stations.

FM Radio

FM Radio

FM radio mode receives analogue radio from the FM band and displays RDS (Radio Data System) information about the station and broadcast if available. To find a station, press OK. The frequency display starts to run up as the device scans the FM band. Alternatively, you can tune manually by turning the NAVIGATE knob.

Now playing information

While the stream is playing, the screen shows its frequency. If RDS information is available such as station name, programme name, track title and contact details these will also be visible. If there is no information available, on the radio display you will only see the radio station frequency. Stereo broadcasts are indicated with an icon at the top of the screen, to view further information about the broadcast, press INFO button (Rem.21). Each time you press INFO button, another set of information is displayed, cycling through RDS text, further RDS text (station/programme type), frequency and today's date.

FM Settings Scan settings

By default, FM scans stop at any available station. This may result in a poor signal-to-noise ratio (hiss) from weak stations. To stop at radio stations with good signal strength only change the scan settings to 'Strong station only,' select 'Yes' to confirm.

Audio settings

All stereo stations are reproduced in stereo. For weak stations, this may result in a poor signal-to-noise ratio (hiss). To play weak stations in mono, select FM weak reception: 'Listen in mono only' and then YES to confirm.

Bluetooth & AUX In Mode

Bluetooth Mode

The Majority Bard can be paired via Bluetooth with a phone, a tablet or similar device to play audio from, via the radio speaker.

In Bluetooth mode, the radio enters the pairing mode automatically.

Documents / Resources



[MAJORITY 2024 Internet Radio Music System](#) [pdf] User Manual
2024 Internet Radio Music System, 2024, Internet Radio Music System, Radio Music System, Music System, System

References

- [!\[\]\(86b7331e04fe40a56bcff2e9c065738b_img.jpg\) Spotify - Connect](#)
- [!\[\]\(92f87f30b7499b35d0173f4346c498d6_img.jpg\) Majority – Home Audio | DAB & Internet Radios | Soundbars](#)
- [!\[\]\(497b6684f704c0aa6fbea9f0fd4d56c7_img.jpg\) Support – Majority](#)
- [!\[\]\(4320279ad715106747262028f44bd102_img.jpg\) Page not found - Spotify](#)
- [User Manual](#)

[Manuals+.](#) [Privacy Policy](#)

This website is an independent publication and is neither affiliated with nor endorsed by any of the trademark owners. The "Bluetooth®" word mark and logos are registered trademarks owned by Bluetooth SIG, Inc. The "Wi-Fi®" word mark and logos are registered trademarks owned by the Wi-Fi Alliance. Any use of these marks on this website does not imply any affiliation with or endorsement.