



MAIN STAYS
MS95-010-107-02
Memory Foam Futon



MAIN STAYS MS95-010-107-02 Memory Foam Futon Installation Guide

[Home](#) » [MAIN STAYS](#) » [MAIN STAYS MS95-010-107-02 Memory Foam Futon Installation Guide](#)

Contents

- [1 MAIN STAYS MS95-010-107-02 Memory Foam Futon](#)
- [2 Product Information](#)
- [3 Product Usage Instructions](#)
- [4 SAFETY WARNING](#)
- [5 BEFORE BEGINNING ASSEMBLY](#)
- [6 HELPFUL HINTS](#)
- [7 Warranty Information](#)
- [8 Parts](#)
- [9 HARDWARE](#)
- [10 ASSEMBLY INSTRUCTION](#)
- [11 OPERATING YOUR UNIT](#)
- [12 Documents / Resources](#)
 - [12.1 References](#)



MAIN STAYS MS95-010-107-02 Memory Foam Futon



Product Information

- **Model:** MS95-010-107-02, MS95-010-107-03, MS56-010-107-06
- **Color Options:** BC-267 BLUE, BC-267 GREY
- **Material:** Faux Suede Fabric

Product Usage Instructions

Assembly:

1. Identify all parts included in the package.
2. Follow the step-by-step assembly instructions provided in the manual.
3. Ensure all screws and bolts are securely tightened.

Usage:

Place the futon in the desired location in your living space. To convert it into a bed, follow these steps:

1. Remove any pillows or cushions from the futon.
2. Unfold the futon to lay flat.
3. Add bedding such as sheets and blankets for comfort.

Cleaning and Maintenance:

To keep your faux suede fabric futon in top condition, follow these cleaning tips:

- Vacuum regularly to remove dust and debris.
- Spot clean with a damp cloth and mild detergent for stains.
- Avoid using harsh chemicals or abrasive cleaners.

Frequently Asked Questions (FAQ):

- **Q: Can the futon be used as a permanent bed?**

A: While the futon can serve as a sleeping space, it is designed for occasional use and may not provide the same comfort as a traditional bed for long-term use.

- **Q: How do I maintain the shape of the futon?**

A: Rotate and flip the futon mattress regularly to ensure even wear and maintain its shape over time.

Model:

- MS95-010-107-02
- MS95-010-107-03
- MS56-010-107-06
- BC-267 BLUE
- BC-267 GREY

Faux Suede Fabric Futon

DO NOT RETURN PRODUCT TO THE STORE

- Individual stores do not stock parts.
- If part is missing or damaged, call our toll free customer service line for assistance.
- Your receipt from Walmart is required for warranty coverage.

Need Parts or Assistance?

[855-430-8943](tel:855-430-8943)

For prompt, reliable service; please have your assembly manual ready.

- Date of Purchase
- Lot Number

SAFETY WARNING

- This futon has been designed for seating and as an alternate sleep product for up to two (2) average adults. To prevent injury and damage to this unit, PROHIBIT jumps on the seat and back.
- This product is designed for home use and not intended for commercial use.
- WARNING FOR YOUNG CHILDREN – This product contains small components, please ensure that they are kept away from small children. Children under the age of 5, small infants, and babies must not sleep on this futon for safety reasons.
- Recommended # of people needed for assembly 1 (however it is always better to have an extra hand.)
Estimated assembly time is 15 minutes.
- THIS INSTRUCTION BOOKLET CONTAINS IMPORTANT SAFETY INFORMATION. PLEASE READ AND KEEP FOR FUTURE REFERENCE.

BEFORE BEGINNING ASSEMBLY

- Read each step carefully. Each step of instruction must be performed in the correct order. If these steps are not followed in sequence, assembly difficulties will occur.
- Make sure all parts are included. Most parts are labeled or stamped on the raw edge.
- Work in a spacious area, preferably on a carpet, near the place the unit will be used.
- Do not use power tools to assemble your furniture. Power tools may strip or damage the parts.

HELPFUL HINTS

- Call our toll-free number if you need assistance.
- Move your new furniture carefully, with two people lift and carry the unit to its new location.
- Never push, drag, or pull your furniture (especially on carpet).
- Your furniture can be disassembled and reassembled to move.
- Additional parts are available for a nominal fee.
- Access [Youtube.com](https://www.youtube.com) for helpful videos: search “assembling your Walmart futon”

QR Code:



Warranty Information

- NISCO warrants this product to be free from defects in material and workmanship and agrees to remedy any such defect. This warranty covers one year from the date of original purchase. This is solely limited to the repair or replacement of defective parts and no assembly labor is included.
- This warranty does not apply to any product that has been improperly assembled, subjected to misuse or abuse, or which has been altered or repaired in any way. Liability for consequential damages is excluded to the extent that exclusion is permitted by law. This warranty gives you specific legal rights and you may also have other rights which vary from state to state.
- To obtain service, the purchaser must present an original Walmart receipt for proof of purchase. Third-party sales will void the warranty. Components repaired or replaced are warranted through the remainder of the original warranty period only. The defective components will be repaired or replaced without charge, subject to the terms and conditions described above.

For help with assembly, identifying parts, product information, or ordering parts, please contact us:

- **Call us at:**

[855-430-8943](tel:855-430-8943)

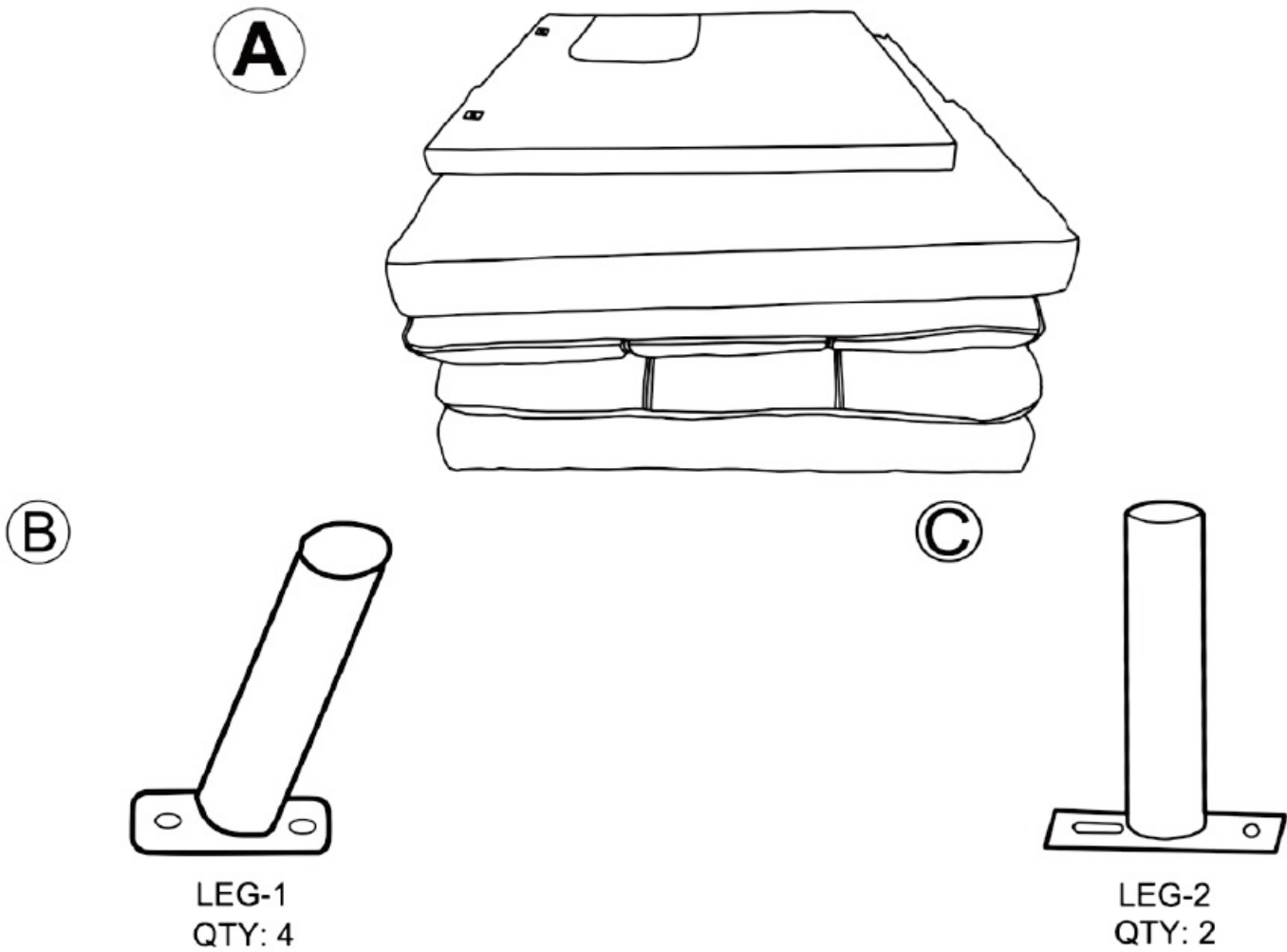
- Monday – Friday
- 8:00 am – 6:00 pm (Pacific Time)

- **Email to:**

futonhelp@gmail.com.

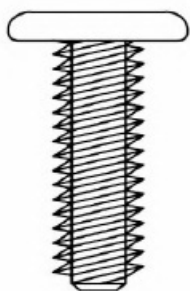
- **Write to:**

Parts



HARDWARE

a



BOLT-2
M10 X33MM
QTY: 12

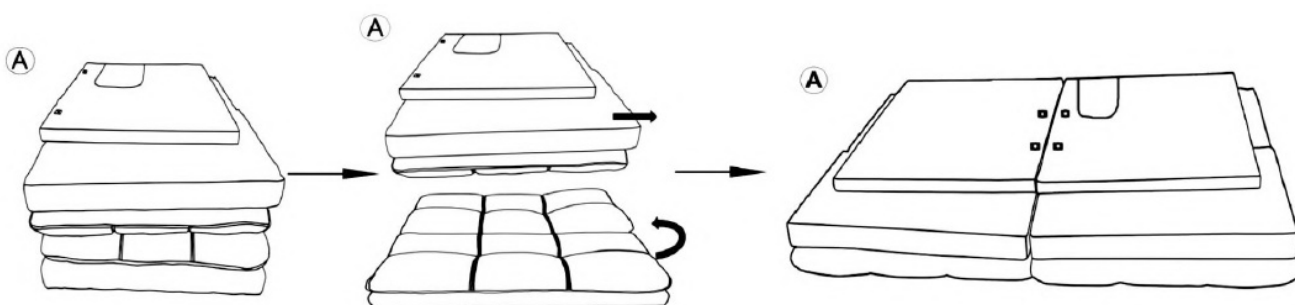
1



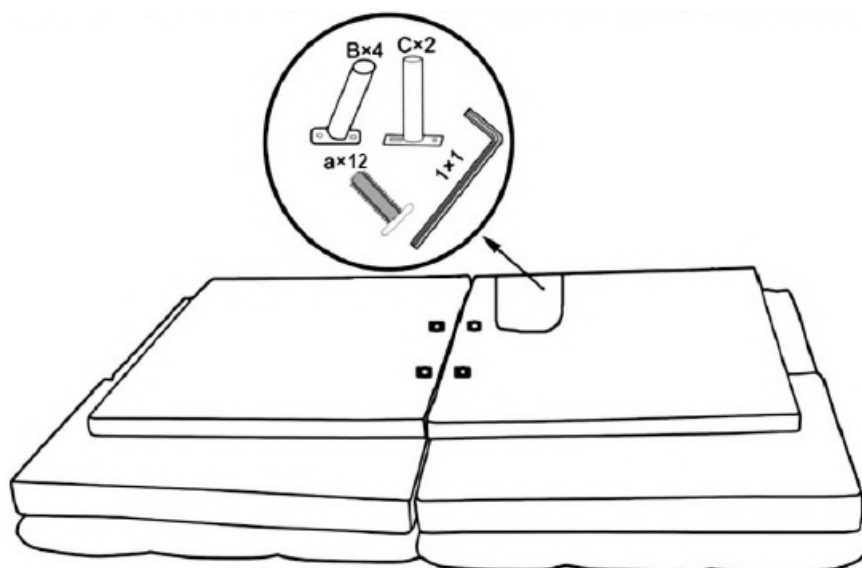
HEX KEY-1
6mm
QTY: 1

ASSEMBLY INSTRUCTION

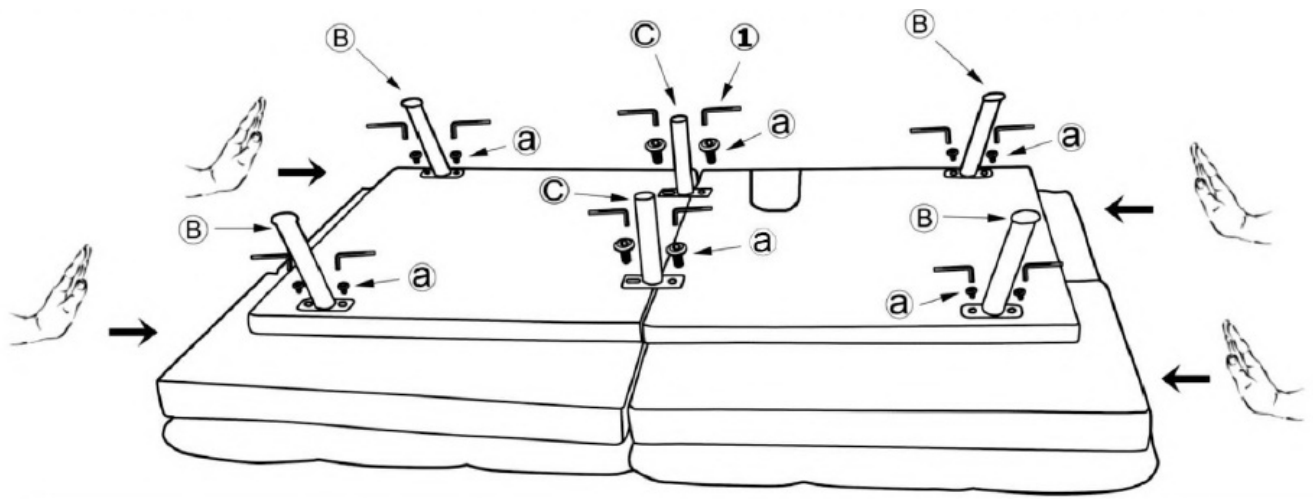
1. As shown below, unfold the cushion (A) and then go to the next step.



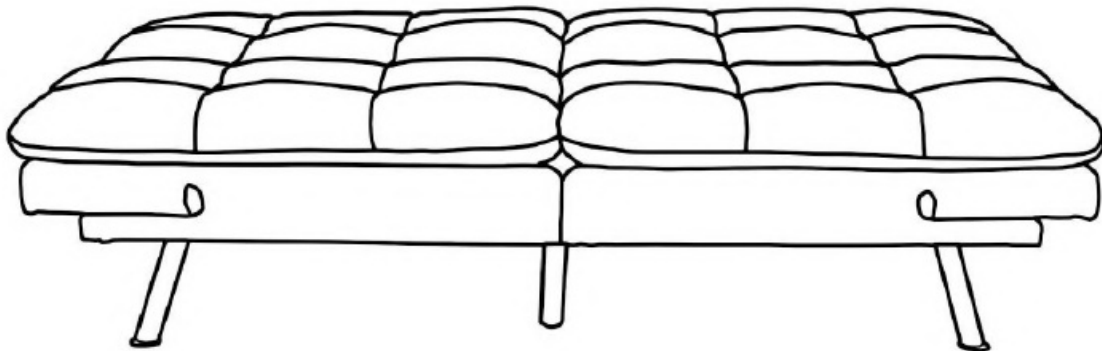
2. Open the flap and find the legs (B) (C), bolts (a), and hex key (1) inserted inside the cushion(A), as shown below.



3. Fix legs (B) with bolt (a) by hex key(1), and fix legs (C) with bolt (a) by hex key (1), as shown below.



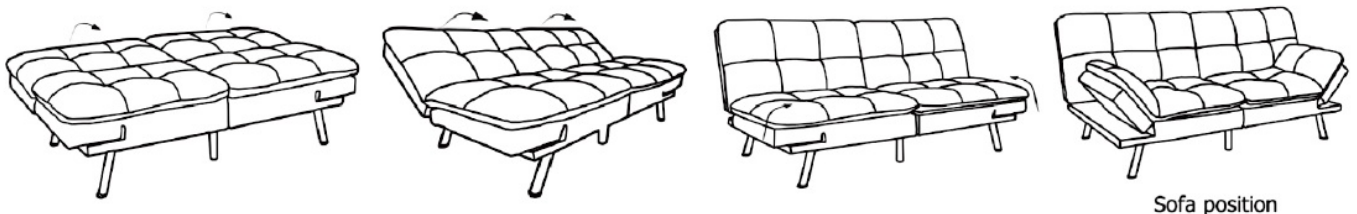
4. **Completed!** Turn the futon all over & set it on its legs.



OPERATING YOUR UNIT

Converting to Sofa:

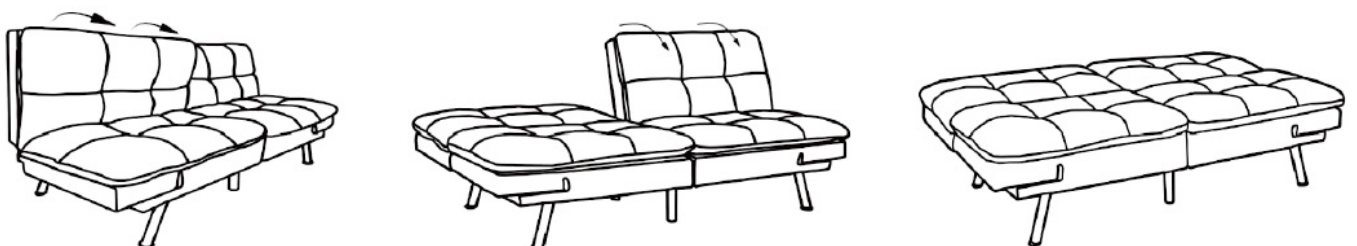
In the bed (flat) position, simply lift the backrest or armrest upwards with each click sound until you reach the sofa position.



Sofa position

Converting to bed:

from the sofa or split position, lift the backrest all the way upwards until the last click is heard which unlocks the mechanism, and carefully returns to a flat position.



Split back position

Bed position

Documents / Resources



[MAIN STAYS MS95-010-107-02 Memory Foam Futon](#) [pdf] Installation Guide
MS95-010-107-02 Memory Foam Futon, MS95-010-107-02, Memory Foam Futon, Foam Futon, Futon

References

- [User Manual](#)

[Manuals+](#), [Privacy Policy](#)

This website is an independent publication and is neither affiliated with nor endorsed by any of the trademark owners. The "Bluetooth®" word mark and logos are registered trademarks owned by Bluetooth SIG, Inc. The "Wi-Fi®" word mark and logos are registered trademarks owned by the Wi-Fi Alliance. Any use of these marks on this website does not imply any affiliation with or endorsement.