



MAIL CHIME MAIL-1200 Mailbox Notification System User Manual

[Home](#) » [Mail Chime](#) » MAIL CHIME MAIL-1200 Mailbox Notification System User Manual 

Contents

- [1 MAIL CHIME MAIL-1200 Mailbox Notification System](#)
- [2 Mail Chime](#)
- [3 Package Contents](#)
- [4 Parameters](#)
- [5 Operation of Mail Chime 2](#)
- [6 Installation](#)
- [7 Operating Instructions](#)
- [8 Safety Precautions](#)
- [9 FCC Information](#)
- [10 Troubleshooting](#)
- [11 Documents / Resources](#)
 - [11.1 References](#)
- [12 Related Posts](#)

MAIL
CHIME

MAIL CHIME MAIL-1200 Mailbox Notification System



Specifications

- **Voltage of receiver:** AC 100V~250V
- **Working distance:** 750 feet in open area
- **Volume range:** 0~110dB, 5 levels (adjustable)
- **Optional chime quantity:** 1
- **Battery of mail sensor:** Energizer A23
- **Water protection (Mail sensor):** N/A
- **Standby status of mail sensor:** Standby status arrow marks toward the Sky
- **Triggering way of mail sensor:** Radio frequency

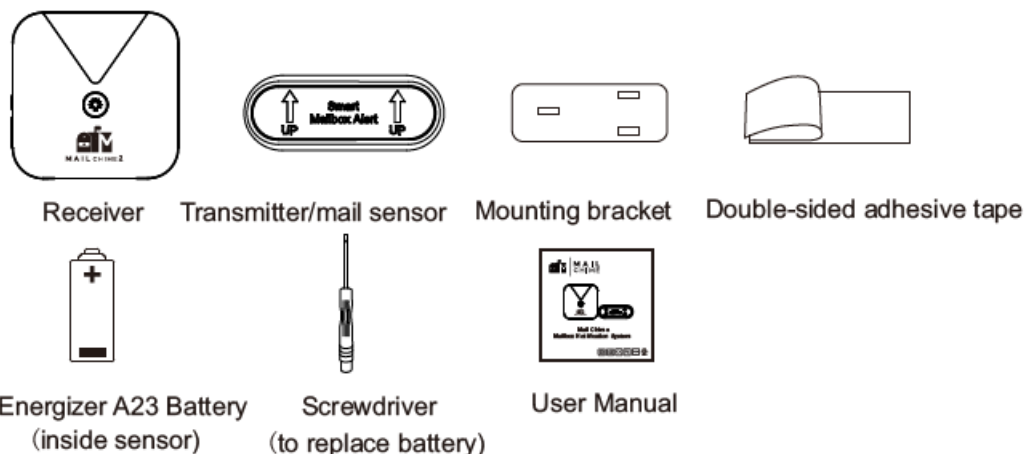
Installation

1. **Plug Receiver:** Plug the receiver into an AC outlet in the room where you want to receive notifications.
2. **Activate the Battery:** Pull and remove the battery protector in the transmitter. If it's too tight, loosen the screws in the back cover a little.
3. **Test operation:** Hold the mail sensor with arrows pointing up and rotate the sensor to simulate your mailbox door opening. Notice the receiver chiming to confirm the operation.
4. **Install the Transmitter Bracket:** Wipe the mailbox door and then stick the transmitter bracket with double-sided adhesive tape onto the mailbox's door.
5. **Install the Transmitter:** Attach the transmitter to the bracket with arrows on the transmitter pointing up towards the top of the mailbox door.

Mail Chime

Mailbox Notification System

Package Contents



Parameters

Voltage of receiver	AC 100V~250V
Working distance	750 feet in open area
Volume range	0~110dB, 5 levels (adjustable)
Optional chime qty	10 pcs
Battery of mail sensor	Energizer A23 battery
Water protection (Mail sensor)	IP55
Standby status of mail sensor	Arrow marks toward the Sky
Triggering way of mail sensor	Rotate it ($>45^{\circ}$, from vertical)
Radio frequency	433.92MHz

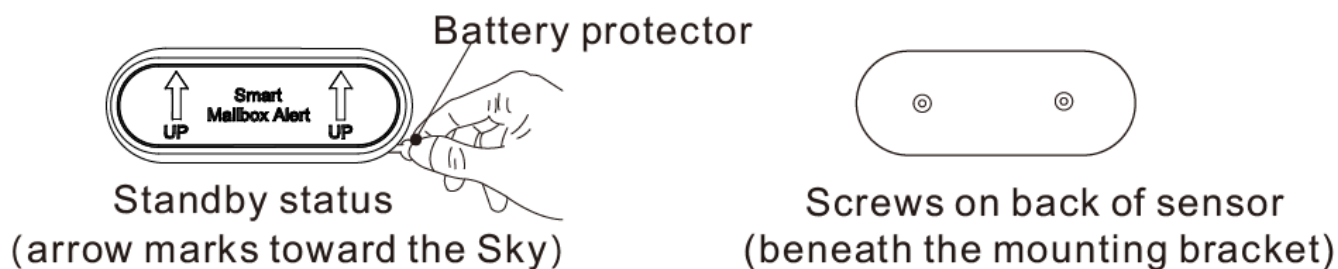
Operation of Mail Chime 2

- Mail chime tells you when mail arrives. The device consists of a receiver and a transmitter.
- When your mailbox is opened, the receiver will chime & flash indicator (instant notification) to tell that you have mail.
- Indicator light keeps flashing (continuous notification) until turned off by pressing the button in the middle of receiver. Then receiver will stay in standby mode and look for next mailbox opening.
- You also can use your receiver with other types of devices we have such as driveway sensor, door sensor, motion sensor and doorbell button.
- Please check our website or contact us at mail@mailchime.com if you would like to expand your system by adding additional sensors.

Installation

Plug Receiver: Plug receiver into an AC outlet in room, then it will work.

- Please choose an unobstructed outlet so that you can see the flashing indicator when mailbox opened and turn it off by button.
- **Activate the Battery:** Pull and remove the battery protector in the transmitter. If it's too tight, loosen the screws in back cover a little.



Test operation

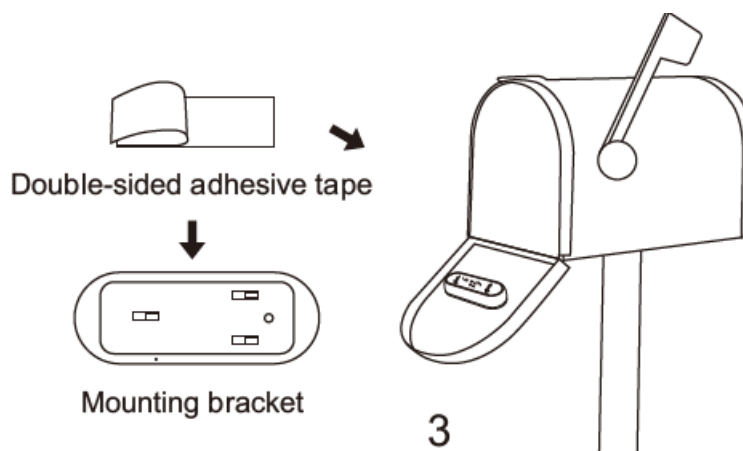
Hold the mail sensor with arrows pointing up and rotate the sensor to simulate your mailbox door opening and notice receiver chiming to confirm the operation.

Install the Transmitter Bracket

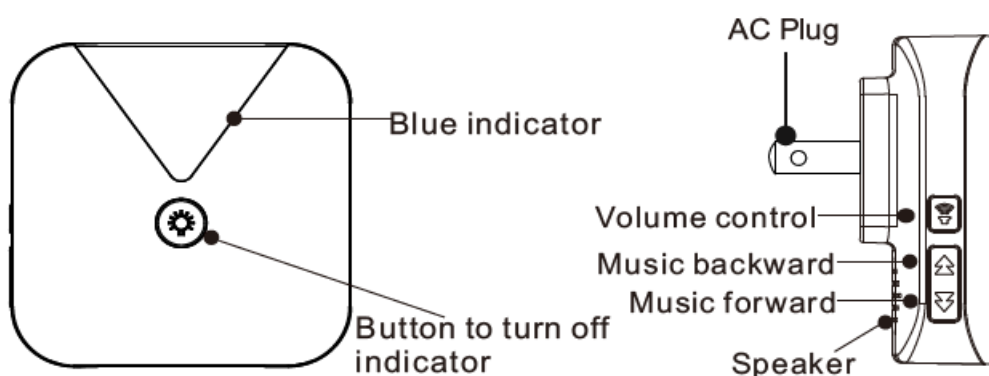
Wipe the mailbox door and then stick the transmitter bracket with double-sided adhesive tape onto mailbox's door. See diagram below.

Install the Transmitter

- Next attach the transmitter to the bracket. Make sure to mount it with arrows on transmitter pointing up towards the top of mailbox door.
- Mail sensor will keep sending signal if mailbox door left open. This may trigger chime and also reduce battery life.



Operating Instructions





1. Volume Adjustment




- There are 5 levels of volume, range from 0dB (mute mode)~110dB.

- Press the Volume Control Button on left side of receiver repeatedly to get desired volume  level.

2. Music/Chime Selection

- Receiver has 10 music/chimes. Use Music  Forward and
- Backward  buttons to cycle and choose the desired one.
- To set and activate the chosen music/chimes, follow step 3 on page 5.

3. Pairing Mail Sensor and Setting Music/ Chime

- Set Receiver into “pairing mode” by the operations below.
- Press Volume Control button  simultaneously and quickly. & Music Forward button *  Or press Volume Control Button for 5 seconds. Teas mil bearer earing erschicages the faring ready stoups.
- Next, quickly trigger mail sensor within 5 seconds (see Note1) by rotating it (> 45°) forward or  backward. Receiver will play the music/chime you selected, which means that your operation is completed successfully. i Receiver will exit pairing mode automatically without getting sign from transmitter after 5s has passed.

4. For Pairing Additional Mail Sensor Just repeat Step 2 & Step 3a-3b for each additional tile sensor.

- Pair and set only one sensor at a time to avoid interference. Different or same music/chime can be set for each sensor.

5. For Pairing other type of transmitters

- Receiver can work with 10 transmitters at most and compatible with emergency button, doorbell button, door sensor and motion sensor. Each one can be set same or different chime/music
- Repeat Step 2 & Step 3a-3b to pair more transmitters with receiver. Different transmitters have distinct triggering ways.
- Continuous notification is only for mail sensor, other transmitters ONLY have instant notification.
- **Doorbell & emergency button:** Press down button to trigger.
- **Door sensor:** Put the main unit & magnetic stripe closely and then separate them to trigger.
- **Motion sensor:** After entering learning mode, switch motion sensor on quickly; when indicator lights up, wave your hand quickly in front of the sensor to trigger.

6. Press the Music Control Forward button for 5 seconds until you will hear an “alert chirp” and see a SINGLE quick flash.

- Pairing will be cleared up and receiver chime turn into default one. You can trigger transmitters to verify the reset before re-pairing.

Safety Precautions

- Do not insert sharp objects or spill liquid on the product. This may cause accidental fire, electric shock, or failure.
- Do not attempt to modify this device.
- Keep this product out of reach of children.

- To dispose this product properly, please follow the recycling process regulated in your area.

FCC Information

This device complies with Part 15 of the FCC rules. Operation is subject to the following two conditions:

1. This device may not cause harmful interference, and
2. this device must accept any interference received, including interference that may cause undesired operation.

Troubleshooting

Light keeps flashing.

Reason: Receiver is doing continuous notification after mailbox opened. **Solution:** Press the button in middle of receiver.

No chiming when mailbox opened.

1. **Reason 1:** No battery or low-power battery in transmitter.
The less power in transmitter, the shorter range.
Solution: Replace it with a new battery.
2. **Reason 2:** Transmitter/ receiver lost pairing due to some reason. **Solution:** Re-pair receiver and transmitter per instruction on Page 5.
3. **Reason 3:** Receiver volume level is 0 dB.
4. **Solution:** Press volume control button to get higher sound.

Press down light button but indicator lights up again and receiver rings immediately.

- **Reason:** Mailbox door is unclosed and receiver gets signal again.
- **Solution:** Close mailbox door to recover standby status.
- **Receiver** sounds itself without triggering
- **Reason:** Interfered by other device.
- **Solution:** Reset the receiver and re-pairing the transmitters with it.

Thank you for your purchase of

- Proudly family owned USA based business for 20+ years.
- If you have any questions or have any problem setting it up, please feel free to contact us:
- www.mailchime.com
- mail@mailchime.com

1-309-788-1982

We are honored to gain you as a customer and hope to serve you for a long time.

Documents / Resources



[MAIL CHIME MAIL-1200 Mailbox Notification System](#) [pdf] User Manual
MAIL-1200 Mailbox Notification System, MAIL-1200, Mailbox Notification System, Notification System, System

References

- [📺 Home - Mail Chime](#)
- [User Manual](#)

[Manuals+](#), [Privacy Policy](#)