



MAIER 3889540 Built-in Key Step Instructions

[Home](#) » [MAIER](#) » MAIER 3889540 Built-in Key Step Instructions 

Contents

- [1 MAIER 3889540 Built-in Key Step](#)
- [2 Product Information](#)
- [3 DEMENSIONS](#)
- [4 Installation Instructions](#)
- [5 Documents / Resources](#)
 - [5.1 References](#)
- [6 Related Posts](#)



MAIER

MAIER 3889540 Built-in Key Step



Product Information

Specifications

- **Reference Number:** REF. 43016
- **Model:** 43016
- **Duration:** 60 minutes
- **Built-in key step:** Llave de paso empotrar
- **Size:** 1/2
- **Maximum Temperature:** 45°C
- **Plastic Part:** Not removable

Product Usage Instructions

Step 1: Installation

1. Choose a suitable location for the product.
2. Ensure that the water supply is turned off.
3. Prepare the wall for installation by making a hole of appropriate size.
4. Insert the built-in key step into the hole.
5. Tighten the key step using a suitable tool until it is securely fixed.

Step 2: Setting the Duration

1. Locate the duration adjustment mechanism on the product.
2. Rotate the adjustment dial to set the desired duration. The available options are in increments of 30 minutes.

Step 3: Usage

1. Turn on the water supply using the built-in key step.
2. The product will automatically start the countdown based on the set duration
3. Once the set duration has elapsed, the product will automatically stop the water supply.

FAQ

Q: Can I remove the plastic part?

A: No, the plastic part is not designed to be removed. Please do not attempt to disassemble it.

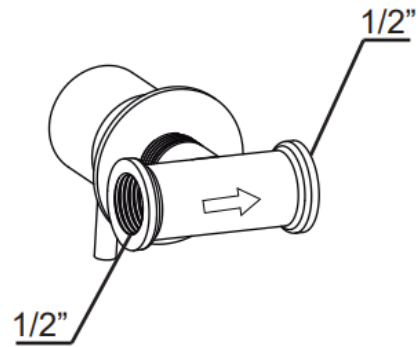
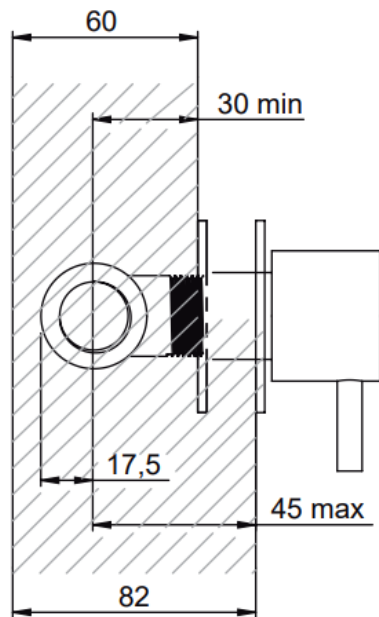
Q: Where can I find more information about the product?

A: For more information, you can contact us at info@griferiasmaier.com or visit our website at www.griferiasmaier.com.

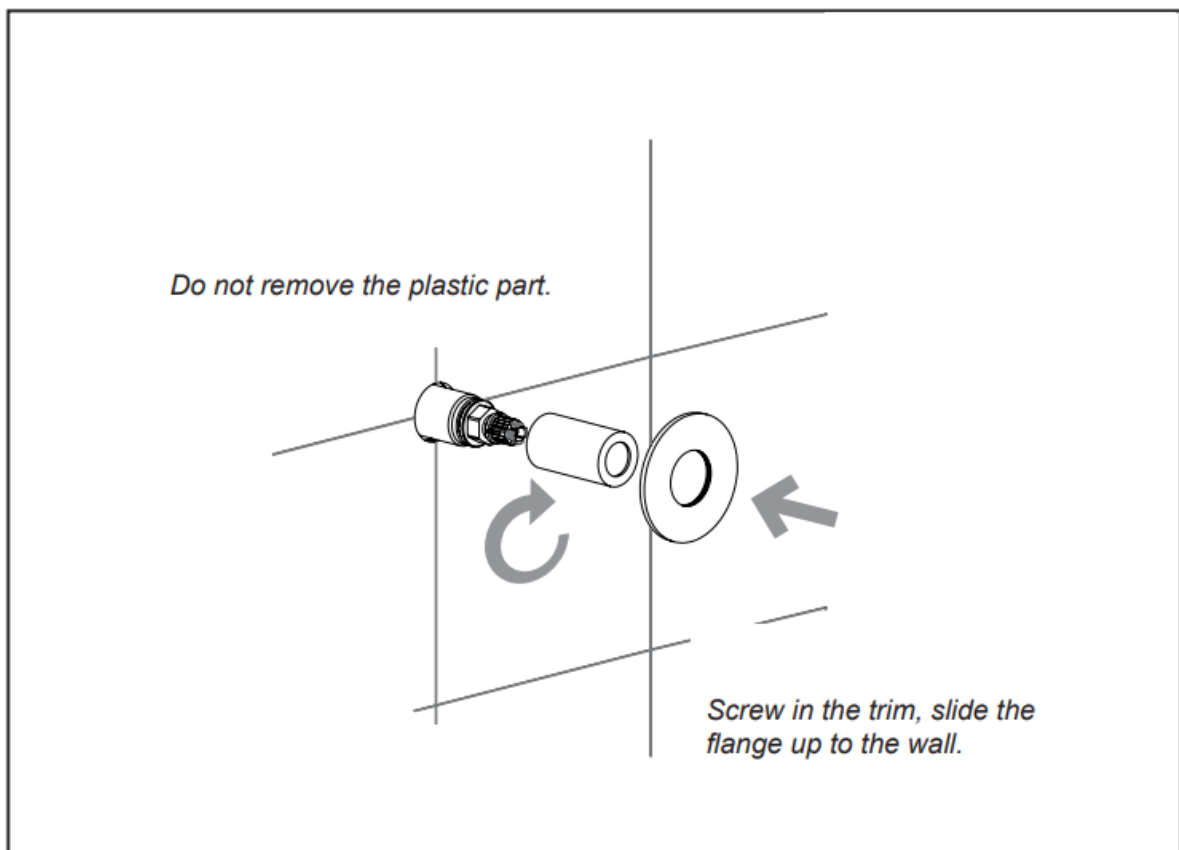
DEMENSIONS

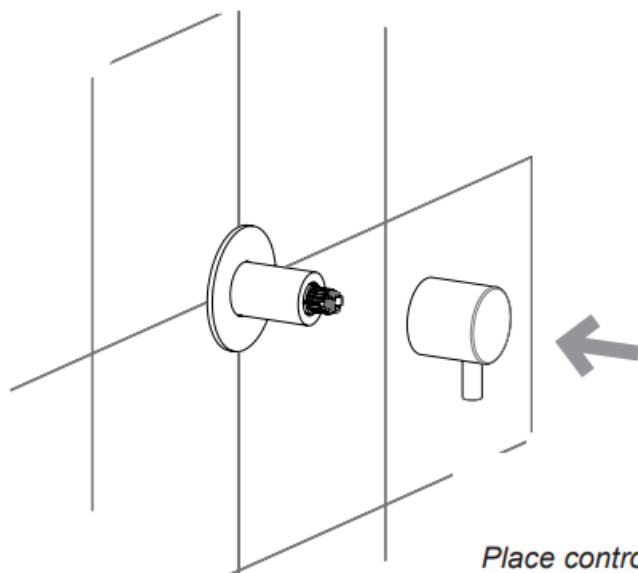
43016

Built-in key step

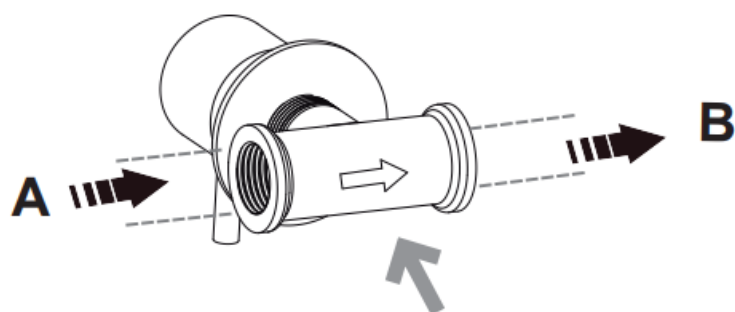


Installation Instructions







*Place control in position and
press hard even for the click.*



*Take into account the
direction of water flow*

<div>REF. 43016</div> <div></div> <div></div>	<div>MAIER 3889540 Built-in Key Step [pdf] Instructions</div> <div>3889540 Built-in Key Step, 3889540, Built-in Key Step, Key Step, Step</div>
---	--

References

-  [Griferías Maier - Griferias Maier](#)
- [User Manual](#)

[Manuals+](#), [Privacy Policy](#)

This website is an independent publication and is neither affiliated with nor endorsed by any of the trademark owners. The "Bluetooth®" word mark and logos are registered trademarks owned by Bluetooth SIG, Inc. The "Wi-Fi®" word mark and logos are registered trademarks owned by the Wi-Fi Alliance. Any use of these marks on this website does not imply any affiliation with or endorsement.