

MAIDESITE V01 Ergonomic Chair with Headrest And Backrest



MAIDESITE V01 Ergonomic Chair with Headrest And Backrest User Manual

[Home](#) » [MAIDeSiTe](#) » MAIDESITE V01 Ergonomic Chair with Headrest And Backrest User Manual 

Contents

- [1 MAIDESITE V01 Ergonomic Chair with Headrest And Backrest](#)
- [2 Product Information](#)
- [3 Product Usage Instructions](#)
- [4 Parts List](#)
- [5 Assembly instruction](#)
- [6 How to adjustable your Ergonomic Chair](#)
- [7 Reminder](#)
- [8 Contact](#)
- [9 Documents / Resources](#)
 - [9.1 References](#)

MAIDeSiTe

MAIDESITE V01 Ergonomic Chair with Headrest And Backrest



Product Information

Specifications

- **Color:** Black
- **Material:** High-quality plastic and metal
- **Weight Capacity:** Up to 250 lbs
- **Adjustability:** Seat height, seat depth, back recline, armrest height, headrest height

Frequently Asked Questions

- **Q:** How do I adjust the seat depth?
 - **A:** Pull back the seat depth adjustment lever to expose the front screw holes and tighten them with M6*30 screws.
- **Q:** Can I adjust the height of the armrests?

- **A:** Yes, the armrest height can be adjusted by following the instructions provided in the manual.
- **Q:** Is the chair suitable for multiple users?
 - **A:** No, this product is only suitable for one person.

Product Usage Instructions

Installation of Seat and Chassis

- Attach the seat to the chassis using 2 x M6*30 screws.
- Pull back the seat depth adjustment lever to expose the front screw holes.
- Tighten the screws with M6*30 screws.

Assembling the Armrests

- Attach the armrests according to the labels on the back of the chair.
- Secure the armrests with screws and close the headrest mount cover.

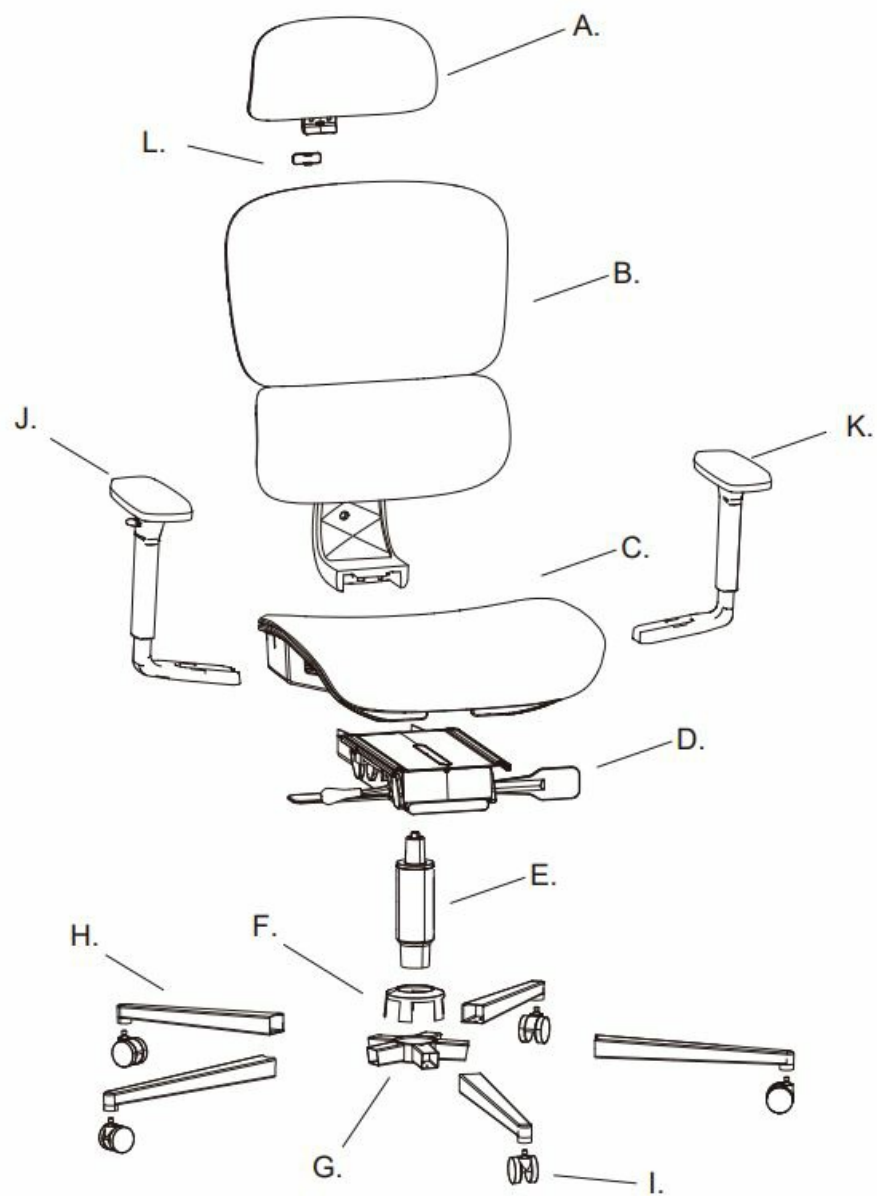
Assembling the Chair Legs and Wheels

- Insert the chair legs into the appropriate connectors.
- Attach the wheels to the chair legs. Note: The holes in the rollers may require some effort.

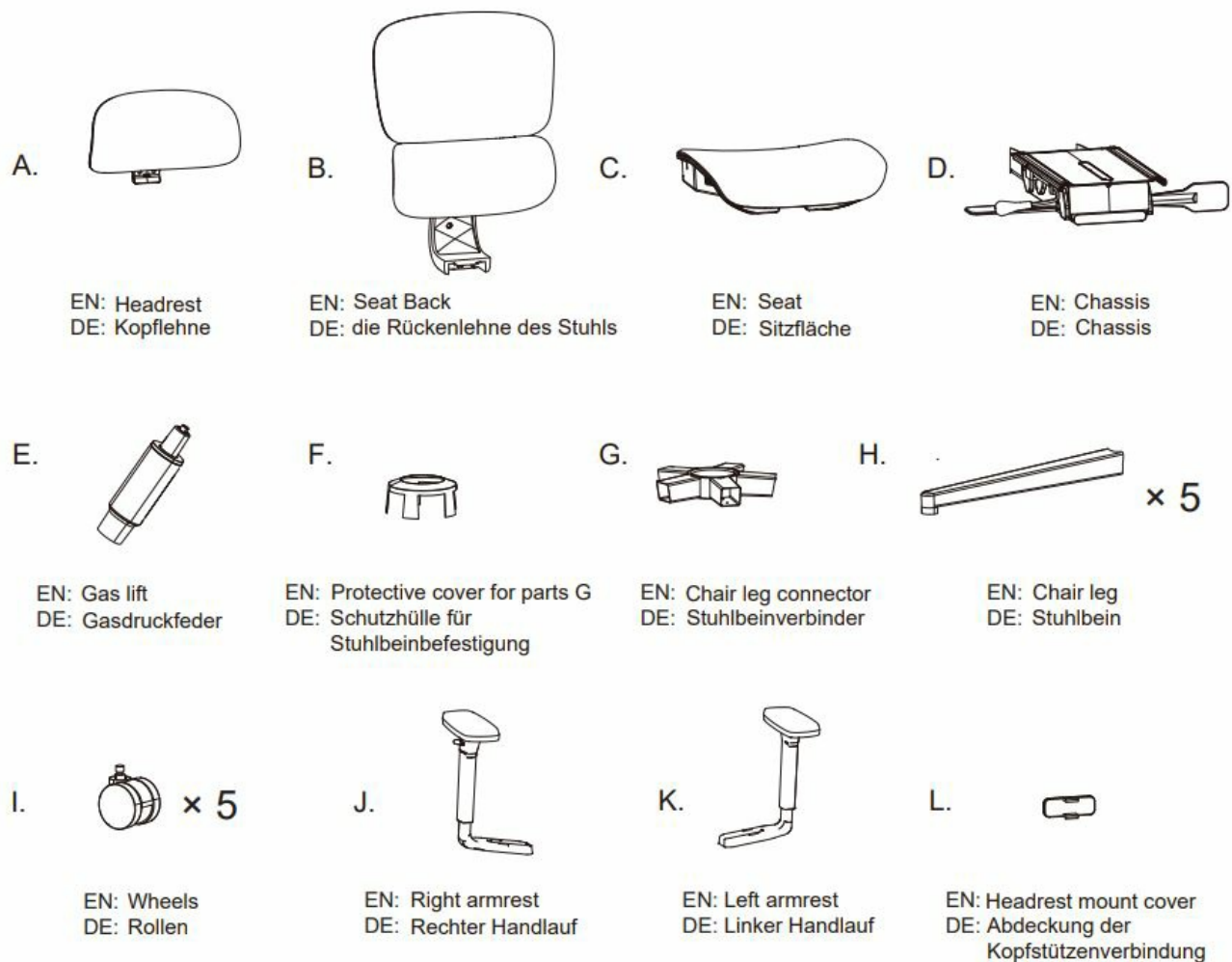
Assembling the Ergonomic Chair with Gas Lift

- Once all components are assembled, congratulations, your ergonomic chair installation is complete.

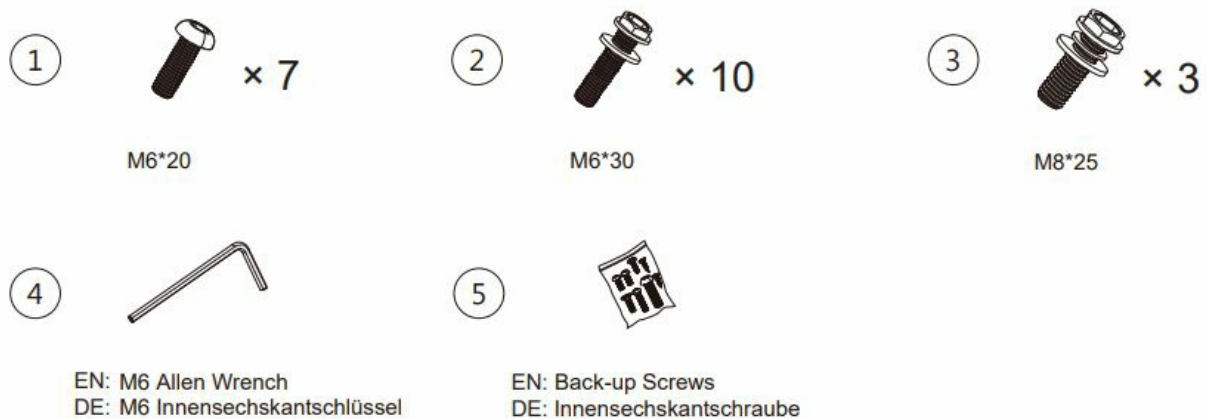
Parts List



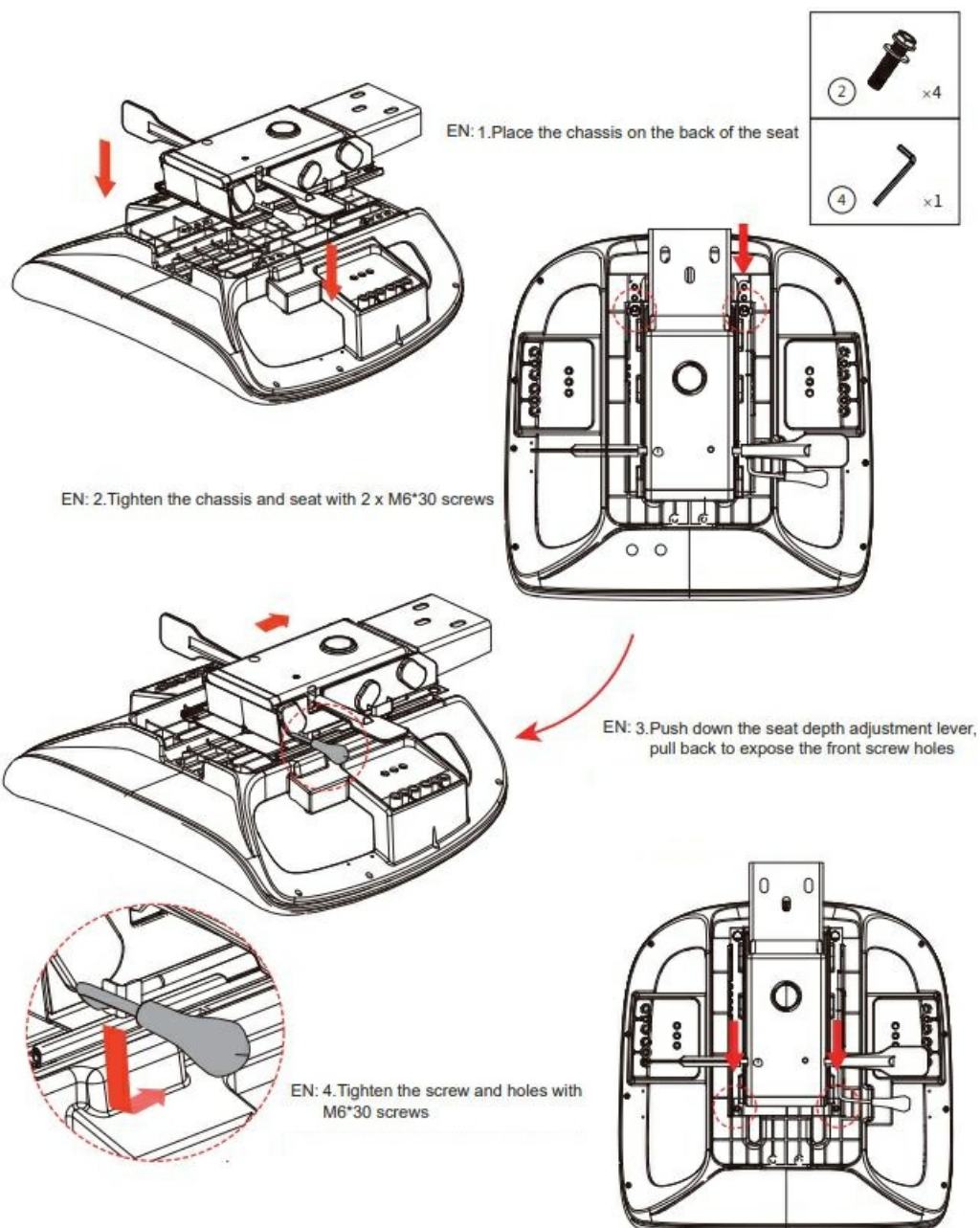
Parts List



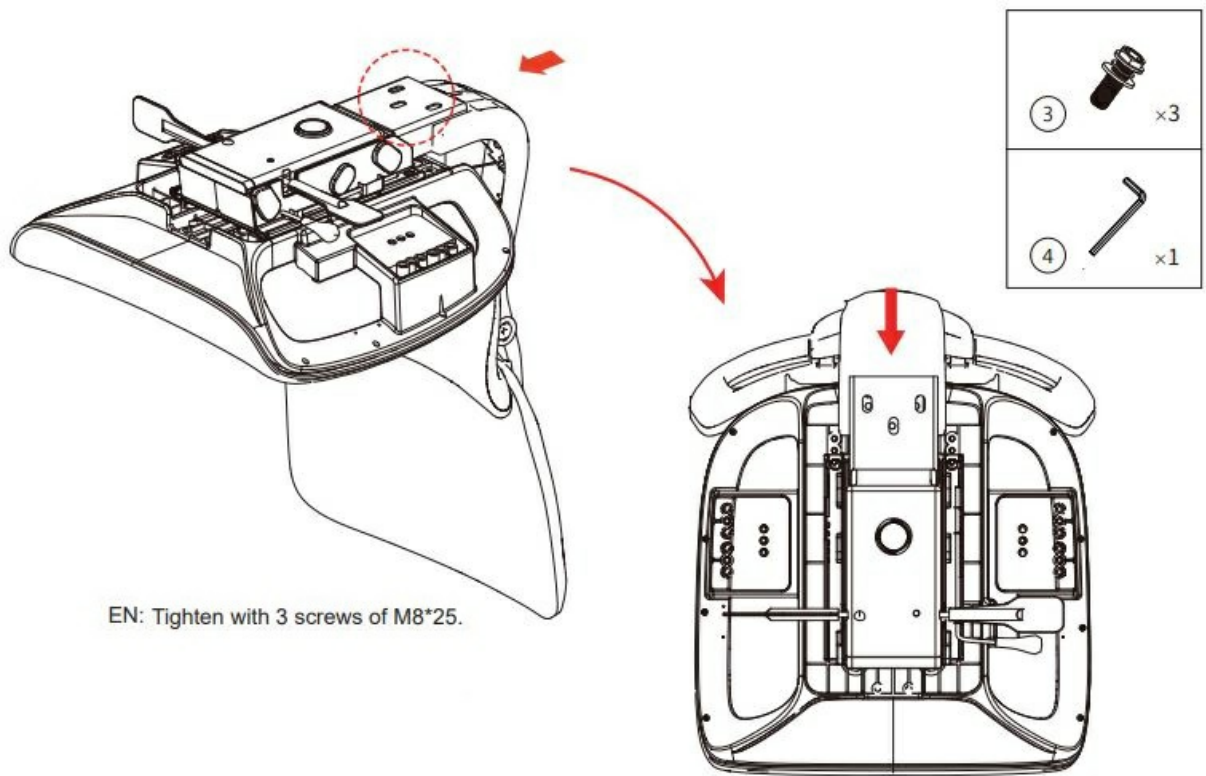
Hardware List



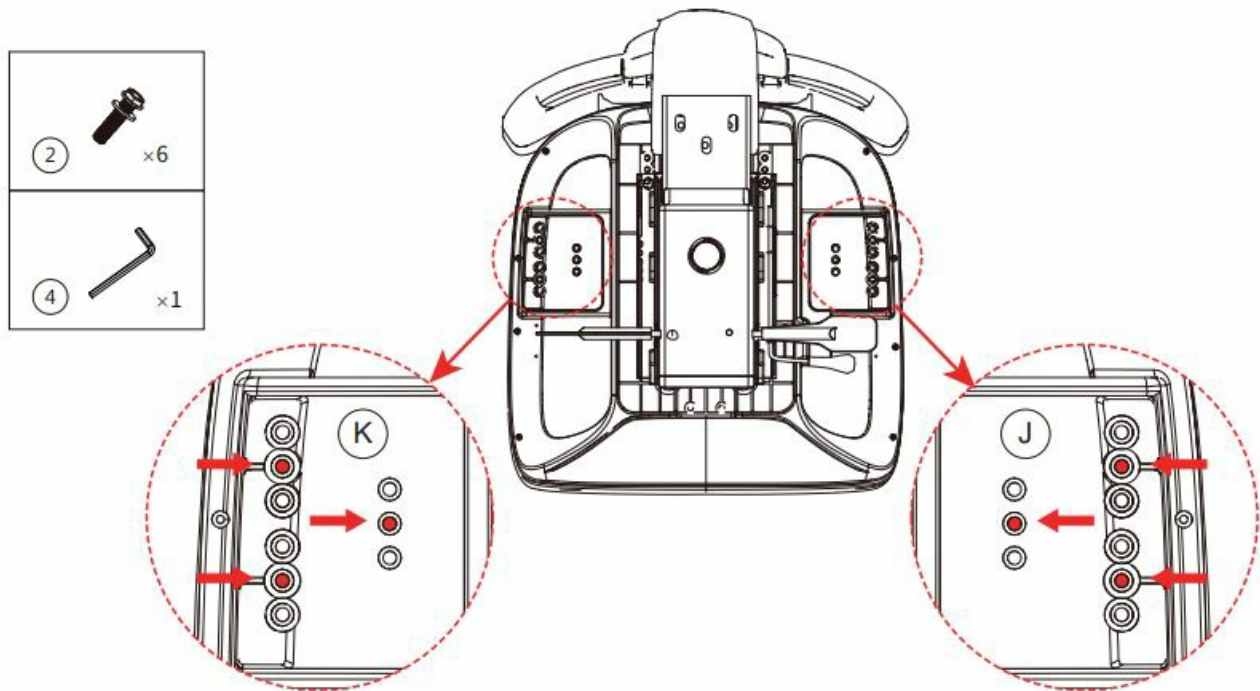
Assembly instruction

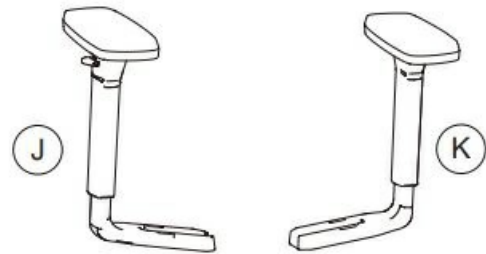
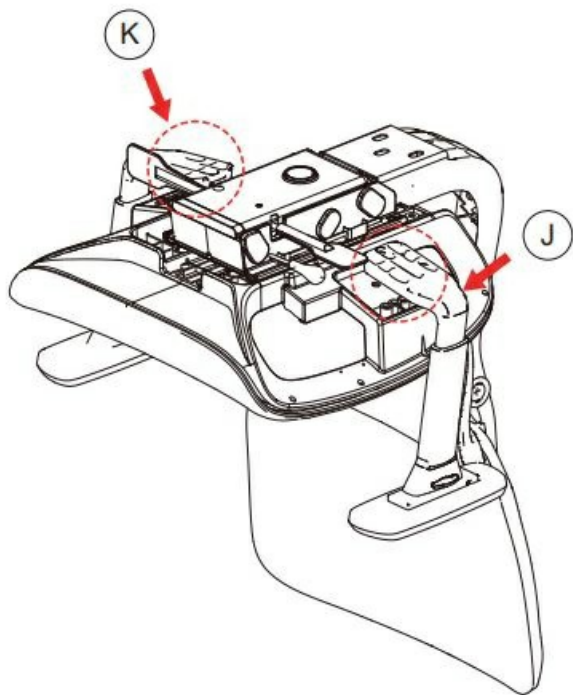


1. Installation of seat and chassis



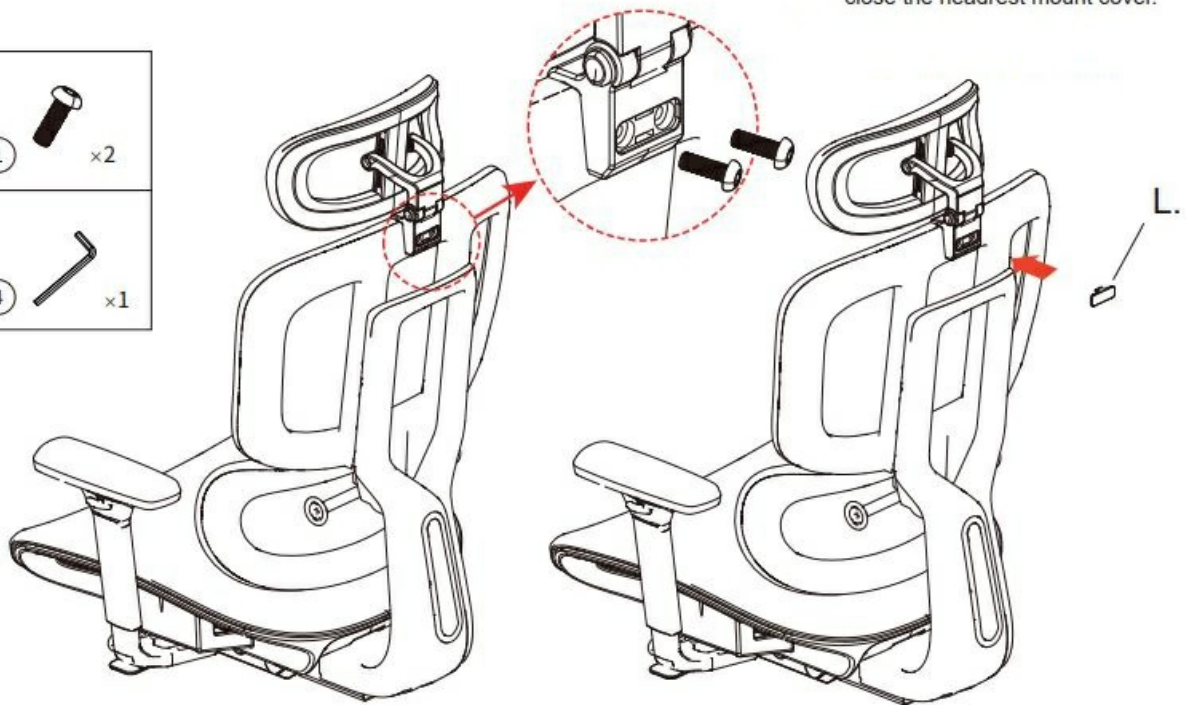
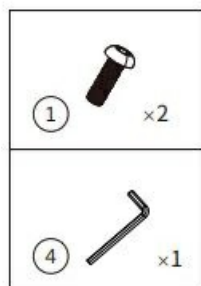
2. Installation of seat back





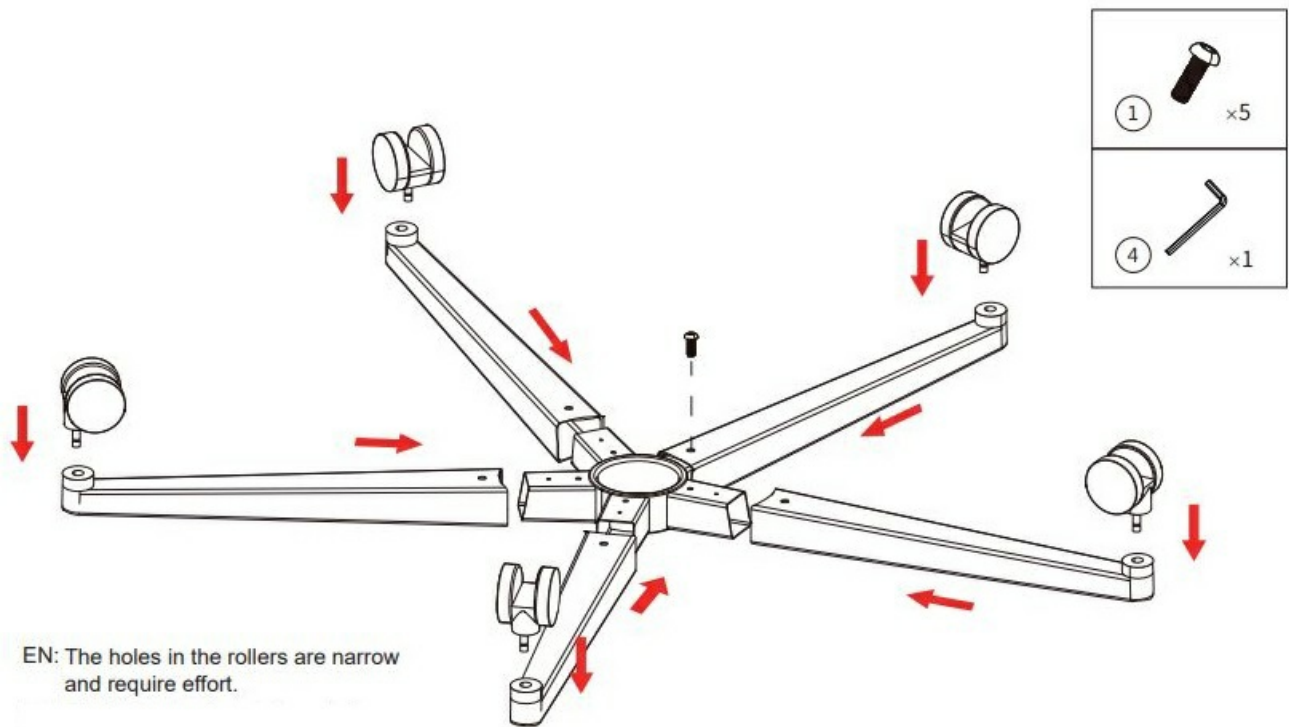
EN: When assembling, pay attention to the armrests that correspond to the labels. Attach them in the position that corresponds to the label on the back of the chair.

3. Assembling the Armrest

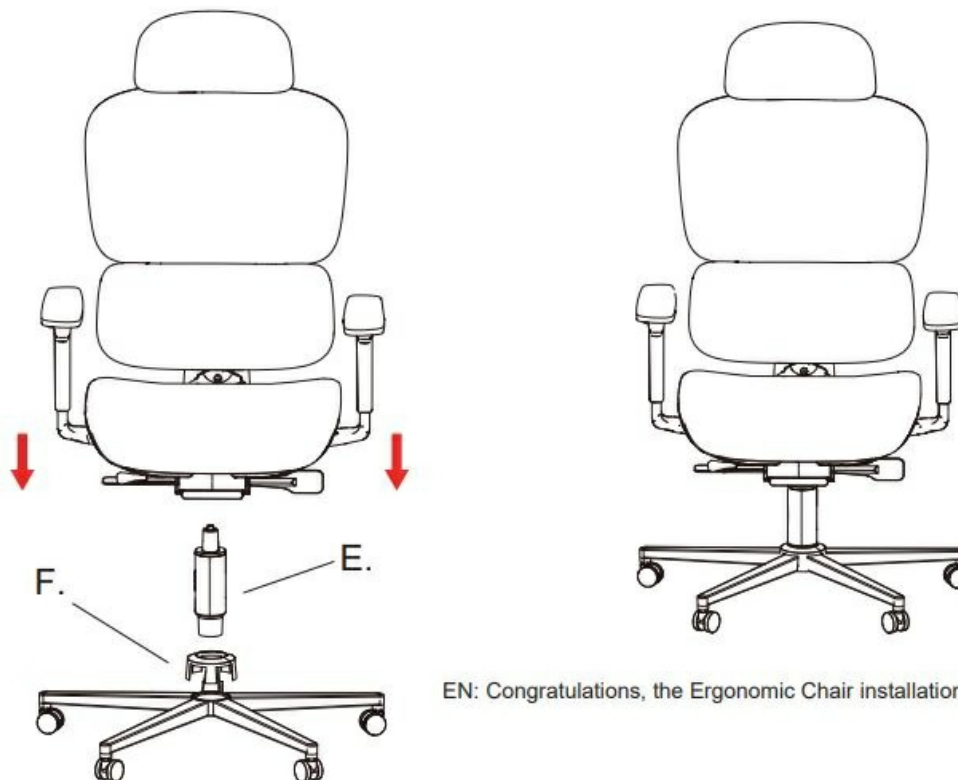


EN: After installing the screws, close the headrest mount cover.

4. Attaching the Headrest

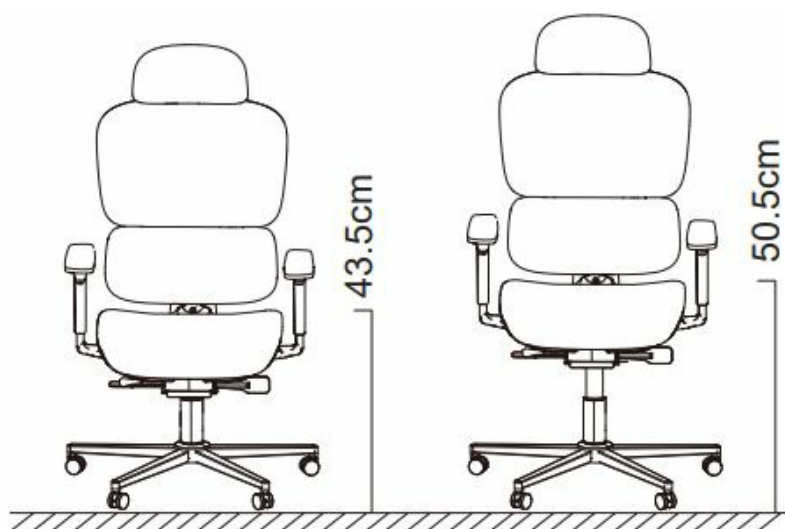
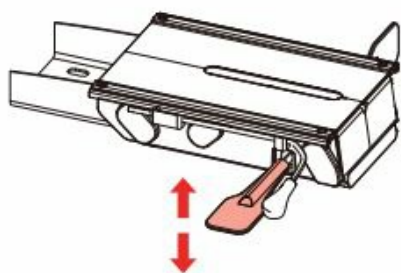


5. Assembling the Chair Legs and wheels

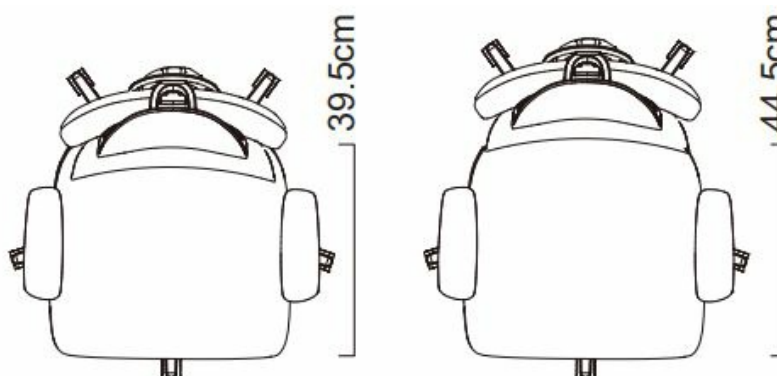
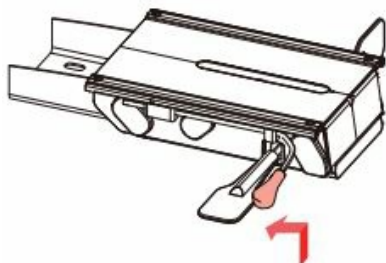


6. Assembling the Ergonomic Chair with gas lift, seat and legs together

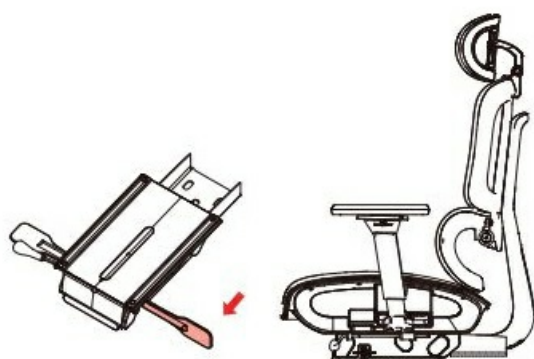
How to adjustable your Ergonomic Chair



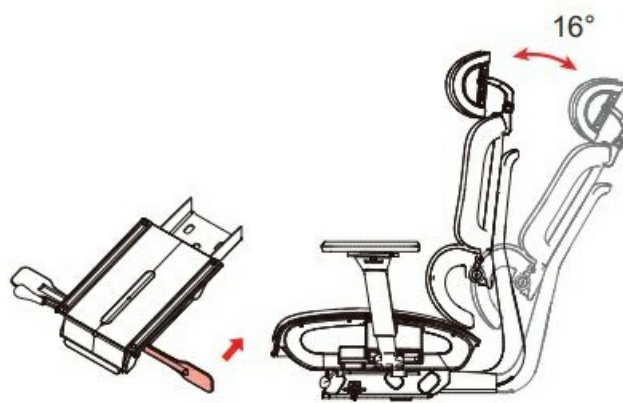
1. Adjusting the seat height



2. Seat depth adjustment



EN: Fixed mode

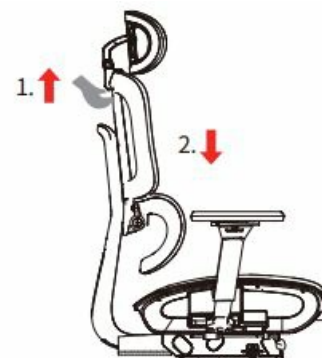


EN: Activity mode

3. Reclining mode of the seat back

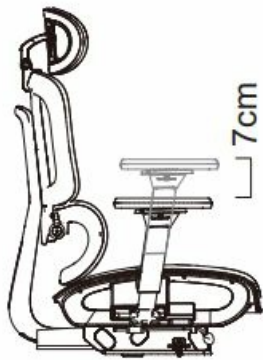


EN: Lift the back of the chair up with both hands. Each "click" sound corresponds to a height, there are 6 heights in total.

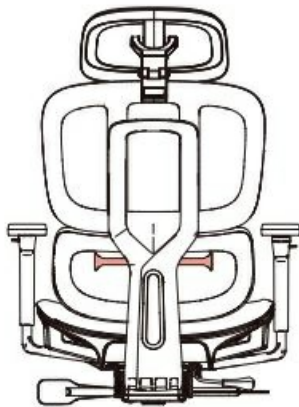
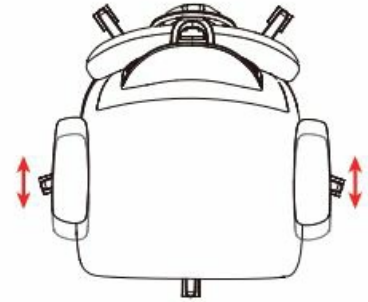
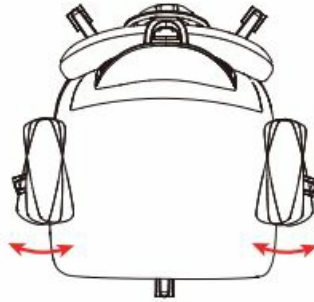


EN: 1.After pulling to the highest position
2.Automaticly fall back to first height.

4. Height adjustment of the seat back



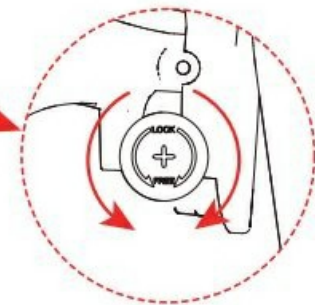
5. Adjustment of the armrest



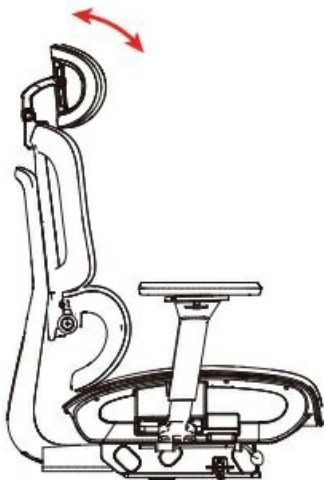
EN: Rotate at the same time for more convenience.



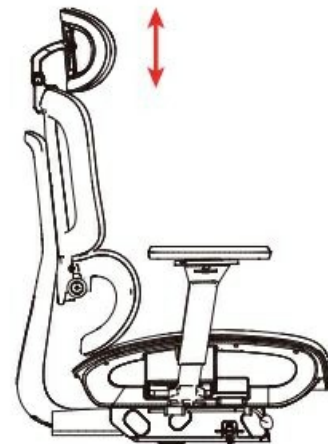
EN: The position of the lumbar support can be adjusted in three stages.



6. Adjustment of the backrest



EN: Rotary adjustment



EN: Height adjustment

7. Adjustment of the Headrest

Reminder



- After unpacking, please check the product carefully to see if there are any missing parts or any damage. If this happened, please contact us immediately.



- Please place the ergonomic chair on a stable indoor floor for use.



- Avoid proximity to sources of ignition, direct sunlight or humid areas.



- This product is only suitable for one person, do not sit on the edge of the seat.



- Do not step on the product or use it to lift heavy objects.




- Do not recline the seat back too far.




Contact

- **Email(EU):** Customerservice-EU@maidesite.com
 - **Website(EU):** www.maidesite.de
 - **Website(UK):** www.maidesite.co.uk
 - **YouTube:** Maidesite Office
 - **Facebook:** Maidesite Desk
 - **Instagram:** Maidesite Standing Desk
-

Documents / Resources

	<p>MAIDESITE V01 Ergonomic Chair with Headrest And Backrest [pdf] User Manual V01 Ergonomic Chair with Headrest And Backrest, V01, Ergonomic Chair with Headrest And Backrest, Chair with Headrest And Backrest, Headrest And Backrest, Backrest</p>
---	--

References

-  [Product Design & Development - Prodigy](#)
-  [Best Electric Standing Desk for UK home office | Healthy WFH – MaidesiteUK](#)
-  [Maidesite - Elektrisch Höhenverstellbarer Schreibtisch Online kaufen](#)
- [User Manual](#)

Manuals+. Privacy Policy

This website is an independent publication and is neither affiliated with nor endorsed by any of the trademark owners. The "Bluetooth®" word mark and logos are registered trademarks owned by Bluetooth SIG, Inc. The "Wi-Fi®" word mark and logos are registered trademarks owned by the Wi-Fi Alliance. Any use of these marks on this website does not imply any affiliation with or endorsement.