



MAGTEK Excella STX – USB or Ethernet Small Document Scanner Installation Guide

[Home](#) » [MAGTEK](#) » MAGTEK Excella STX – USB or Ethernet Small Document Scanner Installation Guide 

Contents

- [1 MAGTEK Excella STX – USB or Ethernet Small Document Scanner](#)
- [2 Start](#)
- [3 USB Installation](#)
- [4 Ethernet Installation](#)
- [5 Install Ink Cartridge\(s\)](#)
- [6 Run Excella STX Demo](#)
- [7 Documents / Resources](#)
 - [7.1 References](#)
- [8 Related Posts](#)

MAGTEK®
SECURITY FROM THE INSIDE

MAGTEK Excella STX – USB or Ethernet Small Document Scanner



Start

For USB, go to Step 2 below. For Ethernet, go to Step 3 below.

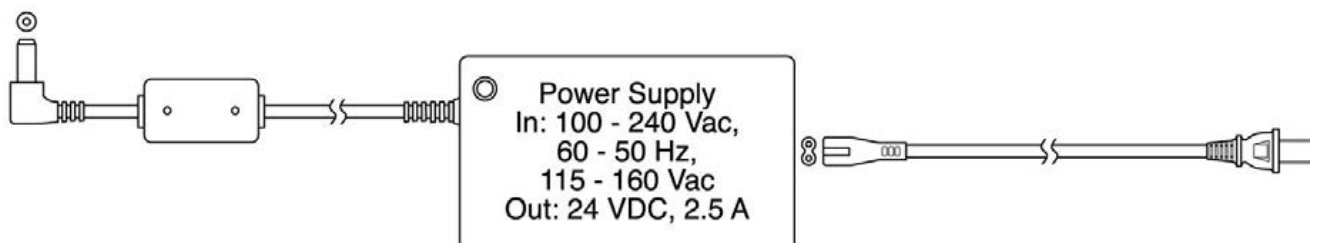
USB Installation

- RUN EXCELLA STX DEMO
- Navigate to and run C:\Program Files (x86)\MagTek\Exella-STX-ImageSafe\ Exella-STX_Demo.exe
- Click on the Exella Demo icon to run the demo; the main screen will be displayed (Figure 1).
- In the Select Device pull-down menu, choose Exella.EXC001.
- Click on the Connect button.

Connect cables

- Connect interface USB cable to Exella STX (Figure 3).
- Connect round connector from the power supply to Exella STX.
- Connect the power cord to the socket on the power supply block.
- Connect the three-prong power cord to AC wall outlet.
- Wait until only the middle LED is illuminated with a steady green.
- Connect interface cable to PC.

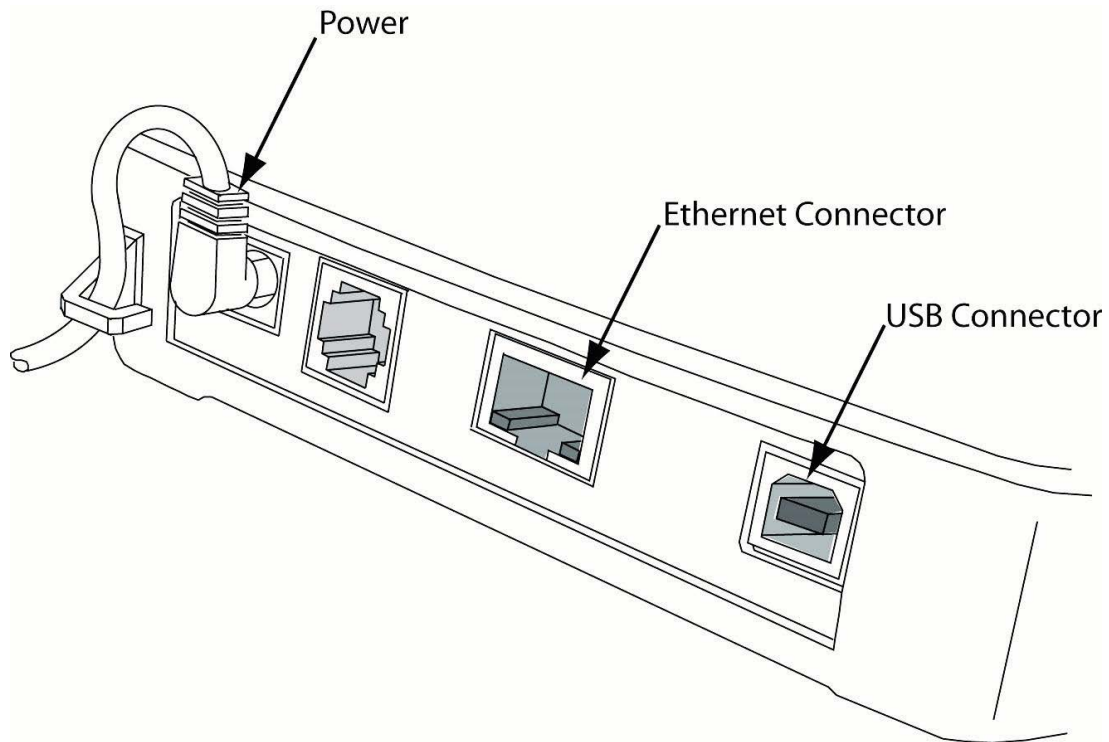
NOTE: When the device is plugged in and detected by the PC, the USB drivers will be automatically installed.



Ethernet Installation

Connect cables

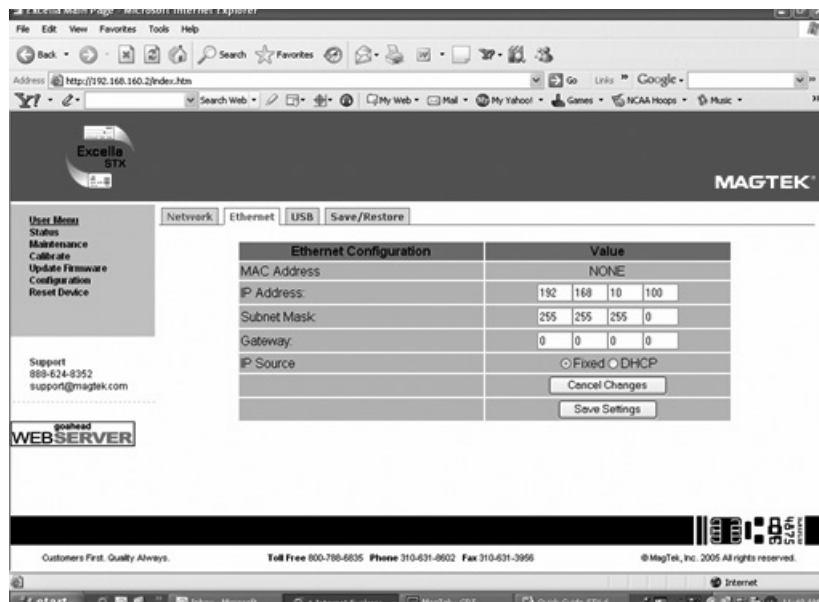
- Connect Ethernet interface cable, USB to Excella STX (Figure 3).



- Connect round connector from the power supply to Excella.
- Connect the power cord to the socket on the power supply block.
- Connect the three-prong power cord to AC wall outlet.
- Wait until only the middle LED is illuminated with a steady green.
- Connect interface cable to PC.

Ethernet Configuration

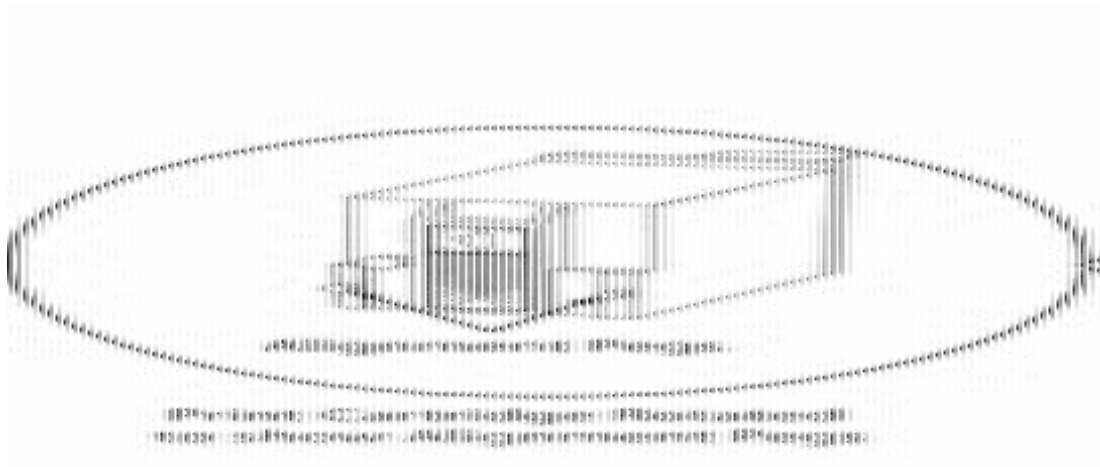
- In your web browser, type Excella STX's default Ethernet IP address as follows: <http://192.168.10.100>; Excella STX's built-in web page will be displayed.
- In the User Menu, click on Configuration.
- Select the Ethernet tab and configure all parameters shown (Figure 2).



- Click on Save Settings and close the web browser.
- Continue to Step 4, INSTALL INK CARTRIDGE(S).

Install Ink Cartridge(s)

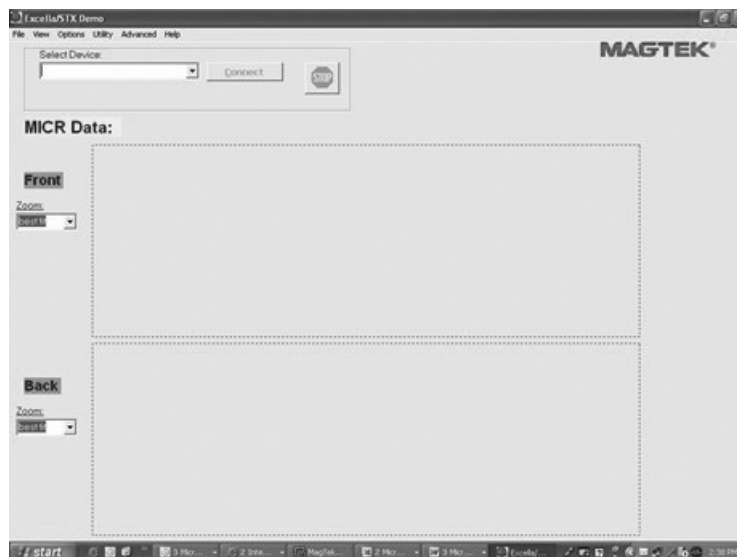
- Remove the outer cover by pressing the release buttons on each side and lifting the cover.
- Remove the center cover by pressing the rear/front release buttons and lifting the cover.
- Ensure the printer latch is down and locate the alignment pegs on the Printer/Cartridge and the guide holes in the Printer Base (Figure 4).



- Slide the alignment pegs into the guide holes as indicated.
- Raise the latch so that it touches the Printer/Cartridge.
- Press the latch into the lock position, and move the Cartridge slightly to ensure it is locked.
- If needed, perform steps 1-4 on the Front Printer/Cartridge located inside of the exit path.

Run Exella STX Demo

- Click on the Exella STX Demo icon to run the demo.
- The Demo's main screen will be displayed (Figure 5).



- In the “Select Device” window, choose the device you want to connect (USB or Ethernet).
- Click on the “Connect” button.
- Based on the document you want to read, click on one of these buttons:
 - “Check”, to read and scan checks (the left LED is blinking)
 - “Card”, to read and scan ID cards (the right LED is blinking)
 - “Check/Card”, the unit will accept either a check or a card (both LED’s blinking)
- Feed the appropriate document.
- The unit will remain in the Read/Scan mode until the “Stop” button is clicked.

MagTek ® Inc., 1710 Apollo Court, Seal Beach CA 90740 | p 562-546-6400 | support 651-415-6800 | f 562-546-6301 | www.magtek.com

MagTek®, MagnePrint®, and MagneSafe® are registered trademarks of MagTek, Inc.

MAGTEK: Registered to ISO 9001:2015 © Copyright 2021 MagTek, Inc. PN D99875344 rev 30 4/21

Documents / Resources

	<p>MAGTEK Excella STX - USB or Ethernet Small Document Scanner [pdf] Installation Guide Excella STX - USB or Ethernet Small Document Scanner</p>
--	--

References

- [Welcome to MagTek, the Leading Provider of Payments and Identification Technology : MagTek](#)