



MAGNUS REX REX CFS-100 Folding Camera Stand Owner's Manual

[Home](#) » [MAGNUS REX](#) » MAGNUS REX REX CFS-100 Folding Camera Stand Owner's Manual 



CFS-100
Folding Camera Stand



Owner's Manual

Contents

- [1 REX CFS-100 Folding Camera Stand](#)
- [2 Precautions](#)
- [3 Overview](#)
- [4 Operating the CFS-100](#)
- [5 Specifications](#)
- [6 Documents / Resources](#)
 - [6.1 References](#)

REX CFS-100 Folding Camera Stand

Thank you for choosing Magnus.

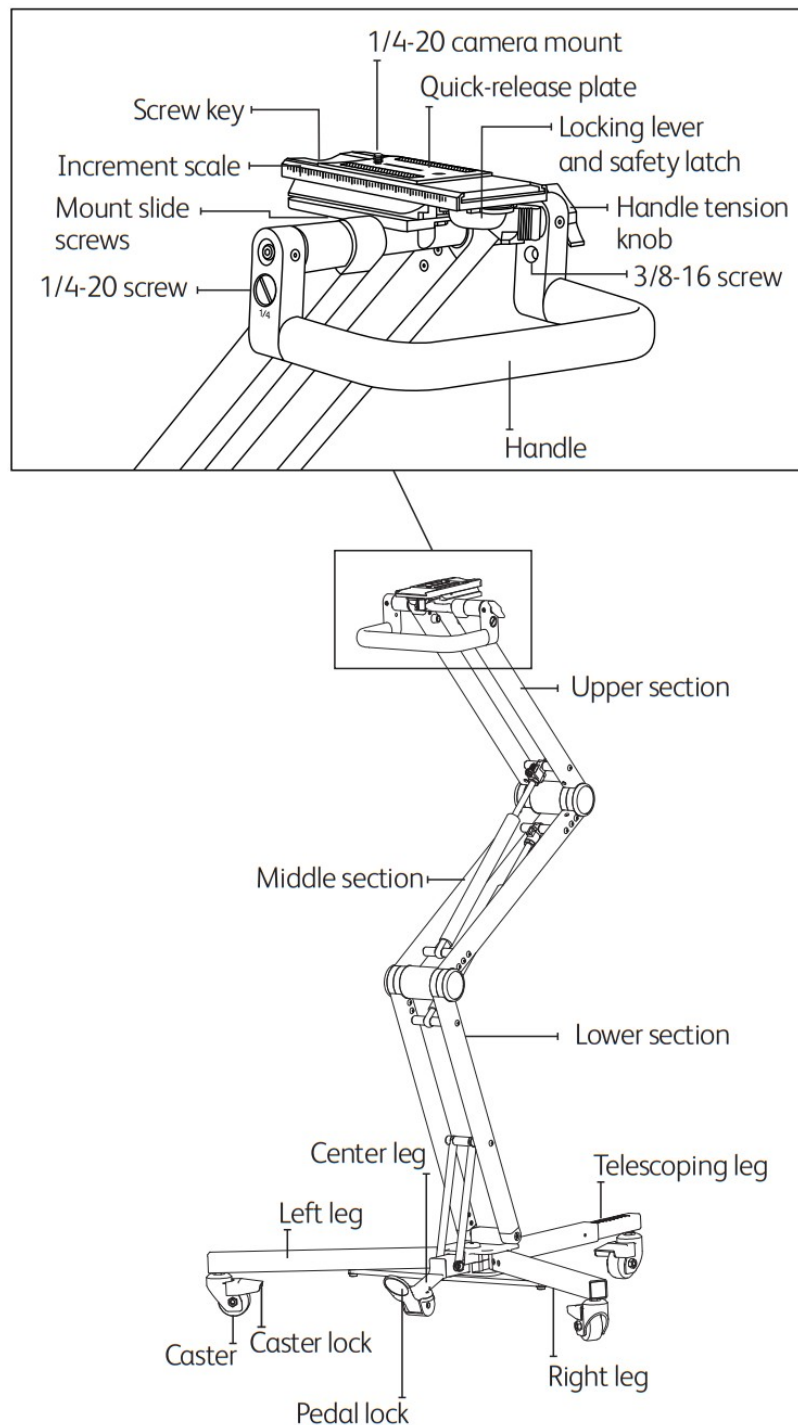
The Magnus REX Folding Camera Stand is designed with advanced features for professional photographers and videographers shooting vlogs or products in the studio or at home. It's constructed with high-grade aluminum tubing and offers a foot-pedal locking mechanism so you can quickly reposition your camera to any angle. Locking casters allow you to roll the stand around locations and lock them down for added stability. This collapsible support provides easy transport and storage, so you'll have creative flexibility wherever you shoot.

Precautions

- Please read and follow these instructions, and keep this manual in a safe place.
- Do not exceed the maximum weight capacity of the folding stand.
- The camera should be securely fastened to the quick-release mounting plate before mounting it onto the folding stand.
- Never mount a camera to the folding stand until all the legs are extended and secure.

- Do not stand on, rest on, or hang anything from the folding stand other than the device intended for use and mentioned in this manual.
- Do not lift or move the folding stand with an attached camera. Always use the provided handle.
- Do not step on the foot pedal without having a firm hold on the handle to avoid accidental damage to your camera.
- Make sure the front leg is extended if you position the folding stand with an attached camera over the front leg.
- Keep the center of gravity of the camera between the casters to avoid accidental damage to your camera.
- Keep hands and fingers clear of all moving parts to avoid pinching your fingers.
- Safe operation of the folding stand is the user's responsibility.
- All images are for illustrative purposes only.

Overview

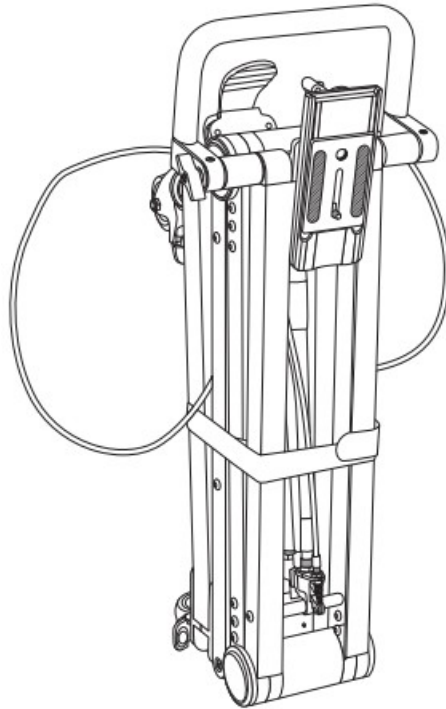


Also Includes:

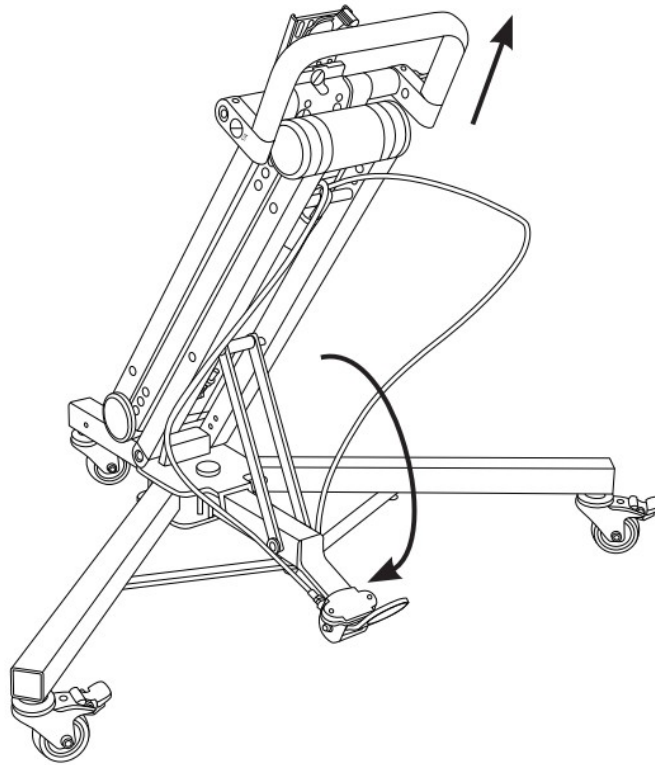
- Stand wrap
- Shoulder strap
- Padded carry case

Operating the CFS-100**Setting Up the Folding Stand**

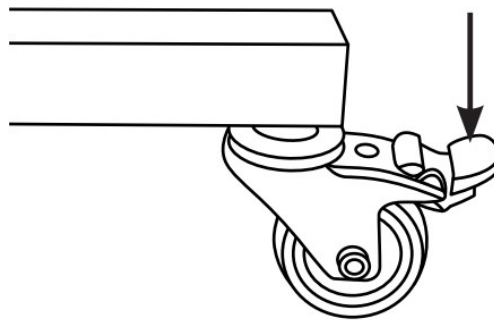
Grab the stand from the handle and remove it from the case.



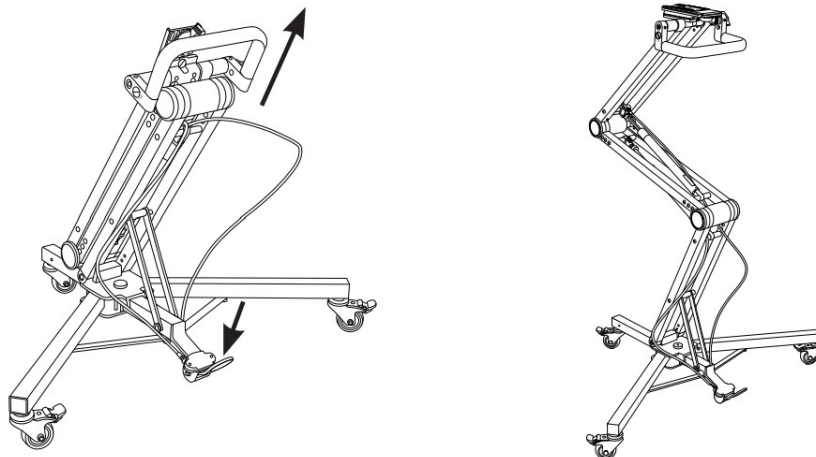
Unfasten the stand wrap. Make sure the stand's handle is straight as shown. Pull up on the stand handle, and down on the legs handle until all the legs are extended.



Press the caster locks to prevent the stand from moving.

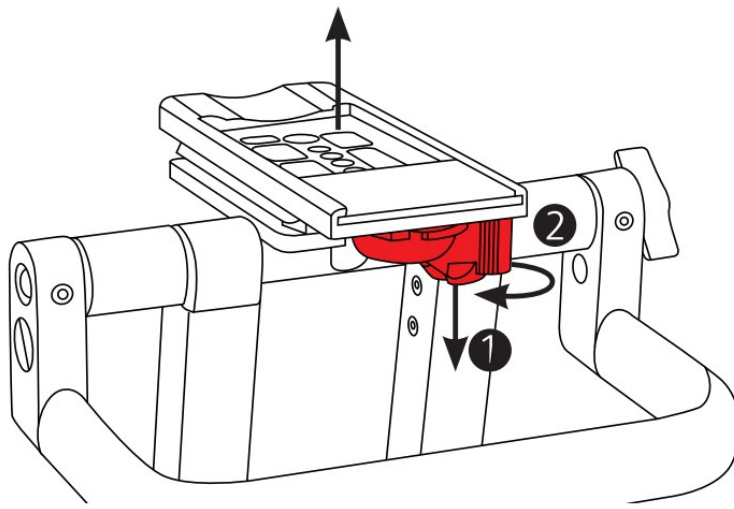


Warning! Make sure the handle is pointed up like in the image. Grip the handle with one hand and press the pedal with your foot to release the stand. Use the handle to pull the stand up to the desired angle and height, and release the pedal to lock the stand in place.

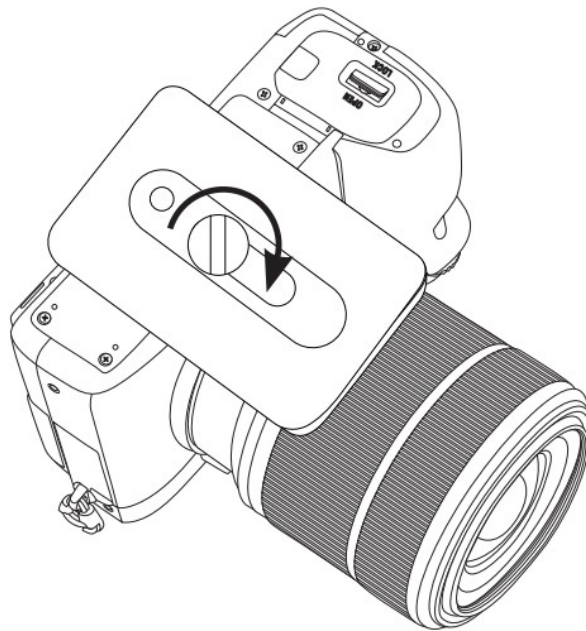


Attaching a Camera

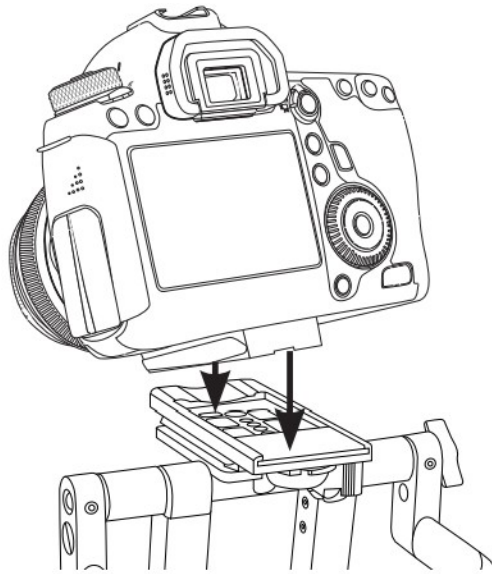
Remove the quick-release plate by pressing down on the safety latch ① and then sliding the locking lever to the left ② until the plate pops out from the mount.



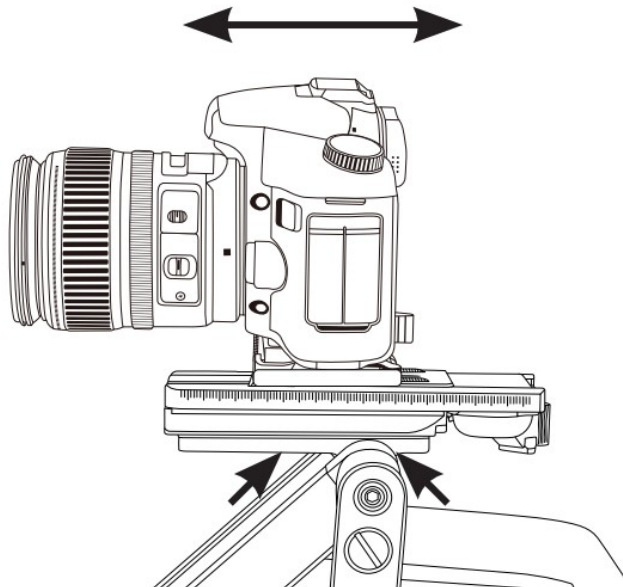
Attach the quick-release plate to the base of your camera with the 1/4-20 mounting screw, and tighten using the screw key. If your camera or other device uses a 3/8-16 socket, remove the 3/8-16 screw from the side of the handle. There is an additional 1/4-20 screw on the other side of the handle.



Attach the camera/quick-release assembly to the mount by seating the front end of the plate into the mount. Then press the rear side down until it locks into place.



To balance the camera, use a screwdriver to remove the mount slide screws and adjust the plate position. You can use the additional 1/4-20 and 3/8-16 screws from the sides of the handle if needed. Tighten the slide lock screw until secure.

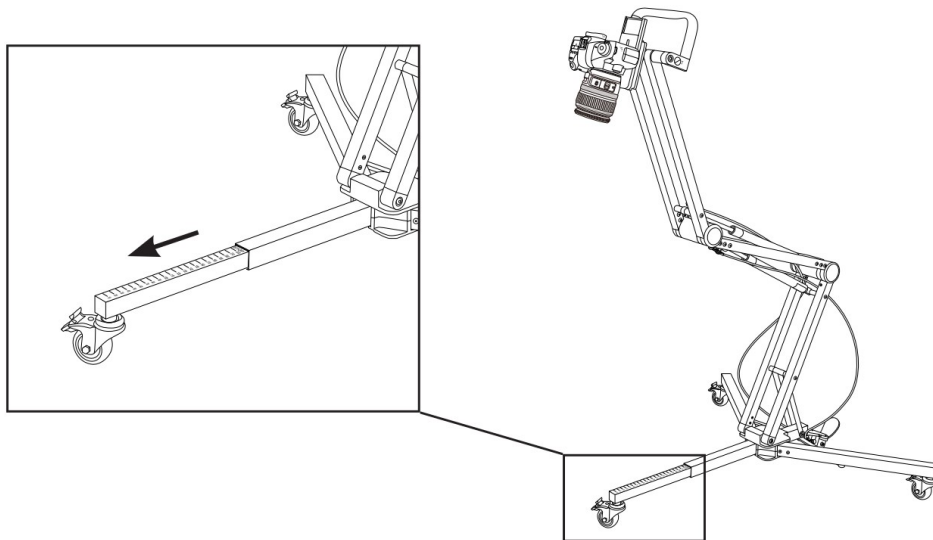


Extending the Telescopic Leg

When adjusting the height and angle of the stand and camera, keep the center of gravity between the casters. If your setup needs greater stability, like shooting top-down over a subject, use the telescoping leg. Pull on the caster of the telescoping leg and slowly extend the leg, until you see the stop mark.

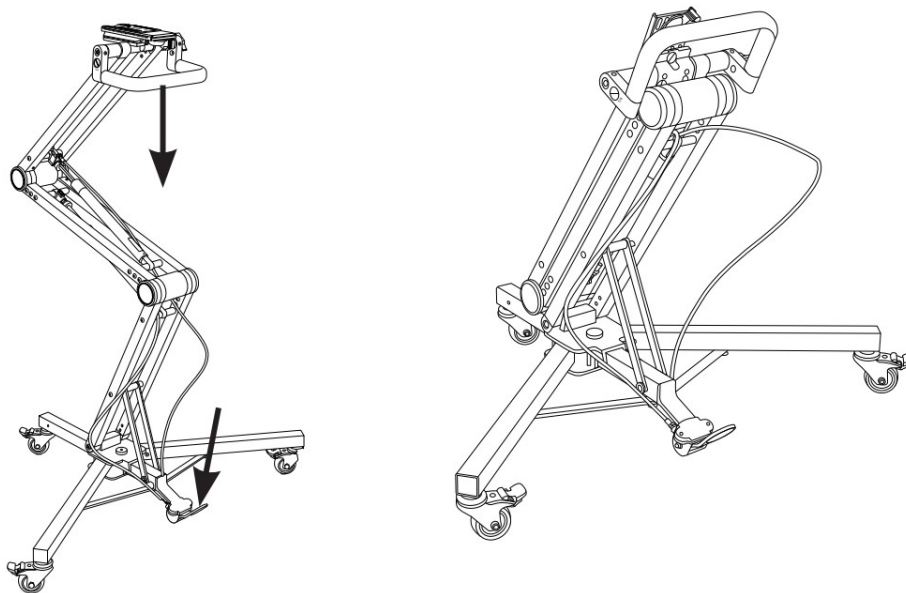
Caution!

Do not extend the telescoping leg beyond the stop mark.

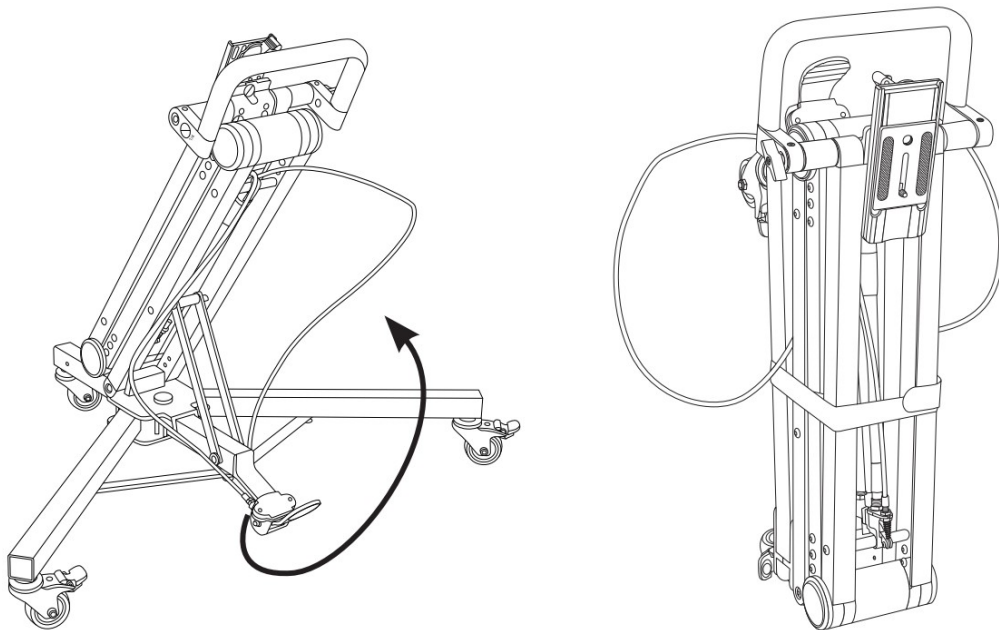


Folding the Stand

Straighten out the handle, and grip it with both hands. Press the pedal with your foot, and push down to collapse the stand. You may need to use one hand to help collapse the sectionals.



Retract the telescoping leg if extended. Grip the handle and pull up on the pedal to collapse the stand.



Specifications

Maximum height: 55 in. (139.7 cm)
Minimum height: 24 in. (61 cm)
Folded length: 23 in. (58.4 cm)
Materials: Anodized aluminum alloy
Quick-release plate: 0.24 × 2.2 × 3.3 in.
(0.6 × 5.5 × 8.3 cm)
Camera mounting screw: 1/4-20, 3/8-16
Built-in balance plate: Yes
Leg width: 31 in. (78.7 cm)
Front leg length: 10 in. (25.4 cm)
Telescoping leg length: 9 in. (22.9 cm)
Casters: 2 in. (5.1 cm)
Caster locks: Yes
Load capacity: 7.5 lb. (3.4 kg)
Weight: 16.5 lb. (7.5 kg)

One-Year Limited Warranty

This MAGNUS product is warranted to the original purchaser to be free from defects in materials and workmanship under normal consumer use for a period of one (1) years from the original purchase date or thirty (30) days after replacement, whichever occurs later. The warranty provider's responsibility with respect to this limited warranty shall be limited solely to repair or replacement, at the provider's discretion, of any product that fails during normal use of this product in its intended manner and in its intended environment. Inoperability of the product or part(s) shall be determined by the warranty provider. If the product has been discontinued, the warranty provider reserves the right to replace it with a model of equivalent quality and function.

This warranty does not cover damage or defect caused by misuse, neglect, accident, alteration, abuse, improper installation or maintenance. EXCEPT AS PROVIDED HEREIN, THE WARRANTY PROVIDER MAKES NEITHER ANY EXPRESS WARRANTIES NOR ANY IMPLIED WARRANTIES, INCLUDING BUT NOT LIMITED TO ANY IMPLIED WARRANTY OF MERCHANTABILITY OR FITNESS FOR A PARTICULAR PURPOSE. This warranty provides you with specific legal rights, and you may also have additional rights that vary from state to state.

To obtain warranty coverage, contact the Magnus Customer Service Department to obtain a return merchandise authorization ("RMA") number, and return the defective product to Magnus along with the RMA number and proof of purchase. Shipment of the defective product is at the purchaser's own risk and expense.

For more information or to arrange service, visit www.magnustripods.com or call Customer Service at [212-594-](tel:212-594-)



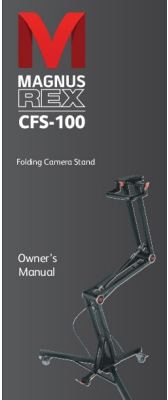
Product warranty provided by the Gradus Group.

www.gradusgroup.com

Magnus is a registered trademark of the Gradus Group.

© 2024 Gradus Group LLC. All rights reserved.

Documents / Resources

	<p>MAGNUS REX REX CFS-100 Folding Camera Stand [pdf] Owner's Manual REX CFS-100, REX CFS-100 Folding Camera Stand, Folding Camera Stand, Camera Stand, S tand</p>
---	---

References

- [G Gradus | Gradus Group](#)
- [M Magnus | Tripods & Tripod Accessories](#)
- [User Manual](#)

[Manuals+](#), [Privacy Policy](#)

This website is an independent publication and is neither affiliated with nor endorsed by any of the trademark owners. The "Bluetooth®" word mark and logos are registered trademarks owned by Bluetooth SIG, Inc. The "Wi-Fi®" word mark and logos are registered trademarks owned by the Wi-Fi Alliance. Any use of these marks on this website does not imply any affiliation with or endorsement.