



MAGMA CO10-101-M Crossover Series Marine Single Firebox Owner's Manual

[Home](#) » [MAGMA](#) » MAGMA CO10-101-M Crossover Series Marine Single Firebox Owner's Manual 

MAGMA[®]

OWNER'S MANUAL
CROSSOVER SERIES
MARINE SINGLE FIREBOX
CO10-101-M



ATTENTION: PLEASE READ THESE INSTRUCTIONS BEFORE INSTALLING OR OPERATING AND RETAIN FOR FUTURE REFERENCE

Contents

[1 IMPORTANT SAFETY INFORMATION](#)

[2 MAINTENANCE](#)

[3 PARTS & ASSEMBLY](#)

[4 INSTALLATION INSTRUCTIONS](#)

[5 OPERATING PROCEDURES](#)

[6 PRODUCT REGISTRATION](#)

[7 LIMITED WARRANTY](#)

[8 Documents / Resources](#)

[8.1 References](#)

[9 Related Posts](#)

IMPORTANT SAFETY INFORMATION

READ ALL INSTRUCTIONS BEFORE OPERATING

This instruction manual contains important information necessary for the proper assembly and safe use of the appliance.

Read and follow all warnings and instructions before assembling and using the appliance.

Follow all warnings and instructions when using the appliance.

Keep this manual for future reference.



WARNING

FIRE OR EXPLOSION HAZARD

If you smell gas

1. Do not attempt to light appliances.
2. Make sure the appliance is in the off position.
3. Extinguish any nearby flame(s).
4. Shut off the cylinder fuel supply valve if so equipped, or if equipped with a disposable fuel cylinder, disconnect the cylinder.
5. Leave the area immediately.
6. Allow gas to dissipate for 5 minutes.
7. If gas smell has dissipated from the area, of the appliance, and fuel supply, follow gas connection procedures.
8. If you smell gas again, follow steps 1-6 and have the appliance serviced.

FOR YOUR SAFETY

Do not store or use gasoline or other flammable vapors and liquids in the vicinity of this or any other appliance.



DANGER

CARBON MONOXIDE HAZARD

This appliance can produce carbon monoxide which is poisonous and has no odor. Using it in an enclosed space can kill you. Never use this appliance in an enclosed space such as a camper, tent, car, or home.



WARNING: Improper installation, use, adjustment, alteration, service, or maintenance can cause injury or property damage. Refer to this manual. For assistance or additional information consult a qualified installer, service agency or gas supplier.

IF YOU SMELL GAS

1. Disconnect gas to the appliance.
2. Extinguish any open flame.
3. If the odor continues, immediately leave the premises and call your gas supplier or local fire department.

FOR OUTDOOR USE ONLY

If stored indoors, detach hoses and leave fuel cylinder outdoors, with the valve closed and plugged.

FUEL TYPE

This unit is designed for use with propane only. No other fuel is approved for use with this unit. For Natural Gas application, contact Magma.

FUEL CYLINDER

Always store fuel bottles in a safe outdoor area with the valve closed and plugged. Follow the manufacturer's recommendation for proper use and storage of propane cylinders. Do Not Place Propane Cylinders Directly Under Any Part of the Burners.

COMBUSTIBLE MATERIALS

During the operation of the cooker, ensure proper clearance from any combustible materials, in relation to the top, sides, and back of the cooking appliance. For outside use only. Do not use near flammable walls or under eaves or overhangs of homes or garages. Never leave unattended while hot or in use. Allow cooker to cool before takedown and storage. The propane tank must always be stored outdoors in a well-ventilated space. Never Stand or Lean Over Cooker Burner While Lighting.

FOR YOUR SAFETY

Follow all safety, set-up, lighting, and cooking instructions. Do not store or use gasoline or other flammable vapors and liquids in the vicinity of this or any other appliance.

CARBON MONOXIDE HAZARD

This appliance can produce carbon monoxide which has no odor. Using it in an enclosed space can kill you. Never use this appliance in an enclosed space such as a camper, tent, car or home.

PROP 65

WARNING: This product can expose you to chemicals including Chromium (hexavalent compounds), which are known to the State of California to cause cancer and birth defects or other reproductive harm. For more information go to: www.p65Warnings.ca.gov

The installation must conform with local codes or, in the absence of local codes, with the Storage and Handling of Liquefied Petroleum Gases, ANSI/ NFPA 58; or Natural Gas and Propane Installation Code, CSA B149.1; Propane Storage and Handling, CSA B149.2

This appliance shall not be used in a building, garage, or any other enclosed area.

Clean and inspect the hose before each use of the appliance. If there is evidence of abrasion, wear, cuts, or leaks, the hose must be replaced prior to the appliance being put into operation. The replacement hose assembly shall

be specified by the manufacturer.

Keep the fuel supply hose away from any heated surface(s).

The appliance is not intended for commercial use.

The use of alcohol, prescription, or non-prescription drugs may impair the consumer's ability to properly assemble or safely operate the appliance.

In the event of rain, snow, hail, sleet, or other forms of precipitation while cooking with oil or grease, cover the cooking vessel immediately and turn off the appliance burners and gas supply. Do not attempt to move the appliance or cooking vessel.

Do not leave this appliance unattended while the appliance is in operation. Keep children and pets away from the appliance at all times.

Do not place an empty cooking vessel on the appliance while in operation. Use caution when placing anything in the cooking vessel while the appliance is in operation.

Do not move the appliance when in use. Allow the cooking vessel to cool to 115°F (45 °C) before moving or storing.

This appliance is not intended for and should never be used as a heater.

This appliance will be hot during and after use. Use insulated oven mitts or gloves for protection from hot surfaces or splatter from cooking liquids.

The appliance shall not be located or used under overhead unprotected combustible construction.

Propane can be safely stored outdoors in temperatures down to -50°F/-45°C.

A minimum 60" [152cm] clearance is required between the grilling surface and any overhead construction.

Avoid bumping or impact with the appliance to prevent spillage or splashing of the hot cooking liquid.

Never drop food or accessories into hot cooking liquid. Lower food and accessories slowly into the cooking liquid in order to prevent splashing or overflow. When removing food from the appliance, care shall be taken to avoid burns from hot cooking liquids.

The appliance must be a minimum of 24 inches from the side or back to any combustible material when operating the unit.

MAINTENANCE

Keeping appliance area clear and free from combustible materials, gasoline, and other flammable vapors and liquids.

Not obstructing the flow of combustion and ventilation air.

Keeping the ventilation opening(s) of the cylinder enclosure free and clear from debris.

Checking and cleaning burner/venturi tubes for insects and insect nests. A clogged tube can lead to a fire beneath the appliance.



Normal flame should be all blue and look like it's touching the burner at the bottom, with a minimal amount of yellow/orange.

Too much yellow/orange indicates that there is not enough primary oxygen, and the adjuster should be raised towards the high altitude position.

If the flame is blue and "roaring" with the base looking like it's raised off of the burner then you have too much primary oxygen. The adjuster should be moved towards sea level/lower altitude.

The LP gas supply cylinder to be used must be constructed and marked in accordance with the specifications for

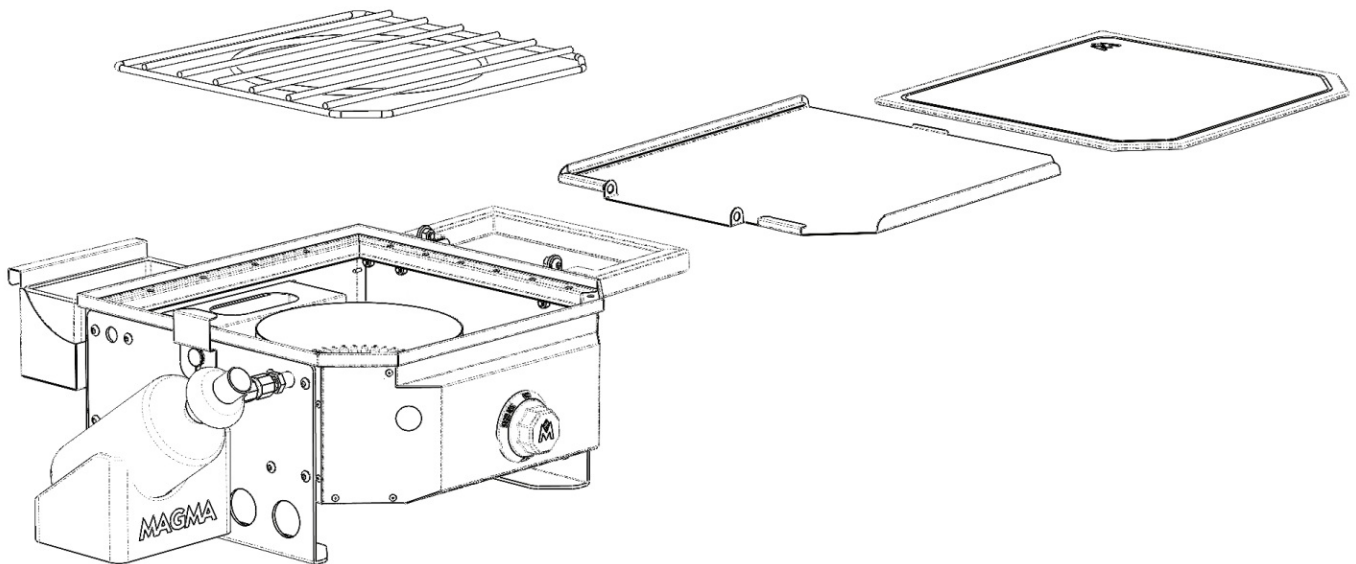
LP gas cylinders, U.S. Department of Transportation (DOT) or the Standard for Cylinders, Spheres, and Tubes for the Transportation of Dangerous Goods CAN/CSA-B339.

The pressure regulator and hose assembly supplied with the appliance must be used. Replacement pressure regulators and hose assemblies shall be those specified by the appliance manufacturer.

The cylinder supply system must be arranged for vapor withdrawal.

- 1) do not store a spare LP gas cylinder under or near this appliance;
- 2) never fill the cylinder beyond 80 percent full; and
- 3) if the instructions in (1) and (2) are not followed exactly, a fire causing death or serious injury may occur. Only cylinders marked with Propane shall be used.

PARTS & ASSEMBLY



Remove all packaging material from inside the fireboxes prior to igniting.

- Single Firebox
- Cutting board 10-769
- Cooking grate 10-771
- Disposable grease tray foil liner CO10-393

INSTALLATION INSTRUCTIONS

Valve/Hose Installation

1. Connect the regulator to the 1lb propane cylinder, screwing it clockwise.
2. Rotate the bottle down until it rests in the provided cradle.

Note: This unit is designed to use a 1lb cylinder



OPERATING PROCEDURES



DANGER

If you smell gas:

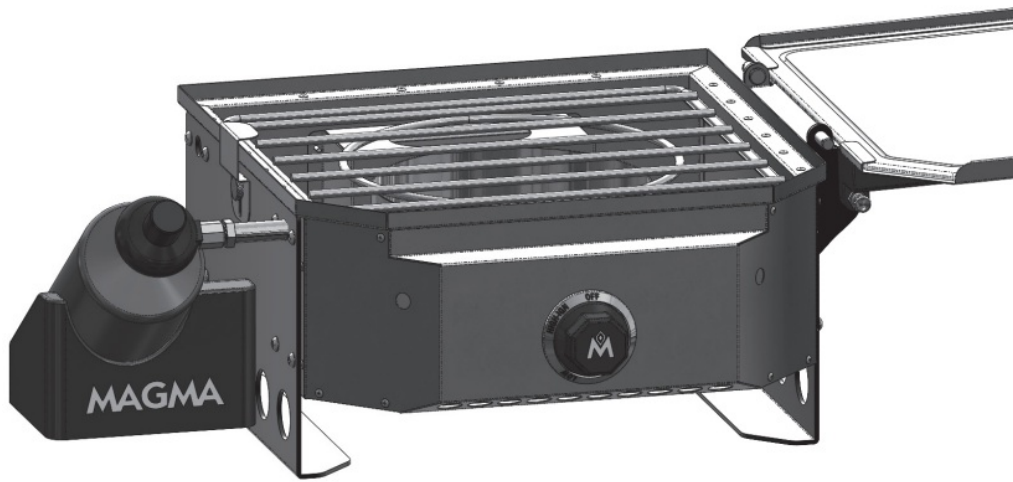
- Shut off gas to the appliance.
 - Extinguish any open flame.
 - Open lid.
 - If the odor continues, keep away from the appliance and immediately call your fire department.
- Failure to follow these instructions could result in fire or explosion which could cause property damage, personal injury or death.

Lighting Instructions

READ ALL INSTRUCTIONS BEFORE LIGHTING

1. Open lid during lighting
2. Push in the knob and turn to the left until the igniter engages and the spark hits the gas.
3. Release the knob and turn left until the flame reaches the desired level.
4. If ignition does not occur in 5 seconds, turn the burner control off, wait 5 minutes, and repeat the lighting procedure
5. Do not close the lid if the appliance is still hot

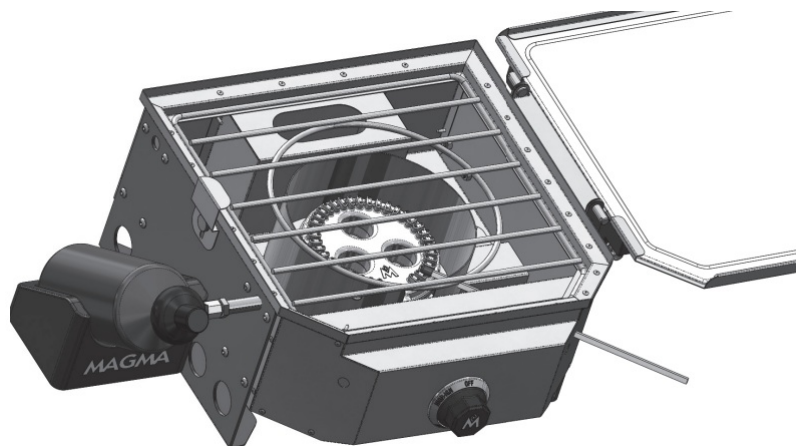
CAUTION: The gas pressure regulator provided with this appliance must be used. Replace only with regulator model: 10-775



Manual Lighting Instructions

1. Insert a long match or long lighter through the cooking grates of the firebox, until the flame is near the burner.
2. Push in the front knob and turn to the left until the gas is released and the burner lights.

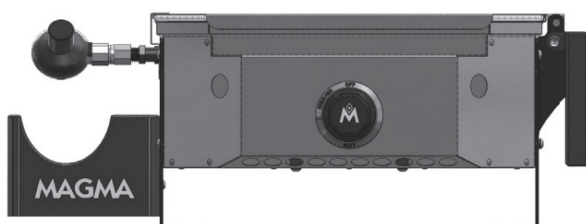
The appliance shall not be located or used under overhead unprotected combustible construction.



The unit must be a minimum of 24" from any combustible material from either the side or back when in use.

OPERATING PROCEDURES

Opening Handles for Table Support



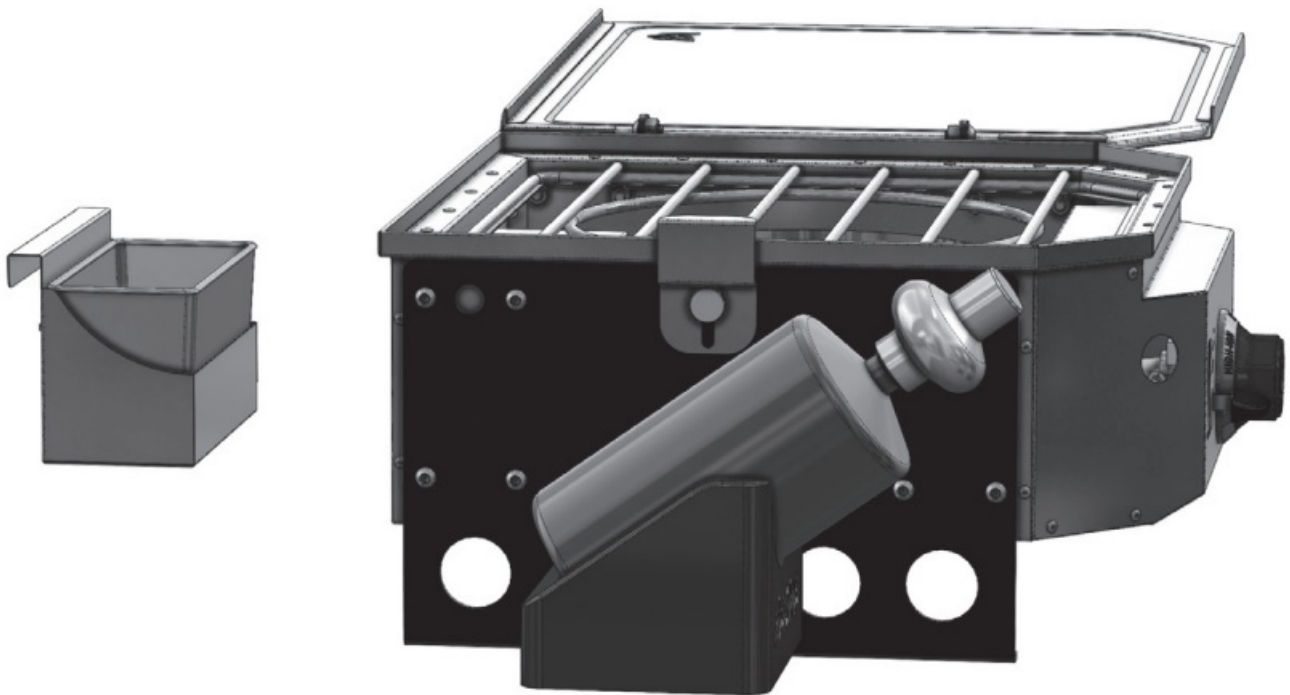
1. Pull handles up from the bottom until they lock into place.



2. Unclip and open covers/tables until they rest on the handles.
3. To close the handle, pull the pin under the handle to release and fold down.

Grease Container Removal

1. Press the lever to unlock on the grease container.
2. Pull out tray and remove disposable tray.



PRODUCT REGISTRATION

Register your product today for support.

Visit magmaproducts.com/pages/submit-your-product-registration or scan the QR code



<https://magmaproducts.com/pages/submit-your-product-registration>

LIMITED WARRANTY

Magma Products, LLC guarantees this product to be free from defects in materials or workmanship to the original consumer. This guarantee is for the periods herein specified when used under normal and reasonable conditions, one (1) year from the date of original purchase. This warranty does not include the cost of property damage or any inconvenience due to the failure of the product. Nor does it cover damage due to misuse, abuse, accident, or damage resulting from transportation of the product. Nor does it include damage resulting from the commercial use of this product. Nor does it include, on stainless steel products, "Surface Rust"; Excessive Corrosion due to exposure to salt water; or Discoloration or Corrosion caused by exposure to excessive heat or failure to properly clean and care for the stainless steel surfaces.

If the product fails to operate due to a defect in materials or workmanship during the warranty period, the defective part will be repaired or replaced at Magma's option. If you wish to obtain performance under this limited warranty, contact Magma's Customer Service Department via telephone at (562) 627- 0500, or via e-mail at mail@MagmaProducts.com, or via U.S. Postal Service mail at "Magma Products, LLC, Attention Customer Service, 3940 Pixie Ave. Lakewood, CA, 90712". The defective part, along with proof of purchase, must be returned postage prepaid to Magma Products, LLC. We suggest that you keep your purchase receipt as we may require reasonable proof of purchase.

In the state of California only, if refinishing or replacement of the product is not commercially practicable, the retailer selling the product, or Magma Products, LLC, will refund the purchase price paid for the product, less the amount directly attributable to use by the original consumer prior to the discovery of the nonconformity. In addition, in the state of California only, you may take the product to the retail establishment from which it was purchased or to any retail establishment selling this product in order to obtain performance under this warranty. All implied warranties, including the implied warranties of merchantability and fitness for a particular purpose, are limited in duration to the express warranty periods specified herein for the parts described herein. Some states do not allow limitations on how long an implied warranty lasts, so the above limitation may not apply to you. Neither Magma dealers, nor the retail establishment selling this product has any authority to make any warranties or to promise remedies in addition to or inconsistent with those stated above. Magma's maximum liability shall not exceed the purchase price of the product paid by the original consumer. Some states do not allow the exclusion or limitation of incidental or consequential damages, so the above limitation or exclusions may not apply to you. The warranty gives you specific legal rights and you may also have other rights which vary from state to state.



MAGMA and the Magma logo are registered trademarks of Magma Products, LLC

MAGMA®

Magma Products, LLC
3940 Pixie Avenue, Lakewood, CA 90712 USA
562-627-0500 | mail@magmaproducts.com
MagmaProducts.com

 <p>MAGMA OWNER'S MANUAL CROSSOVER SERIES MARINE SINGLE FIREBOX CO10-101-M</p> <p><small>ATTENTION: PLEASE READ THIS INSTRUCTIONS BEFORE INSTALLATION OF GRILL/GRILLS. For questions, please contact us at 1-800-854-2222 or visit us online at www.magmafire.com</small></p>	<p>MAGMA CO10-101-M Crossover Series Marine Single Firebox [pdf] Owner's Manual CO10-101-M Crossover Series Marine Single Firebox, CO10-101-M, Crossover Series Marine Single Firebox</p>
--	--

References

-  [Magma Products | Boat Grills, Camper Grills, & Accessories](#)
-  [Submit Your Product Registration – Magma](#)
-  [ucts.com](#)
-  [p65Warnings.ca.gov](#)