


MAGLITE ML25LT LED 2-CELL C FLASHLIGHT



Maglite ML25LT LED 2-Cell C Flashlight Instruction Manual

[Home](#) » [Support](#) » Maglite ML25LT LED 2-Cell C Flashlight Instruction Manual 

Contents

- 1 [Maglite ML25LT LED 2-Cell C Flashlight](#)
- 2 [PRODUCT PARTS](#)
- 3 [OPERATION](#)
- 4 [INSPECTION AND MAINTENANCE](#)
- 5 [TROUBLESHOOTING](#)
- 6 [WARRANTY](#)
- 7 [FREQUENTLY ASKED QUESTIONS](#)
- 8 [References](#)

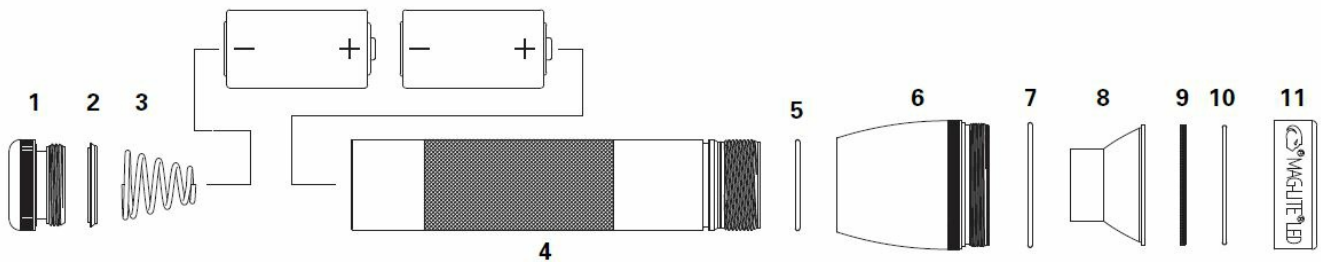


Maglite ML25LT LED 2-Cell C Flashlight



PRODUCT PARTS

1. Tail cap
2. Lip seal, tail cap
3. Battery spring*
4. Barrel
5. O-ring, barrel
6. Head
7. O-ring, head
8. Reflector
9. Clear lens
10. O-ring, face cap
11. Face cap



Please register your flashlight online at www.maglite.com/support/register. (Registration is not required for warranty service.)

OPERATION

- The large end of the battery spring must be snapped into the tail cap.
- Install batteries with the “+” end facing the head end of the flashlight.
- Backward installation can damage the LED.
- This flashlight is designed to run on non-rechargeable alkaline batteries from reputable manufacturers.
- Standard (carbon-zinc) or rechargeable NiMH batteries may be used but could reduce run times.
- Rechargeable alkaline batteries and lithium batteries should not be used.
- Turn the flashlight on (by twisting the head) and you have Full (100%) Power Mode.
- Quickly turn the flashlight off and on again to access Power-Conserving (15% Power) Mode.
- Rotate the head to focus the beam. Candle Mode – unscrew the head to detach.
- Invert the head and place the tail end of the flashlight into the inverted head.
- The flashlight will act as a candle.

INSPECTION AND MAINTENANCE

- If the flashlight is used less than once a month, remove the batteries between uses.
- Lubricate all threads and rubber O-rings with petroleum jelly twice yearly.
- Inspect the flashlight monthly carefully remove any damaged batteries and clean any corrosion.

TROUBLESHOOTING

If the flashlight does not turn on or stay on –

Replace the batteries.

- If the problem persists, then

Check the tail cap.

- The metal surfaces contacting the barrel, tail cap, and spring assembly should be clean, shiny, and free of corrosion or other obstructions.

Clean as needed.

- If the flashlight still does not operate properly, see the tips at www.maglite.com/support/overview. If this does not resolve the problem, see the “How and When to Make a Warranty Claim” section below.

WARNINGS

- TO AVOID THE RISK OF EYE INJURY, LOOK AWAY IMMEDIATELY IF THE BEAM IS SHONE DIRECTLY INTO YOUR EYES.
- AVOID EXPOSING BATTERIES TO FIRE OR EXCESSIVE HEAT as this may cause leakage or explosion.
- TO AVOID THE RISK OF INJURY TO EYES OR SKIN, AVOID CONTACT WITH ANY MATERIAL LEAKED FROM A BATTERY.
- To REDUCE RISK OF PERSONAL INJURY or harm to your flashlight, never mix old with new batteries, nor mix alkaline with standard or rechargeable batteries. When batteries are depleted, replace the whole set at the same time with fresh batteries of the same brand and type.
- THIS FLASHLIGHT IS NOT A TOY; not recommended for use by children.

WARRANTY

TEN-YEAR LIMITED WARRANTY

- Mag Instrument, Inc. warrants to the original owner that this flashlight is free from defects in parts and workmanship for ten years from the date of the first retail purchase.
- Mag or an authorized Mag Warranty Service Center will, free of charge, repair or, at its option, replace a defective flashlight or component. (Mag does not warrant the future availability of particular colors or decorations, and may replace a custom flashlight with a standard flashlight.)
- This warranty is in lieu of all other warranties, express or implied.

EXCLUSIONS:

This warranty does not cover:

- Dead batteries, battery leakage or explosion;
- LED failure; or

- Product damage due to alteration, misuse, battery leakage, or lack of maintenance.

MAG DISCLAIMS ANY RESPONSIBILITY FOR INCIDENTAL OR CONSEQUENTIAL DAMAGES.

Some countries, provinces, and states do not allow the exclusion or limitation of implied warranties, incidental or consequential damages, and/or limitations on transferability, so the above limitations and exclusions may not apply to you.

HOW AND WHEN TO MAKE A WARRANTY CLAIM:

- In case of dead batteries, replace batteries; do not send batteries or flashlights to Mag.
- If the flashlight is damaged by battery leakage, determine what brand of battery caused the damage and follow the battery manufacturer's instructions regarding damage claims; do not send batteries or flashlights to Mag.
- For warranty returns: Send the flashlight (postage or shipping prepaid) to the nearest authorized Mag Warranty Service Center (find at maglite.com/support/service_center or ask your local Mag retailer).

This warranty gives you specific legal rights, and you may have other rights which vary from one jurisdiction to another. Where any term of this warranty is prohibited by the law of any jurisdiction, such term shall there be null and void, but the remainder of this warranty shall remain in full force and effect.

THESE STATEMENTS DO NOT AFFECT THE STATUTORY RIGHTS OF A CONSUMER.

CORPORATE OFFICE MAG INSTRUMENT, INC.

2001 S. Hellman Ave. • P.O. Box 50600 Ontario, California U.S.A. 91761-1083

- **Website:** www.maglite.com
- **Tel:** 01 (909) 947-1006
- **Fax:** 01 (909) 947-5041
- **E-mail:** warranty@magmail.com
- **Sales & Parts:** Tel: 01 (909) 947-1006
- **E-mail:** salesdesk@magmail.com

©2018 MAG INSTRUMENT, INC.

Flashlight designed and manufactured in the U.S.A. Mag Instrument's factory is located in Ontario, California. Includes some imported components.

The distinctive shapes, styles, and overall appearances of all Mag® flashlights, and the circumferential inscription on the heads of all Mag® flashlights, are trademarks of Mag Instrument. The circumferential inscription on the head of a flashlight signifies that it is an original Mag® flashlight and part of the Mag® family of flashlights. U.S. Trademark Registrations for the circumferential inscription and the shape, style, and overall appearance of Mag® flashlights include Reg. Nos. 1,808,998, 2,074,795, 2,687,693, 2,745,460, 2,765,978 and 2,765,979. The ornamental patterns of knurling on Maglite® flashlights are trademarks of Mag Instrument (see U.S. Trademark Reg. No. 3,839,734).

FREQUENTLY ASKED QUESTIONS

What brand manufactures the ML25LT LED 2-Cell C Flashlight?

The ML25LT LED 2-Cell C Flashlight is manufactured by MagLite.

What is the brightness level of the Maglite ML25LT LED 2-Cell C Flashlight?

The brightness level of the Maglite ML25LT LED 2-Cell C Flashlight is 177 lumens.

What is the battery description for the Maglite ML25LT LED 2-Cell C Flashlight?

The Maglite ML25LT LED 2-Cell C Flashlight uses C Cell Alkaline batteries.

What are the product dimensions of the Maglite ML25LT LED 2-Cell C Flashlight?

The product dimensions of the Maglite ML25LT LED 2-Cell C Flashlight are 2 x 5 x 8.88 inches.

What is the item model number of the Maglite ML25LT LED 2-Cell C Flashlight?

The item model number of the Maglite ML25LT LED 2-Cell C Flashlight is ML25LT.

How many batteries are required for the Maglite ML25LT LED 2-Cell C Flashlight?

The Maglite ML25LT LED 2-Cell C Flashlight requires 2 C batteries.

What is the price of the Maglite ML25LT LED 2-Cell C Flashlight?

The price of the Maglite ML25LT LED 2-Cell C Flashlight is \$21.11.

What is the power source for the Maglite ML25LT LED 2-Cell C Flashlight?

The power source for the Maglite ML25LT LED 2-Cell C Flashlight is battery-powered.

What type of light source does the Maglite ML25LT LED 2-Cell C Flashlight use?

The Maglite ML25LT LED 2-Cell C Flashlight utilizes LED as its light source type.

What is the light path distance of the Maglite ML25LT LED 2-Cell C Flashlight?

The light path distance of the Maglite ML25LT LED 2-Cell C Flashlight is 300 yards.

What is the battery cell composition used in the Maglite ML25LT LED 2-Cell C Flashlight?

The battery cell composition used in the Maglite ML25LT LED 2-Cell C Flashlight is Alkaline.

Who is the manufacturer of the Maglite ML25LT LED 2-Cell C Flashlight?

The manufacturer of the Maglite ML25LT LED 2-Cell C Flashlight is MagLite.

What is the item weight of the Maglite ML25LT LED 2-Cell C Flashlight?

The item weight of the Maglite ML25LT LED 2-Cell C Flashlight is 7.2 ounces.

What should I do if my Maglite ML25LT LED 2-Cell C Flashlight doesn't turn on?

First, ensure that the batteries are inserted correctly according to the polarity markings. If the batteries are correctly inserted and the flashlight still doesn't turn on, try replacing the batteries with new ones.

Why is the brightness of my Maglite ML25LT LED 2-Cell C Flashlight dimmer than usual?

Diminished brightness can be caused by low battery power. Try replacing the batteries with fresh ones. If the issue persists, check for any dirt or debris obstructing the lens or LED, as this can also affect brightness.

DOWNLOAD THE PDF LINK: [Maglite ML25LT LED 2-Cell C Flashlight Instruction Manual](#)

REFERENCES

[Maglite ML25LT LED 2-Cell C Flashlight Instruction Manual-wiki](#)

[Maglite ML25LT LED 2-Cell C Flashlight Instruction Manual-Device.Report](#)

References

- [User Manual](#)

[Manuals+](#), [Privacy Policy](#)

This website is an independent publication and is neither affiliated with nor endorsed by any of the trademark owners. The "Bluetooth®" word mark and logos are registered trademarks owned by Bluetooth SIG, Inc. The "Wi-Fi®" word mark and logos are registered trademarks owned by the Wi-Fi Alliance. Any use of these marks on this website does not imply any affiliation with or endorsement.