



# MAGICSHINE MONTEER 8000S V2.0 Remote MTB Light User Manual

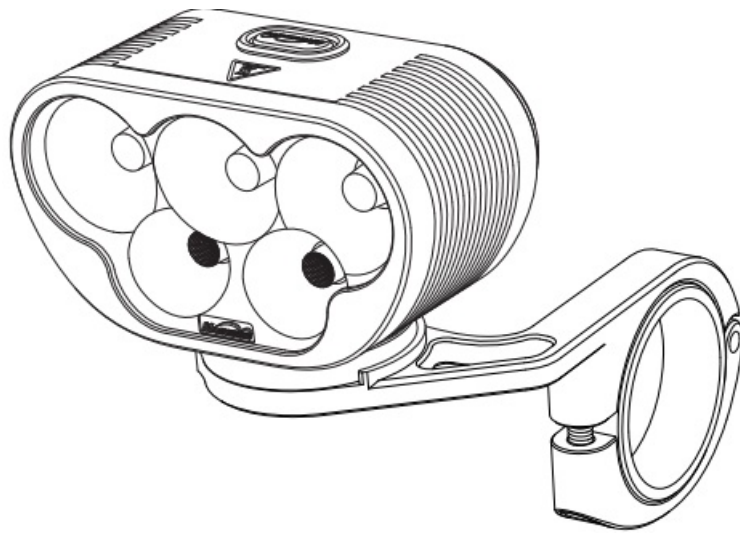
[Home](#) » [MAGICSHINE](#) » MAGICSHINE MONTEER 8000S V2.0 Remote MTB Light User Manual 

## Contents

- [1 MAGICSHINE MONTEER 8000S V2.0 Remote MTB Light](#)
- [2 Product Information](#)
- [3 Product Usage Instructions](#)
- [4 ACCESSORY/STRUCTURE](#)
- [5 HOW TO INSTALL](#)
- [6 HOW TO INSTALL BATTERY PACK](#)
- [7 HOW TO PAIR](#)
- [8 HOW TO USE THE M-REMOTE](#)
- [9 OPTIONAL PARTS](#)
- [10 BATTERY FEATURES](#)
- [11 BATTERY INDICATOR](#)
- [12 HOW TO RECHARGE](#)
- [13 SWITCHING THE LIGHTING MODE](#)
- [14 LUMENS/RUN TIME](#)
- [15 WARRANTY](#)
- [16 Documents / Resources](#)



**MAGICSHINE MONTEER 8000S V2.0 Remote MTB Light**



## Product Information

The MONTEER 8000S V2.0 is a high-performance lighting system designed for outdoor use. It features a high capacity battery pack with four 21700 Li-ion battery cells, providing a voltage of 7.2V and a capacity of 10 Ah. The battery pack is equipped with multiple circuit protections to ensure safe use. The shell of the battery pack is made of high-quality fireproof PC material for added durability. The MONTEER 8000S V2.0 also comes with an M-REMOTE for convenient control, a handlebar mount for easy installation, and various accessories including a USB-C cable and a nylon strap.

## Battery Indicator

The MONTEER 8000S V2.0 features a battery indicator that allows you to check the remaining power. When the light is off, simply press the power button to display the remaining power. The battery indicator uses different colors to indicate different power levels:

- Flash Red (0%-10% power remaining)
- Red (11%-30% power remaining)
- Green (31%-100% power remaining)

## Lumens/Run Time

The MONTEER 8000S V2.0 offers different lighting modes with corresponding brightness levels and run times:

Mode	Brightness	Run Time
ECO	400 lumens	32 hours
LOW	900 lumens	22 hours
MID	1700 lumens	12 hours
HIGH	3200 lumens	9 hours
FLASH	3200 lumens (0-900 lumens)	16 hours (0-4 hours)

## Product Usage Instructions

### How to Install

1. Attach the handlebar mount to your bicycle using a 3mm hex key.
2. Place the MONTEER 8000S V2.0 onto the handlebar mount and secure it in place.
3. Connect the battery pack to the lighting system.
4. Use the provided nylon strap to further secure the battery pack to your bicycle if needed.

## **How to Recharge**

To recharge the battery pack, follow these steps:

1. Connect the USB-C cable to the charging port of the battery pack.
2. Connect the other end of the USB-C cable to a power source, such as a wall adapter or a computer.
3. The battery indicator will show the current charging status:
  - 30% – Flashing red
  - 70% – Red
  - 100% – Green
4. The standard charging time is approximately 9.5 hours when using a 5V 2A power source.
5. Once fully charged, disconnect the USB-C cable from the battery pack.

## **Switching the Lighting Mode**

To switch between different lighting modes, use the power button on the MONTEER 8000S V2.0:

- Long press the power button to turn the light on or off. The light will remember the last lighting mode used (mode memory function).
- Single press the power button to cycle through the available lighting modes.
- Double press the power button to activate the flash mode.

## **How to Pair**

If you are using the M-REMOTE, follow these steps to pair it with the lighting system:

1. Disconnect the lighthouse from the battery pack.
2. Press and hold both buttons on the M-REMOTE simultaneously until the indicator light flashes.
3. Reconnect the lighthouse to the battery pack.
4. If pairing is successful, the lighthouse will flash once or the indicator light on the M-REMOTE will stop flashing.

Note: The M-REMOTE can only be paired with one device at a time. To pair a new device, repeat the above steps.

## **How to Use the M-REMOTE**

The M-REMOTE provides convenient control over the lighting system. Follow these instructions:

- Mode selection button:
  - Press and hold to turn the light on or off.

- Press to activate the maximum output mode.
- Double press to change the lighting mode.
- Brightness selection button:
  - Press and hold to turn the light on or off.
  - Press to change the brightness level.
  - Double press to activate the flash mode.

## Optional Parts

There are optional parts available for the MONTEER 8000S V2.0 lighting system. Please refer to the product documentation or contact Magicshine for more information.

## Warranty

The Magicshine lighting system is covered by a 24-month warranty from the date of purchase. Registering the lighting system on the Magicshine website extends the warranty by an additional 6 months.

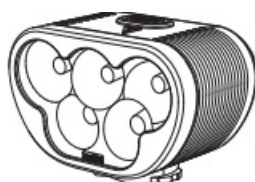
The battery packs and AC adapters have a 6-month warranty. The warranty covers defects in material and workmanship, provided that there is no tampering or intentional damage. Proof of purchase is required for any warranty claims. For complaints or warranty claims, please contact the specialist retailer or Magicshine directly.

Contact information for Magicshine:

- Tel: (+86) 755-295 536 69
- Fax: (+86) 755-275 897 77
- E-mail: [support@magicshine.com](mailto:support@magicshine.com) (order from Magicshine.com online store), [service@magicshine.com](mailto:service@magicshine.com) (order from other sales channels)

In case of a justified warranty claim, a replacement device will be provided based on availability. The manufacturer reserves the right to make technical modifications.

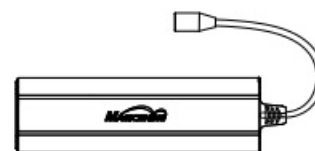
## ACCESSORY/STRUCTURE



MONTEER 8000S V2.0



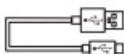
M-REMOTE



Battery pack



Handlebar mount



USB-C Cable

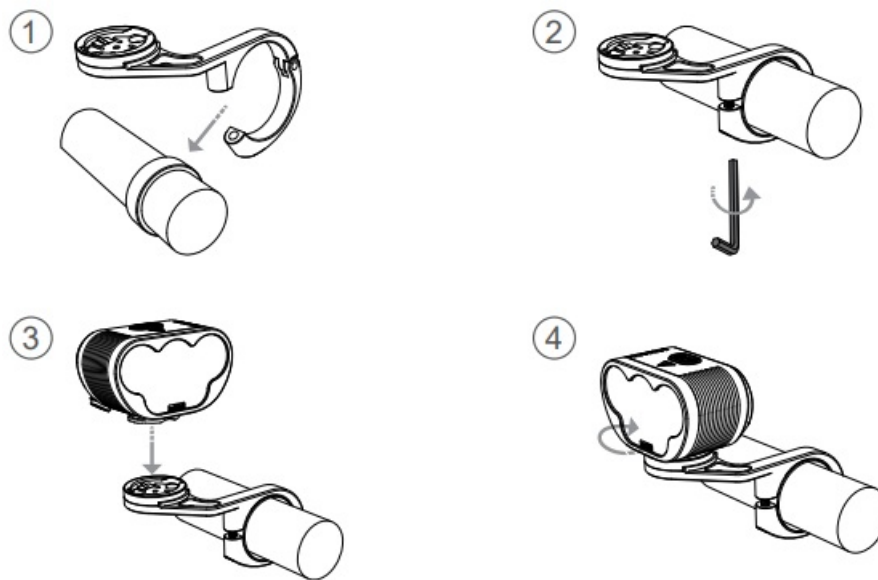


Nylon strap

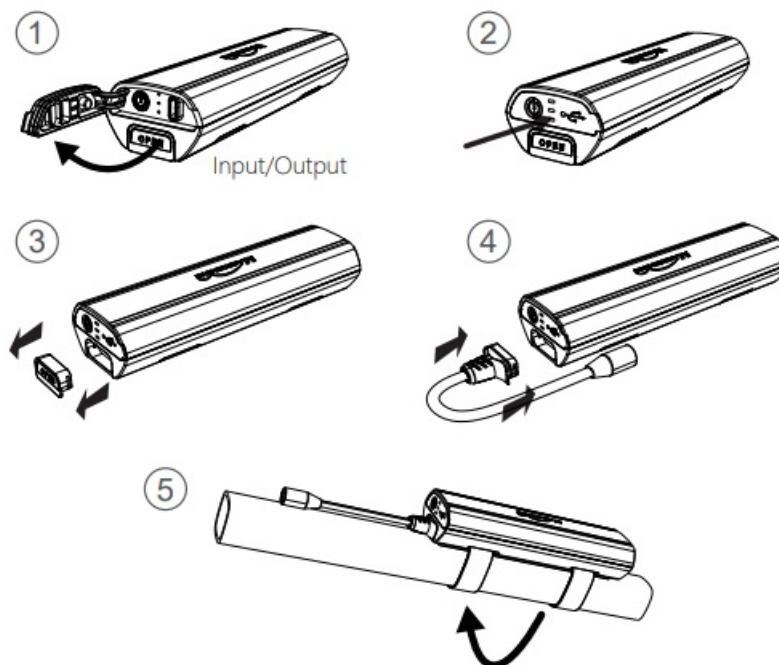


3mm Hex

## HOW TO INSTALL



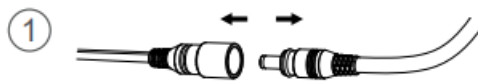
## HOW TO INSTALL BATTERY PACK



## HOW TO PAIR

1. Disconnect the lighthead from the battery
2. Press the two buttons at the same time until the indicator light flashes
3. Reconnect the lighthead to the battery
4. Pairing is successful: the lighthead flashes once or the indicator light stops flashing

\*The M-REMOTE can only be paired with one device. To pair a new device, please repeat the operation steps above.



Disconnect the lighthead from the battery



Press the two buttons at the same time until the indicator light flashes



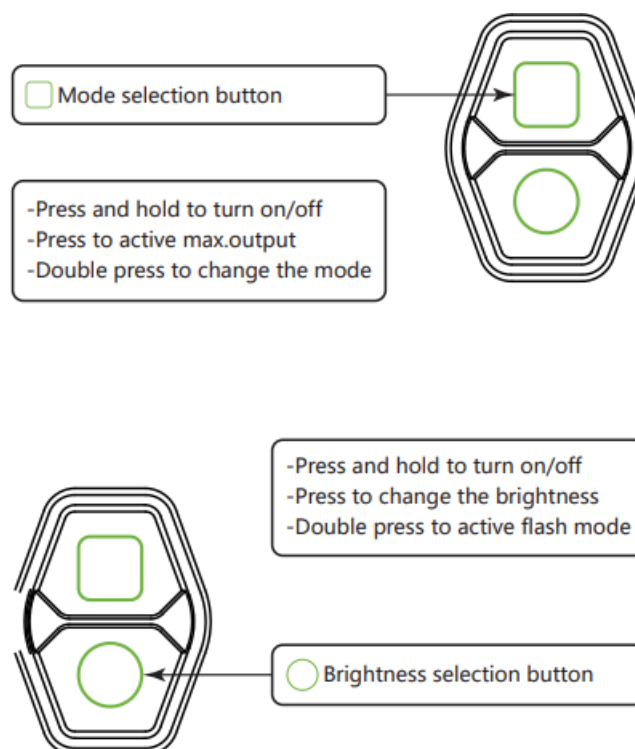
Reconnect the lighthead to the battery



Pairing is successful: the lighthead flashes once or the indicator light stops flashing

The M-REMOTE can only be paired with one device. To pair a new device, please repeat the operation steps above.

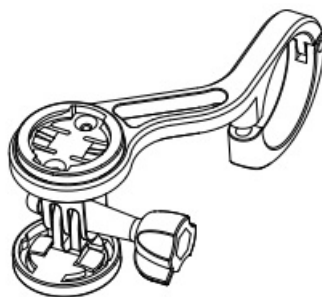
## HOW TO USE THE M-REMOTE



## OPTIONAL PARTS



Helmet mount

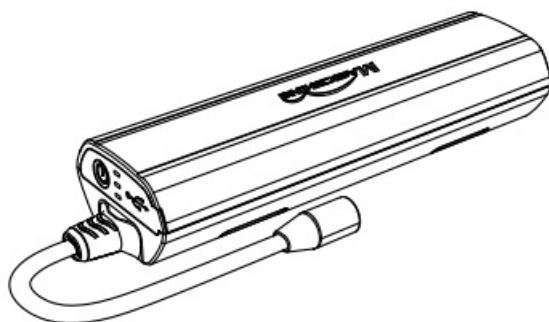


TTA front mount

\*Adaptable accessories (sold separately)

## BATTERY FEATURES

- High capacity battery pack with 4\*21700 Li-ion battery cells 7.2V 10 Ah.
- Multiple circuit protections for safety use.
- High quality fireproof PC material for shell.
- Type-C charging & discharging integrated interface for 10w/18w fast output.



## BATTERY INDICATOR

When the light is off, press the power button to display the remaining power.



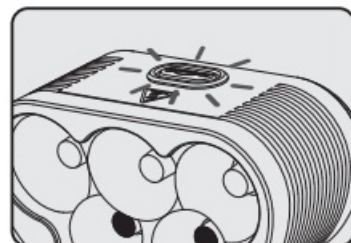
**FLASH RED**  
**0%-10%**



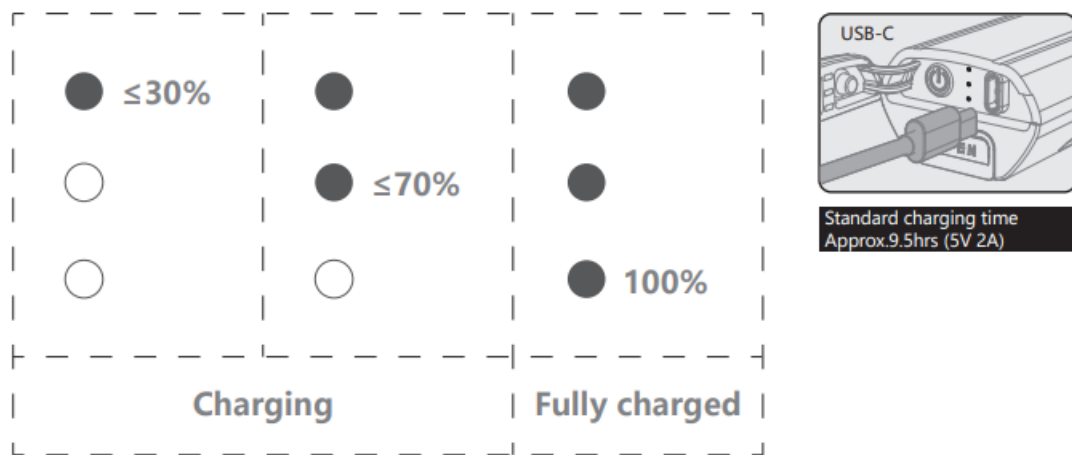
**RED**  
**11%-30%**



**GREEN**  
**31%-100%**



## HOW TO RECHARGE

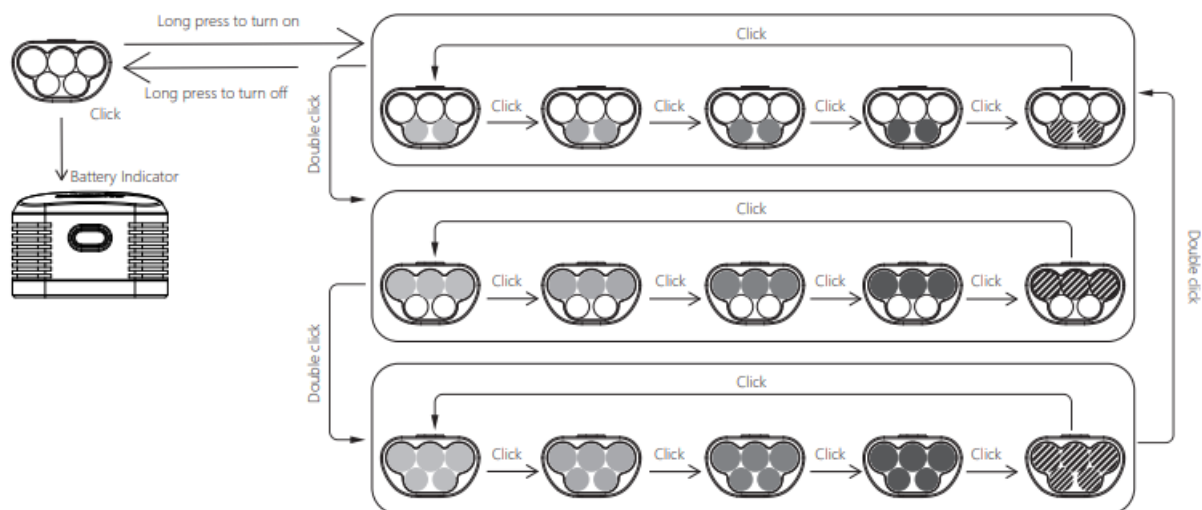


## SWITCHING THE LIGHTING MODE

Long press power button to turn on/off

When you turn the light on, it lights up in the last lighting mode you used.

(Mode memory function)



## LUMENS/RUN TIME

MODE	BRIGHTNESS	ECO	LOW	MID	HIGH	FLASH
	LUMENS	400	900	1700	3200	0-900
	h:min	32:00	15:00	09:00	04:00	16:00
	LUMENS	600	1400	2600	4800	0-1400
	h:min	22:00	11:00	05:30	02:10	11:30
	LUMENS	1000	2400	4400	8000	0-2400
	h:min	12:00	06:30	03:25	01:30	07:00



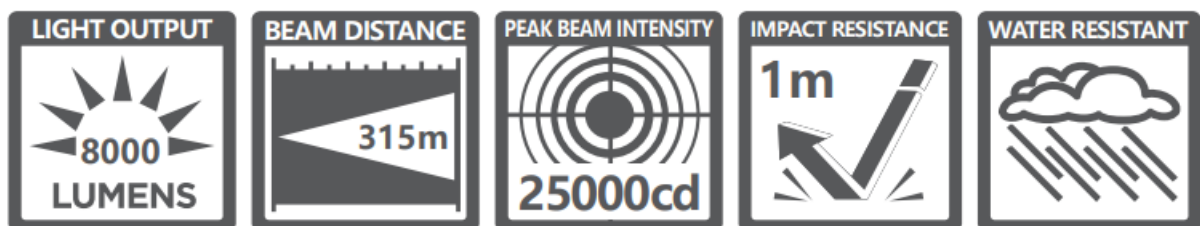
## WARNING



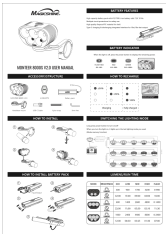
## WARRANTY

- The Magicshine lighting system is warrantied for 24 months from the date of purchase.
- If you register the lighting system on the Magicshine website you will receive a bonus 6 month warranty.
- Battery packs and AC adapters have a 6 month warranty, however, there is no bonus warranty available.
- The warranty is limited to defects in material and workmanship on the lighting system itself, the battery pack and the AC adapter.
- The warranty is only valid if the affected parts have not been tampered with and there is no intentional damage. Please keep your proof of purchase in a safe place. Proof of purchase must be presented in the event of any claim. Please contact the specialist retailer from whom you purchased the device for complaint or warranty claim.
- Alternatively, you can send your complaint or claim directly to Magicshine at  
Tel: (+86) 755-295 536 69 Fax: (+86)755-275 897 77
- E-mail: [support@magicshine.com](mailto:support@magicshine.com) (order from [Magicshine.comonline](http://Magicshine.comonline) store)  
[service@magicshine.com](mailto:service@magicshine.com) (order from other sales channels)
- In the event of a justified warranty claim and delivery of a replacement device, you will only be entitled to a model available when replacing. The manufacturer retains the right to make technical modifications.

## ANSI FL 1 STANDARD



## Documents / Resources



[MAGICSHINE MONTEER 8000S V2.0 Remote MTB Light](#) [pdf] User Manual  
MONTEER 8000S V2.0 Remote MTB Light, 8000S V2.0 Remote MTB Light, V2.0 Remote MTB Light, Remote MTB Light, MTB Light, Light