

MAGICO S5 Mk.II Loudspeaker



# MAGICO S5 Mk.II Loudspeaker User Guide

[Home](#) » [MAGICO](#) » MAGICO S5 Mk.II Loudspeaker User Guide 

## Contents

- [1 MAGICO S5 Mk.II Loudspeaker](#)
- [2 MAGICO S5 UNPACKING INSTRUCTIONS](#)
- [3 SPECIFICATIONS](#)
- [4 LIMITED WARRANTY](#)
- [5 DISCLAIMER](#)
- [6 Documents / Resources](#)
  - [6.1 References](#)
- [7 Related Posts](#)

# MAGICO

MAGICO S5 Mk.II Loudspeaker



### **A MESSAGE FROM ALON WOLF**

THANK YOU FOR PURCHASING THE MAGICO S5 LOUDSPEAKERS. THE S5 INCORPORATES ALL WE HAVE LEARNED IN THE PAST 22 YEARS ABOUT LOUDSPEAKER DESIGN AND MANUFACTURING. LIKE ALL MAGICO LOUDSPEAKERS, THE S5 IS A PRECISION INSTRUMENT FOR MUSIC REPRODUCTION. PROPERLY SET UP AND MAINTAINED, IT WILL PROVIDE YOU WITH A GREAT MUSICAL EXPERIENCE FOR MANY YEARS. IF YOU HAVE ANY QUESTIONS, PLEASE CONTACT YOUR AUTHORIZED MAGICO DEALER. MAGICO MAINTAINS A NETWORK OF DEDICATED DISTRIBUTORS WHO WILL BE ABLE TO HELP YOU, SHOULD YOU HAVE ANY PROBLEMS YOUR DEALER CANNOT RESOLVE. FOR THE LATEST INFORMATION ON ALL MAGICO PRODUCTS, PLEASE VISIT OUR WEBSITE, [WWW.MAGICO.NET](http://WWW.MAGICO.NET). BEFORE UNPACKING AND PLAYING YOUR SPEAKERS, PLEASE READ THE FOLLOWING MANUAL FULLY. IT WILL PROVIDE YOU WITH DIRECTIONS FOR PROPERLY SETTING UP, POSITIONING, CONNECTING, AND CARING FOR YOUR SPEAKERS. FOLLOWING THESE INSTRUCTIONS WILL ENSURE A SMOOTH INSTALLATION AND OPTIMUM SPEAKER PERFORMANCE. I WISH YOU MANY HOURS OF LISTENING PLEASURE. KINDEST REGARDS, ALON WOLF, CEO MAGICO, LLC

### **WARNING**

The S5 uses a tweeter equipped with a Beryllium dome, allowing a frequency range extending beyond 40kHz. In its solid form, Beryllium is harmless. However, due to its nature, certain special precautions should be observed to avoid exposure to unnecessary risks such as:

- Under no circumstances should the Beryllium dome be subjected to any form of abrasive action.
- In the unlikely case of damage to the dome, of any form, a wide piece of adhesive tape should be immediately used to seal the whole front surface of the tweeter. You should then inform the dealer from whom you purchased the product so that the tweeter can be removed and replaced by a professional.
- If the dome is broken in any way giving rise to loose particles of Beryllium, these should be carefully collected with the use of an adhesive tape and sealed in a zip-top bag to be returned with the tweeter.

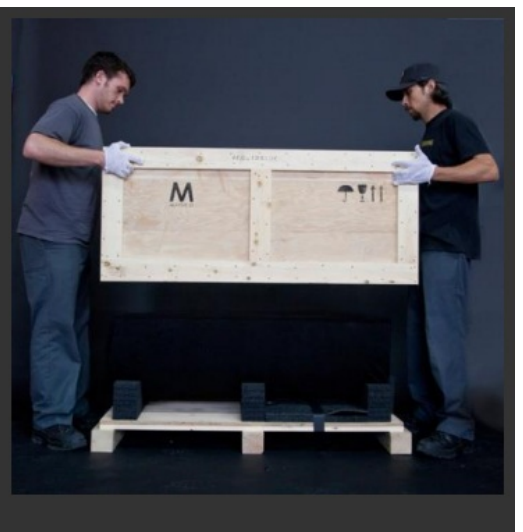
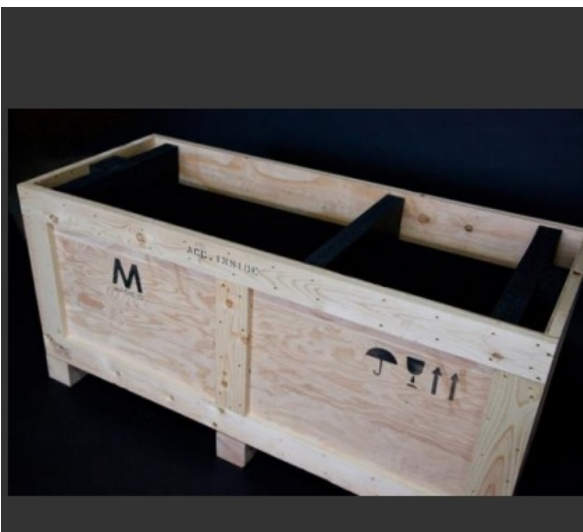
### **MAGICO S5 UNPACKING INSTRUCTIONS**

**Required:** Flat-head screwdriver, two able-bodied individuals, and a padded Hand truck (if is necessary to move the speaker more than a few feet from the crate)

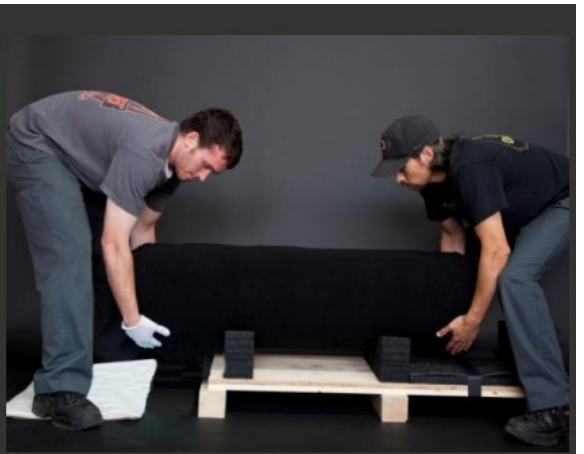
- Position the crate as close to listening position as possible.
- Remove 10 clamps using a flathead screwdriver or pry bar.



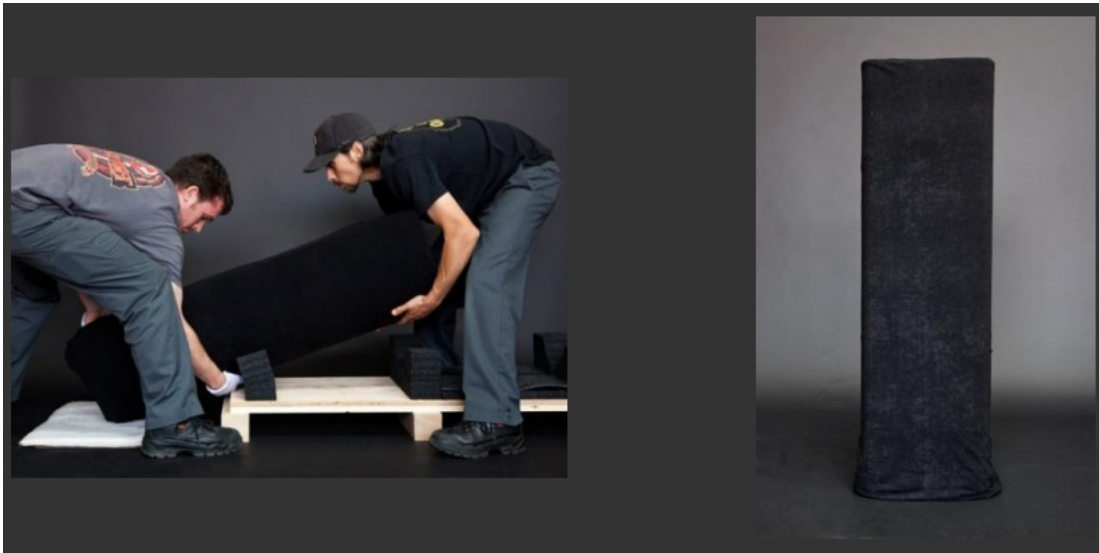
- Remove crate lid and 3 pieces of interior foam.
- With two people, lift the walls off of the crate, straight up and over the speaker, careful not to hit the bottom or the top of the speaker. Set aside.



- With two people, lift the speaker from the bottom and move the speaker down on the base of the crate until the top of the speaker is lying in the middle foam rib of the crate.



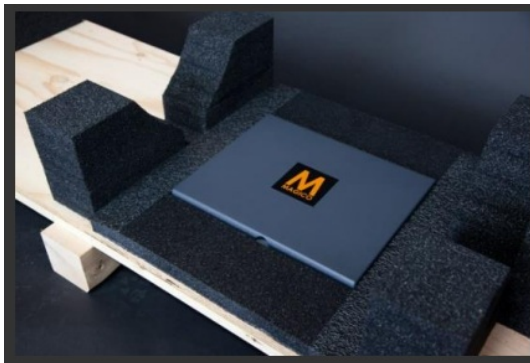
- Tilt the Speaker up onto a soft surface, Make sure that the back of the speaker does not hit the crate and that the binding posts do not touch the floor.



- If it is necessary to move the speaker from the crate to the listening position, use a hand truck with a sturdy piece of foam to protect the speaker.
- Remove the velvet packing bag, protective plastic, and Foam Tweeter guard.



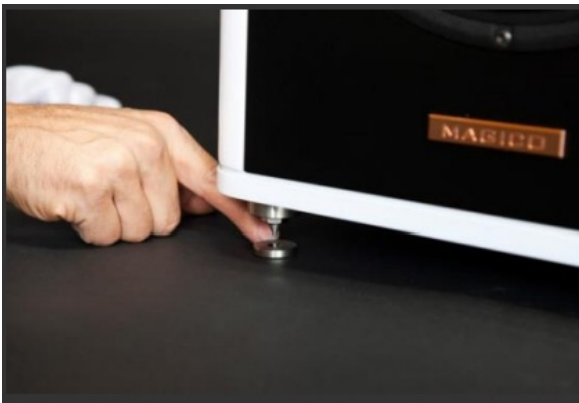
- Remove the Accessory Kit from the crate.
- Screw one hex-JAM NUT onto each spiked foot.



- Carefully tilt the Speaker to the side while another person screws in the spiked foot.



- Position the floor saver under the spiked foot and slowly lower the speaker so that the spike rests in the floor saver.
- Repeat for the other side and rear foot. To adjust the level of the speaker, partially unscrew two of the feet until level and stability are achieved. Screw the hex-jam nut upwards so that it is flush with the round puck of the foot assembly.



- The speakers are now ready to hook up.



### **SPEAKER PLACEMENT AND POSITIONING**

THE MAGICO S5 LOUDSPEAKERS ARE PRECISION INSTRUMENTS FOR MUSIC REPRODUCTION. AS SUCH, PROPER CARE AND ATTENTION TO DETAIL WHEN SETTING UP THESE SPEAKERS WILL YIELD THE MAXIMUM PERFORMANCE, REGARDLESS OF THE PARTICULAR ROOM. FOLLOWING THESE SET-UP



GUIDELINES WILL ENSURE THE SPEAKERS ARE PROPERLY POSITIONED TO DELIVER THE OPTIMUM LISTENING EXPERIENCE. ALL THAT IS REQUIRED IS A TAPE MEASURE, A PEN, A CALCULATOR, A BALL OF STRING, A COUPLE OF DEMO CDS, AND SOME PATIENCE.

### **PLACEMENT—S5s with BACK AND SIDE WALLS**

BEFORE YOU BEGIN: LOOK FOR OBVIOUS IMPEDIMENTS INCLUDING ANYTHING THAT COULD IMPEDE OR DIMINISH THE SOUND—E.G., OTHER SPEAKERS, AMPLIFIERS, EQUIPMENT RACKS, ANYTHING ON THE WALL THAT COULD CAUSE A REFLECTION, A SEVERE MISMATCH IN QUALITY AMONG INDIVIDUAL COMPONENTS, AND UNNECESSARY OR POORLY RUN SPEAKER/INTERCONNECT CABLES.

### **BASS—DISTANCE FROM THE REAR WALL**

THE INITIAL PLACEMENT SHOULD BE APPROXIMATELY 20 INCHES (1/2 M) FROM THE BACK OF THE LOUDSPEAKER TO THE BACK WALL. SINCE WE HAVE SHORT AUDITORY MEMORY, THE SELECTED DEMO MUSIC CUT SHOULD BE BRIEF—30 SECONDS – 1 MINUTE MAX. IT SHOULD BE A WELL-RECORDED JAZZ CUT WITH GOOD BASS GUITAR OR PERCUSSION. WHAT WE ARE LISTENING FOR AT THIS TIME IS THE DEFINITION OF THE BASS AND THE RIGHT SENSE OF PROPORTION. NEXT, MOVE THE SPEAKER 6 – 8 INCHES (15 – 20 CM) FORWARD AND REPEAT THE LISTENING PROCESS. REPEAT THIS PROCESS, MOVING THE LOUDSPEAKER FORWARD IN 6 – 8 INCH (15 -20 CM) INCREMENTS. WHEN YOU REACH THE POINT FROM WHICH MOVING THE SPEAKER FORWARD SOUNDS WORSE THAN THE PREVIOUS LISTENING POINT, MOVE THE LOUDSPEAKER BACK TO THIS POSITION AND MARK THIS DISTANCE FROM THE REAR WALL.

### **MIDRANGE— PLACEMENT ABOUT SIDE WALLS**

FOR LATERAL PLACEMENT, BEGIN BY DIVIDING THE ROOM WIDTH BY 14. INITIAL PLACEMENT OF THE LOUDSPEAKERS WILL BE AT 3 AND 11. THE DISTANCE FROM THE LOUDSPEAKER TO THE EARS HAS TO BE PRECISELY EQUAL. THIS MEASUREMENT IS CRITICAL. THE MUSIC FOR THIS PROCESS SHOULD BE A FEMALE VOICE AND PIANO. WE ARE LISTENING FOR THE IMAGE OF HER VOICE TO BE FOCUSED. THE RULE FOR THE TOE-IN IS TO PICK A POINT APPROXIMATELY 1 – 2 FEET (1/2 M) BEHIND THE LISTENER'S HEAD. TOE THE LOUDSPEAKERS IN TO INTERSECT AT THAT POINT. IF THE SOUND IS TOO BRIGHT, TOE THE SPEAKERS OUT A LITTLE MORE. IF THE SOUND IS TOO DULL, TOE THE SPEAKERS IN A LITTLE MORE.

- REPEAT THE ABOVE PROCESS WITH THE LOUDSPEAKERS AT THE 4 AND 10 POSITIONS. THEN REPEAT, ONCE AGAIN WITH THE SPEAKERS AT THE 5 AND 9 POSITIONS.

### **SUMMARY**

ONCE THE INITIAL PROCESS HAS BEEN COMPLETED, RETURN TO THE BASS SET-UP TO ENSURE THAT THE LOUDSPEAKERS ARE THE PROPER DISTANCE FROM THE BACK WALL. WHEN THE PROCESS HAS BEEN COMPLETED, MARK THE SPEAKER LOCATION WITH TAPE SO THAT THE SPEAKERS CAN BE RETURNED THERE FOR FURTHER LISTENING.

### **POSITIONING—S5s about THE LISTENER**

- THE SPEAKER AND THE LISTENER SHOULD FORM AN ISOSCELES TRIANGLE.
- THE LISTENER SHOULD BE EXACTLY EQUIDISTANT BETWEEN THE TWO

LOUDSPEAKERS. THE BEST WAY TO DETERMINE THIS IS WITH A PIECE OF STRING. PICK A FIXED SPOT AT THE LISTENING POSITION. RUN THE STRING FROM THIS SPOT TO THE FRONT OF THE TWEETER OF THE LEFT SPEAKER. REPEAT THE PROCESS FOR THE RIGHT SPEAKER. IT IS CRITICALLY IMPORTANT TO KEEP THIS DISTANCE PRECISELY THE SAME.

## CONNECTIONS

CONNECTIONS SHOULD BE MADE WITH ALL ELECTRONIC EQUIPMENT (AMPLIFIERS, PREAMPLIFIERS) TURNED OFF. THERE ARE TWO TERMINALS AT THE BACK OF THE SPEAKER. THE TERMINALS ARE INSULATED TO ACCEPT A VARIETY OF CABLE TERMINATIONS FOR MOST APPLICATIONS AND TO PREVENT ANY LIKELIHOOD OF ELECTRICAL SHOCK, EVEN WHEN THE SPEAKERS ARE USED WITH THE HIGHEST-POWERED AMPLIFIERS. DO NOT USE TOOLS TO TIGHTEN THE BINDING POSTS.

## BREAK-IN

A LOUDSPEAKER IS A MECHANICAL DEVICE AND AS SUCH REQUIRES AN EXTENDED INITIAL PERIOD OF NORMAL USE DURING WHICH A NOTICEABLE IMPROVEMENT IN SOUND QUALITY WILL OCCUR. DO NOT ATTEMPT TO ACCELERATE THE BREAK-IN PROCESS BY PLAYING SINE WAVES, TONE SWEEPS, BREAK-IN CDS OF ANY SORT, OR OTHER GENERATED SIGNALS.

## CARE

FOR ALUMINUM PANELS USE A LINT-FREE SOFT CLOTH (PROVIDED IN THE ACCESSORY KIT). FOR PAINTED SURFACES, USE A PRODUCT SUCH AS MEGUIAR'S PROFESSIONAL FINAL INSPECTION 34. DO NOT USE CLEANERS THAT CONTAIN AMMONIA, STRONG SOLVENTS, OR ABRASIVE MATERIALS. USE OF THESE CLEANERS CAN DEGRADE, SCRATCH, OR DESTROY THE FINISH.

## SPECIFICATIONS

- DESCRIPTION:.....3-WAY SEALED  
ENCLOSURE
- FREQUENCY RESPONSE:.....(+/- 2dB) 22HZ – 50KHZ (IN ROOM)
- EFFICIENCY (2.8V/1M):.....  
.....89dB/WATT
- NOMINAL IMPEDANCE:..... 4  
OHMS
- POWER HANDLING..... 50-1200  
WATTS
- DIMENSIONS (HXDXW):..... 48" X 14" X 15" (122cm x 35cm x 38cm)
- WEIGHT:..... 190 LBS (86.2  
kg)

## LIMITED WARRANTY

### DEAR MAGICO PURCHASER,

THIS PRODUCT HAS BEEN DESIGNED AND MANUFACTURED TO THE HIGHEST QUALITY STANDARDS. HOWEVER, IF SOMETHING DOES GO WRONG WITH THIS PRODUCT, MAGICO, LLC AND ITS NATIONAL DISTRIBUTORS WARRANT THE REPLACEMENT OF DEFECTIVE PARTS INCLUDING LABOR (EXCLUSIONS MAY APPLY) IN ANY COUNTRY SERVED BY AN OFFICIAL MAGICO, LLC DISTRIBUTOR. THIS LIMITED WARRANTY IS VALID FOR 5 YEARS FROM THE DATE OF PURCHASE OR TWO YEARS FOR ELECTRONICS INCLUDING AMPLIFIED LOUDSPEAKERS.

## TERMS AND CONDITIONS

1. THE WARRANTY IS LIMITED TO THE REPAIR OF THE EQUIPMENT. NEITHER TRANSPORTATION, SHIPPING, ANY OTHER COSTS, NOR ANY RISK FOR REMOVAL, TRANSPORTATION, AND INSTALLATION OF PRODUCTS IS COVERED BY THIS WARRANTY.
2. THIS WARRANTY IS ONLY VALID FOR THE ORIGINAL OWNER. IT IS NOT TRANSFERABLE. IT IS VALID

ONLY WHEN PURCHASED FROM AN AUTHORIZED MAGICO DEALER. A VALID RECEIPT SHOWING THE PURCHASER'S NAME, DATE OF PURCHASE, AND DEALER INFORMATION MUST BE SUBMITTED WITH ALL WARRANTY CLAIMS.

3. THIS WARRANTY WILL NOT BE APPLICABLE IN CASES OTHER THAN DEFECTS IN MATERIALS AND/OR WORKMANSHIP AT THE TIME OF PURCHASE AND WILL NOT BE APPLICABLE FOR DAMAGES CAUSED BY INCORRECT INSTALLATION, CONNECTION OR PACKING, FOR DAMAGES CAUSED BY ANY USE OTHER THAN CORRECT USE DESCRIBED IN THE USER MANUAL, NEGLIGENCE, MODIFICATIONS, OR USE OF PARTS THAT ARE NOT MADE OR AUTHORIZED BY MAGICO, LLC, FOR DAMAGES CAUSED BY FAULTY OR UNSUITABLE ANCILLARY EQUIPMENT, FOR DAMAGES CAUSED BY ACCIDENTS, LIGHTNING, WATER, FIRE HEAT, EXTREME WEATHER CONDITION, WAR, PUBLIC DISTURBANCES OR ANY OTHER CAUSE BEYOND THE REASONABLE CONTROL OF MAGICO, LLC AND ITS APPOINTED DISTRIBUTORS, FOR PRODUCTS WHOSE SERIAL NUMBER HAS BEEN ALTERED, DELETED, REMOVED, OR MADE ILLEGIBLE, IF REPAIRS OR MODIFICATIONS HAVE BEEN EXECUTED BY AN UNAUTHORIZED PERSON.
4. THIS GUARANTEE COMPLEMENTS ANY NATIONAL/REGIONAL LAW OBLIGATIONS OF DEALERS OR NATIONAL DISTRIBUTORS AND DOES NOT AFFECT YOUR STATUTORY RIGHTS AS A CUSTOMER.
5. UNAUTHORIZED DISMANTLING OF THIS PRODUCT WILL RENDER THIS WARRANTY VOID.
6. MAGICO, LLC STRIVES TO MANUFACTURE THE VERY FINEST POSSIBLE EQUIPMENT AND THEREFORE RESERVES THE RIGHT TO MAKE CHANGES OR IMPROVEMENTS WITHOUT NOTICE.

#### **SERIAL NUMBERS**

PLEASE TAKE THE TIME TO RECORD YOUR SPEAKERS' SERIAL NUMBERS BELOW.

#### **DISCLAIMER**

MAGICO, LLC MAKES THIS MANUAL AND THE CONTAINED INFORMATION AVAILABLE ON AN "AS IS" BASIS. ALL WARRANTIES AND REPRESENTATIONS OF ANY KIND ABOUT SAID INFORMATION ARE DISCLAIMED, INCLUDING THE IMPLIED WARRANTIES OF MERCHANTABILITY AND FITNESS FOR A PARTICULAR USE. UNDER NO CIRCUMSTANCES WILL MAGICO, LLC, OR ANY OF ITS OFFICERS OR EMPLOYEES BE LIABLE FOR ANY CONSEQUENTIAL, INCIDENTAL, SPECIAL, OR EXEMPLARY DAMAGES EVEN IF APPRISED OF THE LIKELIHOOD OF SUCH DAMAGES OCCURRING. MAGICO, LLC DOES NOT WARRANT THE INFORMATION AGAINST DEFICIENCIES OF ANY KIND.

#### **COMPANY INFORMATION**

MAGICO, LLC 932 PARKER ST. #2 BERKELEY, CA 94710 U.S.A.

- **EMAIL:** [INFO@MAGICO.NET](mailto:INFO@MAGICO.NET)
- **PHONE:** +1.510.649.9700
- **FAX:** +1.510.649.1180
- **BUSINESS HOURS:** 8 AM – 4 PM PST





[MAGICO S5 Mk.II Loudspeaker](#) [pdf] User Guide  
S5 Mk.II Loudspeaker, S5, Mk.II Loudspeaker, Loudspeaker

## References

- [M !\[\]\(38441ceaa711016e0bf2ad46ad394ff4\_img.jpg\) MAGICO Loudspeakers — High-End Loudspeakers](#)
- [User Manual](#)

### Manuals+, Privacy Policy

This website is an independent publication and is neither affiliated with nor endorsed by any of the trademark owners. The "Bluetooth®" word mark and logos are registered trademarks owned by Bluetooth SIG, Inc. The "Wi-Fi®" word mark and logos are registered trademarks owned by the Wi-Fi Alliance. Any use of these marks on this website does not imply any affiliation with or endorsement.