

**magic
bullet.**
MBF50200
Combo Blender



magic bullet MBF50200 Combo Blender User Guide

[Home](#) » [Magic Bullet](#) » magic bullet MBF50200 Combo Blender User Guide 

Contents

- [1 magic bullet MBF50200 Combo Blender](#)
- [2 Product Specifications](#)
- [3 important safeguards](#)
- [4 what's included](#)
- [5 assembly guide](#)
- [6 user interface](#)
- [7 limited warranty](#)
- [8 product registration](#)
- [9 Frequently Asked Questions](#)
- [10 Documents / Resources](#)
 - [10.1 References](#)
- [11 Related Posts](#)

**magic
bullet.**

magic bullet MBF50200 Combo Blender



Product Specifications

- **Intended Use:** Combo Blender for household use
- **Usage:** Blending hot, warm, or carbonated ingredients
- **Safety Feature:** Vented pitcher lid for secure blending
- **Power:** Electric, requires plugging into an outlet

important safeguards

When operating your magic bullet® Combo Blender, remember: safety comes first. When using any electrical appliance, basic safety precautions should always be observed, including the following:

warning! To avoid the risk of serious injury, death, property damage, or damage to your device carefully read all instructions in this User Guide before operating your magic bullet® Combo Blender.

If you let anyone else use your magic bullet® Combo Blender, make sure that they understand the health and safety information in this User Guide, as well as any additional safety or usage instructions provided. Each person using a device should completely read the User Guide to become familiar with the safe operation of the unit.

Save these instructions
for household use only

READ ALL INSTRUCTIONS CAREFULLY AND THOROUGHLY BEFORE OPERATING.

general use and safety

Failure to follow all instructions regarding the use of your magic bullet® Combo Blender may result in serious personal injury, death, or property damage. Be aware of possible hazards when using or storing your magic bullet® Combo Blender.

warning! EXTREME CAUTION SHOULD BE EXERCISED WHEN USING HOT, WARM, OR CARBONATED INGREDIENTS IN THE PITCHER. ALWAYS MAKE SURE THE VENTED PITCHER LID IS SECURED ONTO THE PITCHER BEFORE OPERATING THE BLENDER WITH THE PITCHER ATTACHED.

warning! NEVER BLEND HOT, WARM, OR CARBONATED INGREDIENTS IN THE BLENDING CUP AS IT MAY PRESSURIZE THE CONTENTS AND ERUPT UPON OPENING, CAUSING SERIOUS BODILY INJURIES OR DAMAGE

ONLY USE THE BLENDING PITCHER AND VENTED PITCHER LID TO BLEND HOT, WARM, OR CARBONATED INGREDIENTS.

HOT, WARM, AND CARBONATED INGREDIENTS SHOULD ONLY BE BLENDED USING THE BLENDING PITCHER, WITH THE VENTED LID ATTACHED.

- Do not use the magic bullet® Combo Blender for anything other than its intended purpose.
- Do not leave or place non-food items in any of the attachments while blending. Doing so may damage the unit or crack or shatter the attachment, resulting in bodily injury or property damage.
- Close supervision is necessary when any appliance is used by or near children to ensure they do not play with the appliance. Keep cord out of reach of children.
- This appliance is not intended for use by persons (including children) with reduced physical, sensory, or mental capabilities, or lack of experience and knowledge unless they are closely supervised and instructed concerning the use of the appliance by a person responsible for their safety.
- NEVER LEAVE THE MAGIC BULLET® COMBO BLENDER UNATTENDED WHILE IT IS IN USE.
- Do not place or operate your magic bullet® Combo Blender on uneven or unstable surfaces.
- The risk of fire, shock, or damage to your Magic bullet® Combo Blender during cleaning can be reduced by taking the following precautions:
 - Unplug and power off your device before cleaning.
 - Only clean the exterior of your device.
 - Clean your device with a dry cloth.
- Do not attempt to clean the Motor Base by immersing it in water or other cleaning liquids. Only gently wipe and dry the Motor Base with a clean cloth.
- Do not place any magic bullet® part or accessory in a microwave, conventional oven, air fryer, or stovetop pot, or immerse in boiling water, as this will damage the part.
- Do not place or operate your magic bullet® Combo Blender on or near a hot gas or electric burner, or in a heated oven.
- NEVER wash your magic bullet® parts or accessories using the sanitize or heat cycle of your dishwasher. Doing so can warp the part, which can create hazardous conditions during use that may result in bodily injury or property damage.
- NEVER place any magic bullet® parts or accessories in the freezer or use them as storage containers in the freezer.
- Always ensure your magic bullet® Combo Blender is powered off and unplugged, and that the blades have completely stopped rotating before removing or cleaning the unit.
- Remove and safely discard any packaging material or promotional labels before using the appliance for the first time.
- Do not operate if any of the parts and accessories are damaged in any manner which may impair proper function or create a safety hazard. Contact Customer Service for assistance at: 1 [800-523-5993](tel:800-523-5993).
- Do not use parts or accessories from other manufacturers or different models of magic bullet® products. Use of parts and accessories NOT provided by magic bullet® may damage your unit or cause serious injury.

- Use only genuine magic bullet® attachments/accessories specifically designed for your magic bullet® Combo Blender. Aftermarket parts are not made to magic bullet® specifications and may damage your unit or cause serious injury.
- Do not attempt to defeat any safety interlock mechanisms.
- DO NOT USE OUTDOORS.
- ALWAYS UNPLUG THE MAGIC BULLET® COMBO BLENDER WHEN NOT IN USE.

blending with magic bullet® cups

warning! NEVER BLEND

HOT, WARM, OR CARBONATED INGREDIENTS IN THE MAGIC BULLET® CUP! FRICTION FROM ROTATING BLADES CAN GENERATE HEAT INSIDE THE CUP THAT MAY CAUSE THE CUP AND BLADE TO SEPARATE UPON OPENING OR REMOVING FROM THE POWER BASE. THIS MAY RESULT IN THE EXPULSION OF HOT LIQUIDS FROM THE CUP OR EXPOSURE TO THE BLADES, BOTH OF WHICH CAN CAUSE SERIOUS INJURY OR PROPERTY DAMAGE. ONLY USE THE BLENDING PITCHER AND VENTED PITCHER LID TO BLEND HOT, WARM, OR CARBONATED INGREDIENTS.

NEVER USE THE MAGIC BULLET® BLENDING CUPS TO BLEND HOT OR WARM INGREDIENTS.

- Starting with hot or warm ingredients allows more heat and pressure to build up when blending. This can cause the Cup to separate from the Blade, potentially expelling hot ingredients and exposing the blade, both of which can cause injuries.
- Only blend room-temperature or refrigerated ingredients (70°F/21°C or cooler) inside the Cup even if the recipe used calls for a temperature warmer than room-temperature. After blending, you may transfer the mixture to a stovetop pot to heat.
- DO NOT BLEND INGREDIENTS IN THE MAGIC BULLET® CUP FOR CONSECUTIVE BLENDING CYCLES.
 - Blending causes ingredients to heat up, which builds pressure in the Cup over time. Multiple blending cycles may cause the Cup to pressurize and separate from the blade, exposing the blade or expelling heated ingredients —both of which can cause injury.
 - After 2 consecutive blends cycles, wait at least 10 to 15 minutes before blending another cycle.
 - Always untwist the Blade from the Blending Cup slowly, carefully, and pointed away from your body to release built-up pressure. NEVER attempt to open the Cup if it feels hot or warm to the touch. See CUP CAUTION section for details.
- DO NOT BLEND ANYTHING CARBONATED OR EFFERVESCENT — NO BUBBLES – IN THE MAGIC BULLET® CUP.
 - Carbonated and effervescent ingredients (soda, carbonated water, baking powder, baking soda, yeast, some batters, cake mix, dry ice, or other ingredients that become bubbly) release gases that increase pressure within the Cup. Pressure from released gases can cause a sealed magic bullet® Cup to separate, resulting in possible injury and/or property damage.

note: Some protein powders include effervescent ingredients. Always check the listed ingredients before adding.
- DO NOT OVERFILL THE MAGIC BULLET® CUP.
 - Filling above the MAX line can result in leakage. The cyclonic action of the magic bullet® requires an adequate amount of space to extract effectively. Exceeding the MAX line can result in leakage, and may create a dangerous pressurization which can cause the Cup and Cross Blade assembly to separate, resulting in possible injury and/or property damage.

- DO NOT LEAVE BLENDED FOODS INSIDE A SEALED CUP. Blended mixtures can spoil and ferment, increasing pressure when left in the Cup.
 - Use the To-Go Lid or transfer to a vented container for storage after blending.

magic bullet® cup caution

warning! NEVER ATTEMPT

TO OPEN A SEALED MAGIC BULLET® CUP IF IT FEELS HOT OR WARM TO THE TOUCH; THE CONTENTS MAY BE HEATED AND PRESSURIZED, CAUSING THE CUP TO VIOLENTLY SEPARATE WHEN OPENED, WHICH CAN RESULT IN BODILY INJURY AND BURNS. IF THE CUP FEELS HOT OR WARM, FOLLOW THESE STEPS:

1. Cease blending immediately and unplug the unit from the outlet.
2. LEAVE ALONE, DO NOT OPEN. Leave the Cup where it is and do not touch it or allow others to touch it. Do not attempt to continue blending.
3. Do not attempt to disengage the Cup from the Motor Base. DO NOT attempt to separate the Cup from the Cross Blade by heat or force, or by prying apart the components, which may crack or shatter the Cup and result in bodily injury.
4. Allow the Cup to cool for at least 30 minutes.
5. After 30 minutes, check if the Cup is completely cooled. If still warm, allow to cool more.
6. If cool to the touch, slowly disengage the Cup from the Motor Base.
7. With the Cup pointed away from your face and body, cover the blade with a towel and slowly untwist the Cross Blade from the Cup to gently release any residual pressure.

warning! NEVER ATTEMPT TO SEPARATE THE CUP FROM THE CROSS BLADE BY FORCING OR PRYING APART THE COMPONENTS. THIS MAY CRACK OR SHATTER THE CUP, RESULTING IN BODILY INJURY. IF YOU ARE UNABLE TO UNTWIST THE CROSS BLADE FROM THE CUP, CONTACT CUSTOMER SERVICE. IF YOU ARE UNABLE TO UNTWIST THE CUP FROM THE CROSS BLADE, NEVER LEAVE THE SEALED CONTENTS OUT FOR A PROLONGED PERIOD OF TIME. THE CONTENTS MAY FERMENT, CAUSING THE CUP TO VIOLENTLY SEPARATE FROM THE BLADE, WHICH MAY RESULT IN BODILY INJURY OR PROPERTY DAMAGE. DISPOSE OF THE CUP AND CONTENTS PROPERLY SO YOU OR OTHERS WILL NOT BE INJURED IF FERMENTATION CAUSES THE CUP AND BLADE TO SEPARATE.

cup safety:

Proper Cup use is important for the safe operation of your magic bullet®. Using the Cup inconsistent with these instructions may result in bodily injury, property damage, or damage to your unit. Remember, NEVER blend hot, warm, or carbonated ingredients or liquid in the magic bullet® Cup!

- ALWAYS securely tighten the Cross Blade to the Cup to prevent leakage.
- Always make sure the Cup is securely locked onto the Motor Base before blending. The motor will not turn on unless the Cup is set in the locked position.
- Do not overfill or exceed the MAX line. Exceeding the MAX line can result in leakage.
- Do not remove the Cup while the unit is in operation.
- NEVER operate your magic bullet® Cup when empty.
- Do not attempt to disengage the Cup from the Motor Base if the Cup starts to leak during blending. Leakage can indicate that the Cup is about to separate from the blade, which can expose the Blade and cause laceration injuries. If you notice leaking, unplug the unit immediately and allow the motor to come to a complete stop

before removing the Cup from the Motor Base. Do not crush ice or overfill the Cup with ice. Your magic bullet® Combo Blender is not intended to be used as an ice crusher. Overfilling the Cup with ice may cause ice to wedge into the blade, inhibiting blades from turning, and overheating the motor.

- DO NOT overfill the Cup with ice. Always use sufficient liquid ingredients when blending.
- Do not place any magic bullet® parts or accessories on the bottom rack of your dishwasher or use the heat/sanitize cycle.
- Cups, To-Go Lids, and other magic bullet® parts or accessories are NOT microwave-safe.
- Do not use the Blade as a storage lid, as it is not vented. Your blended mixture can ferment, increasing pressure within the Cup, which may cause separation that can lead to bodily injury and property damage. Use the To-Go Lid or transfer to a vented container for storage after blending.
- Do not leave any non-food items, including utensils, inside the Cup when blending.
- Do not blend stone fruit in this appliance unless pits/seeds have been removed. Fruit pits may damage the Cup, potentially resulting in shattering and personal injury. In addition, apple seeds and the pits of cherries, plums, peaches, and apricots contain a chemical known to release cyanide into the body when ingested.
- Periodically inspect your magic bullet® Cup for damage or wear that may impair proper function or create a safety hazard.
- Do not use the Cup if you detect cracking, cloudiness, or other damage. You may purchase new Cups at [getmagicbullet.com](https://www.getmagicbullet.com) or by contacting Customer Service.
- Periodically inspect your magic bullet® Cross Blade. If the blades do not rotate freely or if the gasket is missing or damaged, immediately discontinue use and contact Customer Service.
- Do not use aftermarket replacement parts for your magic bullet® Combo Blender. Aftermarket replacement parts may result in damage to your magic bullet® Combo Blender or create safety hazards resulting in bodily injury or damage. Only order replacement parts from [getmagicbullet.com](https://www.getmagicbullet.com) or by contacting Customer Service at: 1 [800-523-5993](tel:800-523-5993), please specify the model for parts that are compatible with your unit.

using the blending pitcher:

warning! ONLY USE THE BLENDING PITCHER WITH THE WITH THE VENTED PITCHER LID ATTACHED TO BLEND HOT, WARM, OR CARBONATED INGREDIENTS. NEVER BLEND HOT OR WARM INGREDIENTS INSIDE THE MAGIC BULLET® CUP. USING THE CUP TO BLEND HOT OR WARM INGREDIENTS MAY CAUSE THE CUP TO SEPARATE, EXPELLING HOT CONTENTS OR EXPOSING THE BLADE, BOTH OF WHICH CAN CAUSE BODILY INJURY AND PROPERTY DAMAGE.

- ALWAYS affix the vented Pitcher Lid to the Blending Pitcher with the Cap twisted closed when starting a blending cycle to prevent ingredients from splashing out of the blender. This is especially important when blending hot ingredients as to prevent risk of burns, bodily injury, or property damage.
- After blending hot ingredients or liquids, exercise caution when opening the Pitcher Lid; hot steam or the splattering of hot ingredients may occur.
- Do not overfill the Blending Pitcher beyond the MAX line.

warning! PRESSURE GENERATED FROM BLENDING HOT LIQUIDS MAY PUSH THE LID OFF THE PITCHER. TO PREVENT POSSIBLE BURN INJURIES, DO NOT FILL THE PITCHER BEYOND THE MAX LINE.

warning! TO INCORPORATE INGREDIENTS DURING BLENDING, OPEN THE VENTED CAP AND CAREFULLY POUR OR DROP INGREDIENTS INTO THE MIXTURE. WHEN ADDING INGREDIENTS TO

ALREADY HOT INGREDIENTS OR LIQUIDS, BE MINDFUL OF ESCAPING HOT STEAM OR THE SPLATTERING OF HOT INGREDIENTS.

- When using manual speeds, start blending on the LOW setting. Once ingredients are integrated, adjust speed as needed.

blending pitcher safety

Proper use of the Blending Pitcher is important for the safe operation of your magic bullet® Combo Blender. Using the Blending Pitcher inconsistent with these instructions may result in bodily injury, property damage, or damage to your unit.

- Always operate the Blender Pitcher with the Pitcher Lid securely locked into place.
- Before blending, check that the vent slots on the Pitcher Lid are clear and unobstructed. Clogged or obstructed vent slots can pressurize contents, potentially expelling the Lid from the Blending Pitcher. This can result in personal injury and property damage from escaping steam or hot ingredients.
- For recipes that use hot or warm ingredients, only use the Pitcher. NEVER use the Cup to blend hot or warm ingredients. Once the ingredients are well mixed, twist open the Vented Lid Cap and carefully pour or drop additional ingredients into the blended mixture. If the blended mixture is hot or warm, use caution and open the vented lid cap slowly, being mindful of escaping hot steam or the splattering of hot ingredients. Always reinstall the Vented Lid Cap when you are finished adding ingredients.
- Do not place hands or utensils inside the Blending Pitcher. This can result in severe bodily injury or property damage.
- NEVER USE spatulas, spoons, or other tools that could make contact with the spinning blade during use. Doing so can damage the unit, shatter the Blending Pitcher, and cause severe bodily injury or property damage.

general blade safety:

warning! BLADES ARE SHARP! HANDLE WITH CARE TO AVOID BODILY INJURY. NON-FOOD ITEMS OR HARD INGREDIENTS MAY DAMAGE THE BLADES OF YOUR MAGIC BULLET® COMBO BLENDER. ROUTINELY INSPECT THE BLADES AND DISCONTINUE USE IF DAMAGED. CONTINUED USE WITH DAMAGED BLADES OR USE INCONSISTENT WITH THESE INSTRUCTIONS MAY RESULT IN BODILY INJURY, PROPERTY DAMAGE, OR DAMAGE TO YOUR UNIT. DO NOT TOUCH THE SHARP EDGES OF THE BLADES. TO AVOID LACERATION INJURY, DO NOT HANDLE OR TOUCH ANY SHARP COMPONENTS OF THE BLADE.

NEVER STORE EXPOSED BLADES ON THE MOTOR BASE. EXPOSED BLADES CAN PRESENT THE HAZARD OF LACERATION AND SEVERE PERSONAL INJURY. ALWAYS COVER EXPOSED BLADES WITH THE CUP OR PITCHER.

- Do not remove the Cup or Blending Pitcher until blades have come to a complete stop. Removing before the blades come to a complete stop can cause damage to the attachments or unit.
- Always POWER OFF and UNPLUG the unit and wait until the Blade comes to a complete stop before assembling, disassembling, changing accessories, or cleaning.
- ALWAYS securely tighten the Cross Blade to the Cup or Blending Pitcher to prevent leakage.
- DO NOT attempt to disengage the Cup or Blending Pitcher from the Motor Base if it starts to leak during blending. If a leak occurs, power off or unplug the unit and allow the motor to come to a complete stop before removing the Blending Pitcher. This will prevent risk of separation or exposure to the spinning blade.

- DO NOT crush ice. Your magic bullet® Combo Blender is not intended to be used as an ice crusher, which may shatter the Cup or Blending Pitcher causing injury or damage.
- DO NOT blend stone fruit in this appliance unless pits/seeds have been removed. Fruit pits may damage the Cup, potentially resulting in shattering and personal injury. In addition, apple seeds and the pits of cherries, plums, peaches, and apricots contain a chemical known to release cyanide into the body when ingested.
- Do not overload the Cup or Blending Pitcher as this may prevent the Blade from spinning. If this occurs, turn off the unit, empty some of the contents, reattach, and resume.
- Do not attempt to grind dry ingredients such as grains, cereal, or coffee, as this may damage the motor and/or the Blade. Use of dry ingredients may cause the motor to overheat.
- AVOID CONTACT WITH MOVING PARTS! Keep hands and utensils out of and away from the Blade to reduce the risk of severe personal injury or damage to the unit.
- NEVER place the Blade or any magic bullet® part or accessory on the bottom rack of the dishwasher or use the heat/sanitize cycle while cleaning components in the dishwasher.
- Periodically inspect your Cross Blade. If the blades do not rotate freely or are damaged, immediately discontinue use and contact Customer Service. For optimal performance, we recommend replacing the Blade every 6 months, or as needed, depending on use.
- Use of incompatible parts or aftermarket parts may result in damage to your magic bullet® Combo Blender or create safety hazards that may cause personal injury or damage. When ordering replacement parts, always use genuine magic bullet® parts and accessories from [getmagicbullet.com](https://www.getmagicbullet.com) or contact Customer Service at: 1 [800-523-5993](tel:800-523-5993).

electrical safety:

Modification, improper use, and failure to follow the instructions for proper setup, use, and care of your magic bullet® Combo Blender can increase the risk of serious personal injury, death, or property damage.

- Do not use the unit in countries or locations with different electrical specifications or plug types.
- Do not use the unit with a voltage converter device, as it may cause electrical shorting, fire, or electric shock, resulting in personal injury or product damage.
- Do not use the unit in an area that is wet, or anywhere it could become wet.
- This appliance has a polarized plug (one blade is wider than the other). To reduce the risk of electric shock, this plug will fit in a polarized outlet only one way. If the plug does not fit fully in the outlet, reverse the plug. If it still does not fit, contact a qualified electrician. Do not modify the plug in any way.
- Do not attempt to plug the unit into an electrical outlet with wet hands.
- Do not use the cord, plug, or Motor Base if it has been immersed in water or other liquids. Any significant spillage on, under, or around the Motor Base should be cleaned and dried before plugging in and using the unit.
- Do not modify the electrical cord in any way.
- Do not operate any unit with a damaged electrical cord or plug. The electrical cord and plug are not suitable for replacement. If damaged, the appliance should be replaced. Contact Customer Service for assistance at: 1 [800-523-5993](tel:800-523-5993).
- Do not allow or place the electrical cord near or touching any hot surfaces, heat source, or flame, including the stove.
- Do not allow the electrical cord to hang over the edge of a table or counter.
- Do not pull, twist, or damage the power cord.

- Overloading the unit may overheat the motor and engage the thermal breaker. If the internal thermal breaker shuts off the motor, unplug the Motor Base and let it cool for an hour before attempting to use it again. The thermal breaker will reset when the unit is unplugged and the thermal breaker cools down.
- Always UNPLUG your magic bullet® Combo Blender when it is not in use, and when assembling, disassembling, changing accessories, or cleaning.
- NEVER pull from the power cord to unplug. To unplug, grasp the plug and pull from the outlet.
- Use of incompatible parts or aftermarket parts may result in damage to your magic bullet® Combo Blender or create safety hazards that may cause personal injury or damage. When ordering replacement parts, always use genuine magic bullet® parts and accessories from getmagicbullet.com or contact Customer Service at: 1 [800-523-5993](tel:800-523-5993).

ventilation

- NEVER obstruct the ventilation openings on the bottom of the Motor Base of your magic bullet® Combo Blender. Openings on the bottom of the Motor Base should be free of dust and lint and never obstructed. Obstructions to the ventilation openings may cause the motor to overheat, presenting a fire hazard that may cause serious personal injury, death, or property damage.
- ALWAYS operate the magic bullet® Combo Blender on a level surface, leaving unobstructed space beneath and around the Motor Base to permit proper air circulation. Slots on the bottom of the Motor Base are provided for ventilation to ensure reliable operation and to prevent the motor from overheating.
- NEVER place your magic bullet® Combo Blender on top of flammable materials such as newspapers, tablecloths, napkins, dishtowels, place mats, or other similar materials.

medical safety

Always consult your physician regarding health and nutrition concerns and advice. The information contained in this User Guide, accompanied Recipe Guide, and/or online recipes are general suggestions and ideas, and are not meant to replace the advice of your physician.

medical interactions

- If you are taking any medications, especially cholesterol-lowering medication, blood thinners, blood pressure drugs, tranquilizers, or antidepressants, please check with your physician before trying any of the recipes contained in the Recipe Guide or published online.
- ALWAYS follow recommended maintenance and care instructions in the User Guide. NEVER operate your magic bullet® Combo Blender with damaged components. If your magic bullet® malfunctions or is damaged in any way, immediately discontinue use and contact Customer Service at: 1 [800-523-5993](tel:800-523-5993). If you have any comments, questions, or concerns, please go to getmagicbullet.com or call Customer Service.

Save these instructions

what's included



motor base



pitcher



pitcher lid and
removable lid cap



cross blade



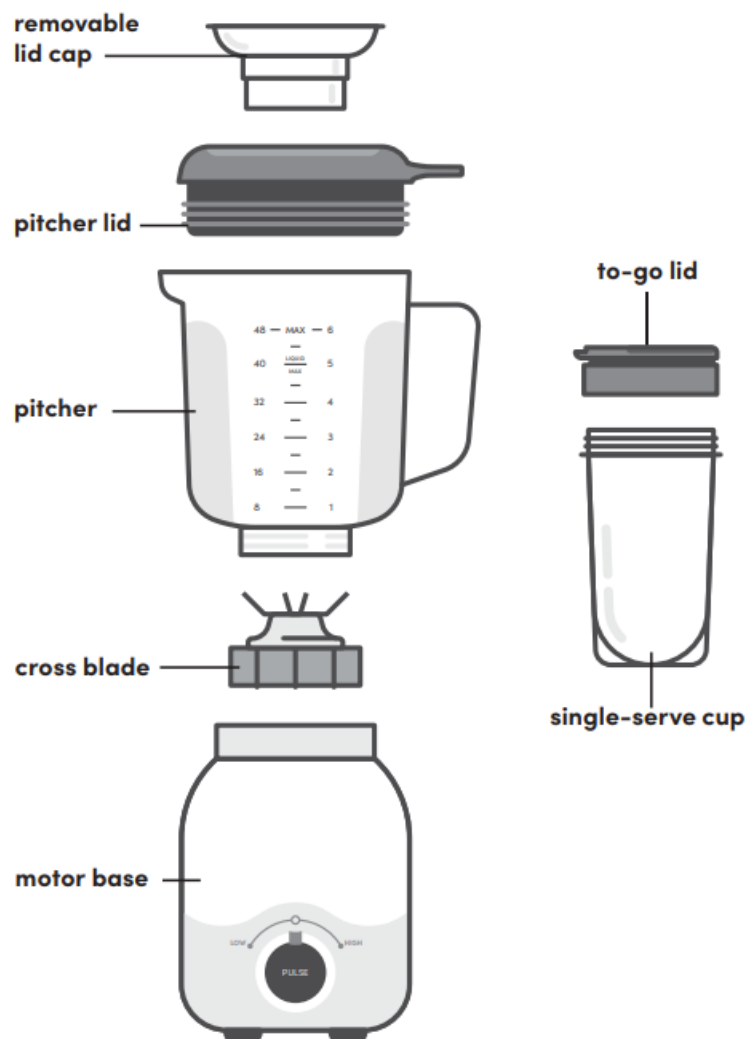
single-serve cup



to-go lid

Product configurations may vary. To see our full list of magic bullet® accessories, please visit getmagicbullet.com

assembly guide



user interface

- **home**

The dial is in the center position. The blender is not running.

- **pulse**

With the dial in the center position, press and hold the PULSE button. To stop blending, release the PULSE button.

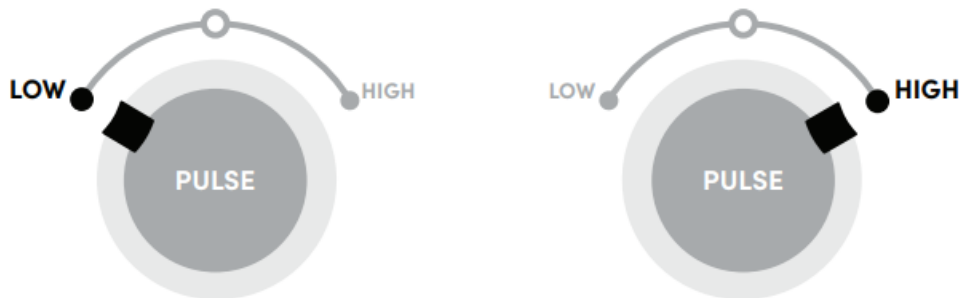


- **low**

Turn the dial to the left to start a preset 1 minute low-speed blend cycle. Turn the dial back to HOME when finished.

- **high**

Turn the dial to the right to start a preset 1 minute high-speed blend cycle. Turn the dial back to HOME when finished.



Warning! NEVER blend hot, warm, or carbonated ingredients in the magic bullet® Cup! When using a Cup attachment, after two consecutive blends cycles, wait 10 to 15 minutes before blending another cycle. Never attempt to open the Cup if it is warm to the touch. Allow the Cup and its contents to cool for at least 30 minutes before attempting to open.

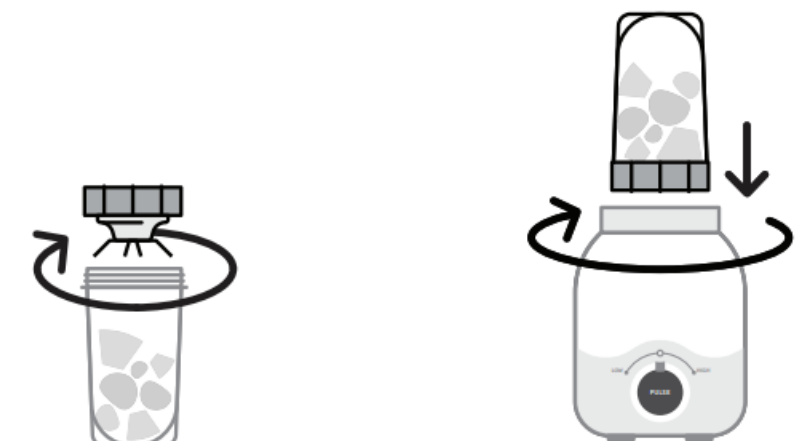
using the single-serve blending cup.

warning: Never blend hot, warm, or carbonated ingredients in any sealed magic bullet® Cup! Only use the Blending Pitcher to blend hot, warm, or carbonated ingredients.

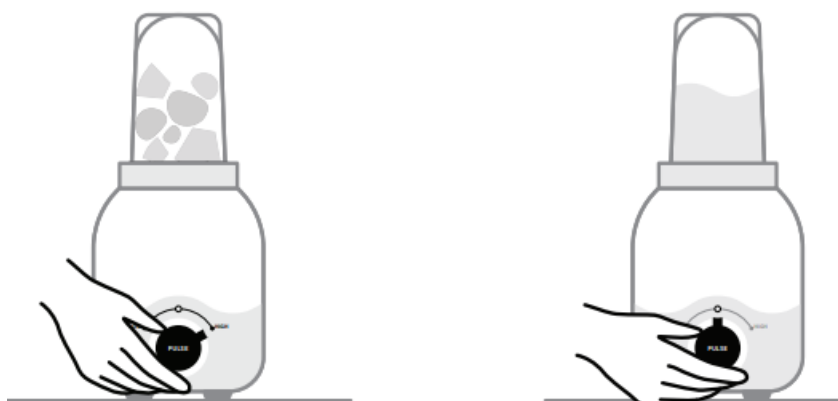
1. Place the Motor Base on a clean, dry, level surface.
2. Add ingredients to the magic bullet Cup. DO NOT exceed the MAX line!



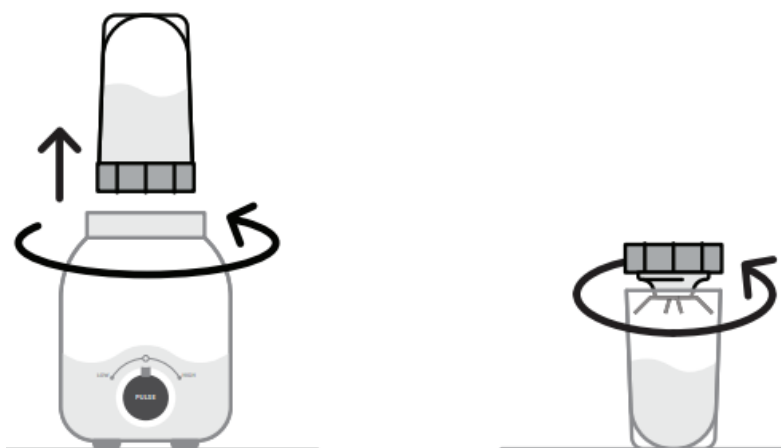
3. Twist on the Cross Blade until the Cup and Blade are firmly sealed.
4. Flip the Cup upside down and mount it onto the Motor Base. Gently twist it clockwise to lock it into place. The motor will not run unless the Cup / Blade assembly is properly attached.



5. Run the desired blending program: twist the Power Control Knob to LOW or HIGH, or keep in the HOME position and press the dial button to PULSE.
6. Twist the Power Control Knob to HOME once you've finished blending.



7. Once the blades have stopped moving, twist the Cup counterclockwise to unlock and remove it from the Motor Base.
8. Turn the sealed Cup right side up (Cross Blade on top), and un-twist the Cross Blade. Enjoy your blend from the Cup, or transfer to another vessel to serve.



using the blending pitcher

warning!

- Only operate the Blending Pitcher with the Pitcher Lid securely attached!
- Never turn the power on while using the Pitcher without the Vented Lid Cap inserted and locked into place!
- Always use extreme care and attention when blending hot liquids or hot ingredients!
- Always use caution when opening the Pitcher Lid after blending hot ingredients!

1. Place the Motor Base on a clean, dry, level surface.
2. Inspect the Pitcher and ensure the Pitcher and Blade are secured. To tighten the Blade, twist it counter-clockwise onto the bottom of the Pitcher. To loosen/release the Blade, twist it clockwise until it detaches from the Pitcher.



3. Add ingredients to the Pitcher.

warning! DO NOT exceed the MAX line!

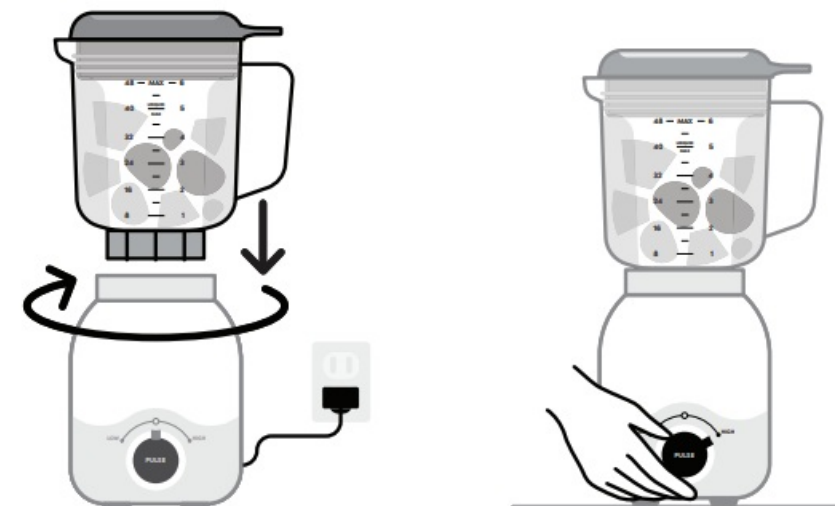
4. Place the Lid on top of the Pitcher and press down firmly to snap into place. Place the Lid Cap over the Lid opening, then press down and twist to lock it in place.



5. Place the Pitcher upright onto the Motor Base so the Blade meets the Motor Base and gently twist clockwise to lock it into place. You will feel a “click” when the blender is secured
Plug the power cord into an outlet.

6. Run the desired blending program: twist the Power Control Knob to LOW or HIGH or keep in the HOME position and press the dial button to PULSE.

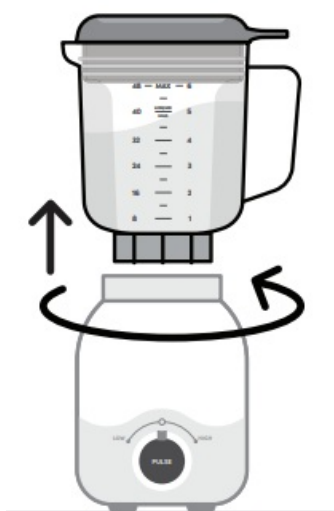
If the blender won't run, double check to ensure the Pitcher is locked in place



7. If using the HIGH or LOW blending cycle, return the Power Control Knob to the HOME position after the 1 minute cycle completes. If ingredients require further blending, return the Power Control Knob to the HOME position first before beginning the next cycle of blending (HIGH, LOW, or PULSE).
8. Twist the Knob to HOME once you're finished blending.



9. Twist the Pitcher counterclockwise and lift off the Motor Base
warning! Blades are sharp. Never insert your hands into the Pitcher.
10. Lift the lid tab with your thumb to loosen and remove the Lid. Transfer contents to your desired serving vessel and enjoy!



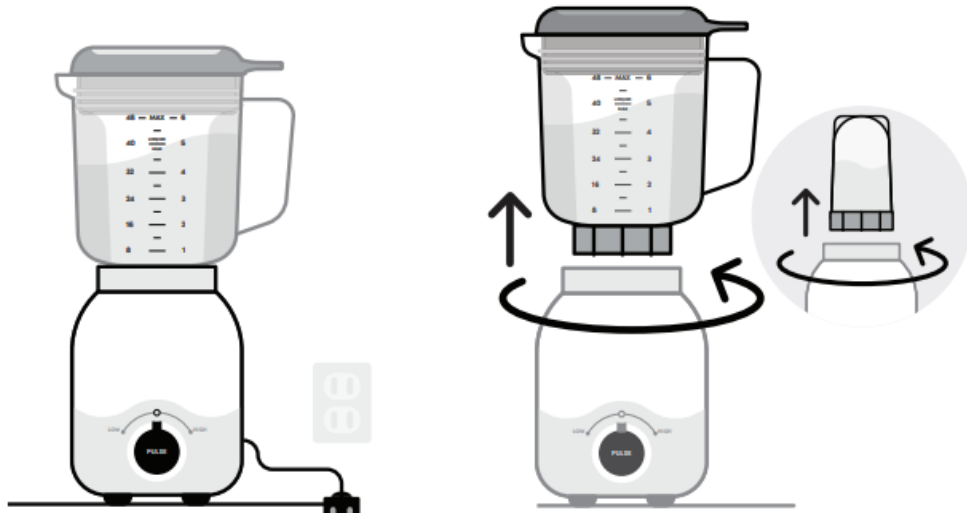
maintaining the magic bullet® Combo Blender.

Cleaning the magic bullet® Combo Blender is easy. All components, except the Motor Base, are dishwasher safe.

warning!

- Blades are sharp! Handle with care.
- Never submerge the Motor
- Base! Keep it away from water and other liquids.

1. POWER OFF and UNPLUG the Motor Base.
2. Separate the Cup or Pitcher from the Motor Base.



3. If using the Pitcher: lift the lid tab with your thumb to loosen and remove the Lid.
4. Remove / transfer any remaining ingredients from the Pitcher or Blending Cup.



5. Twist off the Blade from the Cup or Pitcher.
6. The Cup, Pitcher, and accessories can be hand-washed with soap and water or cleaned in the top rack of the dishwasher



warning! NEVER use the sanitize cycle for risk of warping the accessories

7. Clean the Motor Base by wiping the surface with a damp sponge or cloth.



warning! NEVER submerge the Motor Base in any liquid OR remove pieces from the Motor Base

8. Use a small, dry brush to scrub the actuator clean.



warning! NEVER try to clean the Motor Base while it is plugged in.

storing your blender

Store all components of the unit together in a safe place where they will not be damaged and won't cause harm. Never leave the blades exposed during storage

replacement parts.

- Order new and replacement parts at getmagicbullet.com
- or call customer service at 1 [800-523-5993](tel:800-523-5993).

Use only genuine magic bullet® parts and accessories specifically designed for your magic bullet® ComboB Blender. Aftermarket parts are not made to magic bullet® specifications and may damage your unit or cause serious bodily injury or damage.

limited warranty

limited warranty for magic bullet® Combo Blender:

The magic bullet® limited warranty obligations are confined to the terms set forth below:

Capital Brands Distribution, LLC and magic bullet , LLC, (together herein "Capital Brands") warrants this magic bullet® Combo Blender against defects in materials and workmanship for a period of one year from the date of delivery of the product to the consumer. This limited warranty is valid only in the country in which the product is purchased and comes with the product at no extra charge. However, shipping and processing fees for returns, replacements, and/or refunds will be incurred.

If a defect exists, and Capital Brands is obligated under this limited warranty, at its option, Capital Brands will either (1) repair the product at no charge, using new or refurbished replacement parts, (2) exchange the product with a product that is new or that has been remanufactured or refurbished from new or serviceable used parts and is at least functionally equivalent to the original product, or (3) refund the purchase price of the product. A replacement product assumes the remaining warranty of the original product. A repaired product has a one-year warranty from the date of repair. When a product or part is exchanged, any replacement item becomes your property, and the replaced item becomes Capital Brands' property. When a refund is given, your product becomes Capital Brands' property.

OBTAINING WARRANTY SERVICE

For limited warranty service, call our customer service department at 1 [800-523-5993](tel:800-523-5993) or contact us via email from our website at getmagicbullet.com click the Contact Us link, fill out and submit the customer contact form, and we will be glad to help you. When you contact our Customer Service Department, you will be asked to provide your name, address, telephone number, and proof of the original purchase (receipt) containing a description of the product(s), purchase date, deliver receipt of product, and the appropriate magic bullet® bar code(s). Before sending your product for limited warranty service, please make sure to keep a copy of all relevant documents for your files (receipt, etc.). It is always recommended to purchase product insurance and tracking services when

sending your product for service. Remember, shipping and processing fees will be incurred and are not covered by the one-year limited warranty.

EXCLUSIONS & LIMITATIONS

- This magic bullet® Combo Blender One-Year Limited Warranty applies only to magic bullet® Combo Blender products distributed by or for Capital Brands that can be identified by the magic bullet® Combo Blender trademark, trade name, logo, and bar code. The magic bullet® Combo
- Blender's One-Year Limited Warranty does not apply to any other products that may appear to be authentic but were not distributed/sold by Capital Brands.
- Normal wear and tear is not covered by this limited warranty. This limited warranty applies to consumer use only and is void when the product is used in a commercial or institutional setting.
- This limited warranty gives you specific legal rights, and you may also have other rights which vary from state to state. Capital Brands is not liable for any damage to products not covered by this warranty (e.g., cups, book, User Guide).

This limited warranty does not apply:

- **(a)** to damage caused by accident, abuse, misuse, or misapplication;
- **(b)** to damage caused by improper maintenance (including unauthorized parts service); (c) to a product or a part that has been modified in any way; (d) if any magic bullet® Combo Blender bar code or trademark has been removed or defaced; and or (e) if the product has been used with an adapter/converter.

In addition, proof of purchase and delivery must be demonstrated. Repair or replacement of the product (or, if repair or replacement is not feasible, a refund of the purchase price) is the consumer's exclusive remedy under this limited warranty. Capital Brands shall not be liable for any incidental or consequential damages for breach of this limited warranty or any implied warranty on this product. This limited warranty gives you specific legal rights, and you may also have other rights, which vary from state to state.

Capital Brands Distribution, LLC is not liable for any damage to products not covered by this warranty (e.g., cups, book, User Guide).

This limited warranty does not apply:

- **(a)** to damage caused by accident, abuse, misuse, or misapplication;
- **(b)** to damage caused by improper maintenance (including unauthorized parts service); (c) to a product or a part that has been modified in any way; (d) if any magic bullet® serial number, bar code, or trademark has been removed or defaced; and/or (e) if the product has been used with an adapter/converter or (f) commercial usage of this household product.

THIS LIMITED WARRANTY AND

THE REMEDIES SET FORTH ABOVE ARE EXCLUSIVE AND IN LIEU OF ALL OTHER WARRANTIES, REMEDIES AND CONDITIONS, WHETHER ORAL OR WRITTEN, EXPRESS OR IMPLIED. CAPITAL BRANDS DISTRIBUTION, LLC SPECIFICALLY DISCLAIMS

ANY AND ALL IMPLIED WARRANTIES, INCLUDING, WITHOUT LIMITATION, WARRANTIES OF MERCHANTABILITY AND FITNESS FOR A PARTICULAR PURPOSE.

IF CAPITAL BRANDS DISTRIBUTION, LLC CANNOT LAWFULLY DISCLAIM IMPLIED WARRANTIES UNDER THIS LIMITED WARRANTY, ALL SUCH WARRANTIES, INCLUDING WARRANTIES OF MERCHANTABILITY

AND FITNESS FOR A PARTICULAR PURPOSE ARE LIMITED IN DURATION TO THE DURATION OF THIS LIMITED WARRANTY. No magic bullet® Combo Blender reseller, agent, or employee is authorized to make any modification to this warranty.

CAPITAL BRANDS DISTRIBUTION, LLC IS NOT RESPONSIBLE FOR DIRECT, SPECIAL, INCIDENTAL OR CONSEQUENTIAL DAMAGES RESULTING FROM ANY BREACH OF WARRANTY OR CONDITION, OR UNDER ANY OTHER LEGAL THEORY, INCLUDING BUT NOT LIMITED TO LOST PROFITS, DOWNTIME, GOODWILL, DAMAGE TO OR REPLACEMENT OF EQUIPMENT AND PROPERTY. CAPITAL BRANDS DISTRIBUTION, LLC SPECIFICALLY DOES NOT REPRESENT THAT IT WILL BE ABLE TO REPAIR ANY PRODUCT UNDER THIS LIMITED WARRANTY.

Some states and provinces do not allow the exclusion or limitation of incidental or consequential damages or exclusions or limitations on the duration of implied warranties or conditions, so the above limitations or exclusions may not apply to you. This limited warranty gives you specific legal rights, and you may also have other rights that vary by state or province.

product registration

Please visit nutribullet.com/register or call 1 [800-523-5993](tel:800-523-5993) to register your new magic bullet® Combo Blender. You will be asked to enter the Serial Number* of your product, along with the purchase date and place of purchase. The information you submit is for product registration. Failure to complete product registration does not diminish your warranty rights.

The registration will enable us to contact you in the unlikely event of a product safety notification. By registering your product, you acknowledge that you have read and understood the instructions for use, and warnings set forth in the accompanying instructions.



You can find the serial number of your magic bullet® Combo Blender under or on the back of the Motor Base. For further assistance, call customer service at 1 [800-523-5993](tel:800-523-5993).

magic bullet® and the magic bullet logo are trademarks of CapBran Holdings, LLC, registered in the U.S.A. and worldwide.

Illustrations may differ from the actual product. We are constantly striving to improve our products, therefore the specifications contained herein are subject to change without notice.

240118_MBF50200

Frequently Asked Questions


- **Q: Can I blend hot ingredients in the blending cup?**

- A: No, it is not recommended to blend hot ingredients in the blending cup to prevent pressurization and potential injuries. Use the blending pitcher with the vented lid for such ingredients.

- **Q: How should I clean the Combo Blender?**

- A: Ensure the appliance is unplugged before cleaning. Wipe the motor base with a clean cloth and avoid immersing it in water. Refer to the instruction manual for detailed cleaning instructions.

Documents / Resources

	<p>magic bullet MBF50200 Combo Blender [pdf] User Guide MBF50200, F240118, MBF50200 Combo Blender, MBF50200, Combo Blender, Blender</p>
--	---

References

- [n nutribullet | Shop all Bullets and Blenders](#)
- [User Manual](#)

[Manuals+](#), [Privacy Policy](#)

This website is an independent publication and is neither affiliated with nor endorsed by any of the trademark owners. The "Bluetooth®" word mark and logos are registered trademarks owned by Bluetooth SIG, Inc. The "Wi-Fi®" word mark and logos are registered trademarks owned by the Wi-Fi Alliance. Any use of these marks on this website does not imply any affiliation with or endorsement.