

# magic bullet MBF50200 8oz Pitcher, Blending Cup, Simple Speed Dial User Guide


**magic  
bullet.**  
*combo blender*



user guide.

important safeguards.

When operating your magic bullet® Combo Blender, remember:  
**safety comes first. When using any electrical appliance, basic safety precautions should always be observed, including the following:**

 **warning!** To avoid the risk of serious injury, death, property damage, or damage to your device carefully read all instructions in this User Guide before operating your magic bullet® Combo Blender.

If you let anyone else use your magic bullet® Combo Blender, make sure that they understand the health and safety information in this User Guide, as well as any additional safety or usage instructions provided. Each person using a device should completely read the User Guide to become familiar with the safe operation of the unit.

**Save these instructions!**

**for household use only**

**READ ALL INSTRUCTIONS CAREFULLY AND THOROUGHLY BEFORE OPERATING.**

personal safety:

Failure to follow all instructions regarding the use of your magic bullet® Combo Blender may result in serious personal injury, death, or property damage. Be aware of possible hazards when using or storing your magic bullet® Combo Blender.



**warning! EXTREME CAUTION SHOULD BE EXERCISED WHEN USING HOT, WARM, OR CARBONATED INGREDIENTS IN THE PITCHER. ALWAYS MAKE SURE THE VENTED PITCHER LID IS SECURED ONTO THE PITCHER BEFORE OPERATING THE BLENDER WITH THE PITCHER ATTACHED.**



**warning! NEVER BLEND HOT, WARM, OR CARBONATED INGREDIENTS IN THE BLENDING CUP AS IT MAY PRESSURISE THE CONTENTS AND ERUPT UPON OPENING, CAUSING SERIOUS BODILY INJURIES OR DAMAGE.**

- Do not use the magic bullet® Combo Blender for anything other than its intended purpose.
- Do not leave or place non-food items e.g. spoon in any of the attachments while blending. Doing so may damage the unit or crack or shatter the attachment, resulting in bodily injury or property damage.
- Close supervision is necessary when any appliance is used by or near children to ensure they do not play with the appliance. Keep cord out of reach of children.
- This appliance is not intended for use by persons (including children) with reduced physical, sensory, or mental capabilities, or lack of experience and knowledge, unless they are closely supervised and instructed concerning use of the appliance by a person responsible for their safety.
- **NEVER LEAVE THE MAGIC BULLET® COMBO BLENDER UNATTENDED WHILE IT IS IN USE.**
- Do not place or operate your magic bullet® Combo Blender on uneven or unstable surfaces.
- The risk of fire, shock or damage to your magic bullet® Combo Blender during cleaning can be reduced by taking the following precautions:
  - Always ensure your magic bullet® Combo Blender is powered off and unplugged, and that the blades have completely stopped rotating before removing or cleaning the unit.
  - Only clean the exterior of your motor base.
  - Clean your device with a dry cloth.
- Do not attempt to clean the Motor Base by immersing it in water or other cleaning liquids. Only gently wipe and dry the Motor Base with a clean cloth.
- Do not place or operate your magic bullet® Combo Blender on or near a hot gas or electric burner, or in a heated oven.
- **NEVER** wash your magic bullet® parts or accessories using the sanitize or heat cycle of your dishwasher. Doing so can warp the part, which can create hazardous conditions during use that may result in bodily injury or property damage.
- **NEVER** place any magic bullet® parts or accessories in the freezer or use them as storage containers in the freezer.
- Remove and safely discard any packaging material or promotional labels before using the appliance for the first time.
- Do not operate if any of the parts and accessories are damaged in any manner which may impair proper function or create a safety hazard.

Contact Customer Service for assistance at: **AU: 1300 285 538 / NZ: 0800 232 633.**

- Do not use parts or accessories from other manufacturers or different models of magic bullet® products. Use of parts and accessories **NOT** provided by magic bullet® may damage your unit or cause serious injury.
- Do not attempt to defeat any safety interlock mechanisms.
- **DO NOT USE OUTDOORS.**
- **ALWAYS UNPLUG THE MAGIC BULLET® COMBO BLENDER WHEN NOT IN USE.**

blending with magic bullet® cups:

**NEVER USE THE MAGIC BULLET® BLENDING CUPS TO BLEND HOT OR WARM INGREDIENTS.**

– Starting with hot or warm ingredients allows more heat and pressure to build up when blending. This can cause the Cup to separate from the Blade, potentially expelling hot ingredients and exposing the blade, both of which can cause injuries.

– Only blend room-temperature or refrigerated ingredients (70°F/21°C or cooler) inside the Cup even if the recipe used calls for a temperature warmer than room-temperature. After blending, you may transfer the mixture to a stovetop pot to heat.

- **DO NOT BLEND INGREDIENTS IN THE MAGIC BULLET® CUP FOR CONSECUTIVE BLENDING CYCLES.**
  - Blending causes ingredients to heat up, which builds pressure in the Cup over time. Multiple blending cycles may cause the Cup to pressurise and separate from the blade, exposing the blade or expelling heated ingredients – both of which can cause injury.
  - After 2 consecutive blends cycles, wait at least 10 to 15 minutes before blending another cycle.
  - Always untwist the Blade from the Blending Cup slowly, carefully, and pointed away from your body to release built-up pressure.
- **DO NOT BLEND ANYTHING CARBONATED OR EFFERVESCENT – NO BUBBLES – IN THE MAGIC BULLET® CUP.**
  - Carbonated and effervescent ingredients (soda, carbonated water, baking powder, baking soda, yeast, some batters, cake mix, dry ice, or other ingredients that become bubbly) release gases that increase pressure within the Cup. Pressure from released gases can cause a sealed magic bullet® Cup to separate, resulting in possible injury and/or property damage.

**note: Some protein powders include effervescent ingredients. Always check the listed ingredients before adding.**
- **DO NOT OVERFILL THE MAGIC BULLET® CUP.**
  - Filling above the MAX line can result in leakage. The cyclonic action of the magic bullet® requires an adequate amount of space to extract effectively. Exceeding the MAX line can result in leakage, and may create a dangerous pressurization which can cause the Cup and Cross Blade assembly to separate, resulting in possible injury and/or property damage.
- **DO NOT LEAVE BLENDED FOODS INSIDE A SEALED CUP.**

Blended mixtures can spoil and ferment, increasing pressure when left in the Cup.


  - Use the To-Go Lid or transfer to a vented container for storage after blending.

magic bullet® cup caution:



 **warning! NEVER ATTEMPT TO OPEN A SEALED MAGIC BULLET® CUP IF IT FEELS HOT OR WARM TO THE TOUCH; THE CONTENTS MAY BE HEATED AND PRESSURISED, CAUSING THE CUP TO VIOLENTLY SEPARATE WHEN OPENED, WHICH CAN RESULT IN BODILY INJURY AND BURNS. IF THE CUP FEELS HOT OR WARM, FOLLOW THESE STEPS:**

1. Cease blending immediately and unplug the unit from the outlet.
2. **LEAVE ALONE, DO NOT OPEN.** Leave the Cup where it is and do not touch it or allow others to touch it. Do not attempt to continue blending.
3. Do not attempt to disengage the Cup from the Motor Base. **DO NOT** attempt to separate the Cup from the Cross Blade by heat or force, or by prying apart the components, which may crack or shatter the Cup and result in bodily injury.
4. Allow the Cup to cool for at least 30 minutes.
5. After 30 minutes, check if the Cup is completely cooled. If still warm, allow to cool more.
6. If cool to the touch, slowly disengage the Cup from the Motor Base.
7. With the Cup pointed away from your face and body, cover the blade with a towel and slowly untwist the Cross Blade from the Cup to gently release any residual pressure.

 **warning! NEVER ATTEMPT TO SEPARATE THE CUP FROM THE CROSS BLADE BY FORCING OR PRYING APART THE COMPONENTS. THIS MAY CRACK OR SHATTER THE CUP, RESULTING IN BODILY INJURY. IF YOU ARE UNABLE TO UNTWIST THE CROSS BLADE FROM THE CUP, CONTACT CUSTOMER SERVICE. NEVER LEAVE THE CONTENTS SITTING INSIDE THE SEALED CUP FOR A PROLONGED PERIOD OF TIME. THE CONTENTS MAY FERMENT, CAUSING THE CUP TO VIOLENTLY SEPARATE FROM THE BLADE, WHICH MAY RESULT IN BODILY INJURY OR PROPERTY DAMAGE. DISPOSE OF THE CUP AND CONTENTS PROPERLY SO YOU OR OTHERS WILL NOT BE INJURED IF FERMENTATION CAUSES THE CUP AND BLADE TO SEPARATE.**

cup safety:

Proper Cup use is important for the safe operation of your magic bullet®. Using the Cup inconsistent with these instructions may result in bodily injury, property damage, or damage to your unit. Remember, **NEVER** blend hot, warm, or carbonated ingredients or liquid in the magic bullet® Cup!

- **ALWAYS** securely tighten the Cross Blade to the Cup to prevent leakage.
- Always make sure the Cup is securely locked onto the Motor Base before blending. The motor will not turn on unless the Cup is set in the locked position.
- Do not overfill or exceed the MAX line. Exceeding the MAX line can result in leakage.
- Do not remove the Cup while the unit is in operation.
- **NEVER** operate your magic bullet® Cup when empty.
- **DO NOT** crush ice or overfill the Cup with ice. Your magic bullet® Combo Blender is not intended to be used as

an ice crusher. Overfilling the Cup with ice may cause ice to wedge into the blade, inhibiting blades from turning, and overheating the motor.

- Always use sufficient liquid ingredients when blending.
- Cups, To-Go Lids, and other magic bullet® parts or accessories are **NOT** microwave-safe.
- Do not use the Blade as a storage lid, as it is not vented. Your blended mixture can ferment, increasing pressure within the Cup, which may cause separation that can lead to bodily injury and property damage. Use the To-Go Lid or transfer to a vented container for storage after blending.
- Do not leave any non-food items, including utensils, inside the Cup when blending.
- Do not blend stone fruit in this appliance unless pits/seeds have been removed. Fruit pits may damage the Cup, potentially resulting in shattering and personal injury. In addition, apple seeds and the pits of cherries, plums, peaches, and apricots contain a chemical known to release cyanide into the body when ingested.
- Periodically inspect your magic bullet® Cup for damage or wear that may impair proper function or create a safety hazard.
- Do not use the Cup if you detect cracking, cloudiness, or other damage. You may purchase new Cups at [bulletbrands.com.au](http://bulletbrands.com.au) / [bulletbrands.co.nz](http://bulletbrands.co.nz) or by contacting Customer Service.
- Do not use aftermarket replacement parts for your magic bullet® Combo Blender. Aftermarket replacement parts may result in damage to your magic bullet® Combo Blender or create safety hazards resulting in bodily injury or damage. Only order replacement parts from [bulletbrands.com.au](http://bulletbrands.com.au) / [bulletbrands.co.nz](http://bulletbrands.co.nz) or by contacting Customer Service at: **AU: 1300 285 538 / NZ: 0800 232 633**, please specify the model for parts that are compatible with your unit.

using the blending pitcher:



**warning! CAUTION MUST BE OBSERVED IF HOT LIQUID IS POURED INTO THE BLENDER AS IT CAN BE EJECTED OUT OF THE APPLIANCE DUE TO A SUDDEN STEAMING. ONLY USE THE BLENDING PITCHER WITH THE LID ATTACHED TO BLEND HOT, WARM, OR CARBONATED INGREDIENTS**

**NEVER BLEND HOT OR WARM INGREDIENTS INSIDE THE MAGIC BULLET® CUP. USING THE CUP TO BLEND HOT OR WARM INGREDIENTS MAY CAUSE THE CUP TO SEPARATE, EXPELLING HOT CONTENTS OR EXPOSING THE BLADE, BOTH OF WHICH CAN CAUSE BODILY INJURY AND PROPERTY DAMAGE.**

- **ALWAYS** install the vented Pitcher Lid to the Blending Pitcher with the Cap twisted closed when starting a blending cycle to prevent ingredients from splashing out of the blender. This is especially important when blending hot ingredients as to prevent risk of burns, bodily injury, or property damage.
- After blending hot ingredients or liquids, exercise caution when opening the Pitcher Lid; hot steam or the splattering of hot ingredients may occur.
- Do not overfill the Blending Pitcher beyond the MAX line.



**warning! PRESSURE GENERATED FROM BLENDING HOT LIQUIDS MAY PUSH THE LID OFF THE**

**PITCHER. TO PREVENT POSSIBLE BURN INJURIES, DO NOT FILL THE PITCHER BEYOND THE MAX LINE.**



**warning! TO INCORPORATE INGREDIENTS DURING BLENDING, OPEN THE VENTED CAP AND CAREFULLY POUR OR DROP INGREDIENTS INTO THE MIXTURE. WHEN ADDING INGREDIENTS TO ALREADY HOT INGREDIENTS OR LIQUIDS, BE MINDFUL OF ESCAPING HOT STEAM OR THE SPLATTERING OF HOT INGREDIENTS.**

- When using manual speeds, start blending on the **LOW** setting. Once ingredients are integrated, adjust speed as needed.

blending pitcher safety:

Proper use of the Blending Pitcher is important for the safe operation of your magic bullet® Combo Blender. Using the Blending Pitcher inconsistent with these instructions may result in bodily injury, property damage, or damage to your unit.

- Always operate the Blender Pitcher with the Pitcher Lid securely locked into place.
- Before blending, check that the vent slots on the Pitcher Lid are clear and unobstructed. Clogged or obstructed vent slots can pressurise contents, potentially expelling the Lid from the Blending Pitcher. This can result in personal injury and property damage from escaping steam or hot ingredients.
- For recipes that use hot or warm ingredients, only use the Pitcher. **NEVER** use the Cup to blend hot or warm ingredients. Once the ingredients are well mixed, twist open the Vented Lid Cap and carefully pour or drop additional ingredients into the blended mixture. If the blended mixture is hot or warm, use caution and open the vented lid cap slowly, being mindful of escaping hot steam or the splattering of hot ingredients. Always reinstall the Vented Lid Cap when you are finished adding ingredients.
- Do not place hands or utensils inside the Blending Pitcher. This can result in severe bodily injury or property damage.
- **NEVER USE** spatulas, spoons, or other tools that could make contact with the spinning blade during use. Doing so can damage the unit, shatter the Blending Pitcher, and cause severe bodily injury or property damage.

general blade safety:



**warning! BLADES ARE SHARP!**

**CARE SHALL BE TAKEN WHEN HANDLING THE SHARP CUTTING BLADES, EMPTYING THE PITCHER AND CUP AND DURING CLEANING. HANDLE WITH CARE TO AVOID BODILY INJURY. NON-FOOD ITEMS OR HARD INGREDIENTS MAY DAMAGE THE BLADES OF YOUR MAGIC BULLET® COMBO BLENDER. ROUTINELY INSPECT THE BLADES AND DISCONTINUE USE IF DAMAGED. CONTINUED USE WITH DAMAGED BLADES OR USE INCONSISTENT WITH THESE INSTRUCTIONS MAY RESULT IN BODILY INJURY, PROPERTY DAMAGE, OR DAMAGE TO YOUR UNIT. DO NOT TOUCH THE SHARP EDGES OF THE BLADES. TO AVOID LACERATION INJURY, DO NOT HANDLE OR TOUCH ANY SHARP COMPONENTS OF THE BLADE.**

**NEVER STORE EXPOSED BLADES ON THE MOTOR BASE. EXPOSED BLADES CAN PRESENT THE HAZARD OF LACERATION AND SEVERE PERSONAL INJURY. ALWAYS COVER EXPOSED BLADES WITH THE CUP OR PITCHER.**

- Do not remove the Cup or Blending Pitcher until blades have come to a complete stop. Removing before the

blades come to a complete stop can cause damage to the attachments or unit.

- Always **POWER OFF** and **UNPLUG** the unit and wait until the Blade comes to a complete stop before assembling, disassembling, changing accessories, or cleaning.
- **ALWAYS** securely tighten the Cross Blade to the Cup or Blending Pitcher to prevent leakage.
- **DO NOT** attempt to disengage the Cup or Blending Pitcher from the Motor Base if it starts to leak during blending. If a leak occurs, power off or unplug the unit and allow the motor to come to a complete stop before removing the Blending Pitcher. This will prevent risk of separation or exposure to the spinning blade.
- **DO NOT** crush ice or overfill the Pitcher with ice. Your magic bullet® Combo Blender is not intended to be used as an ice crusher. Overfilling the Pitcher with ice may cause ice to wedge into the blade, inhibiting blades from turning, and overheating the motor.
- **DO NOT** blend stone fruit in this appliance unless pits/seeds have been removed. Fruit pits may damage the Cup, potentially resulting in shattering and personal injury. In addition, apple seeds and the pits of cherries, plums, peaches, and apricots contain a chemical known to release cyanide into the body when ingested.
- Do not overload the Cup or Blending Pitcher as this may prevent the Blade from spinning. If this occurs, turn off the unit, empty some of the contents, reattach, and resume.
- Do not attempt to grind dry ingredients such as grains, cereal, or coffee, as this may damage the motor and/or the Blade. Use of dry ingredients may cause the motor to overheat.
- **AVOID CONTACT WITH MOVING PARTS!** Keep hands and utensils out of and away from the Blade to reduce the risk of severe personal injury or damage to the unit.
- **NEVER** place the Blade or any magic bullet® part or accessory on the bottom rack of the dishwasher or use the heat/sanitize cycle while cleaning components in the dishwasher.
- Periodically inspect your Cross Blade. If the blades do not rotate freely or are damaged, immediately discontinue use and contact Customer Service. For optimal performance, we recommend replacing the Blade every 6 months, or as needed, depending on use.
- Use of incompatible parts or aftermarket parts may result in damage to your magic bullet® Combo Blender or create safety hazards that may cause personal injury or damage. When ordering replacement parts, always use genuine magic bullet® parts and accessories from [bulletbrands.com.au](http://bulletbrands.com.au) / [bulletbrands.co.nz](http://bulletbrands.co.nz) or contact Customer Service at: **AU: 1300 285 538 / NZ: 0800 232 633**.

product safety:



**warning! NEVER BLEND HOT, WARM, OR CARBONATED INGREDIENTS IN THE MAGIC BULLET® CUP! FRICTION FROM ROTATING BLADES CAN GENERATE HEAT INSIDE THE CUP THAT MAY CAUSE THE CUP AND BLADE TO SEPARATE UPON OPENING OR REMOVING FROM THE POWER BASE. THIS MAY RESULT IN THE EXPULSION OF HOT LIQUIDS FROM THE CUP OR EXPOSURE TO THE BLADES, BOTH OF WHICH CAN CAUSE SERIOUS INJURY OR PROPERTY DAMAGE. ONLY USE THE BLENDING PITCHER AND VENTED PITCHER LID TO BLEND HOT, WARM, OR CARBONATED INGREDIENTS.**

- Do not attempt to disengage the Cup from the Motor Base if the Cup starts to leak during blending. Leakage can indicate that the Cup is about to separate from the blade, which can expose the Blade and cause laceration injuries. If you notice leaking, unplug the unit immediately and allow the motor to come to a complete stop before removing the Cup from the Motor Base.

electrical safety:

Modification, improper use, and failure to follow the instructions for proper setup, use, and care of your magic bullet® Combo Blender can increase the risk of serious personal injury, death, or property damage.

- Do not use the unit in countries or locations with different electrical specifications or plug types.
- Do not use the unit with a voltage converter device, as it may cause electrical shorting, fire, or electric shock, resulting in personal injury or product damage.
- Do not use the unit in an area that is wet, or anywhere it could become wet.

maintenance:

**DO NOT IMMERSE MOTOR BASE IN WATER OR OTHER LIQUIDS. IN THE EVENT OF SPILL, UNPLUG UNIT AND CHECK THE UNDERSIDE. IF LIQUID OR FOOD IS EXITING THE VENTS, DO NOT USE UNTIL INSPECTED BY A CERTIFIED ELECTRICIAN AS THE MOTOR BASE HAS LIKELY BEEN COVERED IN FOOD, POTENTIALLY GIVING USER AN ELECTRIC SHOCK.**

#### **HOW TO CLEAN UP A SPILL.**

**STEP 1:** The most important thing is to UNPLUG the motor base before cleaning!

**STEP 2:** Make sure the blade is not attached to the motor base.

**STEP 3:** Use a damp cloth to wipe down the inside and outside of the Motor Base.

- In order to avoid a hazard due to inadvertent resetting of the thermal cut-out, this appliance must not be supplied through an external switching device, such as a timer, or connected to a circuit that is regularly switched on and off by the utility.
- Do not attempt to plug the unit into an electrical outlet with wet hands.
- Do not use the cord, plug, or Motor Base if it has been immersed in water or other liquids. Any significant spillage on, under, or around the Motor Base should be cleaned and dried before plugging in and using the unit.
- Do not modify the electrical cord in any way.
- If the supply cord is damaged, it must be replaced by the manufacturer, its service agent or similarly qualified persons in order to avoid a hazard.
- Do not operate any unit with a damaged electrical cord or plug. The electrical cord and plug are not suitable for replacement. If damaged, the appliance should be replaced. Contact Customer Service for assistance at: **AU: 1300 285 538 / NZ: 0800 232 633.**
- Do not allow or place the electrical cord near or touching any hot surfaces, heat source, or flame, including the stove.
- Do not allow the electrical cord to hang over the edge of a table or counter.
- Do not pull, twist, or damage the power cord.
- Overloading the unit may overheat the motor and engage the thermal breaker. If the internal thermal breaker shuts off the motor, unplug the Motor Base and let it cool for an hour before attempting to use it again. The thermal breaker will reset when the unit is unplugged and the thermal breaker cools down.
- Always **UNPLUG** your magic bullet® Combo Blender when it is not in use, and when assembling, disassembling, changing accessories, or cleaning.
- **NEVER** pull from the power cord to unplug. To unplug, grasp the plug and pull from the outlet.
- Use of incompatible parts or aftermarket parts may result in damage to your magic bullet® Combo Blender or create safety hazards that may cause personal injury or damage. When ordering replacement parts, always use genuine magic bullet® parts and accessories from [bulletbrands.com.au](http://bulletbrands.com.au) / [bulletbrands.co.nz](http://bulletbrands.co.nz) or contact Customer Service at: **AU: 1300 285 538 / NZ: 0800 232 633.**



- Do not place any magic bullet® part or accessory in a microwave, conventional oven, air fryer, or stovetop pot, or immerse in boiling water, as this will damage the part.
- Do not place any magic bullet® parts or accessories on the bottom rack of your dishwasher or use the heat/sanitize cycle.
- Periodically inspect your magic bullet® Cross Blade. If the blades do not rotate freely or if the gasket is missing or damaged, immediately discontinue use and contact Customer Service.

ventilation:

- **NEVER** obstruct the ventilation openings on the bottom of the Motor Base of your magic bullet® Combo Blender. Openings on the bottom of the Motor Base should be free of dust and lint and never obstructed. Obstructions to the ventilation openings may cause the motor to overheat, presenting a fire hazard that may cause serious personal injury, death, or property damage.
- **ALWAYS** operate the magic bullet® Combo Blender on a level surface, leaving unobstructed space beneath and around the Motor Base to permit proper air circulation. Slots on the bottom of the Motor Base are provided for ventilation to ensure reliable operation and to prevent the motor from overheating.
- **NEVER** place your magic bullet® Combo Blender on top of flammable materials such as newspapers, tablecloths, napkins, dishtowels, place mats, or other similar materials.

medical safety:

- Always consult your physician regarding health and nutrition concerns and advice. The information contained in this User Guide are general suggestions and ideas, and are not meant to replace the advice of your physician.
- **ALWAYS** follow recommended maintenance and care instructions in the User Guide. **NEVER** operate your magic bullet® Combo Blender with damaged components. If your magic bullet® malfunctions or is damaged in any way, immediately discontinue use and contact Customer Service at: **AU: 1300 285 538 / NZ: 0800 232 633**. If you have any comments, questions, or concerns, please go to [bulletbrands.com.au](http://bulletbrands.com.au) / [bulletbrands.co.nz](http://bulletbrands.co.nz) or call Customer Service.

**! Save these instructions!**



**thank you** for purchasing the magic bullet® Combo Blender.

what's included.



**motor base**



**1.5 L pitcher**



**pitcher lid and removable vented lid cap**



**cross blade**



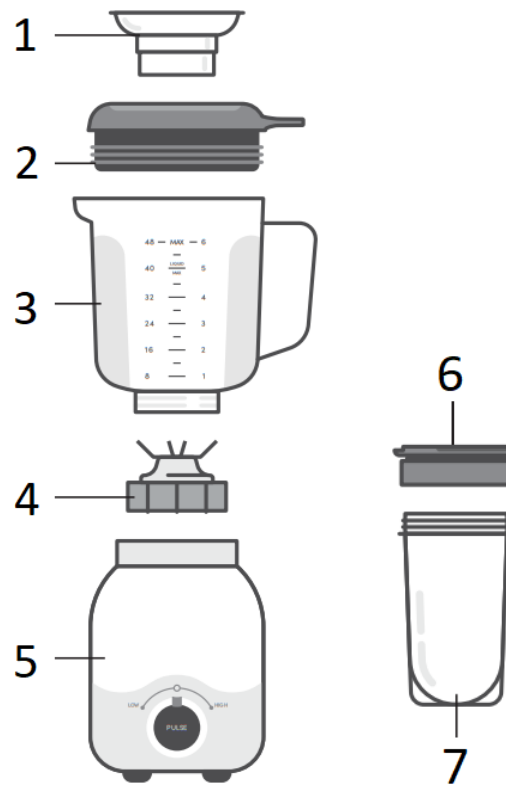
**450 ml single-serve cup**



**to-go lid**

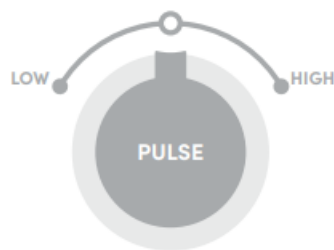
Product configurations may vary. To see our full list of magic bullet® accessories, please visit [bulletbrands.com.au](http://bulletbrands.com.au) / [bulletbrands.co.nz](http://bulletbrands.co.nz)

assembly guide.



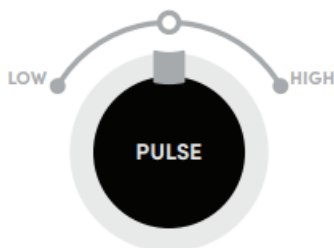
1. removable vented lid cap
2. pitcher lid
3. pitcher
4. cross blade
5. motor base
6. to-go lid
7. single-serve cup

user interface.



### home

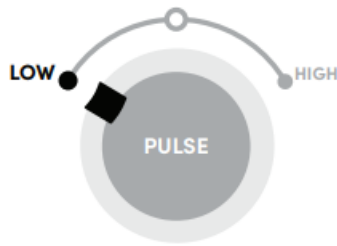
The dial is in the center position. The blender is not running.



### pulse

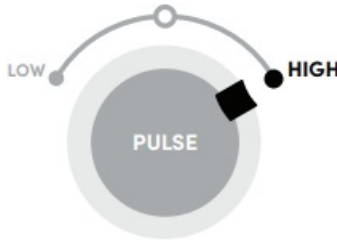
With the dial in the center position, press and hold the **PULSE** button. To stop blending, release the **PULSE**

button.



### low

Turn the dial to the left to start a preset low-speed blend cycle.  
Turn the dial back to **HOME** when finished.



### high

Turn the dial to the right to start a preset high-speed blend cycle. Turn the dial back to **HOME** when finished.

using the single-serve blending cup.



**warning! NEVER blend hot, warm, or carbonated ingredients in the magic bullet® Cup!** When using a Cup attachment, after two consecutive blends cycles, wait 10 to 15 minutes before blending another cycle. Never attempt to open the Cup if it is warm to the touch. Allow the Cup and its contents to cool for at least 30 minutes before attempting to open.



### warning!

Never blend hot, warm, or carbonated ingredients in any sealed magic bullet® Cup!

Only use the Blending Pitcher to blend hot, warm, or carbonated ingredients.



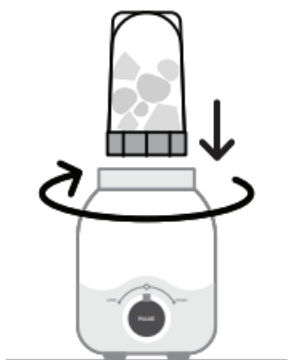
**1** Place the **Motor Base** on a clean, dry, level surface.



**2** Add ingredients to the **magic bullet® Cup**. **DO NOT** exceed the **MAX** line!



**3** Twist on the **Cross Blade** until the **Cup** and **Blade** are firmly sealed.



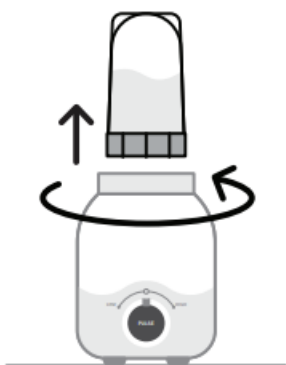
**4** Flip the **Cup** upside down and mount it onto the **Motor Base**. Gently twist it clockwise to lock it into place. The motor will not run unless the **Cup** / **Blade** assembly is properly attached.



**5** Run the desired blending program: twist the **Power Control Knob** to **LOW** or **HIGH**, or keep in the **HOME** position and press the dial button to **PULSE**.



6 Twist the **Power Control Knob** to **HOME** once you've finished blending.



7 Once the blades have stopped moving, twist the **Cup** counterclockwise to unlock and remove it from the **Motor Base**.



8 Turn the sealed **Cup** right side up (**Cross Blade** on top), and un-twist the **Cross Blade**. Enjoy your blend from the **Cup**, or transfer to another vessel to serve.

using the blending pitcher.



**warning!**

Only operate the Blending Pitcher with the Pitcher Lid securely attached!

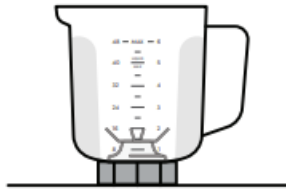
Never turn the power on while using the Pitcher without the Vented Lid Cap inserted and locked into place!

Always use extreme care and attention when blending hot liquids or hot ingredients!

Always use caution when opening the Pitcher Lid after blending hot ingredients!



1 Place the **Motor Base** on a clean, dry, level surface.



2 Inspect the **Pitcher** and ensure the **Pitcher** and **Blade** are secured. To tighten the **Blade**, twist it counter-clockwise onto the bottom of the **Pitcher**. To loosen/release the **Blade**, twist it clockwise until it detaches from the **Pitcher**.

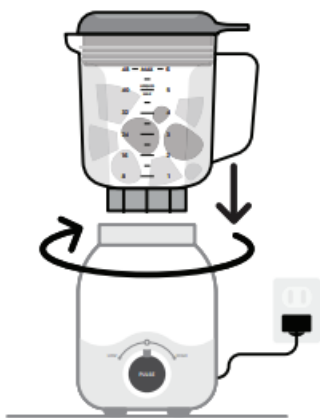


3 Add ingredients to the **Pitcher**.

 **warning! DO NOT** exceed the **MAX** line!



4 Place the **Lid** on top of the **Pitcher** and press down firmly to snap into place. Place the **Vented Lid Cap** over the **Lid** opening, then press down and twist to lock it in place.



**5** Place the **Pitcher** upright onto the **Motor Base** so the **Blade** meets the **Motor Base** and gently twist clockwise to lock it into place. You will feel a “click” when the blender is secured.

Plug the power cord into an outlet.



**6** Run the desired blending program: twist the **Power Control Knob** to **LOW** or **HIGH** or keep in the **HOME** position and press the dial button to **PULSE**.

If the blender won't run, double check to ensure the **Pitcher** is locked in place.

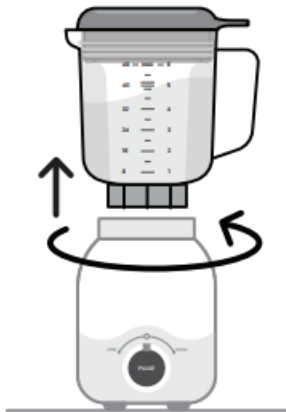


**7** If using the **HIGH** or **LOW** blending cycle, return the **Power Control Knob** to the **HOME** position after the cycle completes. If ingredients require further blending, return the **Power Control Knob** to the **HOME** position first before beginning the next cycle of blending (**HIGH**, **LOW**, or **PULSE**).





**8** Twist the **Knob** to **HOME** once you're finished blending.



**9** Twist the **Pitcher** counterclockwise and lift off the **Motor Base**.

 **warning!** Blades are sharp. Never insert your hands into the **Pitcher**.



**10** Lift the lid tab with your thumb to loosen and remove the **Lid**. Transfer contents to your desired serving vessel and enjoy!

maintaining the magic bullet® Combo Blender.

Cleaning the magic bullet® Combo Blender is easy. All components, except the **Motor Base**, are dishwasher safe.

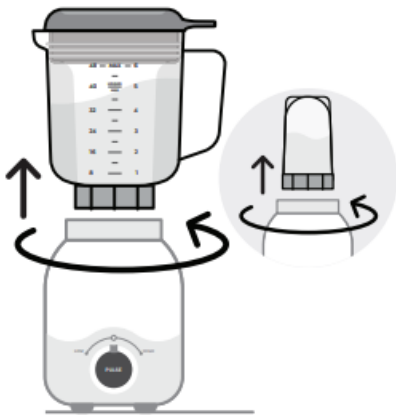
 **warning!**

Blades are sharp! Handle with care.

Never submerge the Motor Base! Keep it away from water and other liquids.



**1 POWER OFF** and **UNPLUG** the **Motor Base**.



**2 Separate the Cup or Pitcher** from the **Motor Base**.



**3 If using the Pitcher:** lift the lid tab with your thumb to loosen and remove the **Lid**.




**4 Remove / transfer** any remaining ingredients from the **Pitcher** or **Blending Cup**.



5 Twist off the **Blade** from the **Cup** or **Pitcher**.




6 The **Cup**, **Pitcher**, and accessories can be hand-washed with soap and water or cleaned in the top rack of the dishwasher.

 **warning! NEVER** use the sanitize cycle for risk of warping the accessories.





7 Clean the **Motor Base** by wiping the surface with a damp sponge or cloth.

 **warning! NEVER** submerge the **Motor Base** in any liquid **OR** remove pieces from the **Motor Base**.



8 Use a small, dry brush to scrub the actuator clean.

 **warning! NEVER** try to clean the **Motor Base** while it is plugged in.

 **warning!** If motor base gets wet do not use until inspected by a certified electrician as the motor has been

covered in food, potentially giving user an electric shock.

storing your blender.

Store all components of the unit together in a safe place where they will not be damaged and won't cause harm. Never leave the blades exposed during storage.

replacement parts.

Order new and replacement parts at [bulletbrands.com.au](http://bulletbrands.com.au) / [bulletbrands.co.nz](http://bulletbrands.co.nz) or call customer service at **AU: 1300 285 538 / NZ: 0800 232 633**.

Use only genuine magic bullet® parts and accessories specifically designed for your magic bullet® Combo Blender. Aftermarket parts are not made to magic bullet® specifications and may damage your unit or cause serious bodily injury or damage.



one (1) year limited replacement warranty statement.

**If your product becomes defective due to faulty material or workmanship within a period of 1 year from the date of purchase, we warrant to do the following:**

- **For New Zealand Consumers:** We will replace the product with a new product, free of charge, or repair the product at our cost, at our discretion.
- **For Australian Consumers:** Our goods come with guarantees that cannot be excluded under the Australian Consumer Law. You are entitled to a replacement or refund for a major failure and for compensation for any other reasonably foreseeable loss or damage. You are also entitled to have the goods repaired or replaced if the goods fail to be of acceptable quality and the failure does not amount to a major failure.

**YOUR WARRANTY IS SUBJECT TO THE FOLLOWING CONDITIONS:**

- **DO NOT** operate the appliance with a damaged plug or cord, or if the unit has been dropped, damaged or dropped in water. To avoid the risk of electric shock, do not disassemble or attempt to repair the appliance on your own. If the supply cord is damaged, it must be replaced by a qualified electrician in order to avoid a hazard. Incorrect reassembly or repair can cause a risk of electric shock or injury to persons when the appliance is used.
- The item has not been misused, abused, neglected, altered, modified or repaired by anyone.
- The item has been subjected to fair wear and tear.
- The item has not been used for trade, professional or hire purposes.
- The item has not sustained damage through foreign objects, substances or accident.

**YOUR WARRANTY DOES NOT COVER:**

- Components that are subject to natural wear and tear caused by normal use in accordance with operating instructions.
- Unauthorised/improper maintenance/handling or overload is excluded from this warranty.

- For guarantee claims, you will need to submit a proof of purchase in the form of a valid receipt that displays date and place of purchase.

**This warranty does not replace but is in addition to your statutory rights.**

**This warranty does not apply to accessories supplied with the item.**

**This warranty applies only to the original purchaser and may not be transferred.**

**Replacement items will be covered by the limited warranty for the balance of the warranty period from the date of the original purchase.**

**PLEASE NOTE:**

Only the defective product or parts returned to place of purchase will be replaced under this warranty.



**NEW ZEALAND**

PO Box 100-707  
NSMC  
Auckland 0745  
0800 232633  
[bulletbrands.co.nz](http://bulletbrands.co.nz)

**AUSTRALIA**

PO Box 574  
South Morang  
Victoria 3752  
1300 285538  
[bulletbrands.com.au](http://bulletbrands.com.au)

nutribullet® is a registered trademark of CapBran Holdings, LLC.  
Copyright © 2023 CapBran Holdings, LLC. All rights reserved.  
Los Angeles, CA 90025, USA. Made in China.


**Capital Brands Distribution, LLC | All rights reserved.**

magic bullet® and the magic bullet logo are trademarks of CapBran Holdings, LLC, registered in the U.S.A. and worldwide.

Illustrations may differ from the actual product. We are constantly striving to improve our products, therefore the specifications contained herein are subject to change without notice.

**240530\_MBF07200AK**

Documents / Resources

	<p><a href="#">magic bullet MBF50200 8oz Pitcher,Blending Cup,Simple Speed Dial</a> [pdf] User Guide MBF50200 8oz Pitcher Blending Cup Simple Speed Dial, MBF50200, 8oz Pitcher Blending Cup Simple Speed Dial, Blending Cup Simple Speed Dial, Cup Simple Speed Dial, Simple Speed Dial, Speed Dial, Dial</p>
---	--

References

- [n NutriBullet New Zealand |Shop Blenders, Food Prep & Cooking Appliances](#)
- [n NutriBullet Australia | Shop Blenders, Food Prep & Cooking Appliances](#)
- [User Manual](#)