

**magic
bullet.**

**MBF04 Multi
Function High
Speed Blender**



magic bullet MBF04 Multi Function High Speed Blender User Guide

[Home](#) » [Magic Bullet](#) » magic bullet MBF04 Multi Function High Speed Blender User Guide 

Contents

- [1 magic bullet MBF04 Multi Function High Speed Blender](#)
- [2 What's included](#)
- [3 Assembly guide](#)
- [4 User interface](#)
- [5 Soring](#)
- [6 Replacement parts](#)
- [7 Documents / Resources](#)
 - [7.1 References](#)
- [8 Related Posts](#)

**magic
bullet.**

magic bullet MBF04 Multi Function High Speed Blender

**important safeguards.**

When operating your magic bullet® Blender, remember: safety comes first. When using any electrical appliance, basic safety precautions should always be observed, including the following:

warning! To avoid the risk of serious injury, death, property damage, or damage to your device, carefully read all instructions in this User Guide before operating your magic bullet® Blender.

If you let anyone else use your magic bullet®, make sure that they understand the health and safety information in this User Guide, as well as any additional safety or usage instructions provided. Each person using a device should read the User Guide in its entirety to become familiar with the safe operation of the unit.

Save these instructions! for household use only

READ ALL INSTRUCTIONS CAREFULLY AND THOROUGHLY BEFORE OPERATING.

General use and safety:

Failure to follow all instructions regarding the use of your magic bullet® Blender may result in serious personal injury, death, or property damage. Be aware of possible hazards when using or storing your magic bullet® Blender. warning! EXTREME CAUTION SHOULD BE EXERCISED WHEN USING HOT, WARM, OR CARBONATED INGREDIENTS IN THE PITCHER. ALWAYS MAKE SURE THE VENTED PITCHER LID IS SECURED ONTO THE PITCHER BEFORE OPERATING THE BLENDER WITH THE PITCHER ATTACHED.

warning! NEVER BLEND HOT, WARM, OR CARBONATED INGREDIENTS IN THE BLENDING CUP! FRICTION FROM THE ROTATING BLADES CAN CAUSE CONTENTS TO HEAT AND PRESSURIZE, WHICH MAY CAUSE THE CUP TO SEPARATE UPON OPENING OR REMOVAL FROM THE MOTOR BASE EXPELLING HOT CONTENTS AND /OR EXPOSING THE BLADE RESULTING IN SERIOUS BODILY INJURIES OR PROPERTY DAMAGE.

- Do not use the magic bullet® Blender for other than its intended purpose.
- Always make sure that all non-food items (e.g., spoon or fork) are removed before blending. Non-food items left in the pitcher may crack or shatter the attachment resulting in bodily injury or damage.
- Close supervision is necessary when any appliance is used by or near children to ensure they do not play with the appliance. Keep cord out of reach of children.
- This appliance is not intended for use by persons (including children) with reduced physical, sensory, or mental capabilities, or lack of experience and knowledge, unless they are closely supervised and instructed concerning use of the appliance by a person responsible for their safety.
- NEVER LEAVE THE MAGIC BULLET® BLENDER UNATTENDED WHILE IT IS IN USE.

- Do not place or operate your magic bullet® Blender on uneven or unstable surfaces.
- The risk of fire, shock or damage to magic bullet® Blender during cleaning can be reduced by taking the following precautions:
 - Unplug and turn your device off before cleaning.
 - Only clean the exterior of your device.
 - Clean your device with a dry cloth.
- Do not attempt to clean the Motor Base by immersing it in water or other cleaning liquids. Only gently wipe and dry the Motor Base with a clean cloth. Do not place any magic bullet® part or accessory in a microwave, conventional oven, air fryer, or stovetop pot, or immerse in boiling water, as this will damage the part.
- Do not place or operate your magic bullet® Blender on or near a hot gas or electric burner, or in a heated oven.
- NEVER wash your magic bullet® parts or accessories using the sanitize or heat cycle of your dishwasher. Doing so can warp the part, which can create hazardous conditions during use that may result in bodily injury or property damage.
- NEVER place any magic bullet® parts or accessories in the freezer or use as a storage container in the freezer.
- Make sure your magic bullet® Blender is powered off, unplugged, and the motor and blades are completely stopped before removing or cleaning the unit.
- Remove and safely discard any packaging material or promotional labels before using the appliance for the first time.
- Do not operate if any of the parts and accessories are damaged in any manner which may impair proper function or create a safety hazard. Contact Customer Service for assistance at: 800-NBULLET (800-6285538).
- Do not use parts or accessories from other manufacturers or different models of magic bullet® products. Use of parts and accessories NOT provided by magic bullet® may damage your unit or cause serious injury.
- Use only genuine magic bullet® attachments/accessories specifically designed for your magic bullet® Blender. Aftermarket parts are not made to magic bullet® specifications and may damage your unit or cause serious injury.
- Do not attempt to defeat any safety interlock mechanisms.
- DO NOT USE OUTDOORS. ALWAYS UNPLUG THE MAGIC BULLET® BLENDER WHEN NOT IN USE.

Using the blending pitcher:

- warning! BEFORE STARTING A BLENDING CYCLE, ALWAYS AFFIX THE VENTED PITCHER LID TO THE BLENDING PITCHER WITH THE CAP TWISTED CLOSED. THIS WILL PREVENT INGREDIENTS FROM SPLASHING AND HOT INGREDIENTS FROM SPLATTERING, WHICH MAY CAUSE BURNS, BODILY INJURIES, OR PROPERTY DAMAGE.
- After blending hot ingredients or liquids, exercise caution when opening the Pitcher Lid; hot steam may escape, or hot ingredients may splatter.
- Do not overfill the Blending Pitcher beyond the MAX line. warning! CAUTION MUST BE OBSERVED IF HOT LIQUID IS POURED INTO THE BLENDER AS IT CAN BE EJECTED OUT OF THE APPLIANCE DUE TO A SUDDEN STEAMING. PRESSURIZED STEAM RELEASED FROM HOT LIQUIDS DURING BLENDING CAN CAUSE THE LID TO ERUPT FROM THE BLENDING PITCHER. TO PREVENT POSSIBLE BURN INJURIES, DO NOT FILL THE PITCHER BEYOND THE MAX LINE.

warning! TO INCORPORATE INGREDIENTS DURING BLENDING, OPEN THE VENTED CAP AND CAREFULLY POUR OR DROP INGREDIENTS INTO THE MIXTURE.

warning! ALWAYS USE CAUTION WHEN OPENING THE VENTED CAP IF THE BLENDED MIXTURE IS HOT OR WARM, AND BE MINDFUL OF ESCAPING STEAM OR THE SPLATTERING OF HOT INGREDIENTS. ALWAYS SECURELY REATTACH THE VENTED LID CAP AFTER ADDING INGREDIENTS.

When using manual speeds, always start blending on the LOW setting to integrate ingredients, then increase speed as needed.

Blending Pitcher Safety:

Proper use of the Blending Pitcher is important for the safe operation of your magic bullet® Blender. Using the Blending Pitcher inconsistent with these instructions may result in bodily injury, property damage, or damage to your unit.

- Always operate the Blending Pitcher with the Pitcher Lid securely locked into place.
- Before blending, check that the vent slots on the Pitcher Lid are clear and unobstructed. Clogged or obstructed vent slots can pressurize contents, potentially expelling the Lid from the Blending Pitcher, which can result in personal injury and property damage from escaping steam or hot ingredients.
- For recipes that require certain ingredients to be incorporated during blending, first add the base ingredients, then attach the Pitcher Lid and begin blending. Once the ingredients are well mixed, twist open the Vented Lid Cap and carefully pour or drop ingredients into the blended mixture. If the blended mixture is hot or warm, use caution and open the Vented Lid Cap slowly, being mindful of escaping steam or the splattering of hot ingredients. Always securely reattach the Vented Lid Cap when you are finished adding ingredients.
- Do not place hands or utensils inside the Blending Pitcher. This can result in severe bodily injury or damage.
- NEVER USE spatulas, spoons, or other tools that may make contact with the spinning blade during use. Doing so can damage the unit, shatter the Blending Pitcher, and cause severe bodily injury or property damage.

General blade safety:

warning! BLADES ARE SHARP! CARE SHALL BE TAKEN WHEN HANDLING THE SHARP CUTTING BLADES, EMPTYING THE PITCHER AND CUP AND DURING CLEANING. HANDLE WITH CARE TO AVOID BODILY INJURY. NON-FOOD ITEMS OR HARD INGREDIENTS MAY DAMAGE THE BLADES OF YOUR MAGIC BULLET® BLENDER. ROUTINELY INSPECT THE BLADES AND DISCONTINUE USE IF DAMAGED. OPERATING THE BLENDER WITH DAMAGED BLADES OR IN ANY MANNER INCONSISTENT WITH THESE INSTRUCTIONS MAY RESULT IN BODILY INJURY, PROPERTY DAMAGE, OR DAMAGE TO YOUR UNIT. DO NOT TOUCH THE SHARP EDGES OF THE BLADES. TO AVOID LACERATION INJURY, DO NOT HANDLE OR TOUCH ANY SHARP COMPONENTS OF THE BLADE.

NEVER STORE EXPOSED BLADES ON THE MOTOR BASE. EXPOSED BLADES CAN PRESENT THE HAZARD OF LACERATION AND SEVERE PERSONAL INJURY. ALWAYS ATTACH BLADE TO THE BLENDING PITCHER WHEN STORING.

- Do not remove the Blending Pitcher until blades have come to a complete stop. Removing before the blades come to a complete stop can cause damage to the attachments or unit.
- Always POWER OFF and UNPLUG the unit and wait until the Blade comes to a complete stop before assembling, disassembling, changing accessories, or cleaning.
- ALWAYS securely tighten the Cross Blade to the Blending Pitcher to prevent leakage.
- DO NOT attempt to disengage the Blending Pitcher from the Motor Base if it starts to leak during blending. If a leak occurs, power off or unplug the unit and allow the motor to come to a complete stop before removing the Blending Pitcher. This will prevent risk of separation of and exposure to the spinning blade.
- DO NOT crush ice. Your magic bullet® Blender is not intended to be used as an ice crusher, which may shatter the Blending Pitcher, causing injury or damage.

- DO NOT blend stone fruit in this appliance unless pits/seeds have been removed. Fruit pits may damage the Blending Pitcher, potentially resulting in shattering and personal injury. In addition, apple seeds and the pits of cherries, plums, peaches, and apricots contain a chemical known to release cyanide into the body when ingested.
- Do not overload the Blending Pitcher as this may prevent the Blade from spinning. If this occurs, turn off the unit, empty some of the contents, reattach, and resume.
- Do not attempt to grind dry ingredients such as grains, cereal, or coffee, as this may damage the motor and/or Blade. Use of dry ingredients may cause the motor to overheat.
- AVOID CONTACT WITH MOVING PARTS! Keep hands and utensils out of and away from the Blade to reduce the risk of severe personal injury or damage to the unit.
- NEVER place the Blade or any magic bullet® part or accessory on the bottom rack of the dishwasher or use the heat/sanitize cycle.
- Periodically inspect your Cross Blade. If the blades do not rotate freely or are damaged, immediately discontinue use and contact Customer Service. If the gasket to the Blade is missing or damaged, discontinue use and contact Customer Service. We recommend replacing the Blade every 6 months (depending on use), or as needed for optimal performance.
- Do not use after-market replacement parts for your magic bullet® Blender. After-market replacement parts may result in damage to your magic bullet® Blender or create safety hazards resulting in bodily injury or damage. Only order replacement parts from nutribullet.mx or by contacting customer service at 800-NBULLET (800-6285538). When calling, please specify the product model to order compatible parts.

Electrical safety:

Modification, improper use, and failure to follow the instructions for proper set up, use, and care of your magic bullet® Blender can increase the risk of serious personal injury, death, or property damage.

- In order to avoid a hazard due to inadvertent resetting of the thermal cut-out, this appliance must not be supplied through an external switching device, such as a timer, or connected to a circuit that is regularly switched on and off by the utility.
- Do not use the unit in countries or locations with different electrical specifications or plug types.
- Do not use the unit with a voltage converter device, as it may cause electrical shorting, fire, or electric shock, resulting in personal injury or damage to the product or property.
- Do not use the unit in an area that is wet, or anywhere it could become wet.
- If the supply cord is damaged, it must be replaced by the manufacturer, its service agent or similarly qualified persons in order to avoid a hazard.
- Do not attempt to plug the unit into an electrical outlet with wet hands.
- Do not use the cord, plug, or Motor Base if it has been immersed in water or other liquids. Any significant spillage on, under, or around the Motor Base should be cleaned and dried before plugging in and using the unit.
- Do not modify the electrical cord in any way.
- Do not operate any unit with a damaged electrical cord or plug. The electrical cord and plug are not suitable for replacement. If damaged, the appliance must be replaced. Contact Customer Service for assistance at: 800-NBULLET (800-6285538).
- Do not allow or place the electrical cord near or touching any hot surfaces, heat source, or flame, including the stove.
- Do not allow the electrical cord to hang over the edge of a table or counter.

- Do not pull, twist, or damage the power cord.
- Overloading the unit may overheat the motor and engage the thermal breaker. If the internal thermal breaker shuts off the motor, unplug the Motor Base and let it cool for an hour before attempting to use it again. The thermal breaker will reset when the unit is unplugged and the thermal breaker cools down.
- Always UNPLUG your magic bullet® Blender when it is not in use, and when assembling, disassembling, changing accessories, or cleaning.
- NEVER pull from the power cord to unplug. To unplug, grasp the plug and pull from the outlet.
- Use of incompatible parts or aftermarket parts may result in damage to your magic bullet® Blender or create safety hazards that may cause personal injury or damage. When ordering replacement parts, always use genuine magic bullet® parts and accessories from nutribullet.mx or contact Customer Service at: 800-NBULLET (800-6285538).

ventilation

- NEVER obstruct the ventilation openings on the bottom of the Motor Base of your magic bullet® Blender. Openings on the bottom of the Motor Base should be free of dust and lint and never obstructed. Obstructing the ventilation openings may overheat the motor, presenting a fire hazard that may cause serious personal injury, death, or property damage.
- ALWAYS operate the magic bullet® Blender on a level surface, leaving unobstructed space beneath and around the Motor Base to permit proper air circulation. Slots on the bottom of the Motor Base are provided for ventilation to ensure reliable operation and to prevent the motor from overheating.
- NEVER place your magic bullet® Blender on top of flammable materials such as newspapers, tablecloths, napkins, dishtowels, place mats, or other similar materials.

Medical safety

- Always consult your physician regarding health and nutrition concerns and advice. The information contained in this User Guide are not meant to replace the advice of your physician.
- ALWAYS follow recommended maintenance and care instructions in the User Guide. NEVER operate your magic bullet® Blender with damaged components. If your magic bullet® Blender malfunctions or is damaged in any way, immediately discontinue use and contact Customer Service at: 800-NBULLET (800-6285538). If you have any comments, questions, or concerns, please go to nutribullet.mx or call Customer Service.

Save these instructions!

What's included



motor base



1.5 l pitcher

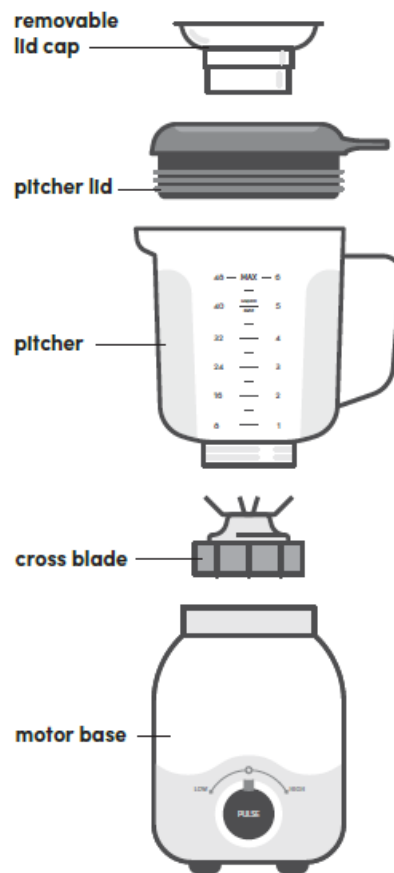


cross blade

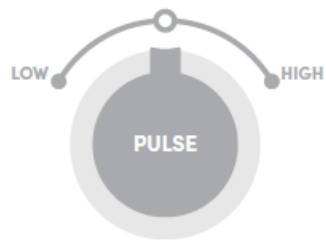


pitcher lid

Assembly guide

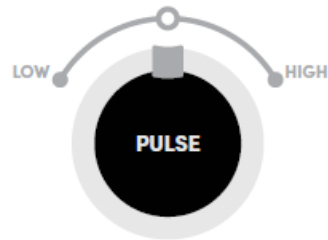


User interface



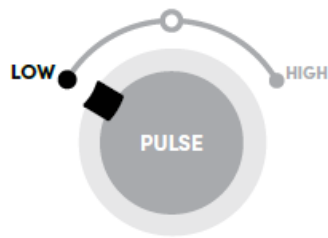
home

The dial is in the center position. The blender is not running.



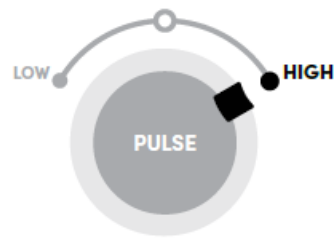
pulse

With the dial in the center position, press and hold the **PULSE** button. To stop blending, release the **PULSE** button.



low

Turn the dial to the left to start a preset low-speed blend cycle. Turn the dial back to **HOME** when finished.



high

Turn the dial to the right to start a preset high-speed blend cycle. Turn the dial back to **HOME** when finished.

Using the blender pitcher

warning!

- Only operate the Blending Pitcher with the Pitcher Lid securely attached.
- Never turn the power on while using the Pitcher without the Vented Lid Cap inserted and locked into place!
- Always use extreme care and attention when blending hot ingredients!
- Always use caution when opening the Pitcher Lid after blending hot ingredients!

1. Place the Motor Base on a clean, dry, level surface.
2. Inspect the Pitcher and ensure the Pitcher and Blade are secured. To tighten the Blade, twist it counter-clockwise onto the bottom of the Pitcher. To loosen/release the Blade, twist it clockwise until it detaches from the Pitcher .



3. Add ingredients to the Pitcher. warning! DO NOT exceed the MAX line!
4. Place the Lid on top of the Pitcher and press down firmly to snap into place. Place the Lid Cap over the Lid opening, then press down and twist to lock it in place.

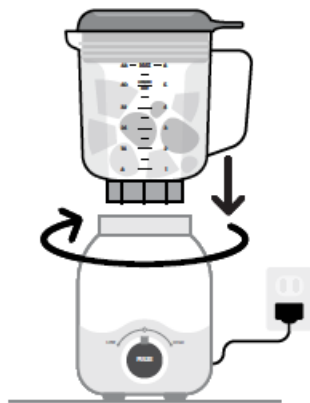


5. Place the Pitcher upright onto the Motor Base so the Blade meets the Motor Base and gently twist it clockwise to lock into place.

You will feel a “click” when the blender is secured.

Plug the power cord into an outlet.

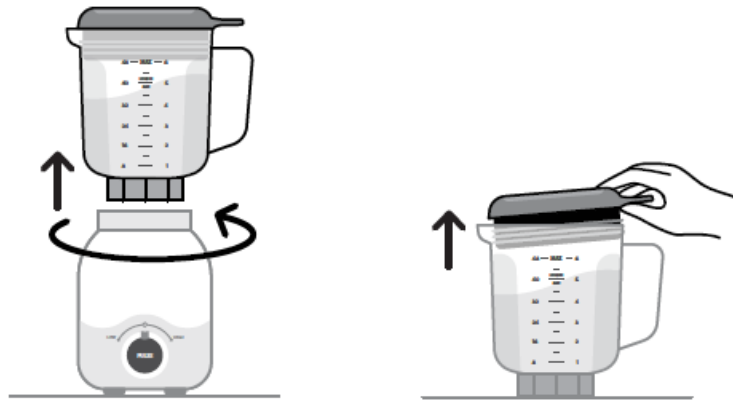
6. Run the desired blending program: twist the Power Control Knob to LOW or HIGH or keep in the HOME position and press the dial button to PULSE.
If the blender won't run, double check to ensure the Pitcher is locked in place.



7. If using the HIGH or LOW blending cycle, return the Power Control Knob to the HOME position after the cycle completes. If ingredients require further blending, return the Power Control Knob to the HOME position first before beginning the next cycle of blending (HIGH, LOW, or PULSE).
8. Twist the Knob to HOME once you have finished blending.



9. Twist the Pitcher counterclockwise and lift off of the Motor Base. warning! Blades are sharp. Never insert your hands into the Pitcher.
10. Lift the lid tab with your thumb to loosen and remove the Lid. Transfer contents to your desired serving vessel and enjoy!



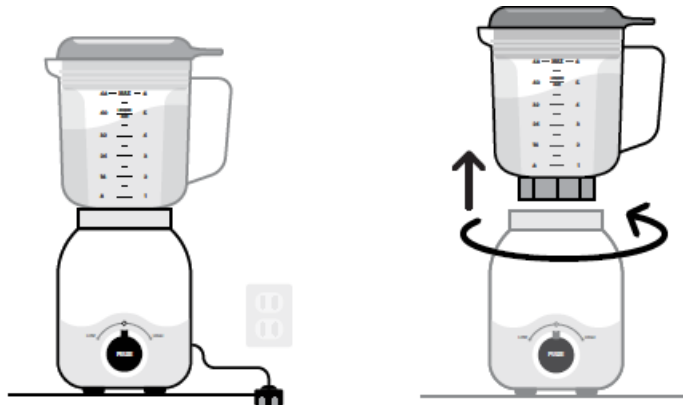
Cleaning the magic bullet® Blender is easy. All components, except the Motor Base, are dishwasher safe.

warning!

Blades are sharp! Handle with care.

Never submerge the Motor Base! Keep it away from water and other liquids.

1. POWER OFF and UNPLUG
2. Separate the Pitcher from the Motor Base. the Motor Base.



3. Lift the lid tab with your.
4. Remove / transfer any thumb to loosen and remove the Lid. remaining ingredients from the Pitcher.

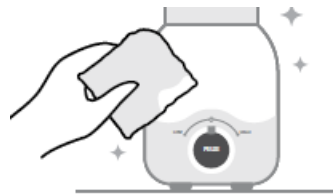


5. Twist the Blade clockwise to remove it from the Pitcher.
6. You can hand-wash the Pitcher or any other accessories. You can also place them onto the top rack of the dishwasher. warning! NEVER use the sanitize cycle for risk of warping the accessories.



7. You can clean the Motor Base by wiping the surface with a damp sponge or cloth.

warning! NEVER submerge the Motor Base in any liquid OR remove pieces from the Motor Base.



8. You can scrub the actuator clean with a small, dry brush.

warning! NEVER try to clean the Motor Base while it is plugged in.



Soring

your blender. Store all components of the unit together in a safe place where they will not be damaged or cause harm. Never leave the blades exposed while storing.

Replacement parts

Order new and replacement parts at nutribullet.mx or call customer service at 800-NBULLET (800-6285538). Use only genuine Magic Bullet® parts and accessories specifically designed for your magic bullet® Blender. Aftermarket parts are not made to magic bullet® specifications and may damage your unit or cause serious bodily injury or damage.

LICUADORA


MARCA: MAGIC BULLET®

MODELO: MBF04

ESPECIFICACIONES ELÉCTRICAS: 120 V ~ 60 Hz 500 W

Capital Brands Distribution, LLC | All rights reserved. magic bullet® is the trademark of CapBran Holdings, LLC registered in the U.S.A. and worldwide. Illustrations may differ from the actual product. We are constantly striving to improve our products, therefore the specifications contained herein are subject to change without notice.
240718_MB04100-DL

Documents / Resources

 <p>magic bullet. licuadora</p> <p>guía de usuario.</p>	<p>magic bullet MBF04 Multi Function High Speed Blender [pdf] User Guide MBF04100-DL, F240719, MBF04 Multi Function High Speed Blender, Multi Function High Speed Blender, Function High Speed Blender, High Speed Blender, Speed Blender</p>
--	---

References

- [User Manual](#)

[Manuals+](#), [Privacy Policy](#)

This website is an independent publication and is neither affiliated with nor endorsed by any of the trademark owners. The "Bluetooth®" word mark and logos are registered trademarks owned by Bluetooth SIG, Inc. The "Wi-Fi®" word mark and logos are registered trademarks owned by the Wi-Fi Alliance. Any use of these marks on this website does not imply any affiliation with or endorsement.