



MADSTAD ENGINEERING FTR1200 Quick Release Shields System Instruction Manual

[Home](#) » [MADSTAD Engineering](#) » **MADSTAD ENGINEERING FTR1200 Quick Release Shields System Instruction Manual** 

MADSTAD ENGINEERING FTR1200 Quick Release Shields System



Please read this entire manual before proceeding with the installation

Contents

- [1 WHAT IS IN THE BOX](#)
- [2 Tools Needed](#)
- [3 Headlight Removal](#)
- [4 Base Bracket Installation](#)
- [5 Headlight Re installation](#)
- [6 Windshield Brackets](#)
- [7 Windshield Installation](#)
- [8 Returns and Warranty](#)
- [9 Customer Support](#)
- [10 Documents / Resources](#)
 - [10.1 References](#)

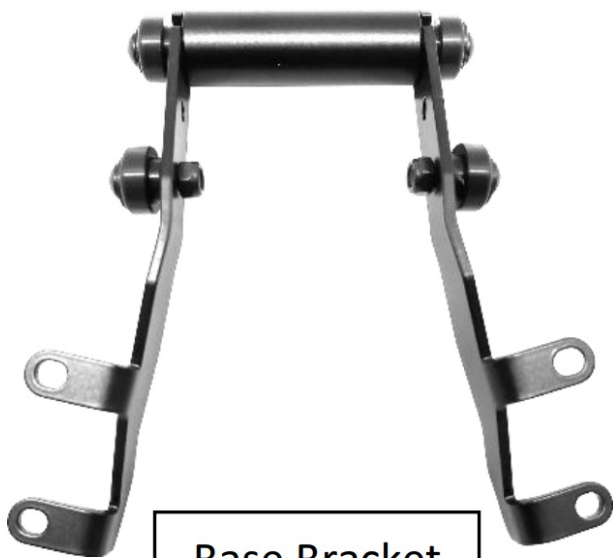
WHAT IS IN THE BOX

- (1) Base bracket assembly
- (2) Adjustable bracket assemblies (for touring shield, if ordered)
- (2) Fly screen bracket assemblies (for fly screen, if ordered)
- (4) M6 x 12 button screws
- (8) M5 x 20 truss screws

- (8) M5 plastic washers
- (8) M5 soft rubber washers

Tools Needed

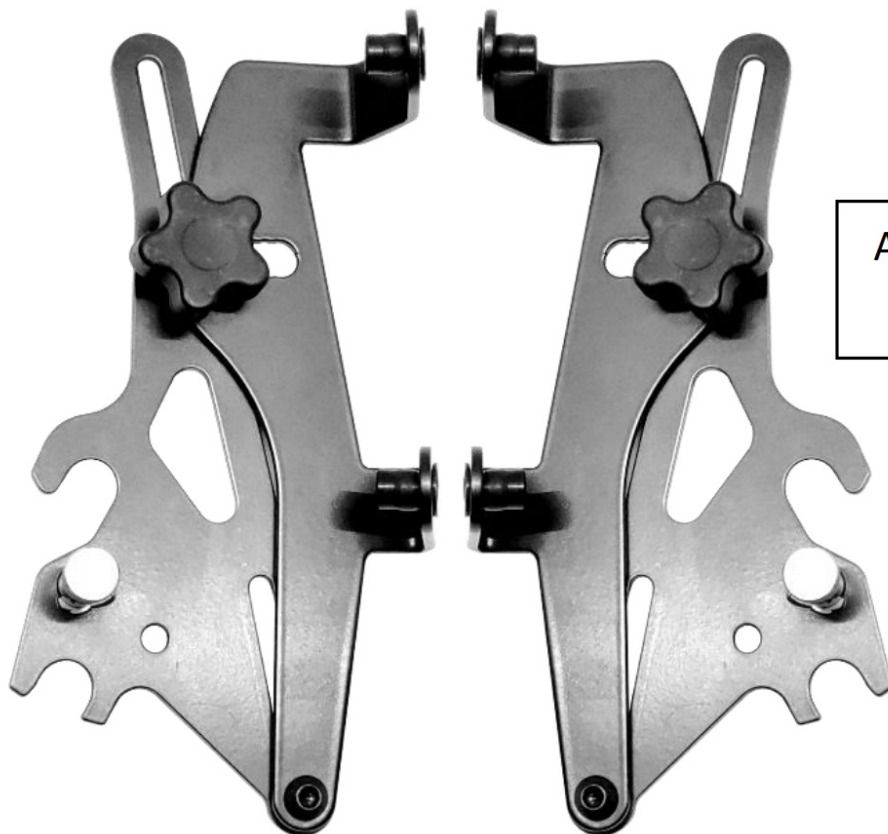
- 4 mm Allen wrench (hex key)
- 5 mm Allen wrench (hex key)
- 10mm Socket wrench



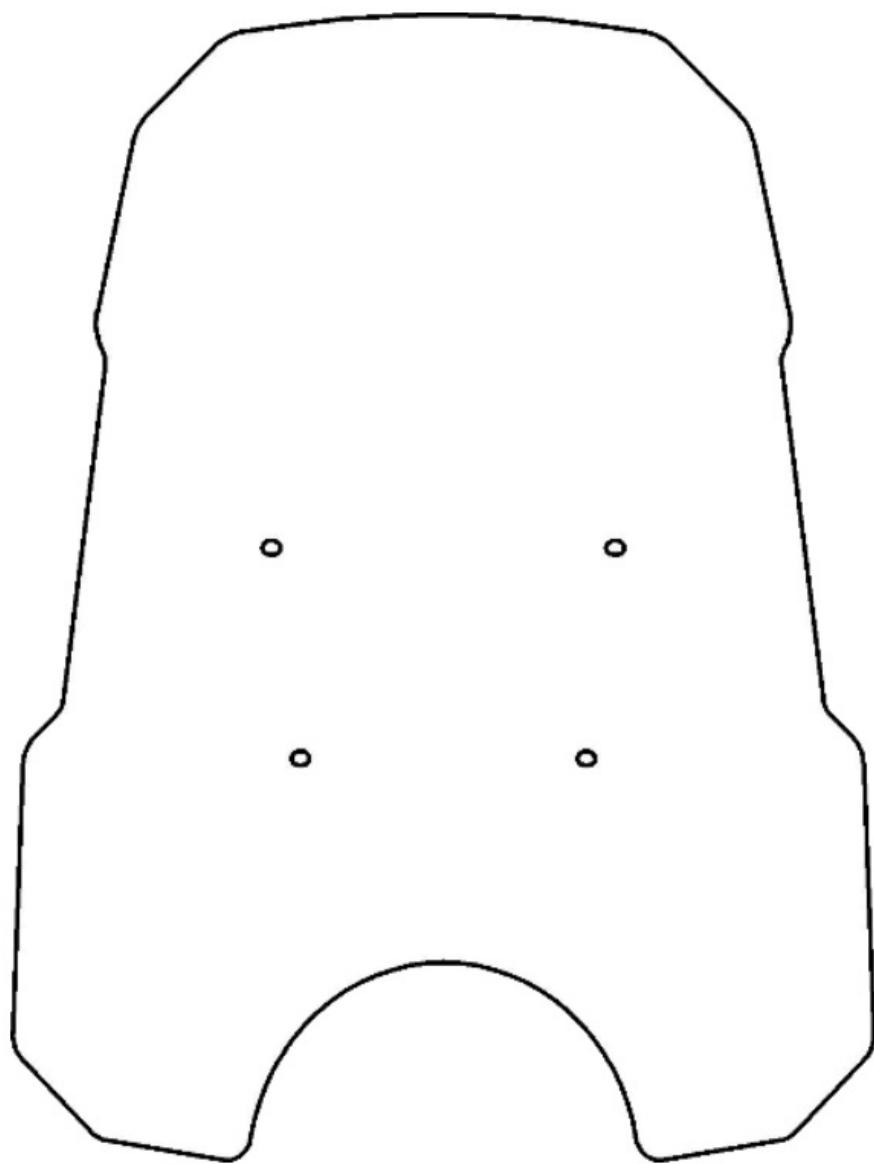
Base Bracket
Assembly



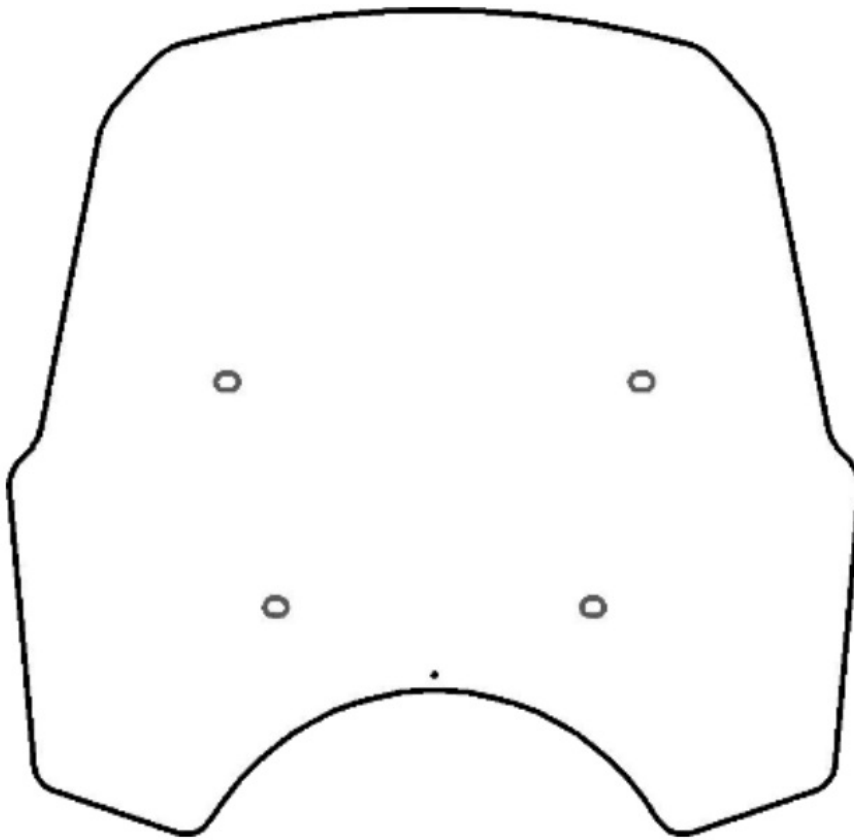
Fly Screen
Brackets



Adjustable Windshield
Brackets



Windshield



Fly Screen

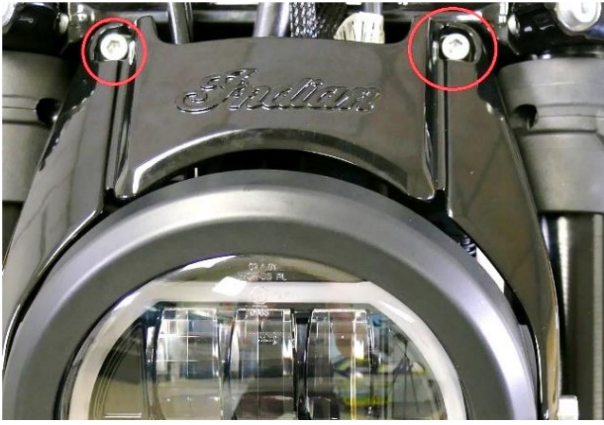
We would love to have your feedback on this Installation Manual. Please email us at support@madstad.com

Headlight Removal

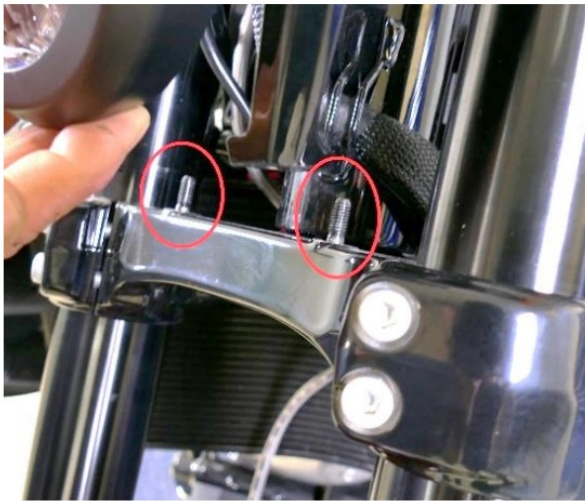
- **A.** The headlight has to be temporary removed to install the main bracket. There are two 10mm nuts at the bottom of the headlight, on the fork brace, that have to be removed.



- **B.** There are also two screws that have to be removed right above the headlight, on the headlight shroud.



- C. The Headlight Shroud sits on two welded-in screws off of the fork clamp. When removing the shroud and headlight, lift slightly up and then pull away.



- D. There are two wiring clusters – one for the headlight and the other for components. Both are attached to the back of the headlight by a plastic retainer clip. They can be simply pulled out, away from the headlight.



- E. Disconnect the electrical connector going into the back of the headlight as seen below, then remove the headlight.



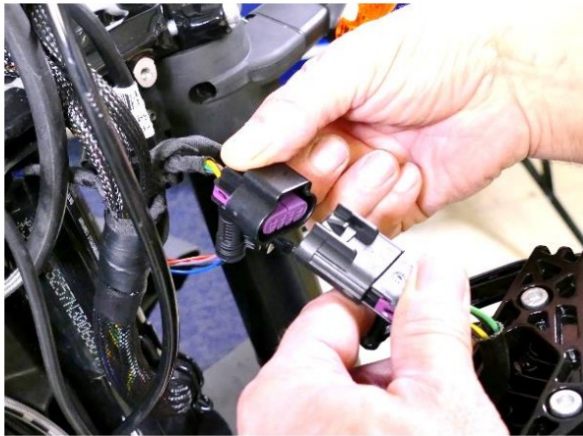
Base Bracket Installation

The Main Bracket consists of a small crossbar with two sides that have our quick-release spools attached to the sides. There are (4) mounting flanges on the bracket that get attached to the red circled mounts using (4) M6 X 12 screws as seen in the photos below. Be sure the rollbar is at the top of the assembly.

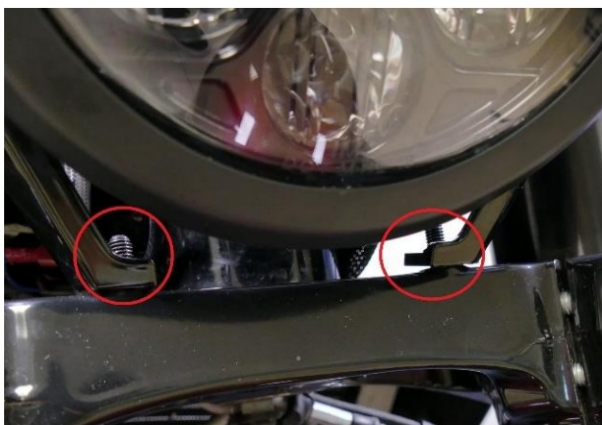


Headlight Re installation

- **A.** Reattach the headlight plug then push the connector retaining clips into the back of the headlight assembly.



- **B.** The Headlight shroud sits back on the two threaded posts on the fork clamp and are attached with the 10mm nuts. Then the top of the shroud is attached using the 5mm screws that were removed earlier.



Windshield Brackets

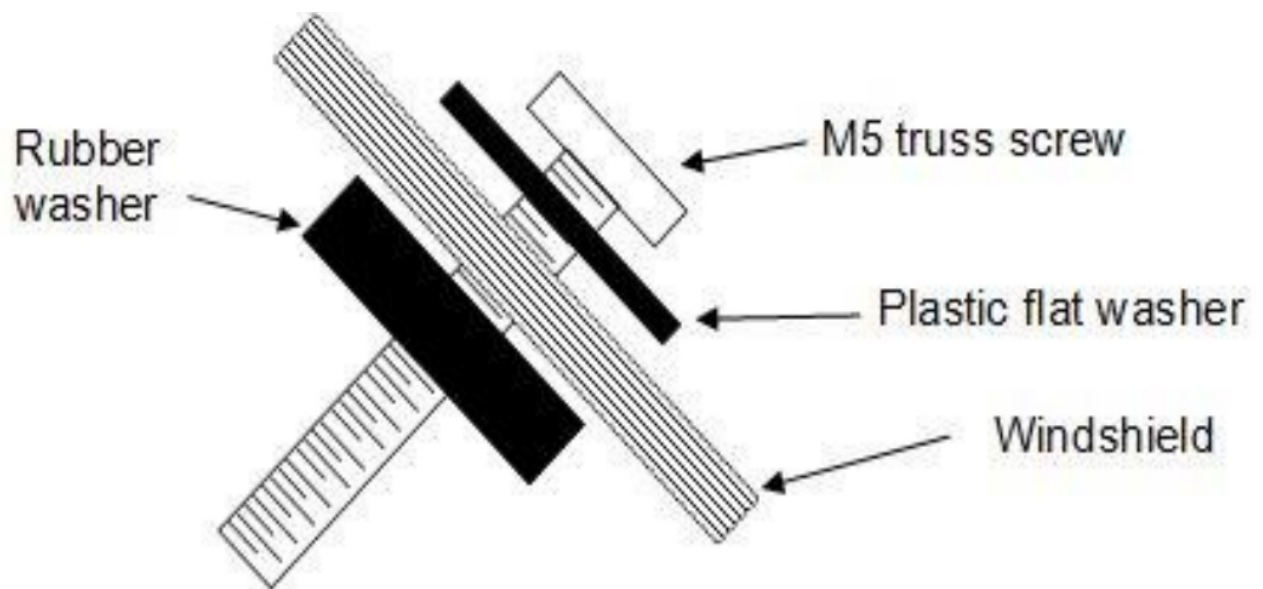


The MadStad Quick-Release Brackets slide onto the black spools that are on the base bracket. They have a spring pin locking mechanism. Pulling out the pin head then rotate it counter-clockwise to lock the pin into the open position. Turning clockwise will release the pin to go forward and lock into place. Be sure the adjustment knobs are facing outward and that the locking pin is through the hole in the bracket.



Windshield Installation

- **A.** Pre-install the Truss screws & washers into the windshield holes as shown in the image at right.
- **B.** Once all four of the screws are in place, gently guide the screws into the Well Nuts in the brackets until all four are set.
- **C.** Hand tighten the Truss screws until they swell up behind the bracket and are firmly holding the windshield. Be sure not to overtighten. See photos below



Well Nut Tips:



Not Tightened



Over Tightened



Correct

****HAND TIGHTEN****

Windshield Care

To clean bugs and grime off the shield use a soft wet cloth and soapy water. Don't use any products that contain ammonia, bleach, or alcohol. Orange-oil based cleaners are fine for removing tough sticky road grime. To polish the shield or remove fine scratches we recommend Meguiar's PlastX. This can be found at many auto parts stores or department stores like WalMart.

Pivot Screws

The MadStad mount has a pivot screw on each set of brackets, located near the middle of brackets. A nylon lock nut keeps the screw in place, yet allows the brackets to slide back and forth. It is adjusted at the factory to have a minimum of play yet still allow the brackets to move. The upper pivot hole gives maximum rearward tilt, and the lower pivot hole moves the tilt range 5 degrees more forward. If for some reason you wish to adjust the tightness of this pivot screw or move it to an alternate pivot position, use a 4mm Allen wrench along with a 10mm socket or open-end wrench to make the adjustment. If you tighten the lock nut completely you will not be able to slide the brackets.

Adjustment Knobs

To adjust the windshield for height and/or angle you must loosen the knobs about 1-2 turns to loosen the brackets allowing them to slide back and forth. Gently push or pull on the shield to position it where you want it. Once you have the brackets adjusted, you do not need to tighten the knobs down hard, just snug enough to prevent them from moving out of adjustment.

Adjustments

You will have at least 2" of vertical travel and 20 degrees of angle to work with. We suggest setting the angle first, usually about the same angle as the forks on the bike. Loosening the knobs allows for adjustments. Take the bike out and test. You may want to change the angle a little or change the height – this is very much a trial and error type of experiment. Be sure to stop and pull over when making adjustments. Different weather conditions and different speeds will help in determining what works best for you.

Disclaimer

Neither MadStad Engineering nor its owners shall be liable for any damages, consequential or inconsequential, resulting from the use of our products. Installation of any of our products constitutes acceptance of these terms. It is the responsibility of the user to make sure all fasteners are tightened securely; the windshield is mounted properly and the adjustment knobs are tightened snugly before putting the motorcycle in motion. MadStad systems ARE NOT intended to be adjusted while the vehicle is in motion; you must pull over out of the way of traffic and come to a complete stop before making any changes. The user must never place the windshield in such a position as to interfere with the safe and complete movement of the handlebars and controls.

Returns and Warranty

MadStad adjustable brackets carry a lifetime warranty against manufacturing defects. This does not include cosmetic issues nor any parts that inherently wear out or degrade over time such as rubber and plastic parts. Windshields, deflectors, and other similar plastic parts are warranted for 1 year against manufacturing defects, not against cosmetic issues or issues related to normal wear and tear. Please visit our website for further details.

Customer Support

MadStad Engineering, Inc.

1451 E. Jefferson St.

Brooksville, FL 34601

352-848-3646

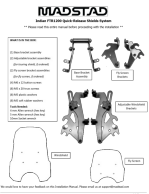
Web Site: <http://www.madstad.com>

Email: support@madstad.com

Thank you for your support, and ride safely!

MADSTAD

Documents / Resources

	MADSTAD ENGINEERING FTR1200 Quick Release Shields System [pdf] Instruction Manual FTR1200 Quick Release Shields System, FTR1200, Quick Release Shields System, Release S hields System, Shields System, System
---	--

References

- [M Adjustable motorcycle windshield systems | motorcycle windscreen | Madstad](#)
- [M Adjustable motorcycle windshield systems | motorcycle windscreen | Madstad](#)
- [User Manual](#)

[Manuals+](#), [Privacy Policy](#)

This website is an independent publication and is neither affiliated with nor endorsed by any of the trademark owners. The "Bluetooth®" word mark and logos are registered trademarks owned by Bluetooth SIG, Inc. The "Wi-Fi®" word mark and logos are registered trademarks owned by the Wi-Fi Alliance. Any use of these marks on this website does not imply any affiliation with or endorsement.