



MADGETECH IFC300 Data Logger Interface User Guide

[Home](#) » [MADGETECH](#) » MADGETECH IFC300 Data Logger Interface User Guide 

MADGETECH IFC300 Data Logger Interface



Contents

- [1 Package Contents](#)
- [2 Install Software and Setup USB Data Logger Interface](#)
- [3 Connect the USB Data Logger Interface](#)
- [4 Test the Data Logger Interface Operation](#)
- [5 Documents / Resources](#)
 - [5.1 References](#)
- [6 Related Posts](#)

Package Contents

IFC300/400

- IFC300/400 Docking Station



- USB to Mini-USB Cable



- Data Logger Software on USB Flash Drive



- Quick Installation Guide

For XP SP3/Vista/Windows 7/Windows 8

IMPORTANT: Do not connect the IFC300/400 to your PC until instructed to do so or the setup will not work.

Install Software and Setup USB Data Logger Interface

A Insert the MadgeTech Data Logger Software USB Flash Drive into an available USB port on your PC. Click the **Start** menu and choose **Computer or My Computer**. Browse to the Removable Disk drive corresponding to the USB port you selected.

For Windows 7 users, a dialog box may appear with a list of options. Select “Open Folder to View files”. If you are not prompted, click the **Start** menu and choose **Computer or My Computer** and browse to the Removable Disk drive corresponding to the USB port you selected.

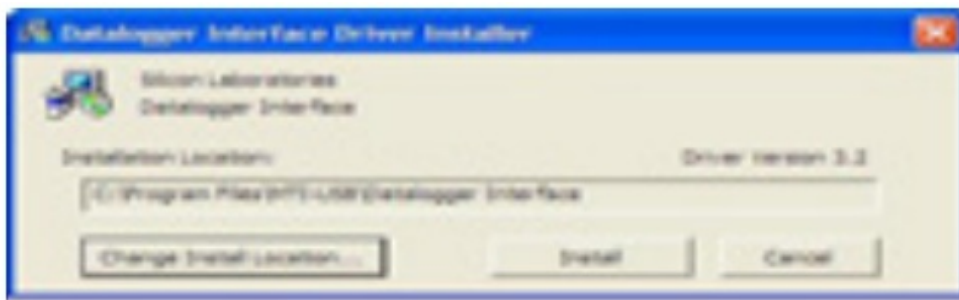


Once you locate the contents of the USB flash drive, click on the **autorun** program file. A set-up screen will display with options as shown above.

B Click on the **MadgeTech Software** link on the USB Contents screen to start the installation of the Data Logger Software. The **Install MadgeTech Software** window will appear, click on the **Install MadgeTech Software** link. Follow the on screen prompts to complete the installation. Click Back to MadgeTech Contents when completed.



C The default directory is C:\Program Files\MTI-USBDataLogger Interface. If you choose to change the location of the install directory click on the **Change Install Location** button. Once you have the **install** location set click on the Install button to start the installation.



To install the drivers for the IFC300/400, click on the **Drivers and Third Party Tools** link on the CD Contents screen. In the next window click on **Install USB Interface Drivers**. A window will appear prompting for a directory and to start the installation.

Connect the USB Data Logger Interface

A Remove the Warning Label to expose the USB connector. Connect one end of the USB cable to the USB port of the IFC300/400.

WARNING: Install driver before connecting this device.



B Connect the other end to a USB port on your PC. When the IFC300/400 is plugged in, a **New Hardware Found** message will appear in the lower right corner of your screen. The new drivers will automatically configure themselves for use with the Interface cable. A message will then appear that the new hardware is installed and ready to use. The installation of the USB data logger interface is complete.

Test the Data Logger Interface Operation

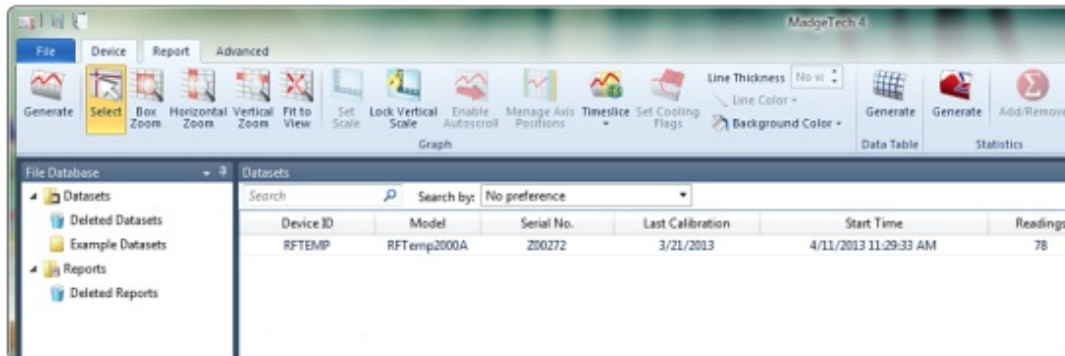
A To verify that the USB Interface drivers are installed properly, check to ensure the Data Logger Software can recognize a device.

B When the interface cable is connected to the PC the blue LED power indicator light should be on. If the

indicator light is not on, unplug the interface cable, wait 5 seconds and plug it back into the PC.

C Start the MadgeTech Data Logger Software. (If necessary, see the software manual for additional information on the software)

D Your device(s) will appear in the list displayed, select your device in this list and choose your desired start method.




<https://www.instrumentation2000.com/>

(732) 632-6400



Documents / Resources

	<p>MADGETECH IFC300 Data Logger Interface [pdf] User Guide IFC300 Data Logger Interface, IFC300, Data Logger Interface</p>
---	--

References

- [Instrumentation2000.com - Test Instruments and Accredited Calibration](https://www.instrumentation2000.com/)

Manuals+.