



MADERA Roller Shade with Cordless Clutch System User Guide

[Home](#) » [MADERA](#) » MADERA Roller Shade with Cordless Clutch System User Guide 

Contents

- [1 MADERA Roller Shade with Cordless Clutch System](#)
- [2 USE AND CARE GUIDE](#)
 - [2.1 PACKAGE CONTENTS](#)
 - [2.2 Safety Information](#)
 - [2.3 Pre-Installation](#)
 - [2.4 INSTALLATION](#)
- [3 Troubleshooting](#)
- [4 Documents / Resources](#)
- [5 Related Posts](#)



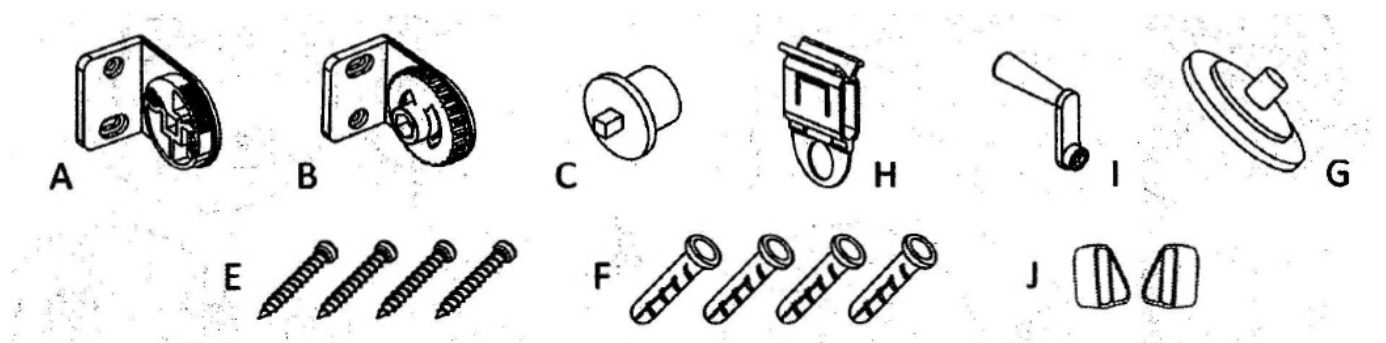
MADERA Roller Shade with Cordless Clutch System



USE AND CARE GUIDE

ROLLER SHADE WITH CORDLESS CLUTCH SYSTEM:

PACKAGE CONTENTS



Part	Description		Quantity
A/B	Bracket A / Bracket B		1/1
C	Pin-end plug		1
D	Plastic hem slat		1
E	Screws		4
F	Anchors		4
G	Temporary endcap		1
H	Grip		1
I	Re-tensioning crank	...	1
J	Hem pins		2
K	Fabric roll		1

THANK YOU

We appreciate the trust and confidence you have placed in through the purchase of this ROLLER SHADE WITH COROLLES CLUTCH SYSTEM. We strive to continually quality products; designed to enhance your home. Visit us online to see our full line of products available for your home improvement needs; Thank you

Safety Information

WARNING: Product failure due to, using incorrect fixings is responsibility of the installer. In case of doubt on what anchor to use, please consult with a professional. For surfaces such as metal or concrete, please purchase appropriate screws and hardware.

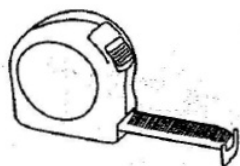
NOTICE: This Shade can be resized in store, Determine the space to be occupied by the shade with brackets, and ask a store associate to cut it if necessary.

Care and Cleaning

You may clean your Shade using a mild solution. Brush lightly with a soft cloth. Let the Shade dry before rolling it up.

Pre-Installation

TOOLS REQUIRED



Tape Measure



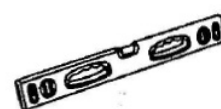
Pencil



Drill & Bit Set



**Philips-head
screwdriver**

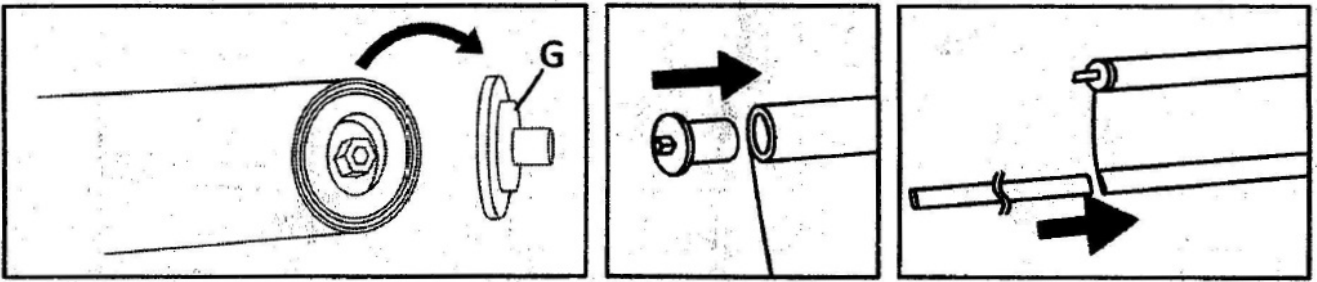


Level

INSTALLATION

Assemble the Shade

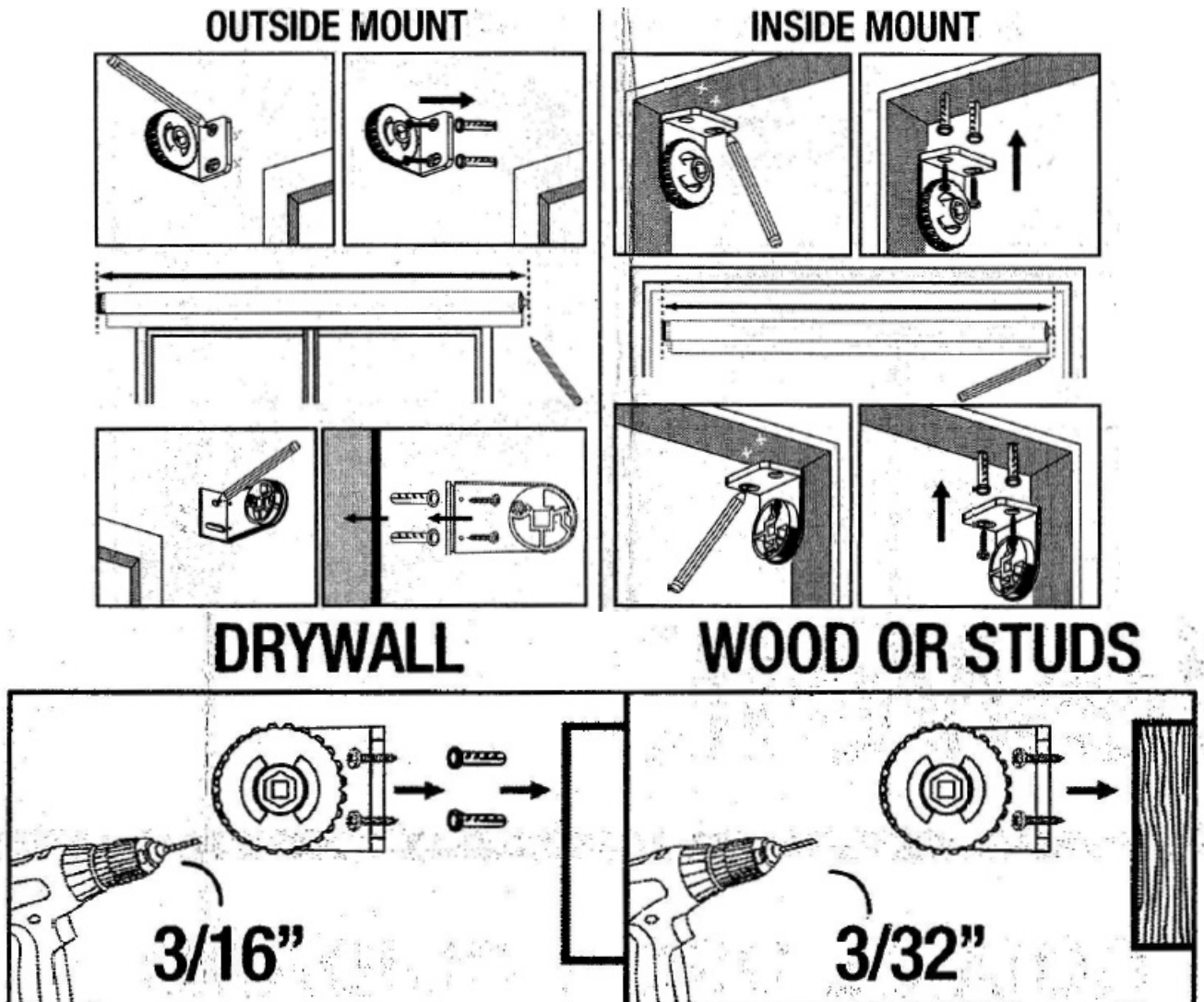
1. Level Trim any loose threads from the Shade with scissors if necessary. Remove temporary end cap from hex end of Shade and insert pin end plug on the opposite end. Slide plastic slat through the item.



2. Bracket installation

Decide to mount your Shade **INSIDE** or **OUTSIDE** window frame. Mark bracket B location on your left and install it. Insert ~x-end of the Shade into bracket B. Then position bracket A so the Shade is leveled and centered. Use a level if needed. Mark bracket A location. Remove the Shade and install bracket A. Proceed to Step 3.

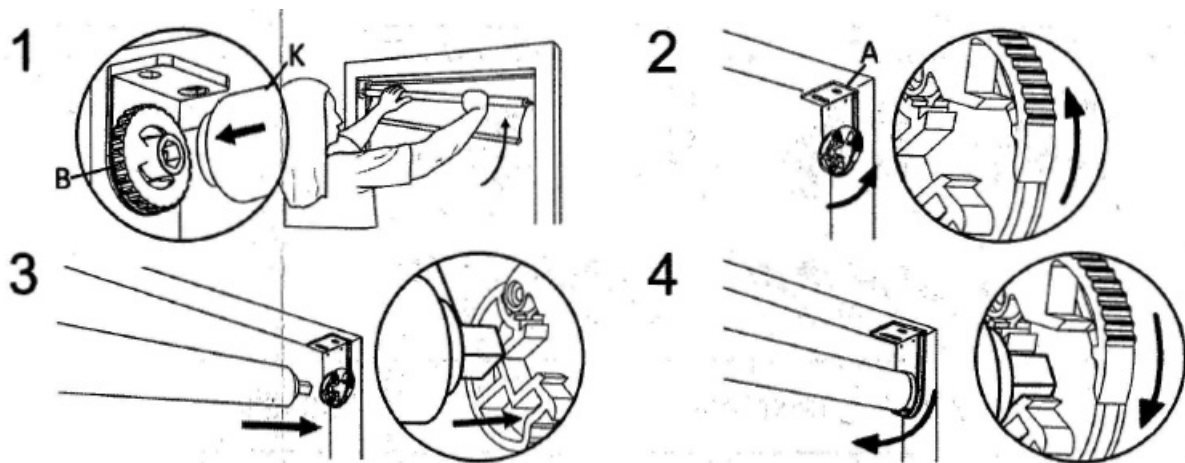
CAUTION: Bracket installation on **WOOD:** Pre-drill pilot holes with ~ 3/32 in. bit. Secure the brackets With screws provided. Bracket installation on **DRYWALL/OR PLASTER:** Pre-drill pilot holes with 3/16 in. bit. Insert the anchors into the holes and secure the brackets ' with screws provided.



3. Install the Shade

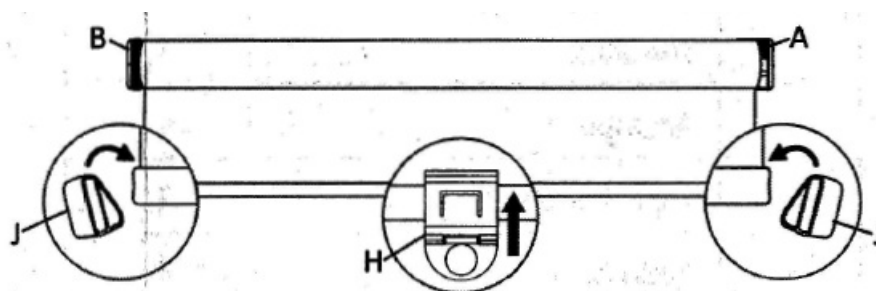
Insert hex end of Shade into bracket B, Rotate the Shade for a tight fit if necessary, Drop the pin-end into bracket A with open latch. Close the latch on bracket by slowly pressing down on it until it clicks into place.

CAUTION.: Before placing the shade into the brackets make sure the fabric is rolled d up evenly.



4. Install bottom hem pins


Insert pins on each side of the hem. Attach the grip to the center of the hem.



Troubleshooting

Problem	Solution
The Shade rolls up to slowly.	<p>Increase the tension by rotating the adjusting knob towards yourself. Alternatively, you can also tighten the tension by:</p> <ol style="list-style-type: none"> 1. Pull down one foot so that the shade is locked in place 2. Remove Shade from brackets
Roll shade up all the way	
	4. Re-install on brackets
The Shade rolls up too quickly.	<p>Soften the tension by rotating the adjusting knob in the direction towards the window. Alternatively, you can also reduce the tension by:</p> <ol style="list-style-type: none"> 1. Remove shade from brackets 2. Unroll shade down an additional foot 3. Re-install on brackets
The Shade lost its tension entirely.	<p>The shade can be re-tensioned using the crank provided. Rotate clockwise the number of cycles outlined below, then half a cycle counterclockwise to lock tension in place.</p> <ol style="list-style-type: none"> 1. For <37 1/4" width: 12 cycles. 2. For >37 1/4" but <55 1/4" width.:18 cycles. 3. For >55 1/4" but <73 1/4" width: 28 cycles.

Documents / Resources

	<p>MADERA Roller Shade with Cordless Clutch System [pdf] User Guide Roller Shade with Cordless Clutch System, Roller Shade, Cordless Clutch System, Clutch System, Sade Cordless Clutch</p>
---	--