

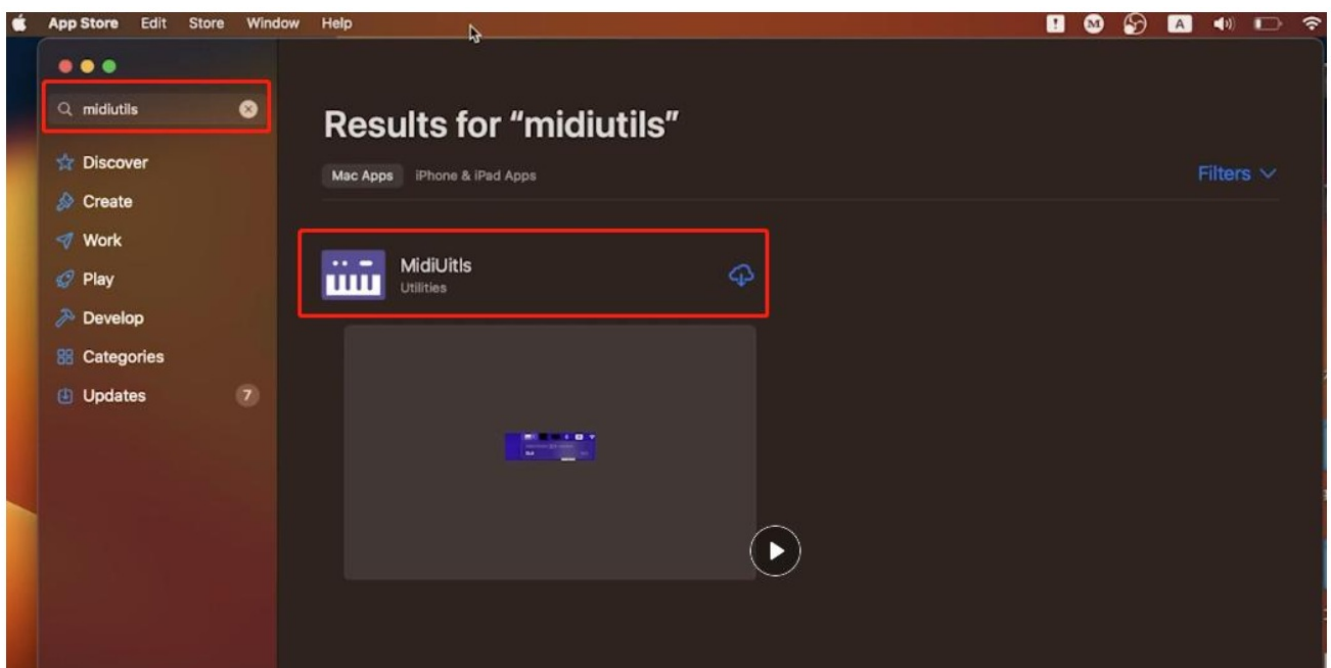
## MacRumors Forums MAC BT Connection Suspect Bluetooth Connection User Guide

[Home](#) » [MacRumors Forums](#) » MacRumors Forums MAC BT Connection Suspect Bluetooth Connection User Guide 📄

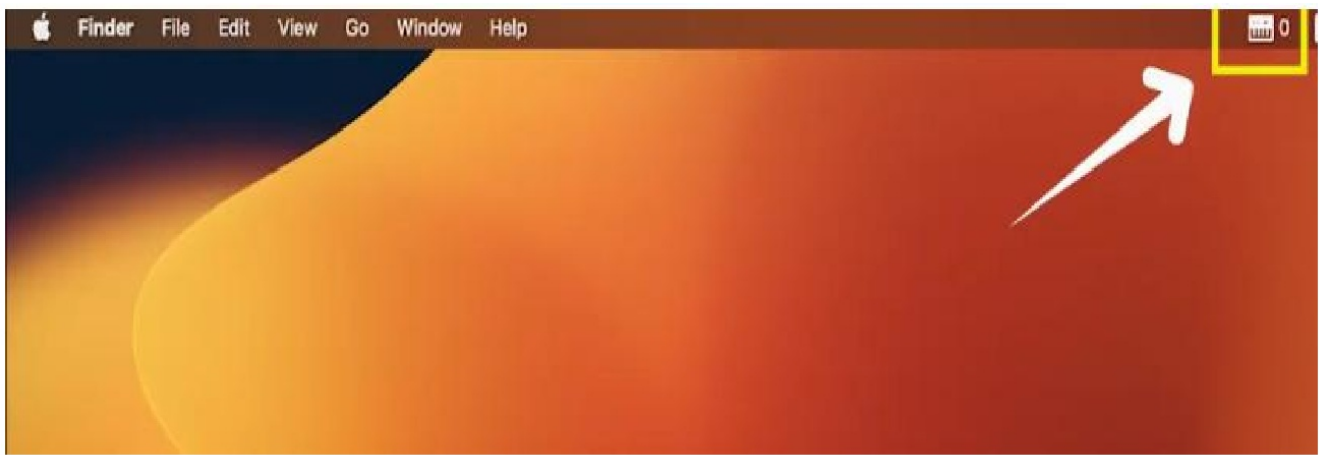
### MacRumors Forums MAC BT Connection Suspect Bluetooth Connection User Guide

#### MAC BT Connection Guide

1. Press and hold the BT button to turn on the wireless function, when the light is flashing the wireless function is activated, and then check your computer bluetooth connection.
2. Download “MidiUitls” from App store, and install it.



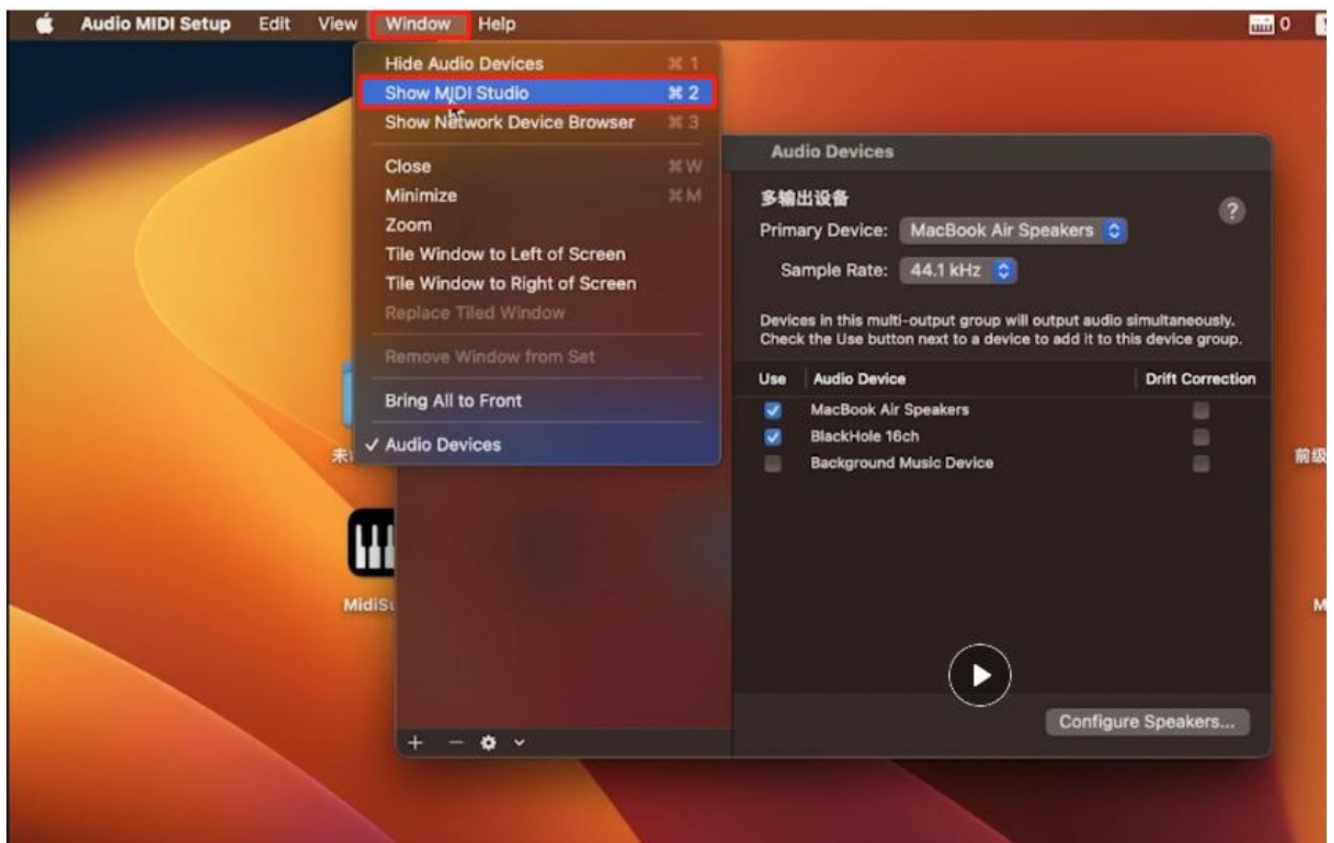
3. This icon on the left of the top indicates that the program is running but the MIDI device hasn't been connected.



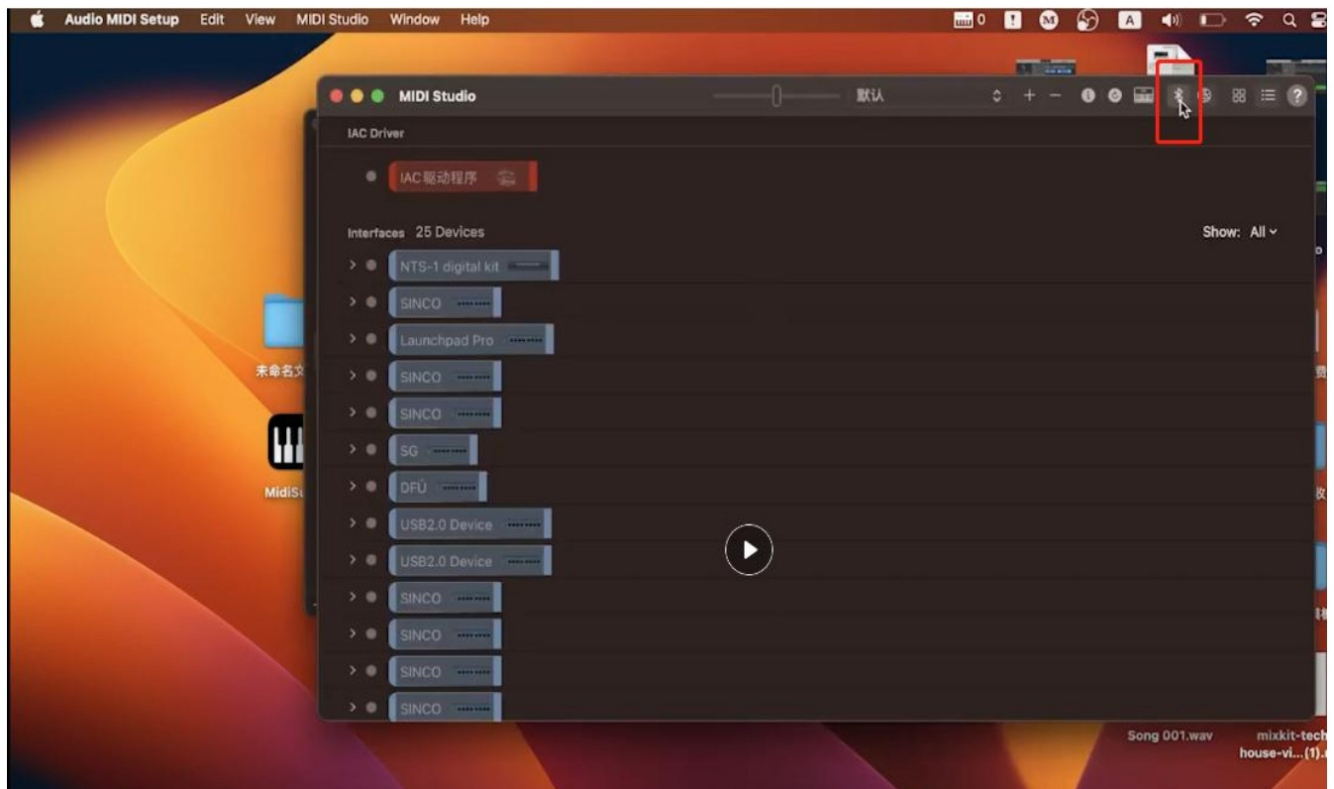
4. Open Audio MIDI setting.

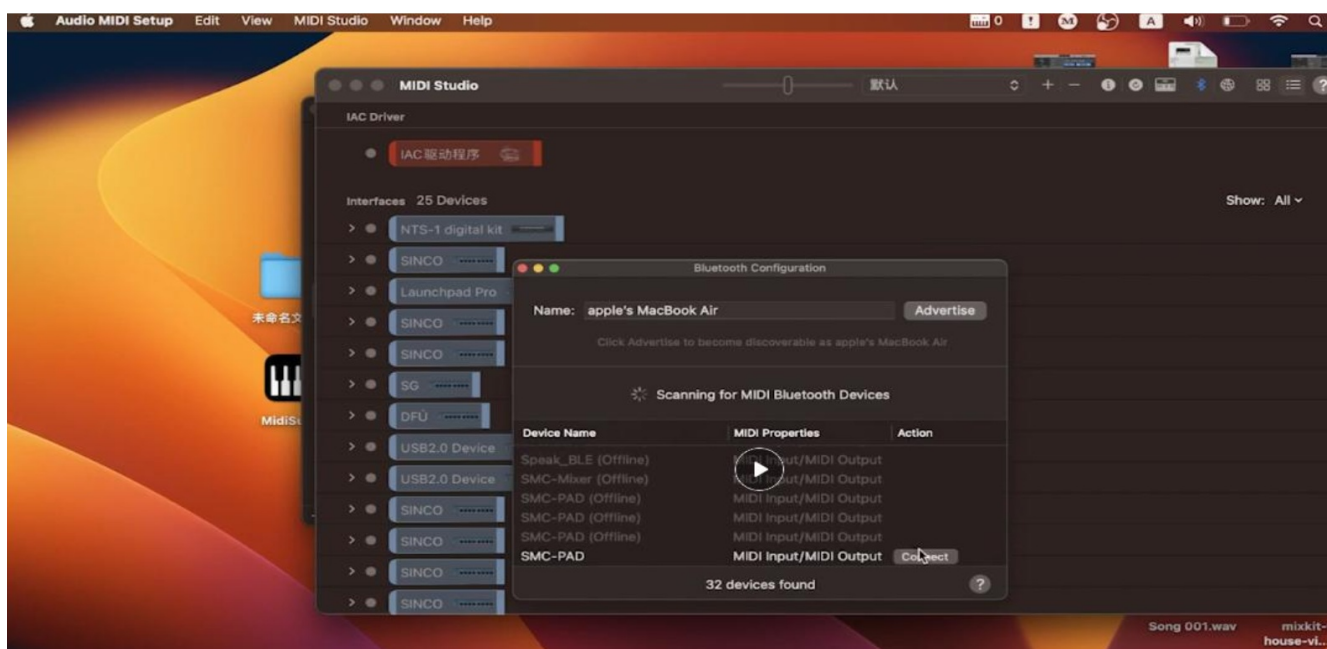
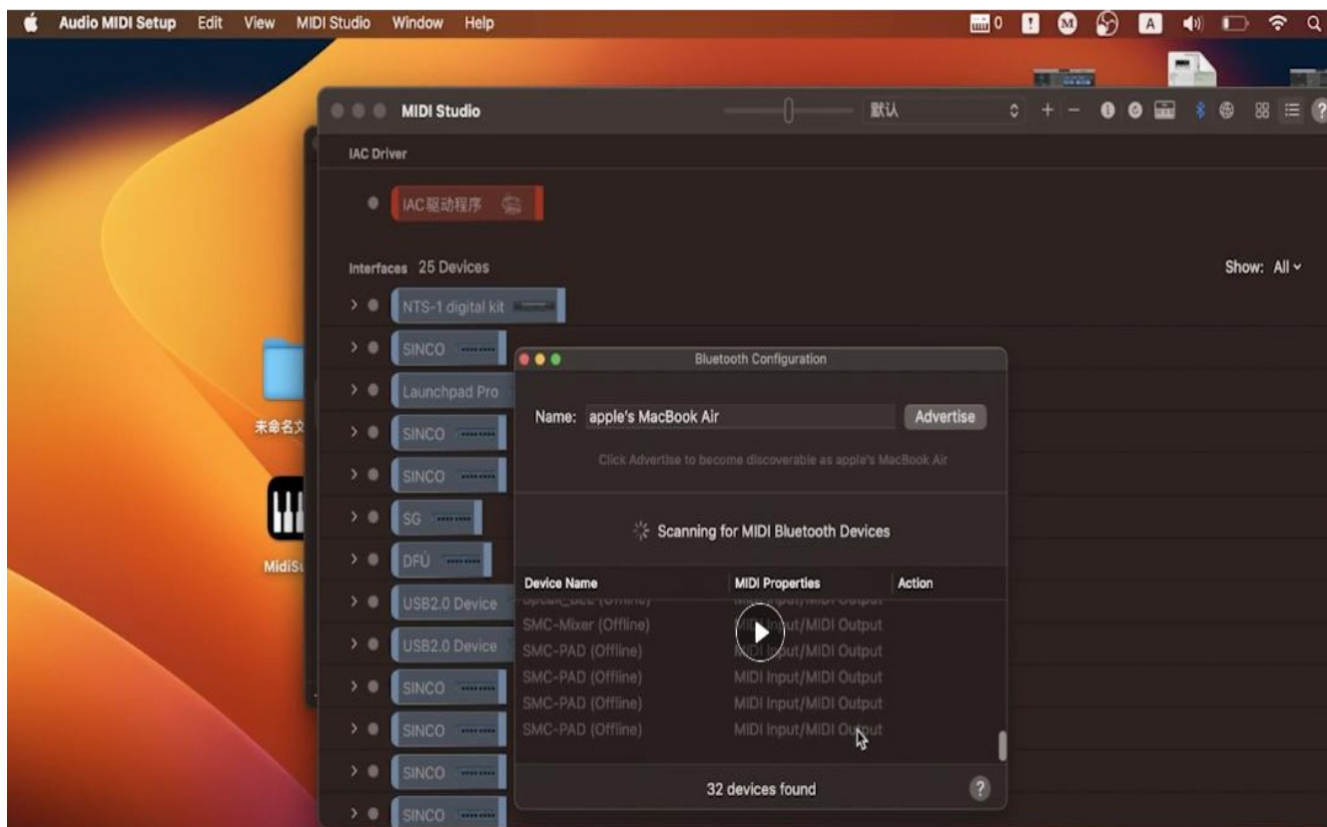


5. Click "Window" and open "Show MIDI Studio".



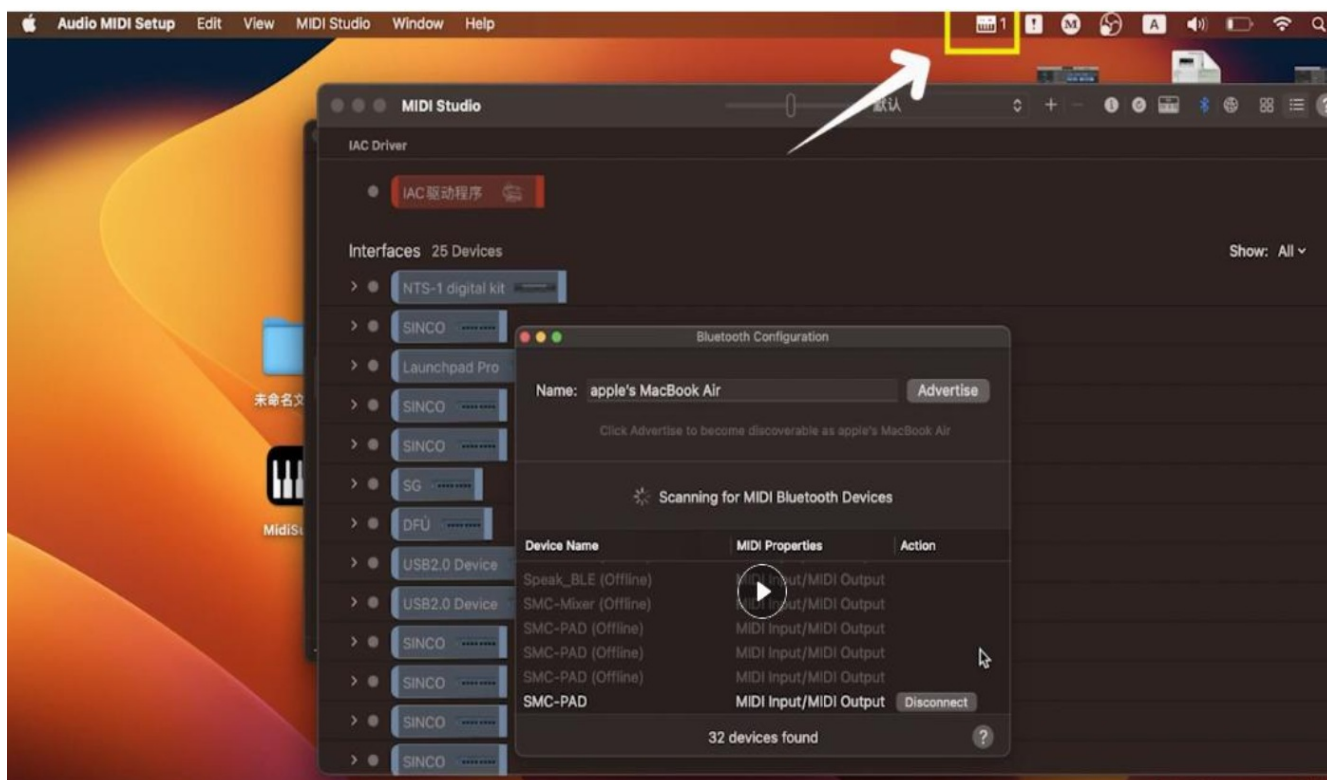
6. Click on Bluetooth Icon, and find the MIDI device you are using to connect.



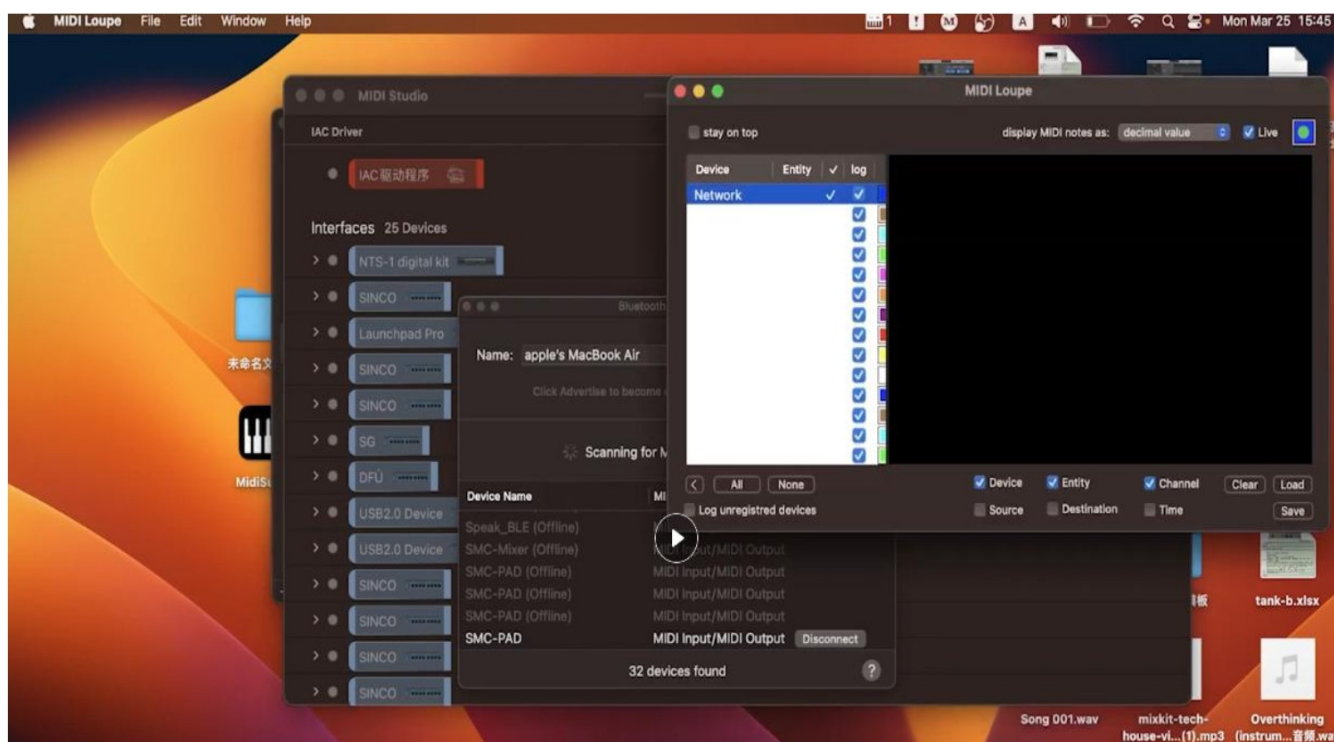


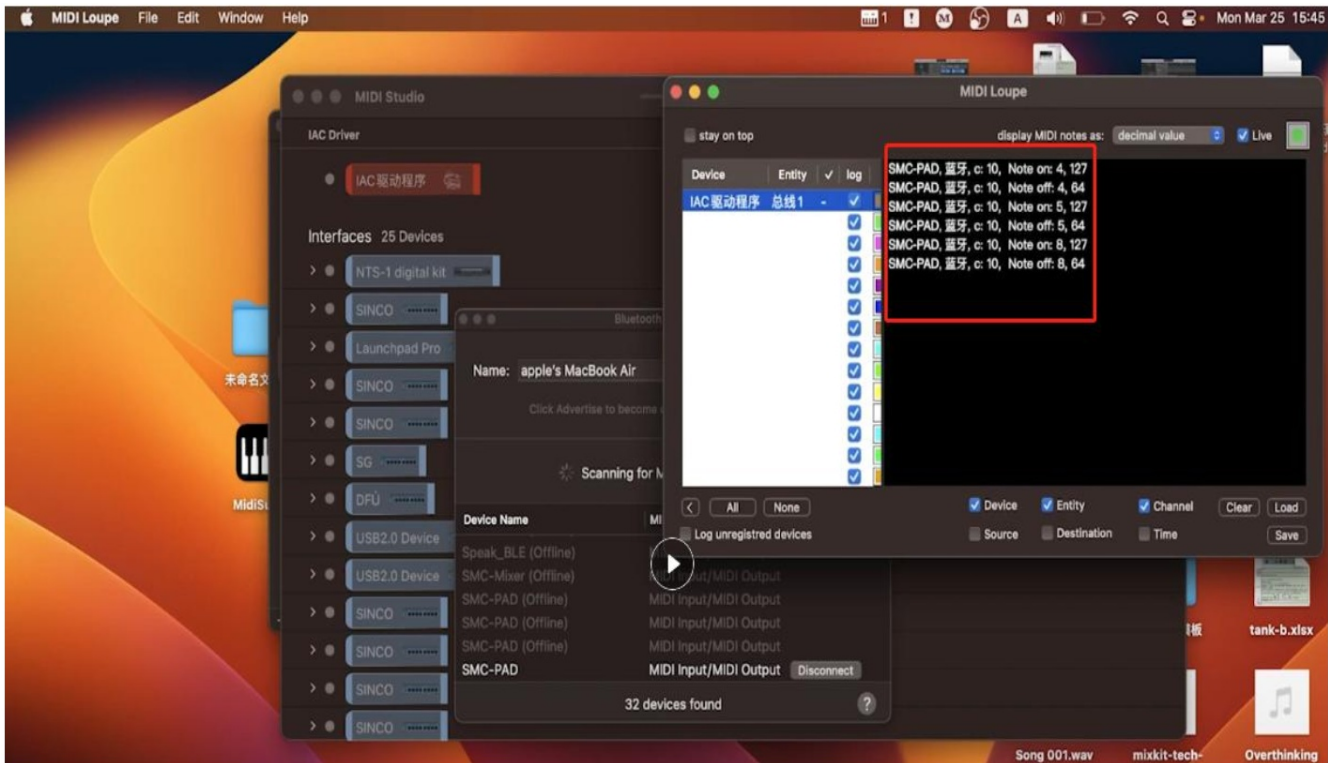
7. If the connection is successful, the icon display "1" (Indicate the device is running).





8. Open the MIDI display software. Just operate the MIDI device and check if the signal is displayed on the software, which means the connection is successful.






## Contents

- 1 Documents / Resources
- 1.1 References

## Documents / Resources

	<p><a href="#">MacRumors Forums MAC BT Connection Suspect Bluetooth Connection</a> [pdf] User Guide MAC BT Connection Suspect Bluetooth Connection, MAC BT Connection, Suspect Bluetooth C onnection, Bluetooth Connection, Connection</p>
---	--

## References

- [User Manual](#)

[Manuals+.](#) [Privacy Policy](#)

This website is an independent publication and is neither affiliated with nor endorsed by any of the trademark owners. The "Bluetooth®" word mark and logos are registered trademarks owned by Bluetooth SIG, Inc. The "Wi-Fi®" word mark and logos are registered trademarks owned by the Wi-Fi Alliance. Any use of these marks on this website does not imply any affiliation with or endorsement.