


mach power EB-AIO24I58512 Personal Computer User Manual

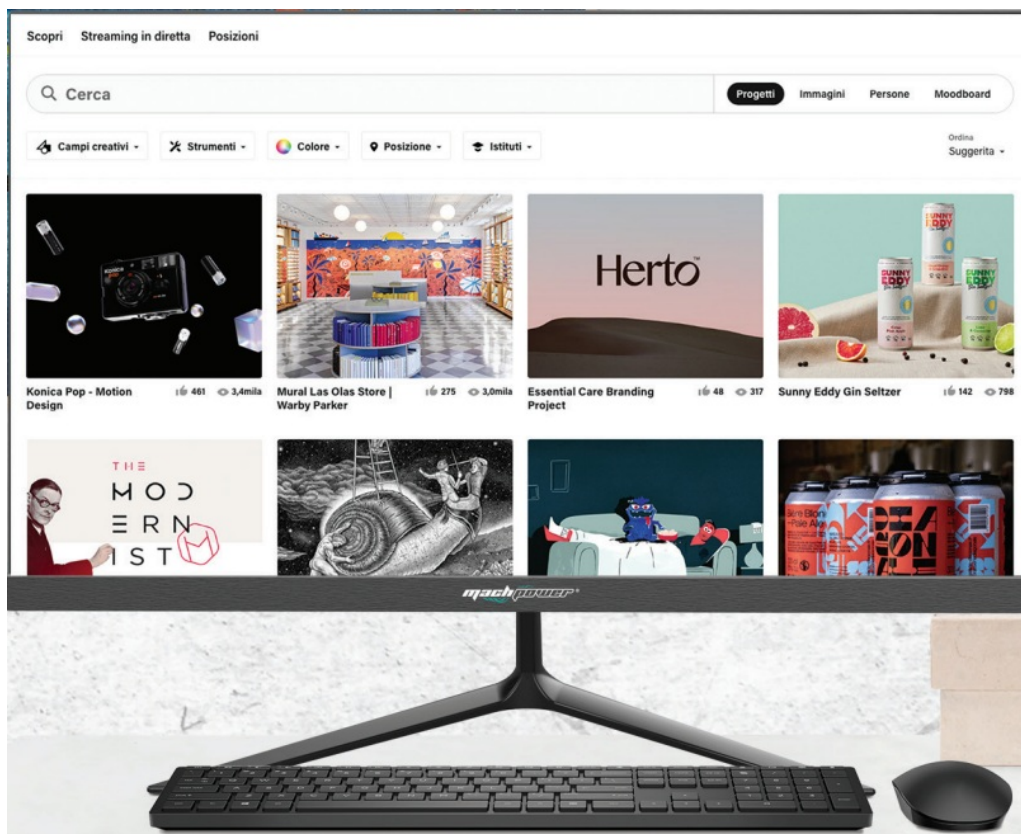
[Home](#) » [mach power](#) » mach power EB-AIO24I58512 Personal Computer User Manual 

Contents

- [1 mach power EB-AIO24I58512 Personal Computer](#)
- [2 INSTRUCTIONS TO USERS](#)
- [3 PACKAGE CONTENTS](#)
- [4 COMPOSITION OF THE ALL IN ONE PC](#)
- [5 TO START](#)
- [6 WARRANTY TERMS](#)
- [7 GUARANTEE](#)
- [8 ABOUT COMPANY](#)
- [9 Documents / Resources](#)
 - [9.1 References](#)
- [10 Related Posts](#)



mach power EB-AIO24I58512 Personal Computer



Thank you for purchasing one of our products.

Check the contents of the package. If the package is damaged or if all accessories are missing, contact your dealer as soon as possible.

INSTRUCTIONS TO USERS

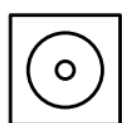
1. Ownership of this product and all parts, including accessories and software, etc. belongs to our company. Without our permission, no imitations, copies, excerpts or translations are allowed. This user manual does not have any form of warranties, position statements or other suggestions. In the event of direct or indirect loss of information or business interruption caused by any information in this user manual or by the products mentioned therein, the company and its employees assume no liability.
2. The product specifications and information mentioned in this user manual are for reference only and the content will be updated at any time without notice. If there are errors in any part of this user manual, including hardware and software, our company will not be obliged to assume no responsibility in this regard.
3. Product names discussed in this manual are for identification purposes only. These names may belong to trademarks or copyrights of other companies, they declare the following:
 - IBM. VGA and PS / 2 are registered trademarks of International Business Machinery.
 - Intel. Pentium. Pentium TT. Celeron, Pentium II, Pentium 4, etc. They are registered trademarks of Intel.
 - Microsoft. MS-DOS, Windows 9S / 98 / NT, Windows2000 / XP, etc. They are registered trademarks of Microsoft.
 - PC-Cillin and ChipAway Virus are registered trademarks of Trend Micro Inc.
 - AMI is a registered trademark of Megatrends Inc. in the United States.
 - MediaRing Talk is a registered trademark of MediaRing.
 - 3Deep is a registered trademark of E-Color.
 - Other trademarks appearing in this manual have been registered.

PACKAGE CONTENTS

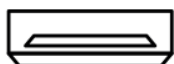
- 1 All in one PC
- 1 Manual
- 1 Power Adapter

COMPOSITION OF THE ALL IN ONE PC

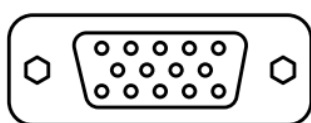
Processor	I5-10400
RAM	8G
Hard Drive	512GB SSD



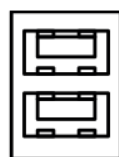
DC



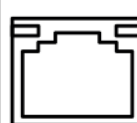
HD



VGA



USB 3.0



LAN



USB 2.0



MIC



OUT

DC	Power supply
HD	HD port input
VGA	VGA port input
USB 3.0	2 USB 3.0 ports
LAN	RJ45 interface for cable connection
USB 2.0	2 USB 2.0 ports
MIC	Microphone port input
OUT	Audio output

TO START

1. Edit account

Click the account name to change the account picture, lock the device or log out of the account. You can do this at the top of the start menu where you will find the account name with an image.

2. Power ON / OFF

Click the “Power” icon to suspend, shut down or restart the device.

3. Applications

Click All Apps to see all apps and programs listed in alphabetical order. To find an app or program, write the name in the search box.

4. Research

It is possible to search simultaneously on the device, on the cloud storage space on OneDrive and on the web,

by opening the Start menu and typing in the search box: the Windows search will do the rest. You can directly open “Search” from the taskbar; and type the word to search for.

5. Favorite apps

For quick access to apps or programs, click Start, select “All apps”, right-click the app you want to add, then select Pin to Start. Once locked, your app will appear as a tile on the right. Right-click the tile to change its size. Drag and drop to move – the Start menu will automatically resize to accommodate all apps.

6. Activity view

Switch between desktops in Windows 10 system: Click the task view (the shortcut key is Windows key + Tab key), you can create a new one at the top of the task view interface or click another desktop view to switch to that.

WARRANTY TERMS

Thank you for purchasing one of our All in one PCs

1. Check the contents of the package by comparing it with the manual. If you have any questions, please contact your dealer. Check, at the time of purchase, the operation of the PC together with the retailer. Keep the “Warranty Card” and the “purchase invoice” to make use of the warranty. Due to unclear, incomplete or altered entries, this will affect or even hinder the warranty service. Keep in a safe place, in case of loss they will not be reissued.
2. The following situations are not covered by the warranty, you can choose paid services:
 - The whole machine or parts of it have exceeded the warranty period.
 - In case it has been repaired, disassembled and modified by unauthorized personnel.
 - Without valid “warranty card” and valid invoice (except those that can prove that the product is within the warranty period).
 - Change the warranty certificate without authorization.
 - The product model and serial number on the warranty card do not match the actual product.
 - Without company name, company address, production date or product certificate.
 - The product label or product number is damaged and the identity of the product cannot be effectively proven.
 - Failure or damage caused by the use of non-genuine software, third party software and viruses that have not been certified by relevant field testing and certification bodies and released publicly.
 - Machine failure or damage caused by using parts not included.
 - Failure or damage caused by other causes of force majeure and other external factors such as water infiltration, humidity, falls, collisions, improper input voltage, incorrect insertion and removal, transportation problems and other external factors.
 - The outer shell of the product is worn, cracked, scratched or painted during normal use.

Standard after-sales service and related regulations

1. The parts warranty list is explained as follows:

Type	Parts description	Warranty validity period
Main board and parts of it	The main board and parts have solidified on the main board and cannot be separated from the main board, such as CPU, memory, hard drive and power supply	1 year
PC	LCD display, radiator, wireless network card, other electrical components inside the PC (excluding materials, CD media)	1 year
External devices	Keyboard, mouse, etc. Incorrectly configured	1 year

2. The above warranty and free service are limited to parts present in the factory configuration.
3. Keep the "Warranty Card" and the purchase invoice to make use of the warranty. Store in a safe place, they will be required by assistance.
4. To the extent permitted by law, if work cannot be performed normally or data is lost due to use or maintenance of the product (all-in-one), no liability will be held for compensation.
5. If at the end of the free warranty period, the service center has not received any written notification from the user regarding defects or failures of the product and if the customer has failed to send it for repair on time and the warranty period is exceeded, will not be responsible for repairs.
6. The warranty applies only to the original purchaser of this product and does not apply to users who obtain the product through resale, loan, transfer, etc.

GUARANTEE

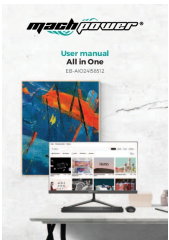
1. Due to the limitation of the manufacturing process of the LCD, some bright or dark spots may appear on the LCD. According to the national standard (ITA ISO 13406-2 Class II), less than 10 dots on each "TFT LCD" screen are normal. Warranty implementation standards (All-in-one) are not inferior to national standards.
2. The LCD screen is a fragile product. It is strictly forbidden to break or drop the screen. If there are noticeable bumps or scratches on the display case and if the LCD screen appears broken or cracked. It will not be possible to take advantage of the guarantee as the damage is caused by external factors.
3. Make regular backups of hard drive data, especially important data before sending the product for service to avoid loss.
4. For problems caused by external damage to the power supply such as: damage to the power cable, the body

- of the power supply, internal damage to the power supply, it will not be possible to make use of the warranty.
5. Please do not unplug the PC power input socket connector when the power is on, it may cause damage or breakage of the PC, etc... you will not be able to make use of the warranty.
 6. Ownership of components that are replaced by repairs during the warranty period belongs to the company.
 7. If your product needs to be updated, please update it by going to your dealer. Please do not disassemble and upgrade without permission. Once disassembled, the company reserves the right not to provide free assistance.
 - Unless otherwise specified, the warranty includes all original hardware components. The Company is not responsible for the loss or damage of programs and data. If the component configured by the dealer fails, consult the dealer to resolve it.
 - The following are not part of the warranty: free gifts, pre-installed software, random manual and warranty card.



ABOUT COMPANY

- For any information and product updates> visit our website www.machpower.it
- Mach Power® is a registered trademark
- All rights reserved

Documents / Resources

	<p>mach power EB-AIO24I58512 Personal Computer [pdf] User Manual EB-AIO24I58512 Personal Computer, EB-AIO24I58512, Personal ComputerComputer</p>
-------------------------------------------------------------------------------------	----------------------------------------------------------------------------------------------------------------------------------------------------------------------

References

-  [Microsoft – Cloud, Computers, Apps & Gaming](#)
-  [Mach Power Sicurezza, Networking, Information Technology, Health & Clean, Materiale Elettrico - Mach Power](#)