



# MACALLY BTTVKEY Quick Switch Bluetooth TV Keyboard with Touchpad for Three Devices User Guide

[Home](#) » [MACALLY](#) » **MACALLY BTTVKEY Quick Switch Bluetooth TV Keyboard with Touchpad for Three Devices User Guide** 

## Contents

- [1 MACALLY BTTVKEY Quick Switch Bluetooth TV Keyboard with Touchpad for Three Devices](#)
- [2 Introduction](#)
- [3 Package Contents](#)
- [4 System Requirements](#)
- [5 Macally Product Information](#)
- [6 Macally Product Information](#)
- [7 Warranty](#)
- [8 Hardware Basics](#)
- [9 Use of Fn key](#)
- [10 Important notes:](#)
- [11 Media Shortcut Keys](#)
- [12 Pairing the keyboard with Mac](#)
- [13 Pairing the keyboard with your Windows PC](#)
- [14 Pairing the keyboard with iPad/iPhone](#)
- [15 Pairing the keyboard with your Android Smartphones and Tablets](#)
- [16 Pairing the keyboard with your Chrome OS](#)
- [17 Pairing the keyboard with your smart TV](#)
- [18 One EXTRA Year of Warranty \\*Free On Us\\*](#)
- [19 Documents / Resources](#)
- [20 Related Posts](#)

**MACALLY**

**MACALLY BTTVKEY Quick Switch Bluetooth TV Keyboard with Touchpad for Three Devices**



## Introduction

Thank you for purchasing the Macally Bluetooth Keyboard for smart TV, Mac, iPhone, iPad, PC, Android Smartphones and Tablets. This keyboard supports up to three Bluetooth devices. One-touch quick switching allows you to type and switch from devices seamlessly. Whether it is doing work with a computer, sending messages on a smartphone, or enjoying videos on a tablet, it is truly the only keyboard that you need for all your applications. This product utilizes thin keycaps with a sensitive and responsive touch which provides a more comfortable and faster typing experience. It is designed with many features and flexibility to help improve your productivity. 7-color backlit keycaps are ideal to use the keyboard in low-light environments. Before you begin using this product, be sure to read this user's guide in its entirety.

## Package Contents

- BTTVKEY
- 2 "AAA" batteries

## System Requirements

- Bluetooth equipped smart TV, such as Amazon Fire TV/Stick, Samsung smart TV, Apple TV
- Mac OS X v10.6 to Mac OS X v11x and above
- Bluetooth equipped PC, Windows 7/8/10, and Chrome OS
- iPhone, iPad/ Pro, and iPad mini
- Most Android devices (Smartphones and Tablets)

## Macally Product Information

### Technical Support

Please E-mail us at [techsupport@macally.com](mailto:techsupport@macally.com), or call us at 1-909-230-6888 Monday to Friday, 8:30 AM to 5:30 PM, Pacific Standard time

## Macally Product Information

This manual is furnished under license and may be used or copied only in accordance with the terms of such

license.

Except as permitted by such license, no part of this publication may be reproduced, stored in a retrieval system, or transmitted, in any form or any means, electronic, mechanical, recording, or otherwise, including translation for another language or format, without the prior written permission of Macally Peripherals.

The content of this manual is furnished for informational use only, is subject to change without notice, and should not be construed as a commitment by Macally Peripherals. Macally Peripherals assumes no responsibility or liability for any errors or inaccuracies that may appear in this book.

Macally is a trademark of the Mace Group, Inc. All other product names, trademarks and registered trademarks in this document are the property of their respective holder.  
Copyright© 2021 by Macally Peripherals

### **FCC Information**

This device complies with part 15 of the FCC Rules. Operation is subject to the following two conditions: (1) this device may not cause harmful interference and (2) this device must accept any interference received, including interference that may cause undesired operation.

### **Warranty**

Macally peripherals warrant that this product will be free from defects in title, materials and manufacturing workmanship for two years from the date of purchase. If the product is found to be defective then, as your sole remedy and as the manufacturer's only obligation, Macally will repair or replace the product. This warranty shall not apply to products that have been subject to abuse, misuse, abnormal electrical or environmental conditions, or any condition other than what can be considered normal use.

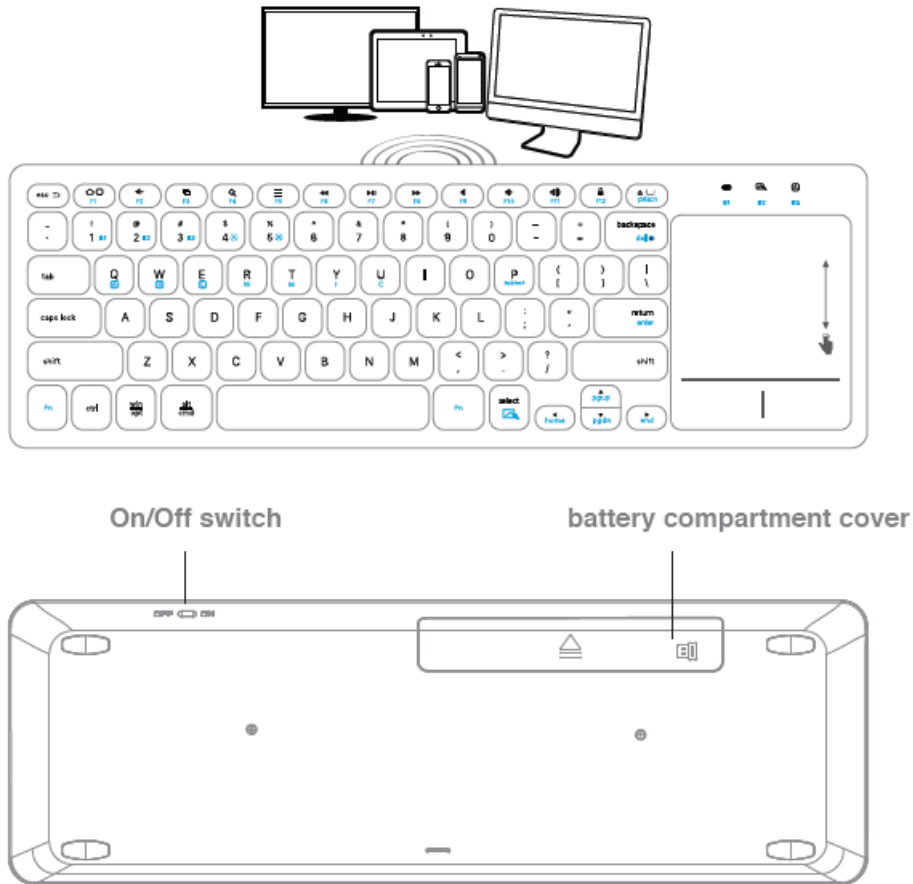
### **Warranty Disclaimers**

Macally Peripherals makes no other warranties, express, implied or otherwise, regarding the BTkey, and specifically disclaims any warranty for merchantability or fitness for a particular purpose. The exclusion of implied warranties is not permitted in some states and the exclusions specified herein may not apply to you. This warranty provides you with specific legal rights. There may be other rights that you have that vary from state to state.

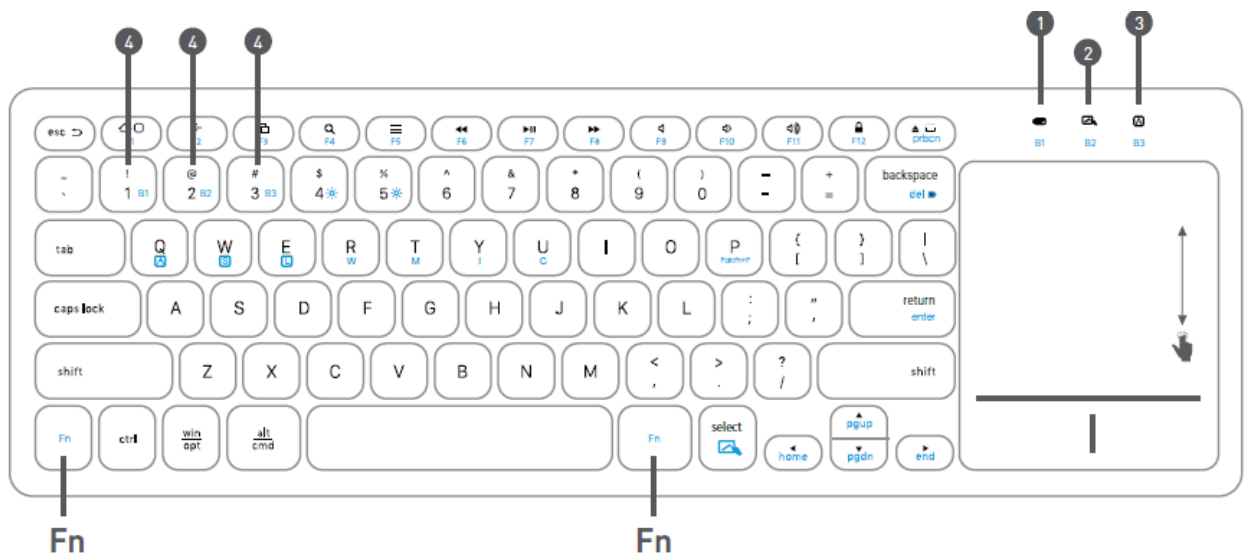
### **Limitation of Liability**

The liability of Macally Peripherals arising from this warranty and sale shall be limited to a refund of the purchase price. In no event shall Macally Peripherals be liable for costs of procurement of substitute products or services, or for any lost profits, or for any consequential, incidental, direct, or indirect damages, however, caused and on any theory of liability, arising from this warranty and sale. These limitations shall apply notwithstanding any failure of essential purpose of any limited remedy. VI.1.

## Hardware Basics



1. Bluetooth device 1 indicator: blue Low battery indicator: flashing red
  2. Bluetooth device 2 indicators: blue Touchpad lock indicator: red
- Please note: LED will show purple color when both blue and red lights are on simultaneously;
3. Bluetooth Device 3 indicator: blue Caps lock indicator: red



## Use of Fn key

1. Press Fn with one of the Bluetooth device keys, B1, B2, and B3 to select a Bluetooth device to use the keyboard
2. Press the Fn key with a dual-function key to perform F1 to F12, PrtScn, del, enter, home, end, pgup, pgdn,

keys.

3. Press Fn and P keys simultaneously to start pairing mode in the selected Bluetooth device channel.
4. Press Fn and Select key to disable and enable the Touchpad(status is indicated by Touchpad lock LED).
5. Press Fn and one of 7 OS keys (Q, W, E, R, T, Y, U) to assign the correct media/shortcut) key functionality to support your device as described below:

Fn+Q: Amazon Fire TV or Android smartphone/tablet

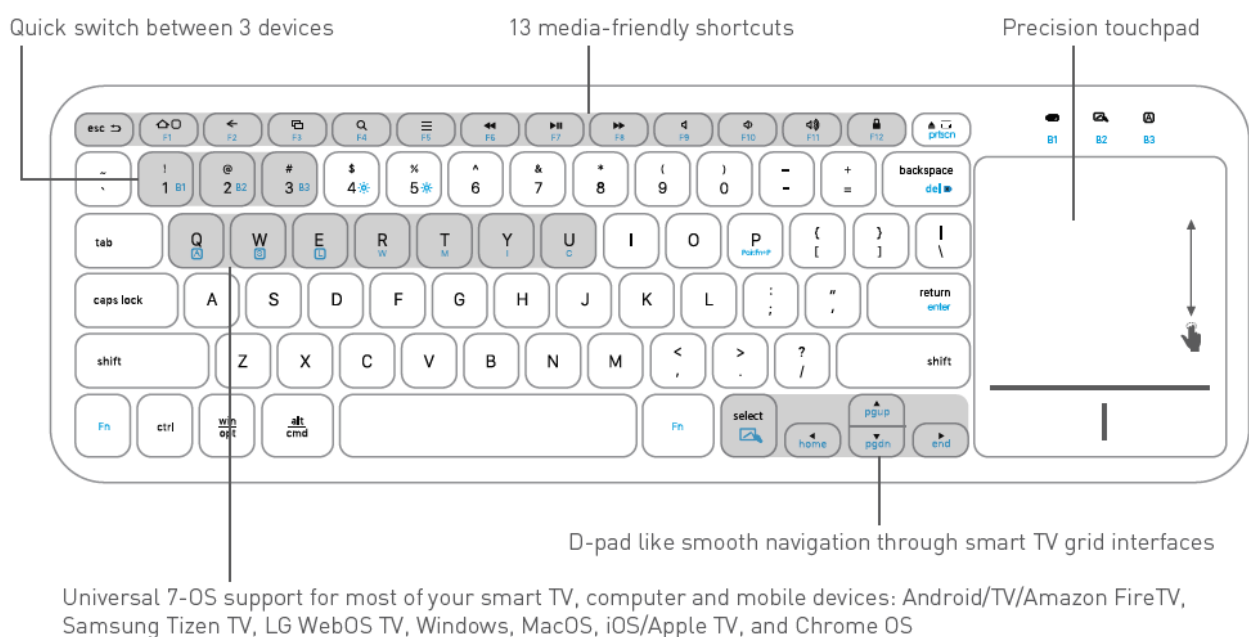
Fn+W: Samsung smart TV (Tizen OS, 2016/later model)

Fn+E: LG smart TV(WebOS, 2016/later, if it supports pairing with a third-party Bluetooth keyboard like BTTVKEY) Fn+R: Windows PC and Surface

Fn+T: all Mac models

Fn+Y: iPhone, iPad/Pro, and Apple TV

Fn+U: Chrome OS PC



## Important notes:

1. Some smart TV or application do not support mouse cursor and button click, so Touchpad has no function.
2. During pairing in a Bluetooth device(channel), the device LED(one of B1, B2 or B3) must be flashing blue, if you take too long to finish the pairing process so the device LED stops flashing blue and turns off blue light, you can press Fn and the device key (the specific one of 1, 2 or 3 key you are pairing on) to make the device LED flashing again in order to continue discovering and connecting the Macally keyboard to your device successfully.
3. After pairing a device with the Macally keyboard successfully, it is very important to press Fn and the specific OS key to select the corresponding device OS to ensure the keyboard layout (mainly cmd and opt keys for Mac OS and iOS, win and alt keys for the other 5 OS) and media shortcut definition (see the table for detail next page) are saved and memorized to work correctly for this paired device channel. Once you have done this OS selection since it is saved and memorized, next time when you switch back to a device channel, you can use the keyboard right away, there is no need to do OS selection again unless you feel the keyboard layout or media shortcuts are not working correctly for the device. If this is the case, please press Fn and the corresponding OS key simultaneously for 3 seconds until all 3 blue LEDs flash together to confirm and finish.

## Media Shortcut Keys

List of shortcut keys and what commands or applications are assigned to under each OS. Please note, some media shortcuts simply do not have a function assigned to work by certain OS, especially smart TV

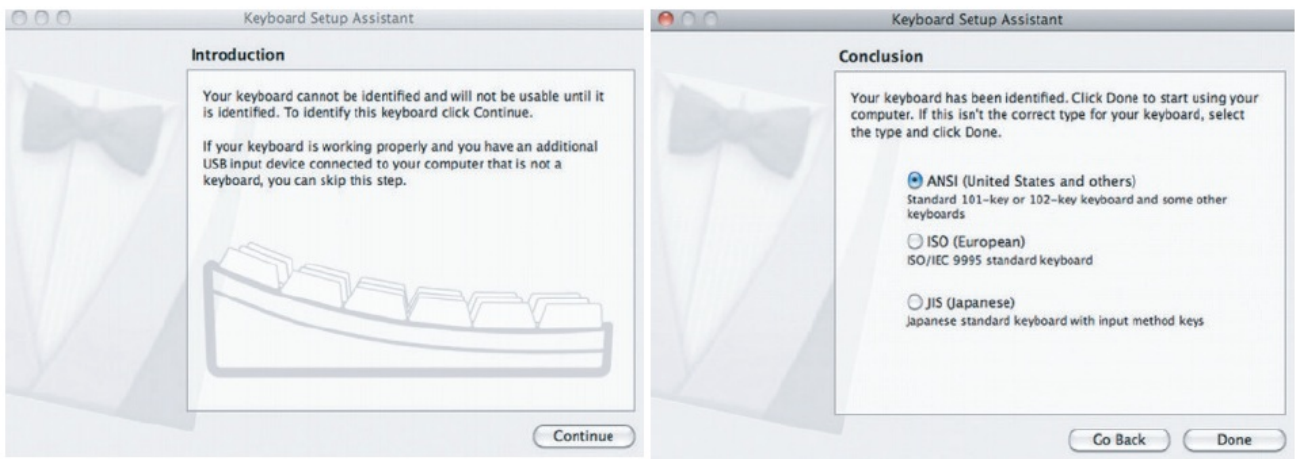
short cut	Function	Android mobile/Fire TV	Samsung TV (Tizen)	L6 TV (WebOS)	Windows	Mac	iOS/Apple TV	Chrome OS
esc ↵	Esc/Back a level	Back a level	Esc	Esc	Esc	Esc	Esc	Esc
🏠	Home page/home screen	Home page	F5	Win	Home page	Ctrl+up arrow	Home page	Home page
⬅️	Back page/Back	Back page	Esc	Backspace	Back page	Cmd+left arrow	Cmd+left arrow	Back page
📑	App menu	Win+Tab (not supported)	F7	Win	Win+Tab	Cmd+Tab	Double Home page	F5
🔍	Search	Search	Search	Search	Search	Cmd+spacekey	Search	Search
☰	Menu	Menu (not supported)	Win	(not supported)	Menu	F12	Home page	Menu
⏮️	Previous track	Previous	Left arrow	Left arrow	Previous	Previous	Previous	Previous
⏸️	Play/pause	Play/pause	Enter	Enter	Play/pause	Play/pause	Play/pause	Play/pause
⏭️	Next track	Next	Right arrow	Right arrow	Next	Next	Next	Next
🔇	Mute	Mute	F8	Mute	Mute	Mute	Mute	Mute
🔊	Volume down	Volume down	F9	Volume down	Volume down	Volume down	Volume down	Volume down
🔊	Volume up	Volume up	F10	Volume up	Volume up	Volume up	Volume up	Volume up
🔒	Logout/turn off device screen	Logout/turn off	Logout/turn off	Logout/turn off	Logout/turn off	Logout/turn off	Logout/turn off	Logout/turn off
🖱️	Eject/on-screen keyboard	(not supported)	(not supported)	(not supported)	(not supported)	Eject	Open and close iOS on-screen keyboard	(not supported)
PrtScn	Print Screen/screen capture	PrtScn	(not supported)	(not supported)	PrtScn	Cmd+shift+3	Cmd+shift+3	Ctrl+F5

## Pairing the keyboard with Mac

1. After a Bluetooth device(for Mac) is selected, for example B1, the first time use, pairing is required. Press Fn and P keys together to set the keyboard in pairing mode, the device LED flashes blue.



2. Please click the Bluetooth icon in your computer's menu bar located in the upper right corner of your screen. Make sure Bluetooth is turned to On then select "Open Bluetooth Preferences ..." in the drop-down menu.
3. Bluetooth window displays a found Macally Bluetooth keyboard, please click on the "Connect" button next to it.
4. Once pairing is finished, the Bluetooth keyboard shows "Connected" status.
5. When Mac prompts you a message, "The keyboard can not be identified..." please follow Keyboard Setup Assistant on the screen to identify the keyboard.



6. Select the ANSI option, and click on Done button to finish and close the Keyboard Setup Assistant window.
7. Next, press FN and T keys together for 3 seconds(until 3 LEDs flash blue simultaneously) to select the MacOS for the paired Mac computer. It is ready to use the keyboard.

## Pairing the keyboard with your Windows PC

1. After a Bluetooth device(for Windows PC) is selected, for example B2, the first time use, pairing is required. Press the Fn and P keys together to set the keyboard in pairing mode, the device LED flashes blue.
2. In Windows 10, for example, open the Settings from the Windows menu or by pressing Win and I keys. Then click to open the Devices icon.
3. Under Devices, select Bluetooth & other devices. Click on Add Bluetooth and other devices, and select Bluetooth to add this keyboard. Make sure the keyboard Bluetooth device LED is still flashing and discoverable.
4. Once you see the Macally Bluetooth Keyboard appear, double click on it to connect. Windows will notify you when the keyboard is ready to use.
5. Next, press the FN and R keys together for 3 seconds(until 3 LEDs flash blue simultaneously) to select the Windows OS for the paired Windows PC. It is ready to use the keyboard.

Please note that if you are using a different Windows OS version, the pairing procedures may be different slightly.

## Pairing the keyboard with iPad/iPhone

1. After a Bluetooth device(for iPad or iPhone) is selected, for example B3, the first time use, pairing is required. Press Fn and P keys together to set the keyboard in pairing mode, and the device LED flashes blue.
2. Bring your iPad or iPhone near the keyboard. Open up "setting" then Bluetooth".
3. Turn on Bluetooth, under the "Bluetooth" menu, it will auto search for the new Bluetooth devices....
4. Once it finds and displays the Macally Bluetooth keyboard model, select it to pair with Macally Bluetooth Keyboard.
5. After pairing is successfully completed, it will show the Macally keyboard model "Connected" status.
6. Next, press FN and Y keys together for 3 seconds(until 3 LEDs flash blue simultaneously) to select the iOS for the paired iPhone and iPad/Pro. It is ready to use the keyboard.

## Pairing the keyboard with your Android Smartphones and Tablets

1. After a Bluetooth device(for Android) is selected, for the first time use, pairing is required.  
Press Fn and P keys together to set the keyboard in pairing mode, the device LED flashes blue.
2. On an Android device, open Settings, then open "Connected devices" to find Bluetooth. Touch the Bluetooth line to enter the Bluetooth screen, make sure the Bluetooth is turned on, then touch on "Pair new device", and your Android device starts searching for a new device.
3. Make sure the Macally keyboard device LED is still flashing blue(in pairing mode), once you see the Macally Bluetooth Keyboard model appears, select it and it will automatically pair to your Android device. You can see the "Connected" status for the Macally keyboard.
4. Next, press FN and Q keys together for 3 seconds(until 3 LEDs flash blue simultaneously) to select the Android OS for the paired Android smartphones and tablets. It is ready to use the keyboard.

Please note that if you are using a different Android OS version, the pairing procedures may be different slightly.

### **Pairing the keyboard with your Chrome OS**

1. After a Bluetooth device(for Chromebook) is selected, for the first time use, pairing is required. Press Fn and P keys together to set the keyboard in pairing mode, and the device LED flashes in blue.
2. Log into Chrome OS PC, move the mouse cursor to the bottom right corner of the screen to display settings, then click to select Bluetooth, make sure the Bluetooth is turned on, and search for a new Bluetooth device to pair. Scroll down to the "Unpaired device" list to find the Macally Bluetooth keyboard model, and click on the Macally keyboard model to connect. Once connected, the flashing device LED will become solid blue.
3. Next, press FN and U keys together for 3 seconds(until 3 LEDs flash blue simultaneously) to select the Chrome OS for the paired Chrome OS PC. It is ready to use the keyboard.

### **Pairing the keyboard with your smart TV**

1. After a Bluetooth device(for smart TV) is selected, for the first time use, pairing is required. Press Fn and P keys together to set the keyboard in pairing mode, and the device LED flashes in blue. Bring the Macally keyboard within 1FT to your smart TV.
2. There are many smart TV brands and models in the market and households, it is impossible to cover them all in this manual, we show you a few examples below as general guidelines to pair the Macally keyboard with your smart TV.
  1. Amazon Fire TV/Stick: Use your Fire TV Remote to open Settings, go to Controller & Bluetooth Devices, open Other Bluetooth Devices then Add Bluetooth Devices, when Fire TV searches and shows the Macally keyboard model BTTVKEY, use the Remote to select it to pair and connect. Then press Fn and Q keys together for 3 seconds to select Android OS for Amazon Fire TV.
  2. Samsung smart TV(Tizen OS, year 2016 and later): On your Samsung smart TV Remote, press Settings button to open settings menu, select General, then enter External Device Manager, and Input Device Manager, select Bluetooth Device List, it starts searching for a new keyboard, and should find and list the Macally keyboard model BTTVKEY(Pair needing), select Pair and Connect to finish. Press Fn and W keys together for 3 seconds to select Samsung Tizen OS for your Samsung smart TV.
  3. LG Smart TV(WebOS, the year 2016 and later): Please use your LG smart TV Remote to open Settings, and navigate the LG menu on the screen to determine whether it supports any third-party Bluetooth keyboard pairing and connection or not. If your LG smart TV allows you to pair and connect this Macally



Bluetooth keyboard BTTVKEY successfully, the final step is to press Fn and E keys together for 3 seconds to select LG WebOS for your LG smart TV.

4. Apple TV: 5th Gen as an example, use your Apple TV Remote to open Settings, go to Remotes and Devices, open Bluetooth, scroll down to OTHER DEVICES where Apple TV is searching for new device and listing the Macally keyboard model BTTVKEY, use the Remote to select BTTVKEY to pair and connect. Once BTTVKEY shows Connected, press Fn and Y keys together for 3 seconds to select iOS/Apple TV for your Apple TV.
3. Once connected, the flashing device LED will become solid blue. It is ready to use the keyboard with your smart TV.

### **One EXTRA Year of Warranty \*Free On Us\***

Thank you for choosing Macally! Now that you have joined the Macally community, we would like to extend our services by offering you our exclusive warranty program. Register your product within 14 days of purchase and you will automatically be enrolled in our Exclusive VIP Warranty Program. This is a golden ticket but only for 14 days! So don't forget to enter your product info and register at: [vip.macally.com](http://vip.macally.com)

#### **EXCLUSIVE VIP WARRANTY:**

- One Extra Year of Free Warranty  
(That's a total of 2 Years / No Hassles or Worry!)
- Automatically Applies to All Future Macally Purchases.
- Privy to Special Discounts and Offers.
- Prioritized with Faster Tech and Customer Service Support.

DON'T FORGET – you only have 14 days – Go to: [vip.macally.com](http://vip.macally.com)

#### **AND REMEMBER:**



If you have any questions, comments, or concerns, please contact us at: [techsupport@macally.com](mailto:techsupport@macally.com) or call 1 (909) 230 – 6888, M-F: from 8:30 a.m. to 5:30 p.m. PST (Pacific Standard Time)

### **Documents / Resources**



**[MACALLY BTTVKEY Quick Switch Bluetooth TV Keyboard with Touchpad for Three Devices \[pdf\] User Guide](#)**  
BTTVKEY Quick Switch Bluetooth TV Keyboard with Touchpad for Three Devices, BTTVKEY, Quick Switch Bluetooth TV Keyboard with Touchpad for Three Devices