



[Home](#) » [MACALLY](#) » **MACALLY BTSLKEYCB Bluetooth Color Keyboard and Mouse Combo**
Instruction Manual 

Contents [[hide](#)]

- [1 MACALLY BTSLKEYCB Bluetooth Colour Keyboard and Mouse Combo](#)
- [2 PACKAGE CONTENTS](#)
- [3 SYSTEM REQUIREMENTS](#)
- [4 HARDWARE BASICS](#)
- [5 BLUETOOTH PAIRING INSTRUCTIONS](#)
- [6 SWITCHING BETWEEN MULTIPLE DEVICES](#)
- [7 CHARGING THE KEYBOARD AND THE MOUSE](#)
- [8 SHORTCUTS & FUNCTION KEYS](#)
- [9 SAFETY INSTRUCTIONS](#)
- [10 SPECIFICATIONS](#)
- [11 Tech support](#)
- [12 FCC STATEMENT](#)
- [13 FAQ](#)
- [14 Documents / Resources](#)
 - [14.1 References](#)



MACALLY BTSLKEYCB Bluetooth Colour Keyboard and Mouse Combo



Welcome to the Macally family and thank you for purchasing the BTSLKEYCB.

Our mission is to deliver aesthetically pleasing, high-quality and affordable peripherals and accessories to satisfied customers. We do that by creating products that are both innovative and practical but most importantly, easy-to-use. If you have any questions, feedback, or just want to say hi, please reach out to us at techsupport@macally.com or on any one of our social media channels. Don't forget to share your setup with us using #macally and follow us for to get exclusive offers.



MacallyUSA



PACKAGE CONTENTS

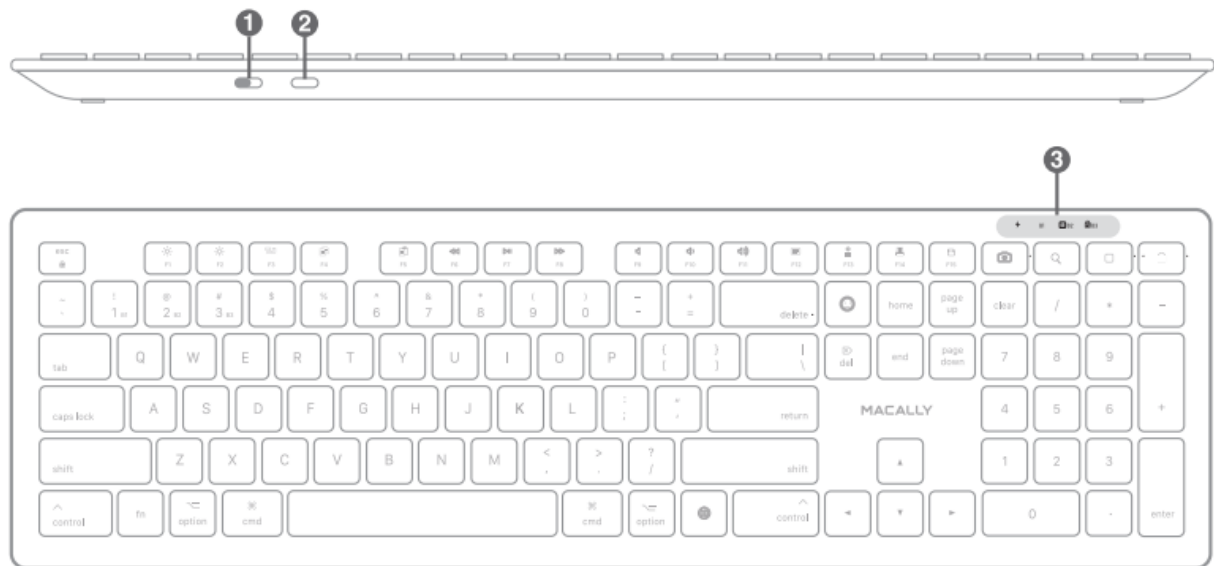
- Keyboard
- Mouse
- USB-A to USB-C charging cable
- User's Guide

SYSTEM REQUIREMENTS

- Bluetooth-enabled Mac, iPad and iPhone.
- Laptop, desktop with an available USB-A port for charging the keyboard and mouse.
- USB-A wall charger for charging the keyboard and mouse (alternative if your laptop/desktop does not have a USB-A port).

HARDWARE BASICS

Keyboard



1. On/Off switch
2. USB-C Charging Port
3. Battery LED

Battery charging:

- Red when charging; Off when fully charged.
- Flashing red when battery level is low, time to charge.

BI LED

Bluetooth channel 1:

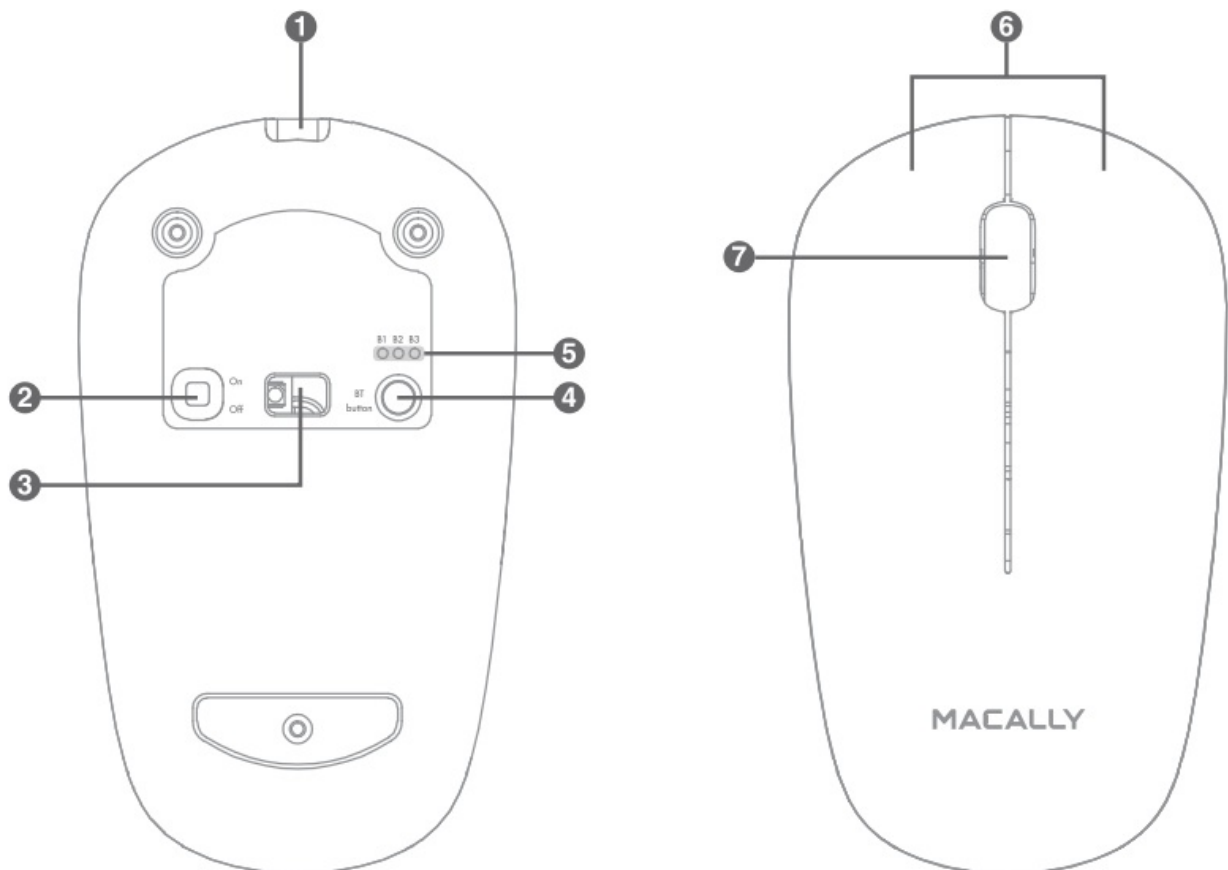
- Flashing blue — Pairing mode.
- Solid blue – Connected.
- B2/Caps Lock LED
 - Bluetooth channel 2:
 - Flashing blue — Pairing mode.
 - Solid blue – Connected.

- caps Lock LED:
 - Red — Caps lock enabled.
 - Off — Caps lock disabled.
- B3/Fn Lock
 - Bluetooth channel 3:
 - Flashing blue — Pairing mode.
 - Solid blue – Connected.
 - Fn Lock:
 - Red — When Fn Lock is activated by pressing fn and esc keys together.
 - Off — When Fn lock is deactivated

NOTE

When an LED hole has both blue and red LED color emitting, you will see a purple color effect.

Mouse



1. USB-C Charging Port

2. On/Off Switch
3. Optical Sensor
4. BT button: Pair and Bluetooth Channel Switch Button
5. Bluetooth Channel Indicator
6. Left and Right Click
7. Scroll Wheel

BLUETOOTH PAIRING INSTRUCTIONS

Keyboard



Take a look at key numbers 1, 2, and 3 on the number row which are labelled B1, B2, and B3. These are the 3 Bluetooth channels that are used to pair the keyboard to your devices. To pair your keyboard to a Bluetooth-enabled device (Mac, iPad or iPhone) make sure the keyboard is on and charged, then follow the Steps below:

NOTE

We will use Bluetooth channel 1 (B1) in these steps.

1. Open the Bluetooth settings on the device you are pairing the keyboard to (Mac, iPad or iPhone, etc).
2. Press and hold the “fn” key and the number “1” key (B1) for three seconds. This will put the keyboard into pairing mode which will cause the B1 LED on the keyboard to flash.
3. Click/tap on the keyboard input device name BTSLKEYCB that shows up on your Bluetooth settings screen to pair the keyboard. Once paired, the B1 LED should stay solid blue.

To pair the keyboard to a second device all you have to do is follow the same steps above for the other two Bluetooth channels (B2 & B3).

Mouse



To pair your mouse to a Bluetooth-enabled device (Mac, iPad or iPhone) make sure the mouse is on and charged, then follow the steps below:

NOTE

We will use Bluetooth channel 1 (B1) in these steps.

1. Open the Bluetooth settings on the device you are pairing the mouse to (Mac and iPad, etc).
2. If you haven't done so, turn the mouse on. Once on you will notice that the B1 LED is blinking steady indicating that the mouse is in pairing mode.
3. Click/tap on the name BTSLMOUSE that shows up on your Bluetooth settings screen to pair the mouse. Once paired, the B1 LED will change to solid white for about 2 seconds then turn off.

To pair the mouse to the second and third device all you have to do is press the BT

button consecutively to switch to the other two Bluetooth channels (B2 & B3) then hold down BT button for 2-3 seconds until the channel LED flashes, , then you can proceed to pair the mouse with your device.

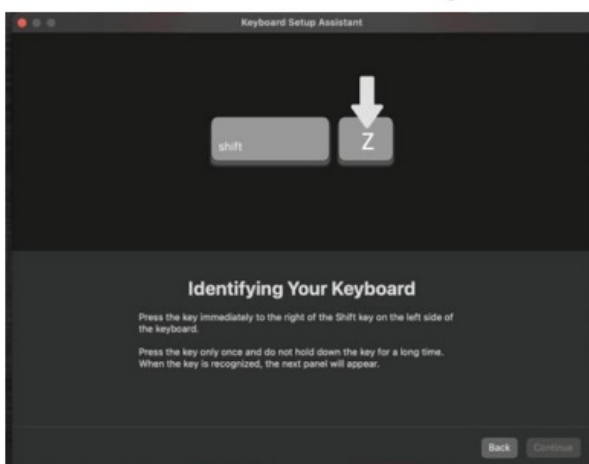
NOTE

Depending on the support of iPhone iOS, mouse cursor dot may not appear on the iPhone screen even after a successful pairing.

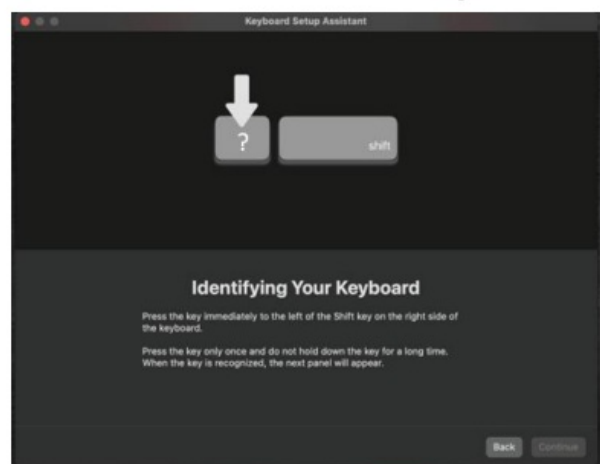
KEYBOARD SETUP ASSISTANT (MAC USERS)

When you pair a keyboard that is not immediately recognised, the Mac OS Keyboard Setup Assistant automatically opens so that you can specify the keyboard type. Please follow the onscreen instructions when prompted.

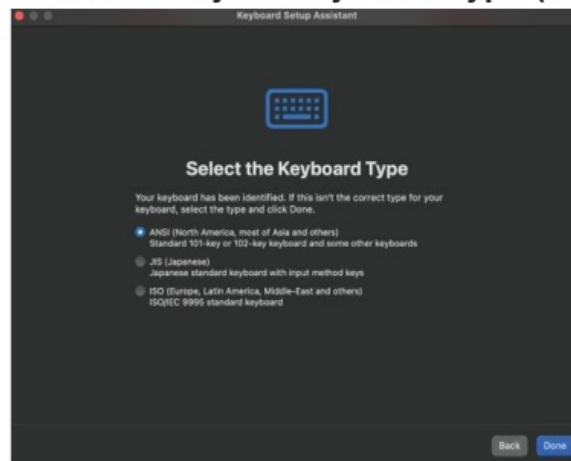
STEP1: Press the Z key



STEP2: Press the ? key



STEP3: Select your keyboard type (ANSI)



If the Keyboard Setup Assistant did not popup and you are having issues with keys not

responding or typing letters other than what's printed on the them, you will need to launch the setup assistant manually by doing the following:

1. Open your System Settings or System Preferences.
2. Select Keyboard, then look for and click "Change Keyboard Type".
3. When you see the Keyboard Setup Assistant window, click Continue and follow the onscreen instructions as shown in the image above.

SWITCHING BETWEEN MULTIPLE DEVICES

Keyboard



Once you have all your devices paired to the keyboard, switching between multiple devices can be done by simply holding the "fn" key, then pressing and releasing any of the 3 Bluetooth keys (B1, B2, B3) you want to switch to.

NOTE

Just tap B1, B2, or B3 while holding fn. Do not hold them longer than 1 second. Holding them down too long will restart a new pairing session in the current channel, thus losing the current pairing with the device. Reconnect time may vary depending on the connected device's Bluetooth version.

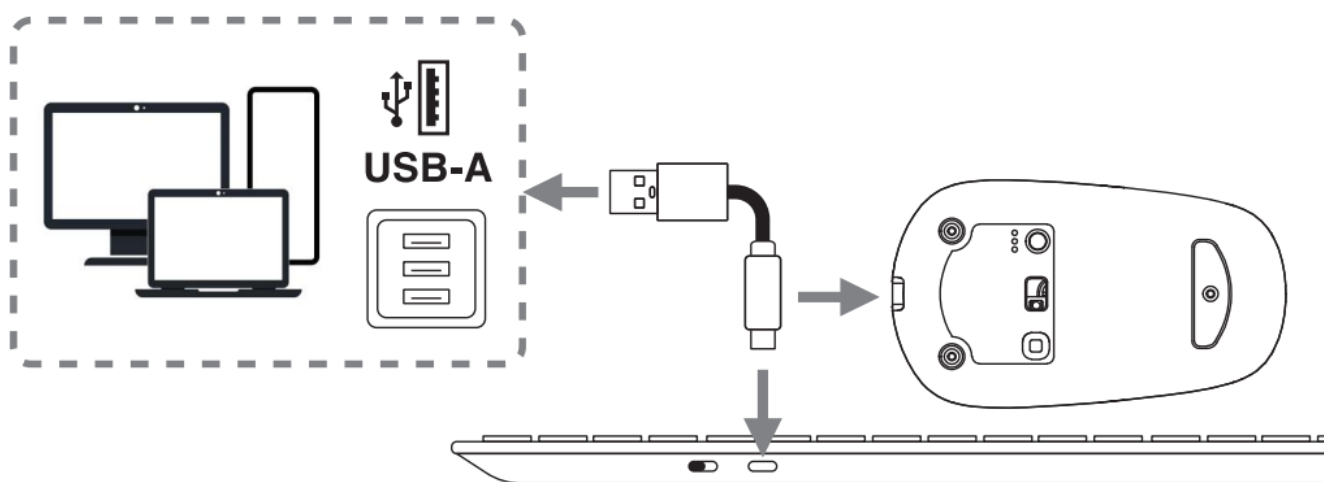
Mouse

Once you have all your devices paired to the mouse, switching between multiple devices can be done by briefly pressing and releasing the BT button. Each brief press will switch to the next BT Channel. Once connected to the previously paired device, the channel

LED will stay solid white for 2 seconds, then turn off.



CHARGING THE KEYBOARD AND THE MOUSE



Keyboard

To charge the keyboard, simply plug the USB-A end of the cable provided into any available USB-A port on your computer, laptop or USB wall charger and insert the USB-C end of the cable into the USB-C port located along the top right hand side of the keyboard.

NOTE

Using the cable only charges the keyboard. It does not convert keyboard into a “wired” device. Only one cable is included.

Battery charging LED:

- Red — Charging; Off when fully charged.
- Low battery — Flash red








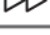

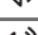
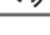




Mouse

- Charging — Red light in front of the scroll wheel, and off when full.
- Low battery — Flashing red light in front of the scroll wheel.

SHORTCUTS & FUNCTION KEYS

The keyboard's top F-row is defaulted to boot up under shortcut mode (small icons printed on the F-row keys) such as play/pause, copy, paste etc. To utilize any of the standard function keys (F1, F2, etc) simply hold the fn key followed by the function key you wish to execute. You can press fn and esc keys simultaneously to switch the keyboard to function key mode, under which Fn lock LED will turn on red. When switched, you can still utilize the shortcuts by holding down the fn key followed by the shortcut you would like to perform. Pressing fn and esc keys again will switch the keyboard back to shortcut mode.







Shortcut description

fn + esc	Switches the keyboard between shortcut mode and function key mode
	Decreases the brightness level on the screen. Please note that not all external monitors support this function.
	Increases the brightness level on the screen. Please note that not all external monitors support this function.
	Mission control
	Copy
	Paste
	Back/Previous track
	Play/Pause
	Forward/Next track
	Mute
	Volume down
	Volume up
	On-Screen Keyboard On/Off for iPad and iPhone, or Eject for Mac
	Force Quit Applications (Mac only)
	Print
	Save

SHORTCUTS THAT DON'T NEED fn KEY

There are some shortcuts that always work under either Shortcut or Function mode.

Shortcut description

	Screen Shot
	Search
	Home (For iPad and iPhone OS only)
	Lock screen
	Emoji window popup
	Change input language

IMPORTANT NOTES

- Not all shortcuts are universal and may act differently on certain devices.
- All standard function keys (F1-F15) have a special function defined by the connected operating system, or by a currently running program.

SAFETY INSTRUCTIONS

Please read the following carefully. Incorrect use of this product may result in reduced performance, permanent damage and void your warranty.

- Keep this device away from liquid, humidity and moisture.
- Operate this device only within the specific temperature range of 0°C (32°F) to 50°C (104°F)
- Please refrain from taking the device apart. Doing so will void your warranty.
- Do not dispose this product in the garbage. Take it to your local recycling center.

SPECIFICATIONS

- Switches Scissor-key
- Battery Size (Keyboard/Mouse) 500mAh each
- Bluetooth sleep time: Always connected for the keyboard; 2 hours sleep time for the mouse
- Charging Port (Keyboard) USB-C
- Charging Port (Mouse) USB-C

Tech support

Tech support hours are from 9:00 AM to 5:00 PM Monday through Friday (Pacific Standard Time).

- E-Mail: techsupport@macally.com
- Phone: [909-230-6888](tel:909-230-6888)

Warranty

Macal/y Peripherals warrants that this product will be free from defects in title, materials and manufacturing workmanship for one year in North America from the date of the

purchase. If the product is found to be defective then, as your sole remedy and as the manufacturer's only obligation, Maca//y will repair or replace the product. This warranty is exclusive and is limited to the product that this user's guide came with. This warranty shall not apply to products that have been subjected to abuse, misuse, abnormal electrical or environmental conditions, or any condition other than what can be considered normal use. The liability of Maca//y Peripherals arising from this warranty and sale shall be limited to a refund of the purchase price. In no event shall Maca//y Peripherals be liable for costs of procurement of substitute products or services, or for any lost profits, or for any consequential, incidental, direct or indirect damages, however caused and on any theory of liability, arising from this warranty and sale. These limitations shall apply notwithstanding any failure of the essential purpose of any limited remedy.

FCC STATEMENT

This device complies with Part 15 of the FCC Rules. Operation is subject to the following two conditions:

1. This device may not cause harmful interference, and
2. This device must accept any interference received, including interference that may cause undesired operation.

Warning: Changes or modifications not expressly approved by the party responsible for compliance could void the user's authority to operate the equipment.

NOTE: This equipment has been tested and found to comply with the limits for a Class B digital device, pursuant to Part 15 of the FCC Rules. These limits are designed to provide reasonable protection against harmful interference in a residential installation. This equipment generates uses and can radiate radio frequency energy and, if not installed and used in accordance with the instructions, may cause harmful interference to radio communications. However, there is no guarantee that interference will not occur in a particular installation. If this equipment does cause harmful interference to radio or television reception, which can be determined by turning the equipment off and on, the user is encouraged to try to correct the interference by one or more of the following measures:

- Reorient or relocate the receiving antenna.
- Increase the separation between the equipment and receiver.
- Connect the equipment into an outlet on a circuit different from that to which the receiver is connected.
- Consult the dealer or an experienced radio/TV technician for help.


RF warning statement:

The device has been evaluated to meet general RF exposure requirements. The device can be used in portable exposure conditions without restriction.

FAQ

- **Q: What are the dimensions of the product?**
 - A: The product comes in two sizes, 150mm and 200mm.
- **Q: Is the product material specified?**
 - A: The user manual does not specify the material used for the product.
- **Q: What compliance standards does the product meet?**
 - A: The product complies with FCC Part 15 and General RF Exposure Requirement standards.

Documents / Resources

	<p>MACALLY BTSLKEYCB Bluetooth Color Keyboard and Mouse Combo [pdf] Instruction Manual</p> <p>BTSLKEYCB, BTSLKEYCB Bluetooth Color Keyboard and Mouse Combo, Bluetooth Color Keyboard and Mouse Combo, Color Keyboard and Mouse Combo, Keyboard and Mouse Combo, Mouse Combo</p>
---	--

References

- [User Manual](#)

Leave a comment

Your email address will not be published. Required fields are marked *

Comment *

Name

Email

Website

☐ Save my name, email, and website in this browser for the next time I comment.

Post Comment

Search:

e.g. whirlpool wrf535swhz

Search

[Manuals+](#) | [Upload](#) | [Deep Search](#) | [Privacy Policy](#) | [@manuals.plus](#) | [YouTube](#)

This website is an independent publication and is neither affiliated with nor endorsed by any of the trademark owners. The "Bluetooth®" word mark and logos are registered trademarks owned by Bluetooth SIG, Inc. The "Wi-Fi®" word mark and logos are registered trademarks owned by the Wi-Fi Alliance. Any use of these marks on this website does not imply any affiliation with or endorsement.