

**MaaS**

Automatic Fish  
Feeder



# MaaS Automatic Fish Feeder Instructions

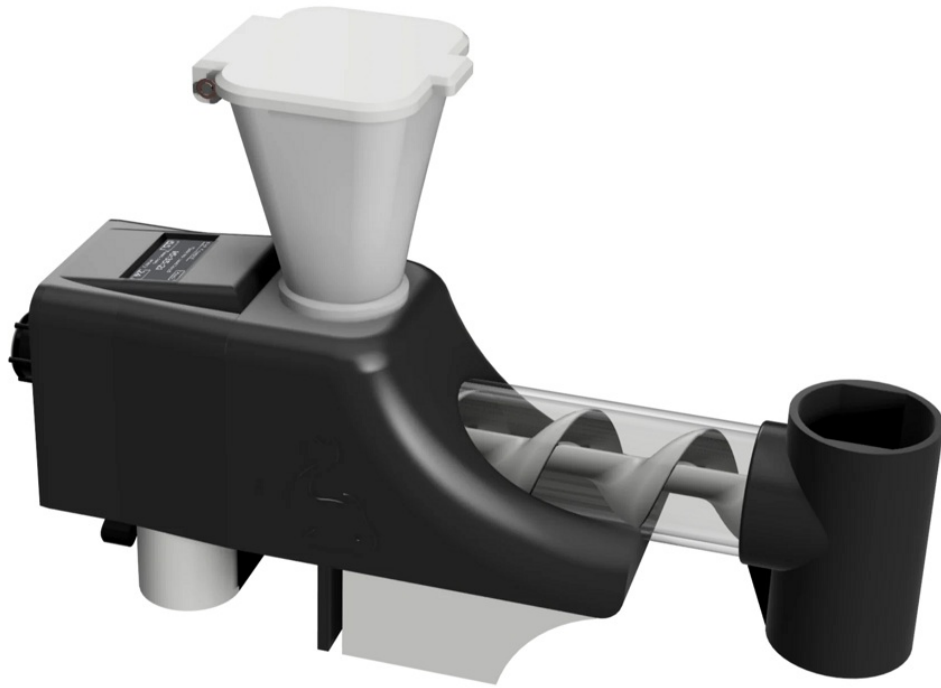
[Home](#) » [maas](#) » MaaS Automatic Fish Feeder Instructions 

## Contents

- 1 MaaS Automatic Fish Feeder
- 2 Product Information
- 3 Product Usage Instructions
- 4 FAQ
- 5 INTRODUCTION
- 6 PRODUCT OVERVIEW
- 7 Main Screen
- 8 Screen Saver
- 9 Power Failure
- 10 Cleaning the Fish Feeder
- 11 Assembling the Fish Feeder
- 12 Attaching the Fish Feeder to the glass of the tank
- 13 TroubleShooting
- 14 Included in the box
- 15 Declaration of Conformity
- 16 Documents / Resources
  - 16.1 References
- 17 Related Posts

**MaaS**

**MaaS Automatic Fish Feeder**



## Product Information

### Specifications:

- **Product Name:** MaaS Automatic Fish Feeder
- **Manufacturer:** MaaS Industries Ltd
- **Website:** [www.MaaSAquatics.com](http://www.MaaSAquatics.com)
- **Email:** [support@MaaSAquatics.com](mailto:support@MaaSAquatics.com)
- **Power Source:** 5V USB

## Product Usage Instructions

### Powering On:

The Fish Feeder is powered by a 5V USB connection. To power on, insert the supplied USB cable into the USB Port on the back of the Fish Feeder and plug the other end into a standard USB plug adapter.

### Screen Display:

Once powered on, the screen will display and the clear tube (Barrel) will illuminate white.

### Feeding Process:

The feeding process is slow to ensure even distribution of food in the tank. This prevents clumping of food in one area. Always use dry fish food to prevent blockage in the hopper.

### Changing Settings:

To change settings, press the Rotary Switch on the rear of the Fish Feeder from the Main Screen. Use the switch to navigate through menu options and select by pressing until it clicks.

## FAQ

- **How do I change the feeding intervals?**

You can change the feeding intervals by adjusting the 'Feed Hours' setting on the Fish Feeder. This allows you

to set how many hours pass between each feed.

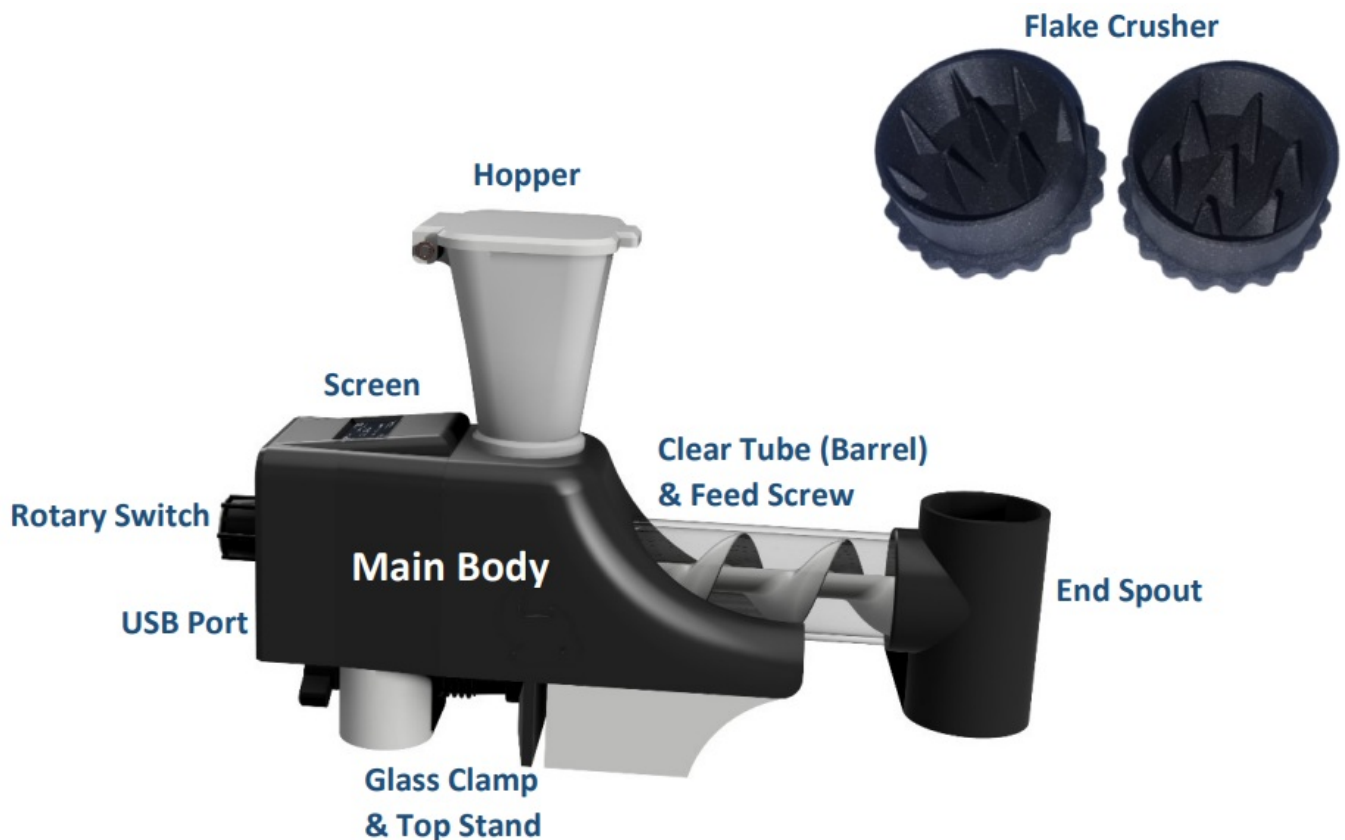
- **What type of food should I use with the Fish Feeder?**

Always use dry fish food with the Fish Feeder. Using damp food may block the hopper and affect the feeding process.

## INTRODUCTION

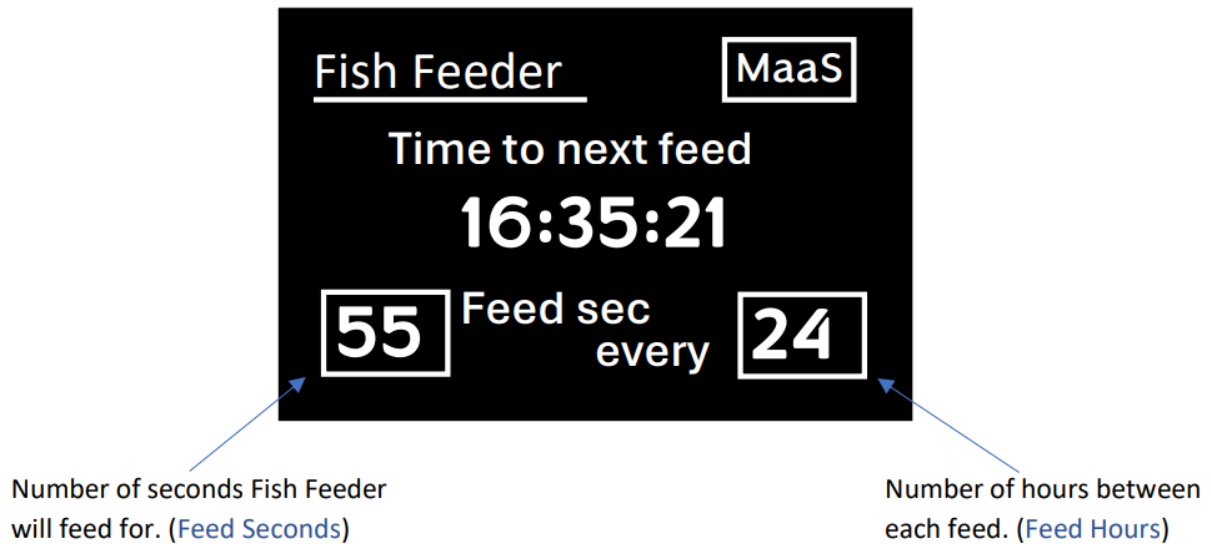
This product will automatically dispense an amount of fish food set by the user at set intervals. These can be changed at any time. Please read all instructions before using the Fish Feeder.

## PRODUCT OVERVIEW



- The Fish Feeder is powered by 5V USB making it safer near water. To power on, insert the supplied USB cable into the USB Port on the back of the Fish Feeder (Just below the Rotary Switch) and plug the opposite end of the Lead into a standard USB plug adapter (not supplied).
- Once power is given to the Fish Feeder, the Screen will display, and the clear tube (Barrel) will illuminate white.
- Please follow the instructions on 'Priming' and Crusher (Page 5), 'Feed Hours' and 'Feed Minutes' (Page4) before using the Fish Feeder.
- The Feeding is very slow to help the food distribute into your tank slowly and evenly, this helps with the circulation of the food and prevents clumps of food entering the tank in one place.
- The Fish Feeder is designed to feed more accurately, improving on dispensed food amounts.
  - Less food wastage
  - Consistent food amounts
  - Consistent feeding times
  - No requirement for Holiday/Weekend tablets when you're away.

## Main Screen



### To change settings on the Fish Feeder:

- From the Main Screen, press the Rotary Switch on the rear of the Fish Feeder. This will bring up the Main Menu. To move up and down the menu options, turn the Rotary Switch clockwise/anti-clockwise.
- To select an option, press the Rotary Switch until it clicks. This will activate the option that is identified by an arrow (=>).

### Menu Options:



***Exit***

***Manual Feed***

***Restart Countdown***

***Set Feed Hours***

***Set Feed Seconds***

***Prime Feeder***

### Exit:

By pressing the Rotary Switch on Exit, this will return you back to the Main Screen display.

### Menu Options:



*Exit*  
***Manual Feed***  
*Restart Countdown*  
*Set Feed Hours*  
*Set Feed Seconds*  
*Prime Feeder*

#### **Manual Feed:**

- This is for a Manual Feed. You will be asked to confirm your selection. Yes, to continue – No, to cancel.
- Pressing YES will feed for the desired time set in the Set Feed Seconds menu option.
- This does not affect the automatic feed time interval. It will still feed when the countdown hits 00:00:00. Manual feeding does not change the countdown to the next feed.
- When feeding, you can cancel the feed at any time by pressing the Rotary Switch, this will cancel the manual feed and return to the Main Screen.
- The illuminated Barrel will flash during both Manual Feeding and Automatic Feeding times.
- When feeding, the Feed Screw turns slower than Priming.

#### **Menu Options:**



*Exit*  
*Manual Feed*  
***Restart Countdown***  
*Set Feed Hours*  
*Set Feed Seconds*  
*Prime Feeder*

#### **Restart Countdown:**

- This will restart the Countdown to the programmed Feed Hours.
- You will be asked to confirm your selection. Yes, to continue – No, to cancel  
E.g., Restart the countdown from 12 hours (if Feed Hours set to 12 in the Set Feed Hours menu option)

#### **Menu Options:**



*Exit*  
*Manual Feed*  
*Restart Countdown*  
***Set Feed Hours***  
*Set Feed Seconds*  
*Prime Feeder*

#### **Feed Hours:**

- You will be asked to confirm your selection. Yes, to continue – No, to cancel
  - Change the Feed Hours by turning the Rotary Switch.
  - The Fish Feeder has four feeding time intervals. The countdown to the next feed will be every: –
    - 6 hours
    - 8 hours
    - 12 hours
    - 24 hours
- E.g., If the required Feed Hours is set to 24, the Fish Feeder will feed every 24 hours (Once a day)

#### **Menu Options:**



*Exit*  
*Manual Feed*  
*Restart Countdown*  
*Set Feed Hours*  
***Set Feed Seconds***  
*Prime Feeder*

#### **Feed Seconds:**

- You will be asked to confirm your selection. Yes, to continue – No, to cancel
- The number of seconds range from 1 seconds of feeding time up to 200 seconds. These change in 1 second increments by turning the Rotary Switch clockwise or anti-clockwise.  
E.g., Setting the Feed Seconds to 60 (1 minute) will release fish food for 1 minute.
- It is recommended that you use the Manual Feed menu option to test for the desired amount of fish food to be released before placing over the water.
- Place a small plate under the end spout of the feeder to catch and check the amount of food that is dispensed.

## Menu Options:



## Prime Feeder:

- You will be asked to confirm to continue. Yes, to continue – No, to cancel
- If you are using Fish Food Flakes in the Feeder, you must use the Fish Flake Crusher before placing the food into the Hopper. You will find the Crusher in the Box when you received it. This will prevent the Flakes from jamming inside the hopper.
- To use the Crusher: Place the Flakes into the Crusher that has three spikes inside it. Place the sides back together and twist clockwise and anti-clockwise for around 30 seconds. Separate the Crusher but keeping the larger side at the bottom and remove the smaller side (three spikes) upwards. Carefully pour the crushed flakes into the Hopper. Repeat until you have enough food in the Hopper.
- Once the required food has been placed into the Hopper, the food will need to be moved to the front of the feeder. (This is called Priming) – Never use damp Fish Food, this will block the Hopper!
- This is done by Priming the Fish Feeder.
- The Feeder will move the food forward until it starts dropping out of the End Spout.  
**NOTE:** It is advisable to place a small plate under the end spout to catch any food that comes out of the end of feeder.
- If the food has not reached the end of the Barrel and Feed Screw, then priming can be repeated.
- It is recommended to Prime the Feeder twice to make sure the food chambers are mostly full.
- Remember to keep the Hopper filled. If it goes too low, you will have a gap in the dispensing of the food later.
- Do not push the food down in the Hopper, allow gravity to take the food down into the Barrel chamber!
- The Fish Feeder works better with fish flakes and small grained food. (mixing both gives a better variety of feed)
- Do not place large pieces of food into the Hopper as this can cause the Feeder to jam.
- If this happens, remove power from the Feeder and clear the blockage. Once the blockage has been removed, you can proceed as per user instructions.
- Once Priming is completed, test food dispensing by completing at least two manual feeds on to a plate (not over the fish tank). Once amount is correct you can position the Fish Feeder over your Fish tank.

## Screen Saver

- The Screen Saver mode activates if the Rotary Switch has not been pressed or turned for more than 10

minutes. This is to help extend the life of the screen.

- The Screen Saver mode will only activate when the Main Screen is displaying.
- Do not leave the screen for a prolonged period in any of the options or on the Main Menu.
- Turning or pressing the Rotary Switch will bring the Fish Feeder out of Screen Saver mode and back to displaying the Main Menu.
- The Screen Saver will deactivate 10 seconds before a feed to show the countdown to feeding time.
- 10 minutes after the dispensing of food, the Screen Saver mode will reactivate.

## **Power Failure**

- In the event of a power failure, the Fish Feeder will no longer continue to work. However, once power has been restored, the Feeder will restart its countdown from the programmed Feed Hours and will feed once countdown has completed.
- Resetting the Fish Feeder at your designated time will be required as feeding times may now be out of sync.

## **Cleaning the Fish Feeder**

- Most of the feeder can be disassembled!
  1. Clear the Fish Feeder of any food. This can be done by first running the Priming steps (See Priming Section) Remember to place a small plate under the spout. (Do not Prime whilst the End Spout is over the water)
  2. Repeat priming until the Hopper and Barrel is completely empty.
  3. Remove the power cable from the Fish Feeder before proceeding to Step 4.
  4. Holding the Main Body, remove the Hopper by twisting and lifting.
  5. Holding the Barrel, remove the End Spout by twisting it away from the Barrel.
  6. Holding the Main Body, remove the Barrel by gripping and twisting whilst pulling the tube forward. Do not use any mechanical grips as this can cause the tube to break and cause injuries.
  7. Holding the Main Body, remove the Feed Screw by gently pulling on the end. You may need to give it a little wiggle to help it out.
- We recommend using a small brush to clean the Fish Feeder and any of the removed parts. E.g., using a toothbrush would be perfect.
- The Clear Tube (Barrel), End Spout and Feed Screw can all be cleaned using warm soapy water.





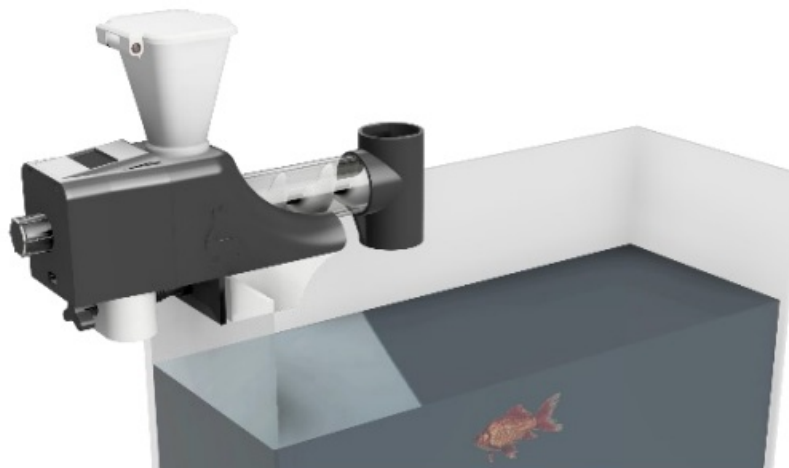
## Assembling the Fish Feeder

All parts must be completely dry before reassembling the Feeder.

- To reassemble the Feeder, follow the instructions above (cleaning) in reverse order.
- When assembling the Feed Screw, gently push the Feed Screw into position and slightly turn until it slides onto the motor fixing. Do not overexert the Feed Screw onto the motor fixing. You will know when it is in position as it will be harder to manually turn with your fingers.
- Do not continuously turn the Feed Screw manually, as this could damage the motor.

## Attaching the Fish Feeder to the glass of the tank

- Use the underside clamp (see diagram) to attach the Feeder to the glass of your Fish Tank, firstly unscrew the Nut at the bottom back leg of the Feeder until the Clamping Plate between the Front and Back
- Legs opens enough for the thickness of your glass.
- Place the glass between the Clamp and the Front Legs. Screw the
- Clamp using the Nut and your fingers, until the Feeder is secure over the tank.
- Do not over screw the Nut as this could damage the threads.



## TroubleShooting

Issue	Possible Solution
No Power on Fish Feeder	Replace USB Lead & USB Adapter.
Power but no Screen Display	Turn Rotary Switch or Press Rotary Switch. Screen Saver may be active. If still no screen, remove all power and try setup again.
Screen displaying incorrectly	Remove power and reconnect.
Feed Screw not turning	Check the Feed Screw is fixed to the motor fixing correctly. See Assembling.

### WARNING

- DO NOT PLACE LIQUIDS OR LIVE FEED INTO THE HOPPER. THIS WILL DAMAGE THE FISH FEEDER.
- DO NOT CLEAN THE BODY OF THE FISH FEEDER WITH WATER OR ANY OTHER LIQUIDS.
- DO NOT ALLOW THE FISH FEEDER TO COME IN TO CONTACT WITH WATER OR ANY OTHER LIQUIDS.
- IF THE FISH FEEDER COMES INTO CONTACT WITH WATER OR ANY OTHER LIQUIDS, IMMEDIATELY SWITCH OF MAINS POWER AT THE SOCKET AND DO NOT ATTEMPT TO POWER ON THE FISH FEEDER.
- THIS CAN CAUSE SERIOUS HARM AND MAY RESULT IN A FIRE OR SHOCKS.
- STANDARD PRODUCT WARRANTY APPLIES.

### Included in the box

- Fish Feeder
- Fish Flake Crusher
- USB Cable
- User Manual Card

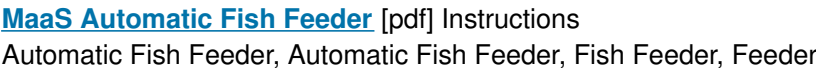
### NOT included in the box.

USB Power Plug

### Declaration of Conformity

We declare this product complies with the relevant UK legislation on condition that it is used in the manner intended, and in accordance with the current installation standards and/or the manufacturer's recommendations.

### Documents / Resources



- [!\[\]\(6302aad5aed157b291fddf37b4870784\_img.jpg\) Automatic Fish Feeder for Tropical and Cold Water Tanks – MaaS Aquatics](#)
- [!\[\]\(a9ca2c237943a6d0a9f22252f295b6f3\_img.jpg\) Automatic Fish Feeder for Tropical and Cold Water Tanks – MaaS Aquatics](#)
- [User Manual](#)

This website is an independent publication and is neither affiliated with nor endorsed by any of the trademark owners. The "Bluetooth®" word mark and logos are registered trademarks owned by Bluetooth SIG, Inc. The "Wi-Fi®" word mark and logos are registered trademarks owned by the Wi-Fi Alliance. Any use of these marks on this website does not imply any affiliation with or endorsement.