

Walmart 
Walmart
43467778
Interactive
Doctor Baby



M2COMM ELSA-E Electronic Shelf Labeling System Owner's Manual

[Home](#) » [M2COMM](#) » M2COMM ELSA-E Electronic Shelf Labeling System Owner's Manual 

Contents

- [1 M2COMM ELSA-E Electronic Shelf Labeling System](#)
- [2 Frequently Asked Questions](#)
- [3 Technical Specifications](#)
- [4 Device Setup](#)
- [5 ELSA-E Demo System IP setting](#)
- [6 M2COMM ELSA-E Demo Installation](#)
- [7 Setting Up the ELSA-E 2.7" ESL](#)
- [8 How to Display FCC ID Label](#)
- [9 FCC Statement](#)
- [10 Documents / Resources](#)
 - [10.1 References](#)

M2COMM

M2COMM ELSA-E Electronic Shelf Labeling System



Frequently Asked Questions

Q: How can I optimize the battery life of the ELSA-E system?

A: To optimize battery life, ensure that you are using the recommended CR2450 batteries and keep the system updated with the latest software for efficient power consumption.

Q: What should I do if I encounter interference from existing Wi-Fi networks?

A: If you experience interference from Wi-Fi networks, try adjusting the positioning of your Access Point and Router(s) to minimize signal disruptions. You can also reach out to M2COMM for further assistance in optimizing network performance.

RELIABLE CELLULAR-LIKE TECHNOLOGY Unique tree network for optimal coverage without interference from existing Wi-Fi networks

EASY PLUG-AND-PLAY SYSTEM

Self-networking system enables easy infrastructure setup

EXCEPTIONAL READABILITY

High-resolution e-paper display for 180° viewing

LONG BATTERY LIFE & FAST UPDATES

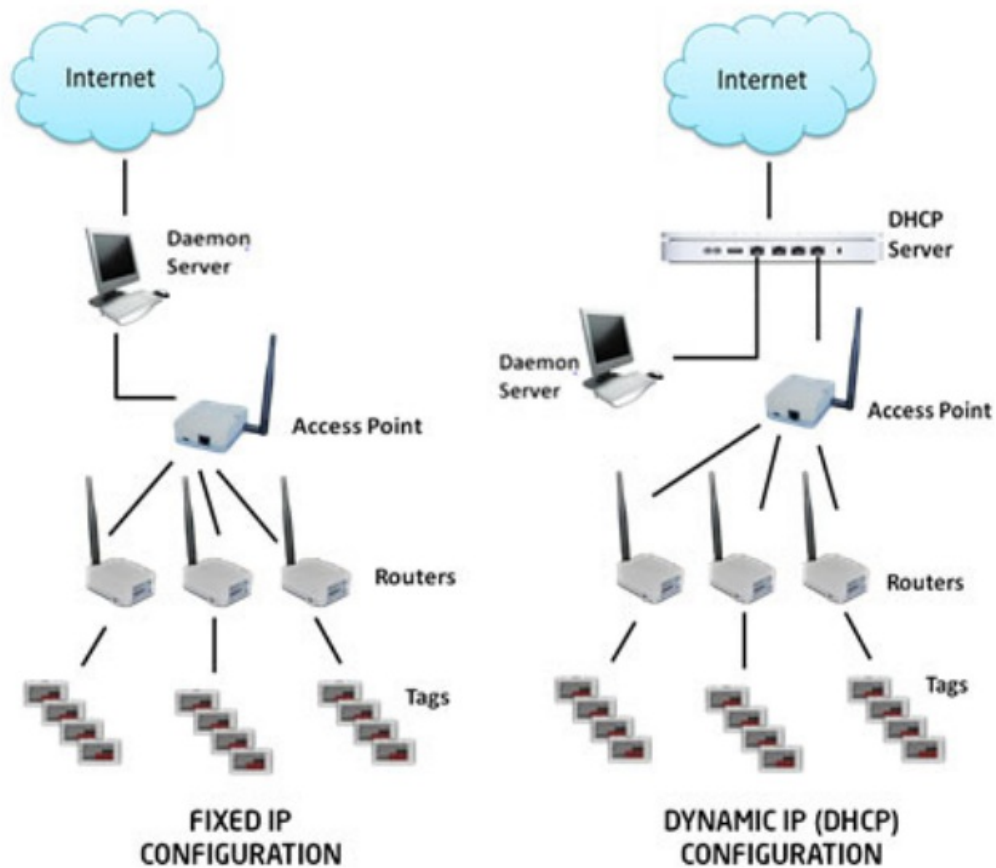
Unique wireless protocol tuned to optimize the power consumption and network efficiency

ANTI-JAMMING FROM Wi-Fi

13,500 graphic tags are fully updated per hour

INTELLIGENT SYSTEM

Acknowledges updates; battery level and signal strength notifications



Technical Specifications



- Model Name: ES27-S2
- INFRASTRUCTURE
 - Size (W x H x T) mm: 83 x 42 x 11
 - Weight: 41g
 - Antenna: Embedded
- Network: Wireless SUB-GHz ISM
- Interface: Self-networking (automatic connection built-up and recovery)
- Frequency: AES 128-bit

- Transmission Range: 100 meters (line of sight)
- Operating Conditions:
 - Operating Temp/Humidity
0 ~ 40°C / 35 ~ 55% (non-condensed)
 - Storage Temp/Humidity
0 ~ 40°C / 35 ~ 80% (non-condensed)
 - Power: 2 x CR2450
- Applications: Retail, Smart Display
- Display:
 - RESOLUTION 296 x 152
 - DPI DPI 125 pixel

Device Setup

Access Point Setting

The Access Point has a wired connection to the base station (computer) and communicates wirelessly with the Router(s) via the M2COMM proprietary protocol.

- Please refer to below procedure to setup your Access Point.



- Status Indicators and Assembly:



LED status functions:

- Red –Power-on self-test error
- Green –Power on indicator
- Blue –Network connection, shall flash slowly during boot-up and stay on while connection is built up successfully.



Access Point - Network Port:

GREEN network activity indicator—turns on when a cable connects the port to another Gigabit Ethernet port
 YELLOW activity indicator—Flashes to indicate network activity over that port



Attach included Antenna



Plug one end of the supplied Cat 5E cable into the Access Point, the other end should be plugged into your computer.



Connect the supplied AC power adaptor as shown.
Use only the adapter that came with your Access Point

Router Setting

The Router(s) operate wirelessly, via the M2COMM proprietary protocol, with the Access Point and aisle light. Please refer to below procedure to setup the Router.



Status Indicators and Assembly



LED status functions:

Red –Power-on self-test error

Green –Power on indicator

Blue –Network connection, shall flash slowly during boot-up and stay on while connection is built up successfully.



Attach included Antenna

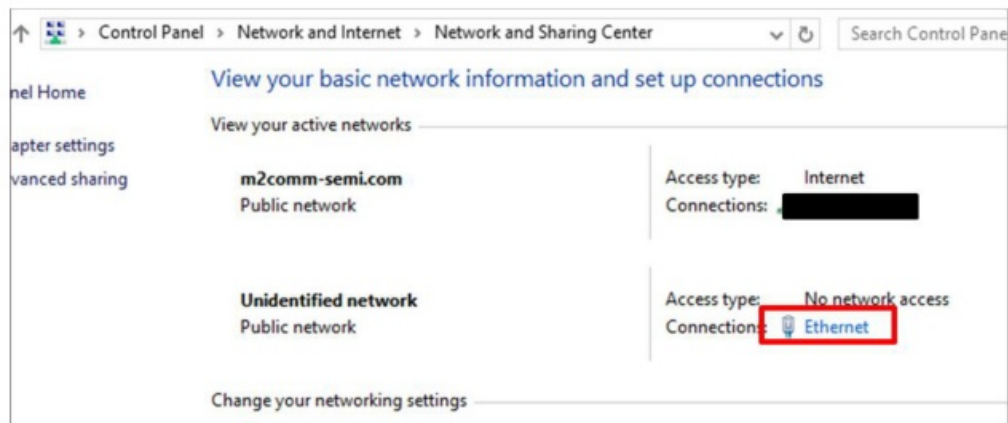


Connect the included AC power adaptor as shown.
Use only the adapter that came with your Router

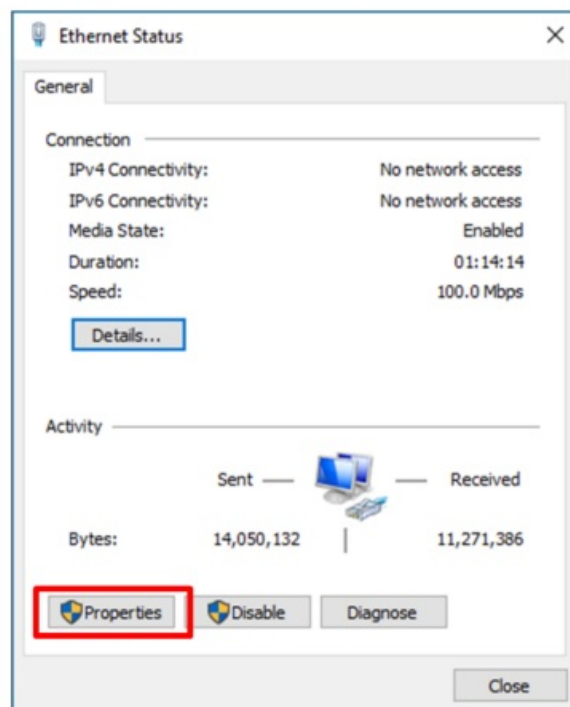
ELSA-E Demo System IP setting

- The ELSA-E demo system is designed to use either a static IP address for a single Access Point or a dynamic IP address when multiple Access Points are installed.
- IP Address Configuration (Static IP):

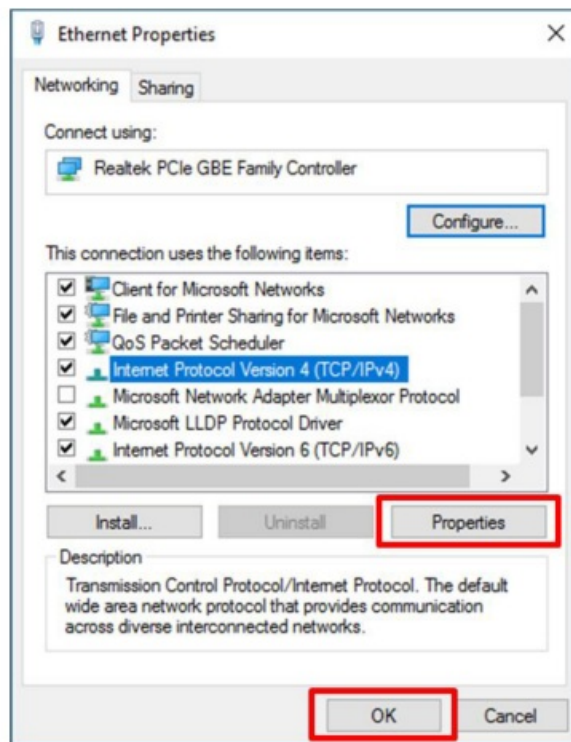
- Ensure that your Access Point is connected to your computer.
- The Access Point comes pre-configured with a default IP Address (192.168.2.1). It's necessary to modify the IP Address of the Ethernet port on your computer that is cabled to the M2COMM Access Point so that they can communicate with one another.



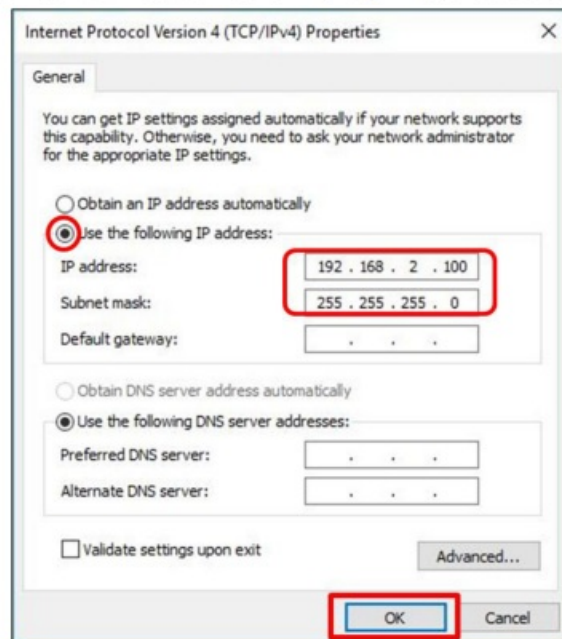
Using your computer mouse, click on Ethernet



Select Properties



Select Internet Protocol Version 4 (TCP/IPv4), and select Properties



Check Use the following IP address and enter information shown above. Select OK to apply new settings

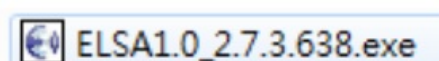
IP Address Configuration (Dynamic IP):

For installations that contain multiple Access Points an external TCP/IP Ethernet hub is required. And please contact M2COMM for further details.

M2COMM ELSA-E Demo Installation

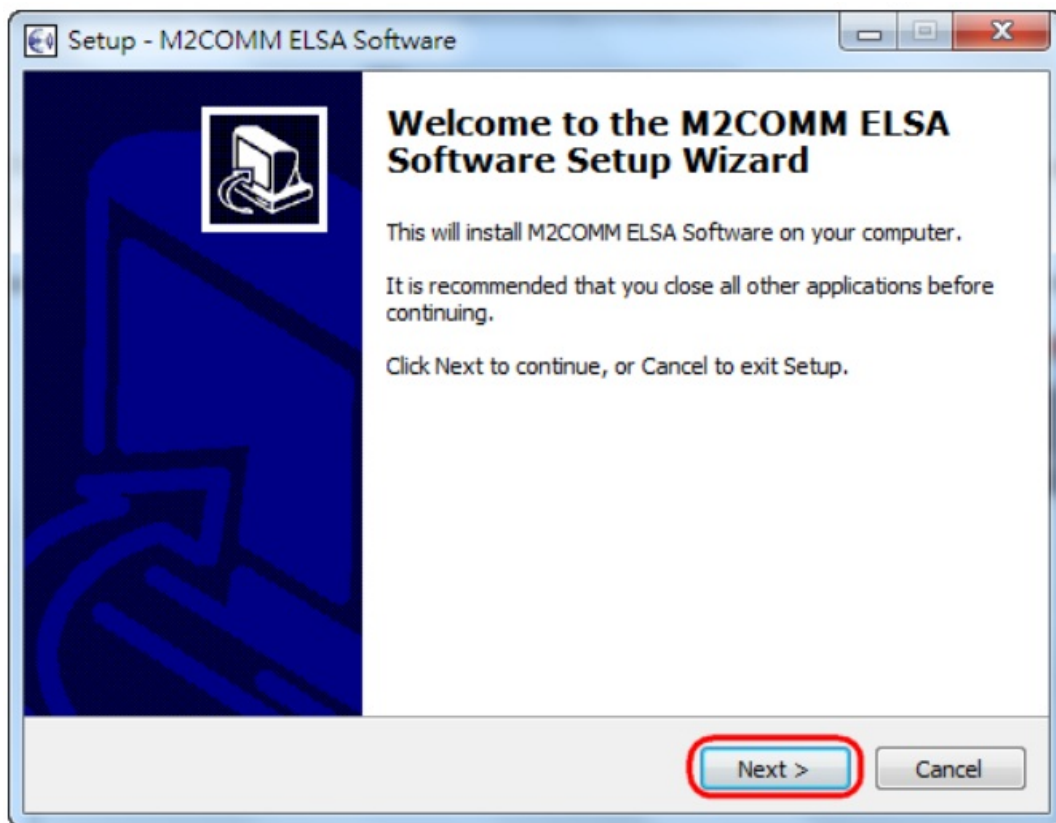
Software Installation:

Put below two executable files into the same folder on your computer. And double-click the "ELSA1.0_2.7.3.638.exe" file to begin the installation.

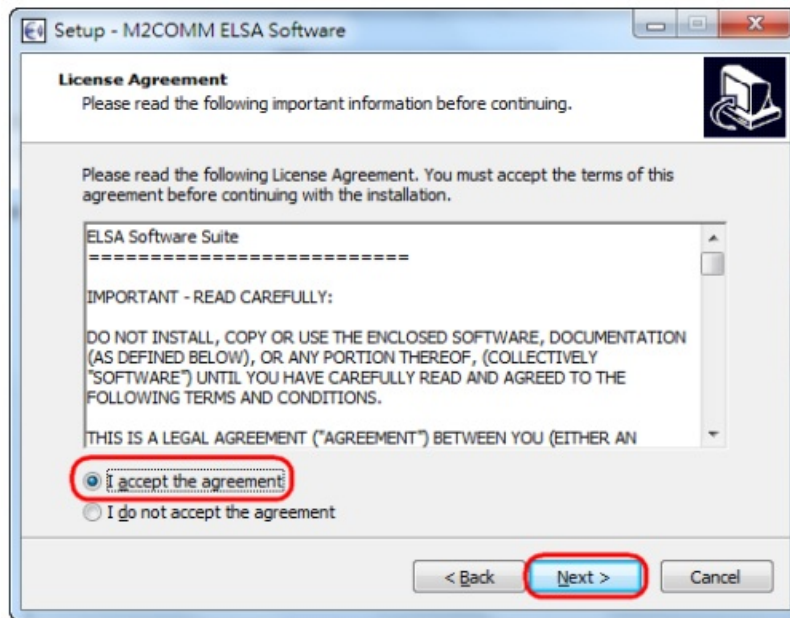


You may be asked for permission to allow the program to make changes to your computer; you must agree to this to enable installation to start.

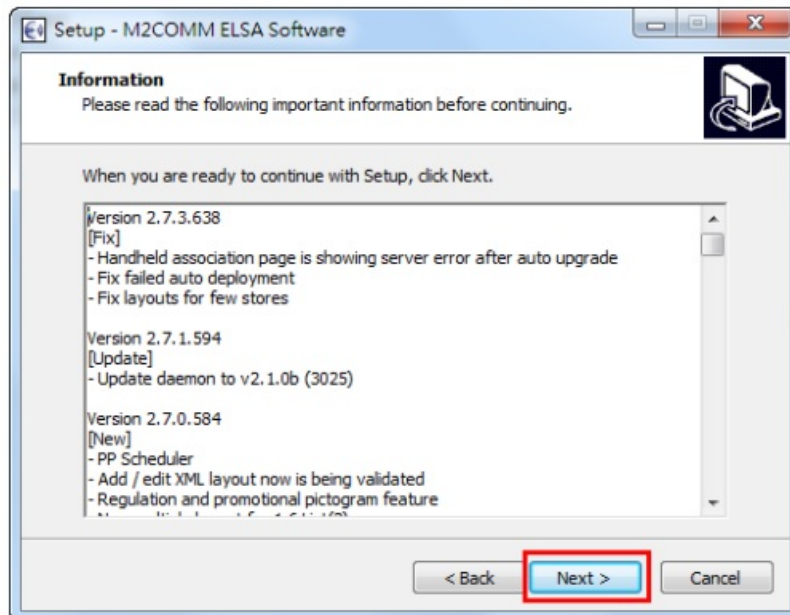
Follow the on-screen instructions to finish the installation process.



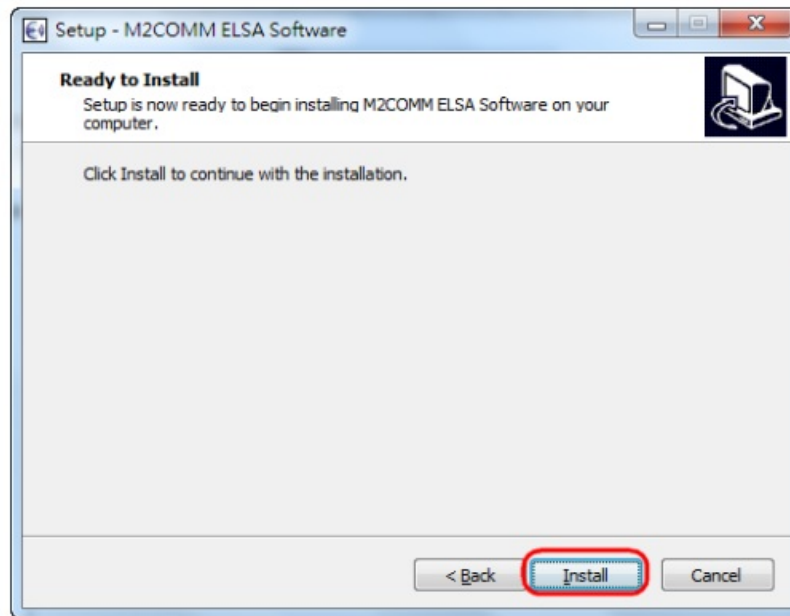
Click **Next>** to continue



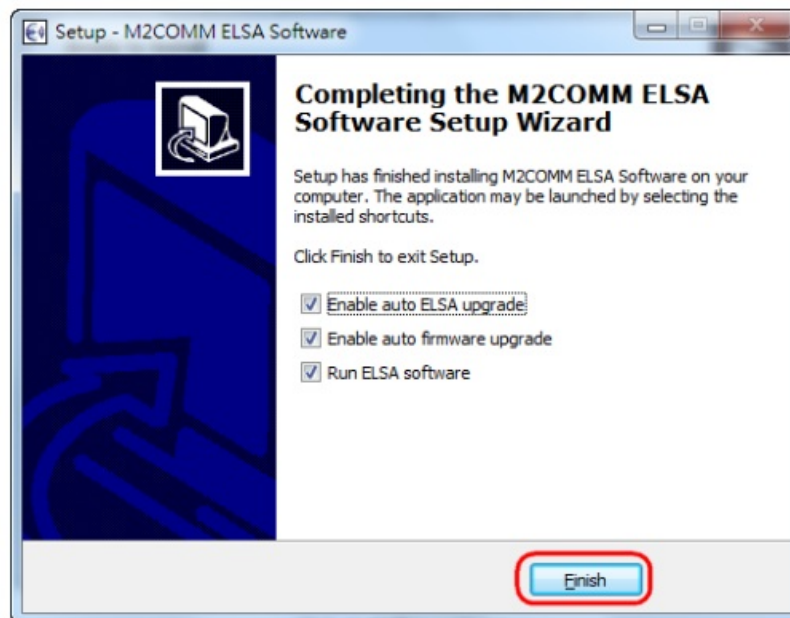
Select **Accept**, and Click **Next>** to continue



Click **Next** to continue

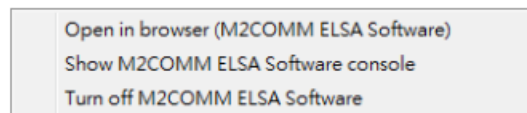


Click **Install** to start



Click **Finish** to complete the installation

The ELSA-E Demo system has now been installed and executed on your computer. The icon will be hidden inside the toolbar, and you should now be able to locate this icon on your computer screen, by right click.



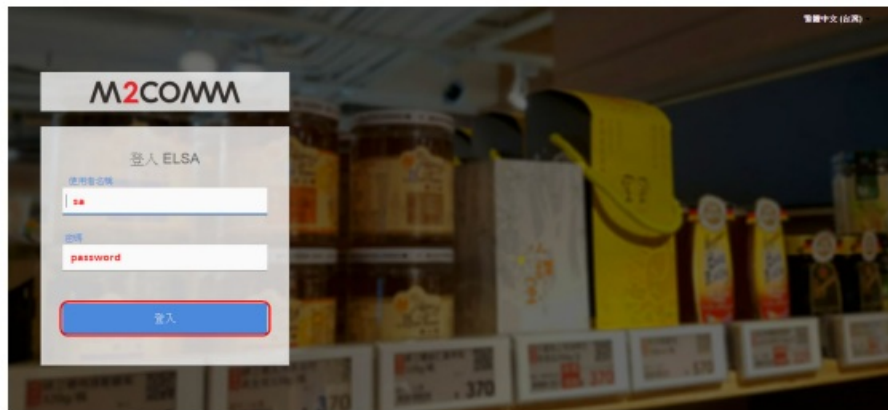
And you can also launch the ELSA software by double click the icon on desktop.



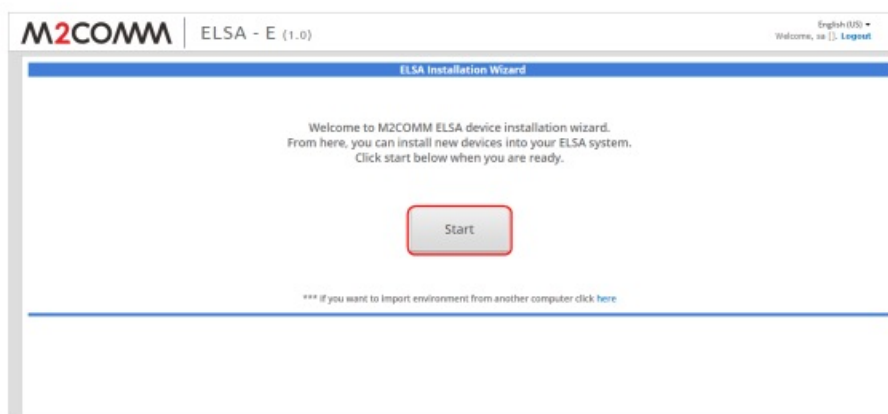
Setting Up the ELSA-E 2.7" ESL

Ensure that the Access Point is connected to your computer that the Router(s) and 2.7” ESL are installed throughout your premises and are powered on.

- Install the AP



Input “sa” for user name and “**passw0rd**” for password, to access the ELSA web.

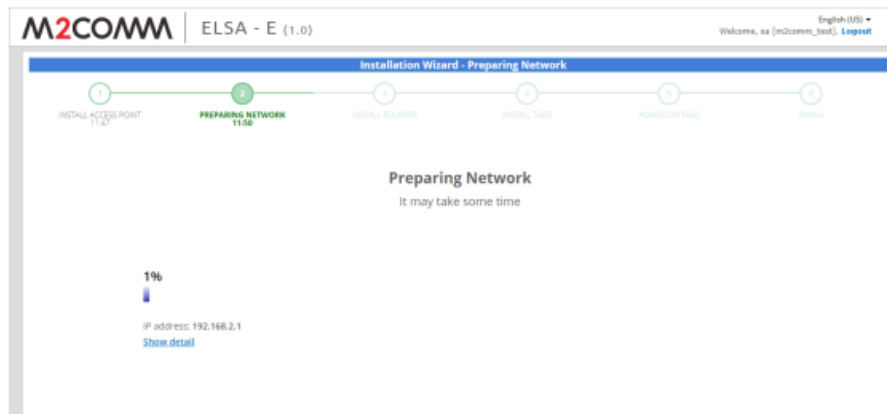


Press “**Start**” to initial the ELSA system installation process.

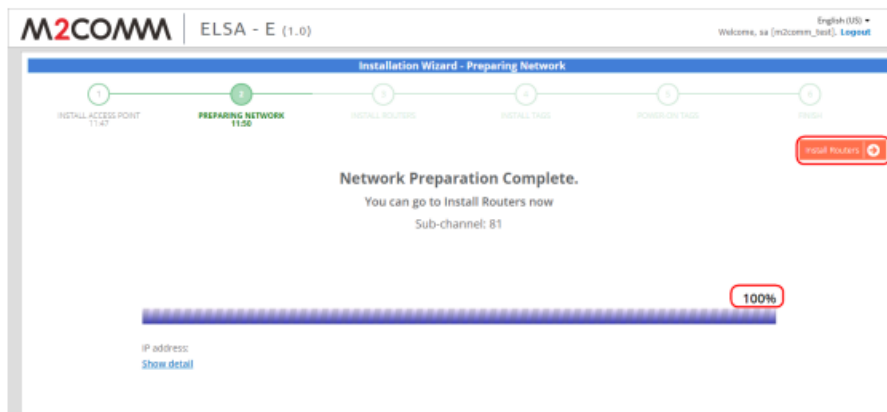
Input the store name, and press **Submit**

ELSA system will find the connected AP, and press “**Yes**” to confirm

- Preparing the Network



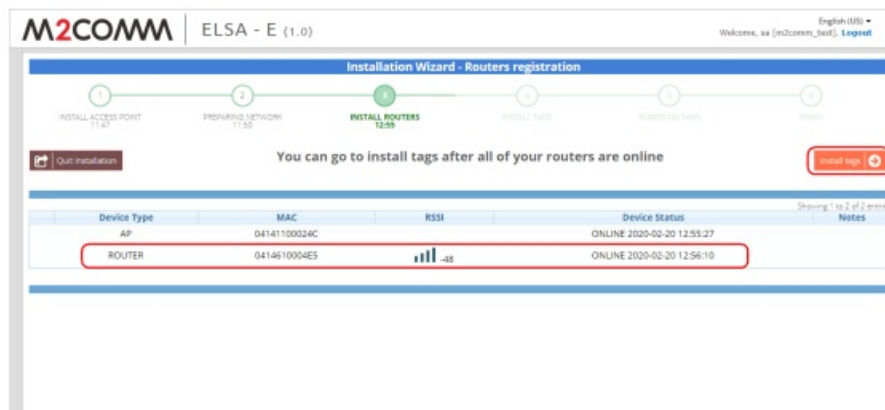
ELSA system will start to find the available wireless channel to use, and the whole process will take 1 hour. Press “Show detail” for more information.



Press “**Install Routers**” for next step, when the progress bar reaches to 100%

- **Install Router**

Power on the Router

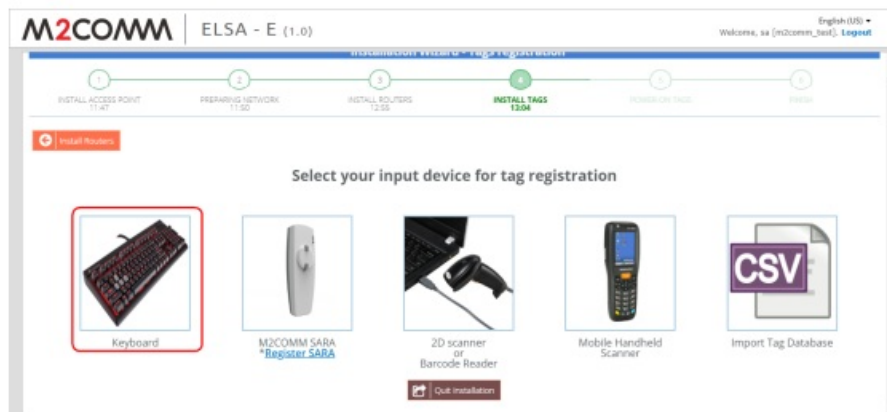


After the ELSA system install the Router automatically, press “**Install tags**”



Press “**Yes**” to confirm the device status and enter to next step

- **Install Tags**



Select **"Keyboard"** to input the MAC address posted on the bottom side of the ESL



Check **"Without product"** and Press **"Power-on"**

- Power ON Tags



Select **"Auto power-on"**

Wait for ESL to show the "wakeup" page

- Finish



After several minutes, the ESL will change display to "**registered**" page

確認

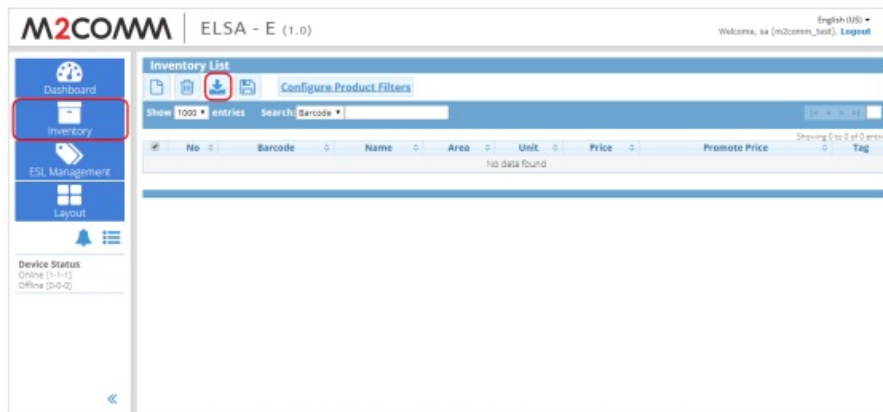
Total routers to be registered	0
Registered routers - unfinished	0
Registered routers - finish	0
Total tags to be registered	1
Registered tags - unfinished	0
Registered tags - finish	1
Total SARA to be registered	0
Registered SARA - unfinished	0
Registered SARA - finish	0

finish

Press "**Finish**" to leave the installation wizard and back to ELSA dashboard

Show the image on ELSA-E 2.7" ESL

Load the CSV file to import the inventory list first.



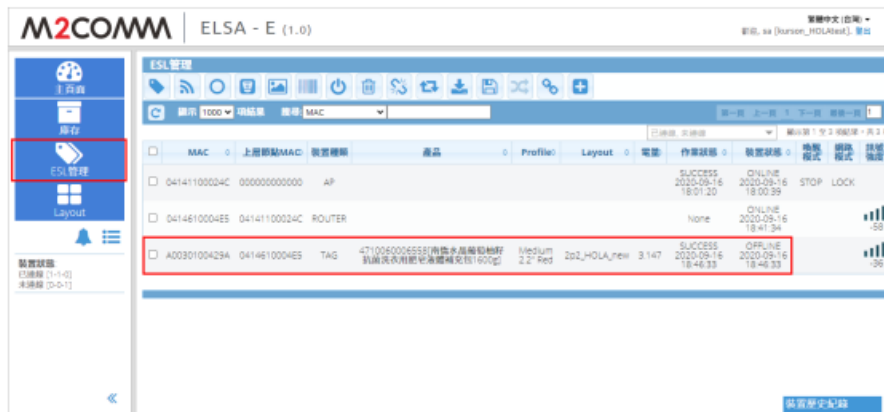
Switch to **"Inventory"** page, and press **"Import"**



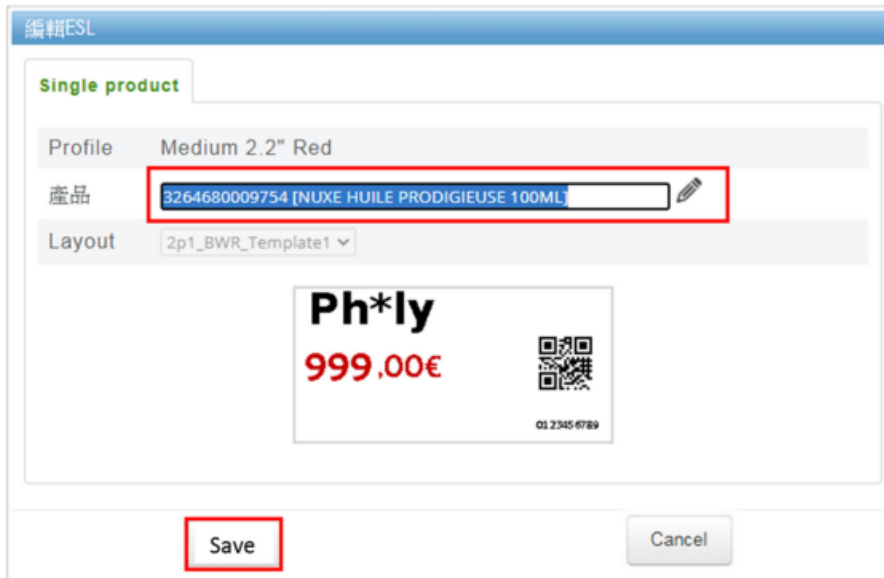
Select the CSV file, **"inventory99.csv"** and press **"Import"**



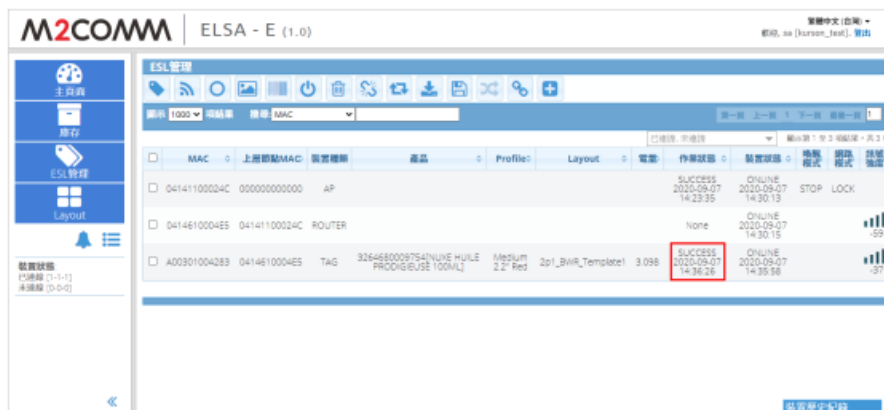
Press **"OK"** to finish the inventory importing



Switch to “ESL Management” page, and double click the 2.7”ESL



Select any one of the product, and press “Save”



Waiting for the job status become from “Processing” to “SUCCESS”



2.7” ESL shown with image

How to Display FCC ID Label

1. Wake Up the Tag: Ensure the EPD is not blank or shows a “sleep mark” (red/black square in the top-left corner).
If “sleep mark” present, use a tool to press the button ONCE inside the tag via the side opening.
 2. Switch Screens: Press side button TWICE to reach the authentication screen.
- The number of operations is based on the current display screen but does not exceed two times.



2.7" ESL internal button



2.7" ESL FCC ID display results

Battery Caution:

The elements of the instructional safeguard shall be as follows:

- element 1a: not available
- element 2: “Do not ingest battery, Chemical Burn Hazard” or equivalent wording
- element 3: the following or equivalent text
[The remote control supplied with] This product contains a coin/button cell battery. If the coin / button cell battery is swallowed, it can cause severe internal burns in just 2 hours and can lead to death.
- element 4: the following or equivalent text
 - Keep new and used batteries away from children
 - If the battery compartment does not close securely, stop using the product and keep it away from children.
 - If you think batteries might have been swallowed or placed inside any part of the body, seek immediate

medical attention.

FCC Statement

This device complies with part 15 of the FCC Rules. Operation is subject to the following two conditions:

1. This device may not cause harmful interference, and
2. This device must accept any interference received, including interference that may cause undesired operation.

NOTE: This equipment has been tested and found to comply with the limits for a Class B digital device, pursuant to part 15 of the FCC Rules. These limits are designed to provide reasonable protection against harmful interference in a residential installation.

This equipment generates, uses and can radiate radio frequency energy and, if not installed and used in accordance with the instructions, may cause harmful interference to radio communications. However, there is no guarantee that interference will not occur in a particular installation. If this equipment does cause harmful interference to radio or television reception, which can be determined by turning the equipment off and on, the user is encouraged to try to correct the interference by one or more of the following measures:

- Reorient or relocate the receiving antenna.
- Increase the separation between the equipment and receiver.
- Connect the equipment into an outlet on a circuit different from that to which the receiver is connected.
- Consult the dealer or an experienced radio/TV technician for help.

Changes or modifications not expressly approved by the party responsible for compliance could void the user's authority to operate the equipment.

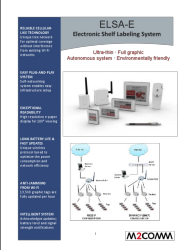
This equipment complies with FCC radiation exposure limits set forth for an uncontrolled environment. This equipment should be installed and operated with a minimum distance of 20 cm between the radiator and a human body.

M2COMMUNICATION Inc. 17 Floor, No. 32 Gaotie 2nd Road, Zhubei City, Hsinchu County 302, Taiwan (R.O.C.)
Fax: +886 3 657 6909 Tel: +886 3 657 8939 <http://www.m2comm.co>
SALES AND SUPPORT: info@m2comm.co

Copyright © 2017 M2COMMUNICATION Inc. All rights reserved. This document is the property of M2COMMUNICATION Inc. It contains information which is confidential and proprietary to M2COMMUNICATION Inc. No part of this document may be copied, reproduced or disclosed to third parties without the prior written consent of M2COMMUNICATION Inc.

(Document number: PB-ELSA-Q001)

Documents / Resources

	<p>M2COMM ELSA-E Electronic Shelf Labeling System [pdf] Owner's Manual ES27-S2, 2AFXU-ES27-S2, 2AFXUES27S2, ELSA-E Electronic Shelf Labeling System, ELSA-E, Electronic Shelf Labeling System, Shelf Labeling System, Labeling System, System</p>
---	---

References

- [ESL | M2COMM](#)
- [User Manual](#)

Manuals+, Privacy Policy

This website is an independent publication and is neither affiliated with nor endorsed by any of the trademark owners. The "Bluetooth®" word mark and logos are registered trademarks owned by Bluetooth SIG, Inc. The "Wi-Fi®" word mark and logos are registered trademarks owned by the Wi-Fi Alliance. Any use of these marks on this website does not imply any affiliation with or endorsement.