

M2COMM

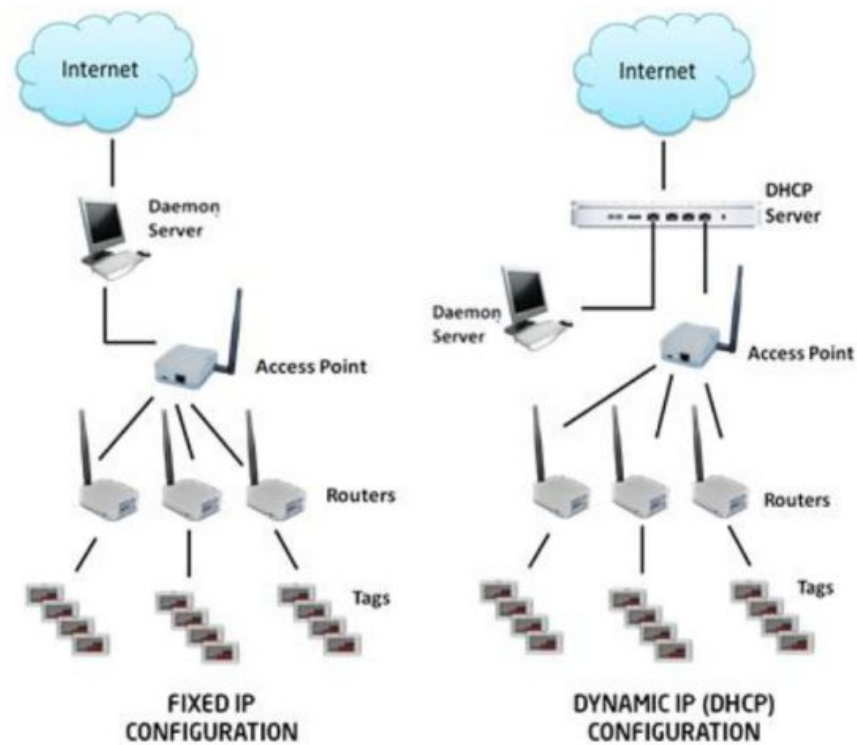
Ultra-thin · Full graphic

Autonomous system · Environmentally friendly

ELSA-E

Electronic Shelf Labeling System





Contents [[hide](#)]

- 1 [EF22-S2 Electronic Shelf Labeling System](#)
- 2 [Technical Specification](#)
- 3 [Device Setup:](#)
- 4 [M2COMM ELSA-E Demo Installation:](#)
- 5 [Setting Up the ELSA-E 2.7" ESL](#)
- 6 [Show the image on ELSA-E 2.2" ESL](#)
- 7 [Battery Caution:](#)
- 8 [FCC Statement:](#)
- 9 [Documents / Resources](#)
- 9.1 [References](#)

EF22-S2 Electronic Shelf Labeling System

RELIABLE CELLULARLIKE TECHNOLOGY

Unique tree network for optimal coverage without interference from existing Wi-Fi networks

EASY PLUG-AND-PLAY SYSTEM

Self-networking system enables easy infrastructure setup

EXCEPTIONAL READABILITY

High resolution e-paper display for 180° viewing

LONG BATTERY LIFE & FAST UPDATES

Unique wireless protocol tuned to optimize the power consumption and network efficiency

ANTI-JAMMING FROM Wi-Fi

13,500 graphic tags are fully updated per hour

INTELLIGENT SYSTEM

Acknowledges updates; battery level and signal strength notifications

Technical Specification



MODEL NAME: EF22-S 2	
INFRASTRUCTURE	
SIZE (W x H x T) mm	70 x 37.4 x 9.6
WEIGHT, g	24
ANTENNA	EMBEDDED
NETWORK	
INTERFACE	WIRELESS
FREQUENCY	SUB-GHz ISM
OPERATION MODE	SELF-NETWORKING (AUTOMATIC CONNECTION BUILT-UP AND RECOVERY)
ENCRYPTION	AES 128-bit

TRANSMISSION RANGE	100 METERS (LINE OF SIGHT)
OPERATING CONDITIONS	
OPERATING TEMP/HUMIDITY	0 ~ 40°C / 35 ~ 55% (non-condensed)
STORAGE TEMP/HUMIDITY	0 ~ 40°C / 35 ~ 80% (non-condensed)
POWER	1 x CR2450
APPLICATIONS	Retail, Smart Display
Display	
RESOLUTION	250 x 122
DPI	130 pixel

Device Setup:

Access Point Setting

The Access Point has a wired connection to the base station (computer) and communicates wirelessly with the Router(s) via the M2COMM proprietary protocol. Please refer to below procedure to setup your Access Point.



Status Indicators and Assembly:



LED status functions:

Red –Power-on self-test error

Green –Power on indicator

Blue –Network connection, shall flash slowly during boot-up and stay on while connection is built up successfully.



Access Point – Network Port:

GREEN network activity indicator—turns on when a cable connects the port to another Gigabit Ethernet port

YELLOW activity indicator—Flashes to indicate network activity over that port



Attach included Antenna



Plug one end of the supplied Cat 5E cable into the Access Point, the other end should be plugged into your computer.



Connect the supplied AC power adaptor as shown.

Use only the adapter that came with your Access Point

Router Setting

The Router(s) operate wirelessly, via the M2COMM proprietary protocol, with the Access Point and aisle light.

Please refer to below procedure to setup the Router.



Status Indicators and Assembly:



LED status functions:

Red –Power-on self-test error

Green –Power on indicator

Blue –Network connection, shall flash slowly during boot-up and stay on while connection is built up successfully.



Attach included Antenna



Connect the included AC power adaptor as shown.

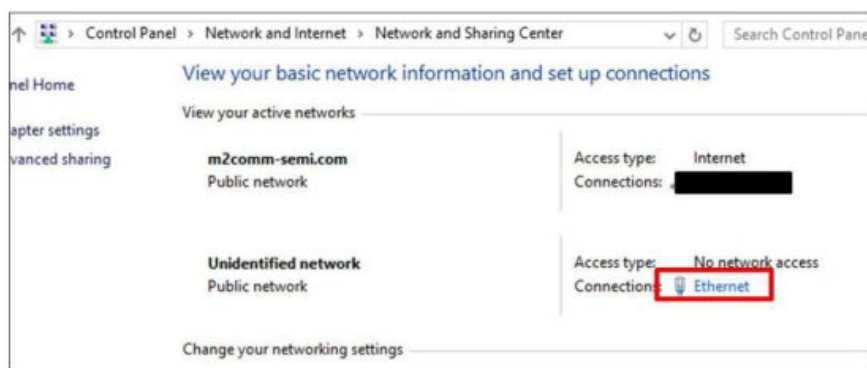
Use only the adapter that came with your Router

ELSA-E Demo System IP setting:

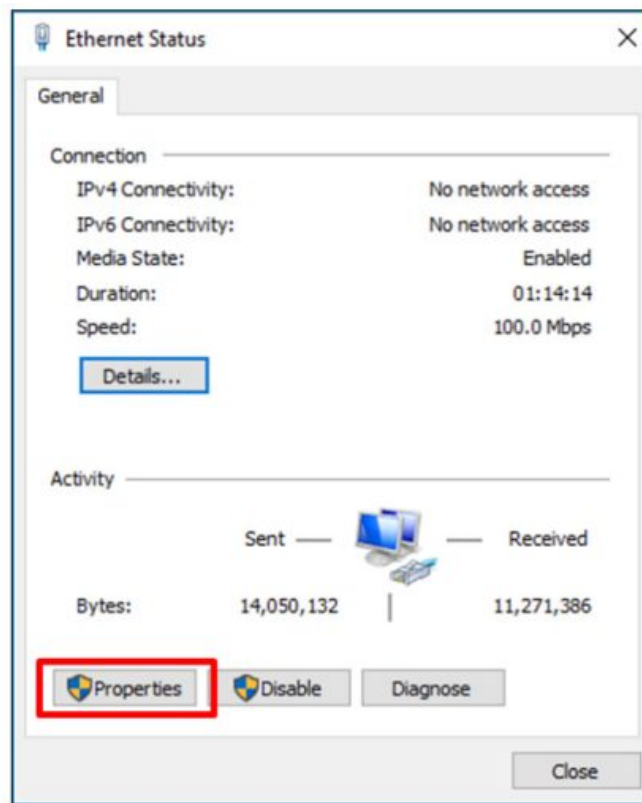
The ELSA-E demo system is designed to use either a static IP address for a single Access Point or a dynamic IP address when multiple Access Points are installed.

IP Address Configuration (Static IP): Ensure that your Access Point is connected to your computer.

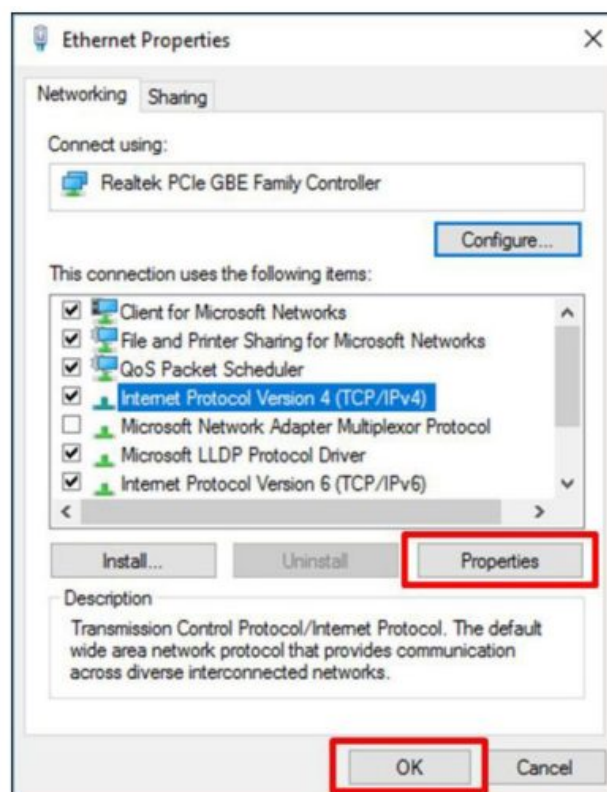
The Access Point comes pre-configured with a default IP Address (192.168.2.1). It's necessary to modify the IP Address of the Ethernet port on your computer that is cabled to the M2COMM Access Point so that they can communicate with one another.



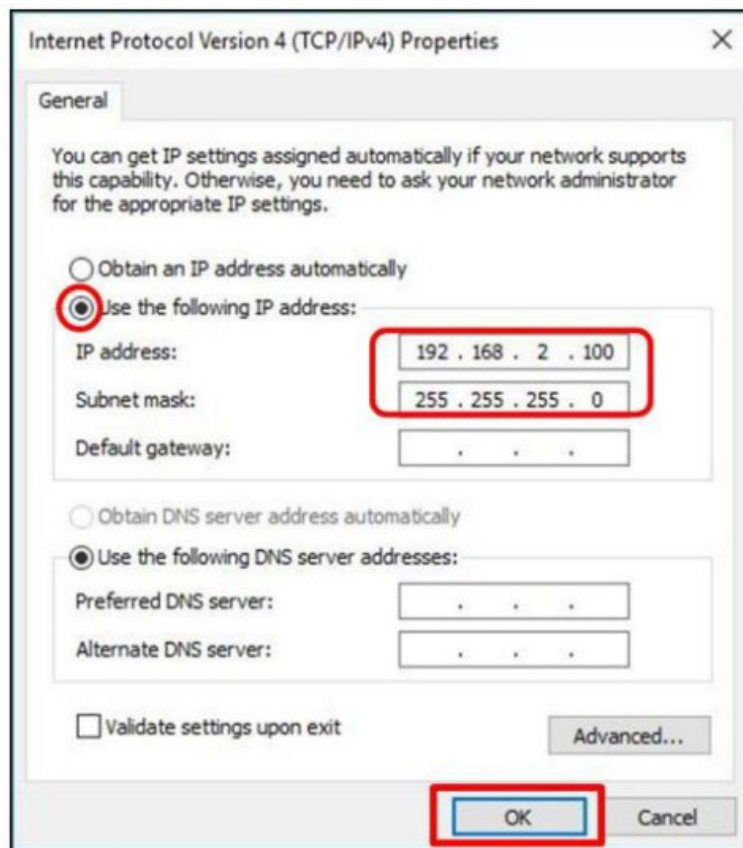
Using your computer mouse, click on Ethernet



Select Properties



Select Internet Protocol Version 4 (TCP/IPv4), and select Properties



Check Use the following IP address and enter information shown above. Select OK to apply new settings

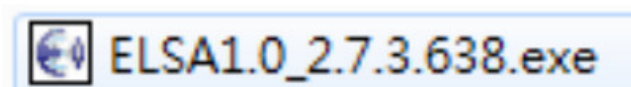
IP Address Configuration (Dynamic IP):

For installations that contain multiple Access Points an external TCP/IP Ethernet hub is required. And please contact M2COMM for further details.

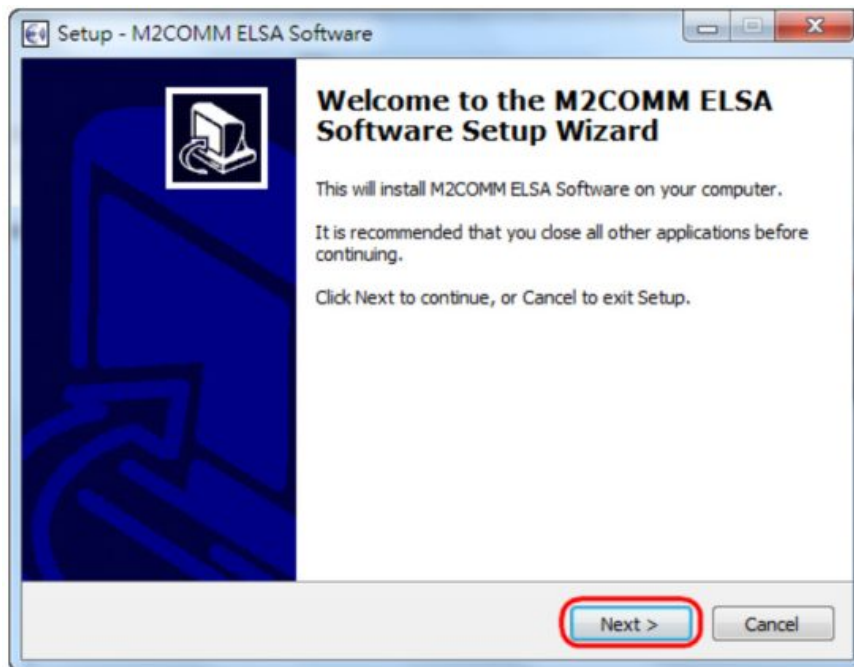
M2COMM ELSA-E Demo Installation:

Software Installation:

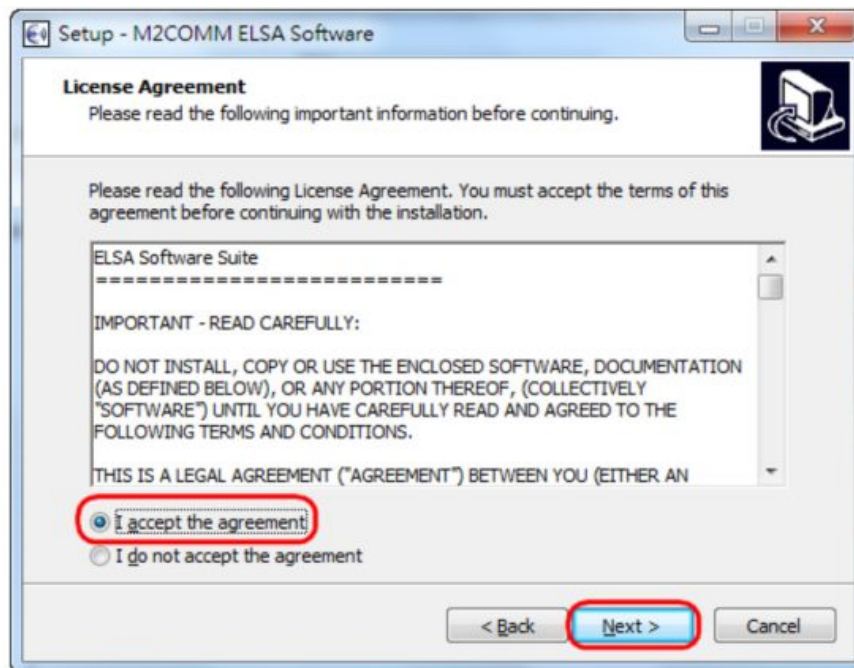
Put below two executable files into the same folder on your computer. And double-click the “ELSA1.0_2.x.x.xxxx.exe” file to begin the installation.



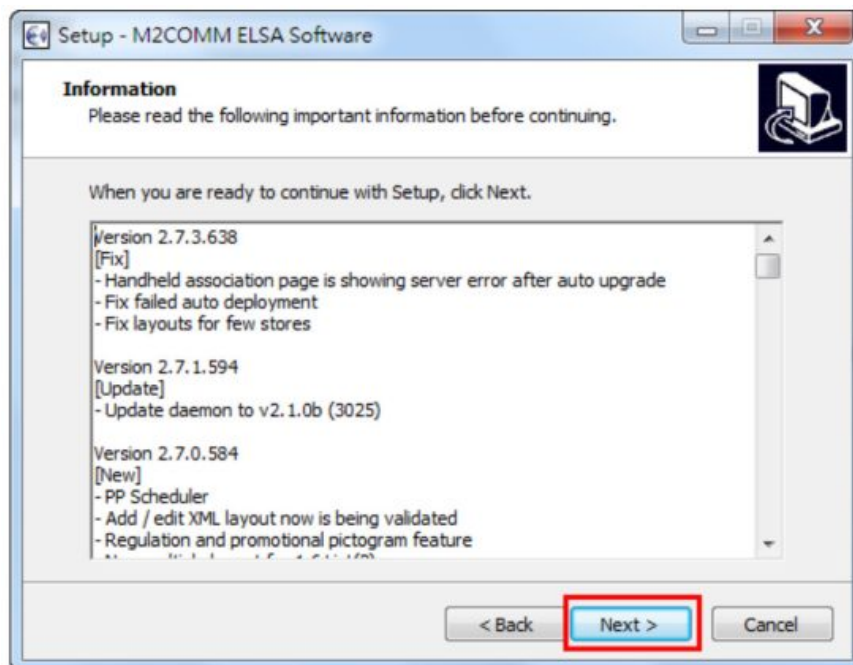
You may be asked for permission to allow the program to make changes to your computer; you must agree to this to enable installation to start. Follow the on-screen instructions to finish the installation process.



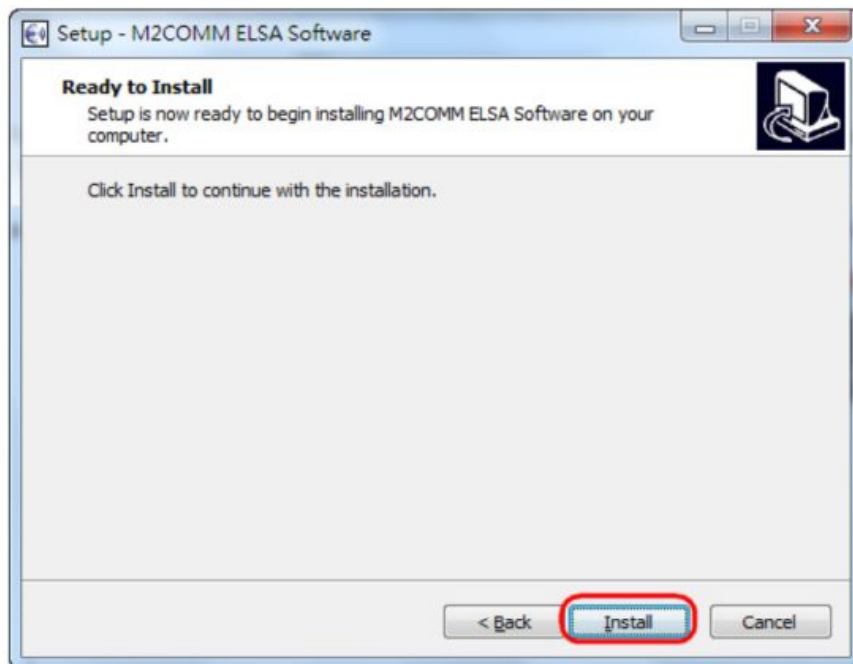
Click **Next>** to continue



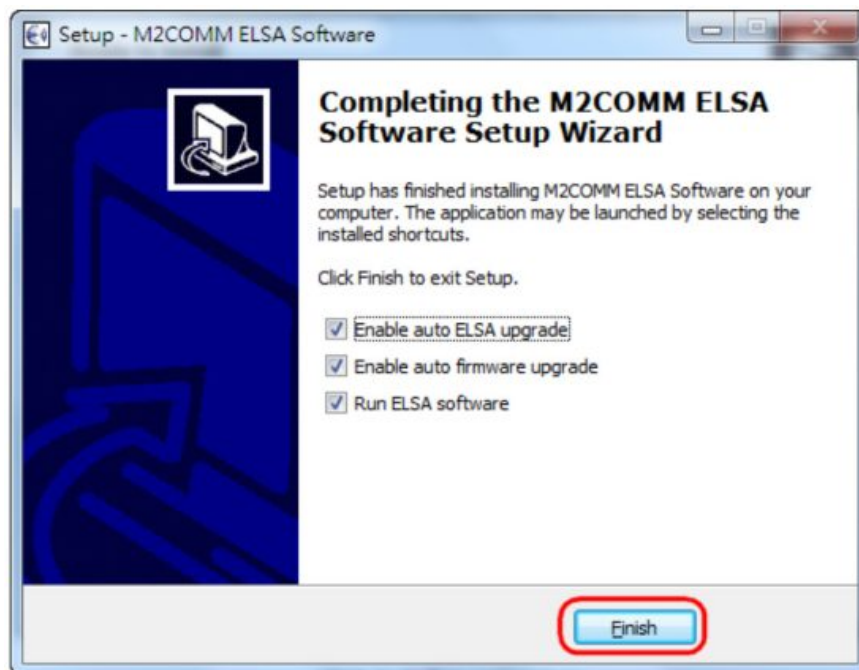
Select **Accept**, and Click **Next>** to continue



Click **Next** to continue

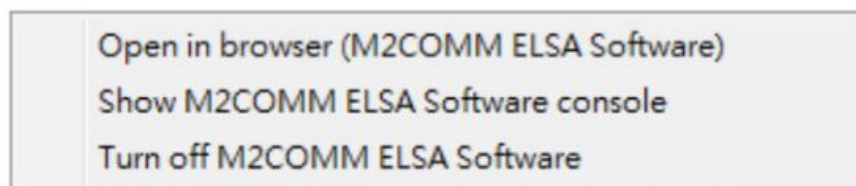


Click **Install** to start

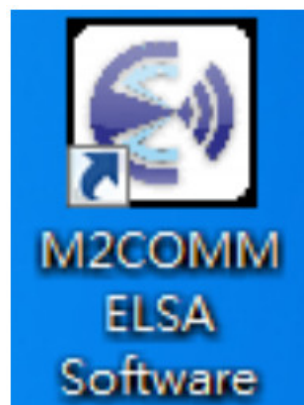


Click **Finish** to complete the installation

The ELSA-E Demo system has now been installed and executed on your computer. The icon will be hidden inside the toolbar, and you should now be able to locate this icon on your computer screen, by right click.



And you can also launch the ELSA software by double click the icon on desktop.



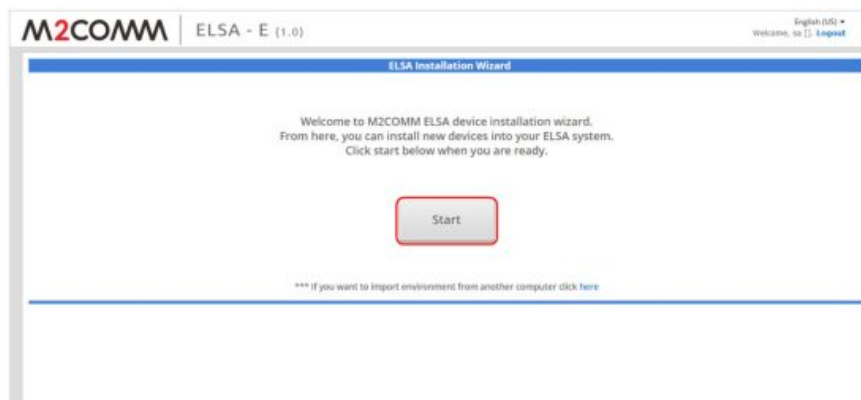
Setting Up the ELSA-E 2.7" ESL

Ensure that the Access Point is connected to your computer that the Router(s) and 2.7" ESL are installed throughout your premises and are powered on.

Install the AP



Input **"sa"** for user name and **"passw0rd"** for password, to access the ELSA web.

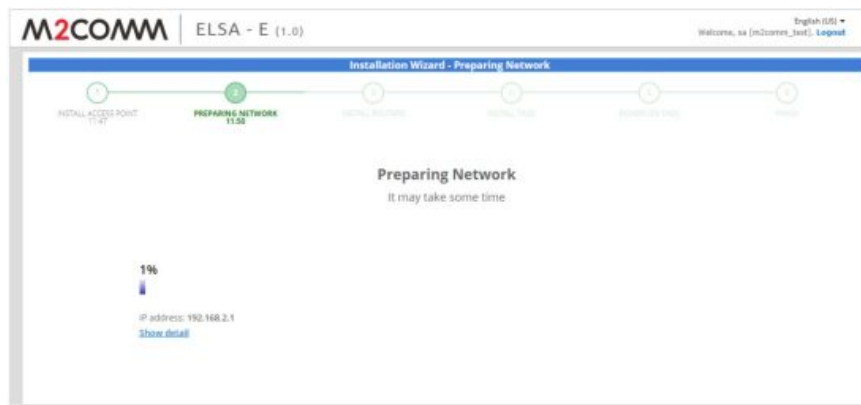


Press **"Start"** to initial the ELSA system installation process.

Input the store name, and press **Submit**

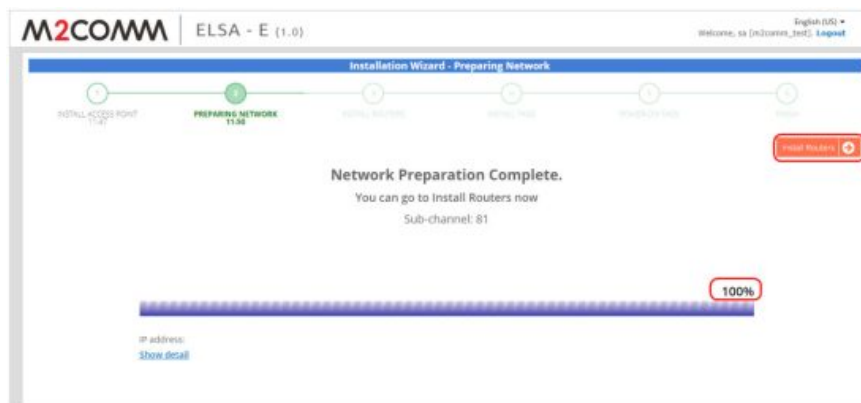
ELSA system will find the connected AP, and press **"Yes"** to confirm

Preparing the Network



ELSA system will start to find the available wireless channel to use, and the whole process will take 1 hour.

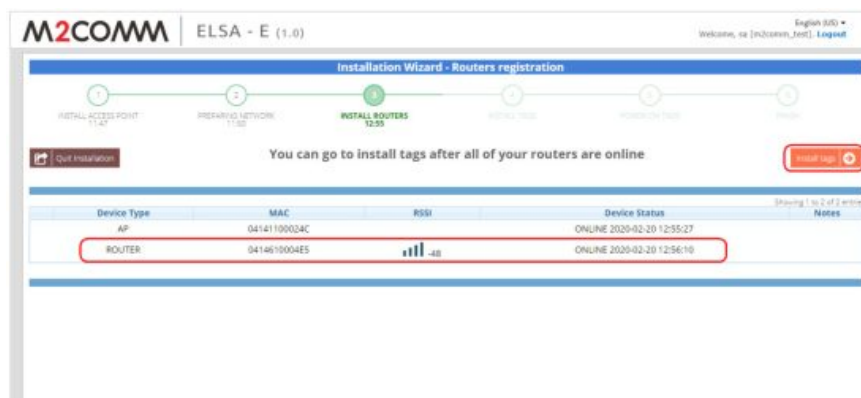
Press “Show detail” for more information.



Press “Install Routers” for next step, when the progress bar reaches to 100%

Install Router

Power on the Router



After the ELSA system install the Router automatically, press “Install tags”

Confirmation

ELSA system found that you have following routers:

Online router: 1
 Offline router: 0
 Connecting router: 0
 Not registered router: 0

Do you want to continue?

Yes NO

Press **"Yes"** to confirm the device status and enter to next step

Install Tags

M2COMM | ELSA - E (1.0) | English (US) | Welcome, ea [m2comm_user] Logout

1 INSTALL ACCESS POINT 11:47 2 PREPARING NETWORK 11:50 3 INSTALL ROUTERS 12:55 4 **INSTALL TAGS 13:04** 5 POWER ON TAGS 6 FINISH

Install Router

Select your input device for tag registration

Keyboard M2COMM SARA Register SARA 2D scanner or Barcode Reader Mobile Handheld Scanner Import Tag Database

Quit Installation



Select **"Keyboard"** to input the MAC address posted on the bottom side of the ESL

M2COMM | ELSA - E (1.0) | 繁體中文 (台灣) | 歡迎, ea [m2comm_user] 登出

1 安裝存取點 11:47 2 準備網路 11:50 3 安裝路由器 12:55 4 **安裝標籤 13:04** 5 開啟標籤 6 完成

1.2

選擇 ☒ Without product ☐

Tag's MAC address:

Submit

Notes

目標:
 Register tag: A00301004283

MAC	產品
A00301004283	none

Power-on

Check **"Without product"** and Press **"Power-on"**

Power ON Tags

確認

How do you want to power-on the tags?

Select "**Auto power-on**"

Wait for ESL to show the "**wakeup**" page

Finish

After several minutes, the ELSA web will show "**register finish**" page

確認

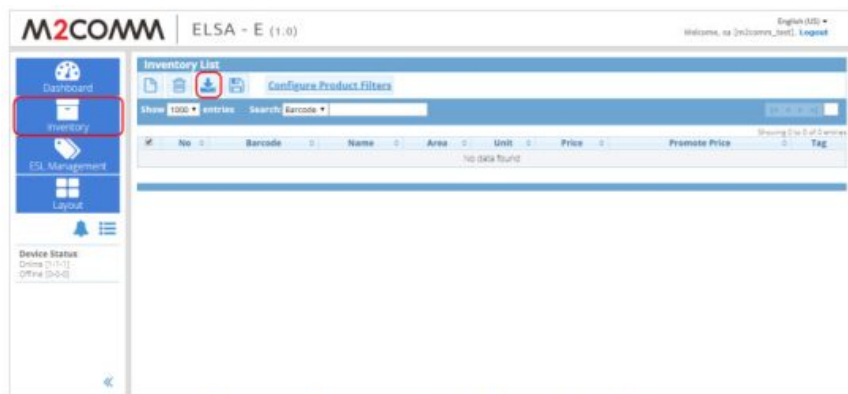
Total routers to be registered	0
Registered routers - unfinished	0
Registered routers - finish	0
Total tags to be registered	1
Registered tags - unfinished	0
Registered tags - finish	1
Total SARA to be registered	0
Registered SARA - unfinished	0
Registered SARA - finish	0

finish

Press "**Finish**" to leave the installation wizard and back to ELSA dashboard

Show the image on ELSA-E 2.2'' ESL

Load the CSV file to import the inventory list first.



Switch to "Inventory" page, and press "Import"



Select the CSV file, "inventory99.csv" and press "Import"



Press "OK" to finish the inventory importing



Switch to "ESL Management" page, and double click the 2.2" ESL

編輯ESL

Single product


Profile Medium 2.2" Red

產品 3264680009754 [NUXE HUILE PRODIGIEUSE 100ML]

Layout 2p1_BWR_Template1

Ph*ly

999.00€



03 2345 6789

Save Cancel

Select any one of the product, and press "Save"

M2COMM ELSA - E (1.0)

ESL管理

MAC	上層標籤MAC	裝置名稱	產品	Profile	Layout	電壓	作業狀態	裝置狀態	時間	模式	強度
04141100024C	000000000000	AP					SUCCESS 2022-08-07 14:23:35	ONLINE 2022-08-07 14:30:13		STOP	LOCK
041481000485	04141100024C	ROUTER					None	ONLINE 2022-08-07 14:30:15			-59
A00301004283	041481000485	TAG	3264680009754[NUXE HUILE PRODIGIEUSE 100ML]	Medium 2.2" Red	2p1_BWR_Template1	3.096	SUCCESS 2022-08-07 14:34:24	ONLINE 2022-08-07 14:35:58			-37

Waiting for the job status become from "Processing" to "SUCCESS"



2.2" ESL shown with image

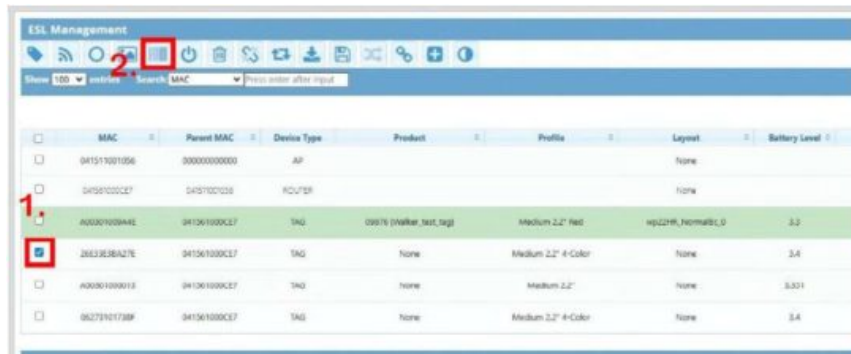
How to Display FCC ID Label(After certification, display it on the "Pairing Page)

1. Wake Up the Tag: Ensure the EPD is not blank or shows a "sleep mark" (red/black square in the top-left corner).
If "sleep mark" please activate wake-up mode from ELSA WEB until ED removes the "sleep mark."



Active wake-up mode from ELSA web

2. Switch Screens: Switch the EPD display to the “Pairing Page”
Select the ED from ELSA WEB, then click the “Show Barcode” button.



The ED will be preset to display the “Pairing Page” upon shipment.



2.2" ESL FCC ID display results

Battery Caution:

The elements of the instructional safeguard shall be as follows:

- element 1a: not available
- element 2: “Do not ingest battery, Chemical Burn Hazard” or equivalent wording
- element 3: the following or equivalent text

[The remote control supplied with] This product contains a coin / button cell battery. If the coin / button cell battery is swallowed, it can cause severe internal burns in just 2 hours and can lead to death.

- element 4: the following or equivalent text

Keep new and used batteries away from children

If the battery compartment does not close securely, stop using the product and keep it away from children.

If you think batteries might have been swallowed or placed inside any part of the body, seek immediate medical attention.

FCC Statement:

This device complies with part 15 of the FCC Rules. Operation is subject to the following two conditions:

(1) This device may not cause harmful interference, and (2) This device must accept any interference received, including interference that may cause undesired operation.

NOTE: This equipment has been tested and found to comply with the limits for a Class B digital device, pursuant to part 15 of the FCC Rules.

These limits are designed to provide reasonable protection against harmful interference in a residential installation.

This equipment generates, uses and can radiate radio frequency energy and, if not installed and used in accordance with the instructions, may cause harmful interference to radio communications. However, there is no guarantee that interference will not occur in a particular installation.

If this equipment does cause harmful interference to radio or television reception, which can be determined by turning the equipment off and on, the user is encouraged to try to correct the interference by one or more of the following measures:

- Reorient or relocate the receiving antenna.
- Increase the separation between the equipment and receiver.
- Connect the equipment into an outlet on a circuit different from that to which the receiver is connected.
- Consult the dealer or an experienced radio/TV technician for help.

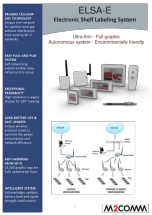
Changes or modifications not expressly approved by the party responsible for compliance could void the user's authority to operate the equipment.

This equipment complies with FCC radiation exposure limits set forth for an uncontrolled environment. This equipment should be installed and operated with a minimum distance of 20 cm between the radiator and a human body.

M2COMMUNICATION Inc. 17 Floor, No. 32 Gaotie 2nd
Road, Zhubei City, Hsinchu County 302, Taiwan (R.O.C.)
Tel: +886 3 657 8939 Fax: +886 3 657 6909 <http://www.m2comm.co>
SALES AND SUPPORT: info@m2comm.co

Copyright © 2017 M2COMMUNICATION Inc. All rights reserved. This document is the property of M2COMMUNICATION Inc. It contains information which is confidential and proprietary to M2COMMUNICATION Inc. No part of this document may be copied, reproduced or disclosed to third parties without the prior written consent of M2COMMUNICATION Inc. (Document number: PB-ELSA-Q001)

Documents / Resources

	<p>M2COMM EF22-S2 Electronic Shelf Labeling System [pdf] Instruction Manual</p> <p>EF22-S2, 2AFXU-EF22-S2, 2AFXUEF22S2, EF22-S2 Electronic Shelf Labeling System, EF22-S2, Electronic Shelf Labeling System, Shelf Labeling System</p>
--	--

References

- [ESL | M2COMM](#)
- [User Manual](#)

■ M2COMM

◆ 2AFXU-EF22-S2, 2AFXUEF22S2, EF22-S2, EF22-S2 Electronic Shelf Labeling System, Electronic Shelf Labeling System, M2COMM, Shelf Labeling System

—Previous Post

[M2COMM ELSA-E Electronic Shelf Labeling System Owner's Manual](#)

Leave a comment

Your email address will not be published. Required fields are marked *

Comment *

Name

Email

Website

☐ Save my name, email, and website in this browser for the next time I comment.

Post Comment

Search:

e.g. whirlpool wrf535swhz

Search

[Manuals+](#) | [Upload](#) | [Deep Search](#) | [Privacy Policy](#) | [@manuals.plus](#) | [YouTube](#)

This website is an independent publication and is neither affiliated with nor endorsed by any of the trademark owners. The "Bluetooth®" word mark and logos are registered trademarks owned by Bluetooth SIG, Inc. The "Wi-Fi®" word mark and logos are registered trademarks owned by the Wi-Fi Alliance. Any use of these marks on this website does not imply any affiliation with or endorsement.